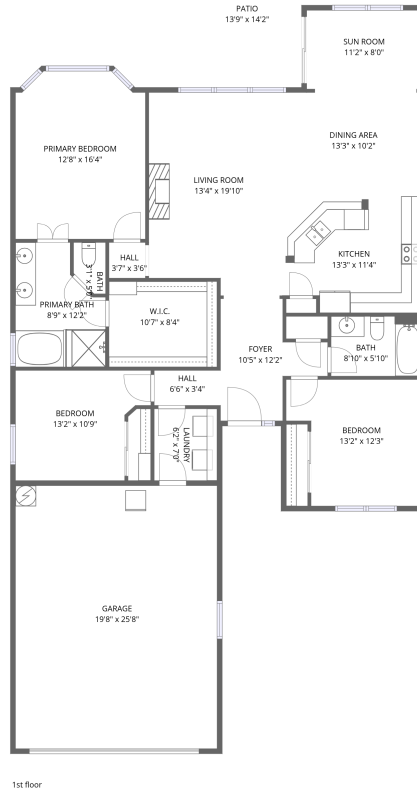


Home data report

# 809 Whispering Wind Dr, Georgetown, TX, US



**Total Area: 1602 sq. ft**

1st Floor: 1602 sq. ft

Excluded: Garage 505 sq. ft, Patio 163 sq. ft, Walls: 131 sq. ft

## Property summary



# 809 Whispering Wind Dr, Georgetown, TX, US



## Room dimensions

Floor 1

Total: 1602 sqft

Excluded: 668 sqft

#		Dimensions	sqft	Counted as living area
1	Kitchen	13'3" x 11'4"	151 sq. ft	Yes
2	Dining Area	13'3" x 10'2"	134 sq. ft	Yes
3	Sun Room	11'2" x 8'0"	89 sq. ft	Yes
4	Patio	13'9" x 14'2"	195 sq. ft	No
5	Primary Bedroom	12'8" x 16'4"	207 sq. ft	Yes
6	Living Room	13'4" x 19'10"	265 sq. ft	Yes
7	Foyer	10'5" x 12'2"	127 sq. ft	Yes
8	Bath	3'1" x 5'0"	16 sq. ft	Yes
9	Garage	19'8" x 25'8"	505 sq. ft	No
10	Primary Bath	8'9" x 12'2"	107 sq. ft	Yes
11	Bedroom	13'2" x 12'3"	162 sq. ft	Yes

Home data report

**809 Whispering Wind Dr,Georgetown,TX,US**

#		Dimensions	sqft	Counted as living area
12	Bath	8'10" x 5'10"	51 sq. ft	Yes
13	W.I.C.	10'7" x 8'4"	88 sq. ft	Yes
14	Hall	6'6" x 3'4"	22 sq. ft	Yes
15	Hall	3'7" x 3'6"	12 sq. ft	Yes
16	Laundry	6'2" x 7'0"	43 sq. ft	Yes
17	Bedroom	13'2" x 10'9"	142 sq. ft	Yes

## 1 Floor 1 - Kitchen



Dimensions: 13'3" x 11'4"  
Area: 151 sq. ft  
Counted as living area: Yes

Heated: Yes  
Finished: Yes  
Enclosed: Yes  
Contiguous: Yes  
Permitted: Yes  
Wet space: No  
Addition: No  
Conversion: No

## 2 Floor 1 - Dining Area



Dimensions: 13'3" x 10'2"  
Area: 134 sq. ft  
Counted as living area: Yes

Heated: Yes  
Finished: Yes  
Enclosed: Yes  
Contiguous: Yes  
Permitted: Yes  
Wet space: No  
Addition: No  
Conversion: No

### 3 Floor 1 - Sun Room



Dimensions: 11'2" x 8'0"  
Area: 89 sq. ft  
Counted as living area: Yes

Heated: Yes  
Finished: Yes  
Enclosed: Yes  
Contiguous: Yes  
Permitted: Yes  
Wet space: No  
Addition: No  
Conversion: No

### 4 Floor 1 - Patio



Dimensions: 13'9" x 14'2"  
Area: 195 sq. ft  
Counted as living area: No

Heated: No  
Finished: No  
Enclosed: No  
Contiguous: Yes  
Permitted: Yes  
Wet space: No  
Addition: No  
Conversion: No

### 5 Floor 1 - Primary Bedroom



Dimensions: 12'8" x 16'4"  
Area: 207 sq. ft  
Counted as living area: Yes

Heated: Yes  
Finished: Yes  
Enclosed: Yes  
Contiguous: Yes  
Permitted: Yes  
Wet space: No  
Addition: No  
Conversion: No

## 6 Floor 1 - Living Room



Dimensions: 13'4" x 19'10"  
Area: 265 sq. ft  
Counted as living area: Yes

Heated: Yes  
Finished: Yes  
Enclosed: Yes  
Contiguous: Yes  
Permitted: Yes  
Wet space: No  
Addition: No  
Conversion: No

## 7 Floor 1 - Foyer



Dimensions: 10'5" x 12'2"  
Area: 127 sq. ft  
Counted as living area: Yes

Heated: Yes  
Finished: Yes  
Enclosed: Yes  
Contiguous: Yes  
Permitted: Yes  
Wet space: No  
Addition: No  
Conversion: No

## 8 Floor 1 - Bath



Dimensions: 3'1" x 5'0"  
Area: 16 sq. ft  
Counted as living area: Yes

Heated: Yes  
Finished: Yes  
Enclosed: Yes  
Contiguous: Yes  
Permitted: Yes  
Wet space: Yes  
Addition: No  
Conversion: No

### 9 Floor 1 - Garage



Dimensions: 19'8" x 25'8"  
Area: 505 sq. ft  
Counted as living area: No

Heated: No  
Finished: No  
Enclosed: Yes  
Contiguous: Yes  
Permitted: Yes  
Wet space: No  
Addition: No  
Conversion: No

### 10 Floor 1 - Primary Bath



Dimensions: 8'9" x 12'2"  
Area: 107 sq. ft  
Counted as living area: Yes

Heated: Yes  
Finished: Yes  
Enclosed: Yes  
Contiguous: Yes  
Permitted: Yes  
Wet space: Yes  
Addition: No  
Conversion: No

### 11 Floor 1 - Bedroom



Dimensions: 13'2" x 12'3"  
Area: 162 sq. ft  
Counted as living area: Yes

Heated: Yes  
Finished: Yes  
Enclosed: Yes  
Contiguous: Yes  
Permitted: Yes  
Wet space: No  
Addition: No  
Conversion: No

**12** Floor 1 - Bath

---



Dimensions: 8'10" x 5'10"  
Area: 51 sq. ft  
Counted as living area: Yes

Heated: Yes  
Finished: Yes  
Enclosed: Yes  
Contiguous: Yes  
Permitted: Yes  
Wet space: Yes  
Addition: No  
Conversion: No

**13** Floor 1 - W.I.C.

---



Dimensions: 10'7" x 8'4"  
Area: 88 sq. ft  
Counted as living area: Yes

Heated: Yes  
Finished: Yes  
Enclosed: Yes  
Contiguous: Yes  
Permitted: Yes  
Wet space: No  
Addition: No  
Conversion: No

**14** Floor 1 - Hall

---



Dimensions: 6'6" x 3'4"  
Area: 22 sq. ft  
Counted as living area: Yes

Heated: Yes  
Finished: Yes  
Enclosed: Yes  
Contiguous: Yes  
Permitted: Yes  
Wet space: No  
Addition: No  
Conversion: No

**15** Floor 1 - Hall



Dimensions: 3'7" x 3'6"  
Area: 12 sq. ft  
Counted as living area: Yes

Heated: Yes  
Finished: Yes  
Enclosed: Yes  
Contiguous: Yes  
Permitted: Yes  
Wet space: No  
Addition: No  
Conversion: No

**16** Floor 1 - Laundry



Dimensions: 6'2" x 7'0"  
Area: 43 sq. ft  
Counted as living area: Yes

Heated: Yes  
Finished: Yes  
Enclosed: Yes  
Contiguous: Yes  
Permitted: Yes  
Wet space: No  
Addition: No  
Conversion: No

**17** Floor 1 - Bedroom



Dimensions: 13'2" x 10'9"  
Area: 142 sq. ft  
Counted as living area: Yes

Heated: Yes  
Finished: Yes  
Enclosed: Yes  
Contiguous: Yes  
Permitted: Yes  
Wet space: No  
Addition: No  
Conversion: No