

Home data report

7105 Park Tree Dr, Turtle Creek, Citrus Park, Tampa, Hillsborough County, Florida, United States, 33625



Total Area: 2814 sq. ft

1st Floor: 1524 sq. ft, 2nd Floor: 1290 sq. ft

Excluded: Covered patio 207 sq. ft, Walls: 187 sq. ft

Property summary

 **2** Floors

 **4** Bedrooms

 **2** Bathrooms

Home data report

**7105 Park Tree Dr, Turtle Creek, Citrus Park, Tampa,
Hillsborough County, Florida, United States, 33625**



1
Half baths



1
Garages

Home data report

7105 Park Tree Dr, Turtle Creek, Citrus Park, Tampa, Hillsborough County, Florida, United States, 33625



Room dimensions

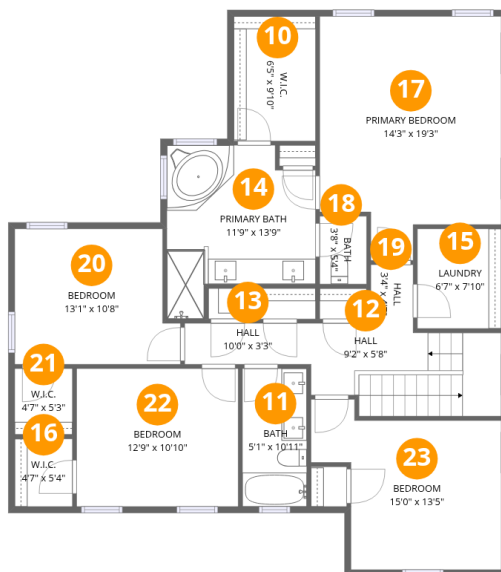
Floor 1

Total:1524sqft Excluded: 207sqft

#		Dimensions	sqft	Counted as living area
1	Dining Area	9'2" x 21'9"	200 sq. ft	Yes
2	Covered Patio	21'7" x 9'6"	207 sq. ft	No
3	Kitchen	9'5" x 24'8"	215 sq. ft	Yes
4	Living Room	19'9" x 16'3"	321 sq. ft	Yes
5	Foyer	4'8" x 16'11"	107 sq. ft	Yes
6	Garage	19'3" x 21'11"	422 sq. ft	Yes
7	Pantry	5'11" x 7'8"	41 sq. ft	Yes
8	Bath	7'5" x 5'10"	33 sq. ft	Yes
9	OFFICE/FLEX Room	11'10" x 13'5"	145 sq. ft	Yes

Home data report

7105 Park Tree Dr, Turtle Creek, Citrus Park, Tampa, Hillsborough County, Florida, United States, 33625



Room dimensions

Floor 2

Total:1290sqft Excluded: 0sqft

#		Dimensions	sqft	Counted as living area
10	W.I.C.	6'5" x 9'10"	63 sq. ft	Yes
11	Bath	5'1" x 10'11"	55 sq. ft	Yes
12	Hall	9'2" x 5'8"	99 sq. ft	Yes
13	Hall	10'0" x 3'3"	32 sq. ft	Yes
14	Primary Bath	11'9" x 13'9"	130 sq. ft	Yes
15	Laundry	6'7" x 7'10"	52 sq. ft	Yes
16	W.I.C.	4'7" x 5'4"	24 sq. ft	Yes
17	Primary Bedroom	14'3" x 19'3"	241 sq. ft	Yes
18	Bath	3'8" x 5'4"	20 sq. ft	Yes
19	Hall	3'4" x 4'7"	15 sq. ft	Yes
20	Bedroom	13'1" x 10'8"	129 sq. ft	Yes

Home data report

**7105 Park Tree Dr, Turtle Creek, Citrus Park, Tampa,
Hillsborough County, Florida, United States, 33625**

#		Dimensions	sqft	Counted as living area
21	W.I.C.	4'7" x 5'3"	24 sq. ft	Yes
22	Bedroom	12'9" x 10'10"	139 sq. ft	Yes
23	Bedroom	15'0" x 13'5"	156 sq. ft	Yes

7105 Park Tree Dr, Turtle Creek, Citrus Park, Tampa,
Hillsborough County, Florida, United States, 33625

1 Floor 1 - Dining Area



Dimensions: 9'2" x 21'9"
Area: 200 sq. ft
Counted as living area: Yes

Heated: Yes
Finished: Yes
Enclosed: Yes
Contiguous: Yes
Permitted: Yes
Wet space: No
Addition: No
Conversion: No

2 Floor 1 - Covered Patio



Dimensions: 21'7" x 9'6"
Area: 207 sq. ft
Counted as living area: No

Heated: No
Finished: No
Enclosed: No
Contiguous: Yes
Permitted: Yes
Wet space: No
Addition: No
Conversion: No

7105 Park Tree Dr, Turtle Creek, Citrus Park, Tampa,
Hillsborough County, Florida, United States, 33625

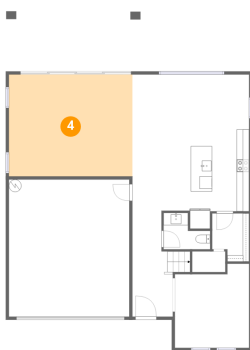
3 Floor 1 - Kitchen



Dimensions: 9'5" x 24'8"
Area: 215 sq. ft
Counted as living area: Yes

Heated: Yes
Finished: Yes
Enclosed: Yes
Contiguous: Yes
Permitted: Yes
Wet space: No
Addition: No
Conversion: No

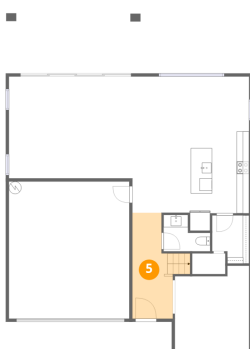
4 Floor 1 - Living Room



Dimensions: 19'9" x 16'3"
Area: 321 sq. ft
Counted as living area: Yes

Heated: Yes
Finished: Yes
Enclosed: Yes
Contiguous: Yes
Permitted: Yes
Wet space: No
Addition: No
Conversion: No

5 Floor 1 - Foyer



Dimensions: 4'8" x 16'11"
Area: 107 sq. ft
Counted as living area: Yes

Heated: Yes
Finished: Yes
Enclosed: Yes
Contiguous: Yes
Permitted: Yes
Wet space: No
Addition: No
Conversion: No

7105 Park Tree Dr, Turtle Creek, Citrus Park, Tampa,
Hillsborough County, Florida, United States, 33625

6 Floor 1 - Garage



Dimensions: 19'3" x 21'11"
Area: 422 sq. ft
Counted as living area: No

Heated: No
Finished: Yes
Enclosed: Yes
Contiguous: Yes
Permitted: Yes
Wet space: No
Addition: No
Conversion: No

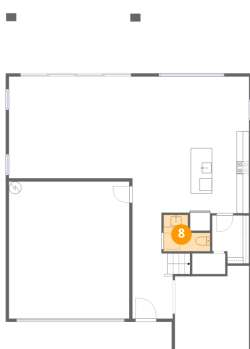
7 Floor 1 - Pantry



Dimensions: 5'11" x 7'8"
Area: 41 sq. ft
Counted as living area: Yes

Heated: Yes
Finished: Yes
Enclosed: Yes
Contiguous: Yes
Permitted: Yes
Wet space: No
Addition: No
Conversion: No

8 Floor 1 - Bath



Dimensions: 7'5" x 5'10"
Area: 33 sq. ft
Counted as living area: Yes

Heated: Yes
Finished: Yes
Enclosed: Yes
Contiguous: Yes
Permitted: Yes
Wet space: Yes
Addition: No
Conversion: No

7105 Park Tree Dr, Turtle Creek, Citrus Park, Tampa, Hillsborough County, Florida, United States, 33625

9 Floor 1 - OFFICE/FLEX Room



Dimensions: 11'10" x 13'5"
Area: 145 sq. ft
Counted as living area: Yes

Heated: Yes
Finished: Yes
Enclosed: Yes
Contiguous: Yes
Permitted: Yes
Wet space: No
Addition: No
Conversion: No

10 Floor 2 - W.I.C.



Dimensions: 6'5" x 9'10"
Area: 63 sq. ft
Counted as living area: Yes

Heated: Yes
Finished: Yes
Enclosed: Yes
Contiguous: Yes
Permitted: Yes
Wet space: No
Addition: No
Conversion: No

11 Floor 2 - Bath

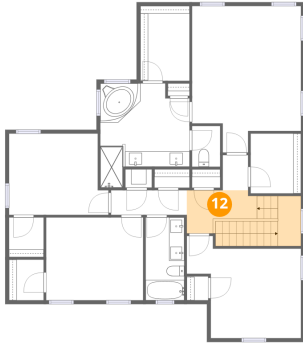


Dimensions: 5'1" x 10'11"
Area: 55 sq. ft
Counted as living area: Yes

Heated: Yes
Finished: Yes
Enclosed: Yes
Contiguous: Yes
Permitted: Yes
Wet space: Yes
Addition: No
Conversion: No

7105 Park Tree Dr, Turtle Creek, Citrus Park, Tampa,
Hillsborough County, Florida, United States, 33625

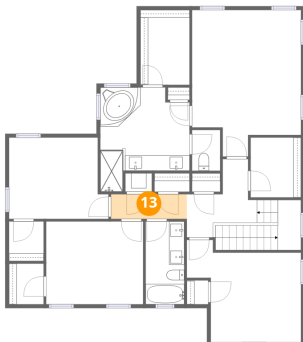
12 Floor 2 - Hall



Dimensions: 9'2" x 5'8"
Area: 99 sq. ft
Counted as living area: Yes

Heated: Yes
Finished: Yes
Enclosed: Yes
Contiguous: Yes
Permitted: Yes
Wet space: No
Addition: No
Conversion: No

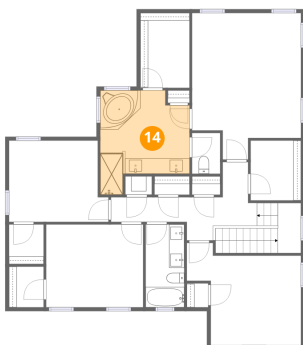
13 Floor 2 - Hall



Dimensions: 10'0" x 3'3"
Area: 32 sq. ft
Counted as living area: Yes

Heated: Yes
Finished: Yes
Enclosed: Yes
Contiguous: Yes
Permitted: Yes
Wet space: No
Addition: No
Conversion: No

14 Floor 2 - Primary Bath

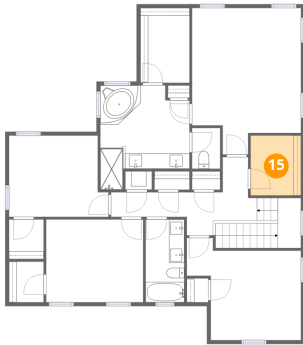


Dimensions: 11'9" x 13'9"
Area: 130 sq. ft
Counted as living area: Yes

Heated: Yes
Finished: Yes
Enclosed: Yes
Contiguous: Yes
Permitted: Yes
Wet space: Yes
Addition: No
Conversion: No

7105 Park Tree Dr, Turtle Creek, Citrus Park, Tampa, Hillsborough County, Florida, United States, 33625

15 Floor 2 - Laundry



Dimensions: 6'7" x 7'10"
Area: 52 sq. ft
Counted as living area: Yes

Heated: Yes
Finished: Yes
Enclosed: Yes
Contiguous: Yes
Permitted: Yes
Wet space: No
Addition: No
Conversion: No

16 Floor 2 - W.I.C.



Dimensions: 4'7" x 5'4"
Area: 24 sq. ft
Counted as living area: Yes

Heated: Yes
Finished: Yes
Enclosed: Yes
Contiguous: Yes
Permitted: Yes
Wet space: No
Addition: No
Conversion: No

17 Floor 2 - Primary Bedroom



Dimensions: 14'3" x 19'3"
Area: 241 sq. ft
Counted as living area: Yes

Heated: Yes
Finished: Yes
Enclosed: Yes
Contiguous: Yes
Permitted: Yes
Wet space: No
Addition: No
Conversion: No

7105 Park Tree Dr, Turtle Creek, Citrus Park, Tampa,
Hillsborough County, Florida, United States, 33625

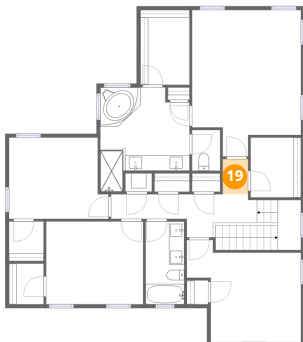
18 Floor 2 - Bath



Dimensions: 3'8" x 5'4"
Area: 20 sq. ft
Counted as living area: Yes

Heated: Yes
Finished: Yes
Enclosed: Yes
Contiguous: Yes
Permitted: Yes
Wet space: Yes
Addition: No
Conversion: No

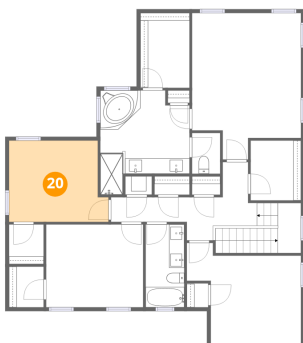
19 Floor 2 - Hall



Dimensions: 3'4" x 4'7"
Area: 15 sq. ft
Counted as living area: Yes

Heated: Yes
Finished: Yes
Enclosed: Yes
Contiguous: Yes
Permitted: Yes
Wet space: No
Addition: No
Conversion: No

20 Floor 2 - Bedroom



Dimensions: 13'1" x 10'8"
Area: 129 sq. ft
Counted as living area: Yes

Heated: Yes
Finished: Yes
Enclosed: Yes
Contiguous: Yes
Permitted: Yes
Wet space: No
Addition: No
Conversion: No

7105 Park Tree Dr, Turtle Creek, Citrus Park, Tampa, Hillsborough County, Florida, United States, 33625

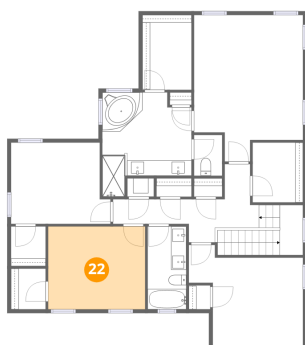
21 Floor 2 - W.I.C.



Dimensions: 4'7" x 5'3"
Area: 24 sq. ft
Counted as living area: Yes

Heated: Yes
Finished: Yes
Enclosed: Yes
Contiguous: Yes
Permitted: Yes
Wet space: No
Addition: No
Conversion: No

22 Floor 2 - Bedroom



Dimensions: 12'9" x 10'10"
Area: 139 sq. ft
Counted as living area: Yes

Heated: Yes
Finished: Yes
Enclosed: Yes
Contiguous: Yes
Permitted: Yes
Wet space: No
Addition: No
Conversion: No

23 Floor 2 - Bedroom



Dimensions: 15'0" x 13'5"
Area: 156 sq. ft
Counted as living area: Yes

Heated: Yes
Finished: Yes
Enclosed: Yes
Contiguous: Yes
Permitted: Yes
Wet space: No
Addition: No
Conversion: No