

10250 Airpark Loop Rd, Melba, ID, US

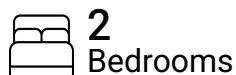


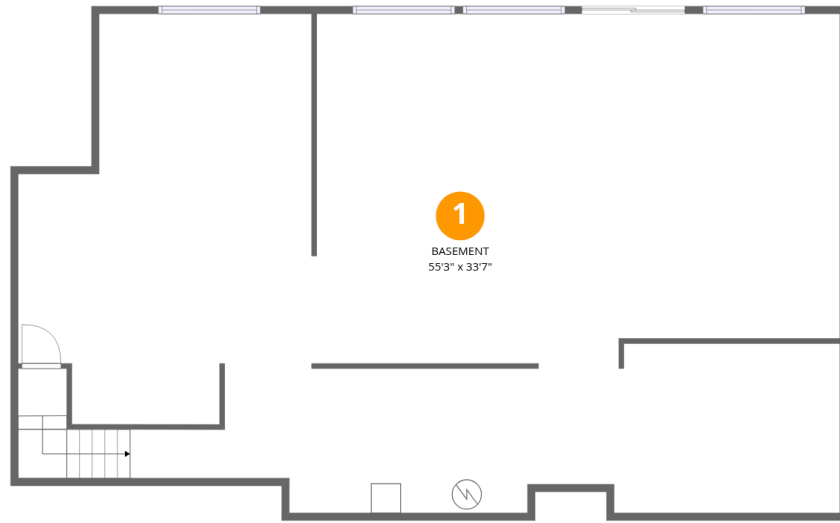
Total Area: 2098 sq. ft

Basement: 0 sq. ft, 1st Floor: 1761 sq. ft, 2nd Floor: 337 sq. ft, 3rd Floor: 0 sq. ft

Excluded: Basement 1742 sq. ft, Garage 2289 sq. ft, Porch 200 sq. ft, Deck 484 sq. ft, Open to below 1326 sq. ft, Storage 634 sq. ft, Walls: 422 sq. ft

Property summary





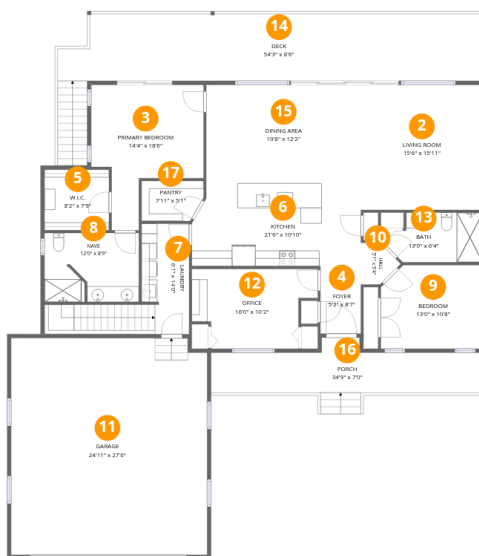
Room dimensions

Floor 1 Below grade

Total: 0sqft

Excluded: 1742sqft

#		Dimensions	sqft	Counted as living area
1	Basement	55'3" x 33'7"	1723 sq. ft	No



Room dimensions

Floor 2

Total: 1761 sqft

Excluded: 1367 sqft

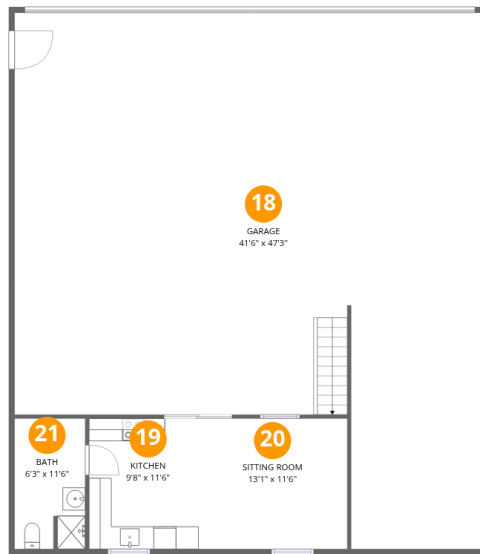
#		Dimensions	sqft	Counted as living area
2	Living Room	15'6" x 15'11"	247 sq. ft	Yes
3	Primary Bedroom	14'4" x 18'6"	189 sq. ft	Yes
4	Foyer	5'2" x 8'7"	44 sq. ft	Yes
5	W.I.C.	8'2" x 7'9"	63 sq. ft	Yes
6	Kitchen	21'6" x 10'10"	227 sq. ft	Yes
7	Laundry	6'1" x 14'0"	131 sq. ft	Yes
8	Nave	12'0" x 8'9"	103 sq. ft	Yes
9	Bedroom	13'0" x 10'8"	134 sq. ft	Yes
10	Hall	5'1" x 5'4"	20 sq. ft	Yes
11	Garage	24'11" x 27'6"	683 sq. ft	No
12	Office	16'0" x 10'2"	138 sq. ft	Yes

Home data report

10250 Airpark Loop Rd,Melba,ID,US

#		Dimensions	sqft	Counted as living area
13	Bath	13'0" x 6'4"	71 sq. ft	Yes
14	Deck	54'3" x 8'6"	484 sq. ft	No
15	Dining Area	19'8" x 12'2"	240 sq. ft	Yes
16	Porch	34'9" x 7'0"	200 sq. ft	No
17	Pantry	7'11" x 5'1"	38 sq. ft	Yes

10250 Airpark Loop Rd, Melba, ID, US



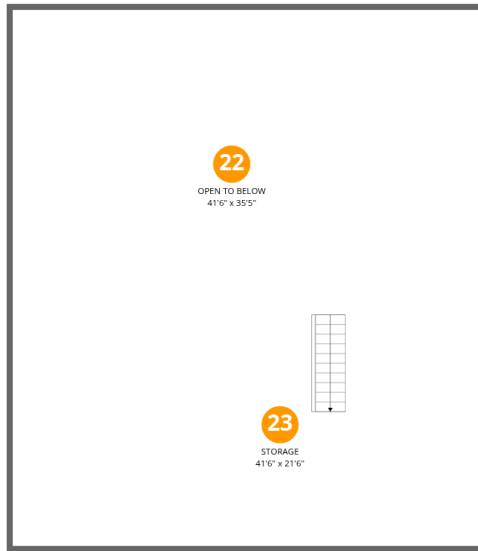
Room dimensions

Floor 3

Total:337sqft

Excluded: 1606sqft

#		Dimensions	sqft	Counted as living area
18	Garage	41'6" x 47'3"	1606 sq. ft	No
19	Kitchen	9'8" x 11'6"	111 sq. ft	Yes
20	Sitting Room	13'1" x 11'6"	151 sq. ft	Yes
21	Bath	6'3" x 11'6"	71 sq. ft	Yes



Room dimensions

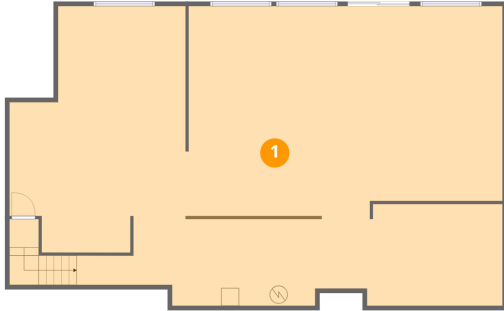
Floor 4

Total:0sqft

Excluded: 1960sqft

#		Dimensions	sqft	Counted as living area
22	Open To Below	41'6" x 35'5"	1326 sq. ft	No
23	Storage	41'6" x 21'6"	634 sq. ft	No

1 Floor 1 - Basement



Dimensions: 55'3" x 33'7"
Area: 1723 sq. ft
Counted as living area: No

Heated: Yes
Finished: No
Enclosed: Yes
Contiguous: Yes
Permitted: Yes
Wet space: No
Addition: No
Conversion: No

2 Floor 2 - Living Room



Dimensions: 15'6" x 15'11"
Area: 247 sq. ft
Counted as living area: Yes

Heated: Yes
Finished: Yes
Enclosed: Yes
Contiguous: Yes
Permitted: Yes
Wet space: No
Addition: No
Conversion: No

3 Floor 2 - Primary Bedroom



Dimensions: 14'4" x 18'6"
Area: 189 sq. ft
Counted as living area: Yes

Heated: Yes
Finished: Yes
Enclosed: Yes
Contiguous: Yes
Permitted: Yes
Wet space: No
Addition: No
Conversion: No

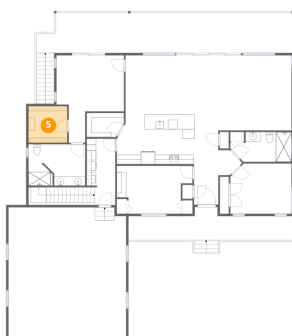
4 Floor 2 - Foyer



Dimensions: 5'2" x 8'7"
Area: 44 sq. ft
Counted as living area: Yes

Heated: Yes
Finished: Yes
Enclosed: Yes
Contiguous: Yes
Permitted: Yes
Wet space: No
Addition: No
Conversion: No

5 Floor 2 - W.I.C.



Dimensions: 8'2" x 7'9"
Area: 63 sq. ft
Counted as living area: Yes

Heated: Yes
Finished: Yes
Enclosed: Yes
Contiguous: Yes
Permitted: Yes
Wet space: No
Addition: No
Conversion: No

6 Floor 2 - Kitchen



Dimensions: 21'6" x 10'10"
Area: 227 sq. ft
Counted as living area: Yes

Heated: Yes
Finished: Yes
Enclosed: Yes
Contiguous: Yes
Permitted: Yes
Wet space: No
Addition: No
Conversion: No

7 Floor 2 - Laundry



Dimensions: 6'1" x 14'0"
Area: 131 sq. ft
Counted as living area: Yes

Heated: Yes
Finished: Yes
Enclosed: Yes
Contiguous: Yes
Permitted: Yes
Wet space: No
Addition: No
Conversion: No

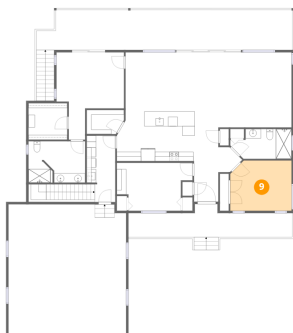
8 Floor 2 - Nave



Dimensions: 12'0" x 8'9"
Area: 103 sq. ft
Counted as living area: Yes

Heated: Yes
Finished: Yes
Enclosed: Yes
Contiguous: Yes
Permitted: Yes
Wet space: No
Addition: No
Conversion: No

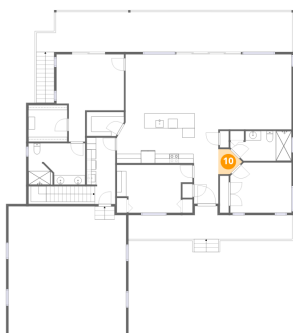
9 Floor 2 - Bedroom



Dimensions: 13'0" x 10'8"
Area: 134 sq. ft
Counted as living area: Yes

Heated: Yes
Finished: Yes
Enclosed: Yes
Contiguous: Yes
Permitted: Yes
Wet space: No
Addition: No
Conversion: No

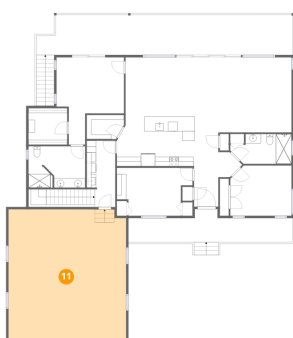
10 Floor 2 - Hall



Dimensions: 5'1" x 5'4"
Area: 20 sq. ft
Counted as living area: Yes

Heated: Yes
Finished: Yes
Enclosed: Yes
Contiguous: Yes
Permitted: Yes
Wet space: No
Addition: No
Conversion: No

11 Floor 2 - Garage



Dimensions: 24'11" x 27'6"
Area: 683 sq. ft
Counted as living area: No

Heated: No
Finished: No
Enclosed: Yes
Contiguous: Yes
Permitted: Yes
Wet space: No
Addition: No
Conversion: No

12 Floor 2 - Office



Dimensions: 16'0" x 10'2"
Area: 138 sq. ft
Counted as living area: Yes

Heated: Yes
Finished: Yes
Enclosed: Yes
Contiguous: Yes
Permitted: Yes
Wet space: No
Addition: No
Conversion: No

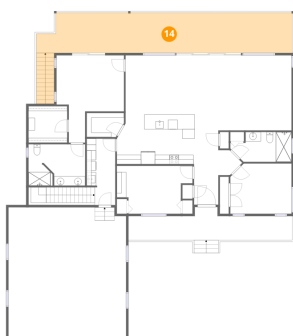
13 Floor 2 - Bath



Dimensions: 13'0" x 6'4"
Area: 71 sq. ft
Counted as living area: Yes

Heated: Yes
Finished: Yes
Enclosed: Yes
Contiguous: Yes
Permitted: Yes
Wet space: Yes
Addition: No
Conversion: No

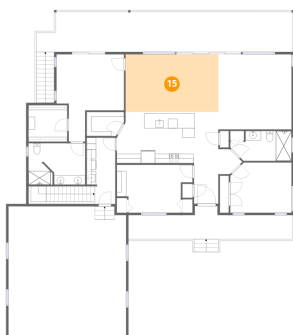
14 Floor 2 - Deck



Dimensions: 54'3" x 8'6"
Area: 484 sq. ft
Counted as living area: No

Heated: No
Finished: No
Enclosed: No
Contiguous: Yes
Permitted: Yes
Wet space: No
Addition: No
Conversion: No

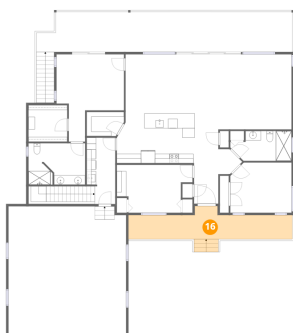
15 Floor 2 - Dining Area



Dimensions: 19'8" x 12'2"
Area: 240 sq. ft
Counted as living area: Yes

Heated: Yes
Finished: Yes
Enclosed: Yes
Contiguous: Yes
Permitted: Yes
Wet space: No
Addition: No
Conversion: No

16 Floor 2 - Porch



Dimensions: 34'9" x 7'0"
Area: 200 sq. ft
Counted as living area: No

Heated: No
Finished: No
Enclosed: No
Contiguous: Yes
Permitted: Yes
Wet space: No
Addition: No
Conversion: No

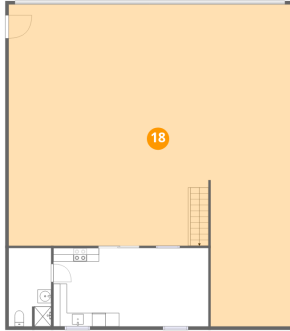
17 Floor 2 - Pantry



Dimensions: 7'11" x 5'1"
Area: 38 sq. ft
Counted as living area: Yes

Heated: Yes
Finished: Yes
Enclosed: Yes
Contiguous: Yes
Permitted: Yes
Wet space: No
Addition: No
Conversion: No

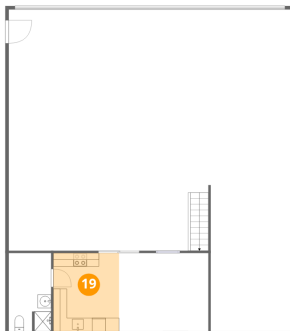
18 Floor 3 - Garage



Dimensions: 41'6" x 47'3"
Area: 1606 sq. ft
Counted as living area: No

Heated: No
Finished: No
Enclosed: Yes
Contiguous: Yes
Permitted: Yes
Wet space: No
Addition: No
Conversion: No

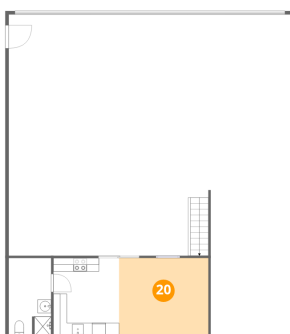
19 Floor 3 - Kitchen



Dimensions: 9'8" x 11'6"
Area: 111 sq. ft
Counted as living area: Yes

Heated: Yes
Finished: Yes
Enclosed: Yes
Contiguous: Yes
Permitted: Yes
Wet space: No
Addition: No
Conversion: No

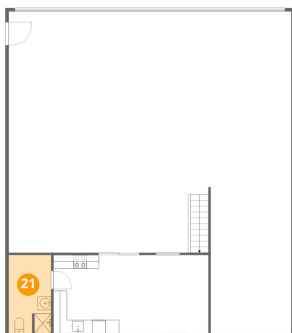
20 Floor 3 - Sitting Room



Dimensions: 13'1" x 11'6"
Area: 151 sq. ft
Counted as living area: Yes

Heated: Yes
Finished: Yes
Enclosed: Yes
Contiguous: Yes
Permitted: Yes
Wet space: No
Addition: No
Conversion: No

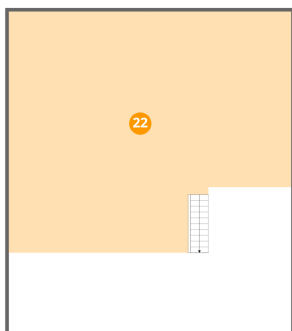
21 Floor 3 - Bath



Dimensions: 6'3" x 11'6"
Area: 71 sq. ft
Counted as living area: Yes

Heated: Yes
Finished: Yes
Enclosed: Yes
Contiguous: Yes
Permitted: Yes
Wet space: Yes
Addition: No
Conversion: No

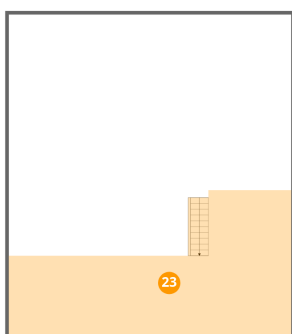
22 Floor 4 - Open To Below



Dimensions: 41'6" x 35'5"
Area: 1326 sq. ft
Counted as living area: No

Heated: No
Finished: No
Enclosed: No
Contiguous: Yes
Permitted: No
Wet space: No
Addition: No
Conversion: No

23 Floor 4 - Storage



Dimensions: 41'6" x 21'6"
Area: 634 sq. ft
Counted as living area: No

Heated: No
Finished: No
Enclosed: No
Contiguous: Yes
Permitted: Yes
Wet space: No
Addition: No
Conversion: No