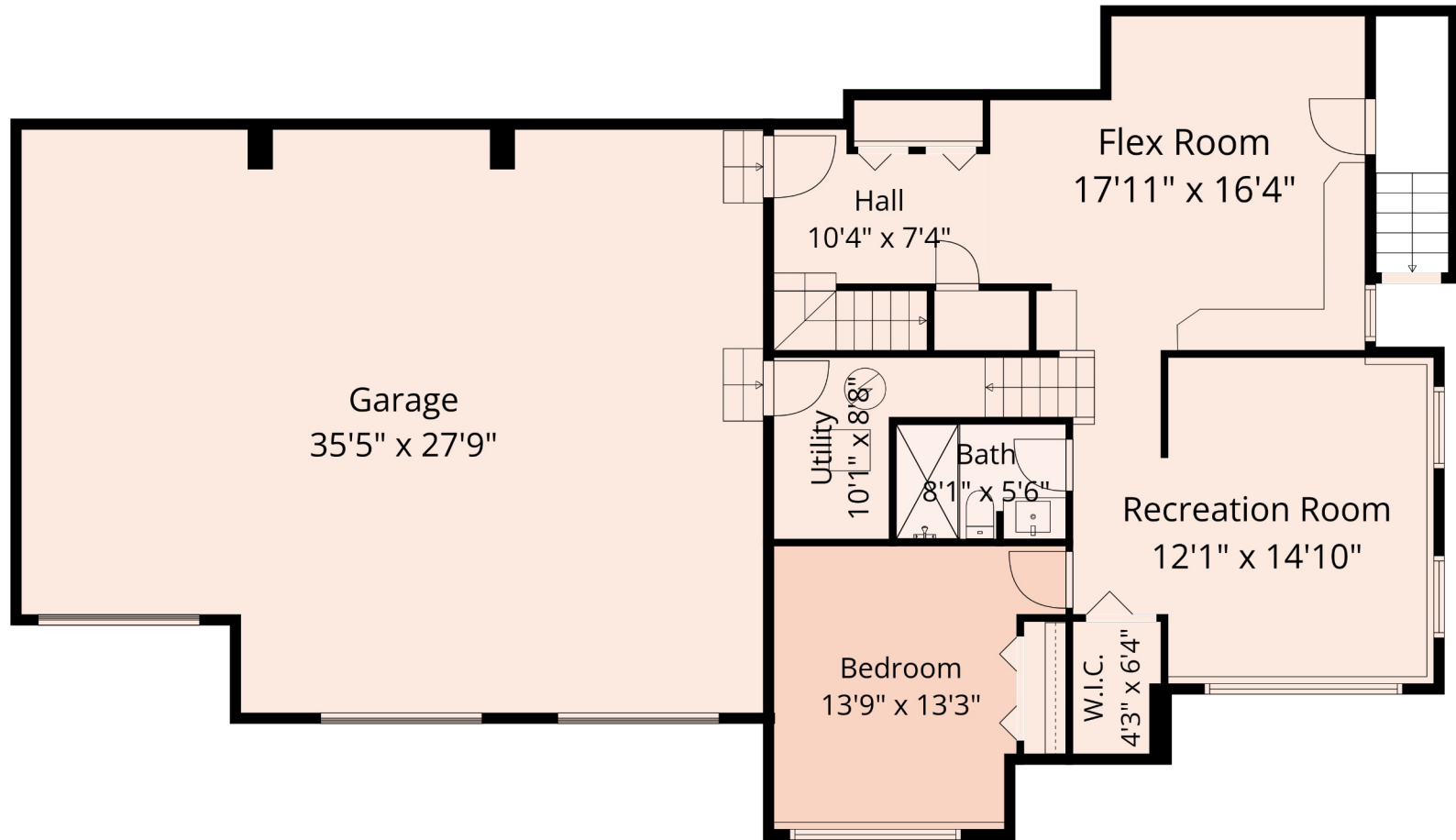


2655 STONECROFT DR



Estimated Areas:

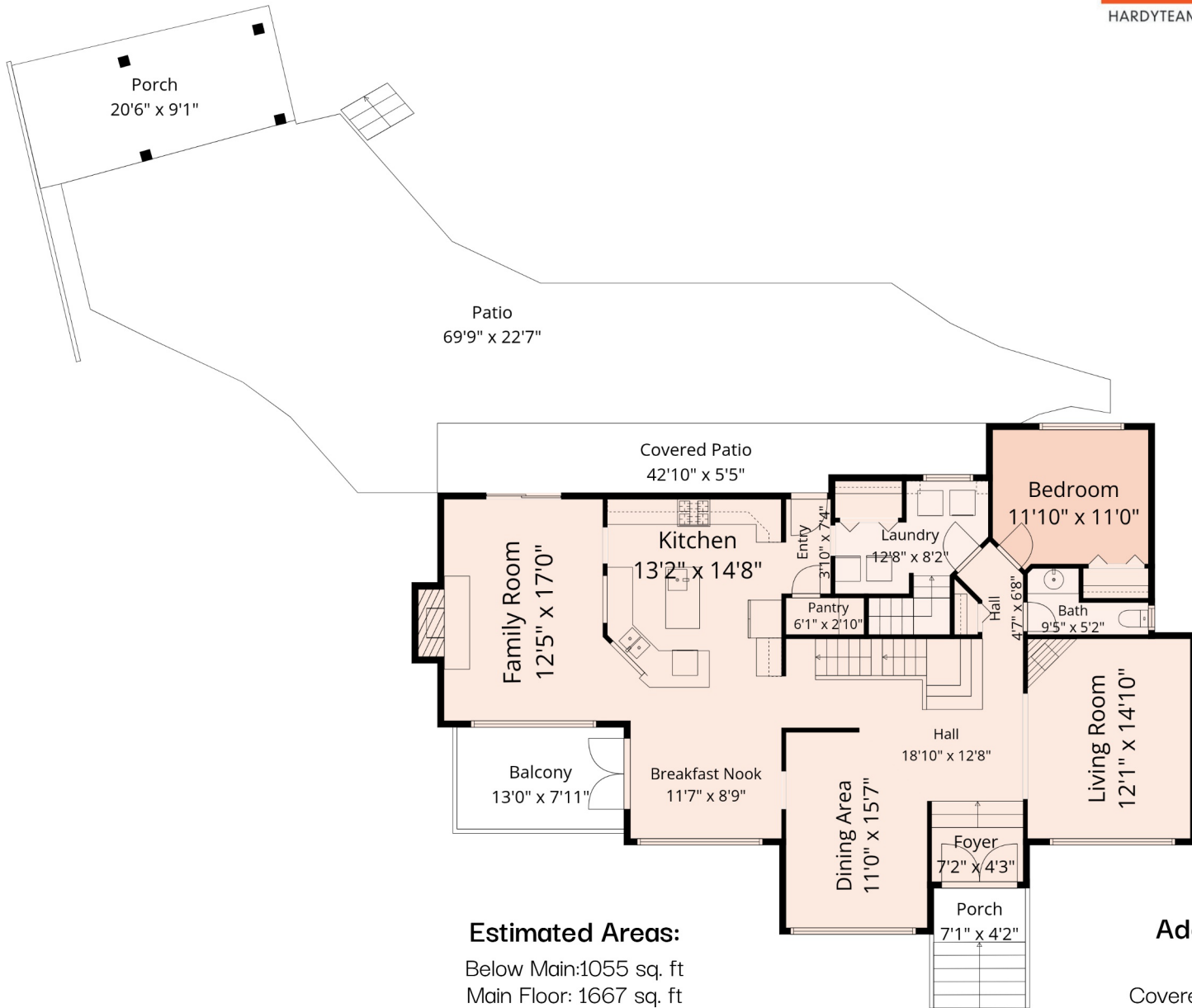
Below Main: 1055 sq. ft
Main Floor: 1667 sq. ft
Above Main: 1368 sq. ft
Total Sq. Ft: 4090

Additional Areas:

Porch: 263 sq. ft
Covered Patio: 214 sq. ft
Garage: 989 sq. ft
Balcony: 103 sq. ft

*** E&O Insured. For advertising purposes only. Not intended for architectural or construction use. Floorplan and measurements are approximate within +/- 2% tolerance

2655 STONECROFT DR



Estimated Areas:

Below Main: 1055 sq. ft

Main Floor: 1667 sq. ft

Above Main: 1368 sq. ft

Total Sq. Ft: 4090

Additional Areas:

Porch: 263 sq. ft

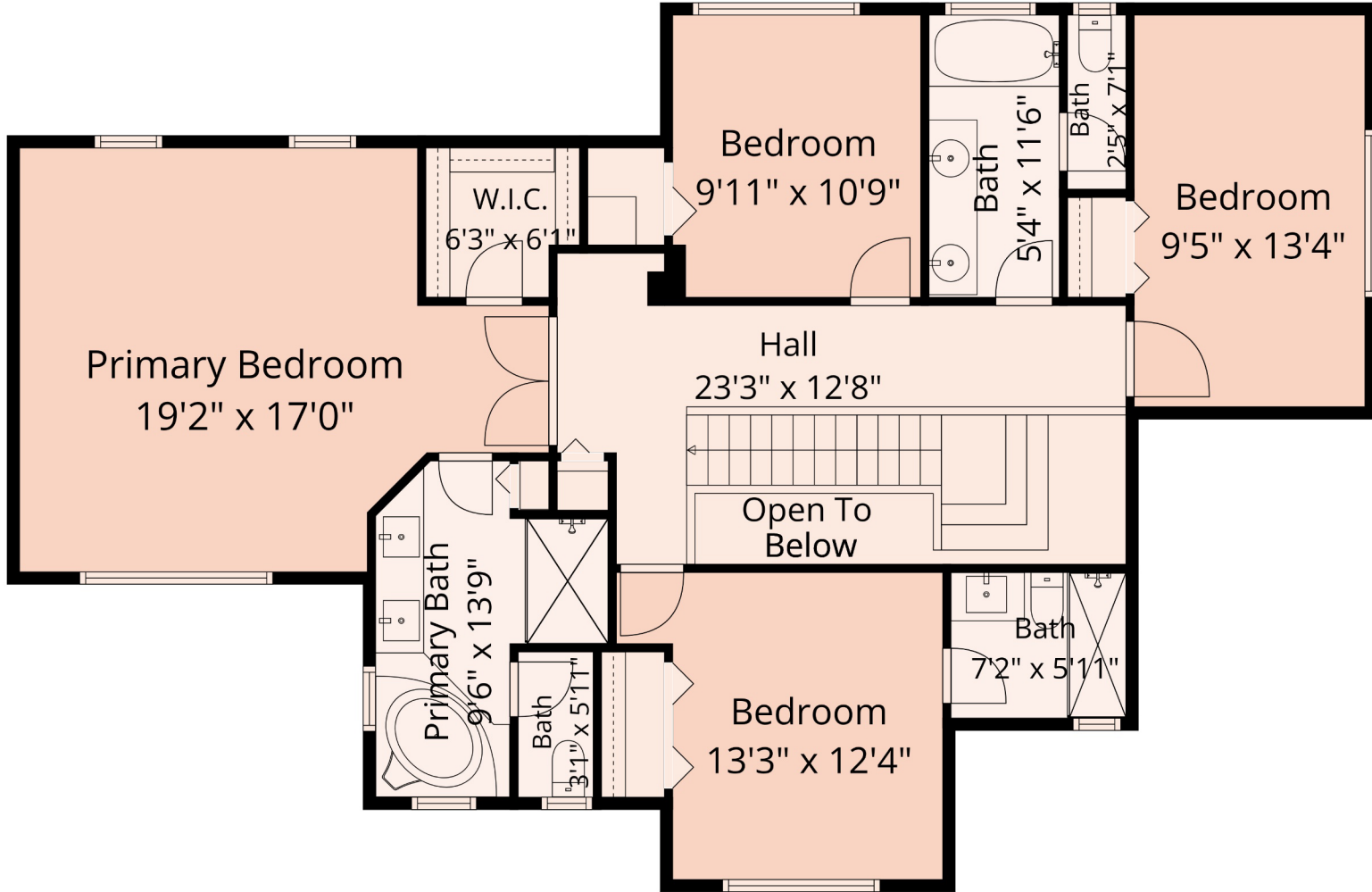
Covered Patio: 214 sq. ft

Garage: 989 sq. ft

Balcony: 103 sq. ft

*** E&O Insured. For advertising purposes only. Not intended for architectural or construction use. Floorplan and measurements are approximate within +/- 2% tolerance

2655 STONECROFT DR



Estimated Areas:

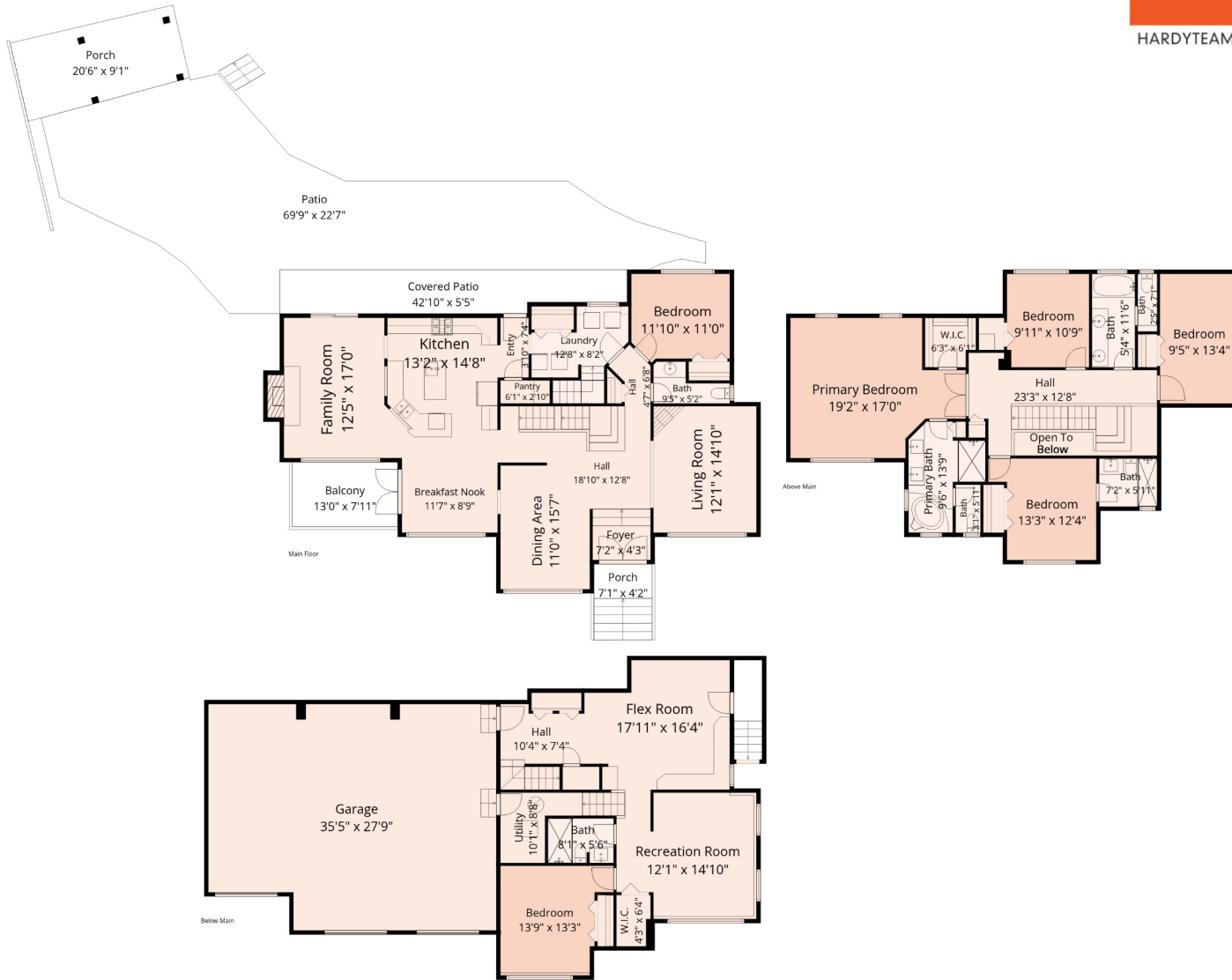
Below Main: 1055 sq. ft
Main Floor: 1667 sq. ft
Above Main: 1368 sq. ft
Total Sq. Ft: 4090

Additional Areas:

Porch: 263 sq. ft
Covered Patio: 214 sq. ft
Garage: 989 sq. ft
Balcony: 103 sq. ft

*** E&O Insured. For advertising purposes only. Not intended for architectural or construction use. Floorplan and measurements are approximate within +/- 2% tolerance

2655 STONECROFT DR



Estimated Areas:
 Below Main: 1055 sq. ft
 Main Floor: 1667 sq. ft
 Above Main: 1368 sq. ft
Total Sq. Ft: 4090

Additional Areas:
 Porch: 263 sq. ft
 Covered Patio: 214 sq. ft
 Garage: 989 sq. ft
 Balcony: 103 sq. ft

*** E&O Insured. For advertising purposes only. Not intended for architectural or construction use. Floorplan and measurements are approximate within +/- 2% tolerance