

714 Ridge Creek Ct, Longmont, CO, US



Total Area: 3660 sq. ft

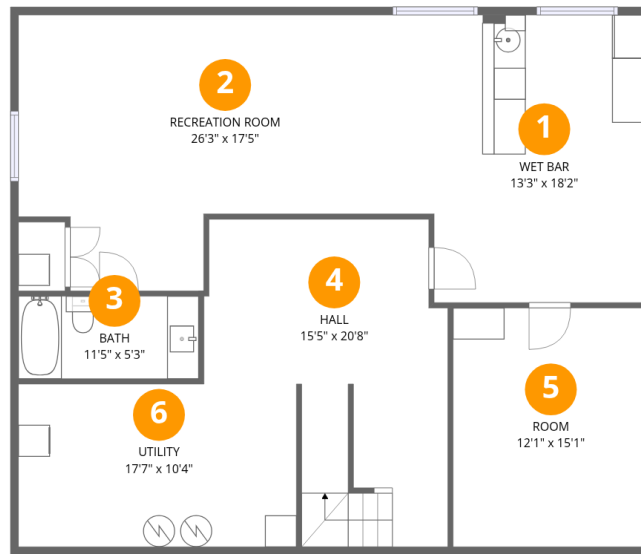
Basement: 897 sq. ft, 1st Floor: 1421 sq. ft, 2nd Floor: 1342 sq. ft

Excluded: Hall 251 sq. ft, Utility 181 sq. ft, Porch 187 sq. ft, Deck 382 sq. ft, Garage 602 sq. ft, Fireplace 11 sq. ft, Open to below 280 sq. ft, Walls: 281 sq. ft

Property summary



714 Ridge Creek Ct, Longmont, CO, US



Room dimensions

Floor 1 Below grade

Total: 897 sqft

Excluded: 432 sqft

#		Dimensions	sqft	Counted as living area
1	Wet Bar	13'3" x 18'2"	241 sq. ft	Yes
2	Recreation Room	26'3" x 17'5"	372 sq. ft	Yes
3	Bath	11'5" x 5'3"	59 sq. ft	Yes
4	Hall	15'5" x 20'8"	247 sq. ft	No
5	Room	12'1" x 15'1"	182 sq. ft	Yes
6	Utility	17'7" x 10'4"	181 sq. ft	No



Room dimensions

Floor 2

Total: 1421 sqft

Excluded: 1182 sqft

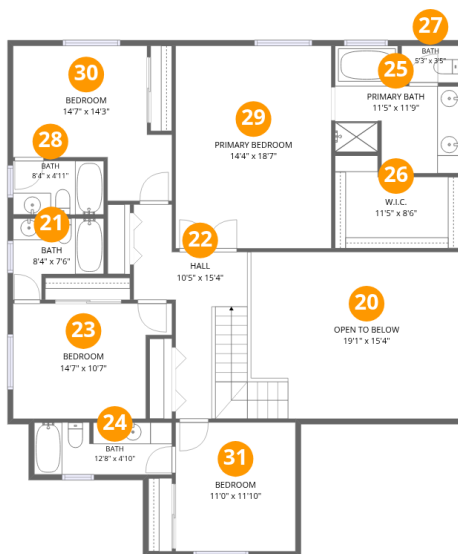
#		Dimensions	sqft	Counted as living area
7	Bath	8'4" x 4'11"	41 sq. ft	Yes
8	Kitchen	14'5" x 11'3"	157 sq. ft	Yes
9	Deck	25'5" x 15'0"	382 sq. ft	No
10	Breakfast Nook	14'5" x 7'1"	102 sq. ft	Yes
11	Family Room	18'2" x 18'4"	298 sq. ft	Yes
12	Garage	10'4" x 20'3"	202 sq. ft	No
13	Laundry	8'2" x 7'0"	57 sq. ft	Yes
14	Office	9'9" x 10'3"	100 sq. ft	Yes
15	Dining Area	10'2" x 13'9"	140 sq. ft	Yes
16	Porch	15'11" x 12'6"	187 sq. ft	No
17	Living Room	19'1" x 23'8"	399 sq. ft	Yes

Home data report

714 Ridge Creek Ct,Longmont,CO,US

#		Dimensions	sqft	Counted as living area
18	Garage	18'0" x 22'3"	400 sq. ft	No
19	Hall	9'0" x 8'7"	65 sq. ft	Yes

714 Ridge Creek Ct, Longmont, CO, US



Room dimensions

Floor 3

Total: 1342sqft Excluded: 280sqft

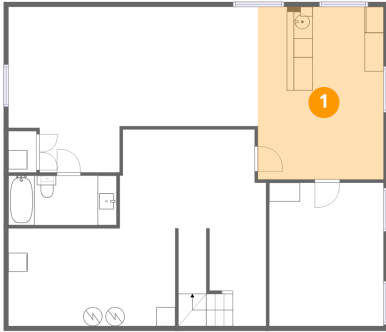
#		Dimensions	sqft	Counted as living area
20	Open To Below	19'1" x 15'4"	280 sq. ft	No
21	Bath	8'4" x 7'6"	49 sq. ft	Yes
22	Hall	10'5" x 15'4"	151 sq. ft	Yes
23	Bedroom	14'7" x 10'7"	136 sq. ft	Yes
24	Bath	12'8" x 4'10"	60 sq. ft	Yes
25	Primary Bath	11'5" x 11'9"	103 sq. ft	Yes
26	W.I.C.	11'5" x 8'6"	82 sq. ft	Yes
27	Bath	5'3" x 3'5"	18 sq. ft	Yes
28	Bath	8'4" x 4'11"	41 sq. ft	Yes
29	Primary Bedroom	14'4" x 18'7"	266 sq. ft	Yes
30	Bedroom	14'7" x 14'3"	155 sq. ft	Yes

Home data report

714 Ridge Creek Ct,Longmont,CO,US

#		Dimensions	sqft	Counted as living area
31	Bedroom	11'0" x 11'10"	130 sq. ft	Yes

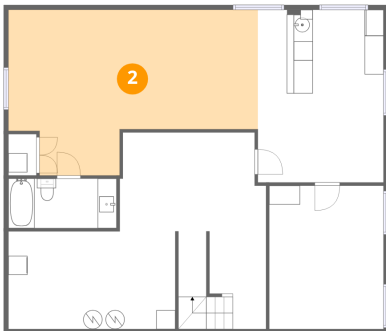
1 Floor 1 - Wet Bar



Dimensions: 13'3" x 18'2"
Area: 241 sq. ft
Counted as living area: Yes

Heated: Yes
Finished: Yes
Enclosed: Yes
Contiguous: Yes
Permitted: Yes
Wet space: No
Addition: No
Conversion: No

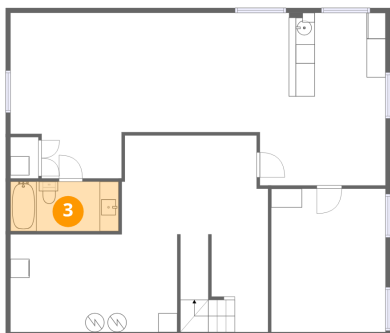
2 Floor 1 - Recreation Room



Dimensions: 26'3" x 17'5"
Area: 372 sq. ft
Counted as living area: Yes

Heated: Yes
Finished: Yes
Enclosed: Yes
Contiguous: Yes
Permitted: Yes
Wet space: No
Addition: No
Conversion: No

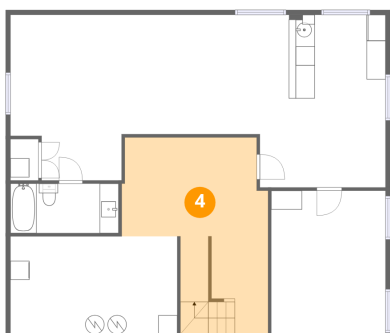
3 Floor 1 - Bath



Dimensions: 11'5" x 5'3"
Area: 59 sq. ft
Counted as living area: Yes

Heated: Yes
Finished: Yes
Enclosed: Yes
Contiguous: Yes
Permitted: Yes
Wet space: Yes
Addition: No
Conversion: No

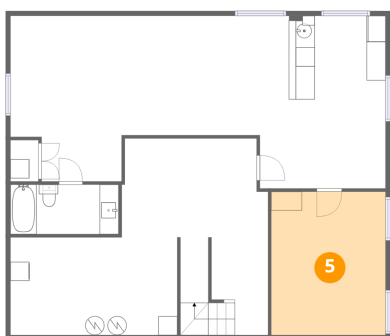
4 Floor 1 - Hall



Dimensions: 15'5" x 20'8"
Area: 247 sq. ft
Counted as living area: No

Heated: Yes
Finished: No
Enclosed: Yes
Contiguous: Yes
Permitted: Yes
Wet space: No
Addition: No
Conversion: No

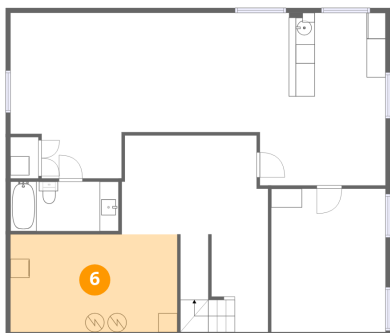
5 Floor 1 - Room



Dimensions: 12'1" x 15'1"
Area: 182 sq. ft
Counted as living area: Yes

Heated: Yes
Finished: Yes
Enclosed: Yes
Contiguous: Yes
Permitted: Yes
Wet space: No
Addition: No
Conversion: No

6 Floor 1 - Utility



Dimensions: 17'7" x 10'4"
Area: 181 sq. ft
Counted as living area: No

Heated: Yes
Finished: No
Enclosed: Yes
Contiguous: Yes
Permitted: Yes
Wet space: No
Addition: No
Conversion: No

7 Floor 2 - Bath



Dimensions: 8'4" x 4'11"
Area: 41 sq. ft
Counted as living area: Yes

Heated: Yes
Finished: Yes
Enclosed: Yes
Contiguous: Yes
Permitted: Yes
Wet space: Yes
Addition: No
Conversion: No

8 Floor 2 - Kitchen



Dimensions: 14'5" x 11'3"
Area: 157 sq. ft
Counted as living area: Yes

Heated: Yes
Finished: Yes
Enclosed: Yes
Contiguous: Yes
Permitted: Yes
Wet space: No
Addition: No
Conversion: No

9 Floor 2 - Deck



Dimensions: 25'5" x 15'0"
Area: 382 sq. ft
Counted as living area: No

Heated: No
Finished: No
Enclosed: No
Contiguous: Yes
Permitted: Yes
Wet space: No
Addition: No
Conversion: No

10 Floor 2 - Breakfast Nook



Dimensions: 14'5" x 7'1"
Area: 102 sq. ft
Counted as living area: Yes

Heated: Yes
Finished: Yes
Enclosed: Yes
Contiguous: Yes
Permitted: Yes
Wet space: No
Addition: No
Conversion: No

11 Floor 2 - Family Room



Dimensions: 18'2" x 18'4"
Area: 298 sq. ft
Counted as living area: Yes

Heated: Yes
Finished: Yes
Enclosed: Yes
Contiguous: Yes
Permitted: Yes
Wet space: No
Addition: No
Conversion: No

12 Floor 2 - Garage



Dimensions: 10'4" x 20'3"
Area: 202 sq. ft
Counted as living area: No

Heated: No
Finished: No
Enclosed: Yes
Contiguous: Yes
Permitted: Yes
Wet space: No
Addition: No
Conversion: No

13 Floor 2 - Laundry



Dimensions: 8'2" x 7'0"
Area: 57 sq. ft
Counted as living area: Yes

Heated: Yes
Finished: Yes
Enclosed: Yes
Contiguous: Yes
Permitted: Yes
Wet space: No
Addition: No
Conversion: No

14 Floor 2 - Office



Dimensions: 9'9" x 10'3"
Area: 100 sq. ft
Counted as living area: Yes

Heated: Yes
Finished: Yes
Enclosed: Yes
Contiguous: Yes
Permitted: Yes
Wet space: No
Addition: No
Conversion: No

15 Floor 2 - Dining Area



Dimensions: 10'2" x 13'9"
Area: 140 sq. ft
Counted as living area: Yes

Heated: Yes
Finished: Yes
Enclosed: Yes
Contiguous: Yes
Permitted: Yes
Wet space: No
Addition: No
Conversion: No

16 Floor 2 - Porch



Dimensions: 15'11" x 12'6"
Area: 187 sq. ft
Counted as living area: No

Heated: No
Finished: No
Enclosed: No
Contiguous: Yes
Permitted: Yes
Wet space: No
Addition: No
Conversion: No

17 Floor 2 - Living Room



Dimensions: 19'1" x 23'8"
Area: 399 sq. ft
Counted as living area: Yes

Heated: Yes
Finished: Yes
Enclosed: Yes
Contiguous: Yes
Permitted: Yes
Wet space: No
Addition: No
Conversion: No

18 Floor 2 - Garage



Dimensions: 18'0" x 22'3"
Area: 400 sq. ft
Counted as living area: No

Heated: No
Finished: No
Enclosed: Yes
Contiguous: Yes
Permitted: Yes
Wet space: No
Addition: No
Conversion: No

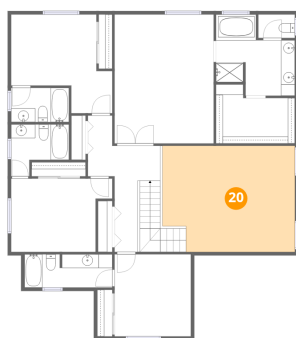
19 Floor 2 - Hall



Dimensions: 9'0" x 8'7"
Area: 65 sq. ft
Counted as living area: Yes

Heated: Yes
Finished: Yes
Enclosed: Yes
Contiguous: Yes
Permitted: Yes
Wet space: No
Addition: No
Conversion: No

20 Floor 3 - Open To Below



Dimensions: 19'1" x 15'4"
Area: 280 sq. ft
Counted as living area: No

Heated: No
Finished: No
Enclosed: No
Contiguous: Yes
Permitted: No
Wet space: No
Addition: No
Conversion: No

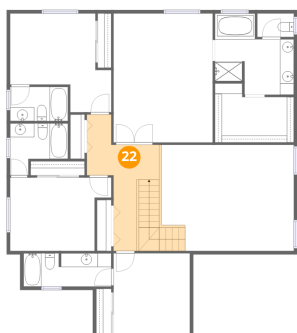
21 Floor 3 - Bath



Dimensions: 8'4" x 7'6"
Area: 49 sq. ft
Counted as living area: Yes

Heated: Yes
Finished: Yes
Enclosed: Yes
Contiguous: Yes
Permitted: Yes
Wet space: Yes
Addition: No
Conversion: No

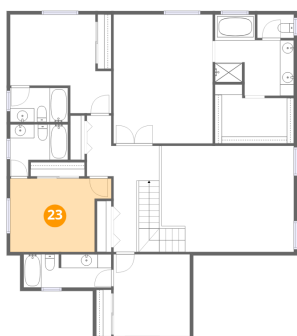
22 Floor 3 - Hall



Dimensions: 10'5" x 15'4"
Area: 151 sq. ft
Counted as living area: Yes

Heated: Yes
Finished: Yes
Enclosed: Yes
Contiguous: Yes
Permitted: Yes
Wet space: No
Addition: No
Conversion: No

23 Floor 3 - Bedroom



Dimensions: 14'7" x 10'7"
Area: 136 sq. ft
Counted as living area: Yes

Heated: Yes
Finished: Yes
Enclosed: Yes
Contiguous: Yes
Permitted: Yes
Wet space: No
Addition: No
Conversion: No

24 Floor 3 - Bath



Dimensions: 12'8" x 4'10"
Area: 60 sq. ft
Counted as living area: Yes

Heated: Yes
Finished: Yes
Enclosed: Yes
Contiguous: Yes
Permitted: Yes
Wet space: Yes
Addition: No
Conversion: No

25 Floor 3 - Primary Bath



Dimensions: 11'5" x 11'9"
Area: 103 sq. ft
Counted as living area: Yes

Heated: Yes
Finished: Yes
Enclosed: Yes
Contiguous: Yes
Permitted: Yes
Wet space: Yes
Addition: No
Conversion: No

26 Floor 3 - W.I.C.



Dimensions: 11'5" x 8'6"
Area: 82 sq. ft
Counted as living area: Yes

Heated: Yes
Finished: Yes
Enclosed: Yes
Contiguous: Yes
Permitted: Yes
Wet space: No
Addition: No
Conversion: No

27 Floor 3 - Bath



Dimensions: 5'3" x 3'5"
Area: 18 sq. ft
Counted as living area: Yes

Heated: Yes
Finished: Yes
Enclosed: Yes
Contiguous: Yes
Permitted: Yes
Wet space: Yes
Addition: No
Conversion: No

28 Floor 3 - Bath



Dimensions: 8'4" x 4'11"
Area: 41 sq. ft
Counted as living area: Yes

Heated: Yes
Finished: Yes
Enclosed: Yes
Contiguous: Yes
Permitted: Yes
Wet space: Yes
Addition: No
Conversion: No

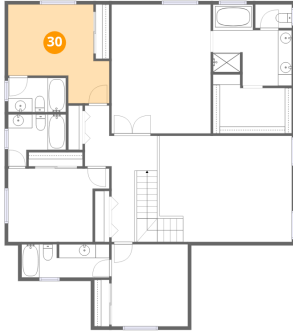
29 Floor 3 - Primary Bedroom



Dimensions: 14'4" x 18'7"
Area: 266 sq. ft
Counted as living area: Yes

Heated: Yes
Finished: Yes
Enclosed: Yes
Contiguous: Yes
Permitted: Yes
Wet space: No
Addition: No
Conversion: No

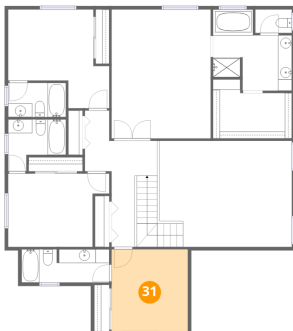
30 Floor 3 - Bedroom



Dimensions: 14'7" x 14'3"
Area: 155 sq. ft
Counted as living area: Yes

Heated: Yes
Finished: Yes
Enclosed: Yes
Contiguous: Yes
Permitted: Yes
Wet space: No
Addition: No
Conversion: No

31 Floor 3 - Bedroom



Dimensions: 11'0" x 11'10"
Area: 130 sq. ft
Counted as living area: Yes

Heated: Yes
Finished: Yes
Enclosed: Yes
Contiguous: Yes
Permitted: Yes
Wet space: No
Addition: No
Conversion: No