

Home data report

1826 Toms Run Road, Holbrook, Pennsylvania 15341, United States



Total Area: 2570 sq. ft

Basement: 75 sq. ft, 1st Floor: 1658 sq. ft, 2nd Floor: 837 sq. ft

Excluded: Basement 485 sq. ft, Garage 1159 sq. ft, Storage 86 sq. ft, Porch 215 sq. ft, Balcony 599 sq. ft, Deck 83 sq. ft, Open to below 109 sq. ft, Walls: 342 sq. ft

Property summary



3 Floors



4 Bedrooms



3 Bathrooms

Home data report

1826 Toms Run Road, Holbrook, Pennsylvania 15341, United States

 **1**
Half baths

 **2**
Garages

Home data report

1826 Toms Run Road, Holbrook, Pennsylvania 15341, United States



Room dimensions

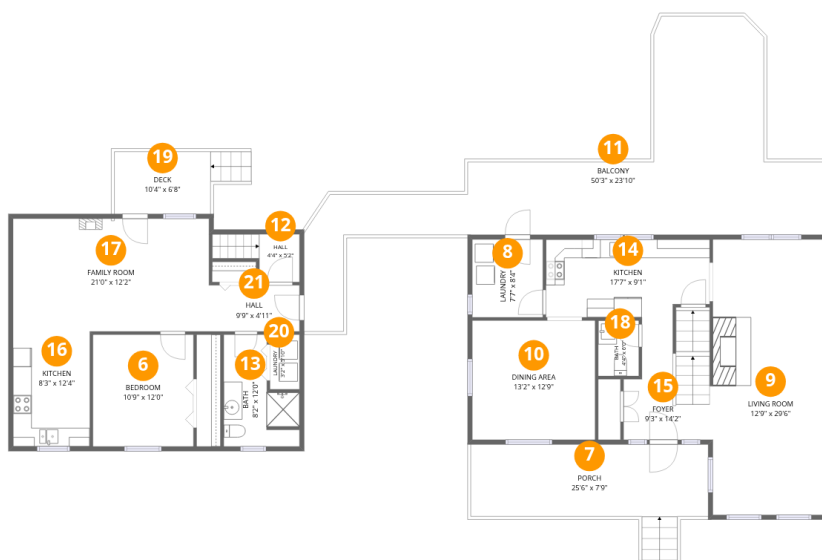
Floor 1 Below grade

Total:75sqft

Excluded: 1730sqft

#		Dimensions	sqft	Counted as living area
1	Storage	12'4" x 7'8"	86 sq. ft	No
2	Bath	11'6" x 7'8"	75 sq. ft	Yes
3	Garage	21'4" x 21'6"	460 sq. ft	No
4	Basement	16'5" x 29'7"	485 sq. ft	No
5	Garage	30'9" x 22'9"	700 sq. ft	No

1826 Toms Run Road, Holbrook, Pennsylvania 15341, United States



Room dimensions

Floor 2

Total:1658sqft Excluded: 897sqft

#		Dimensions	sqft	Counted as living area
6	Bedroom	10'9" x 12'0"	129 sq. ft	Yes
7	Porch	25'6" x 7'9"	215 sq. ft	No
8	Laundry	7'7" x 8'4"	63 sq. ft	Yes
9	Living Room	12'9" x 29'6"	370 sq. ft	Yes
10	Dining Area	13'2" x 12'9"	169 sq. ft	Yes
11	Balcony	50'3" x 23'10"	599 sq. ft	No
12	Hall	4'4" x 5'2"	35 sq. ft	Yes
13	Bath	8'2" x 12'0"	75 sq. ft	Yes
14	Kitchen	17'7" x 9'1"	144 sq. ft	Yes
15	Foyer	9'3" x 14'2"	109 sq. ft	Yes
16	Kitchen	8'3" x 12'4"	102 sq. ft	Yes

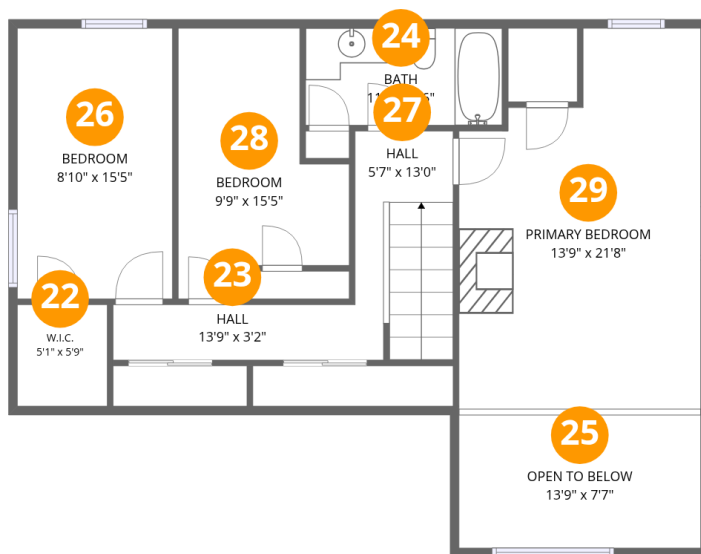
Home data report

1826 Toms Run Road, Holbrook, Pennsylvania 15341, United States

#		Dimensions	sqft	Counted as living area
17	Family Room	21'0" x 12'2"	254 sq. ft	Yes
18	Bath	4'4" x 6'0"	26 sq. ft	Yes
19	Deck	10'4" x 6'8"	83 sq. ft	No
20	Laundry	3'2" x 5'10"	19 sq. ft	Yes
21	Hall	9'9" x 4'11"	48 sq. ft	Yes

Home data report

1826 Toms Run Road, Holbrook, Pennsylvania 15341, United States



Room dimensions

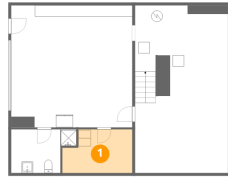
Floor 3

Total:837sqft Excluded: 109sqft

#		Dimensions	sqft	Counted as living area
22	W.I.C.	5'1" x 5'9"	29 sq. ft	Yes
23	Hall	13'9" x 3'2"	43 sq. ft	Yes
24	Bath	11'2" x 5'6"	62 sq. ft	Yes
25	Open To Below	13'9" x 7'7"	109 sq. ft	No
26	Bedroom	8'10" x 15'5"	136 sq. ft	Yes
27	Hall	5'7" x 13'0"	72 sq. ft	Yes
28	Bedroom	9'9" x 15'5"	116 sq. ft	Yes
29	Primary Bedroom	13'9" x 21'8"	262 sq. ft	Yes

1826 Toms Run Road, Holbrook, Pennsylvania 15341, United States

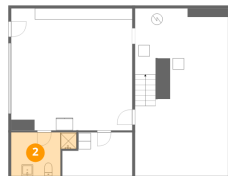
1 Floor 1 - Storage



Dimensions: 12'4" x 7'8"
Area: 86 sq. ft
Counted as living area: No

Heated: No
Finished: No
Enclosed: No
Contiguous: Yes
Permitted: Yes
Wet space: No
Addition: No
Conversion: No

2 Floor 1 - Bath

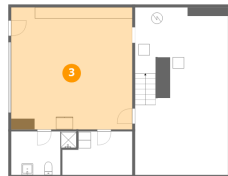


Dimensions: 11'6" x 7'8"
Area: 75 sq. ft
Counted as living area: Yes

Heated: Yes
Finished: Yes
Enclosed: Yes
Contiguous: Yes
Permitted: Yes
Wet space: Yes
Addition: No
Conversion: No

1826 Toms Run Road, Holbrook, Pennsylvania 15341, United States

3 Floor 1 - Garage



Dimensions: 21'4" x 21'6"
Area: 460 sq. ft
Counted as living area: No

Heated: No
Finished: No
Enclosed: Yes
Contiguous: Yes
Permitted: Yes
Wet space: No
Addition: No
Conversion: No

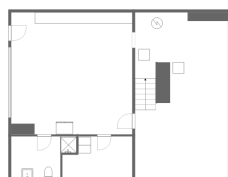
4 Floor 1 - Basement



Dimensions: 16'5" x 29'7"
Area: 485 sq. ft
Counted as living area: No

Heated: Yes
Finished: No
Enclosed: Yes
Contiguous: Yes
Permitted: Yes
Wet space: No
Addition: No
Conversion: No

5 Floor 1 - Garage



Dimensions: 30'9" x 22'9"
Area: 700 sq. ft
Counted as living area: No

Heated: No
Finished: No
Enclosed: Yes
Contiguous: Yes
Permitted: Yes
Wet space: No
Addition: No
Conversion: No

1826 Toms Run Road, Holbrook, Pennsylvania 15341, United States

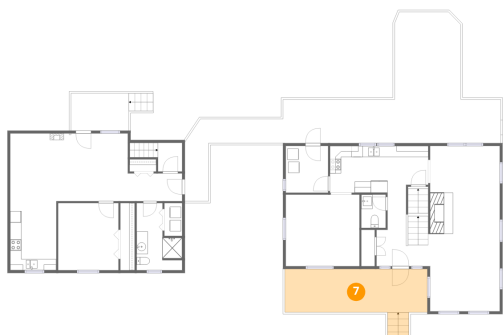
6 Floor 2 - Bedroom



Dimensions: 10'9" x 12'0"
Area: 129 sq. ft
Counted as living area: Yes

Heated: Yes
Finished: Yes
Enclosed: Yes
Contiguous: Yes
Permitted: Yes
Wet space: No
Addition: No
Conversion: No

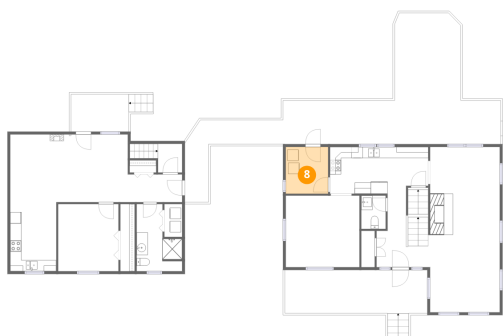
7 Floor 2 - Porch



Dimensions: 25'6" x 7'9"
Area: 215 sq. ft
Counted as living area: No

Heated: No
Finished: No
Enclosed: No
Contiguous: Yes
Permitted: Yes
Wet space: No
Addition: No
Conversion: No

8 Floor 2 - Laundry



Dimensions: 7'7" x 8'4"
Area: 63 sq. ft
Counted as living area: Yes

Heated: Yes
Finished: Yes
Enclosed: Yes
Contiguous: Yes
Permitted: Yes
Wet space: No
Addition: No
Conversion: No

1826 Toms Run Road, Holbrook, Pennsylvania 15341, United States

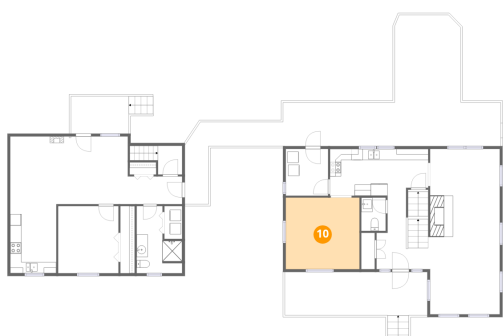
9 Floor 2 - Living Room



Dimensions: 12'9" x 29'6"
Area: 370 sq. ft
Counted as living area: Yes

Heated: Yes
Finished: Yes
Enclosed: Yes
Contiguous: Yes
Permitted: Yes
Wet space: No
Addition: No
Conversion: No

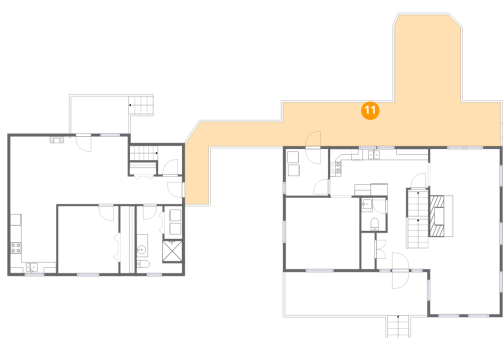
10 Floor 2 - Dining Area



Dimensions: 13'2" x 12'9"
Area: 169 sq. ft
Counted as living area: Yes

Heated: Yes
Finished: Yes
Enclosed: Yes
Contiguous: Yes
Permitted: Yes
Wet space: No
Addition: No
Conversion: No

11 Floor 2 - Balcony



Dimensions: 50'3" x 23'10"
Area: 599 sq. ft
Counted as living area: No

Heated: No
Finished: No
Enclosed: No
Contiguous: Yes
Permitted: Yes
Wet space: No
Addition: No
Conversion: No

1826 Toms Run Road, Holbrook, Pennsylvania 15341, United States

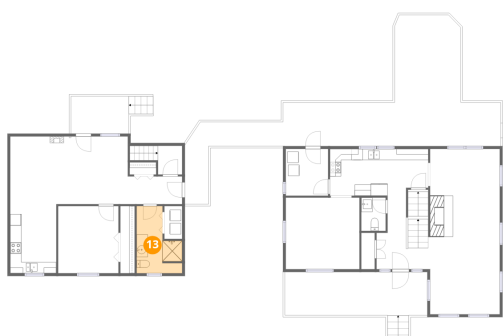
12 Floor 2 - Hall



Dimensions: 4'4" x 5'2"
Area: 35 sq. ft
Counted as living area: Yes

Heated: Yes
Finished: Yes
Enclosed: Yes
Contiguous: Yes
Permitted: Yes
Wet space: No
Addition: No
Conversion: No

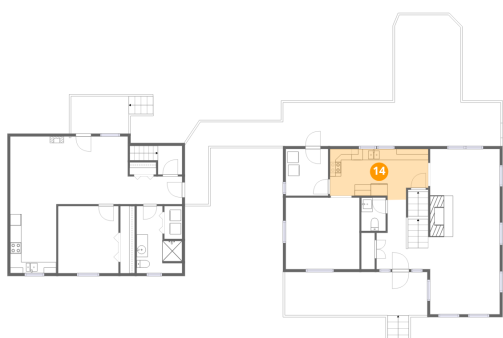
13 Floor 2 - Bath



Dimensions: 8'2" x 12'0"
Area: 75 sq. ft
Counted as living area: Yes

Heated: Yes
Finished: Yes
Enclosed: Yes
Contiguous: Yes
Permitted: Yes
Wet space: Yes
Addition: No
Conversion: No

14 Floor 2 - Kitchen

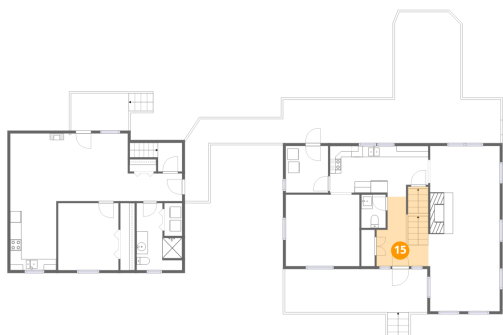


Dimensions: 17'7" x 9'1"
Area: 144 sq. ft
Counted as living area: Yes

Heated: Yes
Finished: Yes
Enclosed: Yes
Contiguous: Yes
Permitted: Yes
Wet space: No
Addition: No
Conversion: No

1826 Toms Run Road, Holbrook, Pennsylvania 15341, United States

15 Floor 2 - Foyer



Dimensions: 9'3" x 14'2"
Area: 109 sq. ft
Counted as living area: Yes

Heated: Yes
Finished: Yes
Enclosed: Yes
Contiguous: Yes
Permitted: Yes
Wet space: No
Addition: No
Conversion: No

16 Floor 2 - Kitchen



Dimensions: 8'3" x 12'4"
Area: 102 sq. ft
Counted as living area: Yes

Heated: Yes
Finished: Yes
Enclosed: Yes
Contiguous: Yes
Permitted: Yes
Wet space: No
Addition: No
Conversion: No

17 Floor 2 - Family Room



Dimensions: 21'0" x 12'2"
Area: 254 sq. ft
Counted as living area: Yes

Heated: Yes
Finished: Yes
Enclosed: Yes
Contiguous: Yes
Permitted: Yes
Wet space: No
Addition: No
Conversion: No

1826 Toms Run Road, Holbrook, Pennsylvania 15341, United States

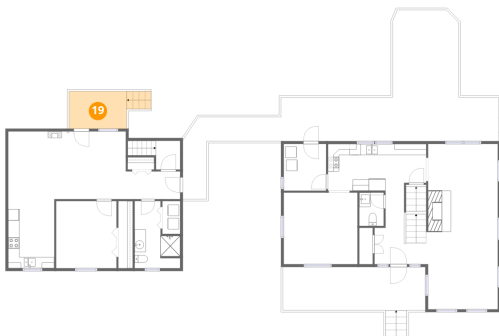
18 Floor 2 - Bath



Dimensions: 4'4" x 6'0"
Area: 26 sq. ft
Counted as living area: Yes

Heated: Yes
Finished: Yes
Enclosed: Yes
Contiguous: Yes
Permitted: Yes
Wet space: Yes
Addition: No
Conversion: No

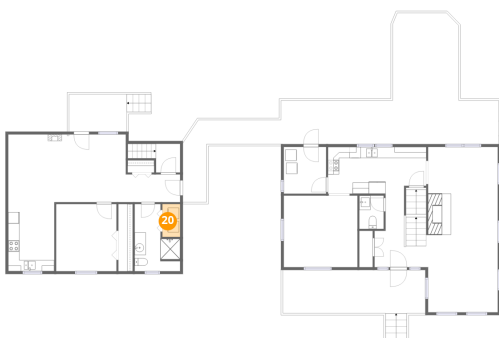
19 Floor 2 - Deck



Dimensions: 10'4" x 6'8"
Area: 83 sq. ft
Counted as living area: No

Heated: No
Finished: No
Enclosed: No
Contiguous: Yes
Permitted: Yes
Wet space: No
Addition: No
Conversion: No

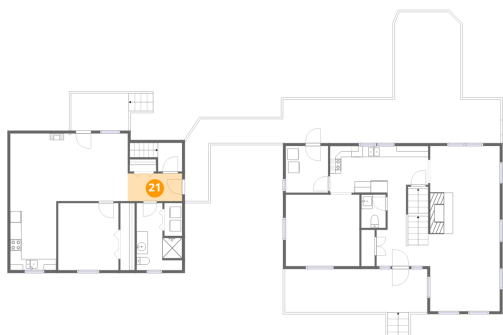
20 Floor 2 - Laundry



Dimensions: 3'2" x 5'10"
Area: 19 sq. ft
Counted as living area: Yes

Heated: Yes
Finished: Yes
Enclosed: Yes
Contiguous: Yes
Permitted: Yes
Wet space: No
Addition: No
Conversion: No

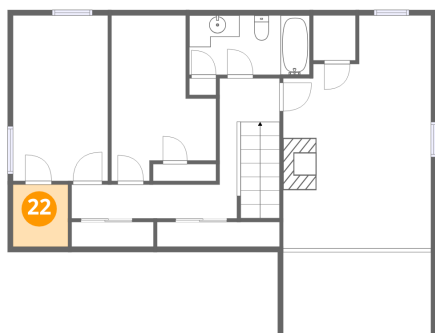
21 Floor 2 - Hall



Dimensions: 9'9" x 4'11"
Area: 48 sq. ft
Counted as living area: Yes

Heated: Yes
Finished: Yes
Enclosed: Yes
Contiguous: Yes
Permitted: Yes
Wet space: No
Addition: No
Conversion: No

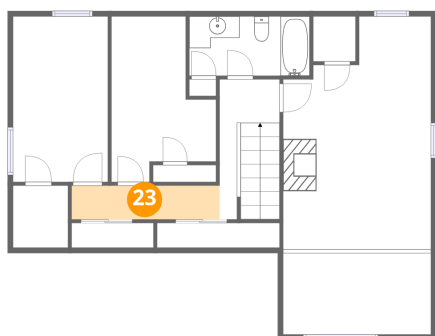
22 Floor 3 - W.I.C.



Dimensions: 5'1" x 5'9"
Area: 29 sq. ft
Counted as living area: Yes

Heated: Yes
Finished: Yes
Enclosed: Yes
Contiguous: Yes
Permitted: Yes
Wet space: No
Addition: No
Conversion: No

23 Floor 3 - Hall

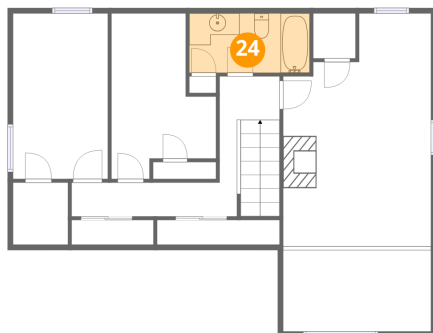


Dimensions: 13'9" x 3'2"
Area: 43 sq. ft
Counted as living area: Yes

Heated: Yes
Finished: Yes
Enclosed: Yes
Contiguous: Yes
Permitted: Yes
Wet space: No
Addition: No
Conversion: No

1826 Toms Run Road, Holbrook, Pennsylvania 15341, United States

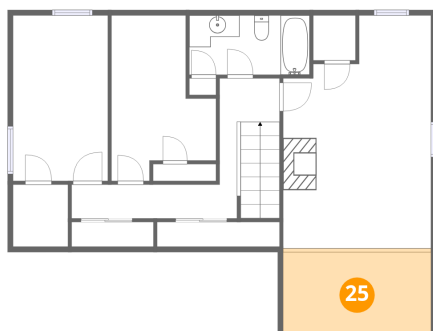
24 Floor 3 - Bath



Dimensions: 11'2" x 5'6"
Area: 62 sq. ft
Counted as living area: Yes

Heated: Yes
Finished: Yes
Enclosed: Yes
Contiguous: Yes
Permitted: Yes
Wet space: Yes
Addition: No
Conversion: No

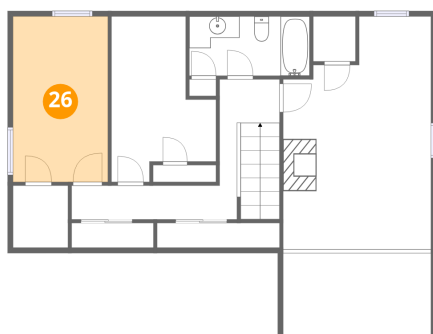
25 Floor 3 - Open To Below



Dimensions: 13'9" x 7'7"
Area: 109 sq. ft
Counted as living area: No

Heated: No
Finished: No
Enclosed: No
Contiguous: Yes
Permitted: No
Wet space: No
Addition: No
Conversion: No

26 Floor 3 - Bedroom

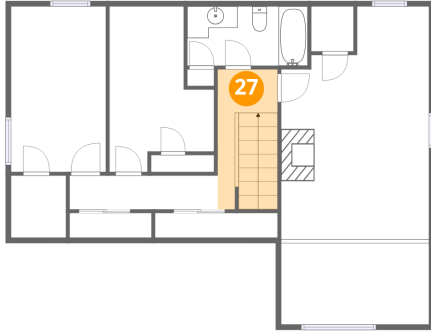


Dimensions: 8'10" x 15'5"
Area: 136 sq. ft
Counted as living area: Yes

Heated: Yes
Finished: Yes
Enclosed: Yes
Contiguous: Yes
Permitted: Yes
Wet space: No
Addition: No
Conversion: No

1826 Toms Run Road, Holbrook, Pennsylvania 15341, United States

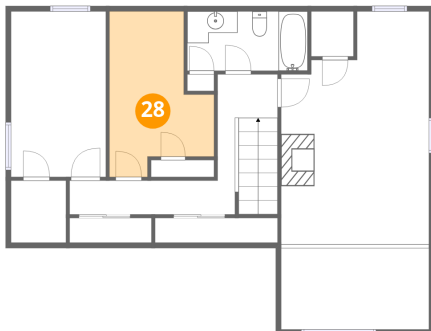
27 Floor 3 - Hall



Dimensions: 5'7" x 13'0"
Area: 72 sq. ft
Counted as living area: Yes

Heated: Yes
Finished: Yes
Enclosed: Yes
Contiguous: Yes
Permitted: Yes
Wet space: No
Addition: No
Conversion: No

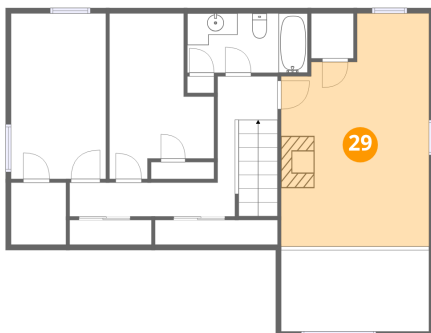
28 Floor 3 - Bedroom



Dimensions: 9'9" x 15'5"
Area: 116 sq. ft
Counted as living area: Yes

Heated: Yes
Finished: Yes
Enclosed: Yes
Contiguous: Yes
Permitted: Yes
Wet space: No
Addition: No
Conversion: No

29 Floor 3 - Primary Bedroom



Dimensions: 13'9" x 21'8"
Area: 262 sq. ft
Counted as living area: Yes

Heated: Yes
Finished: Yes
Enclosed: Yes
Contiguous: Yes
Permitted: Yes
Wet space: No
Addition: No
Conversion: No