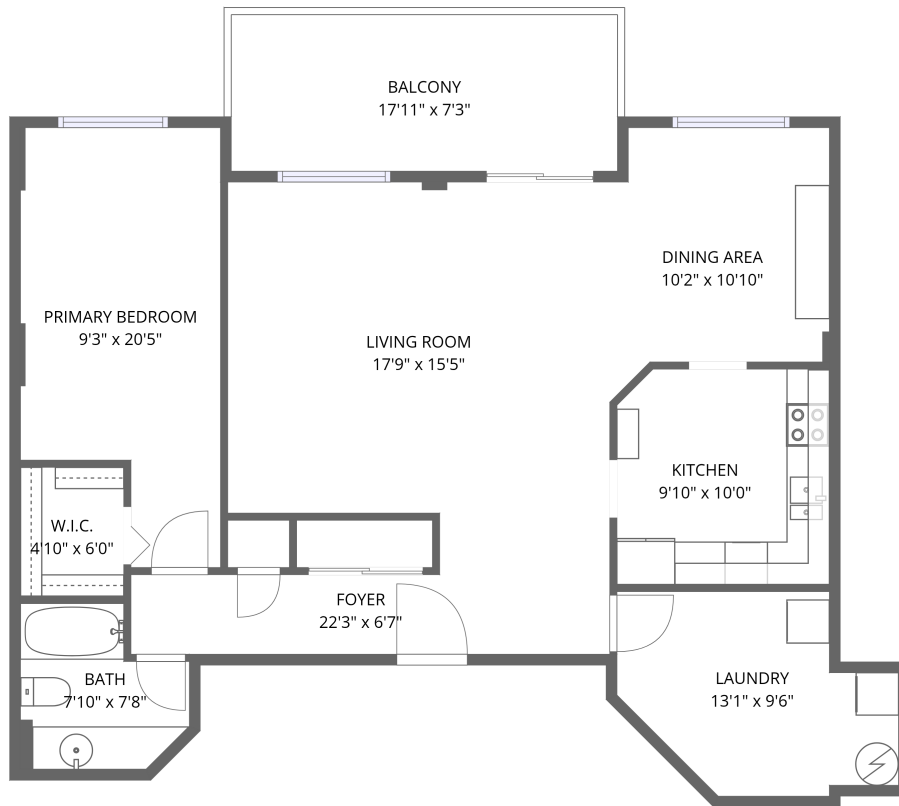


Home data report

215 Parkdale Avenue, Hintonburg, Tunney's Pasture, Ottawa,
Ontario, Canada, K1Y 4T8, 1504



1st floor

Total Area: 982 sq. ft

1st Floor: 982 sq. ft

Excluded: Balcony 131 sq. ft, Walls: 0 sq. ft

Property summary



1 Floors



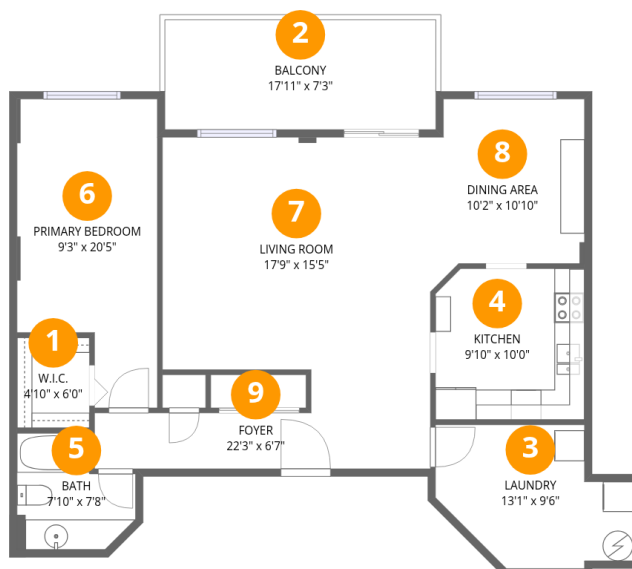
1 Bedrooms



1 Bathrooms

Home data report

215 Parkdale Avenue, Hintonburg, Tunney's Pasture, Ottawa, Ontario, Canada, K1Y 4T8, 1504



Room dimensions

Floor 1

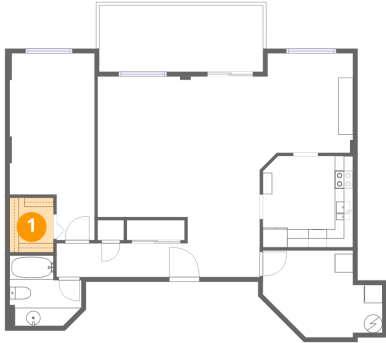
Total:982sqft

Excluded: 131sqft

#		Dimensions	sqft	Counted as living area
1	W.I.C.	4'10" x 6'0"	29 sq. ft	Yes
2	Balcony	17'11" x 7'3"	130 sq. ft	No
3	Laundry	13'1" x 9'6"	124 sq. ft	Yes
4	Kitchen	9'10" x 10'0"	99 sq. ft	Yes
5	Bath	7'10" x 7'8"	60 sq. ft	Yes
6	Primary Bedroom	9'3" x 20'5"	190 sq. ft	Yes
7	Living Room	17'9" x 15'5"	273 sq. ft	Yes
8	Dining Area	10'2" x 10'10"	110 sq. ft	Yes
9	Foyer	22'3" x 6'7"	146 sq. ft	Yes

215 Parkdale Avenue, Hintonburg, Tunney's Pasture, Ottawa,
Ontario, Canada, K1Y 4T8, 1504

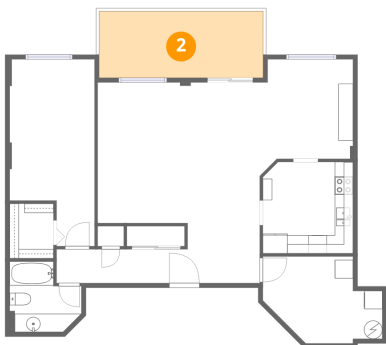
1 Floor 1 - W.I.C.



Dimensions: 4'10" x 6'0"
Area: 29 sq. ft
Counted as living area: Yes

Heated: Yes
Finished: Yes
Enclosed: Yes
Contiguous: Yes
Permitted: Yes
Wet space: No
Addition: No
Conversion: No

2 Floor 1 - Balcony

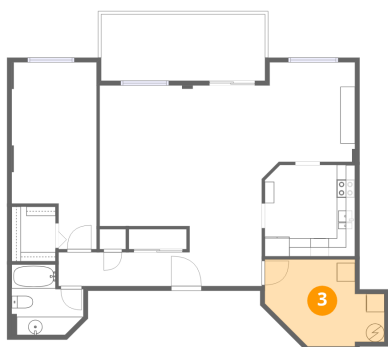


Dimensions: 17'11" x 7'3"
Area: 130 sq. ft
Counted as living area: No

Heated: No
Finished: No
Enclosed: No
Contiguous: Yes
Permitted: Yes
Wet space: No
Addition: No
Conversion: No

215 Parkdale Avenue, Hintonburg, Tunney's Pasture, Ottawa, Ontario, Canada, K1Y 4T8, 1504

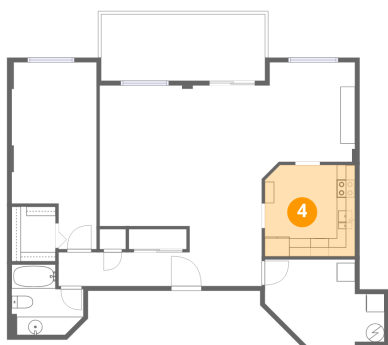
3 Floor 1 - Laundry



Dimensions: 13'1" x 9'6"
Area: 124 sq. ft
Counted as living area: Yes

Heated: Yes
Finished: Yes
Enclosed: Yes
Contiguous: Yes
Permitted: Yes
Wet space: No
Addition: No
Conversion: No

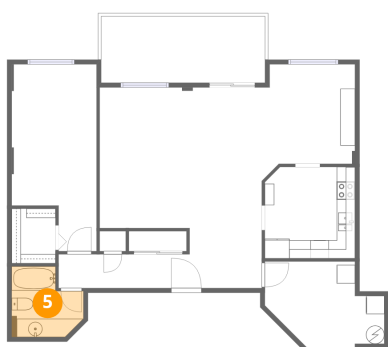
4 Floor 1 - Kitchen



Dimensions: 9'10" x 10'0"
Area: 99 sq. ft
Counted as living area: Yes

Heated: Yes
Finished: Yes
Enclosed: Yes
Contiguous: Yes
Permitted: Yes
Wet space: No
Addition: No
Conversion: No

5 Floor 1 - Bath

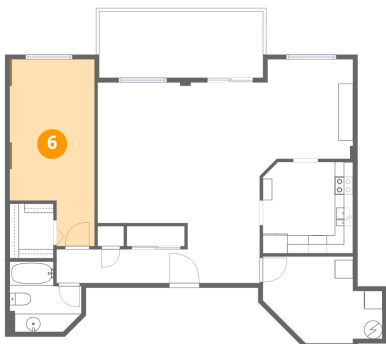


Dimensions: 7'10" x 7'8"
Area: 60 sq. ft
Counted as living area: Yes

Heated: Yes
Finished: Yes
Enclosed: Yes
Contiguous: Yes
Permitted: Yes
Wet space: Yes
Addition: No
Conversion: No

215 Parkdale Avenue, Hintonburg, Tunney's Pasture, Ottawa, Ontario, Canada, K1Y 4T8, 1504

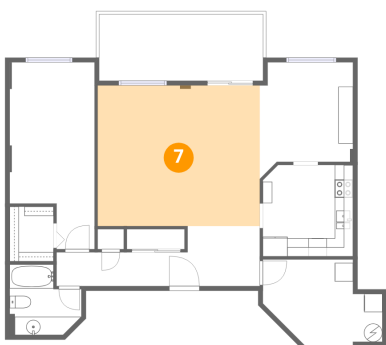
6 Floor 1 - Primary Bedroom



Dimensions: 9'3" x 20'5"
Area: 190 sq. ft
Counted as living area: Yes

Heated: Yes
Finished: Yes
Enclosed: Yes
Contiguous: Yes
Permitted: Yes
Wet space: No
Addition: No
Conversion: No

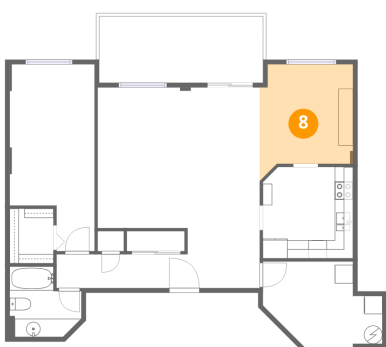
7 Floor 1 - Living Room



Dimensions: 17'9" x 15'5"
Area: 273 sq. ft
Counted as living area: Yes

Heated: Yes
Finished: Yes
Enclosed: Yes
Contiguous: Yes
Permitted: Yes
Wet space: No
Addition: No
Conversion: No

8 Floor 1 - Dining Area



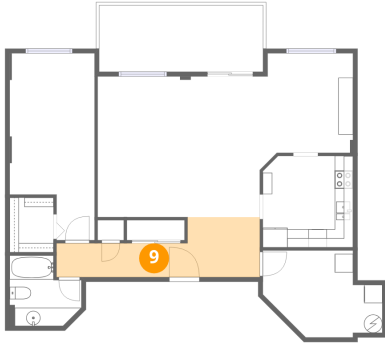
Dimensions: 10'2" x 10'10"
Area: 110 sq. ft
Counted as living area: Yes

Heated: Yes
Finished: Yes
Enclosed: Yes
Contiguous: Yes
Permitted: Yes
Wet space: No
Addition: No
Conversion: No

Home data report

215 Parkdale Avenue, Hintonburg, Tunney's Pasture, Ottawa,
Ontario, Canada, K1Y 4T8, 1504

9 Floor 1 - Foyer



Dimensions: 22'3" x 6'7"
Area: 146 sq. ft
Counted as living area: Yes

Heated: Yes
Finished: Yes
Enclosed: Yes
Contiguous: Yes
Permitted: Yes
Wet space: No
Addition: No
Conversion: No