

# 9 Hermon Rd, Lynn, MA, US




## Total Area: 1978 sq. ft

1st Floor: 365 sq. ft, 2nd Floor: 783 sq. ft, 3rd Floor: 830 sq. ft

Excluded: Garage 257 sq. ft, Undefined 31 sq. ft, Deck 397 sq. ft, Fireplace 14 sq. ft, Walls: 176 sq. ft

## Property summary

 **3** Floors

 **3** Bedrooms

 **1** Bathrooms

Home data report

# 9 Hermon Rd,Lynn,MA,US

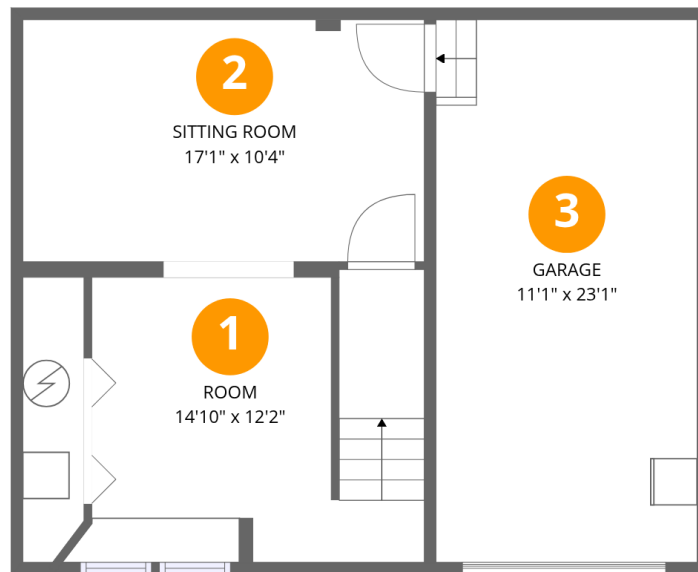


**1**  
Half baths



**1**  
Garages

# 9 Hermon Rd,Lynn,MA,US



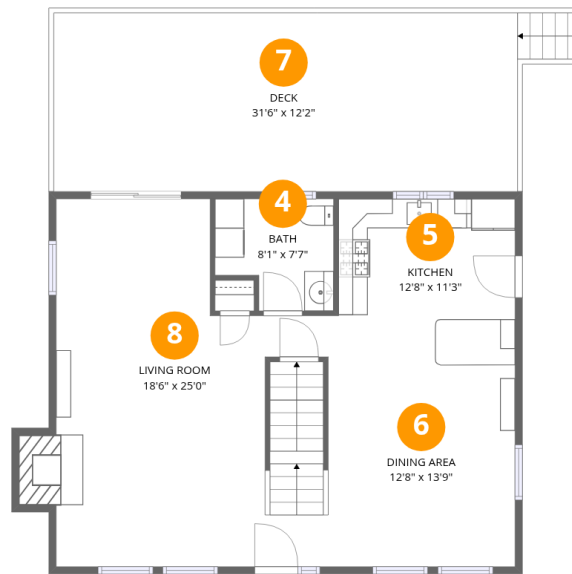
## Room dimensions

Floor 1

Total:365sqft

Excluded: 288sqft

#		Dimensions	sqft	Counted as living area
1	Room	14'10" x 12'2"	180 sq. ft	Yes
2	Sitting Room	17'1" x 10'4"	176 sq. ft	Yes
3	Garage	11'1" x 23'1"	257 sq. ft	No

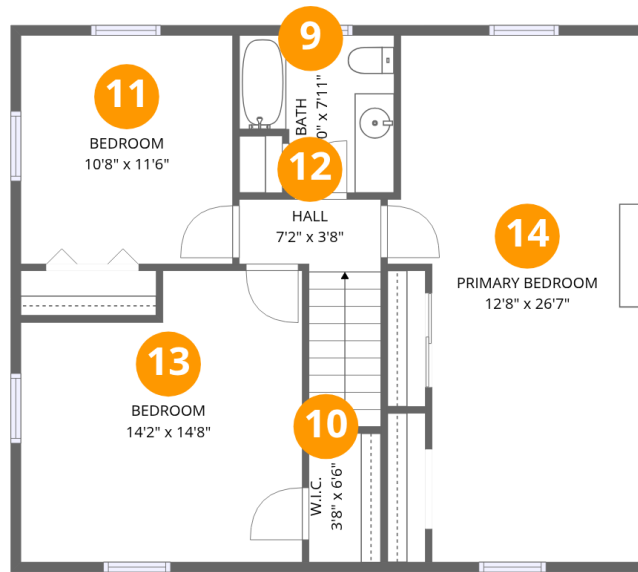


## Room dimensions

Floor 2

Total:783sqft Excluded: 411sqft

#		Dimensions	sqft	Counted as living area
4	Bath	8'1" x 7'7"	61 sq. ft	Yes
5	Kitchen	12'8" x 11'3"	143 sq. ft	Yes
6	Dining Area	12'8" x 13'9"	174 sq. ft	Yes
7	Deck	31'6" x 12'2"	383 sq. ft	No
8	Living Room	18'6" x 25'0"	462 sq. ft	Yes



## Room dimensions

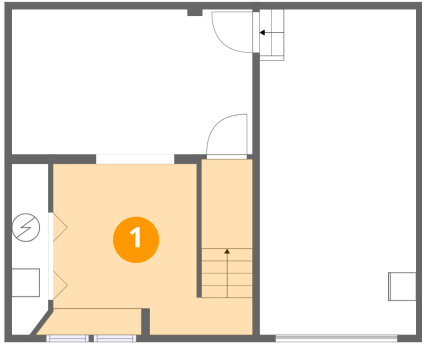
Floor 3

Total:830sqft

Excluded: 0sqft

#		Dimensions	sqft	Counted as living area
9	Bath	7'10" x 7'11"	62 sq. ft	Yes
10	W.I.C.	3'8" x 6'6"	23 sq. ft	Yes
11	Bedroom	10'8" x 11'6"	123 sq. ft	Yes
12	Hall	7'2" x 3'8"	26 sq. ft	Yes
13	Bedroom	14'2" x 14'8"	208 sq. ft	Yes
14	Primary Bedroom	12'8" x 26'7"	338 sq. ft	Yes

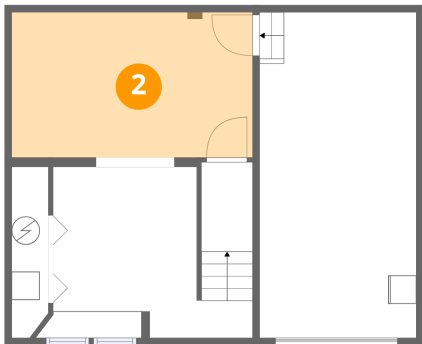
## 1 Floor 1 - Room



Dimensions: 14'10" x 12'2"  
Area: 180 sq. ft  
Counted as living area: No

Heated: Yes  
Finished: Yes  
Enclosed: Yes  
Contiguous: No  
Permitted: Yes  
Wet space: No  
Addition: No  
Conversion: No

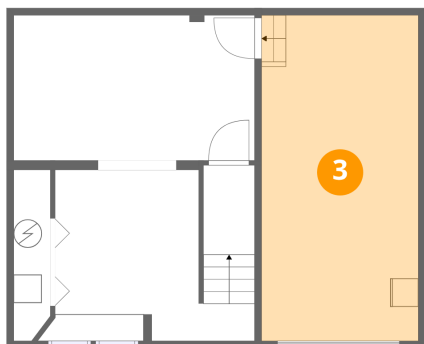
## 2 Floor 1 - Sitting Room



Dimensions: 17'1" x 10'4"  
Area: 176 sq. ft  
Counted as living area: No

Heated: Yes  
Finished: Yes  
Enclosed: Yes  
Contiguous: No  
Permitted: Yes  
Wet space: No  
Addition: No  
Conversion: No

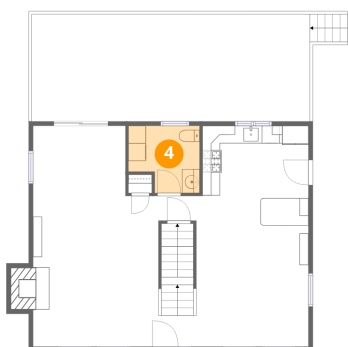
### 3 Floor 1 - Garage



Dimensions: 11'1" x 23'1"  
Area: 257 sq. ft  
Counted as living area: No

Heated: No  
Finished: No  
Enclosed: Yes  
Contiguous: Yes  
Permitted: Yes  
Wet space: No  
Addition: No  
Conversion: No

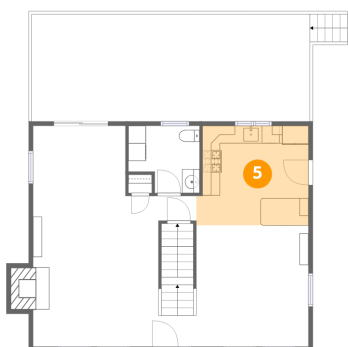
### 4 Floor 2 - Bath



Dimensions: 8'1" x 7'7"  
Area: 61 sq. ft  
Counted as living area: Yes

Heated: Yes  
Finished: Yes  
Enclosed: Yes  
Contiguous: Yes  
Permitted: Yes  
Wet space: Yes  
Addition: No  
Conversion: No

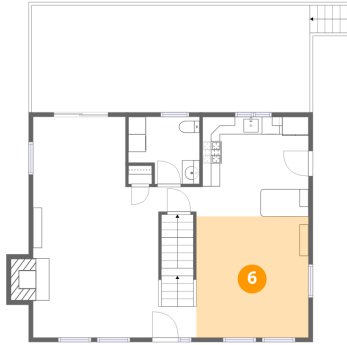
### 5 Floor 2 - Kitchen



Dimensions: 12'8" x 11'3"  
Area: 143 sq. ft  
Counted as living area: Yes

Heated: Yes  
Finished: Yes  
Enclosed: Yes  
Contiguous: Yes  
Permitted: Yes  
Wet space: No  
Addition: No  
Conversion: No

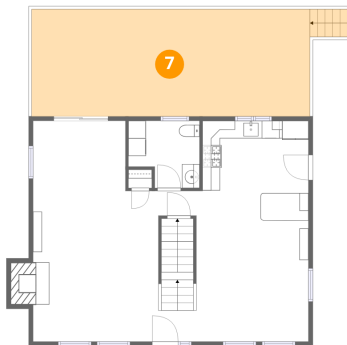
## 6 Floor 2 - Dining Area



Dimensions: 12'8" x 13'9"  
Area: 174 sq. ft  
Counted as living area: Yes

Heated: Yes  
Finished: Yes  
Enclosed: Yes  
Contiguous: Yes  
Permitted: Yes  
Wet space: No  
Addition: No  
Conversion: No

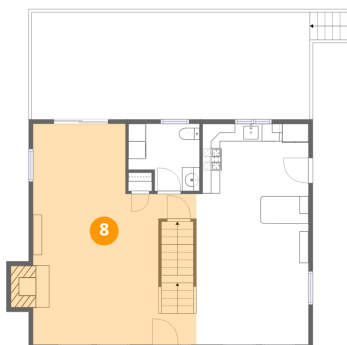
## 7 Floor 2 - Deck



Dimensions: 31'6" x 12'2"  
Area: 383 sq. ft  
Counted as living area: No

Heated: No  
Finished: No  
Enclosed: No  
Contiguous: Yes  
Permitted: Yes  
Wet space: No  
Addition: No  
Conversion: No

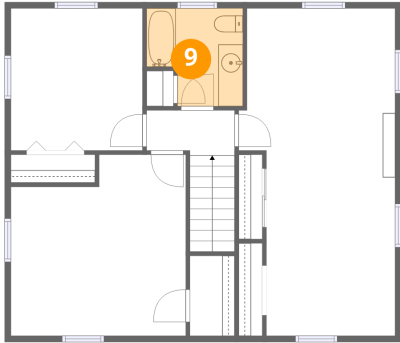
## 8 Floor 2 - Living Room



Dimensions: 18'6" x 25'0"  
Area: 462 sq. ft  
Counted as living area: Yes

Heated: Yes  
Finished: Yes  
Enclosed: Yes  
Contiguous: Yes  
Permitted: Yes  
Wet space: No  
Addition: No  
Conversion: No

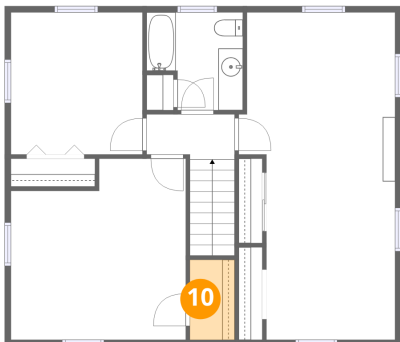
### 9 Floor 3 - Bath



Dimensions: 7'10" x 7'11"  
Area: 62 sq. ft  
Counted as living area: Yes

Heated: Yes  
Finished: Yes  
Enclosed: Yes  
Contiguous: Yes  
Permitted: Yes  
Wet space: Yes  
Addition: No  
Conversion: No

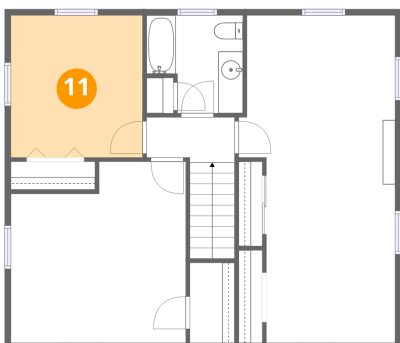
### 10 Floor 3 - W.I.C.



Dimensions: 3'8" x 6'6"  
Area: 23 sq. ft  
Counted as living area: Yes

Heated: Yes  
Finished: Yes  
Enclosed: Yes  
Contiguous: Yes  
Permitted: Yes  
Wet space: No  
Addition: No  
Conversion: No

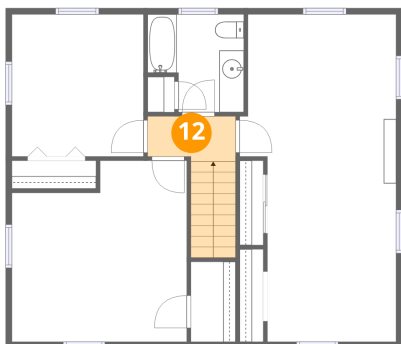
### 11 Floor 3 - Bedroom



Dimensions: 10'8" x 11'6"  
Area: 123 sq. ft  
Counted as living area: Yes

Heated: Yes  
Finished: Yes  
Enclosed: Yes  
Contiguous: Yes  
Permitted: Yes  
Wet space: No  
Addition: No  
Conversion: No

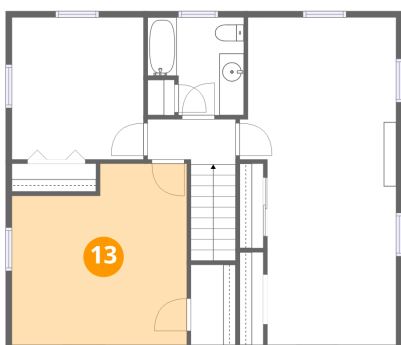
### 12 Floor 3 - Hall



Dimensions: 7'2" x 3'8"  
Area: 26 sq. ft  
Counted as living area: Yes

Heated: Yes  
Finished: Yes  
Enclosed: Yes  
Contiguous: Yes  
Permitted: Yes  
Wet space: No  
Addition: No  
Conversion: No

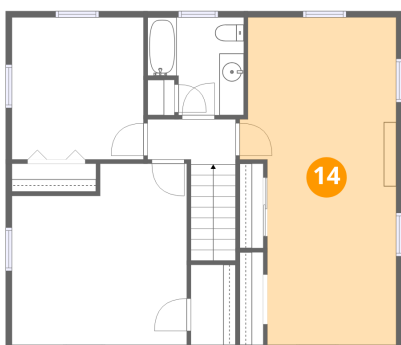
### 13 Floor 3 - Bedroom



Dimensions: 14'2" x 14'8"  
Area: 208 sq. ft  
Counted as living area: Yes

Heated: Yes  
Finished: Yes  
Enclosed: Yes  
Contiguous: Yes  
Permitted: Yes  
Wet space: No  
Addition: No  
Conversion: No

### 14 Floor 3 - Primary Bedroom



Dimensions: 12'8" x 26'7"  
Area: 338 sq. ft  
Counted as living area: Yes

Heated: Yes  
Finished: Yes  
Enclosed: Yes  
Contiguous: Yes  
Permitted: Yes  
Wet space: No  
Addition: No  
Conversion: No