

Home data report

138 2nd Street, Pleasantville, PA, US



Total Area: 2637 sq. ft

Basement 1: 0 sq. ft, 1st Floor: 0 sq. ft, 2nd Floor: 0 sq. ft, 3rd Floor: 0 sq. ft, 4th Floor: 1121 sq. ft, 5th Floor: 1095 sq. ft, 6th Floor: 421 sq. ft


Excluded: Basement 678 sq. ft, Low ceiling 466 sq. ft, Covered patio 507 sq. ft, Shed 256 sq. ft, Garage 1082 sq. ft, Storage 80 sq. ft, Screened porch 294 sq. ft, Porch 101 sq. ft, Deck 574 sq. ft, Patio 171 sq. ft, Fireplace 9 sq. ft, Cl 78 sq. ft, Attic 111 sq. ft, Walls: 450 sq. ft

Property summary

Home data report

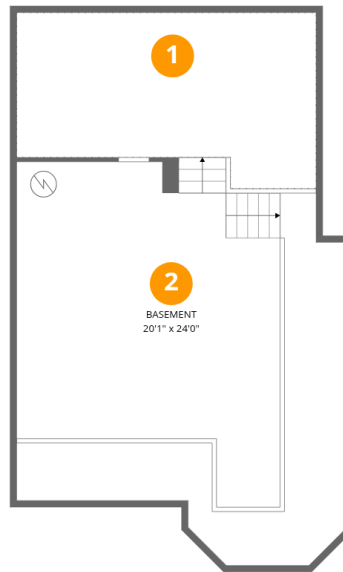
138 2nd Street, Pleasantville, PA, US

 **7**
Floors

 **4**
Bedrooms

 **2**
Bathrooms

 **1**
Garages



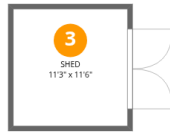
Room dimensions

Floor 1 Below grade

Total: 0sqft

Excluded: 946sqft

#		Dimensions	sqft	Counted as living area
1	Crawl Space	22'10" x 13'5"	307 sq. ft	No
2	Basement	20'1" x 24'0"	482 sq. ft	No



Room dimensions

Floor 2

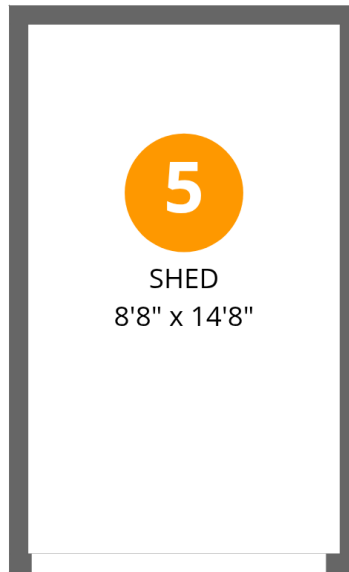
Total: 0sqft

Excluded: 362sqft

#		Dimensions	sqft	Counted as living area
3	Shed	11'3" x 11'6"	129 sq. ft	No
4	Covered Patio	10'2" x 22'6"	229 sq. ft	No

Home data report

138 2nd Street,Pleasantville,PA,US



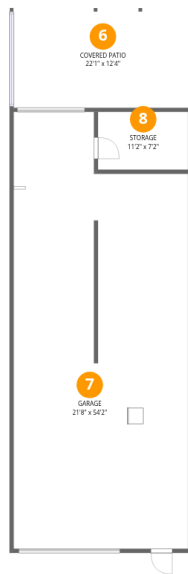
Room dimensions

Floor 3

Total:0sqft

Excluded: 127sqft

#		Dimensions	sqft	Counted as living area
5	Shed	8'8" x 14'8"	127 sq. ft	No



Room dimensions

Floor 4

Total: 0 sqft

Excluded: 1436 sqft

#		Dimensions	sqft	Counted as living area
6	Covered Patio	22'1" x 12'4"	272 sq. ft	No
7	Garage	21'8" x 54'2"	1172 sq. ft	No
8	Storage	11'2" x 7'2"	80 sq. ft	No

Home data report

138 2nd Street, Pleasantville, PA, US



Room dimensions

Floor 5

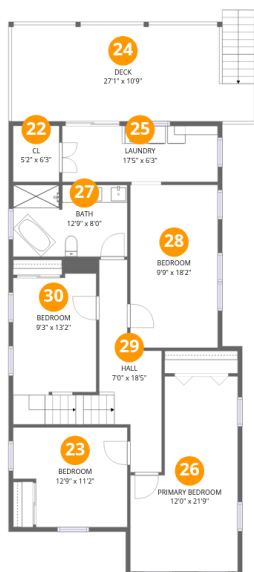
Total: 1121 sqft Excluded: 853 sqft

#		Dimensions	sqft	Counted as living area
9	Breakfast Nook	9'9" x 13'5"	131 sq. ft	Yes
10	Foyer	12'9" x 14'9"	188 sq. ft	Yes
11	Deck	23'10" x 11'1"	264 sq. ft	No
12	Dining Area	12'9" x 13'1"	167 sq. ft	Yes
13	Living Room	12'0" x 24'8"	296 sq. ft	Yes
14	Hall	13'6" x 7'3"	98 sq. ft	Yes
15	Patio	23'10" x 6'11"	165 sq. ft	No
16	Kitchen	12'9" x 8'9"	111 sq. ft	Yes
17	Screened Porch	25'1" x 13'10"	347 sq. ft	No
18	W.I.C.	3'9" x 7'3"	27 sq. ft	Yes
19	Entry	2'9" x 3'4"	9 sq. ft	Yes

Home data report

138 2nd Street,Pleasantville,PA,US

#		Dimensions	sqft	Counted as living area
20	Bath	5'0" x 7'3"	36 sq. ft	Yes
21	Porch	7'9" x 8'5"	65 sq. ft	No



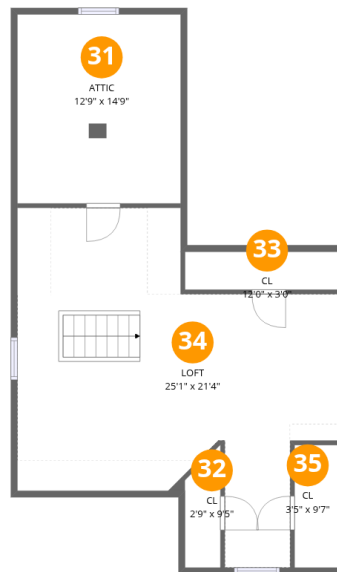
Room dimensions

Floor 6

Total: 1095 sqft

Excluded: 328 sqft

#		Dimensions	sqft	Counted as living area
22	Cl	5'2" x 6'3"	32 sq. ft	No
23	Bedroom	12'9" x 11'2"	142 sq. ft	Yes
24	Deck	27'1" x 10'9"	291 sq. ft	No
25	Laundry	17'5" x 6'3"	109 sq. ft	Yes
26	Primary Bedroom	12'0" x 21'9"	261 sq. ft	Yes
27	Bath	12'9" x 8'0"	102 sq. ft	Yes
28	Bedroom	9'9" x 18'2"	178 sq. ft	Yes
29	Hall	7'0" x 18'5"	128 sq. ft	Yes
30	Bedroom	9'3" x 13'2"	122 sq. ft	Yes



Room dimensions

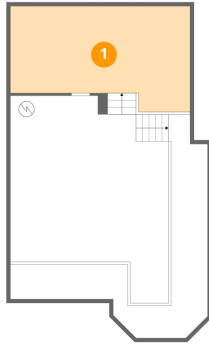
Floor 7

Total: 421 sqft

Excluded: 355 sqft

#		Dimensions	sqft	Counted as living area
31	Attic	12'9" x 14'9"	188 sq. ft	No
32	Cl	2'9" x 9'5"	26 sq. ft	No
33	Cl	12'0" x 3'0"	36 sq. ft	No
34	Loft	25'1" x 21'4"	536 sq. ft	Yes
35	Cl	3'5" x 9'7"	33 sq. ft	No

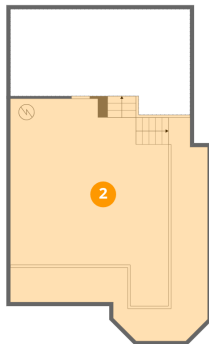
1 Floor 1 - Crawl Space



Dimensions: 22'10" x 13'5"
Area: 307 sq. ft
Counted as living area: No

Heated: No
Finished: No
Enclosed: No
Contiguous: Yes
Permitted: No
Wet space: No
Addition: No
Conversion: No

2 Floor 1 - Basement



Dimensions: 20'1" x 24'0"
Area: 482 sq. ft
Counted as living area: No

Heated: Yes
Finished: No
Enclosed: Yes
Contiguous: Yes
Permitted: Yes
Wet space: No
Addition: No
Conversion: No

3 Floor 2 - Shed



Dimensions: 11'3" x 11'6"
Area: 129 sq. ft
Counted as living area: No

Heated: No
Finished: No
Enclosed: No
Contiguous: Yes
Permitted: Yes
Wet space: No
Addition: No
Conversion: No

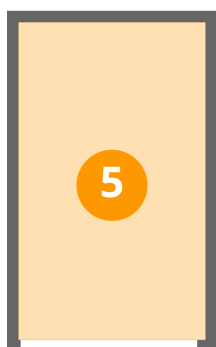
4 Floor 2 - Covered Patio



Dimensions: 10'2" x 22'6"
Area: 229 sq. ft
Counted as living area: No

Heated: No
Finished: No
Enclosed: No
Contiguous: Yes
Permitted: Yes
Wet space: No
Addition: No
Conversion: No

5 Floor 3 - Shed



Dimensions: 8'8" x 14'8"
Area: 127 sq. ft
Counted as living area: No

Heated: No
Finished: No
Enclosed: No
Contiguous: Yes
Permitted: Yes
Wet space: No
Addition: No
Conversion: No

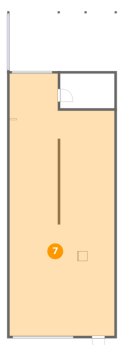
6 Floor 4 - Covered Patio



Dimensions: 22'1" x 12'4"
Area: 272 sq. ft
Counted as living area: No

Heated: No
Finished: No
Enclosed: No
Contiguous: Yes
Permitted: Yes
Wet space: No
Addition: No
Conversion: No

7 Floor 4 - Garage



Dimensions: 21'8" x 54'2"
Area: 1172 sq. ft
Counted as living area: No

Heated: No
Finished: No
Enclosed: Yes
Contiguous: Yes
Permitted: Yes
Wet space: No
Addition: No
Conversion: No

8 Floor 4 - Storage



Dimensions: 11'2" x 7'2"
Area: 80 sq. ft
Counted as living area: No

Heated: No
Finished: No
Enclosed: No
Contiguous: Yes
Permitted: Yes
Wet space: No
Addition: No
Conversion: No

9 Floor 5 - Breakfast Nook



Dimensions: 9'9" x 13'5"
Area: 131 sq. ft
Counted as living area: Yes

Heated: Yes
Finished: Yes
Enclosed: Yes
Contiguous: Yes
Permitted: Yes
Wet space: No
Addition: No
Conversion: No

10 Floor 5 - Foyer



Dimensions: 12'9" x 14'9"
Area: 188 sq. ft
Counted as living area: Yes

Heated: Yes
Finished: Yes
Enclosed: Yes
Contiguous: Yes
Permitted: Yes
Wet space: No
Addition: No
Conversion: No

11 Floor 5 - Deck



Dimensions: 23'10" x 11'1"
Area: 264 sq. ft
Counted as living area: No

Heated: No
Finished: No
Enclosed: No
Contiguous: Yes
Permitted: Yes
Wet space: No
Addition: No
Conversion: No

12 Floor 5 - Dining Area



Dimensions: 12'9" x 13'1"
Area: 167 sq. ft
Counted as living area: Yes

Heated: Yes
Finished: Yes
Enclosed: Yes
Contiguous: Yes
Permitted: Yes
Wet space: No
Addition: No
Conversion: No

13 Floor 5 - Living Room



Dimensions: 12'0" x 24'8"
Area: 296 sq. ft
Counted as living area: Yes

Heated: Yes
Finished: Yes
Enclosed: Yes
Contiguous: Yes
Permitted: Yes
Wet space: No
Addition: No
Conversion: No

14 Floor 5 - Hall



Dimensions: 13'6" x 7'3"
Area: 98 sq. ft
Counted as living area: Yes

Heated: Yes
Finished: Yes
Enclosed: Yes
Contiguous: Yes
Permitted: Yes
Wet space: No
Addition: No
Conversion: No

15 Floor 5 - Patio



Dimensions: 23'10" x 6'11"
Area: 165 sq. ft
Counted as living area: No

Heated: No
Finished: No
Enclosed: No
Contiguous: Yes
Permitted: Yes
Wet space: No
Addition: No
Conversion: No

16 Floor 5 - Kitchen



Dimensions: 12'9" x 8'9"
Area: 111 sq. ft
Counted as living area: Yes

Heated: Yes
Finished: Yes
Enclosed: Yes
Contiguous: Yes
Permitted: Yes
Wet space: No
Addition: No
Conversion: No

17 Floor 5 - Screened Porch



Dimensions: 25'1" x 13'10"
Area: 347 sq. ft
Counted as living area: No

Heated: No
Finished: No
Enclosed: No
Contiguous: Yes
Permitted: Yes
Wet space: No
Addition: No
Conversion: No

18 Floor 5 - W.I.C.



Dimensions: 3'9" x 7'3"
Area: 27 sq. ft
Counted as living area: Yes

Heated: Yes
Finished: Yes
Enclosed: Yes
Contiguous: Yes
Permitted: Yes
Wet space: No
Addition: No
Conversion: No

19 Floor 5 - Entry



Dimensions: 2'9" x 3'4"
Area: 9 sq. ft
Counted as living area: Yes

Heated: Yes
Finished: Yes
Enclosed: Yes
Contiguous: Yes
Permitted: Yes
Wet space: No
Addition: No
Conversion: No

20 Floor 5 - Bath



Dimensions: 5'0" x 7'3"
Area: 36 sq. ft
Counted as living area: Yes

Heated: Yes
Finished: Yes
Enclosed: Yes
Contiguous: Yes
Permitted: Yes
Wet space: Yes
Addition: No
Conversion: No

21 Floor 5 - Porch



Dimensions: 7'9" x 8'5"
Area: 65 sq. ft
Counted as living area: No

Heated: No
Finished: No
Enclosed: No
Contiguous: Yes
Permitted: Yes
Wet space: No
Addition: No
Conversion: No

22 Floor 6 - Cl



Dimensions: 5'2" x 6'3"
Area: 32 sq. ft
Counted as living area: No

Heated: Yes
Finished: No
Enclosed: Yes
Contiguous: Yes
Permitted: Yes
Wet space: No
Addition: No
Conversion: No

23 Floor 6 - Bedroom



Dimensions: 12'9" x 11'2"
Area: 142 sq. ft
Counted as living area: Yes

Heated: Yes
Finished: Yes
Enclosed: Yes
Contiguous: Yes
Permitted: Yes
Wet space: No
Addition: No
Conversion: No

24 Floor 6 - Deck



Dimensions: 27'1" x 10'9"
Area: 291 sq. ft
Counted as living area: No

Heated: No
Finished: No
Enclosed: No
Contiguous: Yes
Permitted: Yes
Wet space: No
Addition: No
Conversion: No

25 Floor 6 - Laundry



Dimensions: 17'5" x 6'3"
Area: 109 sq. ft
Counted as living area: Yes

Heated: Yes
Finished: Yes
Enclosed: Yes
Contiguous: Yes
Permitted: Yes
Wet space: No
Addition: No
Conversion: No

26 Floor 6 - Primary Bedroom



Dimensions: 12'0" x 21'9"
Area: 261 sq. ft
Counted as living area: Yes

Heated: Yes
Finished: Yes
Enclosed: Yes
Contiguous: Yes
Permitted: Yes
Wet space: No
Addition: No
Conversion: No

27 Floor 6 - Bath



Dimensions: 12'9" x 8'0"
Area: 102 sq. ft
Counted as living area: Yes

Heated: Yes
Finished: Yes
Enclosed: Yes
Contiguous: Yes
Permitted: Yes
Wet space: Yes
Addition: No
Conversion: No

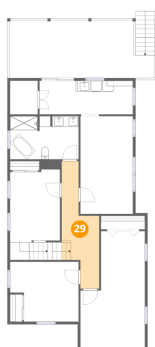
28 Floor 6 - Bedroom



Dimensions: 9'9" x 18'2"
Area: 178 sq. ft
Counted as living area: Yes

Heated: Yes
Finished: Yes
Enclosed: Yes
Contiguous: Yes
Permitted: Yes
Wet space: No
Addition: No
Conversion: No

29 Floor 6 - Hall



Dimensions: 7'0" x 18'5"
Area: 128 sq. ft
Counted as living area: Yes

Heated: Yes
Finished: Yes
Enclosed: Yes
Contiguous: Yes
Permitted: Yes
Wet space: No
Addition: No
Conversion: No

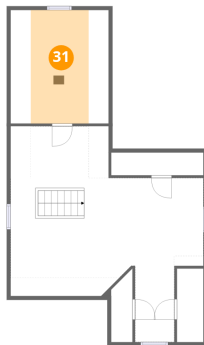
30 Floor 6 - Bedroom



Dimensions: 9'3" x 13'2"
Area: 122 sq. ft
Counted as living area: Yes

Heated: Yes
Finished: Yes
Enclosed: Yes
Contiguous: Yes
Permitted: Yes
Wet space: No
Addition: No
Conversion: No

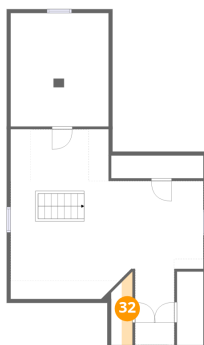
31 Floor 7 - Attic



Dimensions: 12'9" x 14'9"
Area: 188 sq. ft
Counted as living area: No

Heated: No
Finished: No
Enclosed: Yes
Contiguous: Yes
Permitted: Yes
Wet space: No
Addition: No
Conversion: No

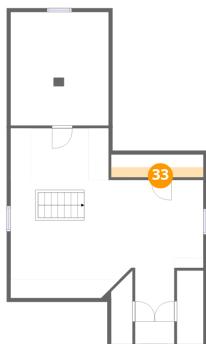
32 Floor 7 - Cl



Dimensions: 2'9" x 9'5"
Area: 26 sq. ft
Counted as living area: No

Heated: Yes
Finished: No
Enclosed: Yes
Contiguous: Yes
Permitted: Yes
Wet space: No
Addition: No
Conversion: No

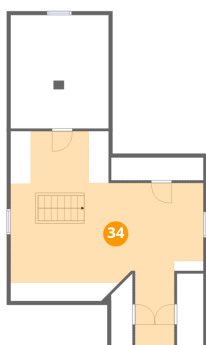
33 Floor 7 - Cl



Dimensions: 12'0" x 3'0"
Area: 36 sq. ft
Counted as living area: No

Heated: Yes
Finished: No
Enclosed: Yes
Contiguous: Yes
Permitted: Yes
Wet space: No
Addition: No
Conversion: No

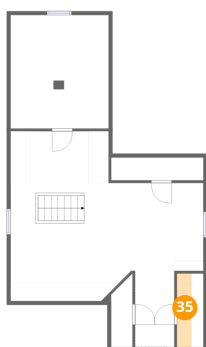
34 Floor 7 - Loft



Dimensions: 25'1" x 21'4"
Area: 536 sq. ft
Counted as living area: Yes

Heated: Yes
Finished: Yes
Enclosed: Yes
Contiguous: Yes
Permitted: Yes
Wet space: No
Addition: No
Conversion: No

35 Floor 7 - Cl



Dimensions: 3'5" x 9'7"
Area: 33 sq. ft
Counted as living area: No

Heated: Yes
Finished: No
Enclosed: Yes
Contiguous: Yes
Permitted: Yes
Wet space: No
Addition: No
Conversion: No