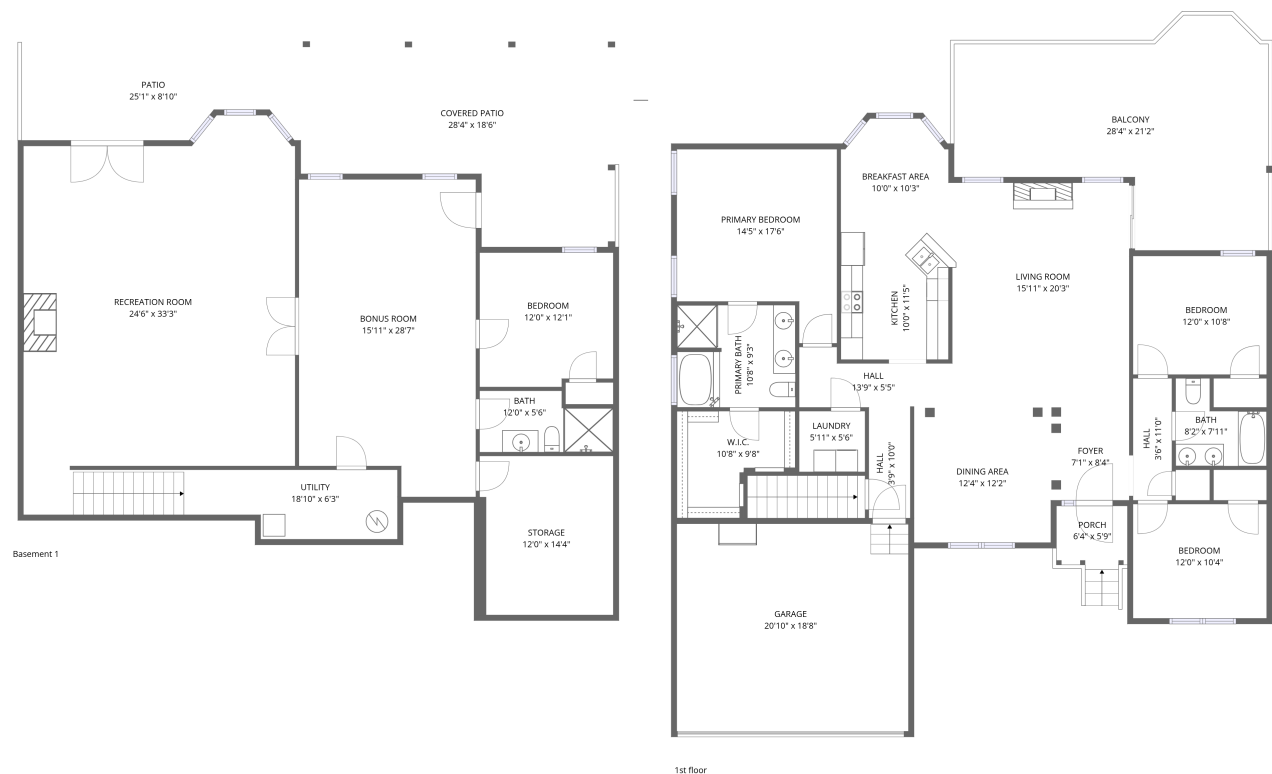


Home data report

225 Woods Edge Drive, Rocky Mount, Virginia 24151, United States




Total Area: 3202 sq. ft


Below Ground: 1463 sq. ft, 1st Floor: 1739 sq. ft

Excluded: Utility 104 sq. ft, Covered patio 417 sq. ft, Patio 203 sq. ft, Storage 172 sq. ft, Garage 390 sq. ft, Porch 45 sq. ft, Balcony 437 sq. ft, Walls: 230 sq. ft

Property summary

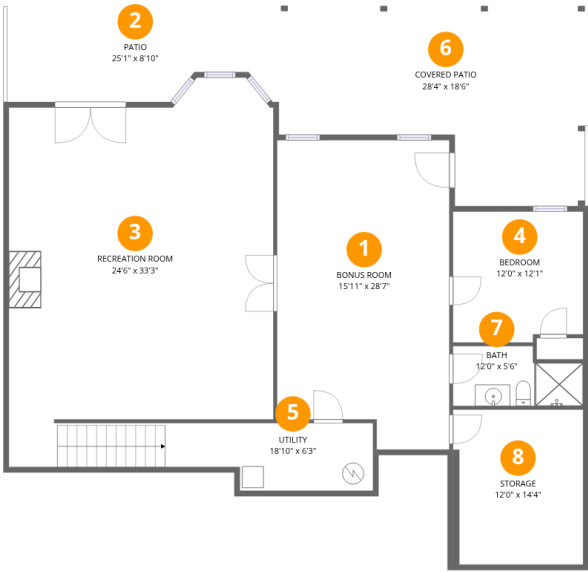
 **2** Floors

 **4** Bedrooms

 **3** Bathrooms

 **1** Garages

225 Woods Edge Drive, Rocky Mount, Virginia 24151, United States



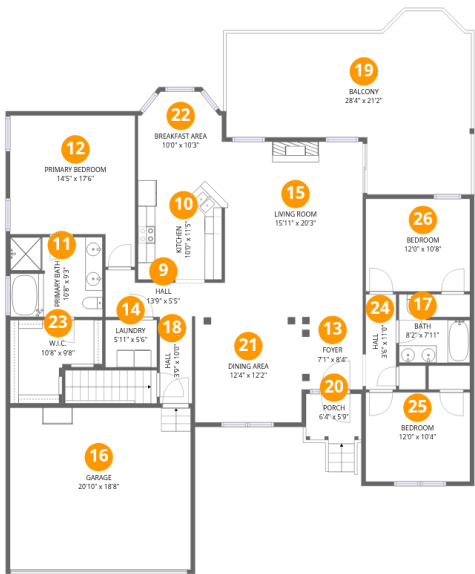
Room dimensions

Floor 1 Below grade Total:1463sqft Excluded: 896sqft

#		Dimensions	sqft	Counted as living area
1	Bonus Room	15'11" x 28'7"	430 sq. ft	Yes
2	Patio	25'1" x 8'10"	202 sq. ft	No
3	Recreation Room	24'6" x 33'3"	786 sq. ft	Yes
4	Bedroom	12'0" x 12'1"	142 sq. ft	Yes
5	Utility	18'10" x 6'3"	104 sq. ft	No
6	Covered Patio	28'4" x 18'6"	417 sq. ft	No
7	Bath	12'0" x 5'6"	59 sq. ft	Yes
8	Storage	12'0" x 14'4"	172 sq. ft	No

Home data report

225 Woods Edge Drive, Rocky Mount, Virginia 24151, United States



Room dimensions

Floor 2

Total:1739sqft Excluded: 872sqft

#		Dimensions	sqft	Counted as living area
9	Hall	13'9" x 5'5"	60 sq. ft	Yes
10	Kitchen	10'0" x 11'5"	112 sq. ft	Yes
11	Primary Bath	10'8" x 9'3"	97 sq. ft	Yes
12	Primary Bedroom	14'5" x 17'6"	211 sq. ft	Yes
13	Foyer	7'1" x 8'4"	59 sq. ft	Yes
14	Laundry	5'11" x 5'6"	33 sq. ft	Yes
15	Living Room	15'11" x 20'3"	323 sq. ft	Yes
16	Garage	20'10" x 18'8"	390 sq. ft	No
17	Bath	8'2" x 7'11"	50 sq. ft	Yes
18	Hall	3'9" x 10'0"	37 sq. ft	Yes
19	Balcony	28'4" x 21'2"	437 sq. ft	No

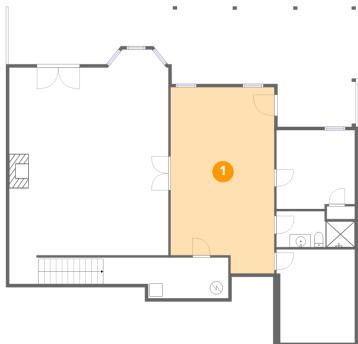
Home data report

225 Woods Edge Drive, Rocky Mount, Virginia 24151, United States

#		Dimensions	sqft	Counted as living area
20	Porch	6'4" x 5'9"	45 sq. ft	No
21	Dining Area	12'4" x 12'2"	150 sq. ft	Yes
22	Breakfast Area	10'0" x 10'3"	93 sq. ft	Yes
23	W.I.C.	10'8" x 9'8"	84 sq. ft	Yes
24	Hall	3'6" x 11'0"	39 sq. ft	Yes
25	Bedroom	12'0" x 10'4"	124 sq. ft	Yes
26	Bedroom	12'0" x 10'8"	129 sq. ft	Yes

225 Woods Edge Drive, Rocky Mount, Virginia 24151, United States

1 Floor 1 - Bonus Room



Dimensions: 15'11" x 28'7"
Area: 430 sq. ft
Counted as living area: Yes

Heated: Yes
Finished: Yes
Enclosed: Yes
Contiguous: Yes
Permitted: Yes
Wet space: No
Addition: No
Conversion: No

2 Floor 1 - Patio

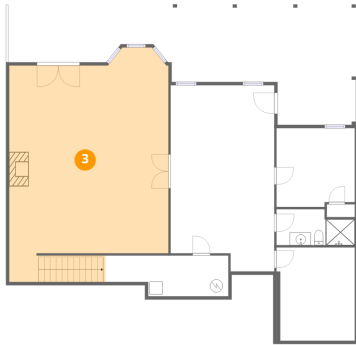


Dimensions: 25'1" x 8'10"
Area: 202 sq. ft
Counted as living area: No

Heated: No
Finished: No
Enclosed: No
Contiguous: Yes
Permitted: Yes
Wet space: No
Addition: No
Conversion: No

225 Woods Edge Drive, Rocky Mount, Virginia 24151, United States

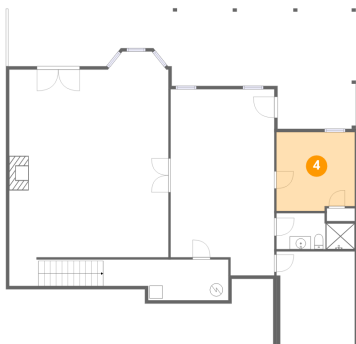
3 Floor 1 - Recreation Room



Dimensions: 24'6" x 33'3"
Area: 786 sq. ft
Counted as living area: Yes

Heated: Yes
Finished: Yes
Enclosed: Yes
Contiguous: Yes
Permitted: Yes
Wet space: No
Addition: No
Conversion: No

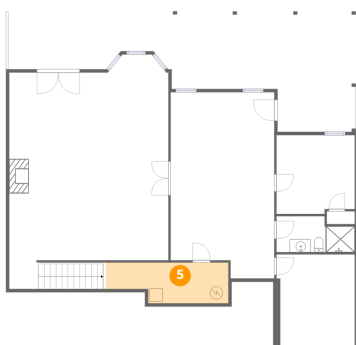
4 Floor 1 - Bedroom



Dimensions: 12'0" x 12'1"
Area: 142 sq. ft
Counted as living area: Yes

Heated: Yes
Finished: Yes
Enclosed: Yes
Contiguous: Yes
Permitted: Yes
Wet space: No
Addition: No
Conversion: No

5 Floor 1 - Utility

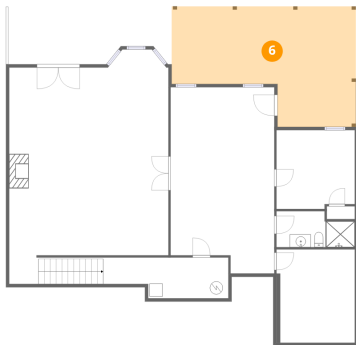


Dimensions: 18'10" x 6'3"
Area: 104 sq. ft
Counted as living area: No

Heated: Yes
Finished: No
Enclosed: Yes
Contiguous: Yes
Permitted: Yes
Wet space: No
Addition: No
Conversion: No

225 Woods Edge Drive, Rocky Mount, Virginia 24151, United States

6 Floor 1 - Covered Patio



Dimensions: 28'4" x 18'6"
Area: 417 sq. ft
Counted as living area: No

Heated: No
Finished: No
Enclosed: No
Contiguous: Yes
Permitted: Yes
Wet space: No
Addition: No
Conversion: No

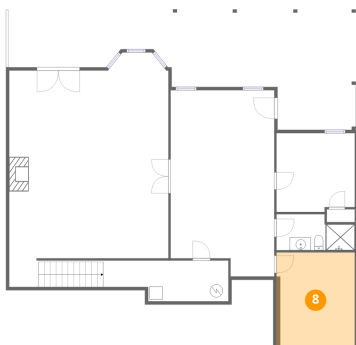
7 Floor 1 - Bath



Dimensions: 12'0" x 5'6"
Area: 59 sq. ft
Counted as living area: Yes

Heated: Yes
Finished: Yes
Enclosed: Yes
Contiguous: Yes
Permitted: Yes
Wet space: Yes
Addition: No
Conversion: No

8 Floor 1 - Storage

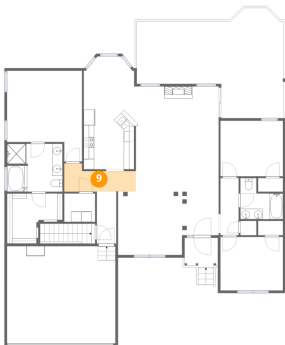


Dimensions: 12'0" x 14'4"
Area: 172 sq. ft
Counted as living area: No

Heated: No
Finished: No
Enclosed: No
Contiguous: No
Permitted: Yes
Wet space: No
Addition: No
Conversion: No

225 Woods Edge Drive, Rocky Mount, Virginia 24151, United States

9 Floor 2 - Hall



Dimensions: 13'9" x 5'5"
Area: 60 sq. ft
Counted as living area: Yes

Heated: Yes
Finished: Yes
Enclosed: Yes
Contiguous: Yes
Permitted: Yes
Wet space: No
Addition: No
Conversion: No

10 Floor 2 - Kitchen



Dimensions: 10'0" x 11'5"
Area: 112 sq. ft
Counted as living area: Yes

Heated: Yes
Finished: Yes
Enclosed: Yes
Contiguous: Yes
Permitted: Yes
Wet space: No
Addition: No
Conversion: No

11 Floor 2 - Primary Bath



Dimensions: 10'8" x 9'3"
Area: 97 sq. ft
Counted as living area: Yes

Heated: Yes
Finished: Yes
Enclosed: Yes
Contiguous: Yes
Permitted: Yes
Wet space: Yes
Addition: No
Conversion: No

12 Floor 2 - Primary Bedroom



Dimensions: 14'5" x 17'6"
Area: 211 sq. ft
Counted as living area: Yes

Heated: Yes
Finished: Yes
Enclosed: Yes
Contiguous: Yes
Permitted: Yes
Wet space: No
Addition: No
Conversion: No

13 Floor 2 - Foyer



Dimensions: 7'1" x 8'4"
Area: 59 sq. ft
Counted as living area: Yes

Heated: Yes
Finished: Yes
Enclosed: Yes
Contiguous: Yes
Permitted: Yes
Wet space: No
Addition: No
Conversion: No

14 Floor 2 - Laundry

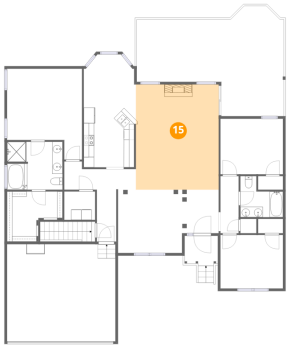


Dimensions: 5'11" x 5'6"
Area: 33 sq. ft
Counted as living area: Yes

Heated: Yes
Finished: Yes
Enclosed: Yes
Contiguous: Yes
Permitted: Yes
Wet space: No
Addition: No
Conversion: No

225 Woods Edge Drive, Rocky Mount, Virginia 24151, United States

15 Floor 2 - Living Room



Dimensions: 15'11" x 20'3"
Area: 323 sq. ft
Counted as living area: Yes

Heated: Yes
Finished: Yes
Enclosed: Yes
Contiguous: Yes
Permitted: Yes
Wet space: No
Addition: No
Conversion: No

16 Floor 2 - Garage



Dimensions: 20'10" x 18'8"
Area: 390 sq. ft
Counted as living area: No

Heated: No
Finished: No
Enclosed: Yes
Contiguous: Yes
Permitted: Yes
Wet space: No
Addition: No
Conversion: No

17 Floor 2 - Bath



Dimensions: 8'2" x 7'11"
Area: 50 sq. ft
Counted as living area: Yes

Heated: Yes
Finished: Yes
Enclosed: Yes
Contiguous: Yes
Permitted: Yes
Wet space: Yes
Addition: No
Conversion: No

18 Floor 2 - Hall



Dimensions: 3'9" x 10'0"
Area: 37 sq. ft
Counted as living area: Yes

Heated: Yes
Finished: Yes
Enclosed: Yes
Contiguous: Yes
Permitted: Yes
Wet space: No
Addition: No
Conversion: No

19 Floor 2 - Balcony



Dimensions: 28'4" x 21'2"
Area: 437 sq. ft
Counted as living area: No

Heated: No
Finished: No
Enclosed: No
Contiguous: Yes
Permitted: Yes
Wet space: No
Addition: No
Conversion: No

20 Floor 2 - Porch



Dimensions: 6'4" x 5'9"
Area: 45 sq. ft
Counted as living area: No

Heated: No
Finished: No
Enclosed: No
Contiguous: Yes
Permitted: Yes
Wet space: No
Addition: No
Conversion: No

21 Floor 2 - Dining Area



Dimensions: 12'4" x 12'2"
Area: 150 sq. ft
Counted as living area: Yes

Heated: Yes
Finished: Yes
Enclosed: Yes
Contiguous: Yes
Permitted: Yes
Wet space: No
Addition: No
Conversion: No

22 Floor 2 - Breakfast Area



Dimensions: 10'0" x 10'3"
Area: 93 sq. ft
Counted as living area: Yes

Heated: Yes
Finished: Yes
Enclosed: Yes
Contiguous: Yes
Permitted: Yes
Wet space: No
Addition: No
Conversion: No

23 Floor 2 - W.I.C.



Dimensions: 10'8" x 9'8"
Area: 84 sq. ft
Counted as living area: Yes

Heated: Yes
Finished: Yes
Enclosed: Yes
Contiguous: Yes
Permitted: Yes
Wet space: No
Addition: No
Conversion: No

24 Floor 2 - Hall



Dimensions: 3'6" x 11'0"
Area: 39 sq. ft
Counted as living area: Yes

Heated: Yes
Finished: Yes
Enclosed: Yes
Contiguous: Yes
Permitted: Yes
Wet space: No
Addition: No
Conversion: No

25 Floor 2 - Bedroom



Dimensions: 12'0" x 10'4"
Area: 124 sq. ft
Counted as living area: Yes

Heated: Yes
Finished: Yes
Enclosed: Yes
Contiguous: Yes
Permitted: Yes
Wet space: No
Addition: No
Conversion: No

26 Floor 2 - Bedroom



Dimensions: 12'0" x 10'8"
Area: 129 sq. ft
Counted as living area: Yes

Heated: Yes
Finished: Yes
Enclosed: Yes
Contiguous: Yes
Permitted: Yes
Wet space: No
Addition: No
Conversion: No