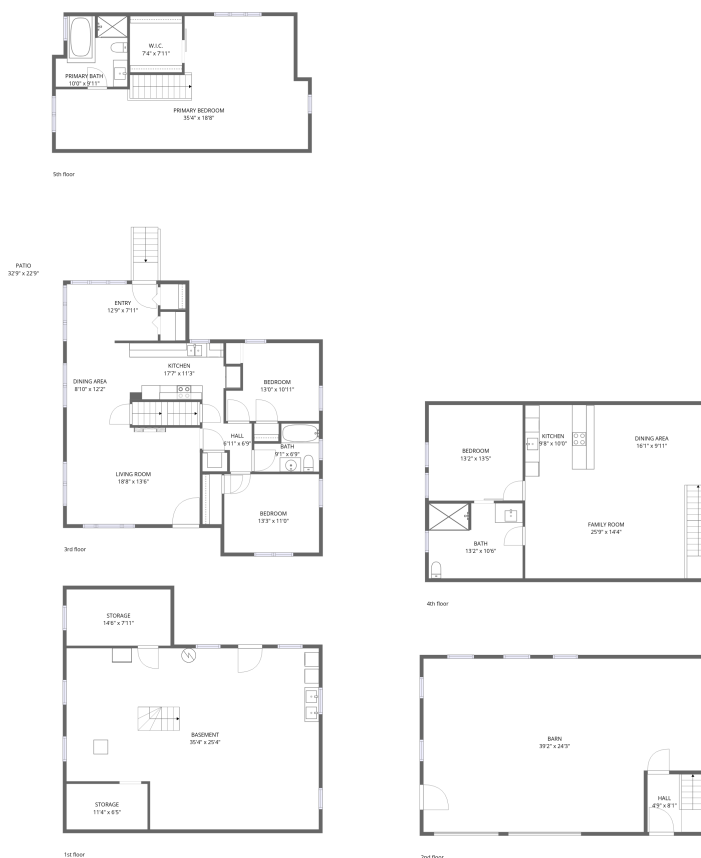


Home data report

1346 W Marquette Woods Rd, St Joseph, MI, US



Total Area: 2731 sq. ft

1st Floor: 0 sq. ft, 2nd Floor: 64 sq. ft, 3rd Floor: 1084 sq. ft, 4th Floor: 953 sq. ft, 5th Floor: 630 sq. ft

Excluded: Basement 827 sq. ft, Storage 188 sq. ft, Barn 880 sq. ft, Patio 576 sq. ft, Walls: 336 sq. ft

Property summary



5 Floors



4 Bedrooms



3 Bathrooms



1 Garages

Home data report

1346 W Marquette Woods Rd, St Joseph, MI, US



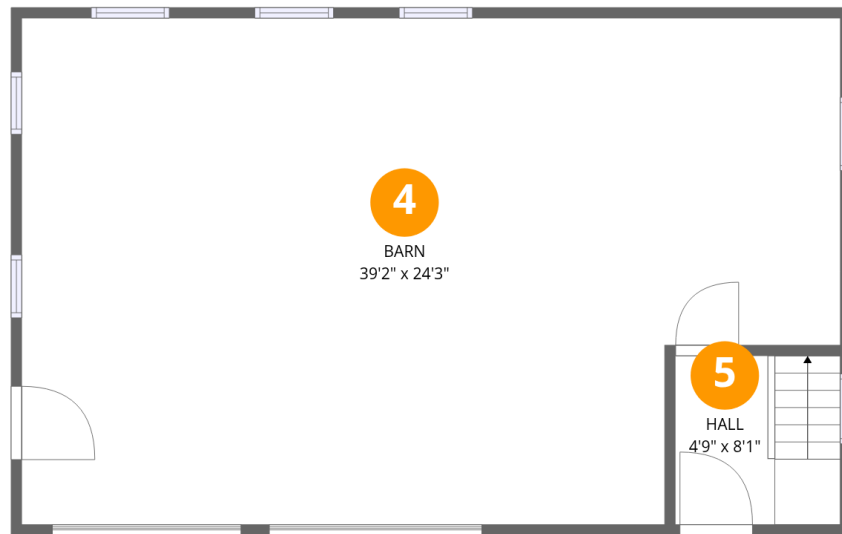
Room dimensions

Floor 1

Total: 0 sqft

Excluded: 1015 sqft

#		Dimensions	sqft	Counted as living area
1	Basement	35'4" x 25'4"	816 sq. ft	No
2	Storage	11'4" x 6'5"	73 sq. ft	No
3	Storage	14'6" x 7'11"	115 sq. ft	No



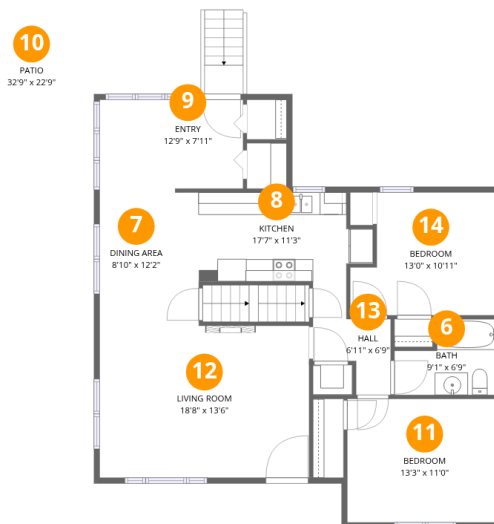
Room dimensions

Floor 2

Total: 64 sqft

Excluded: 880 sqft

#		Dimensions	sqft	Counted as living area
4	Barn	39'2" x 24'3"	880 sq. ft	No
5	Hall	4'9" x 8'1"	64 sq. ft	Yes



Room dimensions

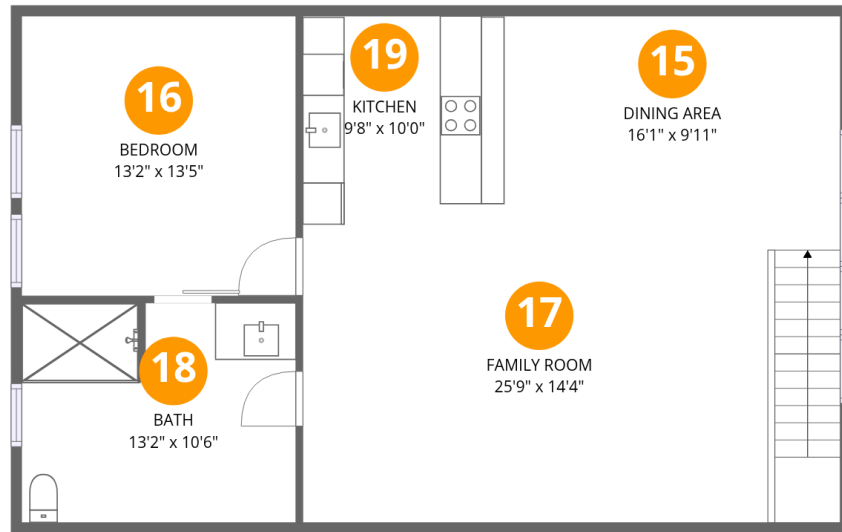
Floor 3

Total: 1084 sqft

Excluded: 576 sqft

#		Dimensions	sqft	Counted as living area
6	Bath	9'1" x 6'9"	51 sq. ft	Yes
7	Dining Area	8'10" x 12'2"	83 sq. ft	Yes
8	Kitchen	17'7" x 11'3"	145 sq. ft	Yes
9	Entry	12'9" x 7'11"	101 sq. ft	Yes
10	Patio	32'9" x 22'9"	576 sq. ft	No
11	Bedroom	13'3" x 11'0"	146 sq. ft	Yes
12	Living Room	18'8" x 13'6"	252 sq. ft	Yes
13	Hall	6'11" x 6'9"	35 sq. ft	Yes
14	Bedroom	13'0" x 10'11"	126 sq. ft	Yes

1346 W Marquette Woods Rd, St Joseph, MI, US

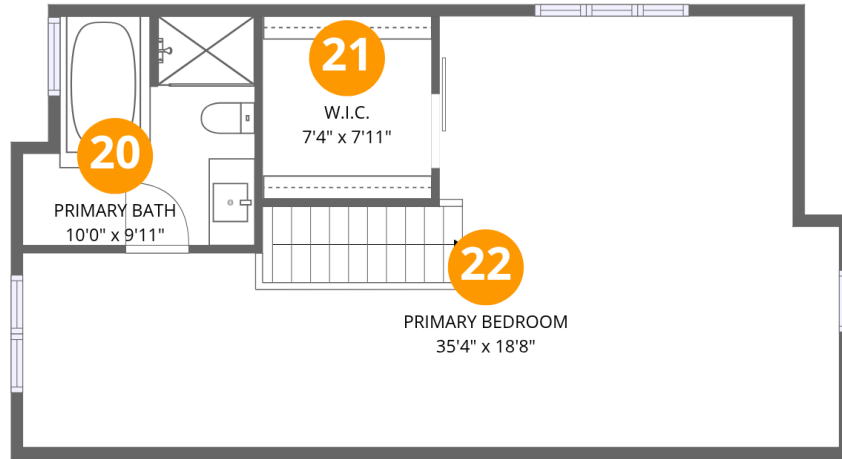


Room dimensions

Floor 4

Total: 953 sqft Excluded: 0 sqft

#		Dimensions	sqft	Counted as living area
15	Dining Area	16'1" x 9'11"	160 sq. ft	Yes
16	Bedroom	13'2" x 13'5"	176 sq. ft	Yes
17	Family Room	25'9" x 14'4"	369 sq. ft	Yes
18	Bath	13'2" x 10'6"	137 sq. ft	Yes
19	Kitchen	9'8" x 10'0"	96 sq. ft	Yes



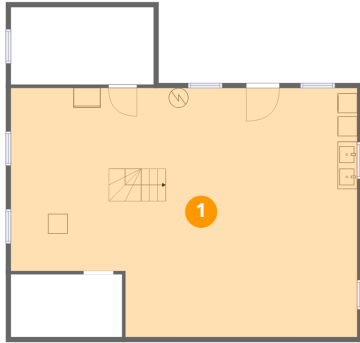
Room dimensions

Floor 5

Total: 630 sqft Excluded: 0 sqft

#		Dimensions	sqft	Counted as living area
20	Primary Bath	10'0" x 9'11"	89 sq. ft	Yes
21	W.I.C.	7'4" x 7'11"	58 sq. ft	Yes
22	Primary Bedroom	35'4" x 18'8"	470 sq. ft	Yes

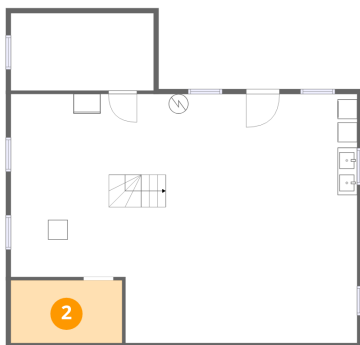
1 Floor 1 - Basement



Dimensions: 35'4" x 25'4"
Area: 816 sq. ft
Counted as living area: No

Heated: Yes
Finished: No
Enclosed: Yes
Contiguous: Yes
Permitted: Yes
Wet space: No
Addition: No
Conversion: No

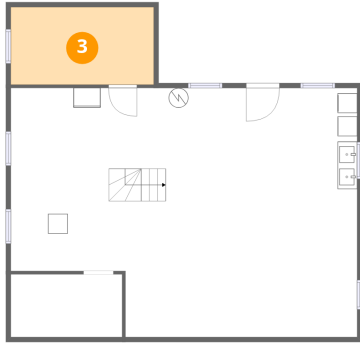
2 Floor 1 - Storage



Dimensions: 11'4" x 6'5"
Area: 73 sq. ft
Counted as living area: No

Heated: No
Finished: No
Enclosed: No
Contiguous: Yes
Permitted: Yes
Wet space: No
Addition: No
Conversion: No

3 Floor 1 - Storage



Dimensions: 14'6" x 7'11"
Area: 115 sq. ft
Counted as living area: No

Heated: No
Finished: No
Enclosed: No
Contiguous: Yes
Permitted: Yes
Wet space: No
Addition: No
Conversion: No

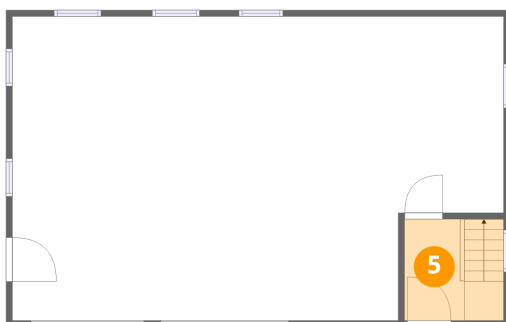
4 Floor 2 - Barn



Dimensions: 39'2" x 24'3"
Area: 880 sq. ft
Counted as living area: No

Heated: No
Finished: No
Enclosed: Yes
Contiguous: Yes
Permitted: Yes
Wet space: No
Addition: No
Conversion: No

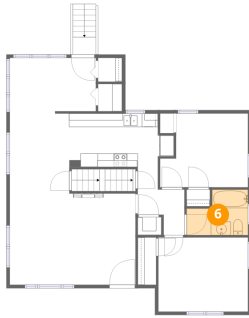
5 Floor 2 - Hall



Dimensions: 4'9" x 8'1"
Area: 64 sq. ft
Counted as living area: Yes

Heated: Yes
Finished: Yes
Enclosed: Yes
Contiguous: Yes
Permitted: Yes
Wet space: No
Addition: No
Conversion: No

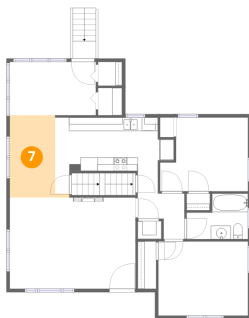
6 Floor 3 - Bath



Dimensions: 9'1" x 6'9"
Area: 51 sq. ft
Counted as living area: Yes

Heated: Yes
Finished: Yes
Enclosed: Yes
Contiguous: Yes
Permitted: Yes
Wet space: Yes
Addition: No
Conversion: No

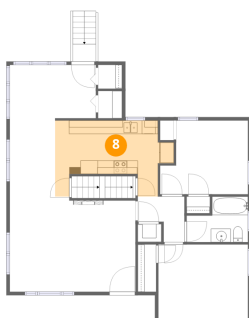
7 Floor 3 - Dining Area



Dimensions: 8'10" x 12'2"
Area: 83 sq. ft
Counted as living area: Yes

Heated: Yes
Finished: Yes
Enclosed: Yes
Contiguous: Yes
Permitted: Yes
Wet space: No
Addition: No
Conversion: No

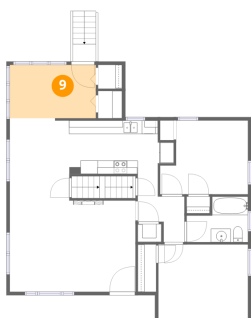
8 Floor 3 - Kitchen



Dimensions: 17'7" x 11'3"
Area: 145 sq. ft
Counted as living area: Yes

Heated: Yes
Finished: Yes
Enclosed: Yes
Contiguous: Yes
Permitted: Yes
Wet space: No
Addition: No
Conversion: No

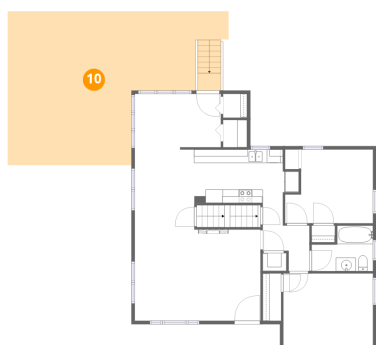
9 Floor 3 - Entry



Dimensions: 12'9" x 7'11"
Area: 101 sq. ft
Counted as living area: Yes

Heated: Yes
Finished: Yes
Enclosed: Yes
Contiguous: Yes
Permitted: Yes
Wet space: No
Addition: No
Conversion: No

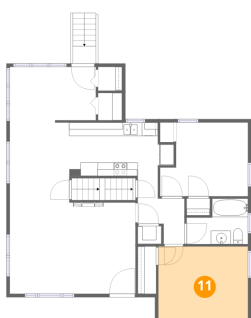
10 Floor 3 - Patio



Dimensions: 32'9" x 22'9"
Area: 576 sq. ft
Counted as living area: No

Heated: No
Finished: No
Enclosed: No
Contiguous: Yes
Permitted: Yes
Wet space: No
Addition: No
Conversion: No

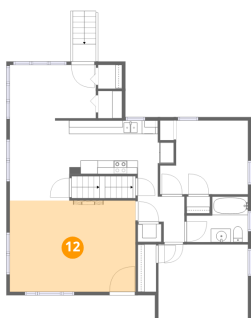
11 Floor 3 - Bedroom



Dimensions: 13'3" x 11'0"
Area: 146 sq. ft
Counted as living area: Yes

Heated: Yes
Finished: Yes
Enclosed: Yes
Contiguous: Yes
Permitted: Yes
Wet space: No
Addition: No
Conversion: No

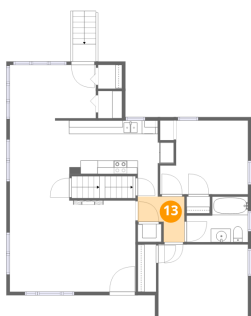
12 Floor 3 - Living Room



Dimensions: 18'8" x 13'6"
Area: 252 sq. ft
Counted as living area: Yes

Heated: Yes
Finished: Yes
Enclosed: Yes
Contiguous: Yes
Permitted: Yes
Wet space: No
Addition: No
Conversion: No

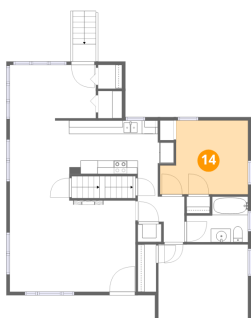
13 Floor 3 - Hall



Dimensions: 6'11" x 6'9"
Area: 35 sq. ft
Counted as living area: Yes

Heated: Yes
Finished: Yes
Enclosed: Yes
Contiguous: Yes
Permitted: Yes
Wet space: No
Addition: No
Conversion: No

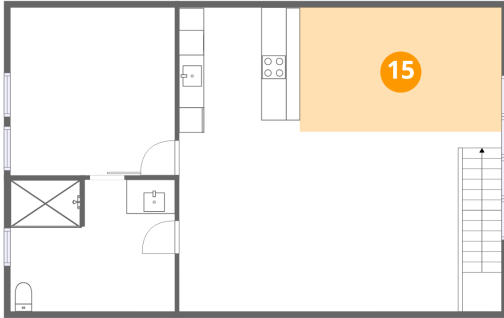
14 Floor 3 - Bedroom



Dimensions: 13'0" x 10'11"
Area: 126 sq. ft
Counted as living area: Yes

Heated: Yes
Finished: Yes
Enclosed: Yes
Contiguous: Yes
Permitted: Yes
Wet space: No
Addition: No
Conversion: No

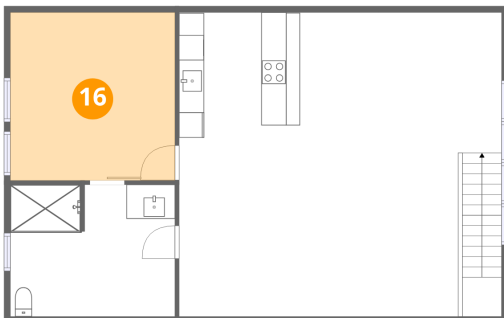
15 Floor 4 - Dining Area



Dimensions: 16'1" x 9'11"
Area: 160 sq. ft
Counted as living area: Yes

Heated: Yes
Finished: Yes
Enclosed: Yes
Contiguous: Yes
Permitted: Yes
Wet space: No
Addition: No
Conversion: No

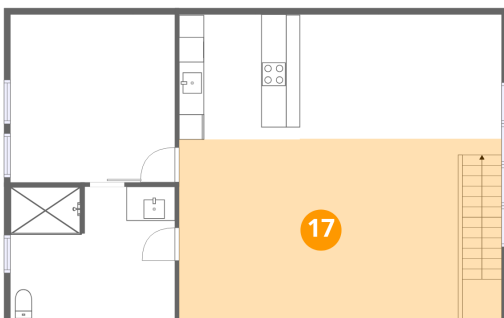
16 Floor 4 - Bedroom



Dimensions: 13'2" x 13'5"
Area: 176 sq. ft
Counted as living area: Yes

Heated: Yes
Finished: Yes
Enclosed: Yes
Contiguous: Yes
Permitted: Yes
Wet space: No
Addition: No
Conversion: No

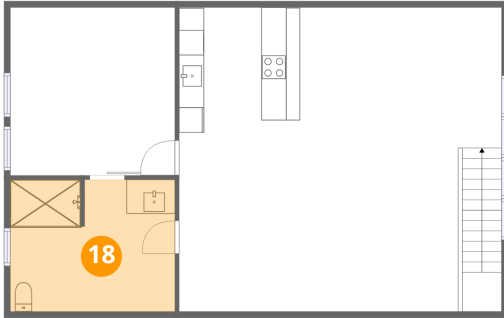
17 Floor 4 - Family Room



Dimensions: 25'9" x 14'4"
Area: 369 sq. ft
Counted as living area: Yes

Heated: Yes
Finished: Yes
Enclosed: Yes
Contiguous: Yes
Permitted: Yes
Wet space: No
Addition: No
Conversion: No

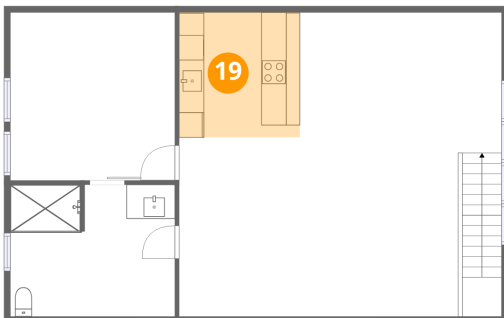
18 Floor 4 - Bath



Dimensions: 13'2" x 10'6"
Area: 137 sq. ft
Counted as living area: Yes

Heated: Yes
Finished: Yes
Enclosed: Yes
Contiguous: Yes
Permitted: Yes
Wet space: Yes
Addition: No
Conversion: No

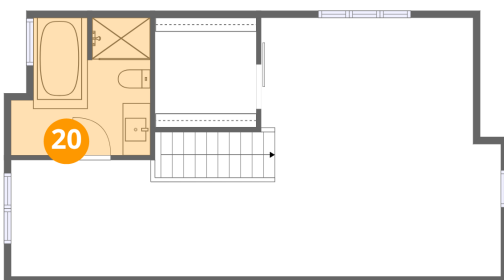
19 Floor 4 - Kitchen



Dimensions: 9'8" x 10'0"
Area: 96 sq. ft
Counted as living area: Yes

Heated: Yes
Finished: Yes
Enclosed: Yes
Contiguous: Yes
Permitted: Yes
Wet space: No
Addition: No
Conversion: No

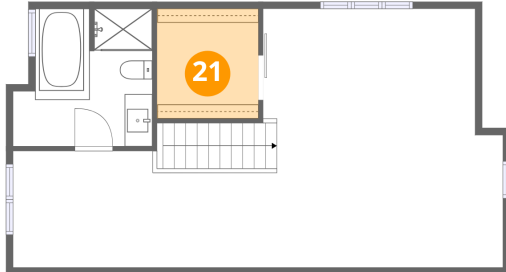
20 Floor 5 - Primary Bath



Dimensions: 10'0" x 9'11"
Area: 89 sq. ft
Counted as living area: Yes

Heated: Yes
Finished: Yes
Enclosed: Yes
Contiguous: Yes
Permitted: Yes
Wet space: Yes
Addition: No
Conversion: No

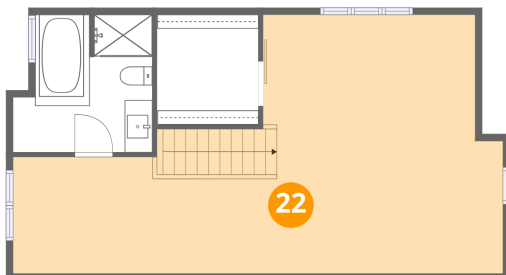
21 Floor 5 - W.I.C.



Dimensions: 7'4" x 7'11"
Area: 58 sq. ft
Counted as living area: Yes

Heated: Yes
Finished: Yes
Enclosed: Yes
Contiguous: Yes
Permitted: Yes
Wet space: No
Addition: No
Conversion: No

22 Floor 5 - Primary Bedroom



Dimensions: 35'4" x 18'8"
Area: 470 sq. ft
Counted as living area: Yes

Heated: Yes
Finished: Yes
Enclosed: Yes
Contiguous: Yes
Permitted: Yes
Wet space: No
Addition: No
Conversion: No