

Home report

4347 Griffins Gate Road, Grandover, Greensboro, Guilford County, North Carolina, United States, 27407




Total Area: 2959 sq. ft


Floor 1: 2121 sq. ft, Floor 2: 838 sq. ft

Excluded: Garage 643 sq. ft, Screened porch 266 sq. ft, Low ceiling 330 sq. ft, Attic 531 sq. ft, Walls: 279 sq. ft

Property summary

 **2** Floors

 **4** Bedrooms

 **3** Bathrooms

 **1** Garages

Home report

4347 Griffins Gate Road, Grandover, Greensboro, Guilford County, North Carolina, United States, 27407



Room dimensions

Floor 1 Total:2121sqft Excluded: 909sqft

#		Max Dimensions	sqft	Included
1	Laundry	6'11" x 12'10"	89 sq. ft	Yes
2	Foyer	6'3" x 10'11"	123 sq. ft	Yes
3	Living Room	20'0" x 21'2"	423 sq. ft	Yes
4	Kitchen	15'4" x 15'11"	244 sq. ft	Yes
5	W.I.C.	15'5" x 11'1"	155 sq. ft	Yes
6	Bath	4'11" x 8'7"	43 sq. ft	Yes
7	Dining Area	13'3" x 14'1"	186 sq. ft	Yes
8	Pantry	6'9" x 3'7"	24 sq. ft	Yes
9	Bedroom	12'6" x 12'10"	161 sq. ft	Yes
10	WC	3'7" x 4'11"	18 sq. ft	Yes
11	Garage	23'3" x 30'3"	643 sq. ft	No

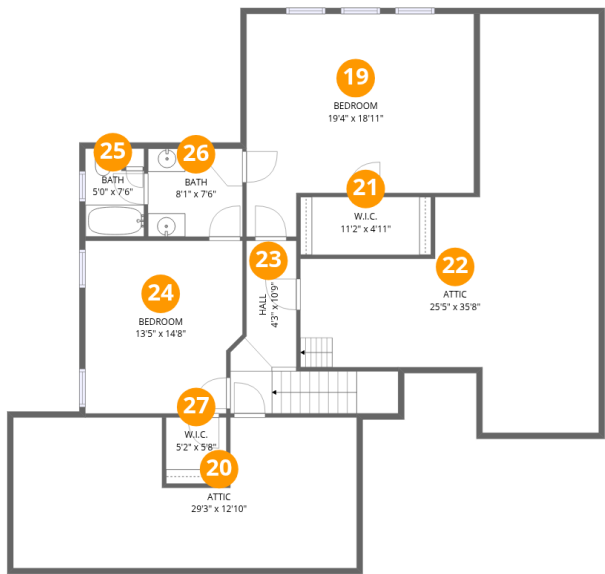
Home report

4347 Griffins Gate Road, Grandover, Greensboro, Guilford County, North Carolina, United States, 27407

#		Max Dimensions	sqft	Included
12	Primary Bedroom	15'5" x 20'9"	284 sq. ft	Yes
13	Hall	6'3" x 17'1"	74 sq. ft	Yes
14	Hall	4'11" x 3'10"	19 sq. ft	Yes
15	Hall	3'11" x 10'1"	39 sq. ft	Yes
16	W.I.C.	6'8" x 3'7"	24 sq. ft	Yes
17	Bath	11'2" x 13'2"	118 sq. ft	Yes
18	Screened Porch	19'4" x 13'9"	266 sq. ft	No

Home report

4347 Griffins Gate Road, Grandover, Greensboro, Guilford County, North Carolina, United States, 27407



Room dimensions

Floor 2 Total:838sqft Excluded: 861sqft

#		Max Dimensions	sqft	Included
19	Bedroom	19'4" x 18'11"	311 sq. ft	Yes
20	Attic	29'3" x 12'10"	149 sq. ft	No
21	W.I.C.	11'2" x 4'11"	55 sq. ft	Yes
22	Attic	25'5" x 35'8"	382 sq. ft	No
23	Hall	4'3" x 10'9"	102 sq. ft	Yes
24	Bedroom	13'5" x 14'8"	188 sq. ft	Yes
25	Bath	5'0" x 7'6"	34 sq. ft	Yes
26	Bath	8'1" x 7'6"	60 sq. ft	Yes
27	W.I.C.	5'2" x 5'8"	29 sq. ft	Yes

1 Floor 1 - Laundry



Max Dimensions: 6'11" x 12'10"
Calculated Area: 89 sq. ft
Included: Yes

Heated: Yes
Finished: Yes
Enclosed: Yes
Contiguous: Yes
Permitted: Yes
Wet space: No
Addition: No
Conversion: No

2 Floor 1 - Foyer



Max Dimensions: 6'3" x 10'11"
Calculated Area: 123 sq. ft
Included: Yes

Heated: Yes
Finished: Yes
Enclosed: Yes
Contiguous: Yes
Permitted: Yes
Wet space: No
Addition: No
Conversion: No

4347 Griffins Gate Road, Grandover, Greensboro, Guilford
County, North Carolina, United States, 27407

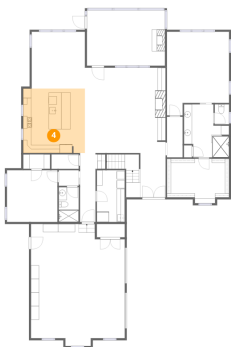
3 Floor 1 - Living Room



Max Dimensions: 20'0" x 21'2"
Calculated Area: 423 sq. ft
Included: Yes

Heated: Yes
Finished: Yes
Enclosed: Yes
Contiguous: Yes
Permitted: Yes
Wet space: No
Addition: No
Conversion: No

4 Floor 1 - Kitchen



Max Dimensions: 15'4" x 15'11"
Calculated Area: 244 sq. ft
Included: Yes

Heated: Yes
Finished: Yes
Enclosed: Yes
Contiguous: Yes
Permitted: Yes
Wet space: No
Addition: No
Conversion: No

5 Floor 1 - W.I.C.



Max Dimensions: 15'5" x 11'1"
Calculated Area: 155 sq. ft
Included: Yes

Heated: Yes
Finished: Yes
Enclosed: Yes
Contiguous: Yes
Permitted: Yes
Wet space: No
Addition: No
Conversion: No

4347 Griffins Gate Road, Grandover, Greensboro, Guilford
County, North Carolina, United States, 27407

6 Floor 1 - Bath



Max Dimensions: 4'11" x 8'7"
Calculated Area: 43 sq. ft
Included: Yes

Heated: Yes
Finished: Yes
Enclosed: Yes
Contiguous: Yes
Permitted: Yes
Wet space: Yes
Addition: No
Conversion: No

7 Floor 1 - Dining Area



Max Dimensions: 13'3" x 14'1"
Calculated Area: 186 sq. ft
Included: Yes

Heated: Yes
Finished: Yes
Enclosed: Yes
Contiguous: Yes
Permitted: Yes
Wet space: No
Addition: No
Conversion: No

8 Floor 1 - Pantry



Max Dimensions: 6'9" x 3'7"
Calculated Area: 24 sq. ft
Included: Yes

Heated: Yes
Finished: Yes
Enclosed: Yes
Contiguous: Yes
Permitted: Yes
Wet space: No
Addition: No
Conversion: No

9 Floor 1 - Bedroom



Max Dimensions: 12'6" x 12'10"
Calculated Area: 161 sq. ft
Included: Yes

Heated: Yes
Finished: Yes
Enclosed: Yes
Contiguous: Yes
Permitted: Yes
Wet space: No
Addition: No
Conversion: No

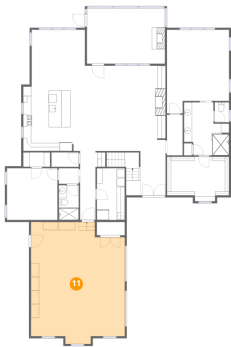
10 Floor 1 - WC



Max Dimensions: 3'7" x 4'11"
Calculated Area: 18 sq. ft
Included: Yes

Heated: Yes
Finished: Yes
Enclosed: Yes
Contiguous: Yes
Permitted: Yes
Wet space: Yes
Addition: No
Conversion: No

11 Floor 1 - Garage



Max Dimensions: 23'3" x 30'3"
Calculated Area: 643 sq. ft
Included: No

Heated: No
Finished: No
Enclosed: Yes
Contiguous: Yes
Permitted: Yes
Wet space: No
Addition: No
Conversion: No

4347 Griffins Gate Road, Grandover, Greensboro, Guilford
County, North Carolina, United States, 27407

12 Floor 1 - Primary Bedroom



Max Dimensions: 15'5" x 20'9"
Calculated Area: 284 sq. ft
Included: Yes

Heated: Yes
Finished: Yes
Enclosed: Yes
Contiguous: Yes
Permitted: Yes
Wet space: No
Addition: No
Conversion: No

13 Floor 1 - Hall



Max Dimensions: 6'3" x 17'1"
Calculated Area: 74 sq. ft
Included: Yes

Heated: Yes
Finished: Yes
Enclosed: Yes
Contiguous: Yes
Permitted: Yes
Wet space: No
Addition: No
Conversion: No

14 Floor 1 - Hall



Max Dimensions: 4'11" x 3'10"
Calculated Area: 19 sq. ft
Included: Yes

Heated: Yes
Finished: Yes
Enclosed: Yes
Contiguous: Yes
Permitted: Yes
Wet space: No
Addition: No
Conversion: No

4347 Griffins Gate Road, Grandover, Greensboro, Guilford
County, North Carolina, United States, 27407

15 Floor 1 - Hall



Max Dimensions: 3'11" x 10'1"
Calculated Area: 39 sq. ft
Included: Yes

Heated: Yes
Finished: Yes
Enclosed: Yes
Contiguous: Yes
Permitted: Yes
Wet space: No
Addition: No
Conversion: No

16 Floor 1 - W.I.C.



Max Dimensions: 6'8" x 3'7"
Calculated Area: 24 sq. ft
Included: Yes

Heated: Yes
Finished: Yes
Enclosed: Yes
Contiguous: Yes
Permitted: Yes
Wet space: No
Addition: No
Conversion: No

17 Floor 1 - Bath



Max Dimensions: 11'2" x 13'2"
Calculated Area: 118 sq. ft
Included: Yes

Heated: Yes
Finished: Yes
Enclosed: Yes
Contiguous: Yes
Permitted: Yes
Wet space: Yes
Addition: No
Conversion: No

4347 Griffins Gate Road, Grandover, Greensboro, Guilford
County, North Carolina, United States, 27407

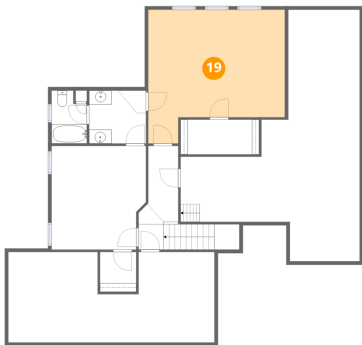
18 Floor 1 - Screened Porch



Max Dimensions: 19'4" x 13'9"
Calculated Area: 266 sq. ft
Included: No

Heated: No
Finished: No
Enclosed: No
Contiguous: Yes
Permitted: Yes
Wet space: No
Addition: No
Conversion: No

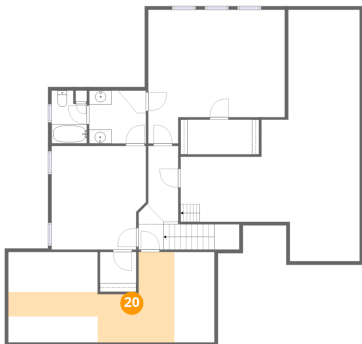
19 Floor 2 - Bedroom



Max Dimensions: 19'4" x 18'11"
Calculated Area: 311 sq. ft
Included: Yes

Heated: Yes
Finished: Yes
Enclosed: Yes
Contiguous: Yes
Permitted: Yes
Wet space: No
Addition: No
Conversion: No

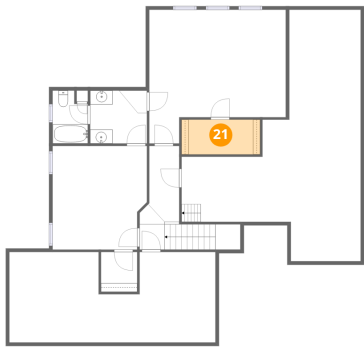
20 Floor 2 - Attic



Max Dimensions: 29'3" x 12'10"
Calculated Area: 149 sq. ft
Included: No

Heated: No
Finished: No
Enclosed: Yes
Contiguous: Yes
Permitted: Yes
Wet space: No
Addition: No
Conversion: No

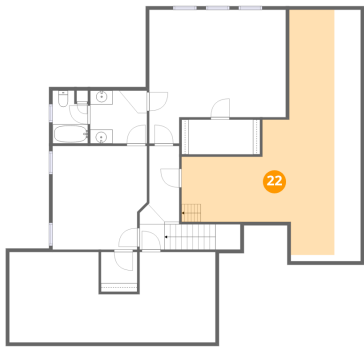
21 Floor 2 - W.I.C.



Max Dimensions: 11'2" x 4'11"
Calculated Area: 55 sq. ft
Included: Yes

Heated: Yes
Finished: Yes
Enclosed: Yes
Contiguous: Yes
Permitted: Yes
Wet space: No
Addition: No
Conversion: No

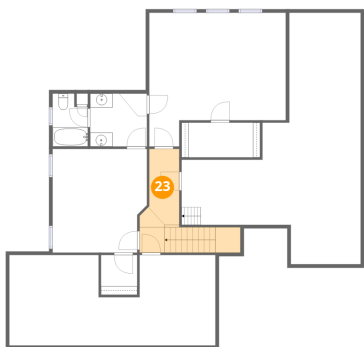
22 Floor 2 - Attic



Max Dimensions: 25'5" x 35'8"
Calculated Area: 382 sq. ft
Included: No

Heated: No
Finished: No
Enclosed: Yes
Contiguous: Yes
Permitted: Yes
Wet space: No
Addition: No
Conversion: No

23 Floor 2 - Hall

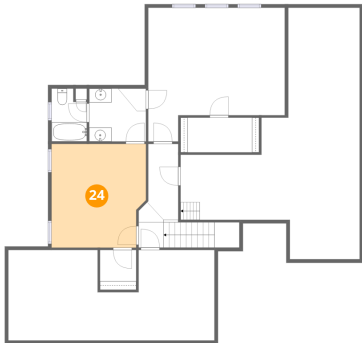


Max Dimensions: 4'3" x 10'9"
Calculated Area: 102 sq. ft
Included: Yes

Heated: Yes
Finished: Yes
Enclosed: Yes
Contiguous: Yes
Permitted: Yes
Wet space: No
Addition: No
Conversion: No

4347 Griffins Gate Road, Grandover, Greensboro, Guilford
County, North Carolina, United States, 27407

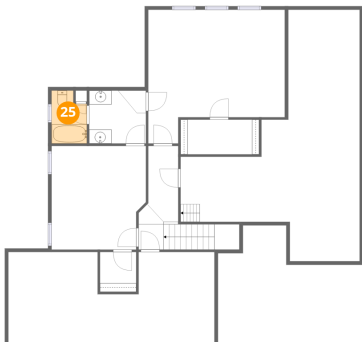
24 Floor 2 - Bedroom



Max Dimensions: 13'5" x 14'8"
Calculated Area: 188 sq. ft
Included: Yes

Heated: Yes
Finished: Yes
Enclosed: Yes
Contiguous: Yes
Permitted: Yes
Wet space: No
Addition: No
Conversion: No

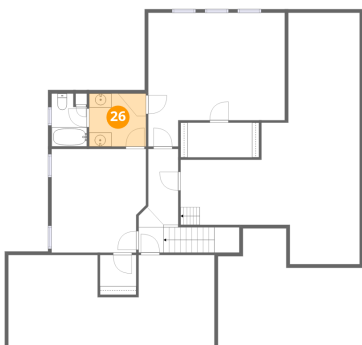
25 Floor 2 - Bath



Max Dimensions: 5'0" x 7'6"
Calculated Area: 34 sq. ft
Included: Yes

Heated: Yes
Finished: Yes
Enclosed: Yes
Contiguous: Yes
Permitted: Yes
Wet space: Yes
Addition: No
Conversion: No

26 Floor 2 - Bath

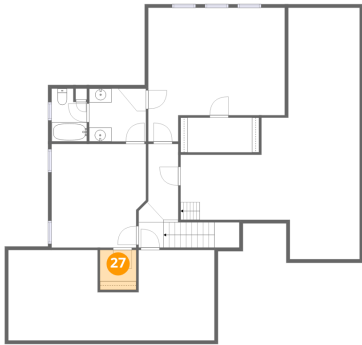


Max Dimensions: 8'1" x 7'6"
Calculated Area: 60 sq. ft
Included: Yes

Heated: Yes
Finished: Yes
Enclosed: Yes
Contiguous: Yes
Permitted: Yes
Wet space: Yes
Addition: No
Conversion: No

4347 Griffins Gate Road, Grandover, Greensboro, Guilford
County, North Carolina, United States, 27407

27 Floor 2 - W.I.C.



Max Dimensions: 5'2" x 5'8"
Calculated Area: 29 sq. ft
Included: Yes

Heated: Yes
Finished: Yes
Enclosed: Yes
Contiguous: Yes
Permitted: Yes
Wet space: No
Addition: No
Conversion: No