

# Home data report

## 1048 Lake Asbury Dr, Green Cove Springs, FL, US




**Total Area: 2014 sq. ft**

1st Floor: 1700 sq. ft, 2nd Floor: 314 sq. ft

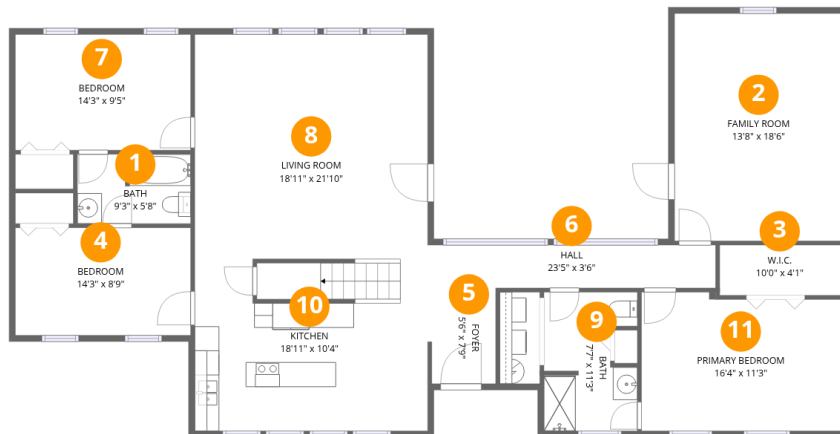
Excluded: Open to below 297 sq. ft, Walls: 176 sq. ft

### Property summary

 **2** Floors

 **3** Bedrooms

 **2** Bathrooms

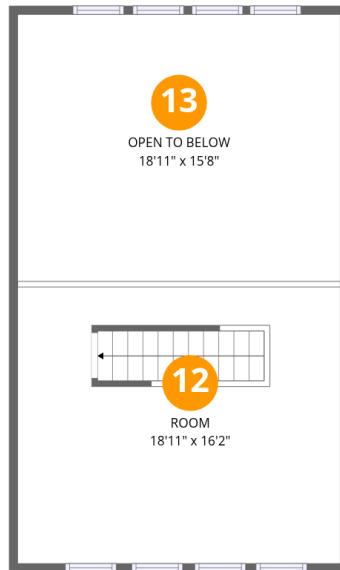


## Room dimensions

Floor 1

Total: 1700 sqft Excluded: 0 sqft

#		Dimensions	sqft	Counted as living area
1	Bath	9'3" x 5'8"	51 sq. ft	Yes
2	Family Room	13'8" x 18'6"	253 sq. ft	Yes
3	W.I.C.	10'0" x 4'1"	41 sq. ft	Yes
4	Bedroom	14'3" x 8'9"	125 sq. ft	Yes
5	Foyer	5'6" x 7'9"	42 sq. ft	Yes
6	Hall	23'5" x 3'6"	82 sq. ft	Yes
7	Bedroom	14'3" x 9'5"	134 sq. ft	Yes
8	Living Room	18'11" x 21'10"	414 sq. ft	Yes
9	Bath	7'7" x 11'3"	77 sq. ft	Yes
10	Kitchen	18'11" x 10'4"	197 sq. ft	Yes
11	Primary Bedroom	16'4" x 11'3"	179 sq. ft	Yes



## Room dimensions

Floor 2

Total: 314 sqft

Excluded: 297 sqft

#		Dimensions	sqft	Counted as living area
12	Room	18'11" x 16'2"	314 sq. ft	Yes
13	Open To Below	18'11" x 15'8"	297 sq. ft	No

## 1 Floor 1 - Bath



Dimensions: 9'3" x 5'8"  
Area: 51 sq. ft  
Counted as living area: Yes

Heated: Yes  
Finished: Yes  
Enclosed: Yes  
Contiguous: Yes  
Permitted: Yes  
Wet space: Yes  
Addition: No  
Conversion: No

## 2 Floor 1 - Family Room



Dimensions: 13'8" x 18'6"  
Area: 253 sq. ft  
Counted as living area: Yes

Heated: Yes  
Finished: Yes  
Enclosed: Yes  
Contiguous: Yes  
Permitted: Yes  
Wet space: No  
Addition: No  
Conversion: No

### 3 Floor 1 - W.I.C.



Dimensions: 10'0" x 4'1"  
Area: 41 sq. ft  
Counted as living area: Yes

Heated: Yes  
Finished: Yes  
Enclosed: Yes  
Contiguous: Yes  
Permitted: Yes  
Wet space: No  
Addition: No  
Conversion: No

### 4 Floor 1 - Bedroom



Dimensions: 14'3" x 8'9"  
Area: 125 sq. ft  
Counted as living area: Yes

Heated: Yes  
Finished: Yes  
Enclosed: Yes  
Contiguous: Yes  
Permitted: Yes  
Wet space: No  
Addition: No  
Conversion: No

### 5 Floor 1 - Foyer



Dimensions: 5'6" x 7'9"  
Area: 42 sq. ft  
Counted as living area: Yes

Heated: Yes  
Finished: Yes  
Enclosed: Yes  
Contiguous: Yes  
Permitted: Yes  
Wet space: No  
Addition: No  
Conversion: No

## 6 Floor 1 - Hall



Dimensions: 23'5" x 3'6"  
Area: 82 sq. ft  
Counted as living area: Yes

Heated: Yes  
Finished: Yes  
Enclosed: Yes  
Contiguous: Yes  
Permitted: Yes  
Wet space: No  
Addition: No  
Conversion: No

## 7 Floor 1 - Bedroom



Dimensions: 14'3" x 9'5"  
Area: 134 sq. ft  
Counted as living area: Yes

Heated: Yes  
Finished: Yes  
Enclosed: Yes  
Contiguous: Yes  
Permitted: Yes  
Wet space: No  
Addition: No  
Conversion: No

## 8 Floor 1 - Living Room



Dimensions: 18'11" x 21'10"  
Area: 414 sq. ft  
Counted as living area: Yes

Heated: Yes  
Finished: Yes  
Enclosed: Yes  
Contiguous: Yes  
Permitted: Yes  
Wet space: No  
Addition: No  
Conversion: No

**9** Floor 1 - Bath



Dimensions: 7'7" x 11'3"  
Area: 77 sq. ft  
Counted as living area: Yes

Heated: Yes  
Finished: Yes  
Enclosed: Yes  
Contiguous: Yes  
Permitted: Yes  
Wet space: Yes  
Addition: No  
Conversion: No

**10** Floor 1 - Kitchen



Dimensions: 18'11" x 10'4"  
Area: 197 sq. ft  
Counted as living area: Yes

Heated: Yes  
Finished: Yes  
Enclosed: Yes  
Contiguous: Yes  
Permitted: Yes  
Wet space: No  
Addition: No  
Conversion: No

**11** Floor 1 - Primary Bedroom

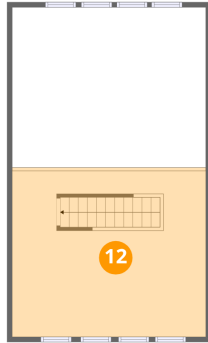


Dimensions: 16'4" x 11'3"  
Area: 179 sq. ft  
Counted as living area: Yes

Heated: Yes  
Finished: Yes  
Enclosed: Yes  
Contiguous: Yes  
Permitted: Yes  
Wet space: No  
Addition: No  
Conversion: No

**12** Floor 2 - Room

---

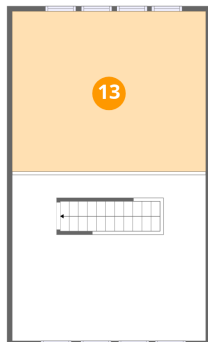


Dimensions: 18'11" x 16'2"  
Area: 314 sq. ft  
Counted as living area: No

Heated: Yes  
Finished: Yes  
Enclosed: Yes  
Contiguous: No  
Permitted: Yes  
Wet space: No  
Addition: No  
Conversion: No

**13** Floor 2 - Open To Below

---



Dimensions: 18'11" x 15'8"  
Area: 297 sq. ft  
Counted as living area: No

Heated: No  
Finished: No  
Enclosed: No  
Contiguous: Yes  
Permitted: No  
Wet space: No  
Addition: No  
Conversion: No