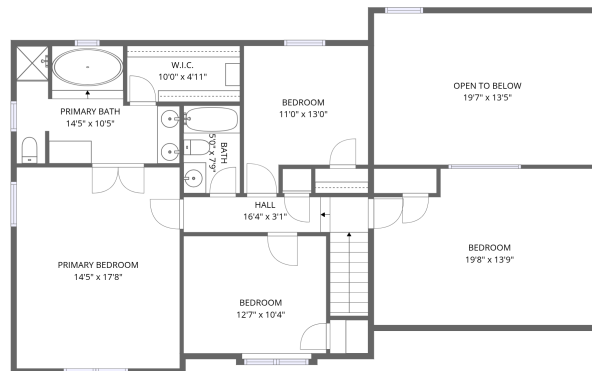
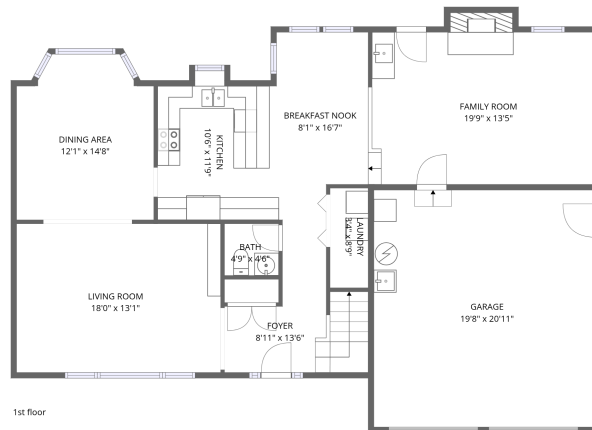


# 112 Bellows Pl, Yorktown, VA, US



2nd floor



1st floor

**Total Area: 2275 sq. ft**

1st Floor: 1118 sq. ft, 2nd Floor: 1157 sq. ft

Excluded: Garage 411 sq. ft, Embedded window 5 sq. ft, Fireplace 11 sq. ft, Open to below 263 sq. ft, Walls: 187 sq. ft

## Property summary



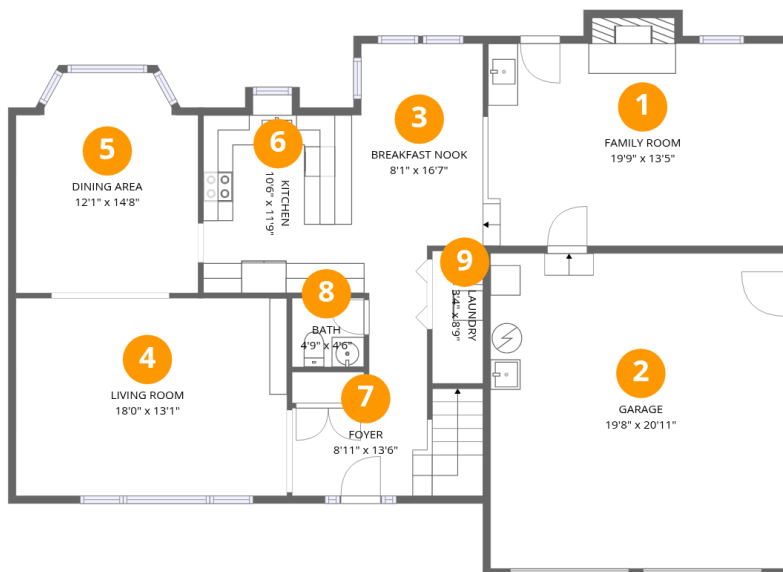
Home data report

# 112 Bellows Pl, Yorktown, VA, US

 **1**  
Half baths

 **1**  
Garages

# 112 Bellows Pl, Yorktown, VA, US



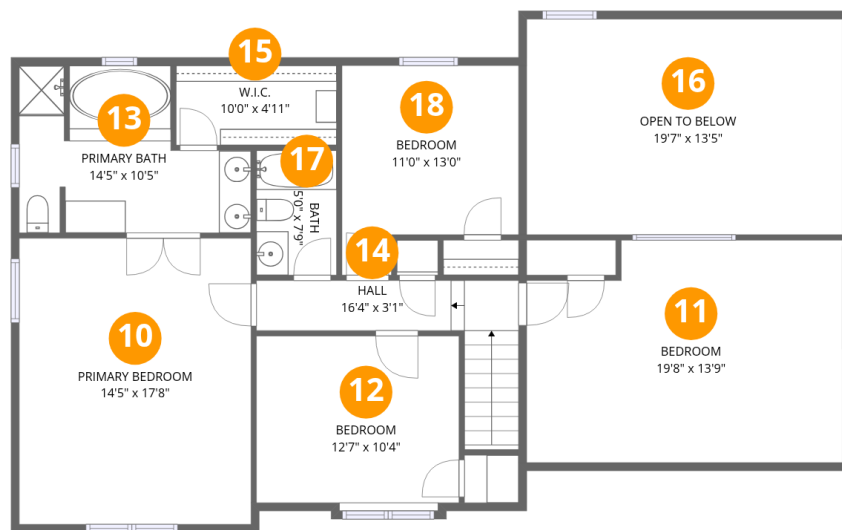
## Room dimensions

Floor 1

Total: 1118 sqft Excluded: 427 sqft

#		Dimensions	sqft	Counted as living area
1	Family Room	19'9" x 13'5"	279 sq. ft	Yes
2	Garage	19'8" x 20'11"	411 sq. ft	No
3	Breakfast Nook	8'1" x 16'7"	123 sq. ft	Yes
4	Living Room	18'0" x 13'1"	237 sq. ft	Yes
5	Dining Area	12'1" x 14'8"	164 sq. ft	Yes
6	Kitchen	10'6" x 11'9"	124 sq. ft	Yes
7	Foyer	8'11" x 13'6"	108 sq. ft	Yes
8	Bath	4'9" x 4'6"	22 sq. ft	Yes
9	Laundry	3'4" x 8'9"	30 sq. ft	Yes

# 112 Bellows Pl, Yorktown, VA, US



## Room dimensions

Floor 2

Total: 1157 sqft

Excluded: 263 sqft

#		Dimensions	sqft	Counted as living area
10	Primary Bedroom	14'5" x 17'8"	256 sq. ft	Yes
11	Bedroom	19'8" x 13'9"	257 sq. ft	Yes
12	Bedroom	12'7" x 10'4"	134 sq. ft	Yes
13	Primary Bath	14'5" x 10'5"	121 sq. ft	Yes
14	Hall	16'4" x 3'1"	76 sq. ft	Yes
15	W.I.C.	10'0" x 4'11"	49 sq. ft	Yes
16	Open To Below	19'7" x 13'5"	263 sq. ft	No
17	Bath	5'0" x 7'9"	39 sq. ft	Yes
18	Bedroom	11'0" x 13'0"	123 sq. ft	Yes

## 1 Floor 1 - Family Room



Dimensions: 19'9" x 13'5"  
Area: 279 sq. ft  
Counted as living area: Yes

Heated: Yes  
Finished: Yes  
Enclosed: Yes  
Contiguous: Yes  
Permitted: Yes  
Wet space: No  
Addition: No  
Conversion: No

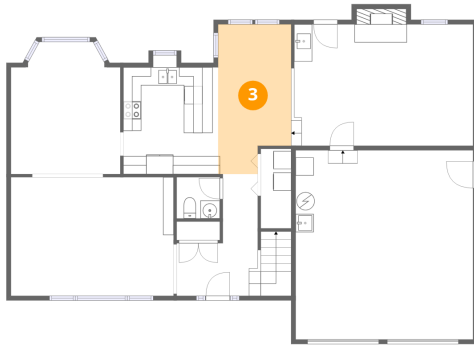
## 2 Floor 1 - Garage



Dimensions: 19'8" x 20'11"  
Area: 411 sq. ft  
Counted as living area: No

Heated: No  
Finished: No  
Enclosed: Yes  
Contiguous: Yes  
Permitted: Yes  
Wet space: No  
Addition: No  
Conversion: No

### 3 Floor 1 - Breakfast Nook



Dimensions: 8'1" x 16'7"  
Area: 123 sq. ft  
Counted as living area: Yes

Heated: Yes  
Finished: Yes  
Enclosed: Yes  
Contiguous: Yes  
Permitted: Yes  
Wet space: No  
Addition: No  
Conversion: No

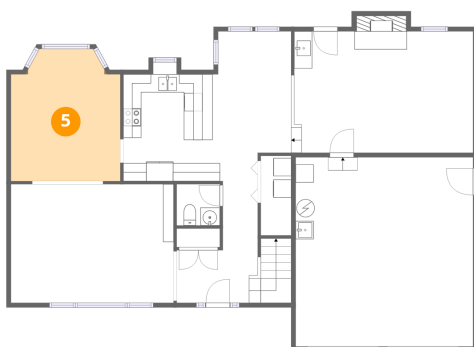
### 4 Floor 1 - Living Room



Dimensions: 18'0" x 13'1"  
Area: 237 sq. ft  
Counted as living area: Yes

Heated: Yes  
Finished: Yes  
Enclosed: Yes  
Contiguous: Yes  
Permitted: Yes  
Wet space: No  
Addition: No  
Conversion: No

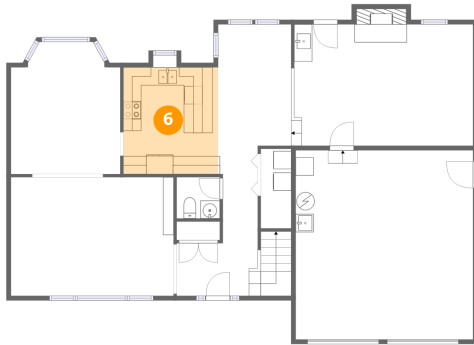
### 5 Floor 1 - Dining Area



Dimensions: 12'1" x 14'8"  
Area: 164 sq. ft  
Counted as living area: Yes

Heated: Yes  
Finished: Yes  
Enclosed: Yes  
Contiguous: Yes  
Permitted: Yes  
Wet space: No  
Addition: No  
Conversion: No

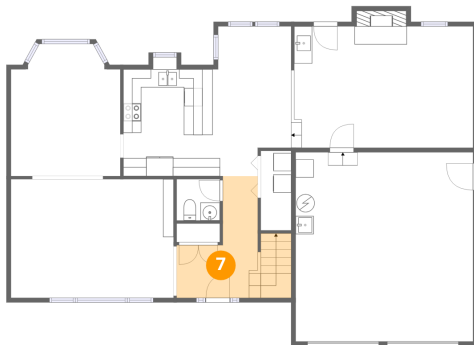
## 6 Floor 1 - Kitchen



Dimensions: 10'6" x 11'9"  
Area: 124 sq. ft  
Counted as living area: Yes

Heated: Yes  
Finished: Yes  
Enclosed: Yes  
Contiguous: Yes  
Permitted: Yes  
Wet space: No  
Addition: No  
Conversion: No

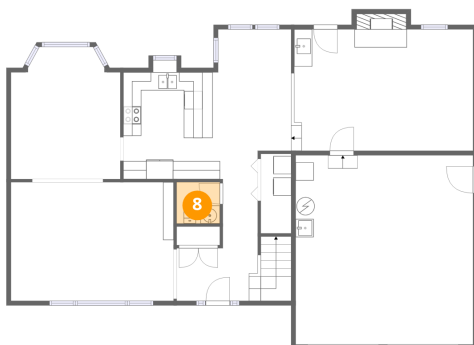
## 7 Floor 1 - Foyer



Dimensions: 8'11" x 13'6"  
Area: 108 sq. ft  
Counted as living area: Yes

Heated: Yes  
Finished: Yes  
Enclosed: Yes  
Contiguous: Yes  
Permitted: Yes  
Wet space: No  
Addition: No  
Conversion: No

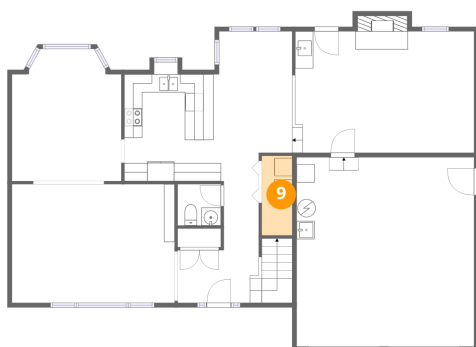
## 8 Floor 1 - Bath



Dimensions: 4'9" x 4'6"  
Area: 22 sq. ft  
Counted as living area: Yes

Heated: Yes  
Finished: Yes  
Enclosed: Yes  
Contiguous: Yes  
Permitted: Yes  
Wet space: Yes  
Addition: No  
Conversion: No

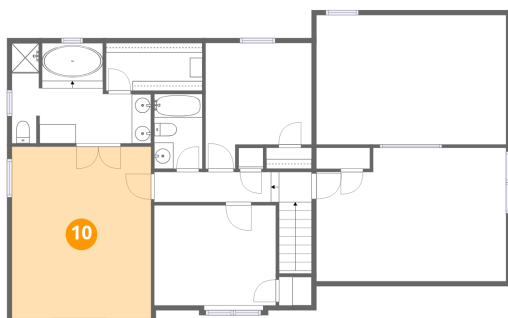
**9** Floor 1 - Laundry



Dimensions: 3'4" x 8'9"  
Area: 30 sq. ft  
Counted as living area: Yes

Heated: Yes  
Finished: Yes  
Enclosed: Yes  
Contiguous: Yes  
Permitted: Yes  
Wet space: No  
Addition: No  
Conversion: No

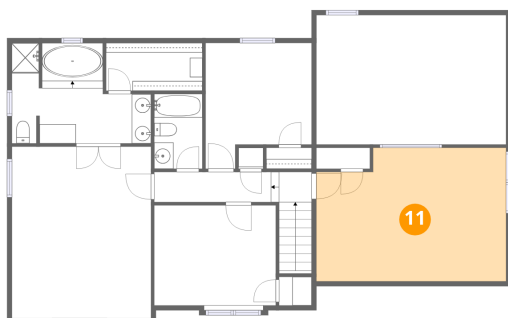
**10** Floor 2 - Primary Bedroom



Dimensions: 14'5" x 17'8"  
Area: 256 sq. ft  
Counted as living area: Yes

Heated: Yes  
Finished: Yes  
Enclosed: Yes  
Contiguous: Yes  
Permitted: Yes  
Wet space: No  
Addition: No  
Conversion: No

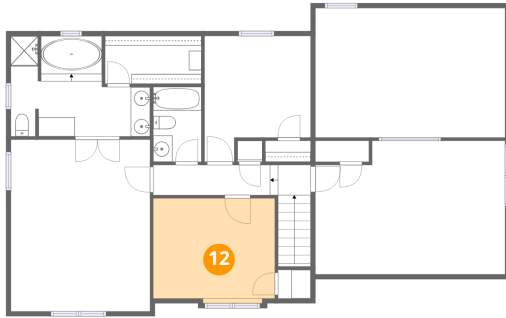
**11** Floor 2 - Bedroom



Dimensions: 19'8" x 13'9"  
Area: 257 sq. ft  
Counted as living area: Yes

Heated: Yes  
Finished: Yes  
Enclosed: Yes  
Contiguous: Yes  
Permitted: Yes  
Wet space: No  
Addition: No  
Conversion: No

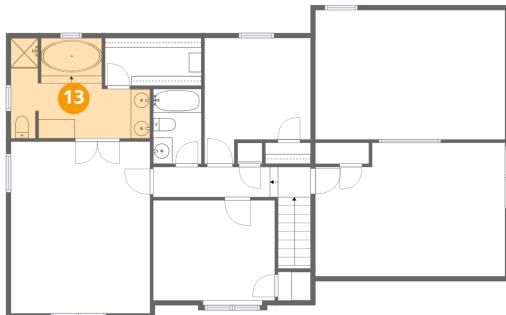
## 12 Floor 2 - Bedroom



Dimensions: 12'7" x 10'4"  
Area: 134 sq. ft  
Counted as living area: Yes

Heated: Yes  
Finished: Yes  
Enclosed: Yes  
Contiguous: Yes  
Permitted: Yes  
Wet space: No  
Addition: No  
Conversion: No

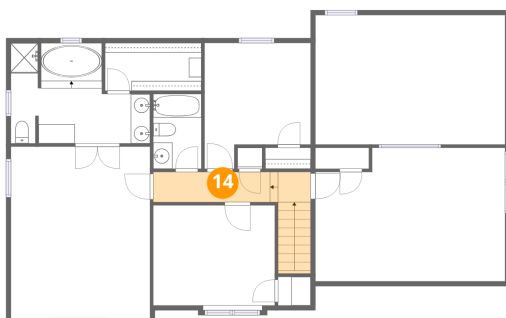
## 13 Floor 2 - Primary Bath



Dimensions: 14'5" x 10'5"  
Area: 121 sq. ft  
Counted as living area: Yes

Heated: Yes  
Finished: Yes  
Enclosed: Yes  
Contiguous: Yes  
Permitted: Yes  
Wet space: Yes  
Addition: No  
Conversion: No

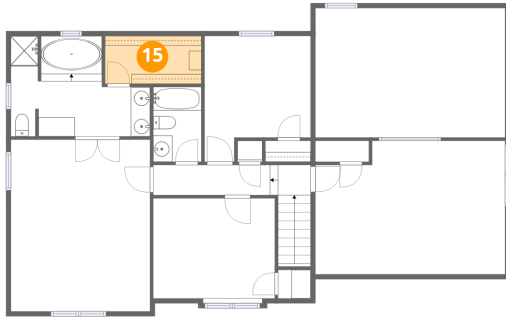
## 14 Floor 2 - Hall



Dimensions: 16'4" x 3'1"  
Area: 76 sq. ft  
Counted as living area: Yes

Heated: Yes  
Finished: Yes  
Enclosed: Yes  
Contiguous: Yes  
Permitted: Yes  
Wet space: No  
Addition: No  
Conversion: No

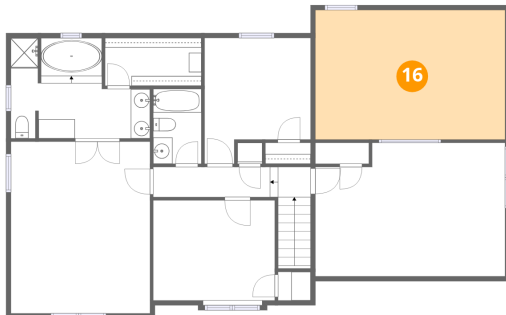
**15** Floor 2 - W.I.C.



Dimensions: 10'0" x 4'11"  
Area: 49 sq. ft  
Counted as living area: Yes

Heated: Yes  
Finished: Yes  
Enclosed: Yes  
Contiguous: Yes  
Permitted: Yes  
Wet space: No  
Addition: No  
Conversion: No

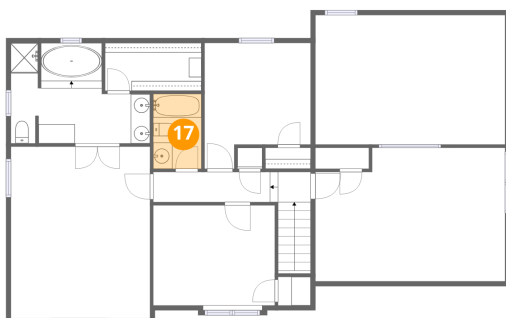
**16** Floor 2 - Open To Below



Dimensions: 19'7" x 13'5"  
Area: 263 sq. ft  
Counted as living area: No

Heated: No  
Finished: No  
Enclosed: No  
Contiguous: Yes  
Permitted: No  
Wet space: No  
Addition: No  
Conversion: No

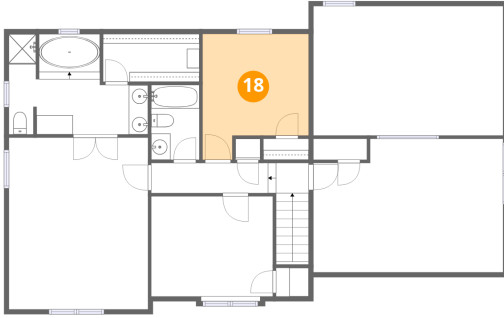
**17** Floor 2 - Bath



Dimensions: 5'0" x 7'9"  
Area: 39 sq. ft  
Counted as living area: Yes

Heated: Yes  
Finished: Yes  
Enclosed: Yes  
Contiguous: Yes  
Permitted: Yes  
Wet space: Yes  
Addition: No  
Conversion: No

**18** Floor 2 - Bedroom



Dimensions: 11'0" x 13'0"  
Area: 123 sq. ft  
Counted as living area: Yes

Heated: Yes  
Finished: Yes  
Enclosed: Yes  
Contiguous: Yes  
Permitted: Yes  
Wet space: No  
Addition: No  
Conversion: No