

## Home data report

**5245 Carriage Drive, Sugar Loaf Estates, Cave Spring, Roanoke, Roanoke County, Virginia, United States, 24018**



**Total Area: 2283 sq. ft**

Basement: 759 sq. ft, 1st Floor: 1524 sq. ft

Excluded: Bedroom 354 sq. ft, Utility 245 sq. ft, Undefined 27 sq. ft, Storage 80 sq. ft, Fireplace 32 sq. ft, Garage 513 sq. ft, Screened porch 232 sq. ft, Porch 111 sq. ft, Patio 365 sq. ft, Walls: 227 sq. ft

## Property summary



**2**  
Floors



**5**  
Bedrooms



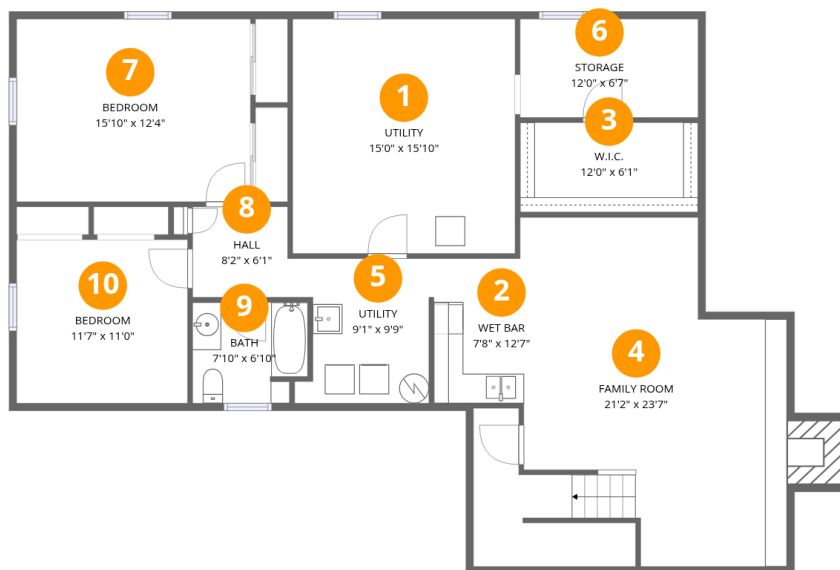
**3**  
Bathrooms



**1**  
Garages

Home data report

5245 Carriage Drive, Sugar Loaf Estates, Cave Spring, Roanoke, Roanoke County, Virginia, United States, 24018



## Room dimensions

Floor 1 Below grade

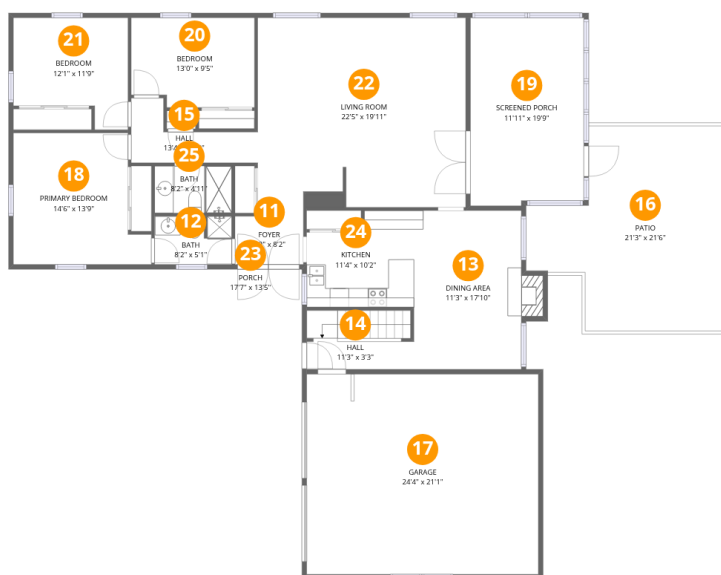
Total:759sqft

Excluded: 726sqft

#		Dimensions	sqft	Counted as living area
1	Utility	15'0" x 15'10"	238 sq. ft	No
2	Wet Bar	7'8" x 12'7"	96 sq. ft	Yes
3	W.I.C.	12'0" x 6'1"	73 sq. ft	Yes
4	Family Room	21'2" x 23'7"	500 sq. ft	Yes
5	Utility	9'1" x 9'9"	88 sq. ft	Yes
6	Storage	12'0" x 6'7"	79 sq. ft	No
7	Bedroom	15'10" x 12'4"	195 sq. ft	No
8	Hall	8'2" x 6'1"	50 sq. ft	Yes
9	Bath	7'10" x 6'10"	53 sq. ft	Yes
10	Bedroom	11'7" x 11'0"	127 sq. ft	No

## Home data report

5245 Carriage Drive, Sugar Loaf Estates, Cave Spring, Roanoke, Roanoke County, Virginia, United States, 24018



## Room dimensions

Floor 2

Total:1524sqft

Excluded: 1233sqft

#		Dimensions	sqft	Counted as living area
11	Foyer	7'2" x 8'2"	59 sq. ft	Yes
12	Bath	8'2" x 5'1"	41 sq. ft	Yes
13	Dining Area	11'3" x 17'10"	201 sq. ft	Yes
14	Hall	11'3" x 3'3"	37 sq. ft	Yes
15	Hall	13'4" x 6'10"	91 sq. ft	Yes
16	Patio	21'3" x 21'6"	458 sq. ft	No
17	Garage	24'4" x 21'1"	513 sq. ft	No
18	Primary Bedroom	14'6" x 13'9"	200 sq. ft	Yes
19	Screened Porch	11'11" x 19'9"	236 sq. ft	No
20	Bedroom	13'0" x 9'5"	122 sq. ft	Yes
21	Bedroom	12'1" x 11'9"	142 sq. ft	Yes

Home data report

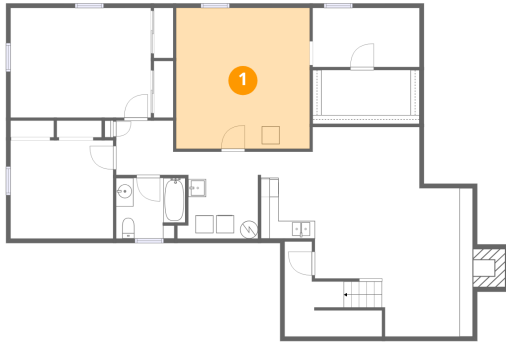
**5245 Carriage Drive, Sugar Loaf Estates, Cave Spring, Roanoke, Roanoke County, Virginia, United States, 24018**

#		Dimensions	sqft	Counted as living area
22	Living Room	22'5" x 19'11"	446 sq. ft	Yes
23	Porch	17'7" x 13'5"	236 sq. ft	No
24	Kitchen	11'4" x 10'2"	114 sq. ft	Yes
25	Bath	8'2" x 4'11"	40 sq. ft	Yes

5245 Carriage Drive, Sugar Loaf Estates, Cave Spring, Roanoke,  
Roanoke County, Virginia, United States, 24018

**1** Floor 1 - Utility

---

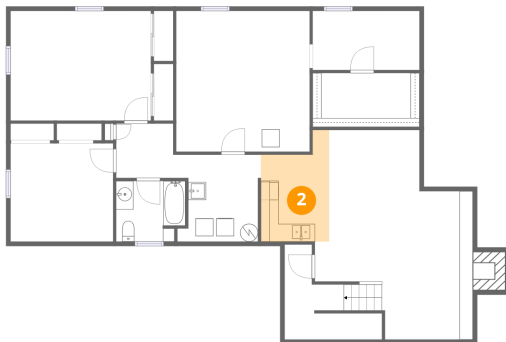


Dimensions: 15'0" x 15'10"  
Area: 238 sq. ft  
Counted as living area: No

Heated: Yes  
Finished: No  
Enclosed: Yes  
Contiguous: Yes  
Permitted: Yes  
Wet space: No  
Addition: No  
Conversion: No

**2** Floor 1 - Wet Bar

---

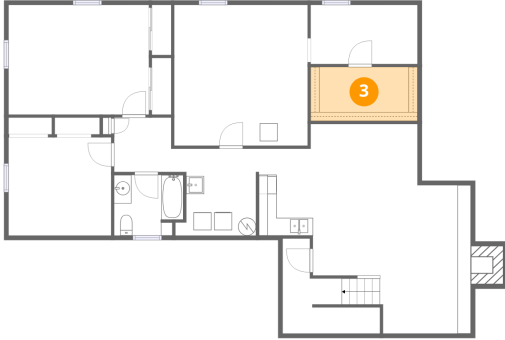


Dimensions: 7'8" x 12'7"  
Area: 96 sq. ft  
Counted as living area: Yes

Heated: Yes  
Finished: Yes  
Enclosed: Yes  
Contiguous: Yes  
Permitted: Yes  
Wet space: No  
Addition: No  
Conversion: No

5245 Carriage Drive, Sugar Loaf Estates, Cave Spring, Roanoke,  
Roanoke County, Virginia, United States, 24018

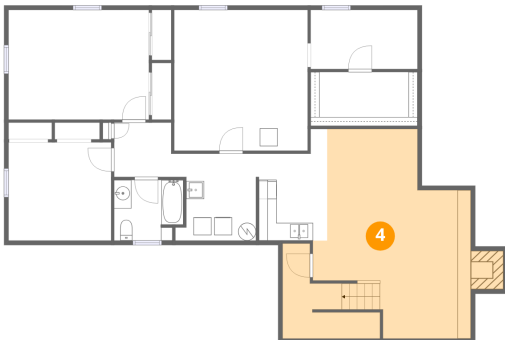
**3** Floor 1 - W.I.C.



Dimensions: 12'0" x 6'1"  
Area: 73 sq. ft  
Counted as living area: No

Heated: Yes  
Finished: Yes  
Enclosed: Yes  
Contiguous: No  
Permitted: Yes  
Wet space: No  
Addition: No  
Conversion: No

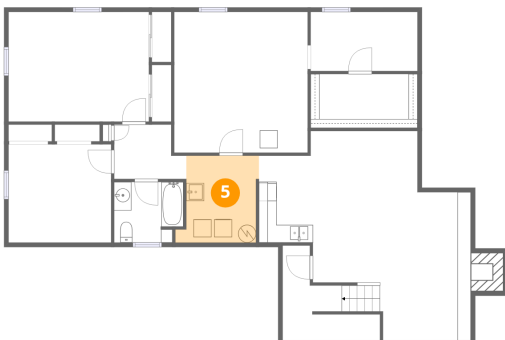
**4** Floor 1 - Family Room



Dimensions: 21'2" x 23'7"  
Area: 500 sq. ft  
Counted as living area: Yes

Heated: Yes  
Finished: Yes  
Enclosed: Yes  
Contiguous: Yes  
Permitted: Yes  
Wet space: No  
Addition: No  
Conversion: No

**5** Floor 1 - Utility



Dimensions: 9'1" x 9'9"  
Area: 88 sq. ft  
Counted as living area: Yes

Heated: Yes  
Finished: Yes  
Enclosed: Yes  
Contiguous: Yes  
Permitted: Yes  
Wet space: No  
Addition: No  
Conversion: No

5245 Carriage Drive, Sugar Loaf Estates, Cave Spring, Roanoke, Roanoke County, Virginia, United States, 24018

**6** Floor 1 - Storage



Dimensions: 12'0" x 6'7"  
Area: 79 sq. ft  
Counted as living area: No

Heated: No  
Finished: No  
Enclosed: No  
Contiguous: Yes  
Permitted: Yes  
Wet space: No  
Addition: No  
Conversion: No

**7** Floor 1 - Bedroom



Dimensions: 15'10" x 12'4"  
Area: 195 sq. ft  
Counted as living area: No

Heated: Yes  
Finished: No  
Enclosed: Yes  
Contiguous: Yes  
Permitted: Yes  
Wet space: No  
Addition: No  
Conversion: No

**8** Floor 1 - Hall

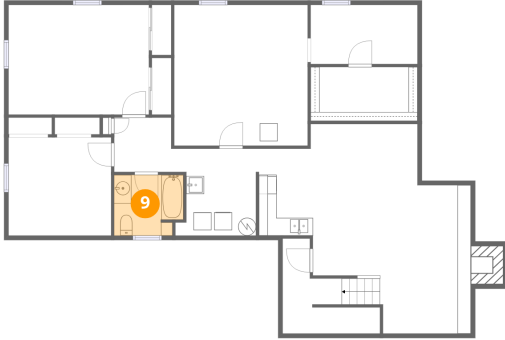


Dimensions: 8'2" x 6'1"  
Area: 50 sq. ft  
Counted as living area: Yes

Heated: Yes  
Finished: Yes  
Enclosed: Yes  
Contiguous: Yes  
Permitted: Yes  
Wet space: No  
Addition: No  
Conversion: No

5245 Carriage Drive, Sugar Loaf Estates, Cave Spring, Roanoke,  
Roanoke County, Virginia, United States, 24018

**9** Floor 1 - Bath



Dimensions: 7'10" x 6'10"  
Area: 53 sq. ft  
Counted as living area: Yes

Heated: Yes  
Finished: Yes  
Enclosed: Yes  
Contiguous: Yes  
Permitted: Yes  
Wet space: Yes  
Addition: No  
Conversion: No

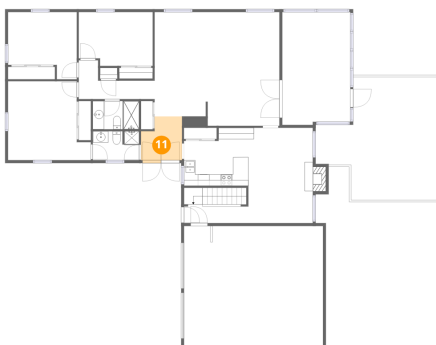
**10** Floor 1 - Bedroom



Dimensions: 11'7" x 11'0"  
Area: 127 sq. ft  
Counted as living area: No

Heated: Yes  
Finished: No  
Enclosed: Yes  
Contiguous: Yes  
Permitted: Yes  
Wet space: No  
Addition: No  
Conversion: No

**11** Floor 2 - Foyer



Dimensions: 7'2" x 8'2"  
Area: 59 sq. ft  
Counted as living area: Yes

Heated: Yes  
Finished: Yes  
Enclosed: Yes  
Contiguous: Yes  
Permitted: Yes  
Wet space: No  
Addition: No  
Conversion: No

5245 Carriage Drive, Sugar Loaf Estates, Cave Spring, Roanoke, Roanoke County, Virginia, United States, 24018

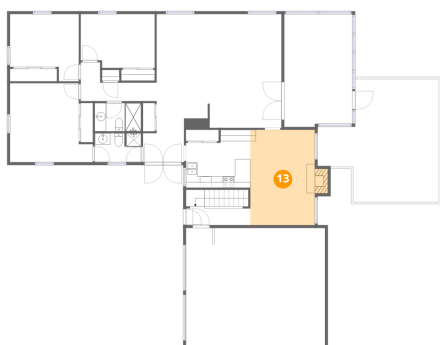
**12** Floor 2 - Bath



Dimensions: 8'2" x 5'1"  
Area: 41 sq. ft  
Counted as living area: Yes

Heated: Yes  
Finished: Yes  
Enclosed: Yes  
Contiguous: Yes  
Permitted: Yes  
Wet space: Yes  
Addition: No  
Conversion: No

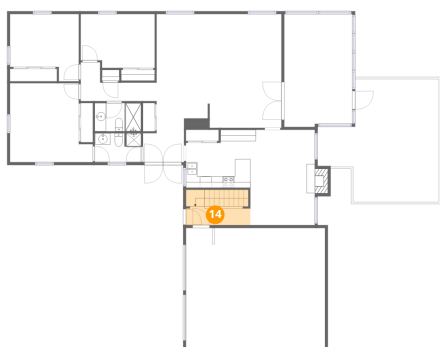
**13** Floor 2 - Dining Area



Dimensions: 11'3" x 17'10"  
Area: 201 sq. ft  
Counted as living area: Yes

Heated: Yes  
Finished: Yes  
Enclosed: Yes  
Contiguous: Yes  
Permitted: Yes  
Wet space: No  
Addition: No  
Conversion: No

**14** Floor 2 - Hall

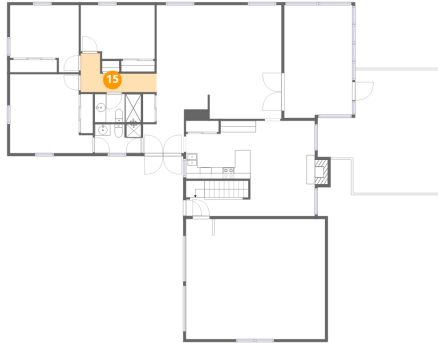


Dimensions: 11'3" x 3'3"  
Area: 37 sq. ft  
Counted as living area: Yes

Heated: Yes  
Finished: Yes  
Enclosed: Yes  
Contiguous: Yes  
Permitted: Yes  
Wet space: No  
Addition: No  
Conversion: No

5245 Carriage Drive, Sugar Loaf Estates, Cave Spring, Roanoke, Roanoke County, Virginia, United States, 24018

**15** Floor 2 - Hall



Dimensions: 13'4" x 6'10"  
Area: 91 sq. ft  
Counted as living area: Yes

Heated: Yes  
Finished: Yes  
Enclosed: Yes  
Contiguous: Yes  
Permitted: Yes  
Wet space: No  
Addition: No  
Conversion: No

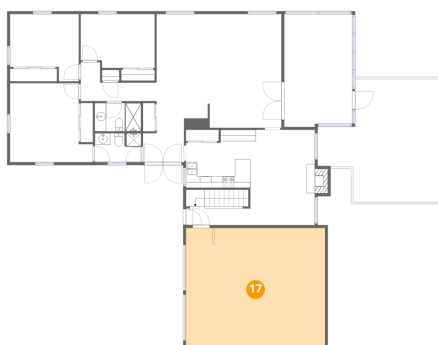
**16** Floor 2 - Patio



Dimensions: 21'3" x 21'6"  
Area: 458 sq. ft  
Counted as living area: No

Heated: No  
Finished: No  
Enclosed: No  
Contiguous: Yes  
Permitted: Yes  
Wet space: No  
Addition: No  
Conversion: No

**17** Floor 2 - Garage



Dimensions: 24'4" x 21'1"  
Area: 513 sq. ft  
Counted as living area: No

Heated: No  
Finished: No  
Enclosed: Yes  
Contiguous: Yes  
Permitted: Yes  
Wet space: No  
Addition: No  
Conversion: No

5245 Carriage Drive, Sugar Loaf Estates, Cave Spring, Roanoke,  
Roanoke County, Virginia, United States, 24018

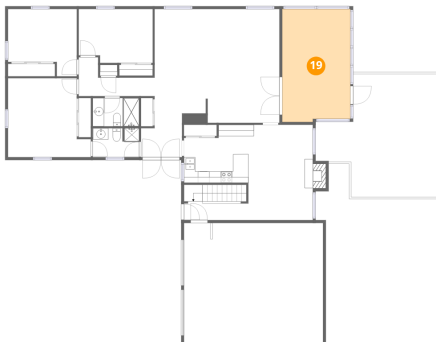
**18** Floor 2 - Primary Bedroom



Dimensions: 14'6" x 13'9"  
Area: 200 sq. ft  
Counted as living area: Yes

Heated: Yes  
Finished: Yes  
Enclosed: Yes  
Contiguous: Yes  
Permitted: Yes  
Wet space: No  
Addition: No  
Conversion: No

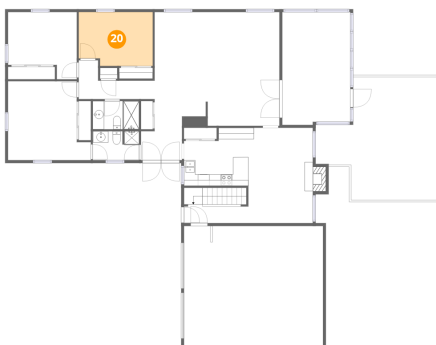
**19** Floor 2 - Screened Porch



Dimensions: 11'11" x 19'9"  
Area: 236 sq. ft  
Counted as living area: No

Heated: No  
Finished: No  
Enclosed: No  
Contiguous: Yes  
Permitted: Yes  
Wet space: No  
Addition: No  
Conversion: No

**20** Floor 2 - Bedroom



Dimensions: 13'0" x 9'5"  
Area: 122 sq. ft  
Counted as living area: Yes

Heated: Yes  
Finished: Yes  
Enclosed: Yes  
Contiguous: Yes  
Permitted: Yes  
Wet space: No  
Addition: No  
Conversion: No

5245 Carriage Drive, Sugar Loaf Estates, Cave Spring, Roanoke,  
Roanoke County, Virginia, United States, 24018

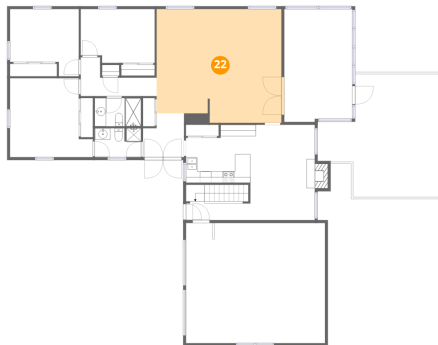
**21** Floor 2 - Bedroom



Dimensions: 12'1" x 11'9"  
Area: 142 sq. ft  
Counted as living area: Yes

Heated: Yes  
Finished: Yes  
Enclosed: Yes  
Contiguous: Yes  
Permitted: Yes  
Wet space: No  
Addition: No  
Conversion: No

**22** Floor 2 - Living Room



Dimensions: 22'5" x 19'11"  
Area: 446 sq. ft  
Counted as living area: Yes

Heated: Yes  
Finished: Yes  
Enclosed: Yes  
Contiguous: Yes  
Permitted: Yes  
Wet space: No  
Addition: No  
Conversion: No

**23** Floor 2 - Porch



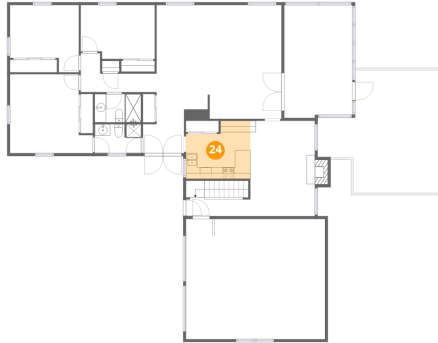
Dimensions: 17'7" x 13'5"  
Area: 236 sq. ft  
Counted as living area: No

Heated: No  
Finished: No  
Enclosed: No  
Contiguous: Yes  
Permitted: Yes  
Wet space: No  
Addition: No  
Conversion: No

5245 Carriage Drive, Sugar Loaf Estates, Cave Spring, Roanoke,  
Roanoke County, Virginia, United States, 24018

**24** Floor 2 - Kitchen

---



Dimensions: 11'4" x 10'2"  
Area: 114 sq. ft  
Counted as living area: Yes

Heated: Yes  
Finished: Yes  
Enclosed: Yes  
Contiguous: Yes  
Permitted: Yes  
Wet space: No  
Addition: No  
Conversion: No

**25** Floor 2 - Bath

---



Dimensions: 8'2" x 4'11"  
Area: 40 sq. ft  
Counted as living area: Yes

Heated: Yes  
Finished: Yes  
Enclosed: Yes  
Contiguous: Yes  
Permitted: Yes  
Wet space: Yes  
Addition: No  
Conversion: No