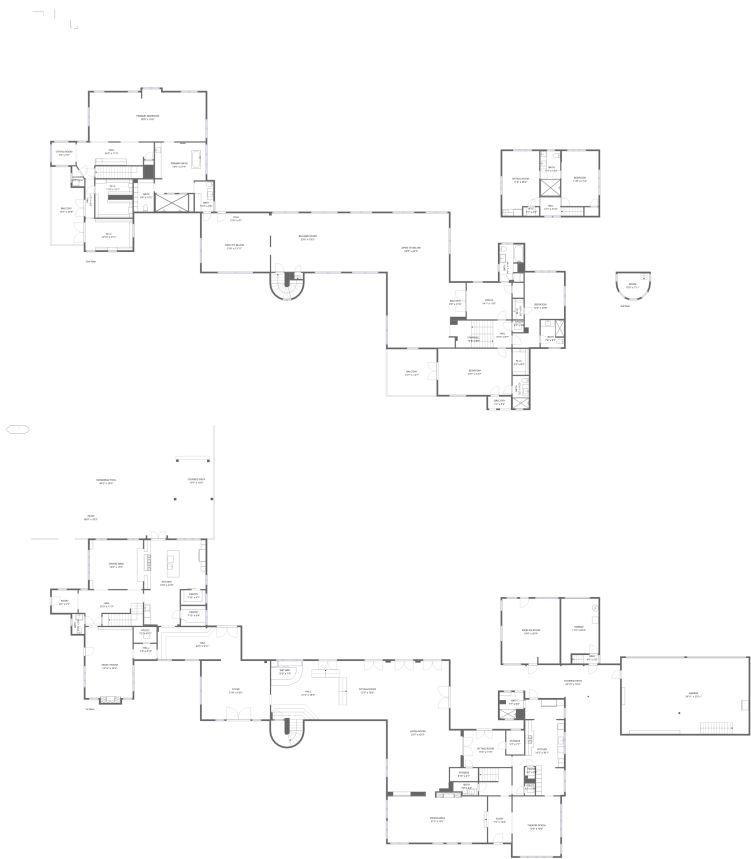


320 Park Street South, Old Pasadena, St. Petersburg, Pinellas
County, Florida, United States, 33707




Total Area: 10006 sq. ft

1st Floor: 5868 sq. ft, 2nd Floor: 4066 sq. ft, 3rd Floor: 72 sq. ft
Excluded: Utility 25 sq. ft, Storage 78 sq. ft, Garage 1164 sq. ft, Covered patio 309 sq. ft,
Patio 1474 sq. ft, Covered deck 153 sq. ft, Fireplace 11 sq. ft, Balcony 553 sq. ft, Stairwell
114 sq. ft, Open to below 1349 sq. ft, Walls: 777 sq. ft

Property summary

 **3**
Floors

 **4**
Bedrooms

 **5**
Bathrooms

Home data report

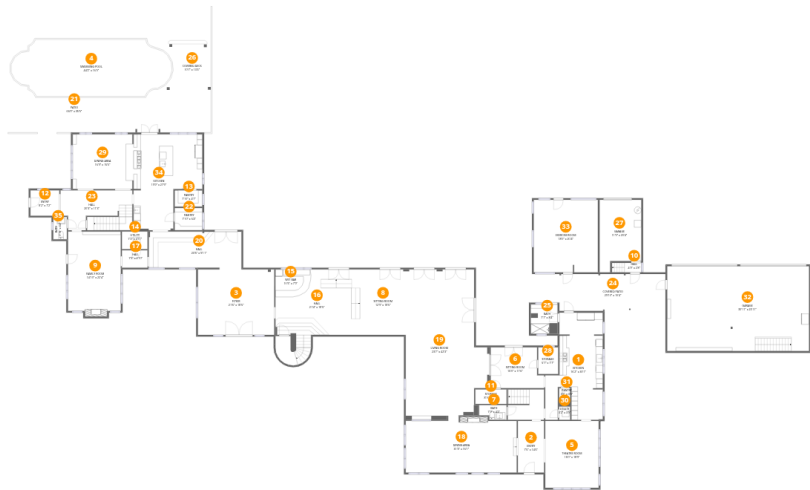
320 Park Street South, Old Pasadena, St. Petersburg, Pinellas
County, Florida, United States, 33707

 **2**
Half baths

 **2**
Garages

Home data report

320 Park Street South, Old Pasadena, St. Petersburg, Pinellas County, Florida, United States, 33707



Room dimensions

Floor 1 Total:5868sqft Excluded: 3201sqft

#		Dimensions	sqft	Counted as living area
1	Kitchen	16'2" x 30'1"	380 sq. ft	Yes
2	Entry	7'5" x 14'6"	107 sq. ft	Yes
3	Foyer	21'6" x 18'5"	395 sq. ft	Yes
4	Swimming Pool	44'2" x 16'0"	631 sq. ft	No
5	Theatre Room	15'0" x 18'9"	282 sq. ft	Yes
6	Sitting Room	15'0" x 11'6"	157 sq. ft	Yes
7	Bath	7'9" x 4'2"	28 sq. ft	Yes
8	Sitting Room	12'9" x 18'5"	235 sq. ft	Yes
9	Family Room	14'10" x 22'4"	341 sq. ft	Yes
10	Hall	4'9" x 2'8"	22 sq. ft	Yes
11	Storage	8'10" x 4'1"	36 sq. ft	No

Home data report

320 Park Street South, Old Pasadena, St. Petersburg, Pinellas County, Florida, United States, 33707

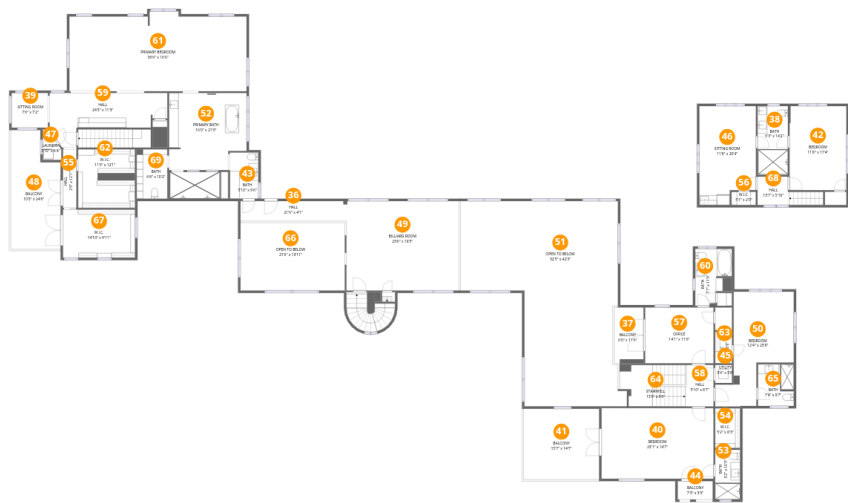
#		Dimensions	sqft	Counted as living area
12	Entry	8'2" x 7'2"	58 sq. ft	Yes
13	Pantry	7'10" x 4'7"	36 sq. ft	Yes
14	Utility	7'2" x 4'11"	36 sq. ft	Yes
15	Wet Bar	10'5" x 7'9"	81 sq. ft	Yes
16	Hall	21'4" x 18'5"	359 sq. ft	Yes
17	Hall	7'2" x 4'10"	35 sq. ft	Yes
18	Dining Area	31'3" x 16'1"	468 sq. ft	Yes
19	Living Room	23'7" x 42'3"	857 sq. ft	Yes
20	Hall	23'5" x 9'11"	268 sq. ft	Yes
21	Patio	66'0" x 35'5"	2105 sq. ft	No
22	Pantry	7'10" x 6'4"	49 sq. ft	Yes
23	Hall	20'3" x 11'3"	214 sq. ft	Yes
24	Covered Patio	29'10" x 10'4"	309 sq. ft	No
25	Bath	7'7" x 8'4"	63 sq. ft	Yes
26	Covered Deck	10'7" x 13'3"	153 sq. ft	No
27	Garage	11'9" x 20'4"	211 sq. ft	No
28	Storage	5'7" x 7'7"	42 sq. ft	No
29	Dining Area	16'9" x 15'5"	259 sq. ft	Yes
30	Utility	3'2" x 3'9"	12 sq. ft	No
31	Pantry	3'2" x 3'8"	15 sq. ft	Yes
32	Garage	39'11" x 23'11"	953 sq. ft	No

Home data report

320 Park Street South, Old Pasadena, St. Petersburg, Pinellas County, Florida, United States, 33707

#		Dimensions	sqft	Counted as living area
33	Exercise Room	18'0" x 20'4"	367 sq. ft	Yes
34	Kitchen	19'9" x 27'0"	431 sq. ft	Yes
35	Bath	3'10" x 6'4"	24 sq. ft	Yes

320 Park Street South, Old Pasadena, St. Petersburg, Pinellas County, Florida, United States, 33707



Room dimensions

Floor 2 Total:4066sqft Excluded: 2029sqft

#		Dimensions	sqft	Counted as living area
36	Hall	21'6" x 4'1"	95 sq. ft	Yes
37	Balcony	6'0" x 11'6"	73 sq. ft	No
38	Bath	6'3" x 14'2"	89 sq. ft	Yes
39	Sitting Room	7'6" x 7'2"	54 sq. ft	Yes
40	Bedroom	23'1" x 14'7"	335 sq. ft	Yes
41	Balcony	15'7" x 14'7"	226 sq. ft	No
42	Bedroom	11'8" x 17'4"	203 sq. ft	Yes
43	Bath	5'10" x 9'6"	56 sq. ft	Yes
44	Balcony	7'3" x 3'9"	27 sq. ft	No
45	Utility	3'6" x 3'8"	13 sq. ft	No
46	Sitting Room	11'8" x 20'4"	221 sq. ft	Yes

Home data report

320 Park Street South, Old Pasadena, St. Petersburg, Pinellas County, Florida, United States, 33707

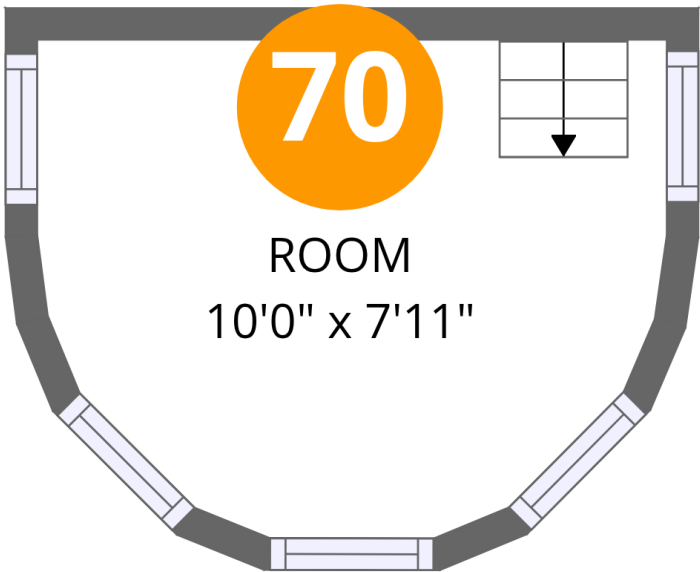
#		Dimensions	sqft	Counted as living area
47	Laundry	3'10" x 6'4"	19 sq. ft	Yes
48	Balcony	10'3" x 24'6"	224 sq. ft	No
49	Billiard Room	23'6" x 18'5"	435 sq. ft	Yes
50	Bedroom	12'4" x 23'8"	240 sq. ft	Yes
51	Open To Below	32'5" x 42'3"	1049 sq. ft	No
52	Primary Bath	16'0" x 21'9"	306 sq. ft	Yes
53	Bath	5'2" x 10'3"	53 sq. ft	Yes
54	W.I.C.	5'2" x 8'3"	42 sq. ft	Yes
55	Hall	2'9" x 12'1"	33 sq. ft	Yes
56	W.I.C.	5'1" x 2'9"	14 sq. ft	Yes
57	Office	14'1" x 11'6"	162 sq. ft	Yes
58	Hall	5'10" x 8'7"	48 sq. ft	Yes
59	Hall	24'3" x 11'3"	184 sq. ft	Yes
60	Bath	7'7" x 11'9"	78 sq. ft	Yes
61	Primary Bedroom	36'6" x 16'6"	568 sq. ft	Yes
62	W.I.C.	11'9" x 12'1"	142 sq. ft	Yes
63	W.I.C.	3'6" x 6'6"	23 sq. ft	Yes
64	Stairwell	13'6" x 8'6"	112 sq. ft	No
65	Bath	7'4" x 8'7"	62 sq. ft	Yes
66	Open To Below	21'6" x 13'11"	300 sq. ft	No
67	W.I.C.	14'10" x 9'11"	148 sq. ft	Yes

Home data report

320 Park Street South, Old Pasadena, St. Petersburg, Pinellas County, Florida, United States, 33707

#		Dimensions	sqft	Counted as living area
68	Hall	13'7" x 5'10"	56 sq. ft	Yes
69	Bath	6'4" x 10'2"	64 sq. ft	Yes

320 Park Street South, Old Pasadena, St. Petersburg, Pinellas
County, Florida, United States, 33707



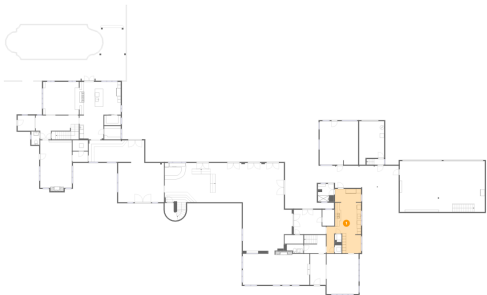
Room dimensions

Floor 3 Total:72sqft Excluded: 0sqft

#		Dimensions	sqft	Counted as living area
70	Room	10'0" x 7'11"	69 sq. ft	Yes

320 Park Street South, Old Pasadena, St. Petersburg, Pinellas
County, Florida, United States, 33707

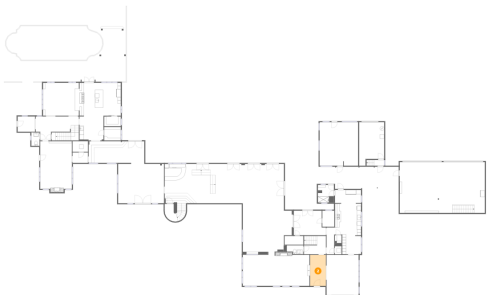
1 Floor 1 - Kitchen



Dimensions: 16'2" x 30'1"
Area: 380 sq. ft
Counted as living area: Yes

Heated: Yes
Finished: Yes
Enclosed: Yes
Contiguous: Yes
Permitted: Yes
Wet space: No
Addition: No
Conversion: No

2 Floor 1 - Entry

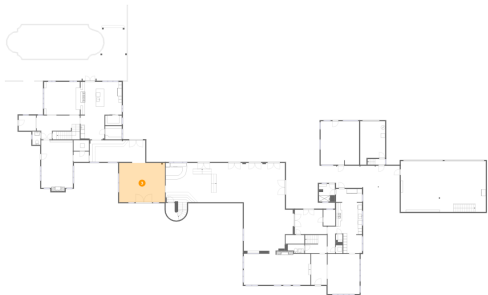


Dimensions: 7'5" x 14'6"
Area: 107 sq. ft
Counted as living area: Yes

Heated: Yes
Finished: Yes
Enclosed: Yes
Contiguous: Yes
Permitted: Yes
Wet space: No
Addition: No
Conversion: No

320 Park Street South, Old Pasadena, St. Petersburg, Pinellas
County, Florida, United States, 33707

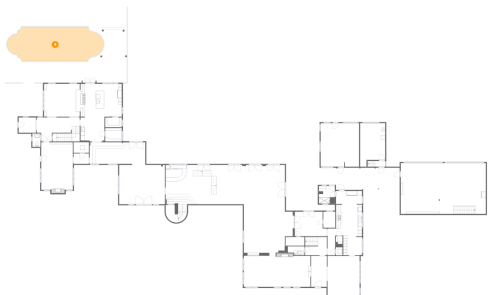
3 Floor 1 - Foyer



Dimensions: 21'6" x 18'5"
Area: 395 sq. ft
Counted as living area: Yes

Heated: Yes
Finished: Yes
Enclosed: Yes
Contiguous: Yes
Permitted: Yes
Wet space: No
Addition: No
Conversion: No

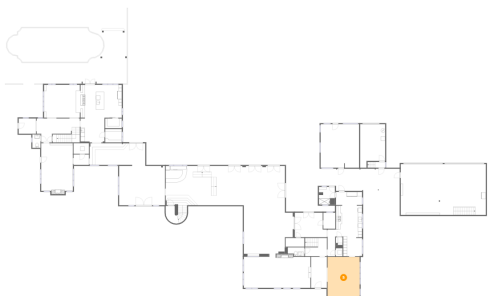
4 Floor 1 - Swimming Pool



Dimensions: 44'2" x 16'0"
Area: 631 sq. ft
Counted as living area: No

Heated: No
Finished: No
Enclosed: No
Contiguous: Yes
Permitted: No
Wet space: No
Addition: No
Conversion: No

5 Floor 1 - Theatre Room

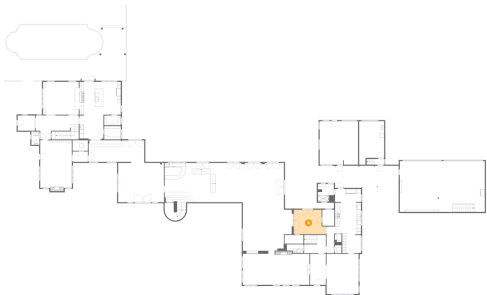


Dimensions: 15'0" x 18'9"
Area: 282 sq. ft
Counted as living area: Yes

Heated: Yes
Finished: Yes
Enclosed: Yes
Contiguous: Yes
Permitted: Yes
Wet space: No
Addition: No
Conversion: No

320 Park Street South, Old Pasadena, St. Petersburg, Pinellas
County, Florida, United States, 33707

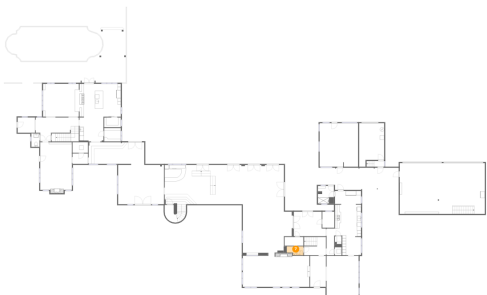
6 Floor 1 - Sitting Room



Dimensions: 15'0" x 11'6"
Area: 157 sq. ft
Counted as living area: Yes

Heated: Yes
Finished: Yes
Enclosed: Yes
Contiguous: Yes
Permitted: Yes
Wet space: No
Addition: No
Conversion: No

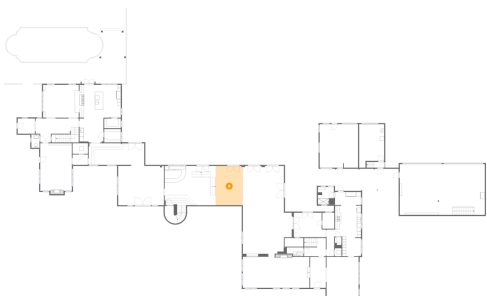
7 Floor 1 - Bath



Dimensions: 7'9" x 4'2"
Area: 28 sq. ft
Counted as living area: Yes

Heated: Yes
Finished: Yes
Enclosed: Yes
Contiguous: Yes
Permitted: Yes
Wet space: No
Addition: No
Conversion: No

8 Floor 1 - Sitting Room

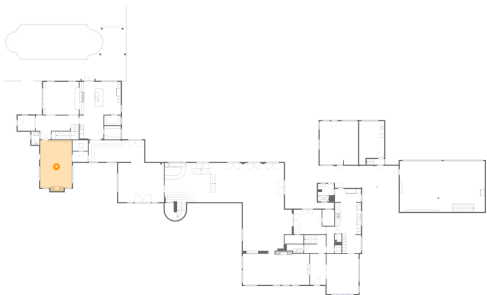


Dimensions: 12'9" x 18'5"
Area: 235 sq. ft
Counted as living area: Yes

Heated: Yes
Finished: Yes
Enclosed: Yes
Contiguous: Yes
Permitted: Yes
Wet space: No
Addition: No
Conversion: No

320 Park Street South, Old Pasadena, St. Petersburg, Pinellas
County, Florida, United States, 33707

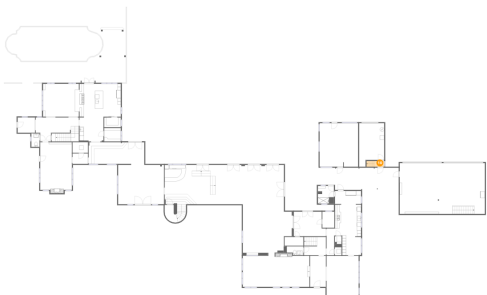
9 Floor 1 - Family Room



Dimensions: 14'10" x 22'4"
Area: 341 sq. ft
Counted as living area: Yes

Heated: Yes
Finished: Yes
Enclosed: Yes
Contiguous: Yes
Permitted: Yes
Wet space: No
Addition: No
Conversion: No

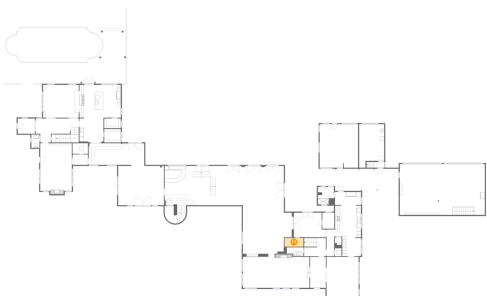
10 Floor 1 - Hall



Dimensions: 4'9" x 2'8"
Area: 22 sq. ft
Counted as living area: Yes

Heated: Yes
Finished: Yes
Enclosed: Yes
Contiguous: Yes
Permitted: Yes
Wet space: No
Addition: No
Conversion: No

11 Floor 1 - Storage

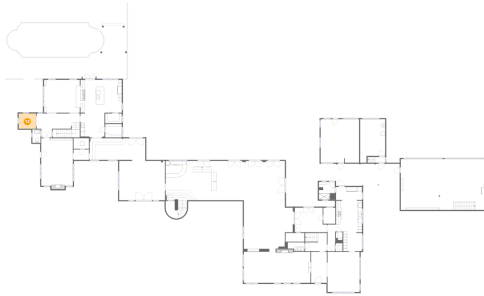


Dimensions: 8'10" x 4'1"
Area: 36 sq. ft
Counted as living area: No

Heated: No
Finished: Yes
Enclosed: No
Contiguous: Yes
Permitted: Yes
Wet space: No
Addition: No
Conversion: No

320 Park Street South, Old Pasadena, St. Petersburg, Pinellas
County, Florida, United States, 33707

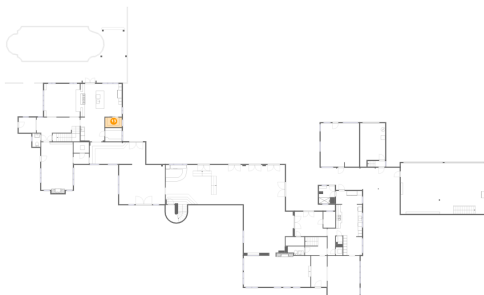
12 Floor 1 - Entry



Dimensions: 8'2" x 7'2"
Area: 58 sq. ft
Counted as living area: Yes

Heated: Yes
Finished: Yes
Enclosed: Yes
Contiguous: Yes
Permitted: Yes
Wet space: No
Addition: No
Conversion: No

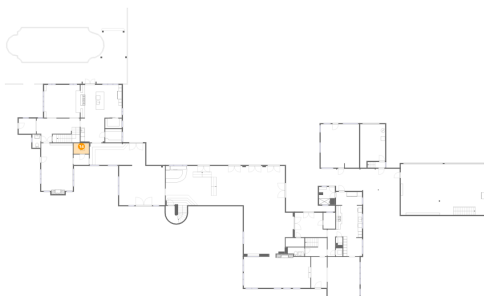
13 Floor 1 - Pantry



Dimensions: 7'10" x 4'7"
Area: 36 sq. ft
Counted as living area: Yes

Heated: Yes
Finished: Yes
Enclosed: Yes
Contiguous: Yes
Permitted: Yes
Wet space: No
Addition: No
Conversion: No

14 Floor 1 - Utility

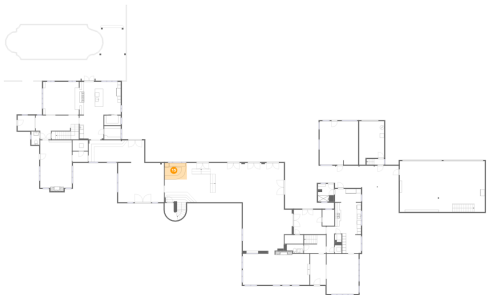


Dimensions: 7'2" x 4'11"
Area: 36 sq. ft
Counted as living area: Yes

Heated: Yes
Finished: Yes
Enclosed: Yes
Contiguous: Yes
Permitted: Yes
Wet space: No
Addition: No
Conversion: No

320 Park Street South, Old Pasadena, St. Petersburg, Pinellas
County, Florida, United States, 33707

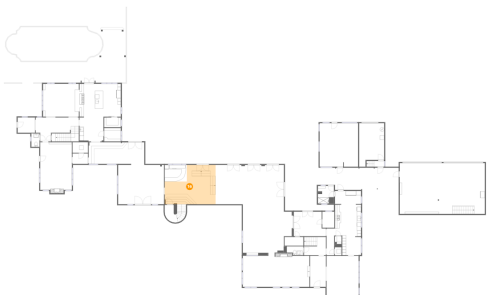
15 Floor 1 - Wet Bar



Dimensions: 10'5" x 7'9"
Area: 81 sq. ft
Counted as living area: Yes

Heated: Yes
Finished: Yes
Enclosed: Yes
Contiguous: Yes
Permitted: Yes
Wet space: No
Addition: No
Conversion: No

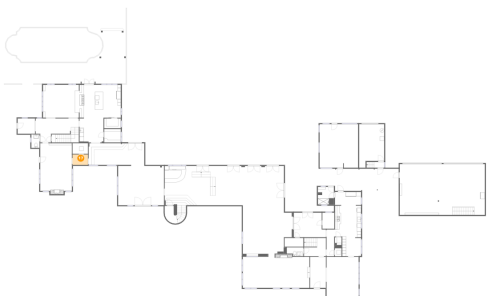
16 Floor 1 - Hall



Dimensions: 21'4" x 18'5"
Area: 359 sq. ft
Counted as living area: Yes

Heated: Yes
Finished: Yes
Enclosed: Yes
Contiguous: Yes
Permitted: Yes
Wet space: No
Addition: No
Conversion: No

17 Floor 1 - Hall

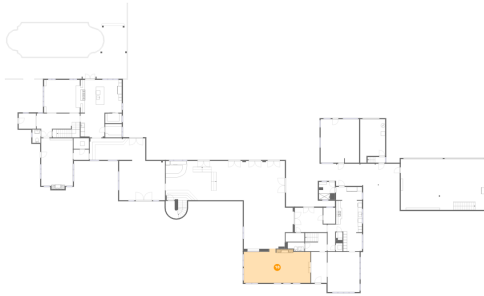


Dimensions: 7'2" x 4'10"
Area: 35 sq. ft
Counted as living area: Yes

Heated: Yes
Finished: Yes
Enclosed: Yes
Contiguous: Yes
Permitted: Yes
Wet space: No
Addition: No
Conversion: No

320 Park Street South, Old Pasadena, St. Petersburg, Pinellas
County, Florida, United States, 33707

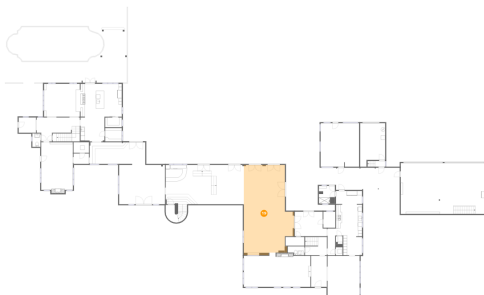
18 Floor 1 - Dining Area



Dimensions: 31'3" x 16'1"
Area: 468 sq. ft
Counted as living area: Yes

Heated: Yes
Finished: Yes
Enclosed: Yes
Contiguous: Yes
Permitted: Yes
Wet space: No
Addition: No
Conversion: No

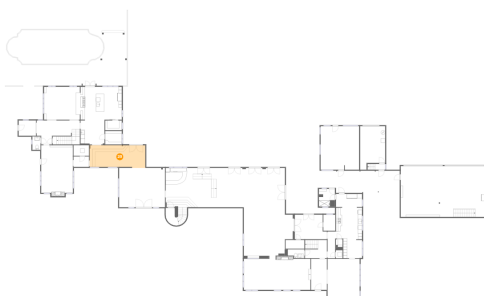
19 Floor 1 - Living Room



Dimensions: 23'7" x 42'3"
Area: 857 sq. ft
Counted as living area: Yes

Heated: Yes
Finished: Yes
Enclosed: Yes
Contiguous: Yes
Permitted: Yes
Wet space: No
Addition: No
Conversion: No

20 Floor 1 - Hall

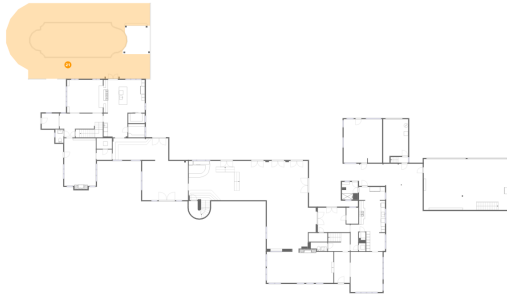


Dimensions: 23'5" x 9'11"
Area: 268 sq. ft
Counted as living area: Yes

Heated: Yes
Finished: Yes
Enclosed: Yes
Contiguous: Yes
Permitted: Yes
Wet space: No
Addition: No
Conversion: No

320 Park Street South, Old Pasadena, St. Petersburg, Pinellas
County, Florida, United States, 33707

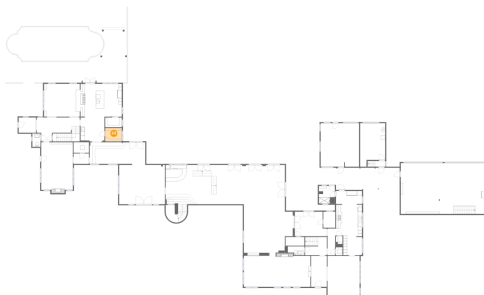
21 Floor 1 - Patio



Dimensions: 66'0" x 35'5"
Area: 2105 sq. ft
Counted as living area: No

Heated: No
Finished: No
Enclosed: No
Contiguous: Yes
Permitted: Yes
Wet space: No
Addition: No
Conversion: No

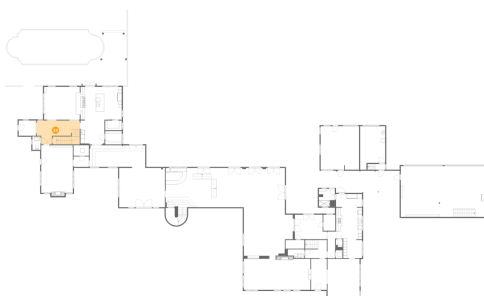
22 Floor 1 - Pantry



Dimensions: 7'10" x 6'4"
Area: 49 sq. ft
Counted as living area: Yes

Heated: Yes
Finished: Yes
Enclosed: Yes
Contiguous: Yes
Permitted: Yes
Wet space: No
Addition: No
Conversion: No

23 Floor 1 - Hall

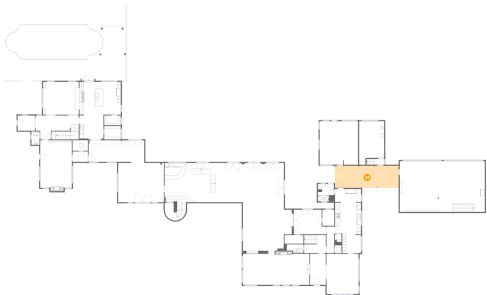


Dimensions: 20'3" x 11'3"
Area: 214 sq. ft
Counted as living area: Yes

Heated: Yes
Finished: Yes
Enclosed: Yes
Contiguous: Yes
Permitted: Yes
Wet space: No
Addition: No
Conversion: No

320 Park Street South, Old Pasadena, St. Petersburg, Pinellas
County, Florida, United States, 33707

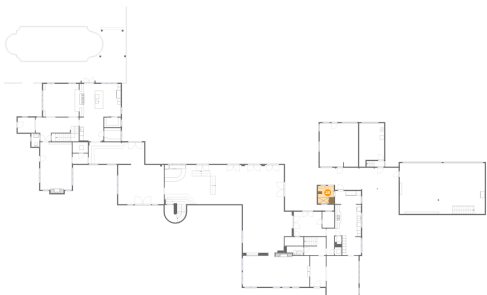
24 Floor 1 - Covered Patio



Dimensions: 29'10" x 10'4"
Area: 309 sq. ft
Counted as living area: No

Heated: No
Finished: No
Enclosed: No
Contiguous: Yes
Permitted: Yes
Wet space: No
Addition: No
Conversion: No

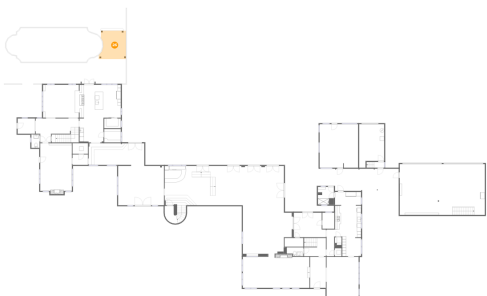
25 Floor 1 - Bath



Dimensions: 7'7" x 8'4"
Area: 63 sq. ft
Counted as living area: Yes

Heated: Yes
Finished: Yes
Enclosed: Yes
Contiguous: Yes
Permitted: Yes
Wet space: Yes
Addition: No
Conversion: No

26 Floor 1 - Covered Deck

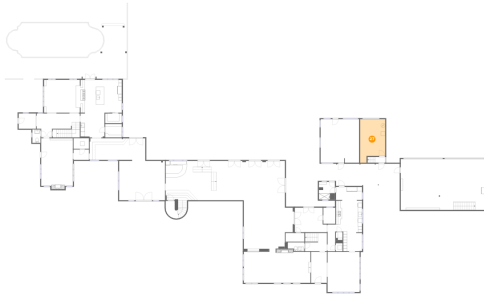


Dimensions: 10'7" x 13'3"
Area: 153 sq. ft
Counted as living area: No

Heated: No
Finished: No
Enclosed: No
Contiguous: Yes
Permitted: Yes
Wet space: No
Addition: No
Conversion: No

320 Park Street South, Old Pasadena, St. Petersburg, Pinellas
County, Florida, United States, 33707

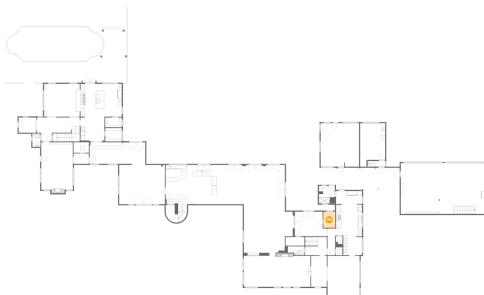
27 Floor 1 - Garage



Dimensions: 11'9" x 20'4"
Area: 211 sq. ft
Counted as living area: No

Heated: No
Finished: No
Enclosed: Yes
Contiguous: Yes
Permitted: Yes
Wet space: No
Addition: No
Conversion: No

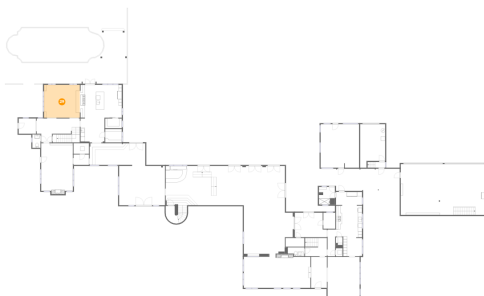
28 Floor 1 - Storage



Dimensions: 5'7" x 7'7"
Area: 42 sq. ft
Counted as living area: No

Heated: No
Finished: Yes
Enclosed: No
Contiguous: Yes
Permitted: Yes
Wet space: No
Addition: No
Conversion: No

29 Floor 1 - Dining Area

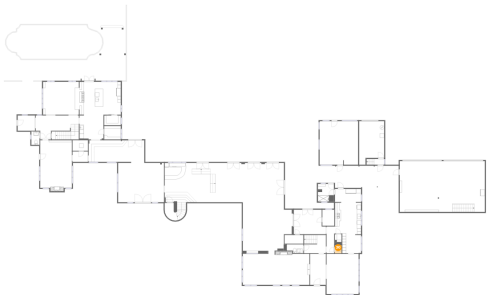


Dimensions: 16'9" x 15'5"
Area: 259 sq. ft
Counted as living area: Yes

Heated: Yes
Finished: Yes
Enclosed: Yes
Contiguous: Yes
Permitted: Yes
Wet space: No
Addition: No
Conversion: No

320 Park Street South, Old Pasadena, St. Petersburg, Pinellas
County, Florida, United States, 33707

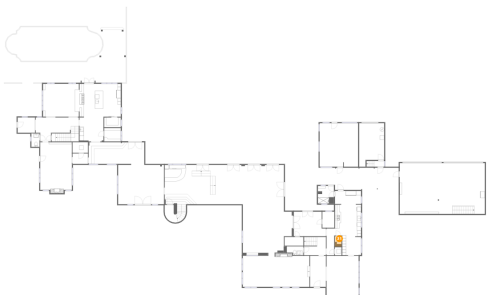
30 Floor 1 - Utility



Dimensions: 3'2" x 3'9"
Area: 12 sq. ft
Counted as living area: No

Heated: Yes
Finished: No
Enclosed: Yes
Contiguous: Yes
Permitted: Yes
Wet space: No
Addition: No
Conversion: No

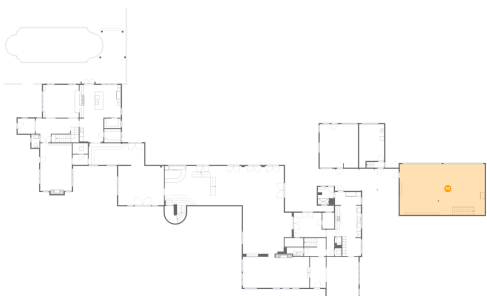
31 Floor 1 - Pantry



Dimensions: 3'2" x 3'8"
Area: 15 sq. ft
Counted as living area: Yes

Heated: Yes
Finished: Yes
Enclosed: Yes
Contiguous: Yes
Permitted: Yes
Wet space: No
Addition: No
Conversion: No

32 Floor 1 - Garage

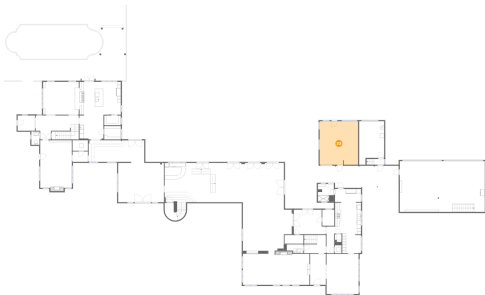


Dimensions: 39'11" x 23'11"
Area: 953 sq. ft
Counted as living area: No

Heated: No
Finished: No
Enclosed: Yes
Contiguous: Yes
Permitted: Yes
Wet space: No
Addition: No
Conversion: No

320 Park Street South, Old Pasadena, St. Petersburg, Pinellas
County, Florida, United States, 33707

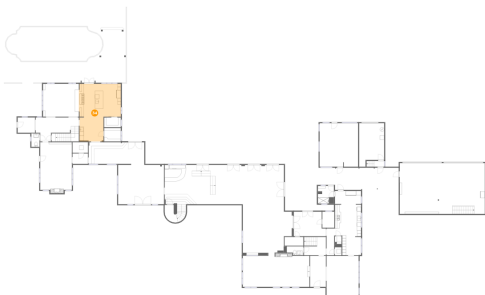
33 Floor 1 - Exercise Room



Dimensions: 18'0" x 20'4"
Area: 367 sq. ft
Counted as living area: Yes

Heated: Yes
Finished: Yes
Enclosed: Yes
Contiguous: Yes
Permitted: Yes
Wet space: No
Addition: No
Conversion: No

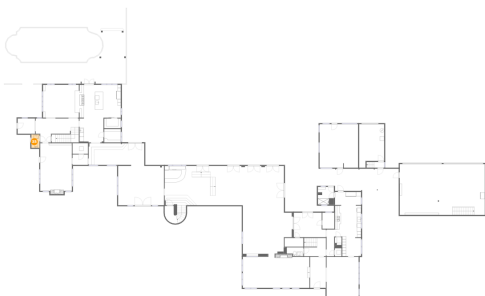
34 Floor 1 - Kitchen



Dimensions: 19'9" x 27'0"
Area: 431 sq. ft
Counted as living area: Yes

Heated: Yes
Finished: Yes
Enclosed: Yes
Contiguous: Yes
Permitted: Yes
Wet space: No
Addition: No
Conversion: No

35 Floor 1 - Bath

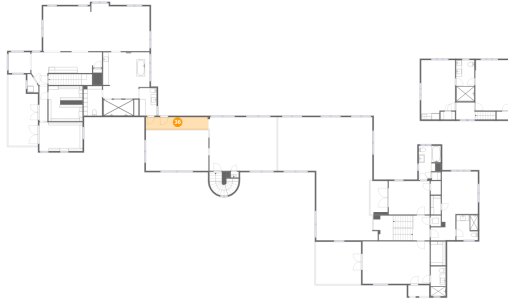


Dimensions: 3'10" x 6'4"
Area: 24 sq. ft
Counted as living area: Yes

Heated: Yes
Finished: Yes
Enclosed: Yes
Contiguous: Yes
Permitted: Yes
Wet space: No
Addition: No
Conversion: No

320 Park Street South, Old Pasadena, St. Petersburg, Pinellas
County, Florida, United States, 33707

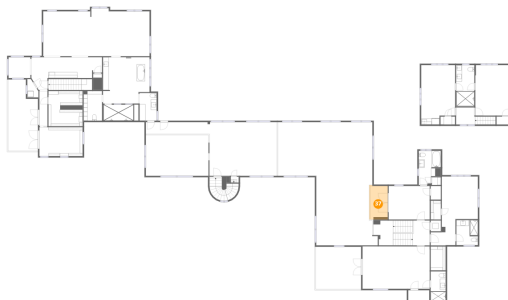
36 Floor 2 - Hall



Dimensions: 21'6" x 4'1"
Area: 95 sq. ft
Counted as living area: Yes

Heated: Yes
Finished: Yes
Enclosed: Yes
Contiguous: Yes
Permitted: Yes
Wet space: No
Addition: No
Conversion: No

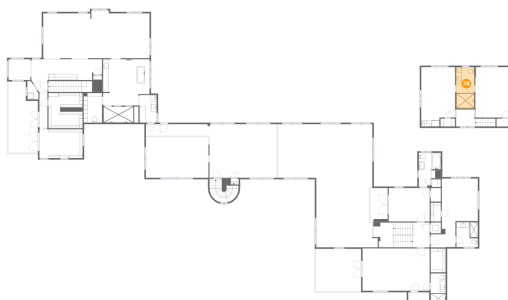
37 Floor 2 - Balcony



Dimensions: 6'0" x 11'6"
Area: 73 sq. ft
Counted as living area: No

Heated: No
Finished: No
Enclosed: No
Contiguous: Yes
Permitted: Yes
Wet space: No
Addition: No
Conversion: No

38 Floor 2 - Bath

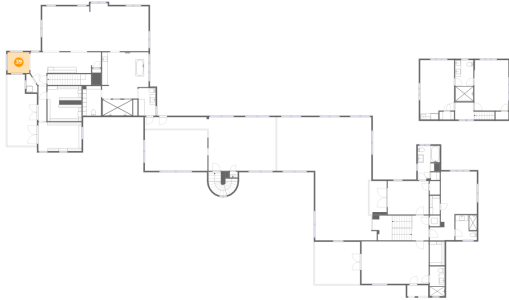


Dimensions: 6'3" x 14'2"
Area: 89 sq. ft
Counted as living area: Yes

Heated: Yes
Finished: Yes
Enclosed: Yes
Contiguous: Yes
Permitted: Yes
Wet space: Yes
Addition: No
Conversion: No

320 Park Street South, Old Pasadena, St. Petersburg, Pinellas
County, Florida, United States, 33707

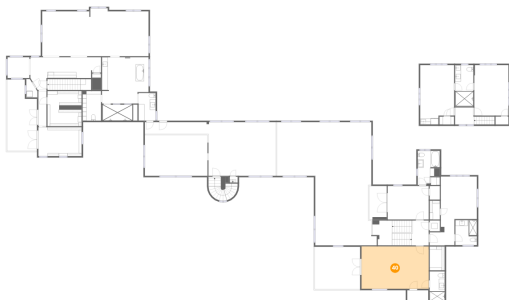
39 Floor 2 - Sitting Room



Dimensions: 7'6" x 7'2"
Area: 54 sq. ft
Counted as living area: Yes

Heated: Yes
Finished: Yes
Enclosed: Yes
Contiguous: Yes
Permitted: Yes
Wet space: No
Addition: No
Conversion: No

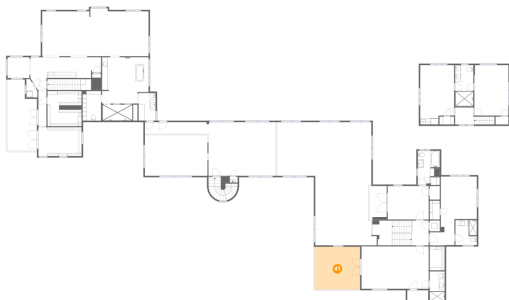
40 Floor 2 - Bedroom



Dimensions: 23'1" x 14'7"
Area: 335 sq. ft
Counted as living area: Yes

Heated: Yes
Finished: Yes
Enclosed: Yes
Contiguous: Yes
Permitted: Yes
Wet space: No
Addition: No
Conversion: No

41 Floor 2 - Balcony

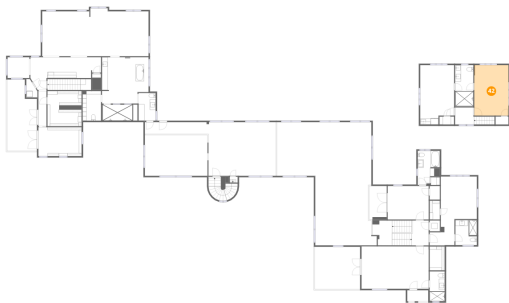


Dimensions: 15'7" x 14'7"
Area: 226 sq. ft
Counted as living area: No

Heated: No
Finished: No
Enclosed: No
Contiguous: Yes
Permitted: Yes
Wet space: No
Addition: No
Conversion: No

320 Park Street South, Old Pasadena, St. Petersburg, Pinellas
County, Florida, United States, 33707

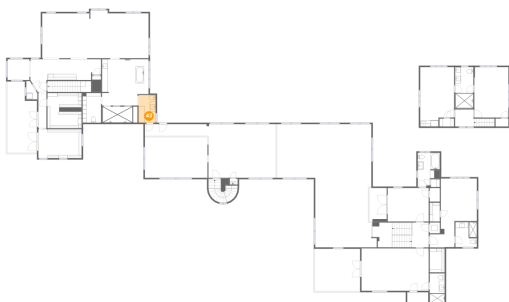
42 Floor 2 - Bedroom



Dimensions: 11'8" x 17'4"
Area: 203 sq. ft
Counted as living area: Yes

Heated: Yes
Finished: Yes
Enclosed: Yes
Contiguous: Yes
Permitted: Yes
Wet space: No
Addition: No
Conversion: No

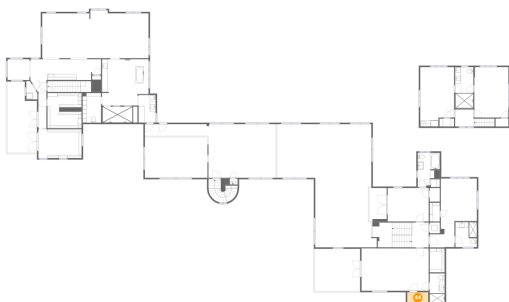
43 Floor 2 - Bath



Dimensions: 5'10" x 9'6"
Area: 56 sq. ft
Counted as living area: Yes

Heated: Yes
Finished: Yes
Enclosed: Yes
Contiguous: Yes
Permitted: Yes
Wet space: Yes
Addition: No
Conversion: No

44 Floor 2 - Balcony

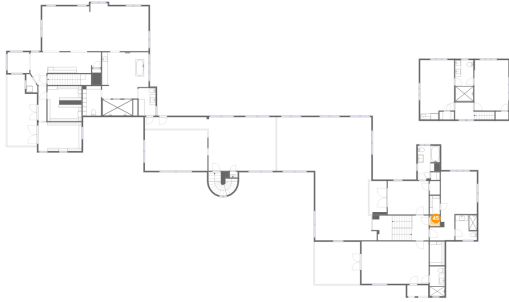


Dimensions: 7'3" x 3'9"
Area: 27 sq. ft
Counted as living area: No

Heated: No
Finished: No
Enclosed: No
Contiguous: Yes
Permitted: Yes
Wet space: No
Addition: No
Conversion: No

320 Park Street South, Old Pasadena, St. Petersburg, Pinellas
County, Florida, United States, 33707

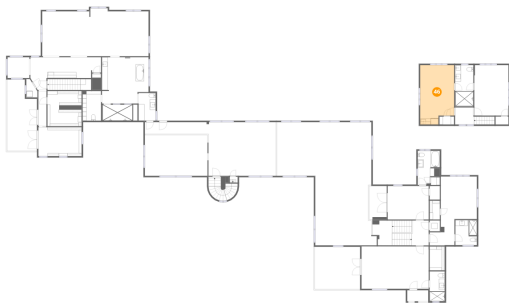
45 Floor 2 - Utility



Dimensions: 3'6" x 3'8"
Area: 13 sq. ft
Counted as living area: No

Heated: Yes
Finished: No
Enclosed: Yes
Contiguous: Yes
Permitted: Yes
Wet space: No
Addition: No
Conversion: No

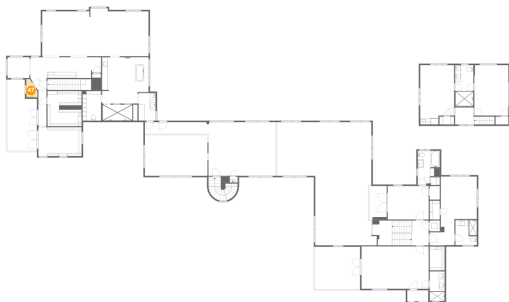
46 Floor 2 - Sitting Room



Dimensions: 11'8" x 20'4"
Area: 221 sq. ft
Counted as living area: Yes

Heated: Yes
Finished: Yes
Enclosed: Yes
Contiguous: Yes
Permitted: Yes
Wet space: No
Addition: No
Conversion: No

47 Floor 2 - Laundry

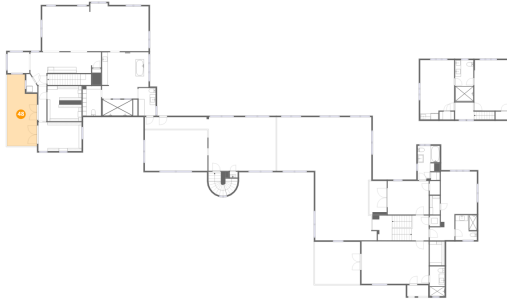


Dimensions: 3'10" x 6'4"
Area: 19 sq. ft
Counted as living area: Yes

Heated: Yes
Finished: Yes
Enclosed: Yes
Contiguous: Yes
Permitted: Yes
Wet space: No
Addition: No
Conversion: No

320 Park Street South, Old Pasadena, St. Petersburg, Pinellas
County, Florida, United States, 33707

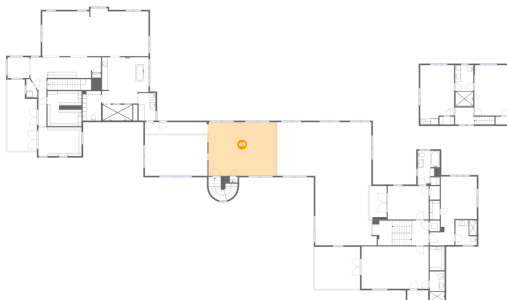
48 Floor 2 - Balcony



Dimensions: 10'3" x 24'6"
Area: 224 sq. ft
Counted as living area: No

Heated: No
Finished: No
Enclosed: No
Contiguous: Yes
Permitted: Yes
Wet space: No
Addition: No
Conversion: No

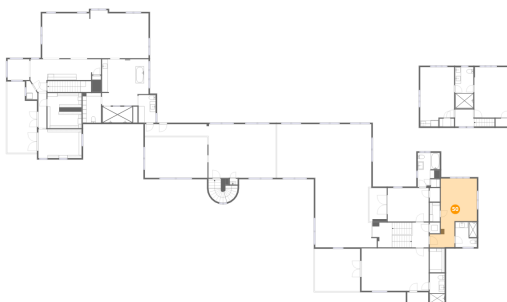
49 Floor 2 - Billiard Room



Dimensions: 23'6" x 18'5"
Area: 435 sq. ft
Counted as living area: Yes

Heated: Yes
Finished: Yes
Enclosed: Yes
Contiguous: Yes
Permitted: Yes
Wet space: No
Addition: No
Conversion: No

50 Floor 2 - Bedroom

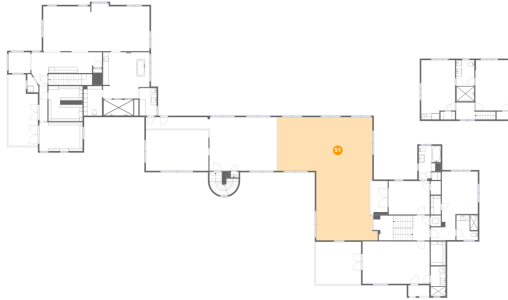


Dimensions: 12'4" x 23'8"
Area: 240 sq. ft
Counted as living area: Yes

Heated: Yes
Finished: Yes
Enclosed: Yes
Contiguous: Yes
Permitted: Yes
Wet space: No
Addition: No
Conversion: No

320 Park Street South, Old Pasadena, St. Petersburg, Pinellas
County, Florida, United States, 33707

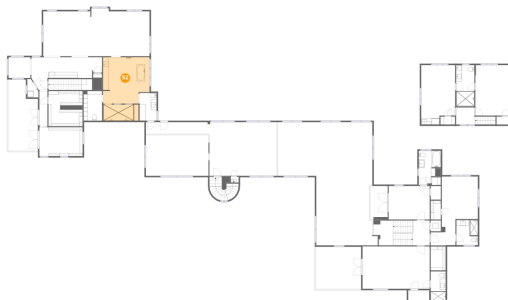
51 Floor 2 - Open To Below



Dimensions: 32'5" x 42'3"
Area: 1049 sq. ft
Counted as living area: No

Heated: No
Finished: No
Enclosed: No
Contiguous: Yes
Permitted: No
Wet space: No
Addition: No
Conversion: No

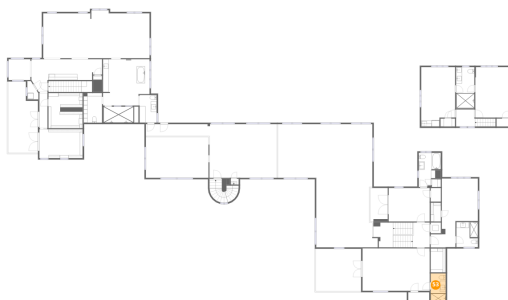
52 Floor 2 - Primary Bath



Dimensions: 16'0" x 21'9"
Area: 306 sq. ft
Counted as living area: Yes

Heated: Yes
Finished: Yes
Enclosed: Yes
Contiguous: Yes
Permitted: Yes
Wet space: Yes
Addition: No
Conversion: No

53 Floor 2 - Bath

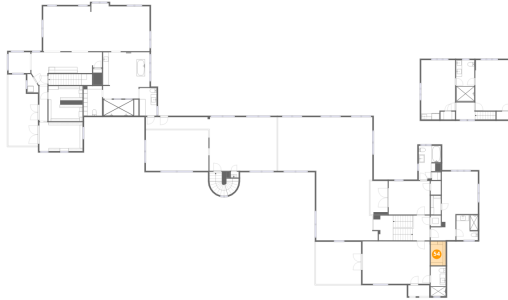


Dimensions: 5'2" x 10'3"
Area: 53 sq. ft
Counted as living area: Yes

Heated: Yes
Finished: Yes
Enclosed: Yes
Contiguous: Yes
Permitted: Yes
Wet space: Yes
Addition: No
Conversion: No

320 Park Street South, Old Pasadena, St. Petersburg, Pinellas
County, Florida, United States, 33707

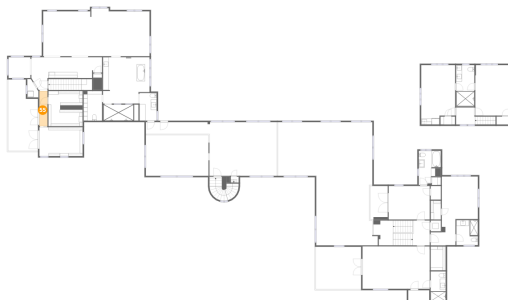
54 Floor 2 - W.I.C.



Dimensions: 5'2" x 8'3"
Area: 42 sq. ft
Counted as living area: No

Heated: Yes
Finished: Yes
Enclosed: Yes
Contiguous: No
Permitted: Yes
Wet space: No
Addition: No
Conversion: No

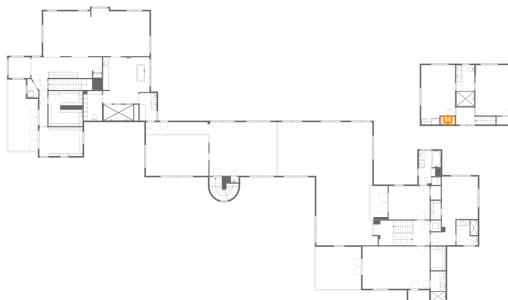
55 Floor 2 - Hall



Dimensions: 2'9" x 12'1"
Area: 33 sq. ft
Counted as living area: Yes

Heated: Yes
Finished: Yes
Enclosed: Yes
Contiguous: Yes
Permitted: Yes
Wet space: No
Addition: No
Conversion: No

56 Floor 2 - W.I.C.

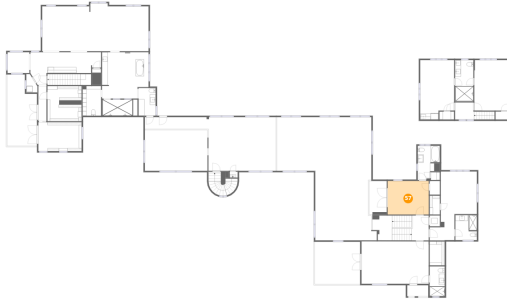


Dimensions: 5'1" x 2'9"
Area: 14 sq. ft
Counted as living area: Yes

Heated: Yes
Finished: Yes
Enclosed: Yes
Contiguous: Yes
Permitted: Yes
Wet space: No
Addition: No
Conversion: No

320 Park Street South, Old Pasadena, St. Petersburg, Pinellas
County, Florida, United States, 33707

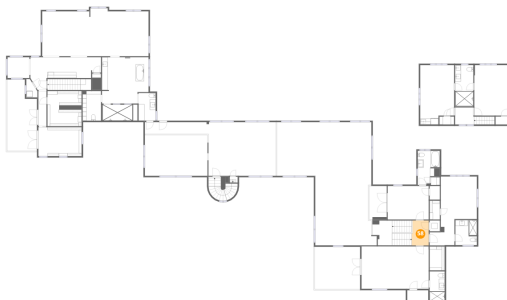
57 Floor 2 - Office



Dimensions: 14'1" x 11'6"
Area: 162 sq. ft
Counted as living area: Yes

Heated: Yes
Finished: Yes
Enclosed: Yes
Contiguous: Yes
Permitted: Yes
Wet space: No
Addition: No
Conversion: No

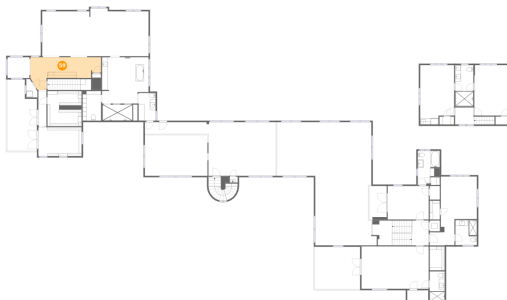
58 Floor 2 - Hall



Dimensions: 5'10" x 8'7"
Area: 48 sq. ft
Counted as living area: Yes

Heated: Yes
Finished: Yes
Enclosed: Yes
Contiguous: Yes
Permitted: Yes
Wet space: No
Addition: No
Conversion: No

59 Floor 2 - Hall

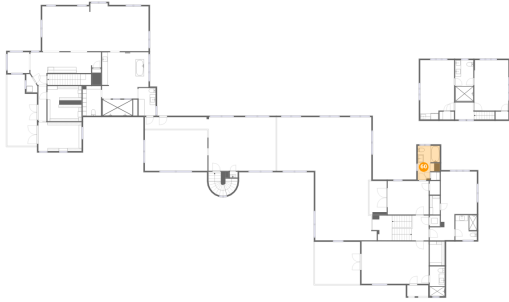


Dimensions: 24'3" x 11'3"
Area: 184 sq. ft
Counted as living area: Yes

Heated: Yes
Finished: Yes
Enclosed: Yes
Contiguous: Yes
Permitted: Yes
Wet space: No
Addition: No
Conversion: No

320 Park Street South, Old Pasadena, St. Petersburg, Pinellas
County, Florida, United States, 33707

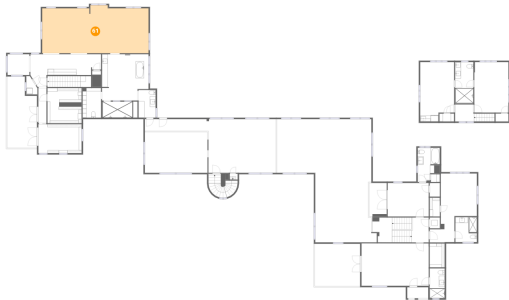
60 Floor 2 - Bath



Dimensions: 7'7" x 11'9"
Area: 78 sq. ft
Counted as living area: Yes

Heated: Yes
Finished: Yes
Enclosed: Yes
Contiguous: Yes
Permitted: Yes
Wet space: Yes
Addition: No
Conversion: No

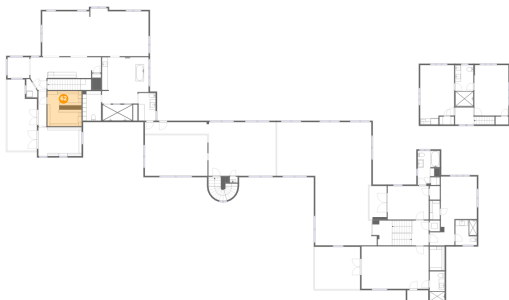
61 Floor 2 - Primary Bedroom



Dimensions: 36'6" x 16'6"
Area: 568 sq. ft
Counted as living area: Yes

Heated: Yes
Finished: Yes
Enclosed: Yes
Contiguous: Yes
Permitted: Yes
Wet space: No
Addition: No
Conversion: No

62 Floor 2 - W.I.C.

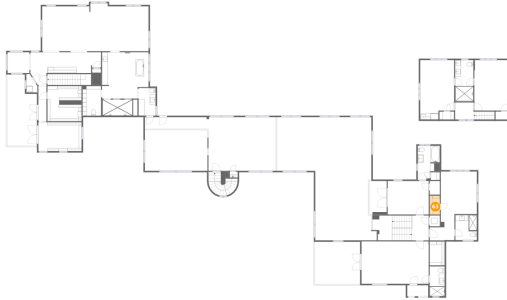


Dimensions: 11'9" x 12'1"
Area: 142 sq. ft
Counted as living area: Yes

Heated: Yes
Finished: Yes
Enclosed: Yes
Contiguous: Yes
Permitted: Yes
Wet space: No
Addition: No
Conversion: No

320 Park Street South, Old Pasadena, St. Petersburg, Pinellas
County, Florida, United States, 33707

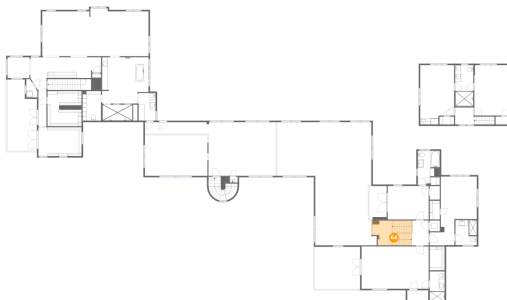
63 Floor 2 - W.I.C.



Dimensions: 3'6" x 6'6"
Area: 23 sq. ft
Counted as living area: Yes

Heated: Yes
Finished: Yes
Enclosed: Yes
Contiguous: Yes
Permitted: Yes
Wet space: No
Addition: No
Conversion: No

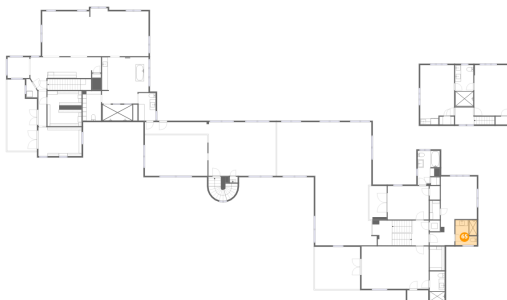
64 Floor 2 - Stairwell



Dimensions: 13'6" x 8'6"
Area: 112 sq. ft
Counted as living area: No

Heated: No
Finished: No
Enclosed: No
Contiguous: Yes
Permitted: No
Wet space: No
Addition: No
Conversion: No

65 Floor 2 - Bath

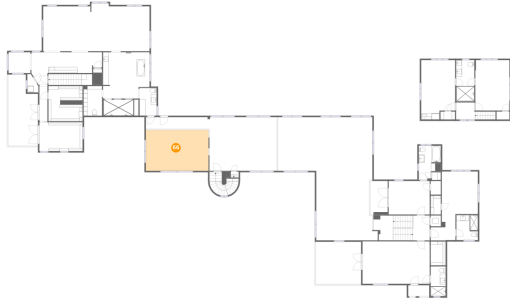


Dimensions: 7'4" x 8'7"
Area: 62 sq. ft
Counted as living area: Yes

Heated: Yes
Finished: Yes
Enclosed: Yes
Contiguous: Yes
Permitted: Yes
Wet space: Yes
Addition: No
Conversion: No

320 Park Street South, Old Pasadena, St. Petersburg, Pinellas
County, Florida, United States, 33707

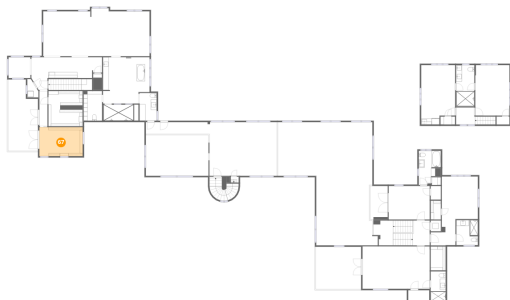
66 Floor 2 - Open To Below



Dimensions: 21'6" x 13'11"
Area: 300 sq. ft
Counted as living area: No

Heated: No
Finished: No
Enclosed: No
Contiguous: Yes
Permitted: No
Wet space: No
Addition: No
Conversion: No

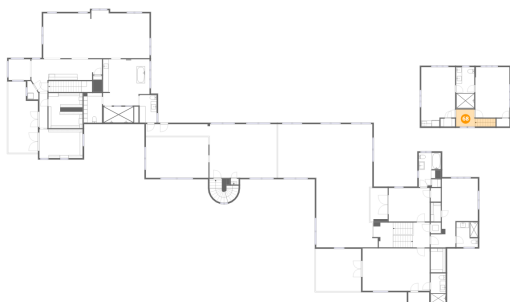
67 Floor 2 - W.I.C.



Dimensions: 14'10" x 9'11"
Area: 148 sq. ft
Counted as living area: Yes

Heated: Yes
Finished: Yes
Enclosed: Yes
Contiguous: Yes
Permitted: Yes
Wet space: No
Addition: No
Conversion: No

68 Floor 2 - Hall

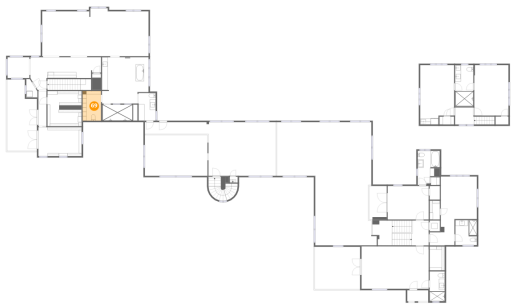


Dimensions: 13'7" x 5'10"
Area: 56 sq. ft
Counted as living area: Yes

Heated: Yes
Finished: Yes
Enclosed: Yes
Contiguous: Yes
Permitted: Yes
Wet space: No
Addition: No
Conversion: No

320 Park Street South, Old Pasadena, St. Petersburg, Pinellas
County, Florida, United States, 33707

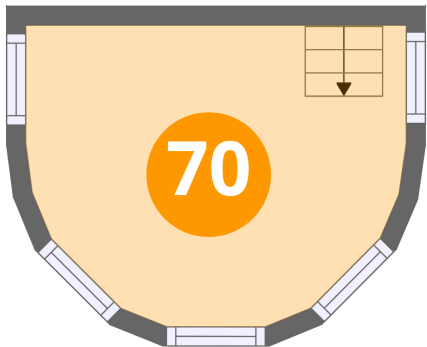
69 Floor 2 - Bath



Dimensions: 6'4" x 10'2"
Area: 64 sq. ft
Counted as living area: Yes

Heated: Yes
Finished: Yes
Enclosed: Yes
Contiguous: Yes
Permitted: Yes
Wet space: Yes
Addition: No
Conversion: No

70 Floor 3 - Room



Dimensions: 10'0" x 7'11"
Area: 69 sq. ft
Counted as living area: Yes

Heated: Yes
Finished: Yes
Enclosed: Yes
Contiguous: Yes
Permitted: Yes
Wet space: No
Addition: No
Conversion: No