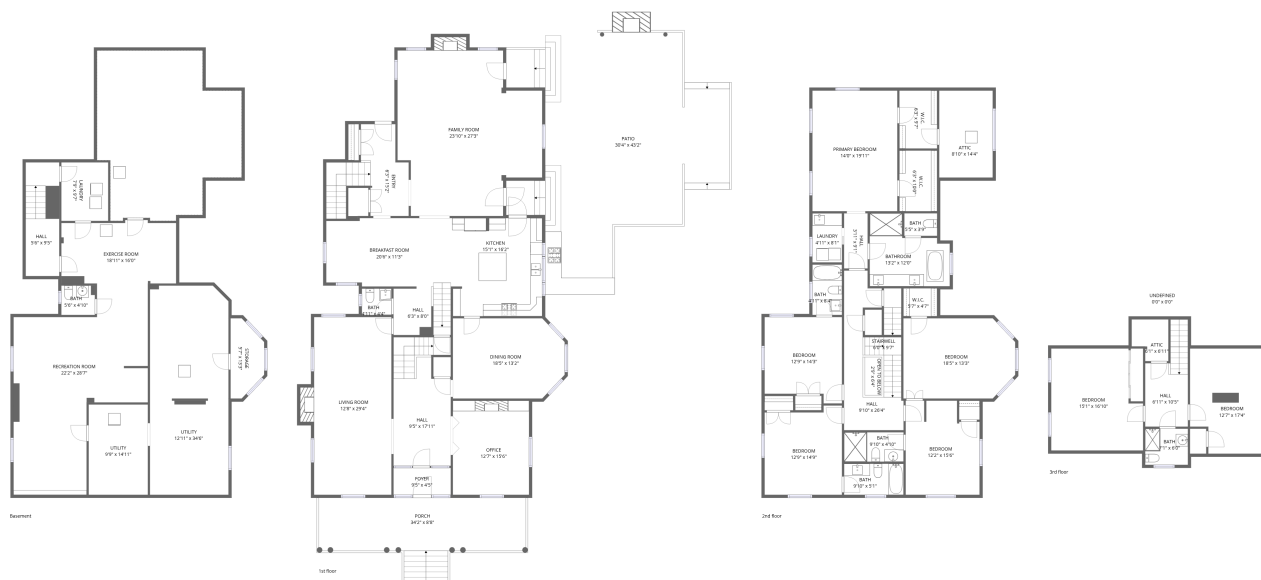


Home data report

307 Abbottsford Road, Kenilworth, Cook County, Illinois, United States, 60043



Total Area: 5797 sq. ft

Basement: 976 sq. ft, 1st Floor: 2387 sq. ft, 2nd Floor: 1806 sq. ft, 3rd Floor: 628 sq. ft
Excluded: Utility 598 sq. ft, Storage 59 sq. ft, Low ceiling 583 sq. ft, Porch 336 sq. ft, Patio 1082 sq. ft, Fireplace 30 sq. ft, Undefined 23 sq. ft, Stairwell 40 sq. ft, Open to below 18 sq. ft, Attic 132 sq. ft, Walls: 426 sq. ft

Property summary

 **4** Floors

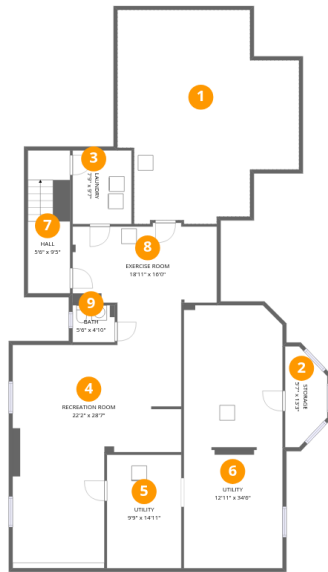
 **7** Bedrooms

 **5** Bathrooms

 **2** Half baths

Home data report

307 Abbottsford Road, Kenilworth, Cook County, Illinois, United States, 60043



Room dimensions

Floor 1 Below grade

Total:976sqft

Excluded: 1210sqft

#		Dimensions	sqft	Counted as living area
1	Crawl Space	23'10" x 28'1"	669 sq. ft	No
2	Storage	5'7" x 13'3"	73 sq. ft	No
3	Laundry	7'9" x 9'7"	74 sq. ft	Yes
4	Recreation Room	22'2" x 28'7"	633 sq. ft	Yes
5	Utility	9'9" x 14'11"	145 sq. ft	No
6	Utility	12'11" x 34'6"	447 sq. ft	No
7	Hall	5'6" x 9'5"	52 sq. ft	Yes
8	Exercise Room	18'11" x 16'0"	303 sq. ft	Yes
9	Bath	5'6" x 4'10"	27 sq. ft	Yes

Home data report

307 Abbottsford Road, Kenilworth, Cook County, Illinois, United States, 60043



Room dimensions

Floor 2

Total:2387sqft

Excluded: 1448sqft

#		Dimensions	sqft	Counted as living area
10	Dining Room	18'5" x 13'2"	243 sq. ft	Yes
11	Foyer	9'5" x 4'5"	42 sq. ft	Yes
12	Hall	9'5" x 17'11"	169 sq. ft	Yes
13	Patio	30'4" x 43'2"	1311 sq. ft	No
14	Porch	34'2" x 8'8"	297 sq. ft	No
15	Bath	4'11" x 4'4"	21 sq. ft	Yes
16	Living Room	12'8" x 29'4"	371 sq. ft	Yes
17	Family Room	23'10" x 27'3"	650 sq. ft	Yes
18	Hall	6'3" x 8'0"	50 sq. ft	Yes
19	Breakfast Room	20'6" x 11'3"	231 sq. ft	Yes
20	Office	12'7" x 15'6"	195 sq. ft	Yes

Home data report

307 Abbottsford Road, Kenilworth, Cook County, Illinois, United States, 60043

#		Dimensions	sqft	Counted as living area
21	Kitchen	15'1" x 16'2"	244 sq. ft	Yes
22	Entry	6'3" x 15'2"	95 sq. ft	Yes

307 Abbottsford Road, Kenilworth, Cook County, Illinois, United States, 60043



Room dimensions

Floor 3

Total:1806sqft Excluded: 207sqft

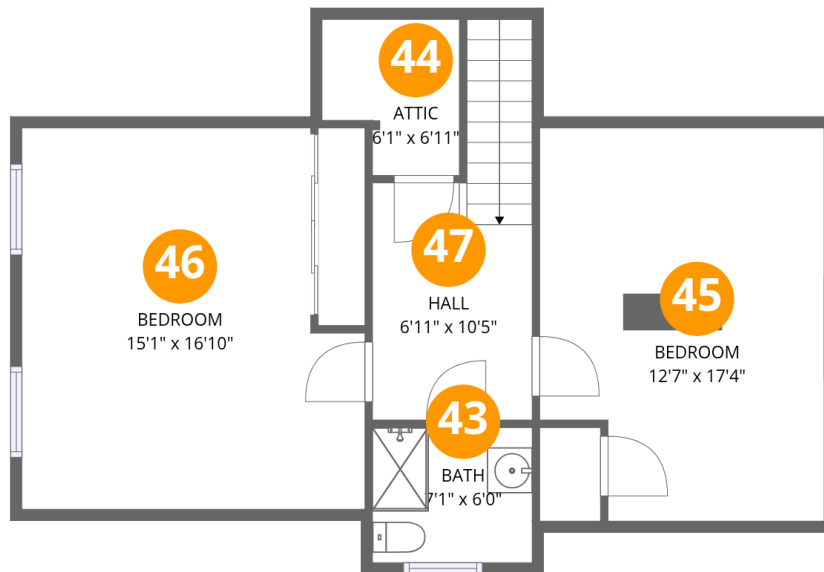
#		Dimensions	sqft	Counted as living area
23	Bathroom	13'2" x 12'0"	158 sq. ft	Yes
24	W.I.C.	6'3" x 9'7"	59 sq. ft	Yes
25	W.I.C.	5'7" x 4'7"	26 sq. ft	Yes
26	Hall	3'11" x 9'1"	35 sq. ft	Yes
27	Bath	4'11" x 8'4"	41 sq. ft	Yes
28	Bath	5'5" x 3'9"	20 sq. ft	Yes
29	Undefined	0'0" x 0'0"		No
30	Bath	9'10" x 4'10"	48 sq. ft	Yes
31	Stairwell	6'0" x 9'7"	58 sq. ft	No
32	Bedroom	12'9" x 14'9"	188 sq. ft	Yes
33	Primary Bedroom	14'0" x 19'11"	278 sq. ft	Yes

Home data report

307 Abbottsford Road, Kenilworth, Cook County, Illinois, United States, 60043

#		Dimensions	sqft	Counted as living area
34	Bedroom	12'2" x 15'6"	189 sq. ft	Yes
35	Open To Below	2'9" x 6'4"	18 sq. ft	No
36	Attic	8'10" x 14'4"	127 sq. ft	No
37	Bedroom	12'9" x 14'3"	181 sq. ft	Yes
38	Bedroom	18'5" x 13'3"	244 sq. ft	Yes
39	W.I.C.	6'3" x 10'0"	62 sq. ft	Yes
40	Hall	9'10" x 26'4"	258 sq. ft	Yes
41	Laundry	4'11" x 8'1"	40 sq. ft	Yes
42	Bath	9'10" x 5'1"	50 sq. ft	Yes

307 Abbottsford Road, Kenilworth, Cook County, Illinois, United States, 60043



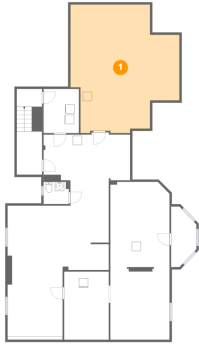
Room dimensions

Floor 4

Total:628sqft Excluded: 36sqft

#		Dimensions	sqft	Counted as living area
43	Bath	7'1" x 6'0"	42 sq. ft	Yes
44	Attic	6'1" x 6'11"	42 sq. ft	No
45	Bedroom	12'7" x 17'4"	218 sq. ft	Yes
46	Bedroom	15'1" x 16'10"	254 sq. ft	Yes
47	Hall	6'11" x 10'5"	72 sq. ft	Yes

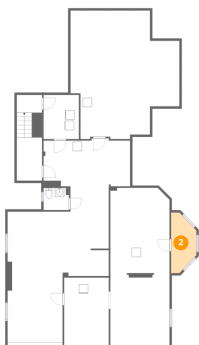
1 Floor 1 - Crawl Space



Dimensions: 23'10" x 28'1"
Area: 669 sq. ft
Counted as living area: No

Heated: No
Finished: No
Enclosed: No
Contiguous: Yes
Permitted: No
Wet space: No
Addition: No
Conversion: No

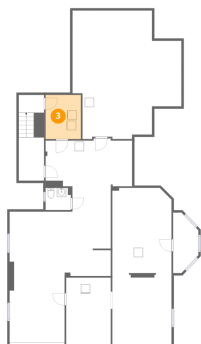
2 Floor 1 - Storage



Dimensions: 5'7" x 13'3"
Area: 73 sq. ft
Counted as living area: No

Heated: No
Finished: No
Enclosed: No
Contiguous: Yes
Permitted: Yes
Wet space: No
Addition: No
Conversion: No

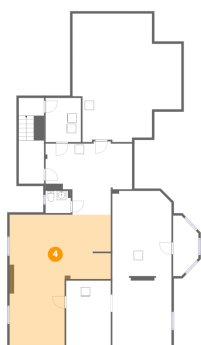
3 Floor 1 - Laundry



Dimensions: 7'9" x 9'7"
Area: 74 sq. ft
Counted as living area: Yes

Heated: Yes
Finished: Yes
Enclosed: Yes
Contiguous: Yes
Permitted: Yes
Wet space: No
Addition: No
Conversion: No

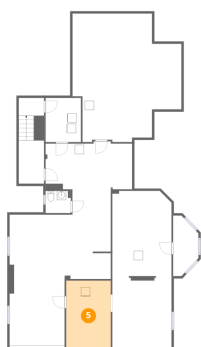
4 Floor 1 - Recreation Room



Dimensions: 22'2" x 28'7"
Area: 633 sq. ft
Counted as living area: Yes

Heated: Yes
Finished: Yes
Enclosed: Yes
Contiguous: Yes
Permitted: Yes
Wet space: No
Addition: No
Conversion: No

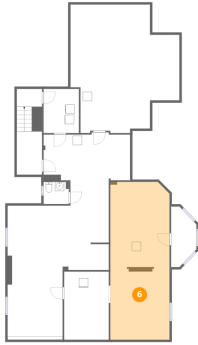
5 Floor 1 - Utility



Dimensions: 9'9" x 14'11"
Area: 145 sq. ft
Counted as living area: No

Heated: Yes
Finished: No
Enclosed: Yes
Contiguous: Yes
Permitted: Yes
Wet space: No
Addition: No
Conversion: No

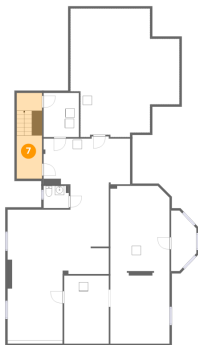
6 Floor 1 - Utility



Dimensions: 12'11" x 34'6"
Area: 447 sq. ft
Counted as living area: No

Heated: Yes
Finished: No
Enclosed: Yes
Contiguous: Yes
Permitted: Yes
Wet space: No
Addition: No
Conversion: No

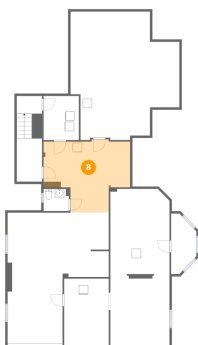
7 Floor 1 - Hall



Dimensions: 5'6" x 9'5"
Area: 52 sq. ft
Counted as living area: Yes

Heated: Yes
Finished: Yes
Enclosed: Yes
Contiguous: Yes
Permitted: Yes
Wet space: No
Addition: No
Conversion: No

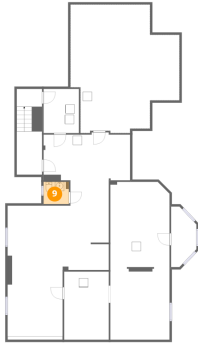
8 Floor 1 - Exercise Room



Dimensions: 18'11" x 16'0"
Area: 303 sq. ft
Counted as living area: Yes

Heated: Yes
Finished: Yes
Enclosed: Yes
Contiguous: Yes
Permitted: Yes
Wet space: No
Addition: No
Conversion: No

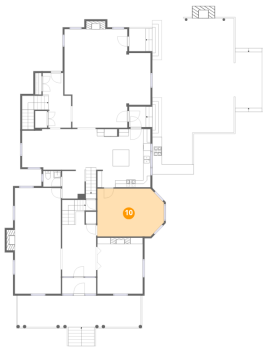
9 Floor 1 - Bath



Dimensions: 5'6" x 4'10"
Area: 27 sq. ft
Counted as living area: Yes

Heated: Yes
Finished: Yes
Enclosed: Yes
Contiguous: Yes
Permitted: Yes
Wet space: Yes
Addition: No
Conversion: No

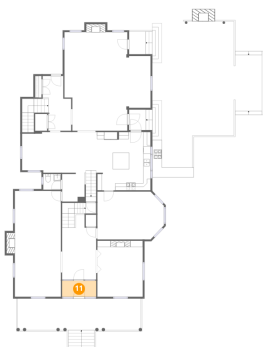
10 Floor 2 - Dining Room



Dimensions: 18'5" x 13'2"
Area: 243 sq. ft
Counted as living area: Yes

Heated: Yes
Finished: Yes
Enclosed: Yes
Contiguous: Yes
Permitted: Yes
Wet space: No
Addition: No
Conversion: No

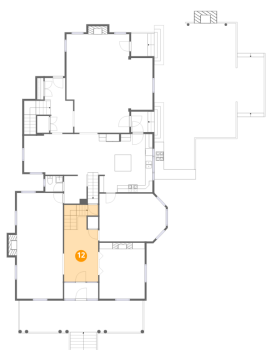
11 Floor 2 - Foyer



Dimensions: 9'5" x 4'5"
Area: 42 sq. ft
Counted as living area: Yes

Heated: Yes
Finished: Yes
Enclosed: Yes
Contiguous: Yes
Permitted: Yes
Wet space: No
Addition: No
Conversion: No

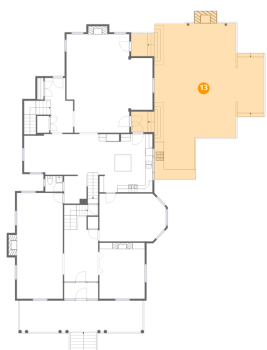
12 Floor 2 - Hall



Dimensions: 9'5" x 17'11"
Area: 169 sq. ft
Counted as living area: Yes

Heated: Yes
Finished: Yes
Enclosed: Yes
Contiguous: Yes
Permitted: Yes
Wet space: No
Addition: No
Conversion: No

13 Floor 2 - Patio



Dimensions: 30'4" x 43'2"
Area: 1311 sq. ft
Counted as living area: No

Heated: No
Finished: No
Enclosed: No
Contiguous: Yes
Permitted: Yes
Wet space: No
Addition: No
Conversion: No

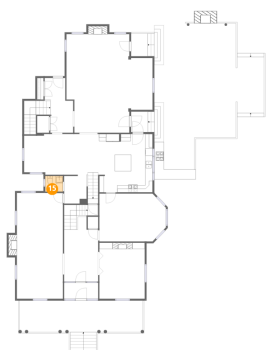
14 Floor 2 - Porch



Dimensions: 34'2" x 8'8"
Area: 297 sq. ft
Counted as living area: No

Heated: No
Finished: No
Enclosed: No
Contiguous: Yes
Permitted: Yes
Wet space: No
Addition: No
Conversion: No

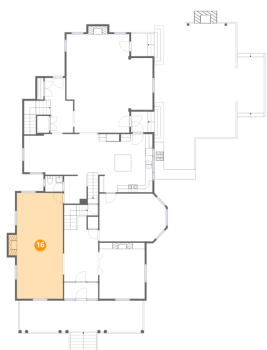
15 Floor 2 - Bath



Dimensions: 4'11" x 4'4"
Area: 21 sq. ft
Counted as living area: Yes

Heated: Yes
Finished: Yes
Enclosed: Yes
Contiguous: Yes
Permitted: Yes
Wet space: Yes
Addition: No
Conversion: No

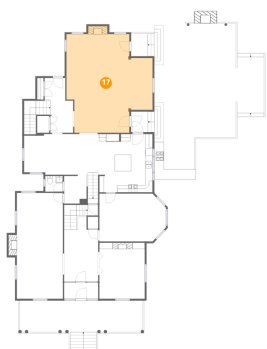
16 Floor 2 - Living Room



Dimensions: 12'8" x 29'4"
Area: 371 sq. ft
Counted as living area: Yes

Heated: Yes
Finished: Yes
Enclosed: Yes
Contiguous: Yes
Permitted: Yes
Wet space: No
Addition: No
Conversion: No

17 Floor 2 - Family Room



Dimensions: 23'10" x 27'3"
Area: 650 sq. ft
Counted as living area: Yes

Heated: Yes
Finished: Yes
Enclosed: Yes
Contiguous: Yes
Permitted: Yes
Wet space: No
Addition: No
Conversion: No

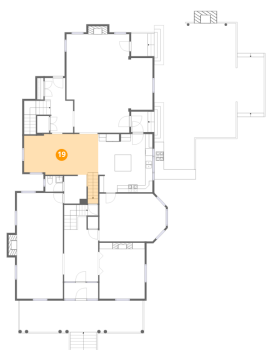
18 Floor 2 - Hall



Dimensions: 6'3" x 8'0"
Area: 50 sq. ft
Counted as living area: Yes

Heated: Yes
Finished: Yes
Enclosed: Yes
Contiguous: Yes
Permitted: Yes
Wet space: No
Addition: No
Conversion: No

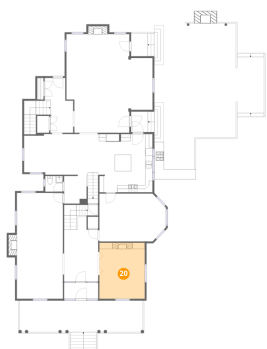
19 Floor 2 - Breakfast Room



Dimensions: 20'6" x 11'3"
Area: 231 sq. ft
Counted as living area: Yes

Heated: Yes
Finished: Yes
Enclosed: Yes
Contiguous: Yes
Permitted: Yes
Wet space: No
Addition: No
Conversion: No

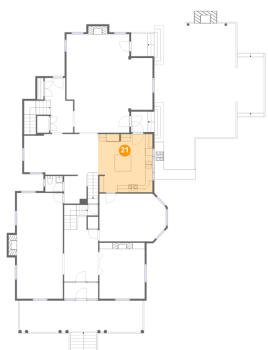
20 Floor 2 - Office



Dimensions: 12'7" x 15'6"
Area: 195 sq. ft
Counted as living area: Yes

Heated: Yes
Finished: Yes
Enclosed: Yes
Contiguous: Yes
Permitted: Yes
Wet space: No
Addition: No
Conversion: No

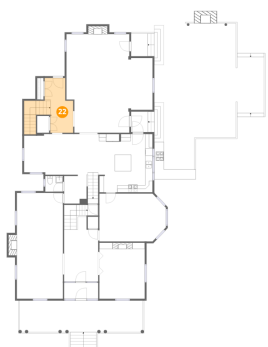
21 Floor 2 - Kitchen



Dimensions: 15'1" x 16'2"
Area: 244 sq. ft
Counted as living area: Yes

Heated: Yes
Finished: Yes
Enclosed: Yes
Contiguous: Yes
Permitted: Yes
Wet space: No
Addition: No
Conversion: No

22 Floor 2 - Entry



Dimensions: 6'3" x 15'2"
Area: 95 sq. ft
Counted as living area: Yes

Heated: Yes
Finished: Yes
Enclosed: Yes
Contiguous: Yes
Permitted: Yes
Wet space: No
Addition: No
Conversion: No

23 Floor 3 - Bathroom



Dimensions: 13'2" x 12'0"
Area: 158 sq. ft
Counted as living area: Yes

Heated: Yes
Finished: Yes
Enclosed: Yes
Contiguous: Yes
Permitted: Yes
Wet space: Yes
Addition: No
Conversion: No

24 Floor 3 - W.I.C.



Dimensions: 6'3" x 9'7"
Area: 59 sq. ft
Counted as living area: Yes

Heated: Yes
Finished: Yes
Enclosed: Yes
Contiguous: Yes
Permitted: Yes
Wet space: No
Addition: No
Conversion: No

25 Floor 3 - W.I.C.



Dimensions: 5'7" x 4'7"
Area: 26 sq. ft
Counted as living area: Yes

Heated: Yes
Finished: Yes
Enclosed: Yes
Contiguous: Yes
Permitted: Yes
Wet space: No
Addition: No
Conversion: No

26 Floor 3 - Hall



Dimensions: 3'11" x 9'1"
Area: 35 sq. ft
Counted as living area: Yes

Heated: Yes
Finished: Yes
Enclosed: Yes
Contiguous: Yes
Permitted: Yes
Wet space: No
Addition: No
Conversion: No

27 Floor 3 - Bath



Dimensions: 4'11" x 8'4"
Area: 41 sq. ft
Counted as living area: Yes

Heated: Yes
Finished: Yes
Enclosed: Yes
Contiguous: Yes
Permitted: Yes
Wet space: Yes
Addition: No
Conversion: No

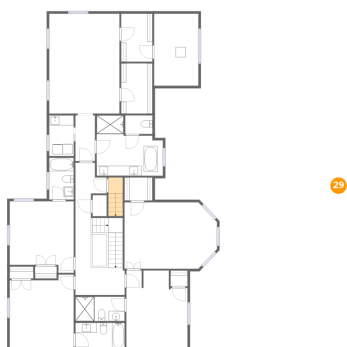
28 Floor 3 - Bath



Dimensions: 5'5" x 3'9"
Area: 20 sq. ft
Counted as living area: Yes

Heated: Yes
Finished: Yes
Enclosed: Yes
Contiguous: Yes
Permitted: Yes
Wet space: Yes
Addition: No
Conversion: No

29 Floor 3 - Undefined



Dimensions: 0'0" x 0'0"
Area:
Counted as living area: No

Heated: Yes
Finished: Yes
Enclosed: Yes
Contiguous: Yes
Permitted: Yes
Wet space: No
Addition: No
Conversion: No

30 Floor 3 - Bath



Dimensions: 9'10" x 4'10"
Area: 48 sq. ft
Counted as living area: Yes

Heated: Yes
Finished: Yes
Enclosed: Yes
Contiguous: Yes
Permitted: Yes
Wet space: Yes
Addition: No
Conversion: No

31 Floor 3 - Stairwell



Dimensions: 6'0" x 9'7"
Area: 58 sq. ft
Counted as living area: No

Heated: No
Finished: No
Enclosed: No
Contiguous: Yes
Permitted: No
Wet space: No
Addition: No
Conversion: No

32 Floor 3 - Bedroom



Dimensions: 12'9" x 14'9"
Area: 188 sq. ft
Counted as living area: Yes

Heated: Yes
Finished: Yes
Enclosed: Yes
Contiguous: Yes
Permitted: Yes
Wet space: No
Addition: No
Conversion: No

33 Floor 3 - Primary Bedroom



Dimensions: 14'0" x 19'11"
Area: 278 sq. ft
Counted as living area: Yes

Heated: Yes
Finished: Yes
Enclosed: Yes
Contiguous: Yes
Permitted: Yes
Wet space: No
Addition: No
Conversion: No

34 Floor 3 - Bedroom



Dimensions: 12'2" x 15'6"
Area: 189 sq. ft
Counted as living area: Yes

Heated: Yes
Finished: Yes
Enclosed: Yes
Contiguous: Yes
Permitted: Yes
Wet space: No
Addition: No
Conversion: No

35 Floor 3 - Open To Below



Dimensions: 2'9" x 6'4"
Area: 18 sq. ft
Counted as living area: No

Heated: No
Finished: No
Enclosed: No
Contiguous: Yes
Permitted: No
Wet space: No
Addition: No
Conversion: No

36 Floor 3 - Attic



Dimensions: 8'10" x 14'4"
Area: 127 sq. ft
Counted as living area: No

Heated: No
Finished: No
Enclosed: Yes
Contiguous: Yes
Permitted: Yes
Wet space: No
Addition: No
Conversion: No

37 Floor 3 - Bedroom



Dimensions: 12'9" x 14'3"
Area: 181 sq. ft
Counted as living area: Yes

Heated: Yes
Finished: Yes
Enclosed: Yes
Contiguous: Yes
Permitted: Yes
Wet space: No
Addition: No
Conversion: No

38 Floor 3 - Bedroom



Dimensions: 18'5" x 13'3"
Area: 244 sq. ft
Counted as living area: Yes

Heated: Yes
Finished: Yes
Enclosed: Yes
Contiguous: Yes
Permitted: Yes
Wet space: No
Addition: No
Conversion: No

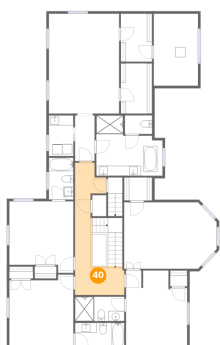
39 Floor 3 - W.I.C.



Dimensions: 6'3" x 10'0"
Area: 62 sq. ft
Counted as living area: Yes

Heated: Yes
Finished: Yes
Enclosed: Yes
Contiguous: Yes
Permitted: Yes
Wet space: No
Addition: No
Conversion: No

40 Floor 3 - Hall



Dimensions: 9'10" x 26'4"
Area: 258 sq. ft
Counted as living area: Yes

Heated: Yes
Finished: Yes
Enclosed: Yes
Contiguous: Yes
Permitted: Yes
Wet space: No
Addition: No
Conversion: No

41 Floor 3 - Laundry



Dimensions: 4'11" x 8'1"
Area: 40 sq. ft
Counted as living area: Yes

Heated: Yes
Finished: Yes
Enclosed: Yes
Contiguous: Yes
Permitted: Yes
Wet space: No
Addition: No
Conversion: No

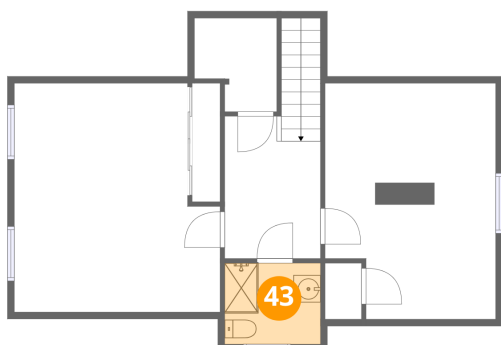
42 Floor 3 - Bath



Dimensions: 9'10" x 5'1"
Area: 50 sq. ft
Counted as living area: Yes

Heated: Yes
Finished: Yes
Enclosed: Yes
Contiguous: Yes
Permitted: Yes
Wet space: Yes
Addition: No
Conversion: No

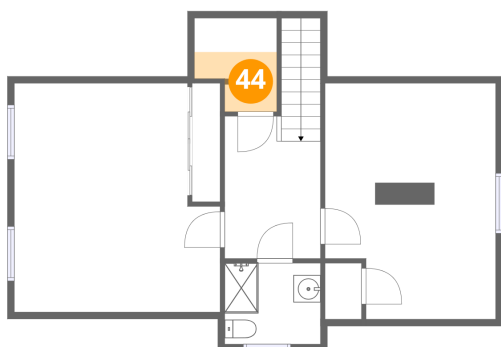
43 Floor 4 - Bath



Dimensions: 7'1" x 6'0"
Area: 42 sq. ft
Counted as living area: Yes

Heated: Yes
Finished: Yes
Enclosed: Yes
Contiguous: Yes
Permitted: Yes
Wet space: Yes
Addition: No
Conversion: No

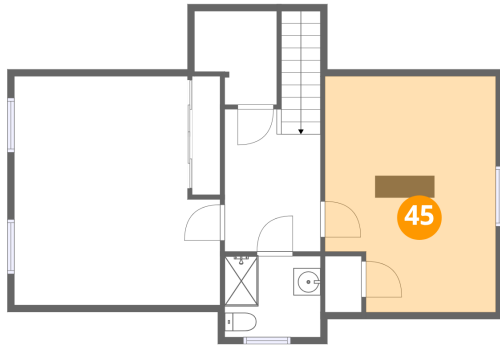
44 Floor 4 - Attic



Dimensions: 6'1" x 6'11"
Area: 42 sq. ft
Counted as living area: No

Heated: No
Finished: No
Enclosed: Yes
Contiguous: Yes
Permitted: Yes
Wet space: No
Addition: No
Conversion: No

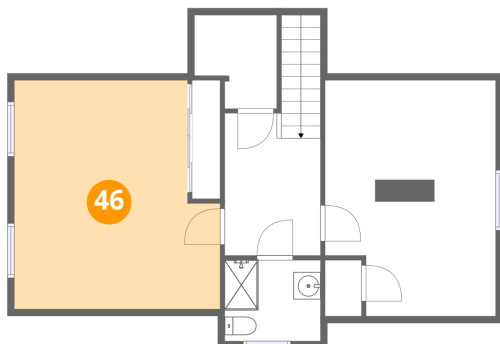
45 Floor 4 - Bedroom



Dimensions: 12'7" x 17'4"
Area: 218 sq. ft
Counted as living area: Yes

Heated: Yes
Finished: Yes
Enclosed: Yes
Contiguous: Yes
Permitted: Yes
Wet space: No
Addition: No
Conversion: No

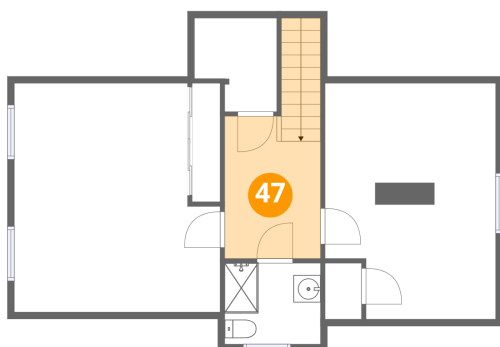
46 Floor 4 - Bedroom



Dimensions: 15'1" x 16'10"
Area: 254 sq. ft
Counted as living area: Yes

Heated: Yes
Finished: Yes
Enclosed: Yes
Contiguous: Yes
Permitted: Yes
Wet space: No
Addition: No
Conversion: No

47 Floor 4 - Hall



Dimensions: 6'11" x 10'5"
Area: 72 sq. ft
Counted as living area: Yes

Heated: Yes
Finished: Yes
Enclosed: Yes
Contiguous: Yes
Permitted: Yes
Wet space: No
Addition: No
Conversion: No