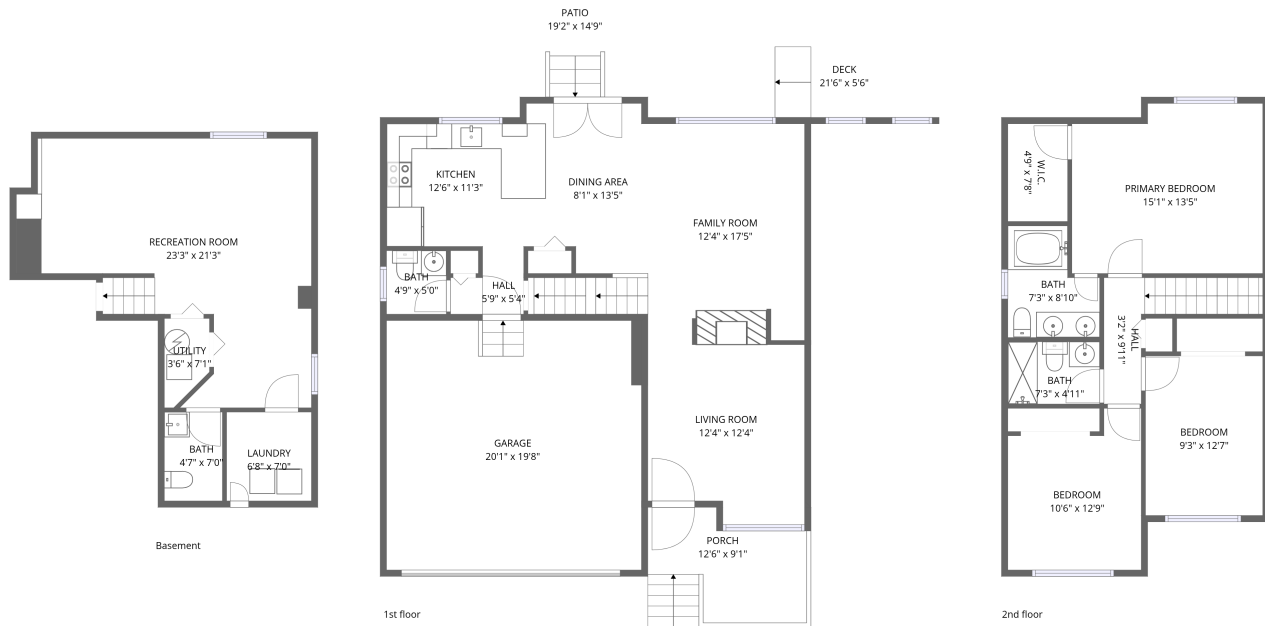


Home data report

9619 Newcastle Dr, Highlands Ranch, CO, US



Total Area: 1817 sq. ft

Basement: 444 sq. ft, 1st Floor: 692 sq. ft, 2nd Floor: 681 sq. ft

Excluded: Utility 21 sq. ft, Garage 396 sq. ft, Porch 84 sq. ft, Patio 240 sq. ft, Deck 141 sq. ft, Embedded window 14 sq. ft, Walls: 204 sq. ft

Property summary

 **3** Floors

 **3** Bedrooms

 **2** Bathrooms

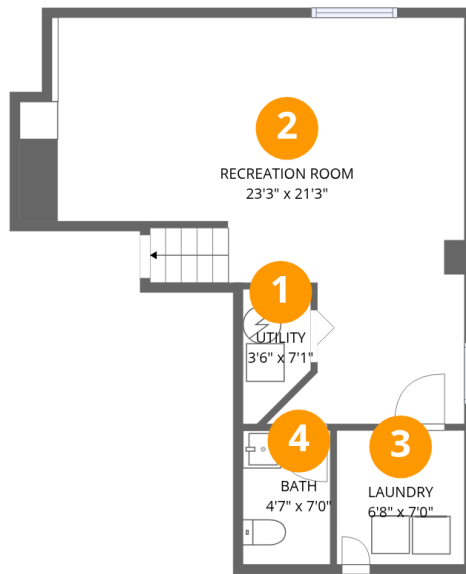
Home data report

9619 Newcastle Dr,Highlands Ranch,CO,US

 **2**
Half baths

 **1**
Garages

9619 Newcastle Dr,Highlands Ranch,CO,US



Room dimensions

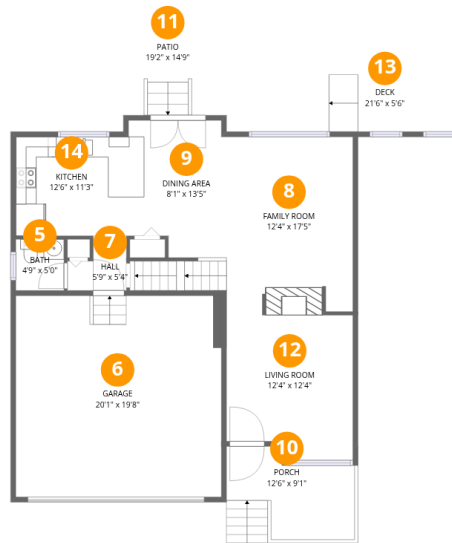
Floor 1 Below grade

Total:444sqft Excluded: 21sqft

| # | | Dimensions | sqft | Counted as living area |
|---|-----------------|---------------|------------|------------------------|
| 1 | Utility | 3'6" x 7'1" | 25 sq. ft | No |
| 2 | Recreation Room | 23'3" x 21'3" | 493 sq. ft | Yes |
| 3 | Laundry | 6'8" x 7'0" | 47 sq. ft | Yes |
| 4 | Bath | 4'7" x 7'0" | 32 sq. ft | Yes |

Home data report

9619 Newcastle Dr, Highlands Ranch, CO, US



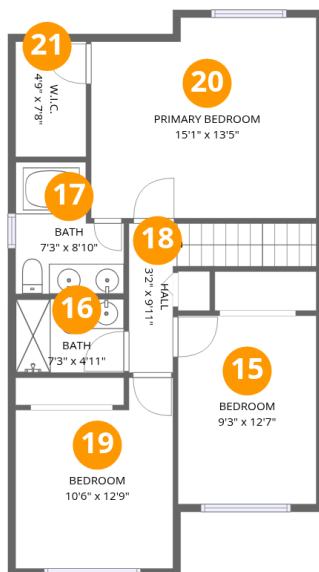
Room dimensions

Floor 2

Total: 692 sqft

Excluded: 875 sqft

| # | | Dimensions | sqft | Counted as living area |
|----|-------------|---------------|------------|------------------------|
| 5 | Bath | 4'9" x 5'0" | 24 sq. ft | Yes |
| 6 | Garage | 20'1" x 19'8" | 395 sq. ft | No |
| 7 | Hall | 5'9" x 5'4" | 31 sq. ft | Yes |
| 8 | Family Room | 12'4" x 17'5" | 215 sq. ft | Yes |
| 9 | Dining Area | 8'1" x 13'5" | 108 sq. ft | Yes |
| 10 | Porch | 12'6" x 9'1" | 114 sq. ft | No |
| 11 | Patio | 19'2" x 14'9" | 282 sq. ft | No |
| 12 | Living Room | 12'4" x 12'4" | 152 sq. ft | Yes |
| 13 | Deck | 21'6" x 5'6" | 118 sq. ft | No |
| 14 | Kitchen | 12'6" x 11'3" | 141 sq. ft | Yes |



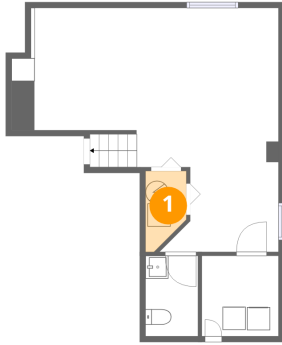
Room dimensions

Floor 3

Total:681sqft Excluded: 0sqft

| # | | Dimensions | sqft | Counted as living area |
|----|-----------------|---------------|------------|------------------------|
| 15 | Bedroom | 9'3" x 12'7" | 116 sq. ft | Yes |
| 16 | Bath | 7'3" x 4'11" | 36 sq. ft | Yes |
| 17 | Bath | 7'3" x 8'10" | 64 sq. ft | Yes |
| 18 | Hall | 3'2" x 9'11" | 32 sq. ft | Yes |
| 19 | Bedroom | 10'6" x 12'9" | 134 sq. ft | Yes |
| 20 | Primary Bedroom | 15'1" x 13'5" | 202 sq. ft | Yes |
| 21 | W.I.C. | 4'9" x 7'8" | 36 sq. ft | Yes |

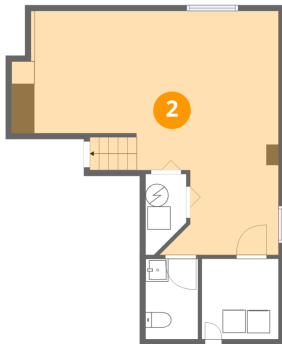
1 Floor 1 - Utility



Dimensions: 3'6" x 7'1"
Area: 25 sq. ft
Counted as living area: No

Heated: Yes
Finished: No
Enclosed: Yes
Contiguous: Yes
Permitted: Yes
Wet space: No
Addition: No
Conversion: No

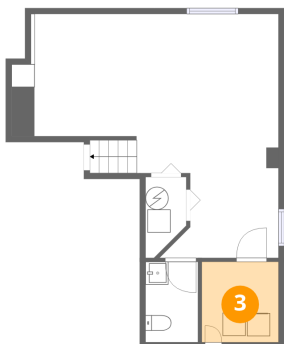
2 Floor 1 - Recreation Room



Dimensions: 23'3" x 21'3"
Area: 493 sq. ft
Counted as living area: Yes

Heated: Yes
Finished: Yes
Enclosed: Yes
Contiguous: Yes
Permitted: Yes
Wet space: No
Addition: No
Conversion: No

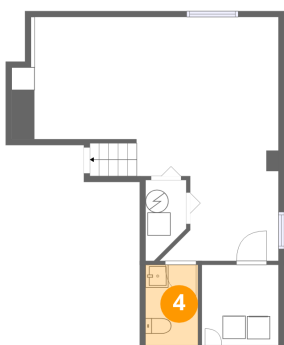
3 Floor 1 - Laundry



Dimensions: 6'8" x 7'0"
Area: 47 sq. ft
Counted as living area: Yes

Heated: Yes
Finished: Yes
Enclosed: Yes
Contiguous: Yes
Permitted: Yes
Wet space: No
Addition: No
Conversion: No

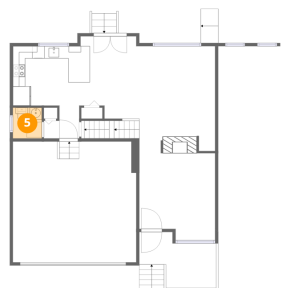
4 Floor 1 - Bath



Dimensions: 4'7" x 7'0"
Area: 32 sq. ft
Counted as living area: Yes

Heated: Yes
Finished: Yes
Enclosed: Yes
Contiguous: Yes
Permitted: Yes
Wet space: Yes
Addition: No
Conversion: No

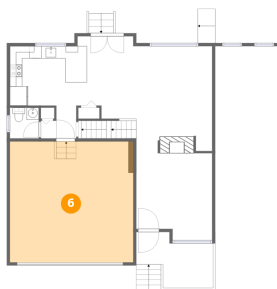
5 Floor 2 - Bath



Dimensions: 4'9" x 5'0"
Area: 24 sq. ft
Counted as living area: Yes

Heated: Yes
Finished: Yes
Enclosed: Yes
Contiguous: Yes
Permitted: Yes
Wet space: Yes
Addition: No
Conversion: No

6 Floor 2 - Garage



Dimensions: 20'1" x 19'8"
Area: 395 sq. ft
Counted as living area: No

Heated: No
Finished: No
Enclosed: Yes
Contiguous: Yes
Permitted: Yes
Wet space: No
Addition: No
Conversion: No

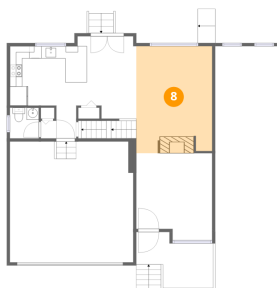
7 Floor 2 - Hall



Dimensions: 5'9" x 5'4"
Area: 31 sq. ft
Counted as living area: Yes

Heated: Yes
Finished: Yes
Enclosed: Yes
Contiguous: Yes
Permitted: Yes
Wet space: No
Addition: No
Conversion: No

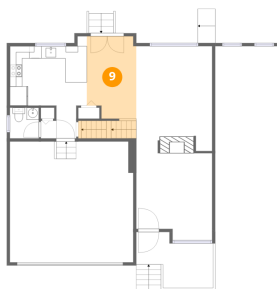
8 Floor 2 - Family Room



Dimensions: 12'4" x 17'5"
Area: 215 sq. ft
Counted as living area: Yes

Heated: Yes
Finished: Yes
Enclosed: Yes
Contiguous: Yes
Permitted: Yes
Wet space: No
Addition: No
Conversion: No

9 Floor 2 - Dining Area



Dimensions: 8'1" x 13'5"
Area: 108 sq. ft
Counted as living area: Yes

Heated: Yes
Finished: Yes
Enclosed: Yes
Contiguous: Yes
Permitted: Yes
Wet space: No
Addition: No
Conversion: No

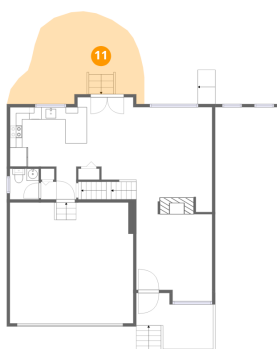
10 Floor 2 - Porch



Dimensions: 12'6" x 9'1"
Area: 114 sq. ft
Counted as living area: No

Heated: No
Finished: No
Enclosed: No
Contiguous: Yes
Permitted: Yes
Wet space: No
Addition: No
Conversion: No

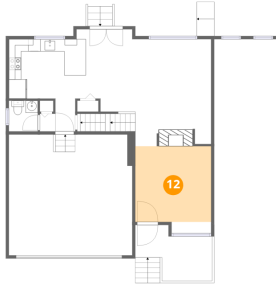
11 Floor 2 - Patio



Dimensions: 19'2" x 14'9"
Area: 282 sq. ft
Counted as living area: No

Heated: No
Finished: No
Enclosed: No
Contiguous: Yes
Permitted: Yes
Wet space: No
Addition: No
Conversion: No

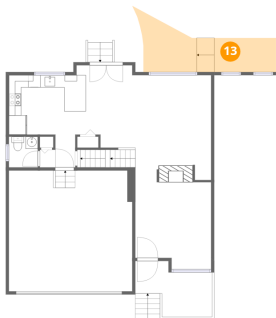
12 Floor 2 - Living Room



Dimensions: 12'4" x 12'4"
Area: 152 sq. ft
Counted as living area: Yes

Heated: Yes
Finished: Yes
Enclosed: Yes
Contiguous: Yes
Permitted: Yes
Wet space: No
Addition: No
Conversion: No

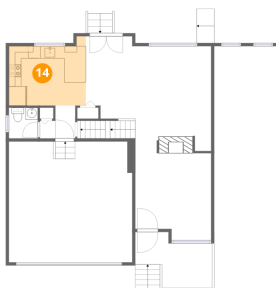
13 Floor 2 - Deck



Dimensions: 21'6" x 5'6"
Area: 118 sq. ft
Counted as living area: No

Heated: No
Finished: No
Enclosed: No
Contiguous: Yes
Permitted: Yes
Wet space: No
Addition: No
Conversion: No

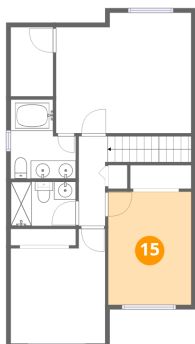
14 Floor 2 - Kitchen



Dimensions: 12'6" x 11'3"
Area: 141 sq. ft
Counted as living area: Yes

Heated: Yes
Finished: Yes
Enclosed: Yes
Contiguous: Yes
Permitted: Yes
Wet space: No
Addition: No
Conversion: No

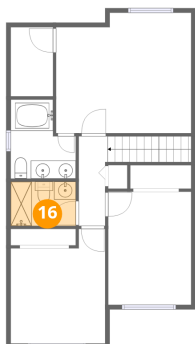
15 Floor 3 - Bedroom



Dimensions: 9'3" x 12'7"
Area: 116 sq. ft
Counted as living area: Yes

Heated: Yes
Finished: Yes
Enclosed: Yes
Contiguous: Yes
Permitted: Yes
Wet space: No
Addition: No
Conversion: No

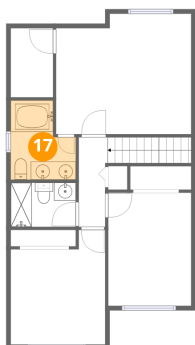
16 Floor 3 - Bath



Dimensions: 7'3" x 4'11"
Area: 36 sq. ft
Counted as living area: Yes

Heated: Yes
Finished: Yes
Enclosed: Yes
Contiguous: Yes
Permitted: Yes
Wet space: Yes
Addition: No
Conversion: No

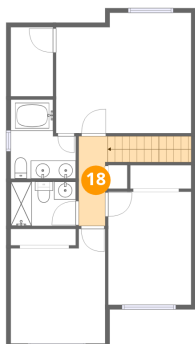
17 Floor 3 - Bath



Dimensions: 7'3" x 8'10"
Area: 64 sq. ft
Counted as living area: Yes

Heated: Yes
Finished: Yes
Enclosed: Yes
Contiguous: Yes
Permitted: Yes
Wet space: Yes
Addition: No
Conversion: No

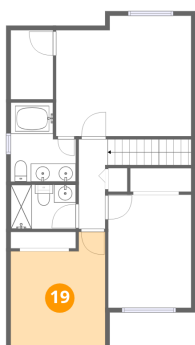
18 Floor 3 - Hall



Dimensions: 3'2" x 9'11"
Area: 32 sq. ft
Counted as living area: Yes

Heated: Yes
Finished: Yes
Enclosed: Yes
Contiguous: Yes
Permitted: Yes
Wet space: No
Addition: No
Conversion: No

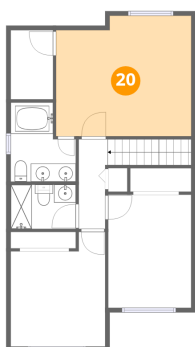
19 Floor 3 - Bedroom



Dimensions: 10'6" x 12'9"
Area: 134 sq. ft
Counted as living area: Yes

Heated: Yes
Finished: Yes
Enclosed: Yes
Contiguous: Yes
Permitted: Yes
Wet space: No
Addition: No
Conversion: No

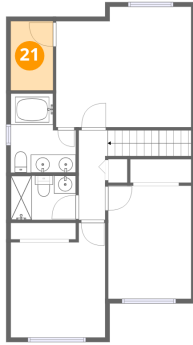
20 Floor 3 - Primary Bedroom



Dimensions: 15'1" x 13'5"
Area: 202 sq. ft
Counted as living area: Yes

Heated: Yes
Finished: Yes
Enclosed: Yes
Contiguous: Yes
Permitted: Yes
Wet space: No
Addition: No
Conversion: No

21 Floor 3 - W.I.C.



Dimensions: 4'9" x 7'8"
Area: 36 sq. ft
Counted as living area: Yes

Heated: Yes
Finished: Yes
Enclosed: Yes
Contiguous: Yes
Permitted: Yes
Wet space: No
Addition: No
Conversion: No