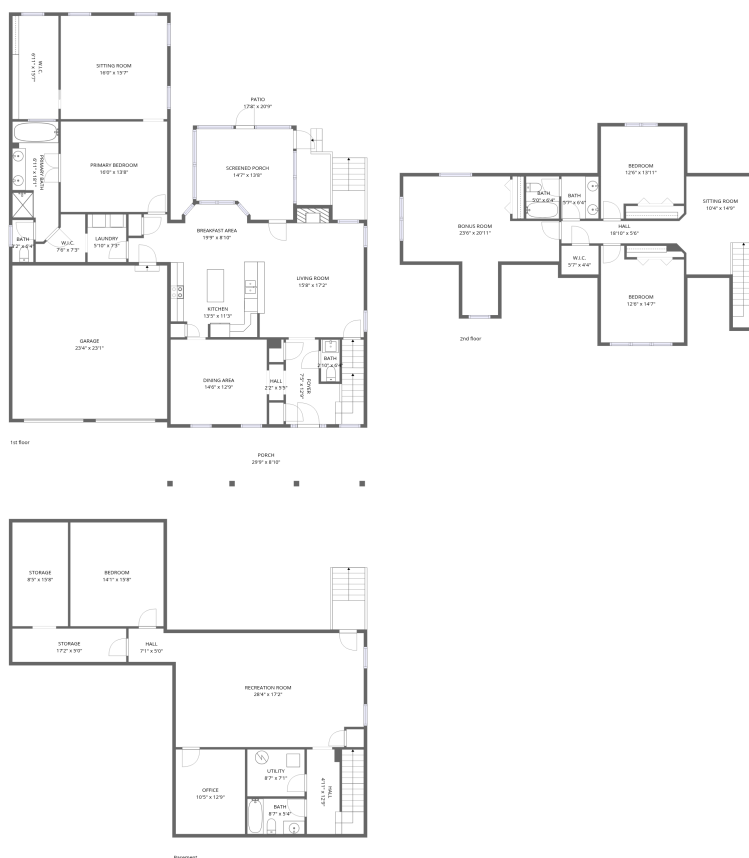


## Home data report

5244 Sundance Road, Cherokee Hills, Salem, Roanoke County, Virginia, United States, 24153



**Total Area: 3866 sq. ft**

Basement: 1062 sq. ft, 1st Floor: 1776 sq. ft, 2nd Floor: 1028 sq. ft

Excluded: Utility 61 sq. ft, Storage 220 sq. ft, Porch 263 sq. ft, Screened porch 179 sq. ft, Patio 258 sq. ft, Garage 539 sq. ft, Fireplace 13 sq. ft, Walls: 360 sq. ft

## Property summary

 **3** Floors

 **4** Bedrooms

 **3** Bathrooms

Home data report

**5244 Sundance Road, Cherokee Hills, Salem, Roanoke County,  
Virginia, United States, 24153**



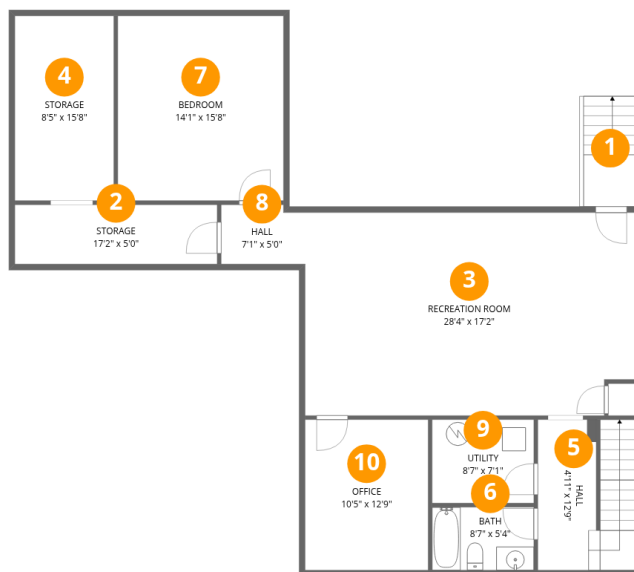
**1**  
Half baths



**1**  
Garages

Home data report

5244 Sundance Road, Cherokee Hills, Salem, Roanoke County, Virginia, United States, 24153



## Room dimensions

Floor 1 Below grade

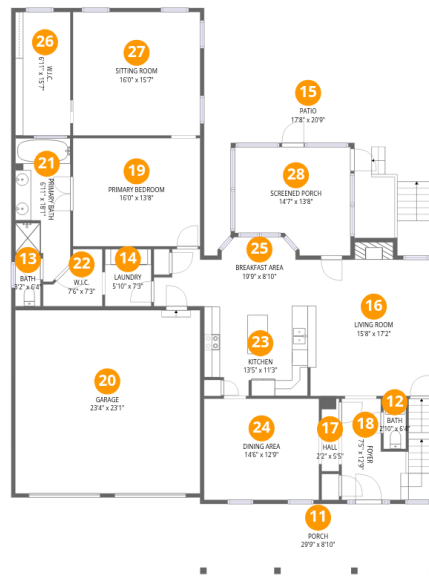
Total:1062sqft

Excluded: 281sqft

#		Dimensions	sqft	Counted as living area
1	Outdoor	5'0" x 4'5"	22 sq. ft	No
2	Storage	17'2" x 5'0"	86 sq. ft	No
3	Recreation Room	28'4" x 17'2"	487 sq. ft	Yes
4	Storage	8'5" x 15'8"	131 sq. ft	No
5	Hall	4'11" x 12'9"	63 sq. ft	Yes
6	Bath	8'7" x 5'4"	46 sq. ft	Yes
7	Bedroom	14'1" x 15'8"	220 sq. ft	Yes
8	Hall	7'1" x 5'0"	36 sq. ft	Yes
9	Utility	8'7" x 7'1"	61 sq. ft	No
10	Office	10'5" x 12'9"	133 sq. ft	Yes

## Home data report

5244 Sundance Road, Cherokee Hills, Salem, Roanoke County, Virginia, United States, 24153



## Room dimensions

Floor 2

Total:1776sqft

Excluded: 1252sqft

#		Dimensions	sqft	Counted as living area
11	Porch	29'9" x 8'10"	263 sq. ft	No
12	Bath	2'10" x 6'4"	18 sq. ft	Yes
13	Bath	3'2" x 6'4"	20 sq. ft	Yes
14	Laundry	5'10" x 7'3"	42 sq. ft	Yes
15	Patio	17'8" x 20'9"	367 sq. ft	No
16	Living Room	15'8" x 17'2"	269 sq. ft	Yes
17	Hall	2'2" x 5'5"	12 sq. ft	Yes
18	Foyer	7'5" x 12'9"	95 sq. ft	Yes
19	Primary Bedroom	16'0" x 13'8"	219 sq. ft	Yes
20	Garage	23'4" x 23'1"	539 sq. ft	No
21	Primary Bath	6'11" x 18'1"	126 sq. ft	Yes

Scan captured on Tue, 31 Mar 2026 16:43:13 GMT

SIZES AND DIMENSIONS ARE APPROXIMATE, ACTUAL MAY VARY.

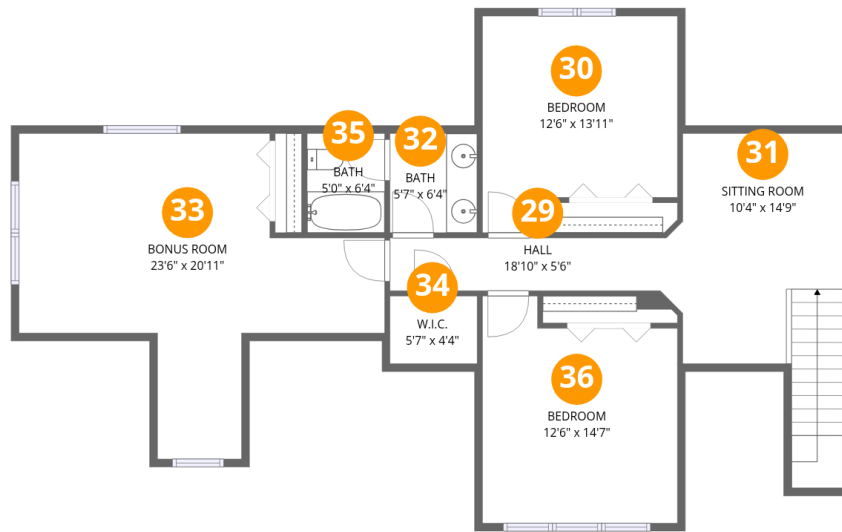
Home data report

**5244 Sundance Road, Cherokee Hills, Salem, Roanoke County,  
Virginia, United States, 24153**

#		Dimensions	sqft	Counted as living area
22	W.I.C.	7'6" x 7'3"	54 sq. ft	Yes
23	Kitchen	13'5" x 11'3"	151 sq. ft	Yes
24	Dining Area	14'6" x 12'9"	185 sq. ft	Yes
25	Breakfast Area	19'9" x 8'10"	174 sq. ft	Yes
26	W.I.C.	6'11" x 15'7"	108 sq. ft	Yes
27	Sitting Room	16'0" x 15'7"	250 sq. ft	Yes
28	Screened Porch	14'7" x 13'8"	200 sq. ft	No

## Home data report

5244 Sundance Road, Cherokee Hills, Salem, Roanoke County, Virginia, United States, 24153



## Room dimensions

Floor 3

Total:1028sqft Excluded: 0sqft

#		Dimensions	sqft	Counted as living area
29	Hall	18'10" x 5'6"	104 sq. ft	Yes
30	Bedroom	12'6" x 13'11"	174 sq. ft	Yes
31	Sitting Room	10'4" x 14'9"	152 sq. ft	Yes
32	Bath	5'7" x 6'4"	36 sq. ft	Yes
33	Bonus Room	23'6" x 20'11"	491 sq. ft	Yes
34	W.I.C.	5'7" x 4'4"	24 sq. ft	Yes
35	Bath	5'0" x 6'4"	32 sq. ft	Yes
36	Bedroom	12'6" x 14'7"	183 sq. ft	Yes

5244 Sundance Road, Cherokee Hills, Salem, Roanoke County, Virginia, United States, 24153

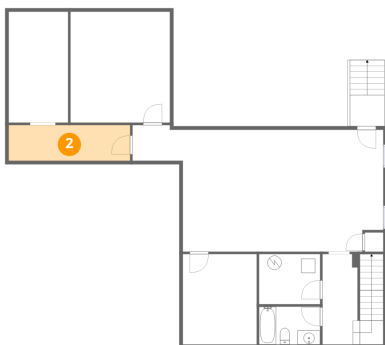
**1** Floor 1 - Outdoor



Dimensions: 5'0" x 4'5"  
Area: 22 sq. ft  
Counted as living area: No

Heated: No  
Finished: No  
Enclosed: No  
Contiguous: Yes  
Permitted: No  
Wet space: No  
Addition: No  
Conversion: No

**2** Floor 1 - Storage

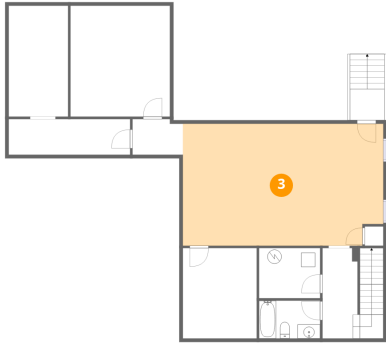


Dimensions: 17'2" x 5'0"  
Area: 86 sq. ft  
Counted as living area: No

Heated: No  
Finished: No  
Enclosed: No  
Contiguous: No  
Permitted: Yes  
Wet space: No  
Addition: No  
Conversion: No

5244 Sundance Road, Cherokee Hills, Salem, Roanoke County, Virginia, United States, 24153

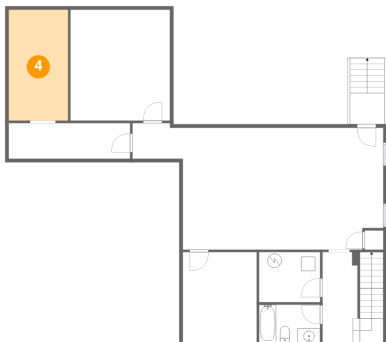
**3** Floor 1 - Recreation Room



Dimensions: 28'4" x 17'2"  
Area: 487 sq. ft  
Counted as living area: Yes

Heated: Yes  
Finished: Yes  
Enclosed: Yes  
Contiguous: Yes  
Permitted: Yes  
Wet space: No  
Addition: No  
Conversion: No

**4** Floor 1 - Storage



Dimensions: 8'5" x 15'8"  
Area: 131 sq. ft  
Counted as living area: No

Heated: No  
Finished: No  
Enclosed: No  
Contiguous: Yes  
Permitted: Yes  
Wet space: No  
Addition: No  
Conversion: No

**5** Floor 1 - Hall

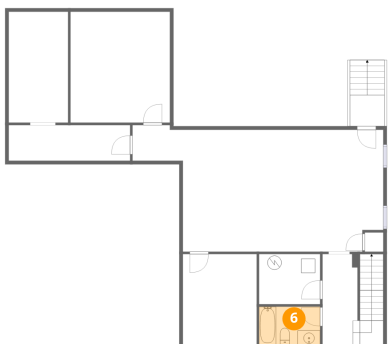


Dimensions: 4'11" x 12'9"  
Area: 63 sq. ft  
Counted as living area: Yes

Heated: Yes  
Finished: Yes  
Enclosed: Yes  
Contiguous: Yes  
Permitted: Yes  
Wet space: No  
Addition: No  
Conversion: No

5244 Sundance Road, Cherokee Hills, Salem, Roanoke County, Virginia, United States, 24153

**6** Floor 1 - Bath



Dimensions: 8'7" x 5'4"  
Area: 46 sq. ft  
Counted as living area: Yes

Heated: Yes  
Finished: Yes  
Enclosed: Yes  
Contiguous: Yes  
Permitted: Yes  
Wet space: Yes  
Addition: No  
Conversion: No

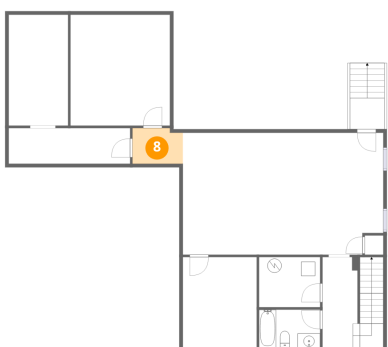
**7** Floor 1 - Bedroom



Dimensions: 14'1" x 15'8"  
Area: 220 sq. ft  
Counted as living area: Yes

Heated: Yes  
Finished: Yes  
Enclosed: Yes  
Contiguous: Yes  
Permitted: Yes  
Wet space: No  
Addition: No  
Conversion: No

**8** Floor 1 - Hall

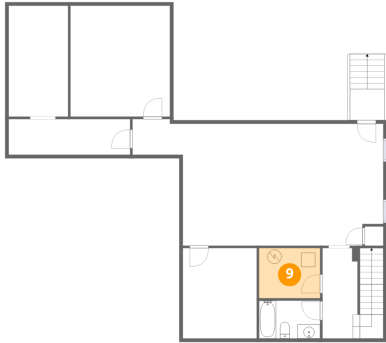


Dimensions: 7'1" x 5'0"  
Area: 36 sq. ft  
Counted as living area: Yes

Heated: Yes  
Finished: Yes  
Enclosed: Yes  
Contiguous: Yes  
Permitted: Yes  
Wet space: No  
Addition: No  
Conversion: No

5244 Sundance Road, Cherokee Hills, Salem, Roanoke County, Virginia, United States, 24153

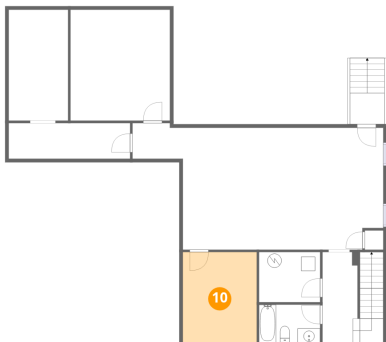
### 9 Floor 1 - Utility



Dimensions: 8'7" x 7'1"  
Area: 61 sq. ft  
Counted as living area: No

Heated: Yes  
Finished: No  
Enclosed: Yes  
Contiguous: Yes  
Permitted: Yes  
Wet space: No  
Addition: No  
Conversion: No

### 10 Floor 1 - Office



Dimensions: 10'5" x 12'9"  
Area: 133 sq. ft  
Counted as living area: Yes

Heated: Yes  
Finished: Yes  
Enclosed: Yes  
Contiguous: Yes  
Permitted: Yes  
Wet space: No  
Addition: No  
Conversion: No

### 11 Floor 2 - Porch



Dimensions: 29'9" x 8'10"  
Area: 263 sq. ft  
Counted as living area: No

Heated: No  
Finished: No  
Enclosed: No  
Contiguous: Yes  
Permitted: Yes  
Wet space: No  
Addition: No  
Conversion: No

5244 Sundance Road, Cherokee Hills, Salem, Roanoke County, Virginia, United States, 24153

**12** Floor 2 - Bath



Dimensions: 2'10" x 6'4"  
Area: 18 sq. ft  
Counted as living area: Yes

Heated: Yes  
Finished: Yes  
Enclosed: Yes  
Contiguous: Yes  
Permitted: Yes  
Wet space: Yes  
Addition: No  
Conversion: No

**13** Floor 2 - Bath



Dimensions: 3'2" x 6'4"  
Area: 20 sq. ft  
Counted as living area: Yes

Heated: Yes  
Finished: Yes  
Enclosed: Yes  
Contiguous: Yes  
Permitted: Yes  
Wet space: Yes  
Addition: No  
Conversion: No

**14** Floor 2 - Laundry



Dimensions: 5'10" x 7'3"  
Area: 42 sq. ft  
Counted as living area: Yes

Heated: Yes  
Finished: Yes  
Enclosed: Yes  
Contiguous: Yes  
Permitted: Yes  
Wet space: No  
Addition: No  
Conversion: No

5244 Sundance Road, Cherokee Hills, Salem, Roanoke County, Virginia, United States, 24153

**15** Floor 2 - Patio



Dimensions: 17'8" x 20'9"  
Area: 367 sq. ft  
Counted as living area: No

Heated: No  
Finished: No  
Enclosed: No  
Contiguous: Yes  
Permitted: Yes  
Wet space: No  
Addition: No  
Conversion: No

**16** Floor 2 - Living Room



Dimensions: 15'8" x 17'2"  
Area: 269 sq. ft  
Counted as living area: Yes

Heated: Yes  
Finished: Yes  
Enclosed: Yes  
Contiguous: Yes  
Permitted: Yes  
Wet space: No  
Addition: No  
Conversion: No

**17** Floor 2 - Hall



Dimensions: 2'2" x 5'5"  
Area: 12 sq. ft  
Counted as living area: Yes

Heated: Yes  
Finished: Yes  
Enclosed: Yes  
Contiguous: Yes  
Permitted: Yes  
Wet space: No  
Addition: No  
Conversion: No

5244 Sundance Road, Cherokee Hills, Salem, Roanoke County, Virginia, United States, 24153

**18** Floor 2 - Foyer



Dimensions: 7'5" x 12'9"  
Area: 95 sq. ft  
Counted as living area: Yes

Heated: Yes  
Finished: Yes  
Enclosed: Yes  
Contiguous: Yes  
Permitted: Yes  
Wet space: No  
Addition: No  
Conversion: No

**19** Floor 2 - Primary Bedroom



Dimensions: 16'0" x 13'8"  
Area: 219 sq. ft  
Counted as living area: Yes

Heated: Yes  
Finished: Yes  
Enclosed: Yes  
Contiguous: Yes  
Permitted: Yes  
Wet space: No  
Addition: No  
Conversion: No

**20** Floor 2 - Garage



Dimensions: 23'4" x 23'1"  
Area: 539 sq. ft  
Counted as living area: No

Heated: No  
Finished: No  
Enclosed: Yes  
Contiguous: Yes  
Permitted: Yes  
Wet space: No  
Addition: No  
Conversion: No

5244 Sundance Road, Cherokee Hills, Salem, Roanoke County, Virginia, United States, 24153

**21** Floor 2 - Primary Bath



Dimensions: 6'11" x 18'1"  
Area: 126 sq. ft  
Counted as living area: Yes

Heated: Yes  
Finished: Yes  
Enclosed: Yes  
Contiguous: Yes  
Permitted: Yes  
Wet space: Yes  
Addition: No  
Conversion: No

**22** Floor 2 - W.I.C.



Dimensions: 7'6" x 7'3"  
Area: 54 sq. ft  
Counted as living area: Yes

Heated: Yes  
Finished: Yes  
Enclosed: Yes  
Contiguous: Yes  
Permitted: Yes  
Wet space: No  
Addition: No  
Conversion: No

**23** Floor 2 - Kitchen



Dimensions: 13'5" x 11'3"  
Area: 151 sq. ft  
Counted as living area: Yes

Heated: Yes  
Finished: Yes  
Enclosed: Yes  
Contiguous: Yes  
Permitted: Yes  
Wet space: No  
Addition: No  
Conversion: No

5244 Sundance Road, Cherokee Hills, Salem, Roanoke County, Virginia, United States, 24153

**24** Floor 2 - Dining Area



Dimensions: 14'6" x 12'9"  
Area: 185 sq. ft  
Counted as living area: Yes

Heated: Yes  
Finished: Yes  
Enclosed: Yes  
Contiguous: Yes  
Permitted: Yes  
Wet space: No  
Addition: No  
Conversion: No

**25** Floor 2 - Breakfast Area



Dimensions: 19'9" x 8'10"  
Area: 174 sq. ft  
Counted as living area: Yes

Heated: Yes  
Finished: Yes  
Enclosed: Yes  
Contiguous: Yes  
Permitted: Yes  
Wet space: No  
Addition: No  
Conversion: No

**26** Floor 2 - W.I.C.



Dimensions: 6'11" x 15'7"  
Area: 108 sq. ft  
Counted as living area: Yes

Heated: Yes  
Finished: Yes  
Enclosed: Yes  
Contiguous: Yes  
Permitted: Yes  
Wet space: No  
Addition: No  
Conversion: No

5244 Sundance Road, Cherokee Hills, Salem, Roanoke County, Virginia, United States, 24153

### 27 Floor 2 - Sitting Room



Dimensions: 16'0" x 15'7"  
Area: 250 sq. ft  
Counted as living area: Yes

Heated: Yes  
Finished: Yes  
Enclosed: Yes  
Contiguous: Yes  
Permitted: Yes  
Wet space: No  
Addition: No  
Conversion: No

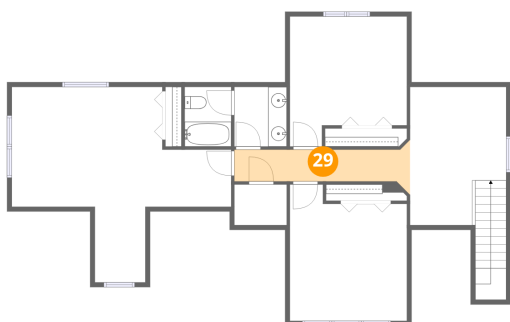
### 28 Floor 2 - Screened Porch



Dimensions: 14'7" x 13'8"  
Area: 200 sq. ft  
Counted as living area: No

Heated: No  
Finished: No  
Enclosed: No  
Contiguous: Yes  
Permitted: Yes  
Wet space: No  
Addition: No  
Conversion: No

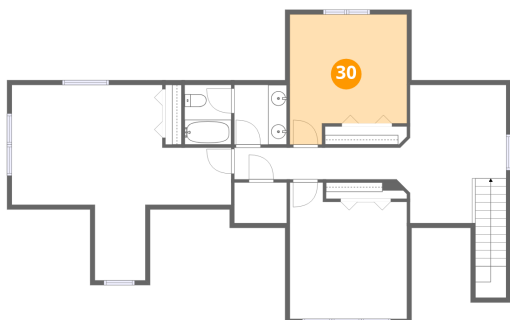
### 29 Floor 3 - Hall



Dimensions: 18'10" x 5'6"  
Area: 104 sq. ft  
Counted as living area: Yes

Heated: Yes  
Finished: Yes  
Enclosed: Yes  
Contiguous: Yes  
Permitted: Yes  
Wet space: No  
Addition: No  
Conversion: No

### 30 Floor 3 - Bedroom



Dimensions: 12'6" x 13'11"  
Area: 174 sq. ft  
Counted as living area: Yes

Heated: Yes  
Finished: Yes  
Enclosed: Yes  
Contiguous: Yes  
Permitted: Yes  
Wet space: No  
Addition: No  
Conversion: No

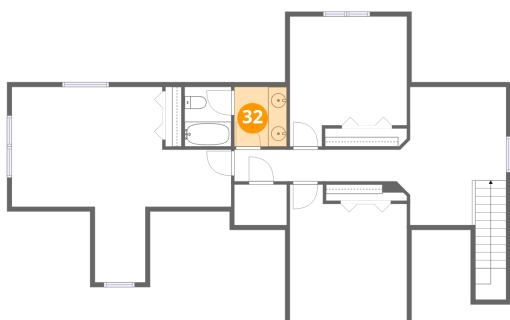
### 31 Floor 3 - Sitting Room



Dimensions: 10'4" x 14'9"  
Area: 152 sq. ft  
Counted as living area: Yes

Heated: Yes  
Finished: Yes  
Enclosed: Yes  
Contiguous: Yes  
Permitted: Yes  
Wet space: No  
Addition: No  
Conversion: No

### 32 Floor 3 - Bath

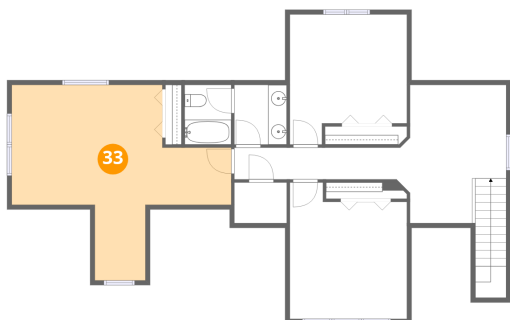


Dimensions: 5'7" x 6'4"  
Area: 36 sq. ft  
Counted as living area: Yes

Heated: Yes  
Finished: Yes  
Enclosed: Yes  
Contiguous: Yes  
Permitted: Yes  
Wet space: Yes  
Addition: No  
Conversion: No

5244 Sundance Road, Cherokee Hills, Salem, Roanoke County, Virginia, United States, 24153

### 33 Floor 3 - Bonus Room



Dimensions: 23'6" x 20'11"  
Area: 491 sq. ft  
Counted as living area: Yes

Heated: Yes  
Finished: Yes  
Enclosed: Yes  
Contiguous: Yes  
Permitted: Yes  
Wet space: No  
Addition: No  
Conversion: No

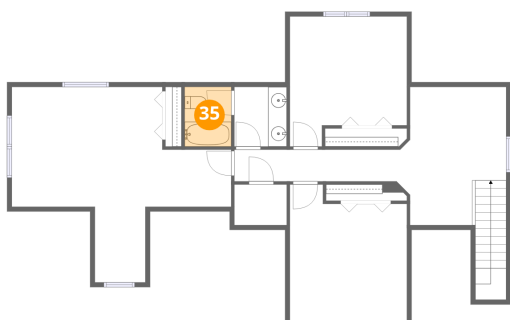
### 34 Floor 3 - W.I.C.



Dimensions: 5'7" x 4'4"  
Area: 24 sq. ft  
Counted as living area: Yes

Heated: Yes  
Finished: Yes  
Enclosed: Yes  
Contiguous: Yes  
Permitted: Yes  
Wet space: No  
Addition: No  
Conversion: No

### 35 Floor 3 - Bath

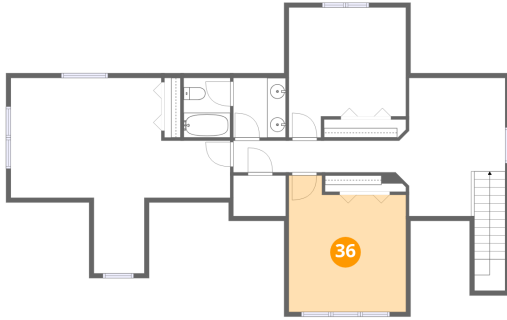


Dimensions: 5'0" x 6'4"  
Area: 32 sq. ft  
Counted as living area: Yes

Heated: Yes  
Finished: Yes  
Enclosed: Yes  
Contiguous: Yes  
Permitted: Yes  
Wet space: Yes  
Addition: No  
Conversion: No

5244 Sundance Road, Cherokee Hills, Salem, Roanoke County,  
Virginia, United States, 24153

**36** Floor 3 - Bedroom



Dimensions: 12'6" x 14'7"  
Area: 183 sq. ft  
Counted as living area: Yes

Heated: Yes  
Finished: Yes  
Enclosed: Yes  
Contiguous: Yes  
Permitted: Yes  
Wet space: No  
Addition: No  
Conversion: No