

Home data report

7890 Rimrock Dr, Gillette, WY, US



Total Area: 3212 sq. ft

Basement: 602 sq. ft, 1st Floor: 972 sq. ft, 2nd Floor: 680 sq. ft, 3rd Floor: 958 sq. ft

Excluded: Utility 35 sq. ft, Garage 1017 sq. ft, Screened porch 138 sq. ft, Walls: 310 sq. ft

Property summary

 **4** Floors

 **5** Bedrooms

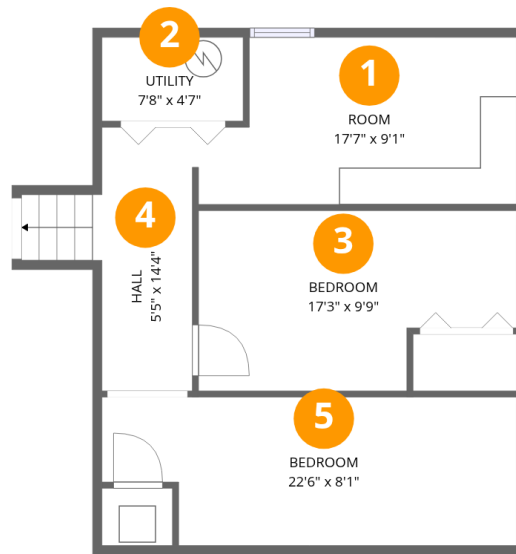
 **2** Bathrooms

Home data report

7890 Rimrock Dr, Gillette, WY, US

 **1**
Half baths

 **1**
Garages

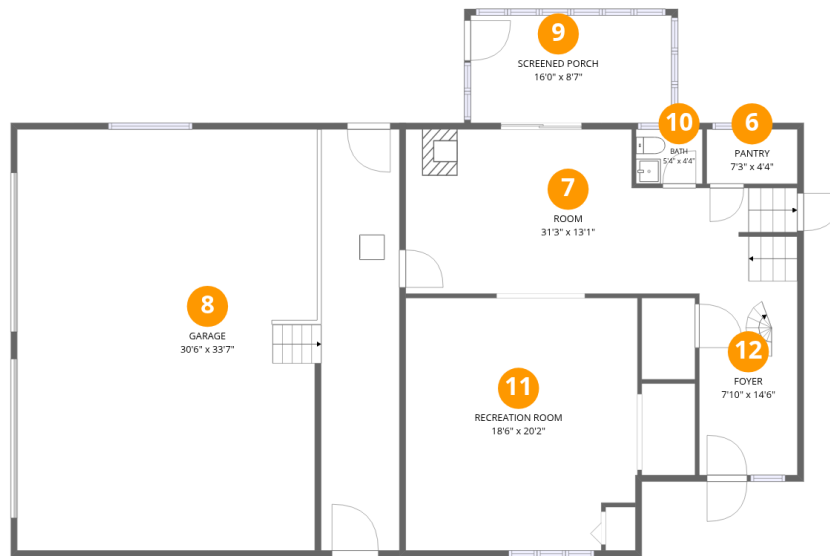


Room dimensions

Floor 1 Below grade

Total: 602 sqft Excluded: 35 sqft

#		Dimensions	sqft	Counted as living area
1	Room	17'7" x 9'1"	144 sq. ft	Yes
2	Utility	7'8" x 4'7"	35 sq. ft	No
3	Bedroom	17'3" x 9'9"	149 sq. ft	Yes
4	Hall	5'5" x 14'4"	86 sq. ft	Yes
5	Bedroom	22'6" x 8'1"	167 sq. ft	Yes



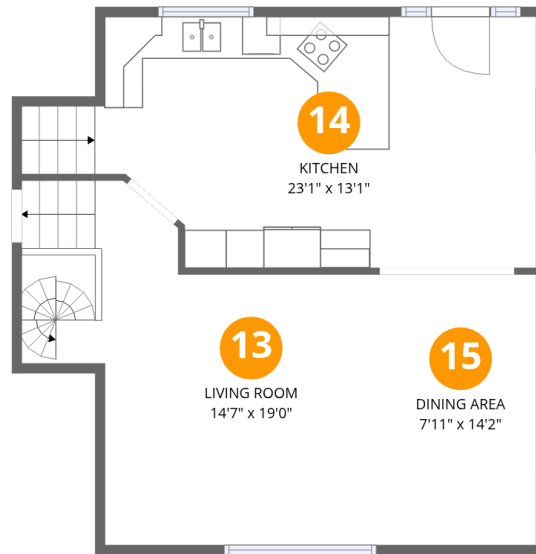
Room dimensions

Floor 2

Total: 972 sqft

Excluded: 1155 sqft

#		Dimensions	sqft	Counted as living area
6	Pantry	7'3" x 4'4"	31 sq. ft	Yes
7	Room	31'3" x 13'1"	347 sq. ft	Yes
8	Garage	30'6" x 33'7"	1017 sq. ft	No
9	Screened Porch	16'0" x 8'7"	138 sq. ft	No
10	Bath	5'4" x 4'4"	23 sq. ft	Yes
11	Recreation Room	18'6" x 20'2"	361 sq. ft	Yes
12	Foyer	7'10" x 14'6"	113 sq. ft	Yes



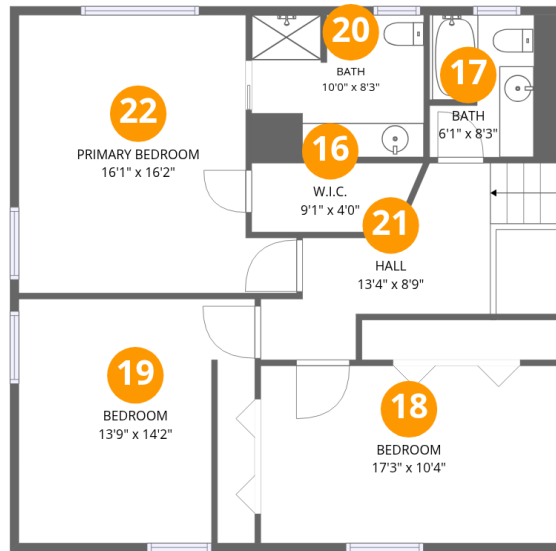
Room dimensions

Floor 3

Total: 680 sqft

Excluded: 0 sqft

#		Dimensions	sqft	Counted as living area
13	Living Room	14'7" x 19'0"	263 sq. ft	Yes
14	Kitchen	23'1" x 13'1"	295 sq. ft	Yes
15	Dining Area	7'11" x 14'2"	112 sq. ft	Yes



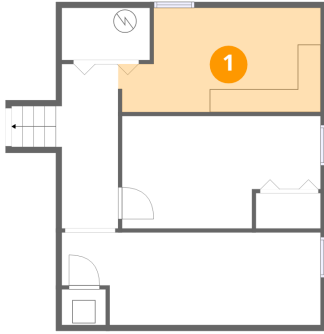
Room dimensions

Floor 4

Total: 958 sqft Excluded: 0 sqft

#		Dimensions	sqft	Counted as living area
16	W.I.C.	9'1" x 4'0"	36 sq. ft	Yes
17	Bath	6'1" x 8'3"	60 sq. ft	Yes
18	Bedroom	17'3" x 10'4"	177 sq. ft	Yes
19	Bedroom	13'9" x 14'2"	191 sq. ft	Yes
20	Bath	10'0" x 8'3"	74 sq. ft	Yes
21	Hall	13'4" x 8'9"	119 sq. ft	Yes
22	Primary Bedroom	16'1" x 16'2"	222 sq. ft	Yes

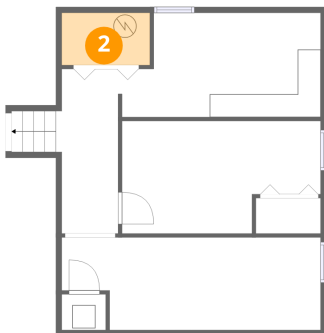
1 Floor 1 - Room



Dimensions: 17'7" x 9'1"
Area: 144 sq. ft
Counted as living area: Yes

Heated: Yes
Finished: Yes
Enclosed: Yes
Contiguous: Yes
Permitted: Yes
Wet space: No
Addition: No
Conversion: No

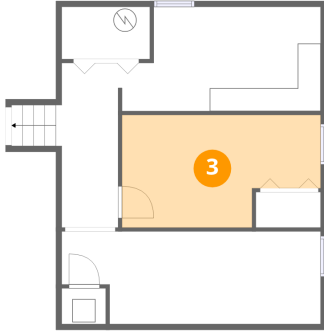
2 Floor 1 - Utility



Dimensions: 7'8" x 4'7"
Area: 35 sq. ft
Counted as living area: No

Heated: Yes
Finished: No
Enclosed: Yes
Contiguous: Yes
Permitted: Yes
Wet space: No
Addition: No
Conversion: No

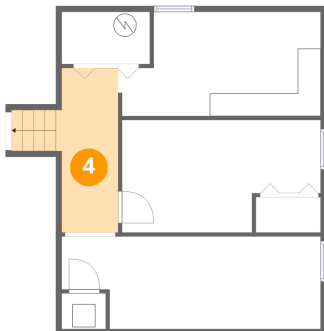
3 Floor 1 - Bedroom



Dimensions: 17'3" x 9'9"
Area: 149 sq. ft
Counted as living area: Yes

Heated: Yes
Finished: Yes
Enclosed: Yes
Contiguous: Yes
Permitted: Yes
Wet space: No
Addition: No
Conversion: No

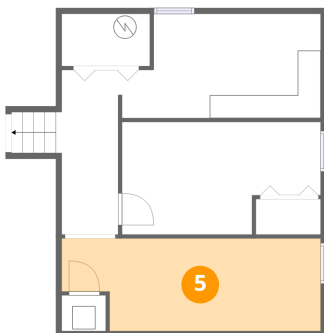
4 Floor 1 - Hall



Dimensions: 5'5" x 14'4"
Area: 86 sq. ft
Counted as living area: Yes

Heated: Yes
Finished: Yes
Enclosed: Yes
Contiguous: Yes
Permitted: Yes
Wet space: No
Addition: No
Conversion: No

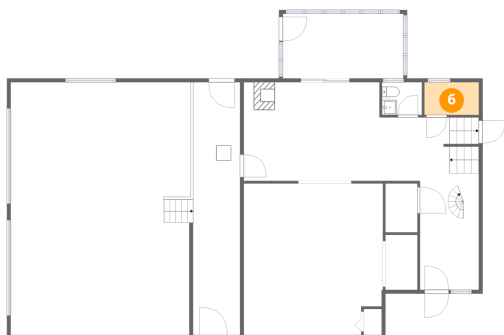
5 Floor 1 - Bedroom



Dimensions: 22'6" x 8'1"
Area: 167 sq. ft
Counted as living area: Yes

Heated: Yes
Finished: Yes
Enclosed: Yes
Contiguous: Yes
Permitted: Yes
Wet space: No
Addition: No
Conversion: No

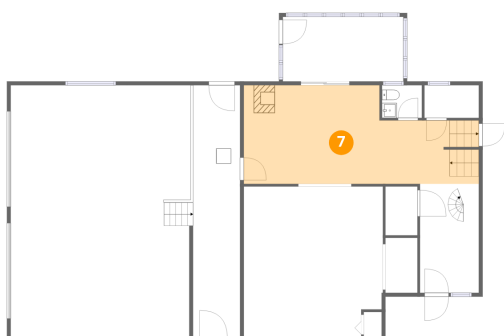
6 Floor 2 - Pantry



Dimensions: 7'3" x 4'4"
Area: 31 sq. ft
Counted as living area: Yes

Heated: Yes
Finished: Yes
Enclosed: Yes
Contiguous: Yes
Permitted: Yes
Wet space: No
Addition: No
Conversion: No

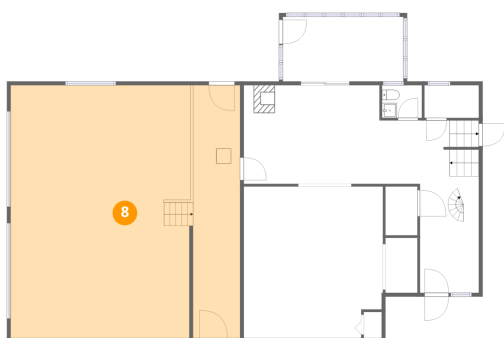
7 Floor 2 - Room



Dimensions: 31'3" x 13'1"
Area: 347 sq. ft
Counted as living area: Yes

Heated: Yes
Finished: Yes
Enclosed: Yes
Contiguous: Yes
Permitted: Yes
Wet space: No
Addition: No
Conversion: No

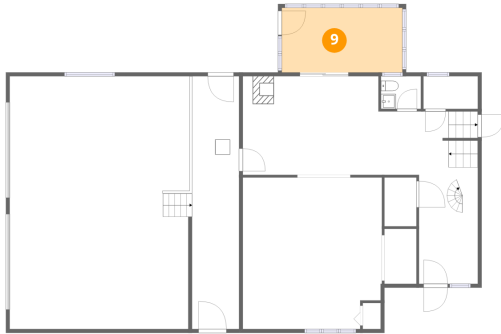
8 Floor 2 - Garage



Dimensions: 30'6" x 33'7"
Area: 1017 sq. ft
Counted as living area: No

Heated: No
Finished: No
Enclosed: Yes
Contiguous: Yes
Permitted: Yes
Wet space: No
Addition: No
Conversion: No

9 Floor 2 - Screened Porch



Dimensions: 16'0" x 8'7"
Area: 138 sq. ft
Counted as living area: No

Heated: No
Finished: No
Enclosed: No
Contiguous: Yes
Permitted: Yes
Wet space: No
Addition: No
Conversion: No

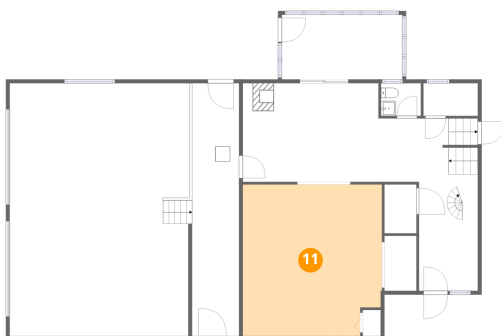
10 Floor 2 - Bath



Dimensions: 5'4" x 4'4"
Area: 23 sq. ft
Counted as living area: Yes

Heated: Yes
Finished: Yes
Enclosed: Yes
Contiguous: Yes
Permitted: Yes
Wet space: Yes
Addition: No
Conversion: No

11 Floor 2 - Recreation Room



Dimensions: 18'6" x 20'2"
Area: 361 sq. ft
Counted as living area: Yes

Heated: Yes
Finished: Yes
Enclosed: Yes
Contiguous: Yes
Permitted: Yes
Wet space: No
Addition: No
Conversion: No

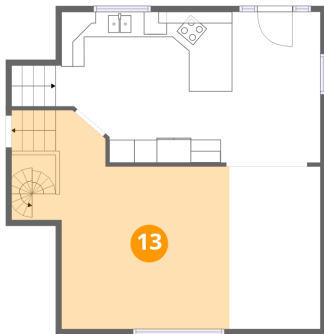
12 Floor 2 - Foyer



Dimensions: 7'10" x 14'6"
Area: 113 sq. ft
Counted as living area: Yes

Heated: Yes
Finished: Yes
Enclosed: Yes
Contiguous: Yes
Permitted: Yes
Wet space: No
Addition: No
Conversion: No

13 Floor 3 - Living Room



Dimensions: 14'7" x 19'0"
Area: 263 sq. ft
Counted as living area: Yes

Heated: Yes
Finished: Yes
Enclosed: Yes
Contiguous: Yes
Permitted: Yes
Wet space: No
Addition: No
Conversion: No

14 Floor 3 - Kitchen



Dimensions: 23'1" x 13'1"
Area: 295 sq. ft
Counted as living area: Yes

Heated: Yes
Finished: Yes
Enclosed: Yes
Contiguous: Yes
Permitted: Yes
Wet space: No
Addition: No
Conversion: No

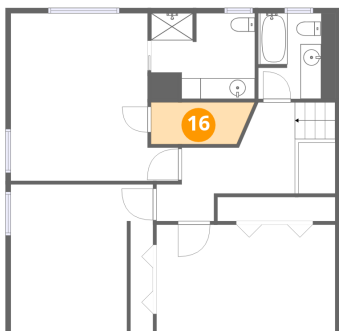
15 Floor 3 - Dining Area



Dimensions: 7'11" x 14'2"
Area: 112 sq. ft
Counted as living area: Yes

Heated: Yes
Finished: Yes
Enclosed: Yes
Contiguous: Yes
Permitted: Yes
Wet space: No
Addition: No
Conversion: No

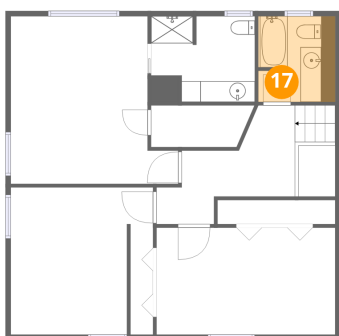
16 Floor 4 - W.I.C.



Dimensions: 9'1" x 4'0"
Area: 36 sq. ft
Counted as living area: Yes

Heated: Yes
Finished: Yes
Enclosed: Yes
Contiguous: Yes
Permitted: Yes
Wet space: No
Addition: No
Conversion: No

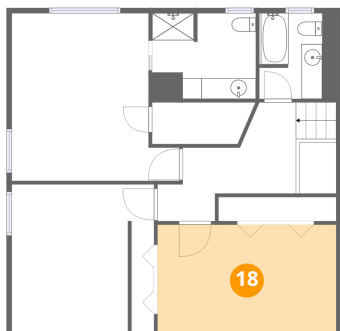
17 Floor 4 - Bath



Dimensions: 6'1" x 8'3"
Area: 60 sq. ft
Counted as living area: Yes

Heated: Yes
Finished: Yes
Enclosed: Yes
Contiguous: Yes
Permitted: Yes
Wet space: Yes
Addition: No
Conversion: No

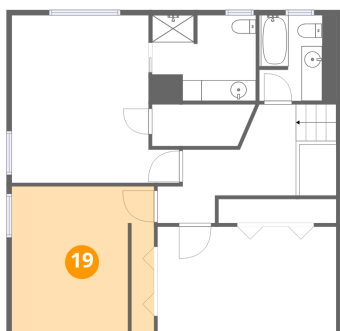
18 Floor 4 - Bedroom



Dimensions: 17'3" x 10'4"
Area: 177 sq. ft
Counted as living area: Yes

Heated: Yes
Finished: Yes
Enclosed: Yes
Contiguous: Yes
Permitted: Yes
Wet space: No
Addition: No
Conversion: No

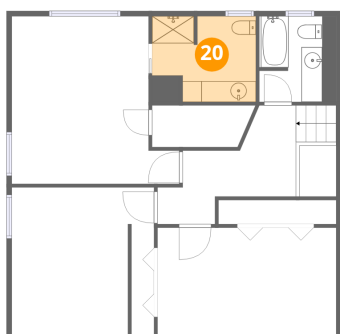
19 Floor 4 - Bedroom



Dimensions: 13'9" x 14'2"
Area: 191 sq. ft
Counted as living area: Yes

Heated: Yes
Finished: Yes
Enclosed: Yes
Contiguous: Yes
Permitted: Yes
Wet space: No
Addition: No
Conversion: No

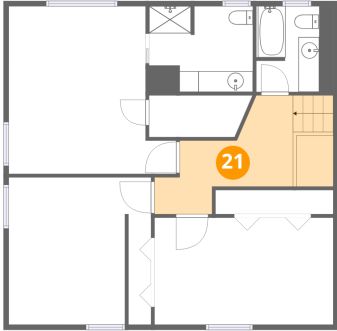
20 Floor 4 - Bath



Dimensions: 10'0" x 8'3"
Area: 74 sq. ft
Counted as living area: Yes

Heated: Yes
Finished: Yes
Enclosed: Yes
Contiguous: Yes
Permitted: Yes
Wet space: Yes
Addition: No
Conversion: No

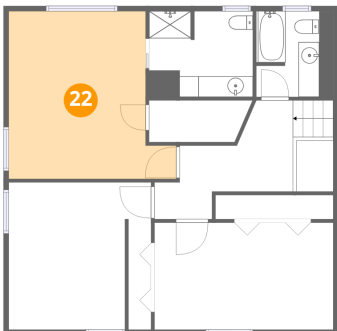
21 Floor 4 - Hall



Dimensions: 13'4" x 8'9"
Area: 119 sq. ft
Counted as living area: Yes

Heated: Yes
Finished: Yes
Enclosed: Yes
Contiguous: Yes
Permitted: Yes
Wet space: No
Addition: No
Conversion: No

22 Floor 4 - Primary Bedroom



Dimensions: 16'1" x 16'2"
Area: 222 sq. ft
Counted as living area: Yes

Heated: Yes
Finished: Yes
Enclosed: Yes
Contiguous: Yes
Permitted: Yes
Wet space: No
Addition: No
Conversion: No