

# Home data report

## 12425 Kalispell St, Brighton, CO, US



**Total Area: 1637 sq. ft**

Basement: 0 sq. ft, 1st Floor: 708 sq. ft, 2nd Floor: 929 sq. ft

Excluded: Room 210 sq. ft, Basement 414 sq. ft, Utility 84 sq. ft, Garage 515 sq. ft, Open to below 50 sq. ft, Walls: 249 sq. ft

### Property summary

 **3** Floors

 **3** Bedrooms

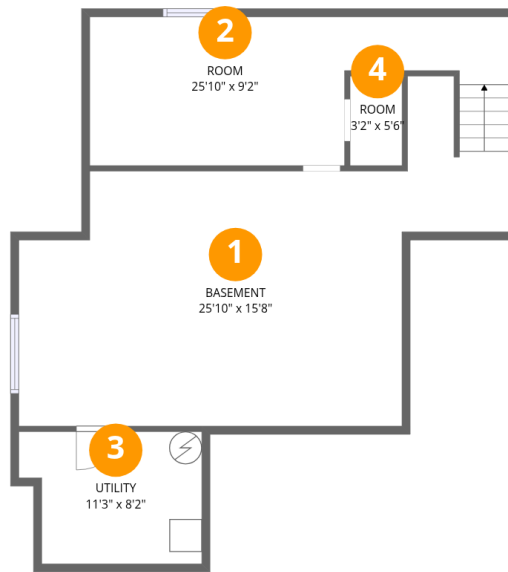
 **2** Bathrooms

Home data report

**12425 Kalispell St, Brighton, CO, US**

 **1**  
Half baths

 **1**  
Garages



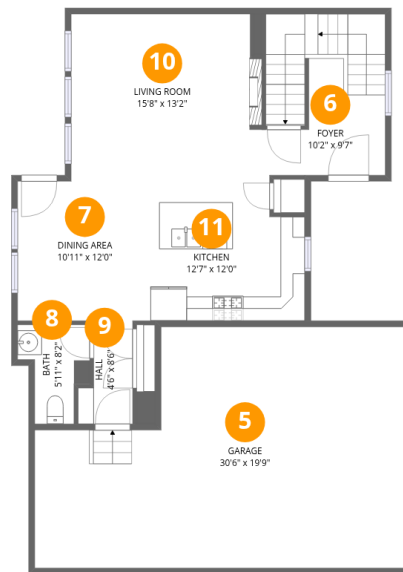
## Room dimensions

Floor 1 Below grade

Total: 0sqft

Excluded: 708sqft

#		Dimensions	sqft	Counted as living area
1	Basement	25'10" x 15'8"	404 sq. ft	No
2	Room	25'10" x 9'2"	236 sq. ft	No
3	Utility	11'3" x 8'2"	92 sq. ft	No
4	Room	3'2" x 5'6"	18 sq. ft	No



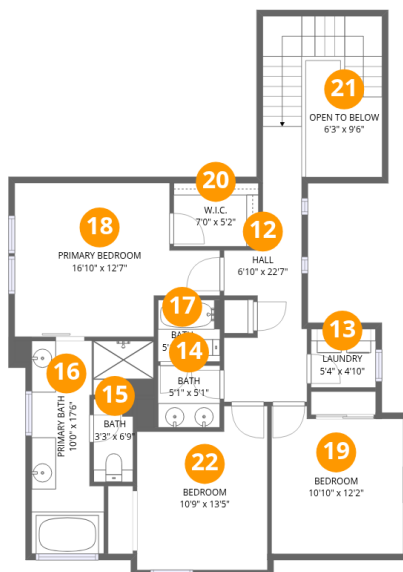
## Room dimensions

Floor 2

Total:708sqft

Excluded: 515sqft

#		Dimensions	sqft	Counted as living area
5	Garage	30'6" x 19'9"	603 sq. ft	No
6	Foyer	10'2" x 9'7"	97 sq. ft	Yes
7	Dining Area	10'11" x 12'0"	131 sq. ft	Yes
8	Bath	5'11" x 8'2"	48 sq. ft	Yes
9	Hall	4'6" x 8'6"	38 sq. ft	Yes
10	Living Room	15'8" x 13'2"	206 sq. ft	Yes
11	Kitchen	12'7" x 12'0"	151 sq. ft	Yes



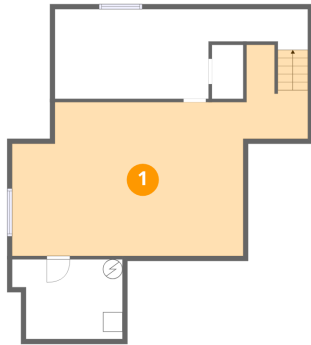
## Room dimensions

Floor 3

Total:929sqft Excluded: 50sqft

#		Dimensions	sqft	Counted as living area
12	Hall	6'10" x 22'7"	154 sq. ft	Yes
13	Laundry	5'4" x 4'10"	26 sq. ft	Yes
14	Bath	5'1" x 5'1"	26 sq. ft	Yes
15	Bath	3'3" x 6'9"	22 sq. ft	Yes
16	Primary Bath	10'0" x 17'6"	175 sq. ft	Yes
17	Bath	5'1" x 5'1"	26 sq. ft	Yes
18	Primary Bedroom	16'10" x 12'7"	212 sq. ft	Yes
19	Bedroom	10'10" x 12'2"	131 sq. ft	Yes
20	W.I.C.	7'0" x 5'2"	36 sq. ft	Yes
21	Open To Below	6'3" x 9'6"	60 sq. ft	No
22	Bedroom	10'9" x 13'5"	144 sq. ft	Yes

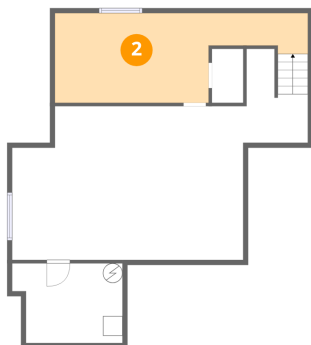
## 1 Floor 1 - Basement



Dimensions: 25'10" x 15'8"  
Area: 404 sq. ft  
Counted as living area: No

Heated: Yes  
Finished: No  
Enclosed: Yes  
Contiguous: Yes  
Permitted: Yes  
Wet space: No  
Addition: No  
Conversion: No

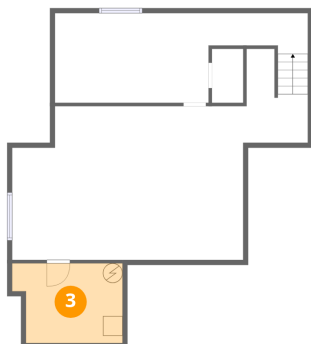
## 2 Floor 1 - Room



Dimensions: 25'10" x 9'2"  
Area: 236 sq. ft  
Counted as living area: No

Heated: Yes  
Finished: No  
Enclosed: Yes  
Contiguous: Yes  
Permitted: Yes  
Wet space: No  
Addition: No  
Conversion: No

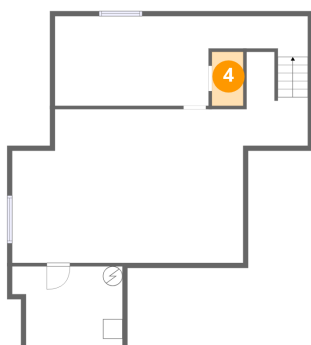
### 3 Floor 1 - Utility



Dimensions: 11'3" x 8'2"  
Area: 92 sq. ft  
Counted as living area: No

Heated: Yes  
Finished: No  
Enclosed: Yes  
Contiguous: Yes  
Permitted: Yes  
Wet space: No  
Addition: No  
Conversion: No

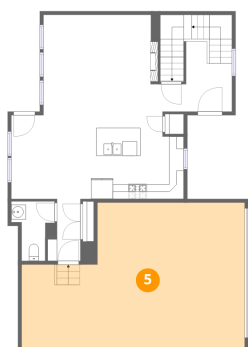
### 4 Floor 1 - Room



Dimensions: 3'2" x 5'6"  
Area: 18 sq. ft  
Counted as living area: No

Heated: Yes  
Finished: No  
Enclosed: Yes  
Contiguous: Yes  
Permitted: Yes  
Wet space: No  
Addition: No  
Conversion: No

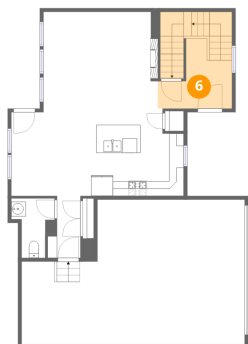
### 5 Floor 2 - Garage



Dimensions: 30'6" x 19'9"  
Area: 603 sq. ft  
Counted as living area: No

Heated: No  
Finished: No  
Enclosed: Yes  
Contiguous: Yes  
Permitted: Yes  
Wet space: No  
Addition: No  
Conversion: No

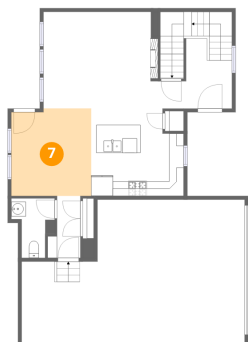
## 6 Floor 2 - Foyer



Dimensions: 10'2" x 9'7"  
Area: 97 sq. ft  
Counted as living area: Yes

Heated: Yes  
Finished: Yes  
Enclosed: Yes  
Contiguous: Yes  
Permitted: Yes  
Wet space: No  
Addition: No  
Conversion: No

## 7 Floor 2 - Dining Area



Dimensions: 10'11" x 12'0"  
Area: 131 sq. ft  
Counted as living area: Yes

Heated: Yes  
Finished: Yes  
Enclosed: Yes  
Contiguous: Yes  
Permitted: Yes  
Wet space: No  
Addition: No  
Conversion: No

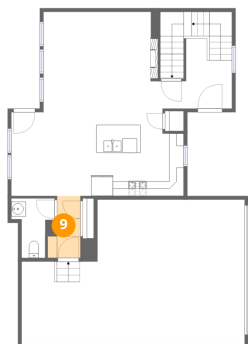
## 8 Floor 2 - Bath



Dimensions: 5'11" x 8'2"  
Area: 48 sq. ft  
Counted as living area: Yes

Heated: Yes  
Finished: Yes  
Enclosed: Yes  
Contiguous: Yes  
Permitted: Yes  
Wet space: No  
Addition: No  
Conversion: No

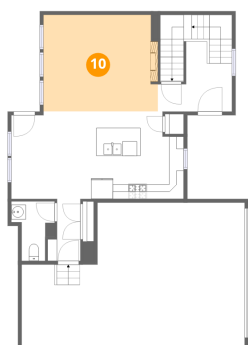
### 9 Floor 2 - Hall



Dimensions: 4'6" x 8'6"  
Area: 38 sq. ft  
Counted as living area: Yes

Heated: Yes  
Finished: Yes  
Enclosed: Yes  
Contiguous: Yes  
Permitted: Yes  
Wet space: No  
Addition: No  
Conversion: No

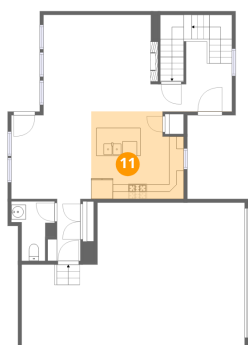
### 10 Floor 2 - Living Room



Dimensions: 15'8" x 13'2"  
Area: 206 sq. ft  
Counted as living area: Yes

Heated: Yes  
Finished: Yes  
Enclosed: Yes  
Contiguous: Yes  
Permitted: Yes  
Wet space: No  
Addition: No  
Conversion: No

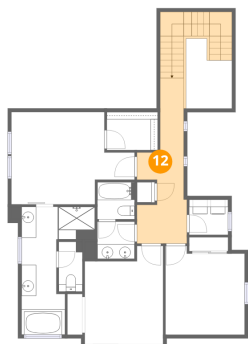
### 11 Floor 2 - Kitchen



Dimensions: 12'7" x 12'0"  
Area: 151 sq. ft  
Counted as living area: Yes

Heated: Yes  
Finished: Yes  
Enclosed: Yes  
Contiguous: Yes  
Permitted: Yes  
Wet space: No  
Addition: No  
Conversion: No

### 12 Floor 3 - Hall



Dimensions: 6'10" x 22'7"  
Area: 154 sq. ft  
Counted as living area: Yes

Heated: Yes  
Finished: Yes  
Enclosed: Yes  
Contiguous: Yes  
Permitted: Yes  
Wet space: No  
Addition: No  
Conversion: No

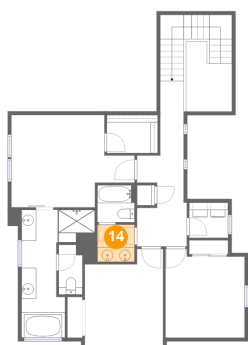
### 13 Floor 3 - Laundry



Dimensions: 5'4" x 4'10"  
Area: 26 sq. ft  
Counted as living area: Yes

Heated: Yes  
Finished: Yes  
Enclosed: Yes  
Contiguous: Yes  
Permitted: Yes  
Wet space: No  
Addition: No  
Conversion: No

### 14 Floor 3 - Bath



Dimensions: 5'1" x 5'1"  
Area: 26 sq. ft  
Counted as living area: Yes

Heated: Yes  
Finished: Yes  
Enclosed: Yes  
Contiguous: Yes  
Permitted: Yes  
Wet space: Yes  
Addition: No  
Conversion: No

**15** Floor 3 - Bath

---

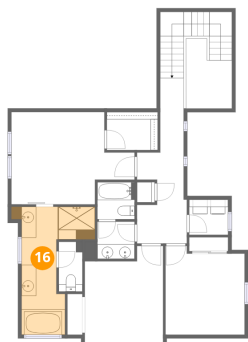


Dimensions: 3'3" x 6'9"  
Area: 22 sq. ft  
Counted as living area: Yes

Heated: Yes  
Finished: Yes  
Enclosed: Yes  
Contiguous: Yes  
Permitted: Yes  
Wet space: Yes  
Addition: No  
Conversion: No

**16** Floor 3 - Primary Bath

---



Dimensions: 10'0" x 17'6"  
Area: 175 sq. ft  
Counted as living area: Yes

Heated: Yes  
Finished: Yes  
Enclosed: Yes  
Contiguous: Yes  
Permitted: Yes  
Wet space: Yes  
Addition: No  
Conversion: No

**17** Floor 3 - Bath

---



Dimensions: 5'1" x 5'1"  
Area: 26 sq. ft  
Counted as living area: Yes

Heated: Yes  
Finished: Yes  
Enclosed: Yes  
Contiguous: Yes  
Permitted: Yes  
Wet space: Yes  
Addition: No  
Conversion: No

### 18 Floor 3 - Primary Bedroom



Dimensions: 16'10" x 12'7"  
Area: 212 sq. ft  
Counted as living area: Yes

Heated: Yes  
Finished: Yes  
Enclosed: Yes  
Contiguous: Yes  
Permitted: Yes  
Wet space: No  
Addition: No  
Conversion: No

### 19 Floor 3 - Bedroom



Dimensions: 10'10" x 12'2"  
Area: 131 sq. ft  
Counted as living area: Yes

Heated: Yes  
Finished: Yes  
Enclosed: Yes  
Contiguous: Yes  
Permitted: Yes  
Wet space: No  
Addition: No  
Conversion: No

### 20 Floor 3 - W.I.C.

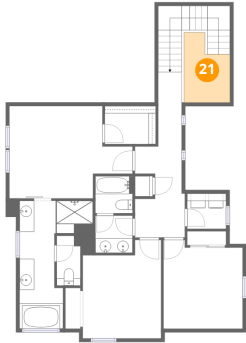


Dimensions: 7'0" x 5'2"  
Area: 36 sq. ft  
Counted as living area: Yes

Heated: Yes  
Finished: Yes  
Enclosed: Yes  
Contiguous: Yes  
Permitted: Yes  
Wet space: No  
Addition: No  
Conversion: No

**21** Floor 3 - Open To Below

---



Dimensions: 6'3" x 9'6"  
Area: 60 sq. ft  
Counted as living area: No

Heated: No  
Finished: No  
Enclosed: No  
Contiguous: Yes  
Permitted: No  
Wet space: No  
Addition: No  
Conversion: No

**22** Floor 3 - Bedroom

---



Dimensions: 10'9" x 13'5"  
Area: 144 sq. ft  
Counted as living area: Yes

Heated: Yes  
Finished: Yes  
Enclosed: Yes  
Contiguous: Yes  
Permitted: Yes  
Wet space: No  
Addition: No  
Conversion: No