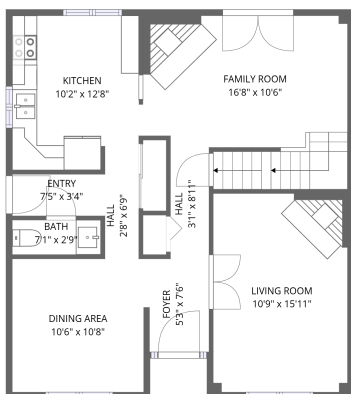
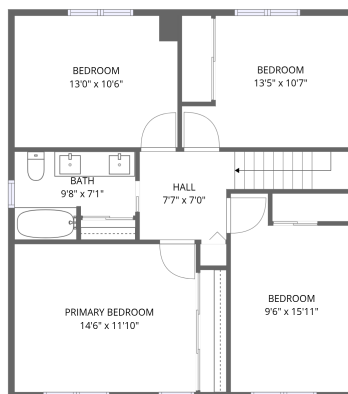


## Home data report

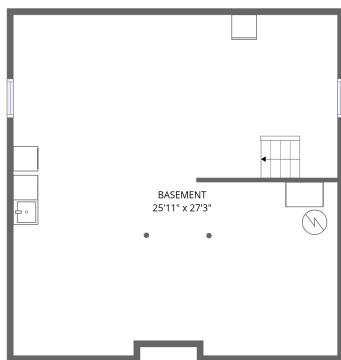
1122 St-Germain Crescent, Orléans North West, Hiawatha Park,  
Orléans, Ontario, Canada, K1C 2L8



1st floor



2nd floor



Basement

**Total Area: 1598 sq. ft**

Basement: 0 sq. ft, 1st Floor: 790 sq. ft, 2nd Floor: 808 sq. ft

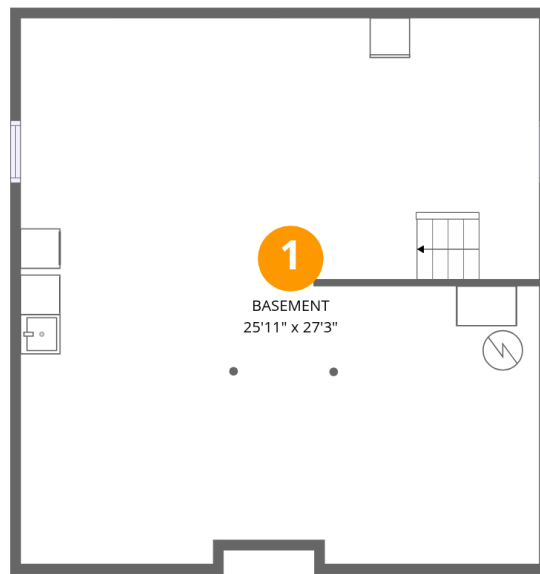
Excluded: Basement 702 sq. ft, Walls: 175 sq. ft

## Property summary



## Home data report

1122 St-Germain Crescent, Orléans North West, Hiawatha Park,  
Orléans, Ontario, Canada, K1C 2L8



## Room dimensions

Floor 1 Below grade

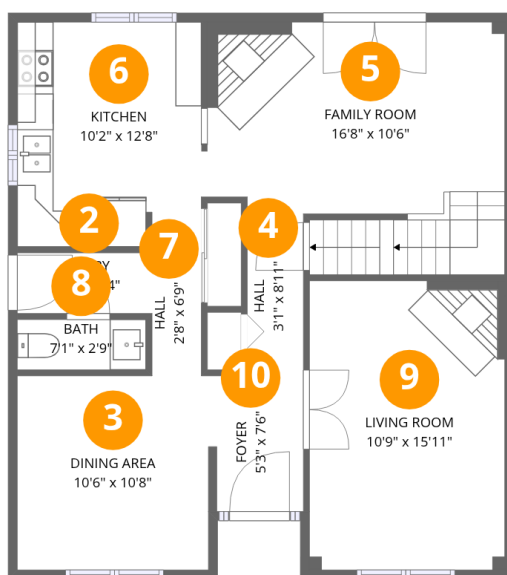
Total:0sqft

Excluded: 702sqft

#		Dimensions	sqft	Counted as living area
1	Basement	25'11" x 27'3"	697 sq. ft	No

## Home data report

1122 St-Germain Crescent, Orléans North West, Hiawatha Park,  
Orléans, Ontario, Canada, K1C 2L8



## Room dimensions

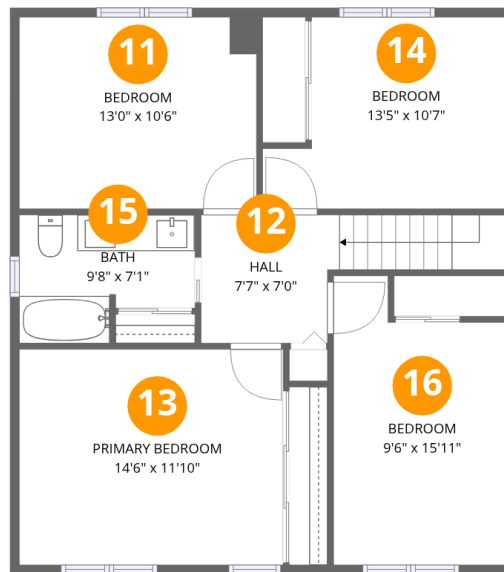
Floor 2

Total:790sqft Excluded: 0sqft

#		Dimensions	sqft	Counted as living area
2	Entry	7'5" x 3'4"	25 sq. ft	Yes
3	Dining Area	10'6" x 10'8"	112 sq. ft	Yes
4	Hall	3'1" x 8'11"	28 sq. ft	Yes
5	Family Room	16'8" x 10'6"	206 sq. ft	Yes
6	Kitchen	10'2" x 12'8"	125 sq. ft	Yes
7	Hall	2'8" x 6'9"	18 sq. ft	Yes
8	Bath	7'1" x 2'9"	20 sq. ft	Yes
9	Living Room	10'9" x 15'11"	171 sq. ft	Yes
10	Foyer	5'3" x 7'6"	37 sq. ft	Yes

## Home data report

1122 St-Germain Crescent, Orléans North West, Hiawatha Park,  
Orléans, Ontario, Canada, K1C 2L8



## Room dimensions

Floor 3

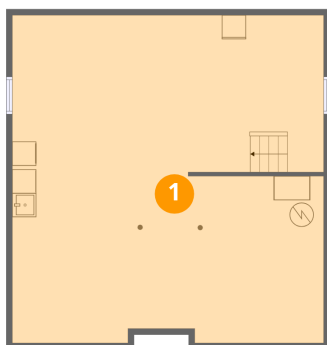
Total:808sqft

Excluded: 0sqft

#		Dimensions	sqft	Counted as living area
11	Bedroom	13'0" x 10'6"	138 sq. ft	Yes
12	Hall	7'7" x 7'0"	79 sq. ft	Yes
13	Primary Bedroom	14'6" x 11'10"	172 sq. ft	Yes
14	Bedroom	13'5" x 10'7"	122 sq. ft	Yes
15	Bath	9'8" x 7'1"	59 sq. ft	Yes
16	Bedroom	9'6" x 15'11"	135 sq. ft	Yes

1122 St-Germain Crescent, Orléans North West, Hiawatha Park,  
Orléans, Ontario, Canada, K1C 2L8

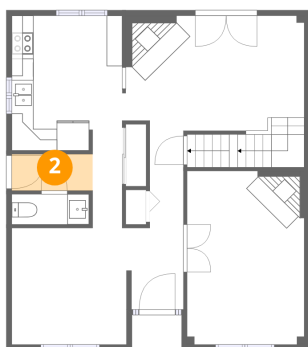
## 1 Floor 1 - Basement



Dimensions: 25'11" x 27'3"  
Area: 697 sq. ft  
Counted as living area: No

Heated: Yes  
Finished: No  
Enclosed: Yes  
Contiguous: Yes  
Permitted: Yes  
Wet space: No  
Addition: No  
Conversion: No

## 2 Floor 2 - Entry

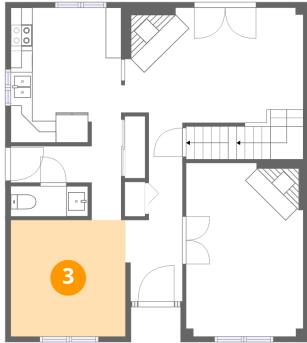


Dimensions: 7'5" x 3'4"  
Area: 25 sq. ft  
Counted as living area: Yes

Heated: Yes  
Finished: Yes  
Enclosed: Yes  
Contiguous: Yes  
Permitted: Yes  
Wet space: No  
Addition: No  
Conversion: No

1122 St-Germain Crescent, Orléans North West, Hiawatha Park,  
Orléans, Ontario, Canada, K1C 2L8

**3** Floor 2 - Dining Area



Dimensions: 10'6" x 10'8"  
Area: 112 sq. ft  
Counted as living area: Yes

Heated: Yes  
Finished: Yes  
Enclosed: Yes  
Contiguous: Yes  
Permitted: Yes  
Wet space: No  
Addition: No  
Conversion: No

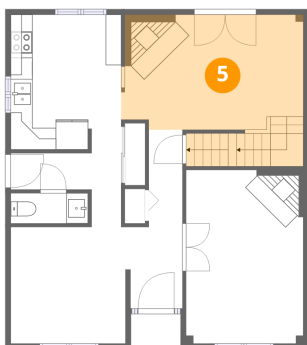
**4** Floor 2 - Hall



Dimensions: 3'1" x 8'11"  
Area: 28 sq. ft  
Counted as living area: Yes

Heated: Yes  
Finished: Yes  
Enclosed: Yes  
Contiguous: Yes  
Permitted: Yes  
Wet space: No  
Addition: No  
Conversion: No

**5** Floor 2 - Family Room



Dimensions: 16'8" x 10'6"  
Area: 206 sq. ft  
Counted as living area: Yes

Heated: Yes  
Finished: Yes  
Enclosed: Yes  
Contiguous: Yes  
Permitted: Yes  
Wet space: No  
Addition: No  
Conversion: No

1122 St-Germain Crescent, Orléans North West, Hiawatha Park,  
Orléans, Ontario, Canada, K1C 2L8

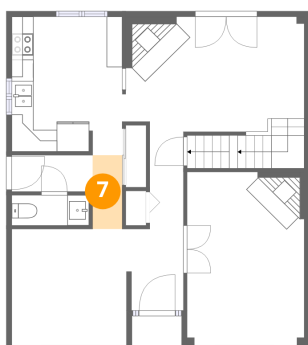
**6** Floor 2 - Kitchen



Dimensions: 10'2" x 12'8"  
Area: 125 sq. ft  
Counted as living area: Yes

Heated: Yes  
Finished: Yes  
Enclosed: Yes  
Contiguous: Yes  
Permitted: Yes  
Wet space: No  
Addition: No  
Conversion: No

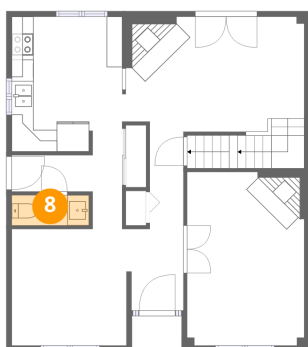
**7** Floor 2 - Hall



Dimensions: 2'8" x 6'9"  
Area: 18 sq. ft  
Counted as living area: Yes

Heated: Yes  
Finished: Yes  
Enclosed: Yes  
Contiguous: Yes  
Permitted: Yes  
Wet space: No  
Addition: No  
Conversion: No

**8** Floor 2 - Bath



Dimensions: 7'1" x 2'9"  
Area: 20 sq. ft  
Counted as living area: Yes

Heated: Yes  
Finished: Yes  
Enclosed: Yes  
Contiguous: Yes  
Permitted: Yes  
Wet space: Yes  
Addition: No  
Conversion: No

1122 St-Germain Crescent, Orléans North West, Hiawatha Park,  
Orléans, Ontario, Canada, K1C 2L8

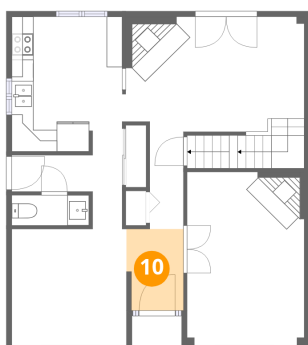
**9** Floor 2 - Living Room



Dimensions: 10'9" x 15'11"  
Area: 171 sq. ft  
Counted as living area: Yes

Heated: Yes  
Finished: Yes  
Enclosed: Yes  
Contiguous: Yes  
Permitted: Yes  
Wet space: No  
Addition: No  
Conversion: No

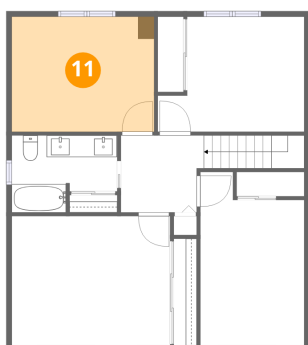
**10** Floor 2 - Foyer



Dimensions: 5'3" x 7'6"  
Area: 37 sq. ft  
Counted as living area: Yes

Heated: Yes  
Finished: Yes  
Enclosed: Yes  
Contiguous: Yes  
Permitted: Yes  
Wet space: No  
Addition: No  
Conversion: No

**11** Floor 3 - Bedroom

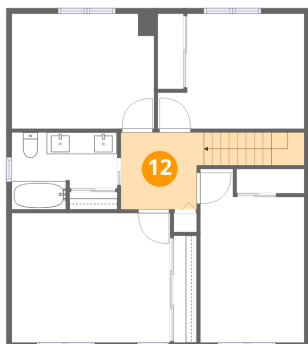


Dimensions: 13'0" x 10'6"  
Area: 138 sq. ft  
Counted as living area: Yes

Heated: Yes  
Finished: Yes  
Enclosed: Yes  
Contiguous: Yes  
Permitted: Yes  
Wet space: No  
Addition: No  
Conversion: No

1122 St-Germain Crescent, Orléans North West, Hiawatha Park,  
Orléans, Ontario, Canada, K1C 2L8

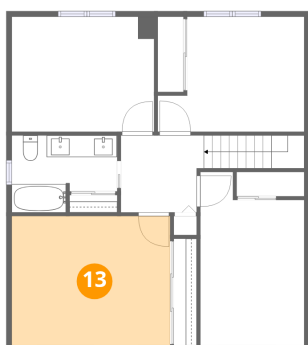
### 12 Floor 3 - Hall



Dimensions: 7'7" x 7'0"  
Area: 79 sq. ft  
Counted as living area: Yes

Heated: Yes  
Finished: Yes  
Enclosed: Yes  
Contiguous: Yes  
Permitted: Yes  
Wet space: No  
Addition: No  
Conversion: No

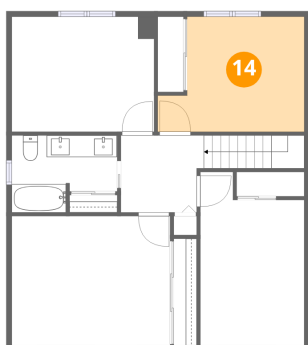
### 13 Floor 3 - Primary Bedroom



Dimensions: 14'6" x 11'10"  
Area: 172 sq. ft  
Counted as living area: Yes

Heated: Yes  
Finished: Yes  
Enclosed: Yes  
Contiguous: Yes  
Permitted: Yes  
Wet space: No  
Addition: No  
Conversion: No

### 14 Floor 3 - Bedroom



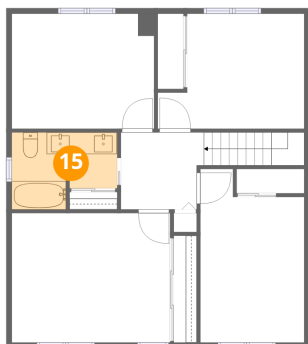
Dimensions: 13'5" x 10'7"  
Area: 122 sq. ft  
Counted as living area: Yes

Heated: Yes  
Finished: Yes  
Enclosed: Yes  
Contiguous: Yes  
Permitted: Yes  
Wet space: No  
Addition: No  
Conversion: No

1122 St-Germain Crescent, Orléans North West, Hiawatha Park,  
Orléans, Ontario, Canada, K1C 2L8

**15** Floor 3 - Bath

---

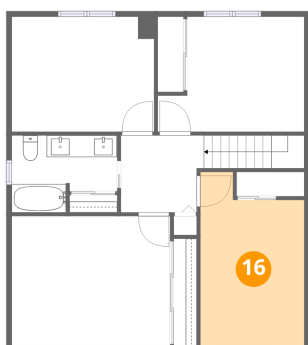


Dimensions: 9'8" x 7'1"  
Area: 59 sq. ft  
Counted as living area: Yes

Heated: Yes  
Finished: Yes  
Enclosed: Yes  
Contiguous: Yes  
Permitted: Yes  
Wet space: Yes  
Addition: No  
Conversion: No

**16** Floor 3 - Bedroom

---



Dimensions: 9'6" x 15'11"  
Area: 135 sq. ft  
Counted as living area: Yes

Heated: Yes  
Finished: Yes  
Enclosed: Yes  
Contiguous: Yes  
Permitted: Yes  
Wet space: No  
Addition: No  
Conversion: No