



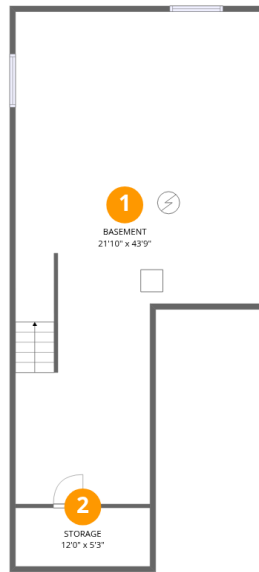
Total Area: 1739 sq. ft

Basement: 0 sq. ft, 1st Floor: 771 sq. ft, 2nd Floor: 968 sq. ft

Excluded: Storage 260 sq. ft, Basement 780 sq. ft, Porch 53 sq. ft, Deck 63 sq. ft, Fireplace 10 sq. ft, Open to below 10 sq. ft, Walls: 223 sq. ft

Property summary





Room dimensions

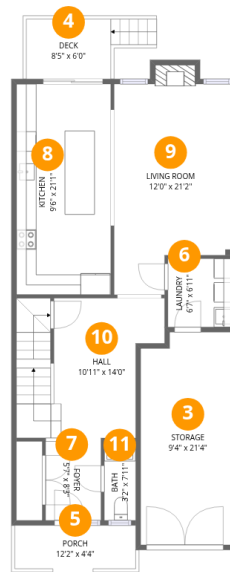
Floor 1 Below grade

Total:0sqft

Excluded: 846sqft

#		Dimensions	sqft	Counted as living area
1	Basement	21'10" x 43'9"	780 sq. ft	No
2	Storage	12'0" x 5'3"	62 sq. ft	No

54 Tyndall Dr, Bradford West Gwillimbury, ON, CA



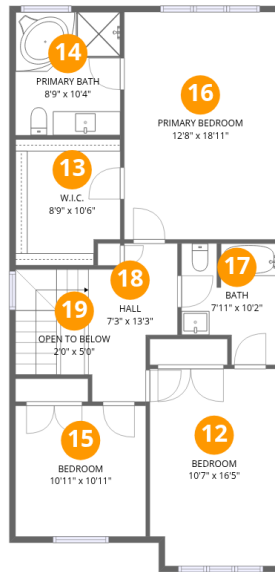
Room dimensions

Floor 2

Total: 771 sqft

Excluded: 320 sqft

#		Dimensions	sqft	Counted as living area
3	Storage	9'4" x 21'4"	194 sq. ft	No
4	Deck	8'5" x 6'0"	63 sq. ft	No
5	Porch	12'2" x 4'4"	53 sq. ft	No
6	Laundry	6'7" x 6'11"	45 sq. ft	Yes
7	Foyer	5'7" x 8'3"	46 sq. ft	Yes
8	Kitchen	9'6" x 21'1"	200 sq. ft	Yes
9	Living Room	12'0" x 21'2"	234 sq. ft	Yes
10	Hall	10'11" x 14'0"	180 sq. ft	Yes
11	Bath	3'2" x 7'11"	25 sq. ft	Yes



Room dimensions

Floor 3

Total:968sqft Excluded: 10sqft

#		Dimensions	sqft	Counted as living area
12	Bedroom	10'7" x 16'5"	171 sq. ft	Yes
13	W.I.C.	8'9" x 10'6"	87 sq. ft	Yes
14	Primary Bath	8'9" x 10'4"	90 sq. ft	Yes
15	Bedroom	10'11" x 10'11"	119 sq. ft	Yes
16	Primary Bedroom	12'8" x 18'11"	242 sq. ft	Yes
17	Bath	7'11" x 10'2"	69 sq. ft	Yes
18	Hall	7'3" x 13'3"	120 sq. ft	Yes
19	Open To Below	2'0" x 5'0"	10 sq. ft	No

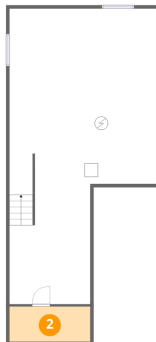
1 Floor 1 - Basement



Dimensions: 21'10" x 43'9"
Area: 780 sq. ft
Counted as living area: No

Heated: Yes
Finished: No
Enclosed: Yes
Contiguous: Yes
Permitted: Yes
Wet space: No
Addition: No
Conversion: No

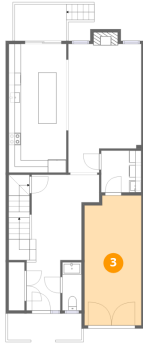
2 Floor 1 - Storage



Dimensions: 12'0" x 5'3"
Area: 62 sq. ft
Counted as living area: No

Heated: No
Finished: No
Enclosed: No
Contiguous: Yes
Permitted: Yes
Wet space: No
Addition: No
Conversion: No

3 Floor 2 - Storage



Dimensions: 9'4" x 21'4"
Area: 194 sq. ft
Counted as living area: No

Heated: No
Finished: No
Enclosed: No
Contiguous: Yes
Permitted: Yes
Wet space: No
Addition: No
Conversion: No

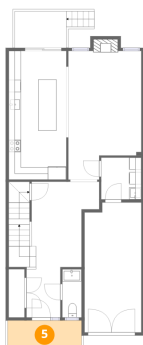
4 Floor 2 - Deck



Dimensions: 8'5" x 6'0"
Area: 63 sq. ft
Counted as living area: No

Heated: No
Finished: No
Enclosed: No
Contiguous: Yes
Permitted: Yes
Wet space: No
Addition: No
Conversion: No

5 Floor 2 - Porch



Dimensions: 12'2" x 4'4"
Area: 53 sq. ft
Counted as living area: No

Heated: No
Finished: No
Enclosed: No
Contiguous: Yes
Permitted: Yes
Wet space: No
Addition: No
Conversion: No

6 Floor 2 - Laundry



Dimensions: 6'7" x 6'11"
Area: 45 sq. ft
Counted as living area: Yes

Heated: Yes
Finished: Yes
Enclosed: Yes
Contiguous: Yes
Permitted: Yes
Wet space: No
Addition: No
Conversion: No

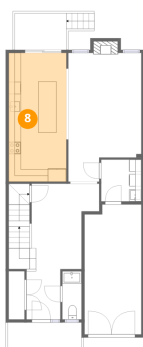
7 Floor 2 - Foyer



Dimensions: 5'7" x 8'3"
Area: 46 sq. ft
Counted as living area: Yes

Heated: Yes
Finished: Yes
Enclosed: Yes
Contiguous: Yes
Permitted: Yes
Wet space: No
Addition: No
Conversion: No

8 Floor 2 - Kitchen



Dimensions: 9'6" x 21'1"
Area: 200 sq. ft
Counted as living area: Yes

Heated: Yes
Finished: Yes
Enclosed: Yes
Contiguous: Yes
Permitted: Yes
Wet space: No
Addition: No
Conversion: No

9 Floor 2 - Living Room



Dimensions: 12'0" x 21'2"
Area: 234 sq. ft
Counted as living area: Yes

Heated: Yes
Finished: Yes
Enclosed: Yes
Contiguous: Yes
Permitted: Yes
Wet space: No
Addition: No
Conversion: No

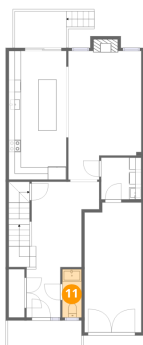
10 Floor 2 - Hall



Dimensions: 10'11" x 14'0"
Area: 180 sq. ft
Counted as living area: Yes

Heated: Yes
Finished: Yes
Enclosed: Yes
Contiguous: Yes
Permitted: Yes
Wet space: No
Addition: No
Conversion: No

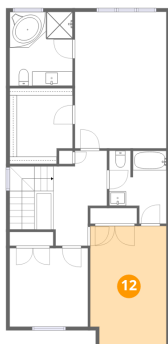
11 Floor 2 - Bath



Dimensions: 3'2" x 7'11"
Area: 25 sq. ft
Counted as living area: Yes

Heated: Yes
Finished: Yes
Enclosed: Yes
Contiguous: Yes
Permitted: Yes
Wet space: Yes
Addition: No
Conversion: No

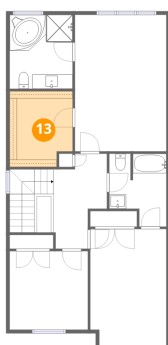
12 Floor 3 - Bedroom



Dimensions: 10'7" x 16'5"
Area: 171 sq. ft
Counted as living area: Yes

Heated: Yes
Finished: Yes
Enclosed: Yes
Contiguous: Yes
Permitted: Yes
Wet space: No
Addition: No
Conversion: No

13 Floor 3 - W.I.C.



Dimensions: 8'9" x 10'6"
Area: 87 sq. ft
Counted as living area: Yes

Heated: Yes
Finished: Yes
Enclosed: Yes
Contiguous: Yes
Permitted: Yes
Wet space: No
Addition: No
Conversion: No

14 Floor 3 - Primary Bath



Dimensions: 8'9" x 10'4"
Area: 90 sq. ft
Counted as living area: Yes

Heated: Yes
Finished: Yes
Enclosed: Yes
Contiguous: Yes
Permitted: Yes
Wet space: Yes
Addition: No
Conversion: No

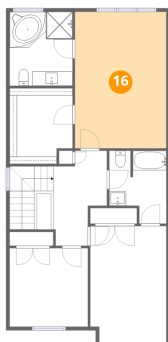
15 Floor 3 - Bedroom



Dimensions: 10'11" x 10'11"
Area: 119 sq. ft
Counted as living area: Yes

Heated: Yes
Finished: Yes
Enclosed: Yes
Contiguous: Yes
Permitted: Yes
Wet space: No
Addition: No
Conversion: No

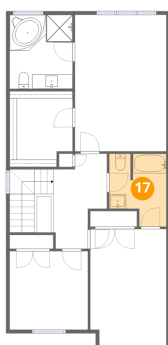
16 Floor 3 - Primary Bedroom



Dimensions: 12'8" x 18'11"
Area: 242 sq. ft
Counted as living area: Yes

Heated: Yes
Finished: Yes
Enclosed: Yes
Contiguous: Yes
Permitted: Yes
Wet space: No
Addition: No
Conversion: No

17 Floor 3 - Bath



Dimensions: 7'11" x 10'2"
Area: 69 sq. ft
Counted as living area: Yes

Heated: Yes
Finished: Yes
Enclosed: Yes
Contiguous: Yes
Permitted: Yes
Wet space: Yes
Addition: No
Conversion: No

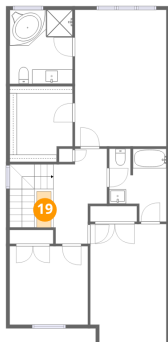
18 Floor 3 - Hall



Dimensions: 7'3" x 13'3"
Area: 120 sq. ft
Counted as living area: Yes

Heated: Yes
Finished: Yes
Enclosed: Yes
Contiguous: Yes
Permitted: Yes
Wet space: No
Addition: No
Conversion: No

19 Floor 3 - Open To Below



Dimensions: 2'0" x 5'0"
Area: 10 sq. ft
Counted as living area: No

Heated: No
Finished: No
Enclosed: No
Contiguous: Yes
Permitted: No
Wet space: No
Addition: No
Conversion: No