

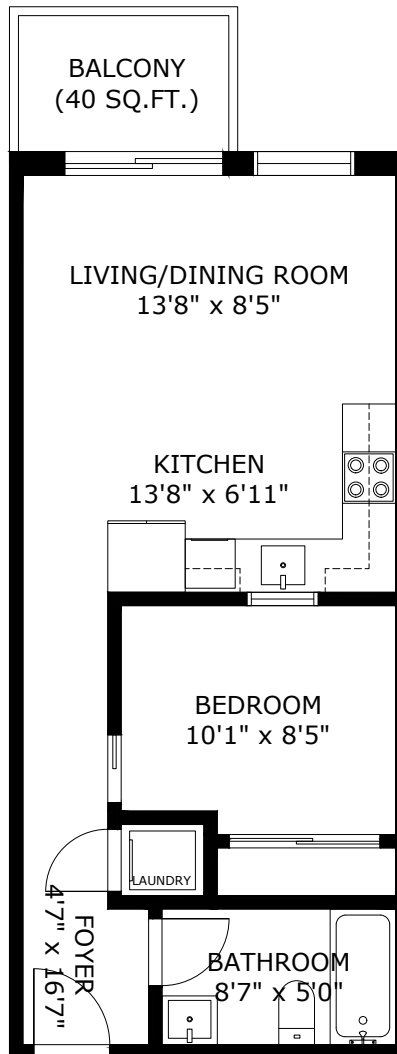
2303-2180 Kelly Ave

Port Coquitlam BC V3C 0S5

Total Area 495 SQ.FT.

Balcony Area: 40 SQ.FT.

Ceiling Height: 9'0"



1
BEDROOMS

1
BATHROOMS

495
TOTAL SQ.FT.

2303-2180 KELLY AVE PORT COQUITLAM BC V3C 0S5

Measurements are approximate and may not be to scale. Gross measurements provided by agent.
The floor plan illustration is not suitable for construction/architectural purposes.
This communication is not intended to cause or induce breach of an existing agency agreement