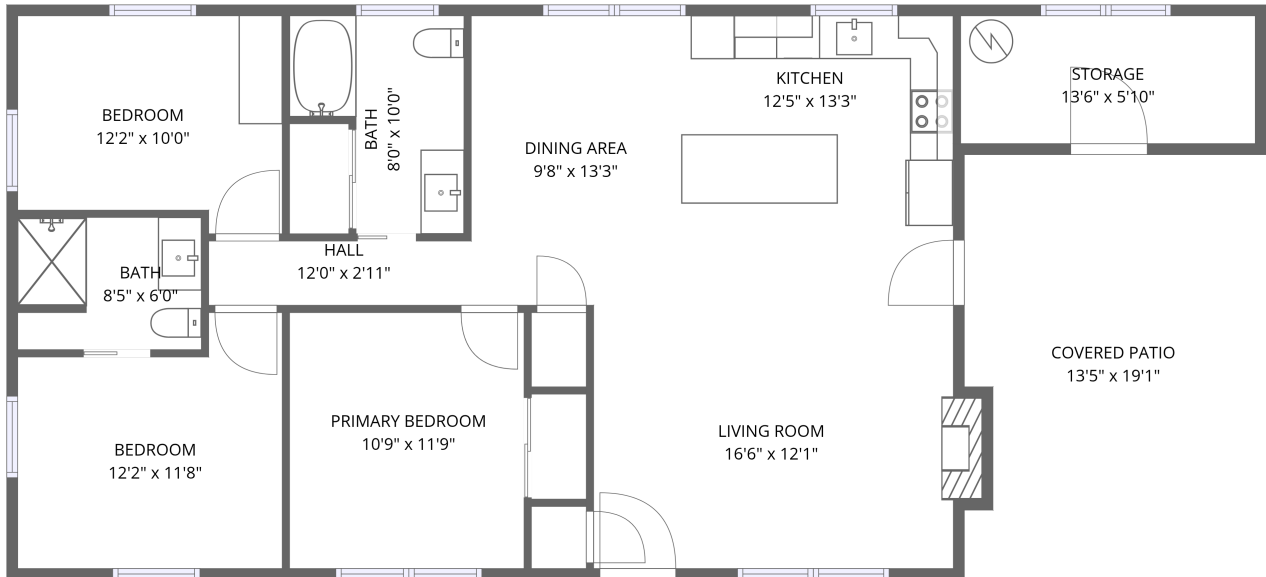


Home data report

**1232 Prillaman Switch Road, Ferrum, Franklin County, Virginia,
United States, 24088**



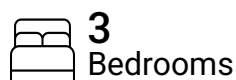
1st floor

Total Area: 1092 sq. ft

1st Floor: 1092 sq. ft

Excluded: Storage 79 sq. ft, Covered patio 251 sq. ft, Fireplace 7 sq. ft, Walls: 81 sq. ft

Property summary



Home data report

1232 Prillaman Switch Road, Ferrum, Franklin County, Virginia, United States, 24088



Room dimensions

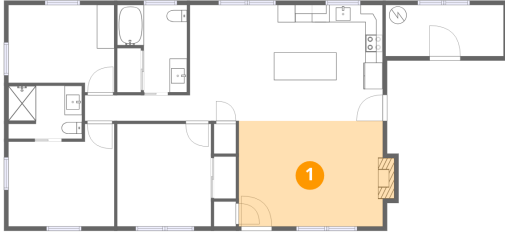
Floor 1

Total:1092sqft Excluded: 337sqft

#		Dimensions	sqft	Counted as living area
1	Living Room	16'6" x 12'1"	199 sq. ft	Yes
2	Kitchen	12'5" x 13'3"	165 sq. ft	Yes
3	Primary Bedroom	10'9" x 11'9"	126 sq. ft	Yes
4	Bath	8'0" x 10'0"	80 sq. ft	Yes
5	Bedroom	12'2" x 11'8"	142 sq. ft	Yes
6	Storage	13'6" x 5'10"	78 sq. ft	No
7	Covered Patio	13'5" x 19'1"	257 sq. ft	No
8	Bath	8'5" x 6'0"	51 sq. ft	Yes
9	Dining Area	9'8" x 13'3"	128 sq. ft	Yes
10	Bedroom	12'2" x 10'0"	121 sq. ft	Yes
11	Hall	12'0" x 2'11"	35 sq. ft	Yes

1232 Prillaman Switch Road, Ferrum, Franklin County, Virginia,
United States, 24088

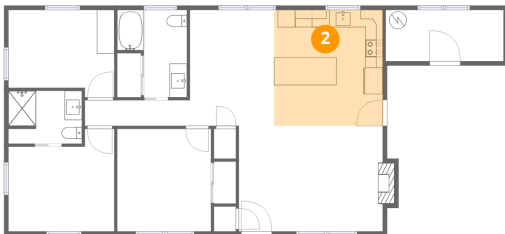
1 Floor 1 - Living Room



Dimensions: 16'6" x 12'1"
Area: 199 sq. ft
Counted as living area: Yes

Heated: Yes
Finished: Yes
Enclosed: Yes
Contiguous: Yes
Permitted: Yes
Wet space: No
Addition: No
Conversion: No

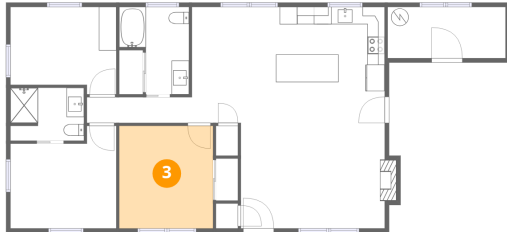
2 Floor 1 - Kitchen



Dimensions: 12'5" x 13'3"
Area: 165 sq. ft
Counted as living area: Yes

Heated: Yes
Finished: Yes
Enclosed: Yes
Contiguous: Yes
Permitted: Yes
Wet space: No
Addition: No
Conversion: No

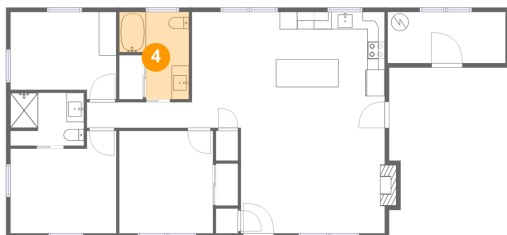
3 Floor 1 - Primary Bedroom



Dimensions: 10'9" x 11'9"
Area: 126 sq. ft
Counted as living area: Yes

Heated: Yes
Finished: Yes
Enclosed: Yes
Contiguous: Yes
Permitted: Yes
Wet space: No
Addition: No
Conversion: No

4 Floor 1 - Bath



Dimensions: 8'0" x 10'0"
Area: 80 sq. ft
Counted as living area: Yes

Heated: Yes
Finished: Yes
Enclosed: Yes
Contiguous: Yes
Permitted: Yes
Wet space: Yes
Addition: No
Conversion: No

5 Floor 1 - Bedroom



Dimensions: 12'2" x 11'8"
Area: 142 sq. ft
Counted as living area: Yes

Heated: Yes
Finished: Yes
Enclosed: Yes
Contiguous: Yes
Permitted: Yes
Wet space: No
Addition: No
Conversion: No

6 Floor 1 - Storage



Dimensions: 13'6" x 5'10"
Area: 78 sq. ft
Counted as living area: No

Heated: No
Finished: Yes
Enclosed: No
Contiguous: Yes
Permitted: Yes
Wet space: No
Addition: No
Conversion: No

7 Floor 1 - Covered Patio



Dimensions: 13'5" x 19'1"
Area: 257 sq. ft
Counted as living area: No

Heated: No
Finished: No
Enclosed: No
Contiguous: Yes
Permitted: Yes
Wet space: No
Addition: No
Conversion: No

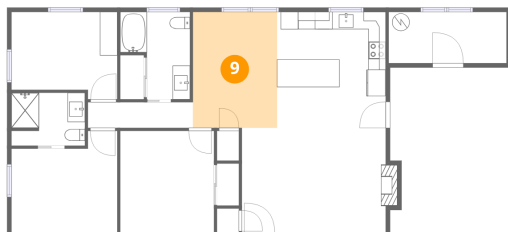
8 Floor 1 - Bath



Dimensions: 8'5" x 6'0"
Area: 51 sq. ft
Counted as living area: Yes

Heated: Yes
Finished: Yes
Enclosed: Yes
Contiguous: Yes
Permitted: Yes
Wet space: Yes
Addition: No
Conversion: No

9 Floor 1 - Dining Area



Dimensions: 9'8" x 13'3"
Area: 128 sq. ft
Counted as living area: Yes

Heated: Yes
Finished: Yes
Enclosed: Yes
Contiguous: Yes
Permitted: Yes
Wet space: No
Addition: No
Conversion: No

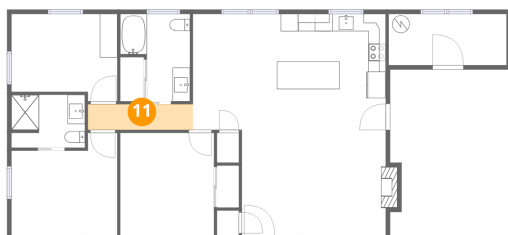
10 Floor 1 - Bedroom



Dimensions: 12'2" x 10'0"
Area: 121 sq. ft
Counted as living area: Yes

Heated: Yes
Finished: Yes
Enclosed: Yes
Contiguous: Yes
Permitted: Yes
Wet space: No
Addition: No
Conversion: No

11 Floor 1 - Hall



Dimensions: 12'0" x 2'11"
Area: 35 sq. ft
Counted as living area: Yes

Heated: Yes
Finished: Yes
Enclosed: Yes
Contiguous: Yes
Permitted: Yes
Wet space: No
Addition: No
Conversion: No