

Home data report

1141 Sheridan Road, Wilmette, Cook County, Illinois, United States, 60091



Total Area: 6461 sq. ft

1st Floor: 541 sq. ft, 2nd Floor: 871 sq. ft, 3rd Floor: 2310 sq. ft, 4th Floor: 1942 sq. ft, 5th Floor: 797 sq. ft

Excluded: Cl 82 sq. ft, Utility 428 sq. ft, Storage 201 sq. ft, Undefined 6 sq. ft, Garage 583 sq. ft, Porch 55 sq. ft, Patio 590 sq. ft, Balcony 81 sq. ft, Attic 474 sq. ft, Walls: 502 sq. ft

Property summary



Home data report

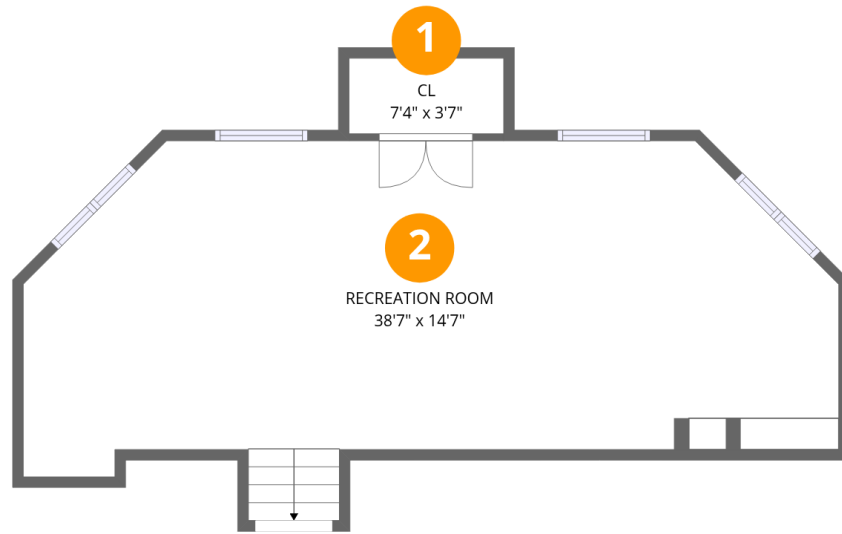
1141 Sheridan Road, Wilmette, Cook County, Illinois, United States, 60091

 **2**
Half baths

 **1**
Garages

Home data report

1141 Sheridan Road, Wilmette, Cook County, Illinois, United States, 60091



Room dimensions

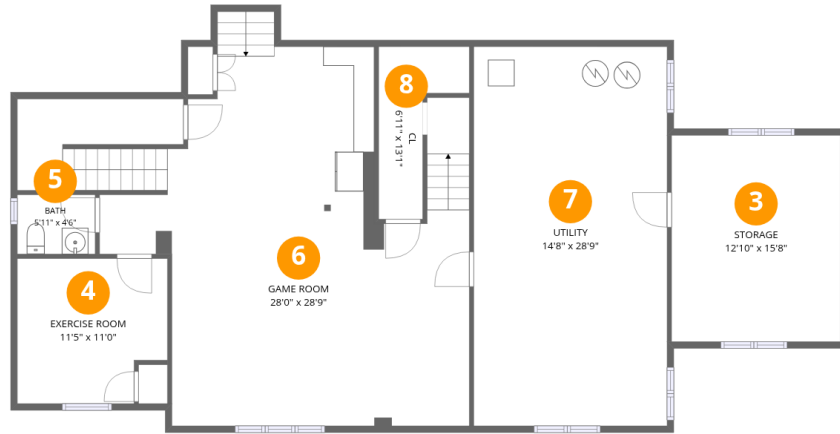
Floor 1

Total:541sqft Excluded: 26sqft

#		Dimensions	sqft	Counted as living area
1	CL	7'4" x 3'7"	26 sq. ft	No
2	Recreation Room	38'7" x 14'7"	537 sq. ft	Yes

Home data report

1141 Sheridan Road, Wilmette, Cook County, Illinois, United States, 60091



Room dimensions

Floor 2

Total:871sqft Excluded: 691sqft

#		Dimensions	sqft	Counted as living area
3	Storage	12'10" x 15'8"	201 sq. ft	No
4	Exercise Room	11'5" x 11'0"	117 sq. ft	Yes
5	Bath	5'11" x 4'6"	27 sq. ft	Yes
6	Game Room	28'0" x 28'9"	682 sq. ft	Yes
7	Utility	14'8" x 28'9"	421 sq. ft	No
8	Cl	6'11" x 13'1"	56 sq. ft	No

Home data report

1141 Sheridan Road, Wilmette, Cook County, Illinois, United States, 60091



Room dimensions

Floor 3

Total:2310sqft

Excluded: 1228sqft

#		Dimensions	sqft	Counted as living area
9	Office	12'8" x 15'8"	198 sq. ft	Yes
10	Porch	7'8" x 5'6"	55 sq. ft	No
11	Garage	30'9" x 18'11"	583 sq. ft	No
12	Hall	15'5" x 8'8"	86 sq. ft	Yes
13	Patio	23'4" x 33'9"	590 sq. ft	No
14	Hall	12'3" x 10'11"	140 sq. ft	Yes
15	Bath	7'1" x 3'10"	27 sq. ft	Yes
16	Office	12'2" x 15'10"	193 sq. ft	Yes
17	Family Room	16'0" x 21'1"	250 sq. ft	Yes
18	Foyer	7'2" x 3'5"	25 sq. ft	Yes
19	Dining Room	15'1" x 13'11"	210 sq. ft	Yes

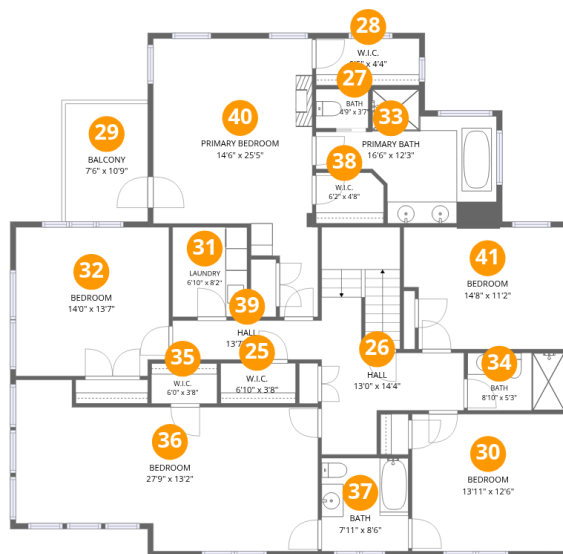
Home data report

1141 Sheridan Road, Wilmette, Cook County, Illinois, United States, 60091

#		Dimensions	sqft	Counted as living area
20	Living Room	14'6" x 31'9"	447 sq. ft	Yes
21	Entry	7'3" x 7'11"	57 sq. ft	Yes
22	Kitchen	15'5" x 23'11"	321 sq. ft	Yes
23	Breakfast Area	7'2" x 15'4"	92 sq. ft	Yes
24	Hall	7'2" x 19'10"	161 sq. ft	Yes

Home data report

1141 Sheridan Road, Wilmette, Cook County, Illinois, United States, 60091



Room dimensions

Floor 4

Total:1942sqft Excluded: 81sqft

#		Dimensions	sqft	Counted as living area
25	W.I.C.	6'10" x 3'8"	25 sq. ft	Yes
26	Hall	13'0" x 14'4"	168 sq. ft	Yes
27	Bath	4'9" x 3'7"	17 sq. ft	Yes
28	W.I.C.	9'5" x 4'4"	41 sq. ft	Yes
29	Balcony	7'6" x 10'9"	81 sq. ft	No
30	Bedroom	13'11" x 12'6"	174 sq. ft	Yes
31	Laundry	6'10" x 8'2"	56 sq. ft	Yes
32	Bedroom	14'0" x 13'7"	187 sq. ft	Yes
33	Primary Bath	16'6" x 12'3"	134 sq. ft	Yes
34	Bath	8'10" x 5'3"	46 sq. ft	Yes
35	W.I.C.	6'0" x 3'8"	22 sq. ft	Yes

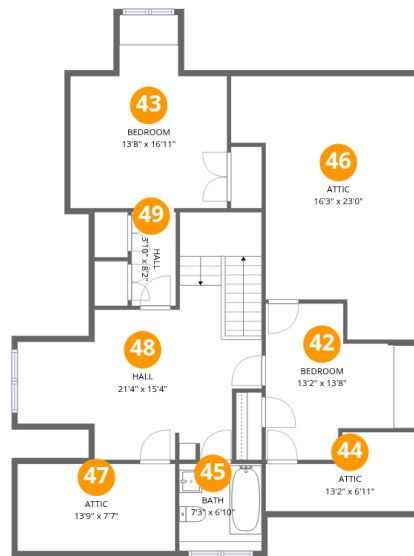
Home data report

1141 Sheridan Road, Wilmette, Cook County, Illinois, United States, 60091

#		Dimensions	sqft	Counted as living area
36	Bedroom	27'9" x 13'2"	344 sq. ft	Yes
37	Bath	7'11" x 8'6"	67 sq. ft	Yes
38	W.I.C.	6'2" x 4'8"	28 sq. ft	Yes
39	Hall	13'7" x 3'7"	49 sq. ft	Yes
40	Primary Bedroom	14'6" x 25'5"	283 sq. ft	Yes
41	Bedroom	14'8" x 11'2"	156 sq. ft	Yes

Home data report

1141 Sheridan Road, Wilmette, Cook County, Illinois, United States, 60091



Room dimensions

Floor 5

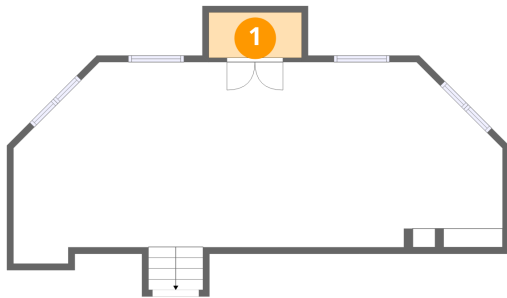
Total:797sqft

Excluded: 474sqft

#		Dimensions	sqft	Counted as living area
42	Bedroom	13'2" x 13'8"	139 sq. ft	Yes
43	Bedroom	13'8" x 16'11"	186 sq. ft	Yes
44	Attic	13'2" x 6'11"	73 sq. ft	No
45	Bath	7'3" x 6'10"	55 sq. ft	Yes
46	Attic	16'3" x 23'0"	296 sq. ft	No
47	Attic	13'9" x 7'7"	105 sq. ft	No
48	Hall	21'4" x 15'4"	284 sq. ft	Yes
49	Hall	3'10" x 8'2"	32 sq. ft	Yes

1141 Sheridan Road, Wilmette, Cook County, Illinois, United States, 60091

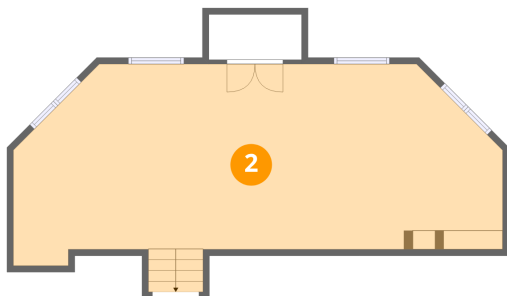
1 Floor 1 - Cl



Dimensions: 7'4" x 3'7"
Area: 26 sq. ft
Counted as living area: No

Heated: Yes
Finished: No
Enclosed: Yes
Contiguous: Yes
Permitted: Yes
Wet space: No
Addition: No
Conversion: No

2 Floor 1 - Recreation Room



Dimensions: 38'7" x 14'7"
Area: 537 sq. ft
Counted as living area: Yes

Heated: Yes
Finished: Yes
Enclosed: Yes
Contiguous: Yes
Permitted: Yes
Wet space: No
Addition: No
Conversion: No

1141 Sheridan Road, Wilmette, Cook County, Illinois, United States, 60091

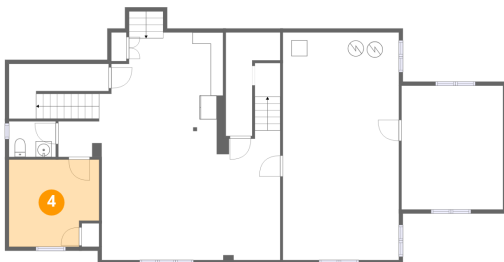
3 Floor 2 - Storage



Dimensions: 12'10" x 15'8"
Area: 201 sq. ft
Counted as living area: No

Heated: No
Finished: No
Enclosed: No
Contiguous: Yes
Permitted: Yes
Wet space: No
Addition: No
Conversion: No

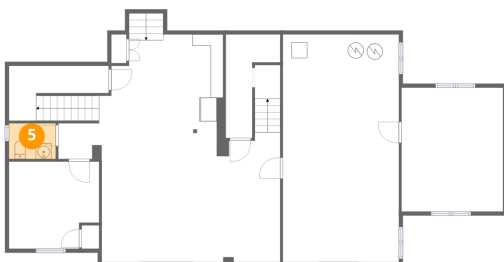
4 Floor 2 - Exercise Room



Dimensions: 11'5" x 11'0"
Area: 117 sq. ft
Counted as living area: Yes

Heated: Yes
Finished: Yes
Enclosed: Yes
Contiguous: Yes
Permitted: Yes
Wet space: No
Addition: No
Conversion: No

5 Floor 2 - Bath

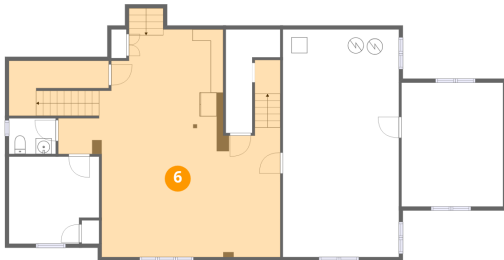


Dimensions: 5'11" x 4'6"
Area: 27 sq. ft
Counted as living area: Yes

Heated: Yes
Finished: Yes
Enclosed: Yes
Contiguous: Yes
Permitted: Yes
Wet space: Yes
Addition: No
Conversion: No

1141 Sheridan Road, Wilmette, Cook County, Illinois, United States, 60091

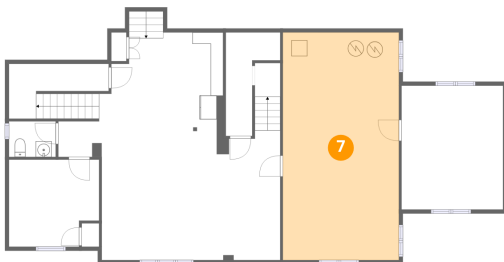
6 Floor 2 - Game Room



Dimensions: 28'0" x 28'9"
Area: 682 sq. ft
Counted as living area: Yes

Heated: Yes
Finished: Yes
Enclosed: Yes
Contiguous: Yes
Permitted: Yes
Wet space: No
Addition: No
Conversion: No

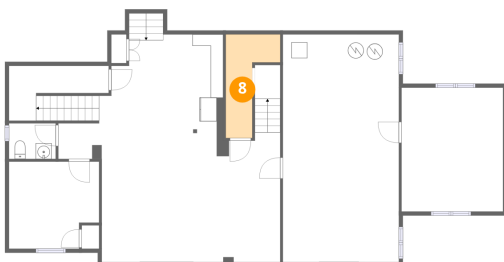
7 Floor 2 - Utility



Dimensions: 14'8" x 28'9"
Area: 421 sq. ft
Counted as living area: No

Heated: Yes
Finished: No
Enclosed: Yes
Contiguous: Yes
Permitted: Yes
Wet space: No
Addition: No
Conversion: No

8 Floor 2 - Cl

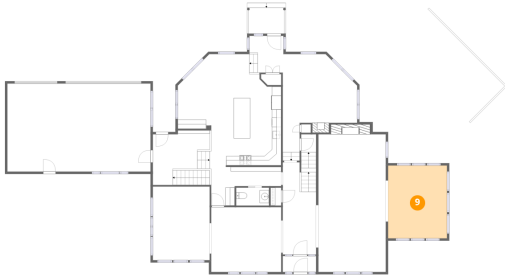


Dimensions: 6'11" x 13'1"
Area: 56 sq. ft
Counted as living area: No

Heated: Yes
Finished: No
Enclosed: Yes
Contiguous: Yes
Permitted: Yes
Wet space: No
Addition: No
Conversion: No

1141 Sheridan Road, Wilmette, Cook County, Illinois, United States, 60091

9 Floor 3 - Office



Dimensions: 12'8" x 15'8"
Area: 198 sq. ft
Counted as living area: Yes

Heated: Yes
Finished: Yes
Enclosed: Yes
Contiguous: Yes
Permitted: Yes
Wet space: No
Addition: No
Conversion: No

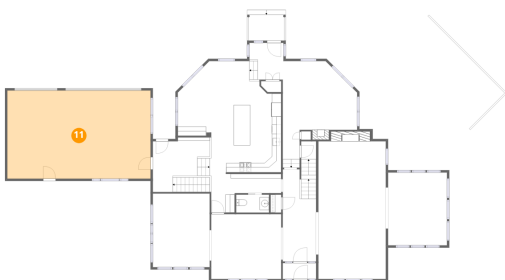
10 Floor 3 - Porch



Dimensions: 7'8" x 5'6"
Area: 55 sq. ft
Counted as living area: No

Heated: No
Finished: No
Enclosed: No
Contiguous: Yes
Permitted: Yes
Wet space: No
Addition: No
Conversion: No

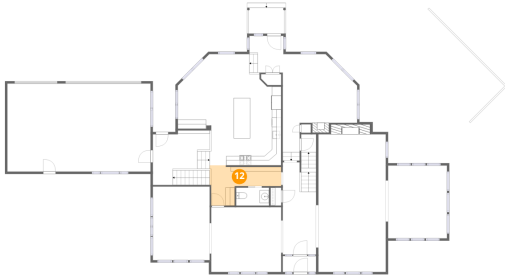
11 Floor 3 - Garage



Dimensions: 30'9" x 18'11"
Area: 583 sq. ft
Counted as living area: No

Heated: No
Finished: No
Enclosed: Yes
Contiguous: Yes
Permitted: Yes
Wet space: No
Addition: No
Conversion: No

12 Floor 3 - Hall



Dimensions: 15'5" x 8'8"
Area: 86 sq. ft
Counted as living area: Yes

Heated: Yes
Finished: Yes
Enclosed: Yes
Contiguous: Yes
Permitted: Yes
Wet space: No
Addition: No
Conversion: No

13 Floor 3 - Patio



Dimensions: 23'4" x 33'9"
Area: 590 sq. ft
Counted as living area: No

Heated: No
Finished: No
Enclosed: No
Contiguous: Yes
Permitted: Yes
Wet space: No
Addition: No
Conversion: No

14 Floor 3 - Hall

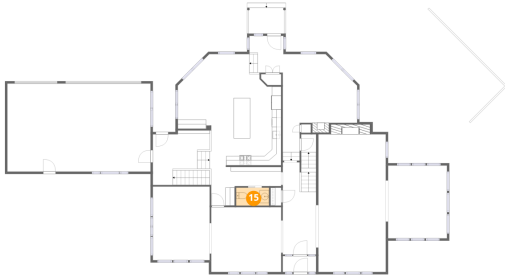


Dimensions: 12'3" x 10'11"
Area: 140 sq. ft
Counted as living area: Yes

Heated: Yes
Finished: Yes
Enclosed: Yes
Contiguous: Yes
Permitted: Yes
Wet space: No
Addition: No
Conversion: No

1141 Sheridan Road, Wilmette, Cook County, Illinois, United States, 60091

15 Floor 3 - Bath



Dimensions: 7'1" x 3'10"
Area: 27 sq. ft
Counted as living area: Yes

Heated: Yes
Finished: Yes
Enclosed: Yes
Contiguous: Yes
Permitted: Yes
Wet space: Yes
Addition: No
Conversion: No

16 Floor 3 - Office



Dimensions: 12'2" x 15'10"
Area: 193 sq. ft
Counted as living area: Yes

Heated: Yes
Finished: Yes
Enclosed: Yes
Contiguous: Yes
Permitted: Yes
Wet space: No
Addition: No
Conversion: No

17 Floor 3 - Family Room

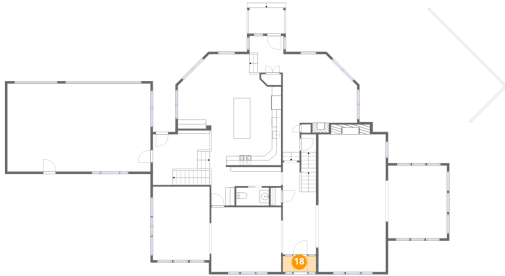


Dimensions: 16'0" x 21'1"
Area: 250 sq. ft
Counted as living area: Yes

Heated: Yes
Finished: Yes
Enclosed: Yes
Contiguous: Yes
Permitted: Yes
Wet space: No
Addition: No
Conversion: No

1141 Sheridan Road, Wilmette, Cook County, Illinois, United States, 60091

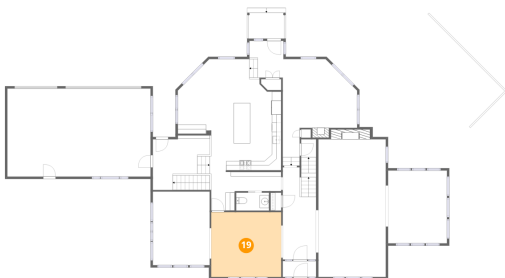
18 Floor 3 - Foyer



Dimensions: 7'2" x 3'5"
Area: 25 sq. ft
Counted as living area: Yes

Heated: Yes
Finished: Yes
Enclosed: Yes
Contiguous: Yes
Permitted: Yes
Wet space: No
Addition: No
Conversion: No

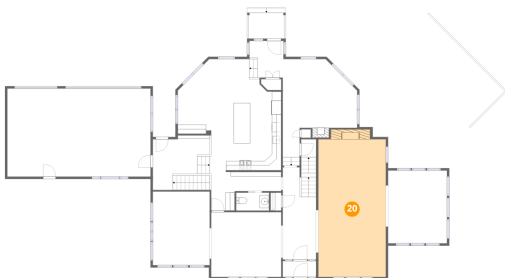
19 Floor 3 - Dining Room



Dimensions: 15'1" x 13'11"
Area: 210 sq. ft
Counted as living area: Yes

Heated: Yes
Finished: Yes
Enclosed: Yes
Contiguous: Yes
Permitted: Yes
Wet space: No
Addition: No
Conversion: No

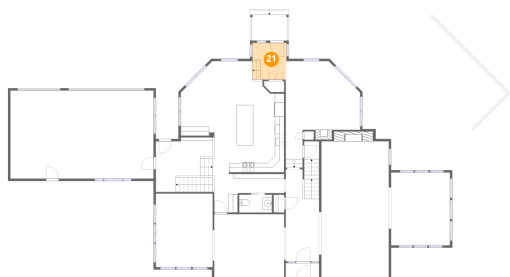
20 Floor 3 - Living Room



Dimensions: 14'6" x 31'9"
Area: 447 sq. ft
Counted as living area: Yes

Heated: Yes
Finished: Yes
Enclosed: Yes
Contiguous: Yes
Permitted: Yes
Wet space: No
Addition: No
Conversion: No

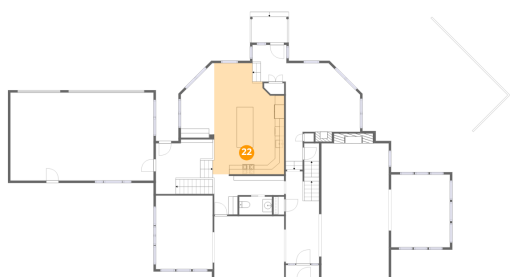
21 Floor 3 - Entry



Dimensions: 7'3" x 7'11"
Area: 57 sq. ft
Counted as living area: Yes

Heated: Yes
Finished: Yes
Enclosed: Yes
Contiguous: Yes
Permitted: Yes
Wet space: No
Addition: No
Conversion: No

22 Floor 3 - Kitchen



Dimensions: 15'5" x 23'11"
Area: 321 sq. ft
Counted as living area: Yes

Heated: Yes
Finished: Yes
Enclosed: Yes
Contiguous: Yes
Permitted: Yes
Wet space: No
Addition: No
Conversion: No

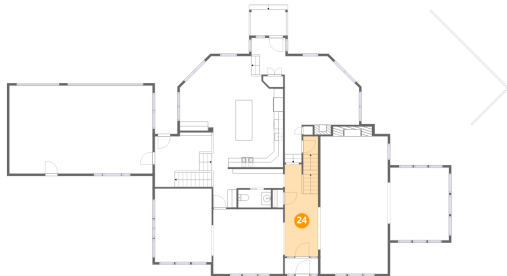
23 Floor 3 - Breakfast Area



Dimensions: 7'2" x 15'4"
Area: 92 sq. ft
Counted as living area: Yes

Heated: Yes
Finished: Yes
Enclosed: Yes
Contiguous: Yes
Permitted: Yes
Wet space: No
Addition: No
Conversion: No

24 Floor 3 - Hall



Dimensions: 7'2" x 19'10"
Area: 161 sq. ft
Counted as living area: Yes

Heated: Yes
Finished: Yes
Enclosed: Yes
Contiguous: Yes
Permitted: Yes
Wet space: No
Addition: No
Conversion: No

25 Floor 4 - W.I.C.



Dimensions: 6'10" x 3'8"
Area: 25 sq. ft
Counted as living area: Yes

Heated: Yes
Finished: Yes
Enclosed: Yes
Contiguous: Yes
Permitted: Yes
Wet space: No
Addition: No
Conversion: No

26 Floor 4 - Hall



Dimensions: 13'0" x 14'4"
Area: 168 sq. ft
Counted as living area: Yes

Heated: Yes
Finished: Yes
Enclosed: Yes
Contiguous: Yes
Permitted: Yes
Wet space: No
Addition: No
Conversion: No

1141 Sheridan Road, Wilmette, Cook County, Illinois, United States, 60091

27 Floor 4 - Bath



Dimensions: 4'9" x 3'7"
Area: 17 sq. ft
Counted as living area: Yes

Heated: Yes
Finished: Yes
Enclosed: Yes
Contiguous: Yes
Permitted: Yes
Wet space: Yes
Addition: No
Conversion: No

28 Floor 4 - W.I.C.



Dimensions: 9'5" x 4'4"
Area: 41 sq. ft
Counted as living area: Yes

Heated: Yes
Finished: Yes
Enclosed: Yes
Contiguous: Yes
Permitted: Yes
Wet space: No
Addition: No
Conversion: No

29 Floor 4 - Balcony



Dimensions: 7'6" x 10'9"
Area: 81 sq. ft
Counted as living area: No

Heated: No
Finished: No
Enclosed: No
Contiguous: Yes
Permitted: Yes
Wet space: No
Addition: No
Conversion: No

1141 Sheridan Road, Wilmette, Cook County, Illinois, United States, 60091

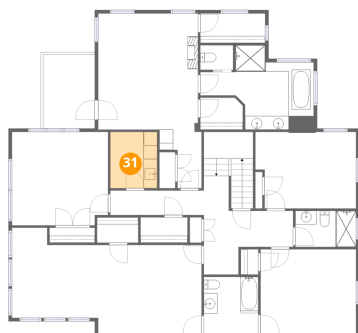
30 Floor 4 - Bedroom



Dimensions: 13'11" x 12'6"
Area: 174 sq. ft
Counted as living area: Yes

Heated: Yes
Finished: Yes
Enclosed: Yes
Contiguous: Yes
Permitted: Yes
Wet space: No
Addition: No
Conversion: No

31 Floor 4 - Laundry



Dimensions: 6'10" x 8'2"
Area: 56 sq. ft
Counted as living area: Yes

Heated: Yes
Finished: Yes
Enclosed: Yes
Contiguous: Yes
Permitted: Yes
Wet space: No
Addition: No
Conversion: No

32 Floor 4 - Bedroom



Dimensions: 14'0" x 13'7"
Area: 187 sq. ft
Counted as living area: Yes

Heated: Yes
Finished: Yes
Enclosed: Yes
Contiguous: Yes
Permitted: Yes
Wet space: No
Addition: No
Conversion: No

33 Floor 4 - Primary Bath



Dimensions: 16'6" x 12'3"
Area: 134 sq. ft
Counted as living area: Yes

Heated: Yes
Finished: Yes
Enclosed: Yes
Contiguous: Yes
Permitted: Yes
Wet space: Yes
Addition: No
Conversion: No

34 Floor 4 - Bath



Dimensions: 8'10" x 5'3"
Area: 46 sq. ft
Counted as living area: Yes

Heated: Yes
Finished: Yes
Enclosed: Yes
Contiguous: Yes
Permitted: Yes
Wet space: Yes
Addition: No
Conversion: No

35 Floor 4 - W.I.C.



Dimensions: 6'0" x 3'8"
Area: 22 sq. ft
Counted as living area: Yes

Heated: Yes
Finished: Yes
Enclosed: Yes
Contiguous: Yes
Permitted: Yes
Wet space: No
Addition: No
Conversion: No

1141 Sheridan Road, Wilmette, Cook County, Illinois, United States, 60091

36 Floor 4 - Bedroom



Dimensions: 27'9" x 13'2"
Area: 344 sq. ft
Counted as living area: Yes

Heated: Yes
Finished: Yes
Enclosed: Yes
Contiguous: Yes
Permitted: Yes
Wet space: No
Addition: No
Conversion: No

37 Floor 4 - Bath



Dimensions: 7'11" x 8'6"
Area: 67 sq. ft
Counted as living area: Yes

Heated: Yes
Finished: Yes
Enclosed: Yes
Contiguous: Yes
Permitted: Yes
Wet space: Yes
Addition: No
Conversion: No

38 Floor 4 - W.I.C.



Dimensions: 6'2" x 4'8"
Area: 28 sq. ft
Counted as living area: Yes

Heated: Yes
Finished: Yes
Enclosed: Yes
Contiguous: Yes
Permitted: Yes
Wet space: No
Addition: No
Conversion: No

1141 Sheridan Road, Wilmette, Cook County, Illinois, United States, 60091

39 Floor 4 - Hall



Dimensions: 13'7" x 3'7"
Area: 49 sq. ft
Counted as living area: Yes

Heated: Yes
Finished: Yes
Enclosed: Yes
Contiguous: Yes
Permitted: Yes
Wet space: No
Addition: No
Conversion: No

40 Floor 4 - Primary Bedroom



Dimensions: 14'6" x 25'5"
Area: 283 sq. ft
Counted as living area: Yes

Heated: Yes
Finished: Yes
Enclosed: Yes
Contiguous: Yes
Permitted: Yes
Wet space: No
Addition: No
Conversion: No

41 Floor 4 - Bedroom

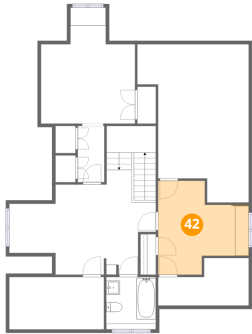


Dimensions: 14'8" x 11'2"
Area: 156 sq. ft
Counted as living area: Yes

Heated: Yes
Finished: Yes
Enclosed: Yes
Contiguous: Yes
Permitted: Yes
Wet space: No
Addition: No
Conversion: No

1141 Sheridan Road, Wilmette, Cook County, Illinois, United States, 60091

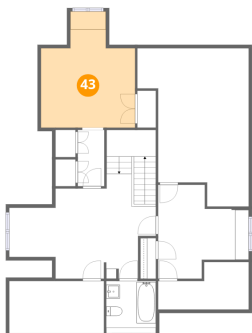
42 Floor 5 - Bedroom



Dimensions: 13'2" x 13'8"
Area: 139 sq. ft
Counted as living area: Yes

Heated: Yes
Finished: Yes
Enclosed: Yes
Contiguous: Yes
Permitted: Yes
Wet space: No
Addition: No
Conversion: No

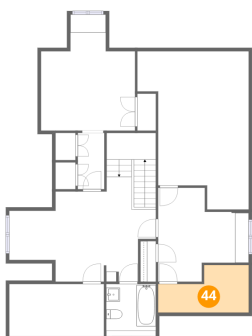
43 Floor 5 - Bedroom



Dimensions: 13'8" x 16'11"
Area: 186 sq. ft
Counted as living area: Yes

Heated: Yes
Finished: Yes
Enclosed: Yes
Contiguous: Yes
Permitted: Yes
Wet space: No
Addition: No
Conversion: No

44 Floor 5 - Attic

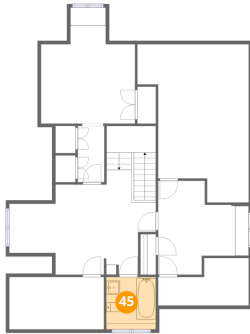


Dimensions: 13'2" x 6'11"
Area: 73 sq. ft
Counted as living area: No

Heated: No
Finished: No
Enclosed: Yes
Contiguous: Yes
Permitted: Yes
Wet space: No
Addition: No
Conversion: No

1141 Sheridan Road, Wilmette, Cook County, Illinois, United States, 60091

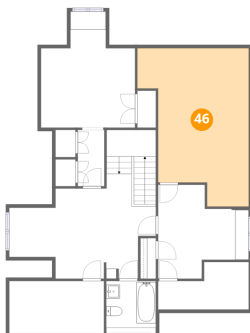
45 Floor 5 - Bath



Dimensions: 7'3" x 6'10"
Area: 55 sq. ft
Counted as living area: Yes

Heated: Yes
Finished: Yes
Enclosed: Yes
Contiguous: Yes
Permitted: Yes
Wet space: Yes
Addition: No
Conversion: No

46 Floor 5 - Attic



Dimensions: 16'3" x 23'0"
Area: 296 sq. ft
Counted as living area: No

Heated: No
Finished: No
Enclosed: Yes
Contiguous: Yes
Permitted: Yes
Wet space: No
Addition: No
Conversion: No

47 Floor 5 - Attic

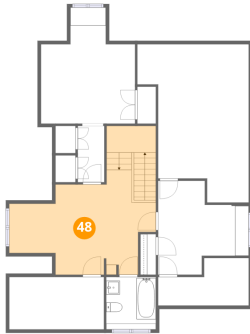


Dimensions: 13'9" x 7'7"
Area: 105 sq. ft
Counted as living area: No

Heated: No
Finished: No
Enclosed: Yes
Contiguous: Yes
Permitted: Yes
Wet space: No
Addition: No
Conversion: No

1141 Sheridan Road, Wilmette, Cook County, Illinois, United States, 60091

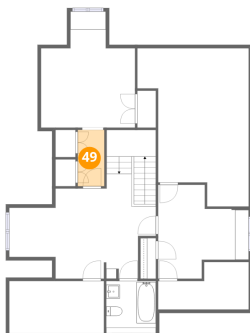
48 Floor 5 - Hall



Dimensions: 21'4" x 15'4"
Area: 284 sq. ft
Counted as living area: Yes

Heated: Yes
Finished: Yes
Enclosed: Yes
Contiguous: Yes
Permitted: Yes
Wet space: No
Addition: No
Conversion: No

49 Floor 5 - Hall



Dimensions: 3'10" x 8'2"
Area: 32 sq. ft
Counted as living area: Yes

Heated: Yes
Finished: Yes
Enclosed: Yes
Contiguous: Yes
Permitted: Yes
Wet space: No
Addition: No
Conversion: No