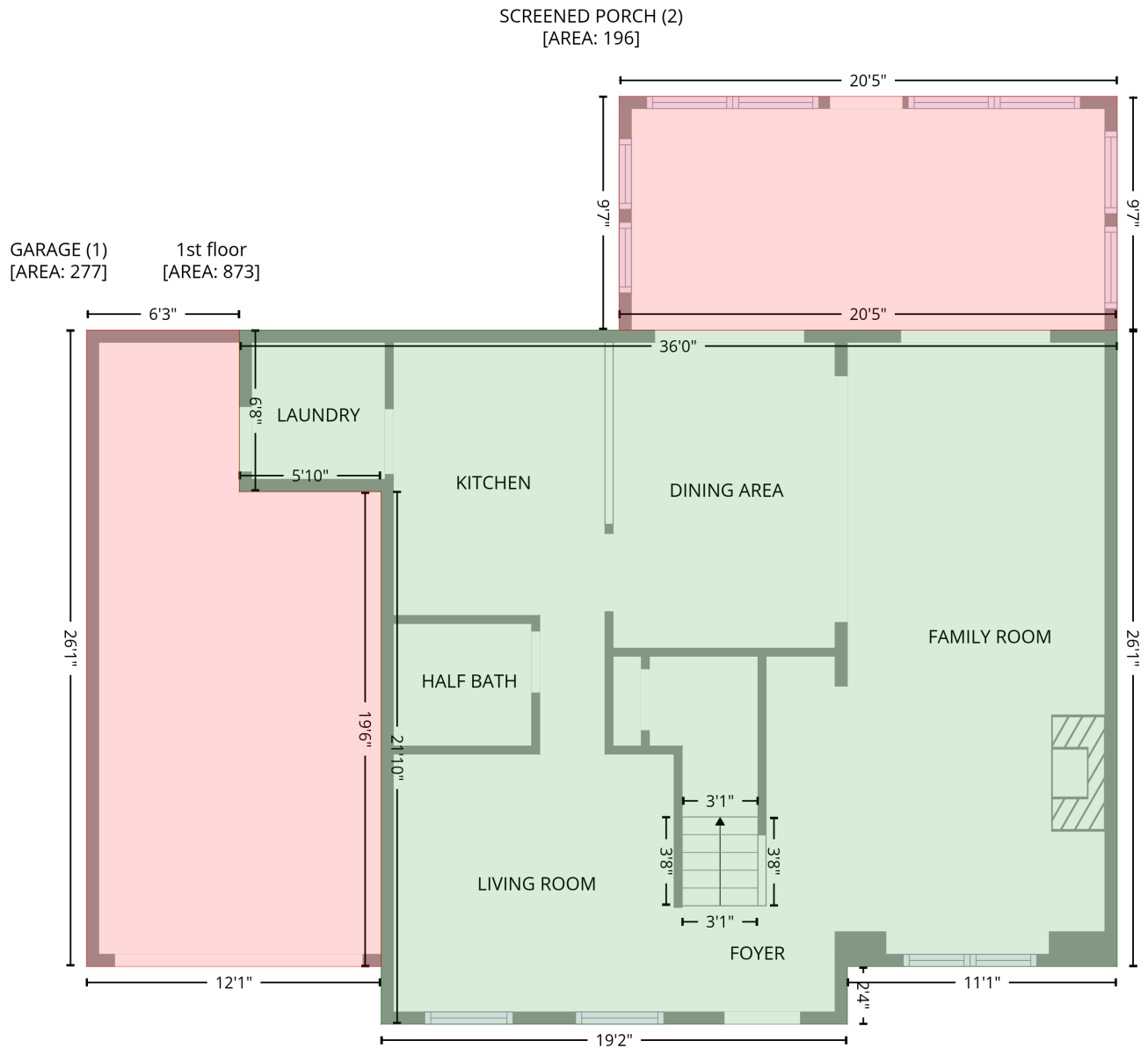


# 15 North Indian Creek Place, Marbry Landing, Durham, Durham County, North Carolina, United States, 27703

Gross Living Area: 2023 sq. ft

## Level 1



Space	Area (sq. ft)	Calculation <small>Coordinate Polygon Area Algorithm using inches</small>
1st floor (Living area)	873	$-\left((491.5 + 491.5) * (142.2 - 455.7) + (491.5 + 358.7) * (455.7 - 455.7) + (358.7 + 358.7) * (455.7 - 484.1) + (358.7 + 129.1) * (484.1 - 484.1) + (129.1 + 129.1) * (484.1 - 221.7) + (129.1 + 59.2) * (221.7 - 221.7) + (59.2 + 59.2) * (221.7 - 142.2) + (59.2 + 491.5) * (142.2 - 142.2)\right) * 0.5 * 0.00694$
GARAGE (Non-living area)	277	$-\left((59.2 + 59.2) * (142.2 - 221.7) + (59.2 + 129.1) * (221.7 - 221.7) + (129.1 + 129.1) * (221.7 - 455.7) + (129.1 + -16) * (455.7 - 455.7) + (-16 + -16) * (455.7 - 142.2) + (-16 + 59.2) * (142.2 - 142.2)\right) * 0.5 * 0.00694$

# 15 North Indian Creek Place, Marbry Landing, Durham, Durham County, North Carolina, United States, 27703

Gross Living Area: 2023 sq. ft

## Level 1

Space	Area (sq. ft)	Calculation <small>Coordinate Polygon Area Algorithm using inches</small>
SCREENED PORCH (Non-living area)	196	$-\left((491.5 + 491.5) * (27.1 - 142.2) + (491.5 + 246.3) * (142.2 - 142.2) + (246.3 + 246.3) * (142.2 - 27.1) + (246.3 + 491.5) * (27.1 - 27.1)\right) * 0.5 * 0.00694$

