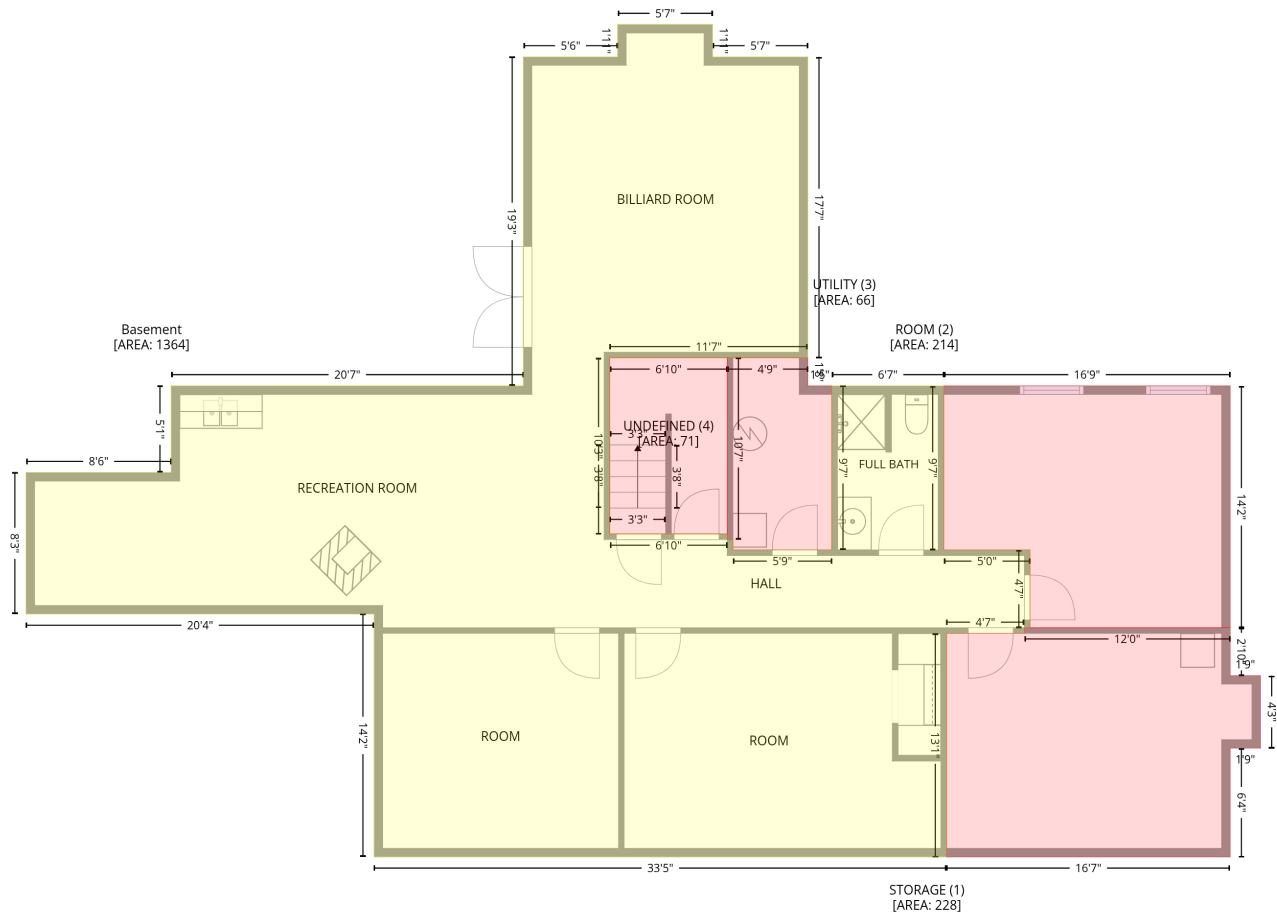


2705 NC-211, Eagle Springs, NC, US

Gross Living Area: 2972 sq. ft

Level 1 - Below Grade



Space	Area (sq. ft)	Calculation
Basement (Living area)	1364	Coordinate Polygon Area Algorithm using inches $-((628.3 + 628.3) * (6.7 - 29.4) + (628.3 + 695.1) * (29.4 - 29.4) + (695.1 + 695.1) * (29.4 - 240.5) + (695.1 + 556.2) * (240.5 - 240.5) + (556.2 + 556.2) * (240.5 - 364) + (556.2 + 638.5) * (364 - 364) + (638.5 + 638.5) * (364 - 368) + (638.5 + 642.5) * (368 - 368) + (642.5 + 642.5) * (368 - 375.1) + (642.5 + 711.9) * (375.1 - 375.1) + (711.9 + 711.9) * (375.1 - 260.1) + (711.9 + 790.5) * (260.1 - 260.1) + (790.5 + 790.5) * (260.1 - 375.1) + (790.5 + 851) * (375.1 - 375.1) + (851 + 851) * (375.1 - 429.7) + (851 + 847) * (429.7 - 429.7) + (847 + 847) * (429.7 - 433.7) + (847 + 792.4) * (433.7 - 433.7) + (792.4 + 792.4) * (433.7 - 590.4) + (792.4 + 390.9) * (590.4 - 590.4) + (390.9 + 390.9) * (590.4 - 420.1) + (390.9 + 146.8) * (420.1 - 420.1) + (146.8 + 146.8) * (420.1 - 320.9) + (146.8 + 248.5) * (320.9 - 320.9) + (248.5 + 248.5) * (320.9 - 260.1) + (248.5 + 495.6) * (260.1 - 260.1) + (495.6 + 495.6) * (260.1 - 29.4) + (495.6 + 561.7) * (29.4 - 29.4) + (561.7 + 561.7) * (29.4 - 6.7) + (561.7 + 628.3) * (6.7 - 6.7)) * 0.5 * 0.00694$
STORAGE (Non-living area)	228	$-((991.3 + 991.3) * (429.7 - 463.3) + (991.3 + 1012.6) * (463.3 - 463.3) + (1012.6 + 1012.6) * (463.3 - 514.2) + (1012.6 + 991.3) * (514.2 - 514.2) + (991.3 + 991.3) * (514.2 - 590.4) + (991.3 + 792.4) * (590.4 - 590.4) + (792.4 + 792.4) * (590.4 - 433.7) + (792.4 + 847) * (433.7 - 433.7) + (847 + 847) * (433.7 - 429.7) + (847 + 991.3) * (429.7 - 429.7)) * 0.5 * 0.00694$
ROOM (Non-living area)	214	$-((991.3 + 991.3) * (260.1 - 429.7) + (991.3 + 851) * (429.7 - 429.7) + (851 + 851) * (429.7 - 375.1) + (851 + 790.5) * (375.1 - 375.1) + (790.5 + 790.5) * (375.1 - 260.1) + (790.5 + 991.3) * (260.1 - 260.1)) * 0.5 * 0.00694$

2705 NC-211, Eagle Springs, NC, US

Gross Living Area: 2972 sq. ft

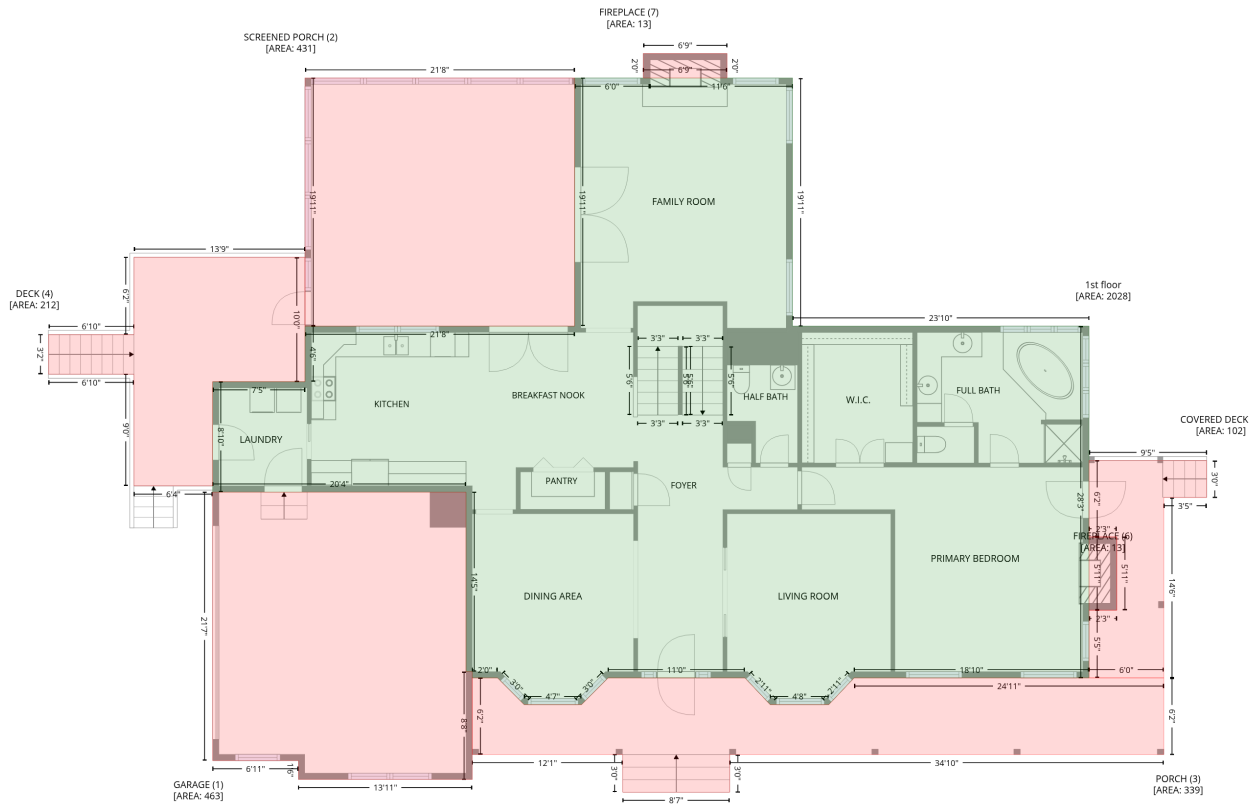
Level 1 - Below Grade

Space	Area (sq. ft)	Calculation <small>Coordinate Polygon Area Algorithm using inches</small>
UTILITY (Non-living area)	66	$-((695.1 + 695.1) * (240.5 - 260.1) + (695.1 + 711.9) * (260.1 - 260.1) + (711.9 + 711.9) * (260.1 - 375.1) + (711.9 + 642.5) * (375.1 - 375.1) + (642.5 + 642.5) * (375.1 - 368) + (642.5 + 638.5) * (368 - 368) + (638.5 + 638.5) * (368 - 240.5) + (638.5 + 695.1) * (240.5 - 240.5)) * 0.5 * 0.00694$
UNDEFINED (Non-living area)	71	$-((638.5 + 638.5) * (240.5 - 364) + (638.5 + 556.2) * (364 - 364) + (556.2 + 556.2) * (364 - 240.5) + (556.2 + 638.5) * (240.5 - 240.5)) * 0.5 * 0.00694$

2705 NC-211, Eagle Springs, NC, US

Gross Living Area: 2972 sq. ft

Level 2



Space	Area (sq. ft)	Calculation
1st floor (Living area)	2028	Coordinate Polygon Area Algorithm using inches $-((567.7 + 567.9) * (21.2 - 21.2) + (567.9 + 705.6) * (21.2 - 21.2) + (705.6 + 705.6) * (21.2 - 260.1) + (705.6 + 991.3) * (260.1 - 260.1) + (991.3 + 991.3) * (260.1 - 599) + (991.3 + 764.9) * (599 - 599) + (764.9 + 740.6) * (599 - 624.8) + (740.6 + 684.1) * (624.8 - 624.8) + (684.1 + 659.7) * (624.8 - 599) + (659.7 + 527.8) * (599 - 599) + (527.8 + 502.2) * (599 - 624.8) + (502.2 + 446.9) * (624.8 - 624.8) + (446.9 + 421.3) * (624.8 - 599) + (421.3 + 396.9) * (599 - 599) + (396.9 + 396.9) * (599 - 593) + (396.9 + 390.9) * (593 - 593) + (390.9 + 390.9) * (593 - 420.1) + (390.9 + 146.8) * (420.1 - 420.1) + (146.8 + 146.8) * (420.1 - 313.7) + (146.8 + 235.7) * (313.7 - 313.7) + (235.7 + 235.7) * (313.7 - 260.1) + (235.7 + 495.6) * (260.1 - 260.1) + (495.6 + 495.6) * (260.1 - 21.2) + (495.6 + 567.7) * (21.2 - 21.2)) * 0.5 * 0.00694$
GARAGE (Non-living area)	463	$-((390.9 + 390.9) * (420.1 - 593) + (390.9 + 396.9) * (593 - 593) + (396.9 + 396.9) * (593 - 696.9) + (396.9 + 229.4) * (696.9 - 696.9) + (229.4 + 229.4) * (696.9 - 678.7) + (229.4 + 146.8) * (678.7 - 678.7) + (146.8 + 146.8) * (678.7 - 420.1) + (146.8 + 390.9) * (420.1 - 420.1)) * 0.5 * 0.00694$
SCREENED PORCH (Non-living area)	431	$-((495.6 + 495.6) * (21.2 - 260.1) + (495.6 + 235.7) * (260.1 - 260.1) + (235.7 + 235.7) * (260.1 - 21.2) + (235.7 + 495.6) * (21.2 - 21.2)) * 0.5 * 0.00694$
PORCH (Non-living area)	339	$-((421.3 + 446.9) * (599 - 624.8) + (446.9 + 502.2) * (624.8 - 624.8) + (502.2 + 527.8) * (624.8 - 599) + (527.8 + 659.7) * (599 - 599) + (659.7 + 684.1) * (599 - 624.8) + (684.1 + 740.6) * (624.8 - 624.8) + (740.6 + 764.9) * (624.8 - 599) + (764.9 + 1063.5) * (599 - 599) + (1063.5 + 1063.5) * (599 - 672.9) + (1063.5 + 645) * (672.9 - 672.9) + (645 + 645) * (672.9 - 709.2) + (645 + 542) * (709.2 - 709.2) + (542 + 542) * (709.2 - 672.9) + (542 + 396.9) * (672.9 - 672.9) + (396.9 + 396.9) * (672.9 - 599) + (396.9 + 421.3) * (599 - 599)) * 0.5 * 0.00694$

2705 NC-211,Eagle Springs,NC,US

Gross Living Area: 2972 sq. ft

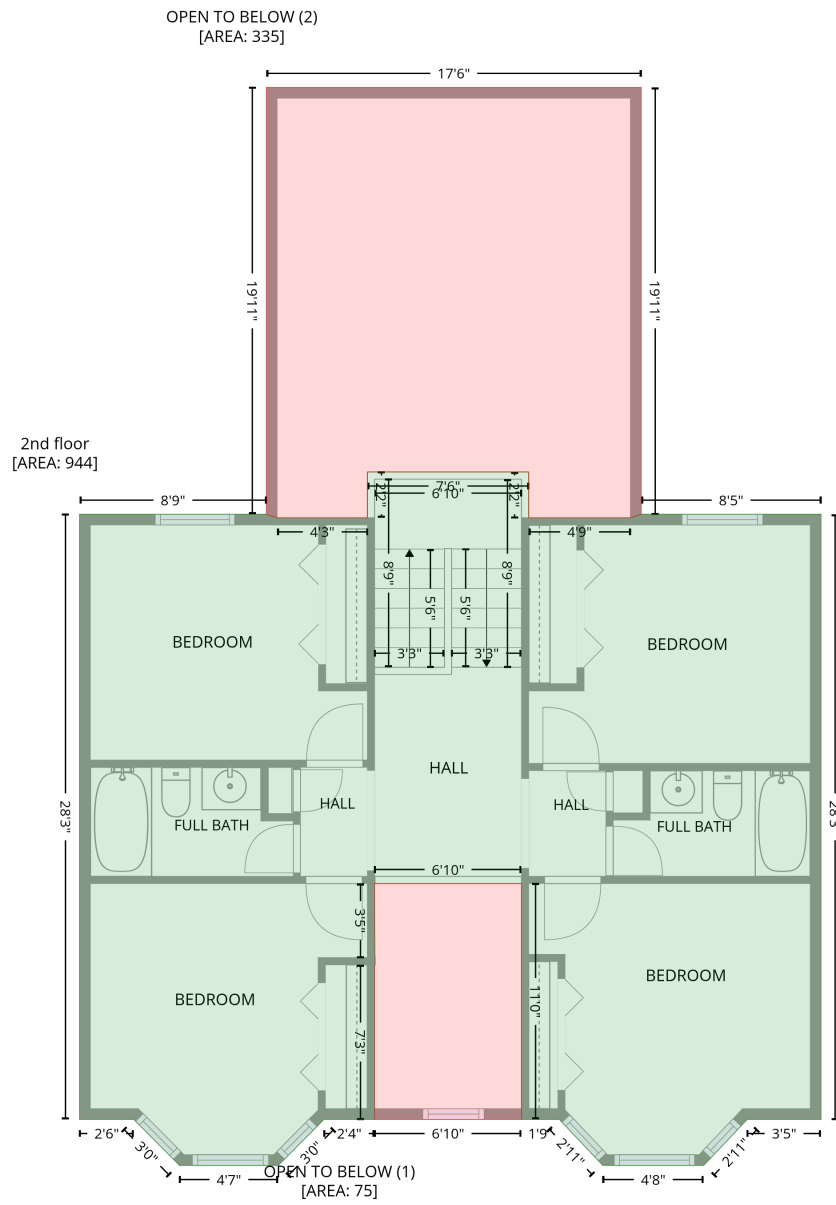
Level 2

Space	Area (sq. ft)	Calculation <small>Coordinate Polygon Area Algorithm using inches</small>
DECK (Non-living area)	212	$-\left((235.7 + 235.7) * (193.8 - 313.7) + (235.7 + 146.8) * (313.7 - 313.7) + (146.8 + 146.8) * (313.7 - 414.1) + (146.8 + 70.9) * (414.1 - 414.1) + (70.9 + 70.9) * (414.1 - 306.5) + (70.9 + -11.4) * (306.5 - 306.5) + (-11.4 + -11.4) * (306.5 - 268.3) + (-11.4 + 70.9) * (268.3 - 268.3) + (70.9 + 70.9) * (268.3 - 193.8) + (70.9 + 235.7) * (193.8 - 193.8)\right) * 0.5 * 0.00694$
COVERED DECK (Non-living area)	102	$-\left((1104.8 + 1104.8) * (389.7 - 425.3) + (1104.8 + 1063.5) * (425.3 - 425.3) + (1063.5 + 1063.5) * (425.3 - 599) + (1063.5 + 991.3) * (599 - 599) + (991.3 + 991.3) * (599 - 533.9) + (991.3 + 1018.1) * (533.9 - 533.9) + (1018.1 + 1018.1) * (533.9 - 463.3) + (1018.1 + 991.3) * (463.3 - 463.3) + (991.3 + 991.3) * (463.3 - 389.7) + (991.3 + 1104.8) * (389.7 - 389.7)\right) * 0.5 * 0.00694$
FIREPLACE (Non-living area)	13	$-\left((1018.1 + 1018.1) * (463.3 - 533.9) + (1018.1 + 991.3) * (533.9 - 533.9) + (991.3 + 991.3) * (533.9 - 463.3) + (991.3 + 1018.1) * (463.3 - 463.3)\right) * 0.5 * 0.00694$
FIREPLACE (Non-living area)	13	$-\left((642.5 + 642.5) * (-2.5 - 21.2) + (642.5 + 561.7) * (21.2 - 21.2) + (561.7 + 561.7) * (21.2 - -2.5) + (561.7 + 642.5) * (-2.5 - -2.5)\right) * 0.5 * 0.00694$

2705 NC-211, Eagle Springs, NC, US

Gross Living Area: 2972 sq. ft

Level 3



2705 NC-211,Eagle Springs,NC,US

Gross Living Area: 2972 sq. ft

Level 3

Space	Area (sq. ft)	Calculation <small>Coordinate Polygon Area Algorithm using inches</small>
2nd floor (Living area)	944	$\begin{aligned} & -((642.5 + 642.5) * (236.5 - 262.1) + (642.5 + 699.6) * (262.1 - 262.1) + (699.6 + 705.6) * (262.1 - \\ & 260.1) + (705.6 + 806.3) * (260.1 - 260.1) + (806.3 + 806.3) * (260.1 - 599) + (806.3 + 764.9) * \\ & (599 - 599) + (764.9 + 740.6) * (599 - 624.8) + (740.6 + 684.1) * (624.8 - 624.8) + (684.1 + 659.7) \\ & * (624.8 - 599) + (659.7 + 638.5) * (599 - 599) + (638.5 + 638.5) * (599 - 466.9) + (638.5 + 556.2) \\ & * (466.9 - 466.9) + (556.2 + 556.2) * (466.9 - 508.4) + (556.2 + 556.5) * (508.4 - 508.4) + (556.5 + \\ & 556.5) * (508.4 - 512.4) + (556.5 + 556.2) * (512.4 - 512.4) + (556.2 + 556.2) * (512.4 - 599) + \\ & (556.2 + 527.8) * (599 - 599) + (527.8 + 502.2) * (599 - 624.8) + (502.2 + 446.9) * (624.8 - 624.8) \\ & + (446.9 + 421.3) * (624.8 - 599) + (421.3 + 390.9) * (599 - 599) + (390.9 + 390.9) * (599 - 260.1) \\ & + (390.9 + 495.6) * (260.1 - 260.1) + (495.6 + 501.6) * (260.1 - 262.1) + (501.6 + 552.2) * (262.1 - \\ & 262.1) + (552.2 + 552.2) * (262.1 - 236.5) + (552.2 + 642.5) * (236.5 - 236.5)) * 0.5 * 0.00694 \end{aligned}$
OPEN TO BELOW (Non-living area)	75	$\begin{aligned} & -((638.5 + 638.5) * (466.9 - 599) + (638.5 + 556.2) * (599 - 599) + (556.2 + 556.2) * (599 - 512.4) \\ & + (556.2 + 556.5) * (512.4 - 512.4) + (556.5 + 556.5) * (512.4 - 508.4) + (556.5 + 556.2) * (508.4 - \\ & 466.9) + (556.2 + 638.5) * (466.9 - 466.9)) * 0.5 * 0.00694 \end{aligned}$
OPEN TO BELOW (Non-living area)	335	$\begin{aligned} & -((705.6 + 705.6) * (21.2 - 260.1) + (705.6 + 699.6) * (260.1 - 262.1) + (699.6 + 642.5) * (262.1 - \\ & 262.1) + (642.5 + 642.5) * (262.1 - 236.5) + (642.5 + 552.2) * (236.5 - 236.5) + (552.2 + 552.2) * \\ & (236.5 - 262.1) + (552.2 + 501.6) * (262.1 - 262.1) + (501.6 + 495.6) * (262.1 - 260.1) + (495.6 + \\ & 495.6) * (260.1 - 21.2) + (495.6 + 705.6) * (21.2 - 21.2)) * 0.5 * 0.00694 \end{aligned}$