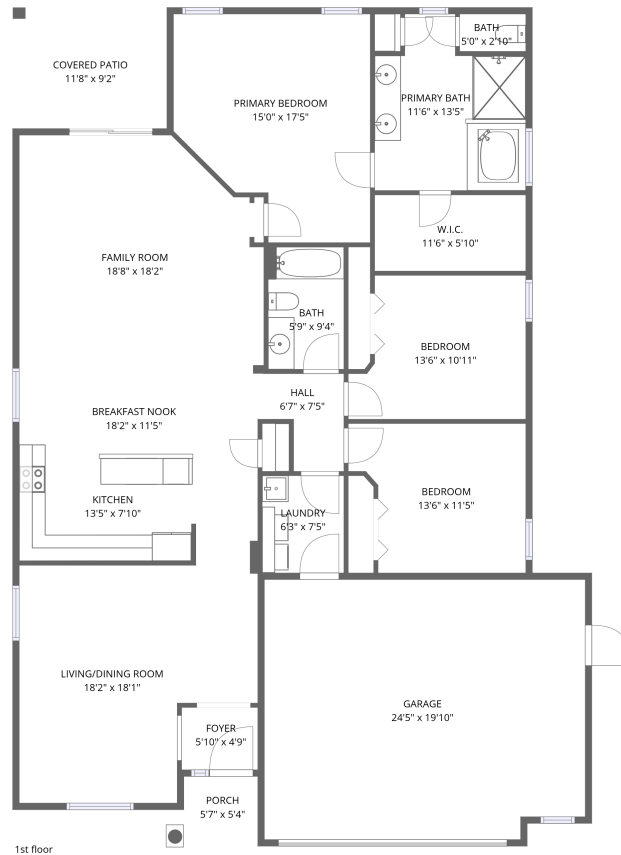


Home data report

11448 Merganser Way, Summertree, New Port Richey, Pasco County, Florida, United States, 34654



Total Area: 1837 sq. ft

1st Floor: 1837 sq. ft

Excluded: Garage 475 sq. ft, Covered patio 108 sq. ft, Porch 30 sq. ft, Walls: 127 sq. ft

Property summary



1 Floors



3 Bedrooms



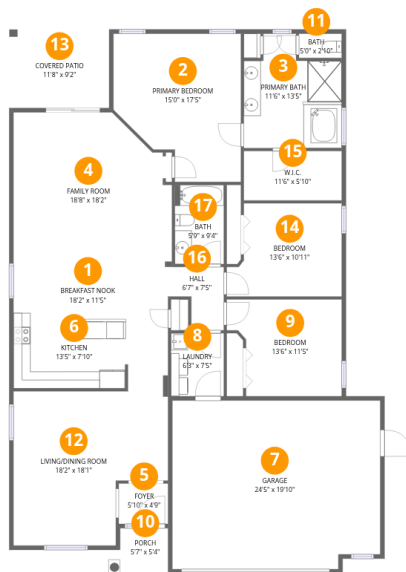
2 Bathrooms



1 Garages

Home data report

11448 Merganser Way, Summertree, New Port Richey, Pasco County, Florida, United States, 34654



Room dimensions

Floor 1

Total:1837sqft Excluded: 613sqft

#		Dimensions	sqft	Counted as living area
1	Breakfast Nook	18'2" x 11'5"	141 sq. ft	Yes
2	Primary Bedroom	15'0" x 17'5"	222 sq. ft	Yes
3	Primary Bath	11'6" x 13'5"	130 sq. ft	Yes
4	Family Room	18'8" x 18'2"	316 sq. ft	Yes
5	Foyer	5'10" x 4'9"	28 sq. ft	Yes
6	Kitchen	13'5" x 7'10"	104 sq. ft	Yes
7	Garage	24'5" x 19'10"	475 sq. ft	No
8	Laundry	6'3" x 7'5"	46 sq. ft	Yes
9	Bedroom	13'6" x 11'5"	137 sq. ft	Yes
10	Porch	5'7" x 5'4"	30 sq. ft	No
11	Bath	5'0" x 2'10"	14 sq. ft	Yes

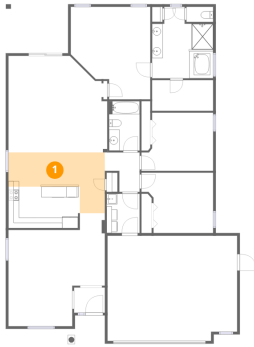
Home data report

11448 Merganser Way, Summertree, New Port Richey, Pasco County, Florida, United States, 34654

#		Dimensions	sqft	Counted as living area
12	LIVING/DINING Room	18'2" x 18'1"	298 sq. ft	Yes
13	Covered Patio	11'8" x 9'2"	108 sq. ft	No
14	Bedroom	13'6" x 10'11"	133 sq. ft	Yes
15	W.I.C.	11'6" x 5'10"	67 sq. ft	Yes
16	Hall	6'7" x 7'5"	38 sq. ft	Yes
17	Bath	5'9" x 9'4"	54 sq. ft	Yes

11448 Merganser Way, Summertree, New Port Richey, Pasco County, Florida, United States, 34654

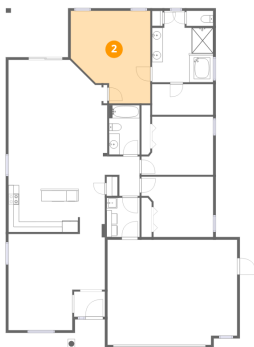
1 Floor 1 - Breakfast Nook



Dimensions: 18'2" x 11'5"
Area: 141 sq. ft
Counted as living area: Yes

Heated: Yes
Finished: Yes
Enclosed: Yes
Contiguous: Yes
Permitted: Yes
Wet space: No
Addition: No
Conversion: No

2 Floor 1 - Primary Bedroom

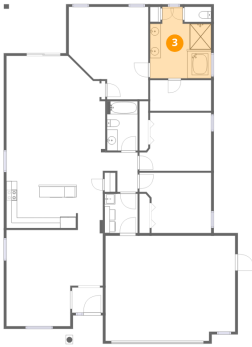


Dimensions: 15'0" x 17'5"
Area: 222 sq. ft
Counted as living area: Yes

Heated: Yes
Finished: Yes
Enclosed: Yes
Contiguous: Yes
Permitted: Yes
Wet space: No
Addition: No
Conversion: No

11448 Merganser Way, Summertree, New Port Richey, Pasco County, Florida, United States, 34654

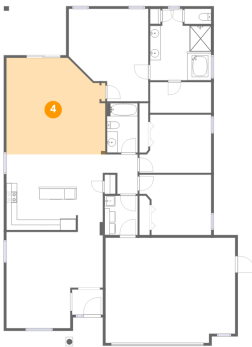
3 Floor 1 - Primary Bath



Dimensions: 11'6" x 13'5"
Area: 130 sq. ft
Counted as living area: Yes

Heated: Yes
Finished: Yes
Enclosed: Yes
Contiguous: Yes
Permitted: Yes
Wet space: Yes
Addition: No
Conversion: No

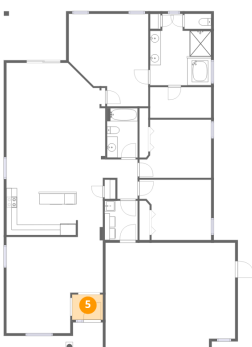
4 Floor 1 - Family Room



Dimensions: 18'8" x 18'2"
Area: 316 sq. ft
Counted as living area: Yes

Heated: Yes
Finished: Yes
Enclosed: Yes
Contiguous: Yes
Permitted: Yes
Wet space: No
Addition: No
Conversion: No

5 Floor 1 - Foyer

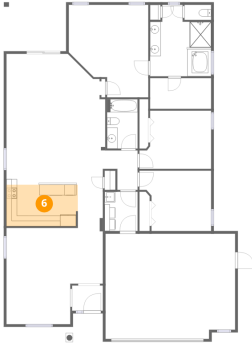


Dimensions: 5'10" x 4'9"
Area: 28 sq. ft
Counted as living area: Yes

Heated: Yes
Finished: Yes
Enclosed: Yes
Contiguous: Yes
Permitted: Yes
Wet space: No
Addition: No
Conversion: No

11448 Merganser Way, Summertree, New Port Richey, Pasco County, Florida, United States, 34654

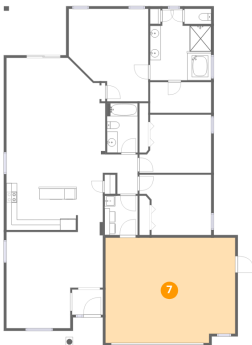
6 Floor 1 - Kitchen



Dimensions: 13'5" x 7'10"
Area: 104 sq. ft
Counted as living area: Yes

Heated: Yes
Finished: Yes
Enclosed: Yes
Contiguous: Yes
Permitted: Yes
Wet space: No
Addition: No
Conversion: No

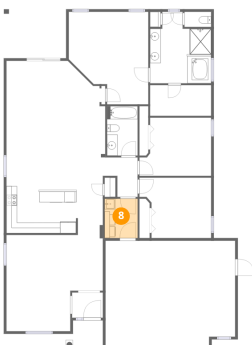
7 Floor 1 - Garage



Dimensions: 24'5" x 19'10"
Area: 475 sq. ft
Counted as living area: No

Heated: No
Finished: No
Enclosed: Yes
Contiguous: Yes
Permitted: Yes
Wet space: No
Addition: No
Conversion: No

8 Floor 1 - Laundry

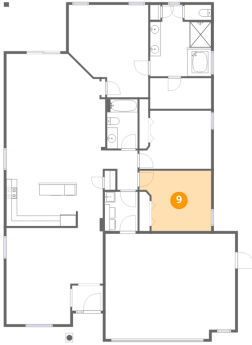


Dimensions: 6'3" x 7'5"
Area: 46 sq. ft
Counted as living area: Yes

Heated: Yes
Finished: Yes
Enclosed: Yes
Contiguous: Yes
Permitted: Yes
Wet space: No
Addition: No
Conversion: No

11448 Merganser Way, Summertree, New Port Richey, Pasco County, Florida, United States, 34654

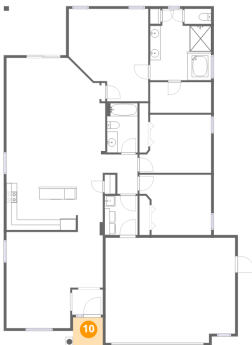
9 Floor 1 - Bedroom



Dimensions: 13'6" x 11'5"
Area: 137 sq. ft
Counted as living area: Yes

Heated: Yes
Finished: Yes
Enclosed: Yes
Contiguous: Yes
Permitted: Yes
Wet space: No
Addition: No
Conversion: No

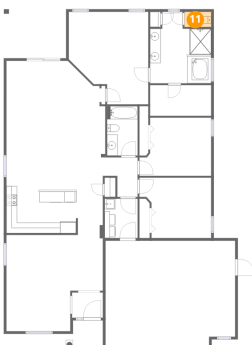
10 Floor 1 - Porch



Dimensions: 5'7" x 5'4"
Area: 30 sq. ft
Counted as living area: No

Heated: No
Finished: No
Enclosed: No
Contiguous: Yes
Permitted: Yes
Wet space: No
Addition: No
Conversion: No

11 Floor 1 - Bath

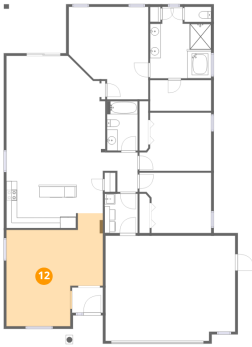


Dimensions: 5'0" x 2'10"
Area: 14 sq. ft
Counted as living area: Yes

Heated: Yes
Finished: Yes
Enclosed: Yes
Contiguous: Yes
Permitted: Yes
Wet space: Yes
Addition: No
Conversion: No

11448 Merganser Way, Summertree, New Port Richey, Pasco County, Florida, United States, 34654

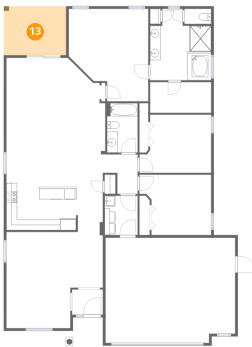
12 Floor 1 - LIVING/DINING Room



Dimensions: 18'2" x 18'1"
Area: 298 sq. ft
Counted as living area: Yes

Heated: Yes
Finished: Yes
Enclosed: Yes
Contiguous: Yes
Permitted: Yes
Wet space: No
Addition: No
Conversion: No

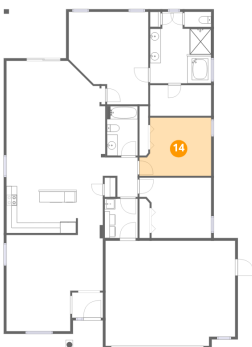
13 Floor 1 - Covered Patio



Dimensions: 11'8" x 9'2"
Area: 108 sq. ft
Counted as living area: No

Heated: No
Finished: No
Enclosed: No
Contiguous: Yes
Permitted: Yes
Wet space: No
Addition: No
Conversion: No

14 Floor 1 - Bedroom

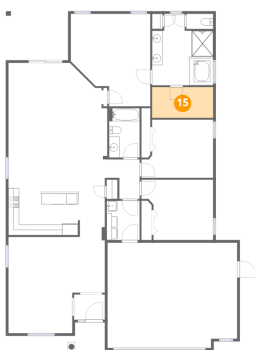


Dimensions: 13'6" x 10'11"
Area: 133 sq. ft
Counted as living area: Yes

Heated: Yes
Finished: Yes
Enclosed: Yes
Contiguous: Yes
Permitted: Yes
Wet space: No
Addition: No
Conversion: No

11448 Merganser Way, Summertree, New Port Richey, Pasco County, Florida, United States, 34654

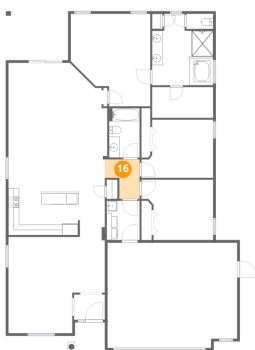
15 Floor 1 - W.I.C.



Dimensions: 11'6" x 5'10"
Area: 67 sq. ft
Counted as living area: Yes

Heated: Yes
Finished: Yes
Enclosed: Yes
Contiguous: Yes
Permitted: Yes
Wet space: No
Addition: No
Conversion: No

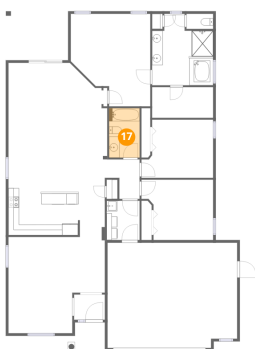
16 Floor 1 - Hall



Dimensions: 6'7" x 7'5"
Area: 38 sq. ft
Counted as living area: Yes

Heated: Yes
Finished: Yes
Enclosed: Yes
Contiguous: Yes
Permitted: Yes
Wet space: No
Addition: No
Conversion: No

17 Floor 1 - Bath



Dimensions: 5'9" x 9'4"
Area: 54 sq. ft
Counted as living area: Yes

Heated: Yes
Finished: Yes
Enclosed: Yes
Contiguous: Yes
Permitted: Yes
Wet space: Yes
Addition: No
Conversion: No