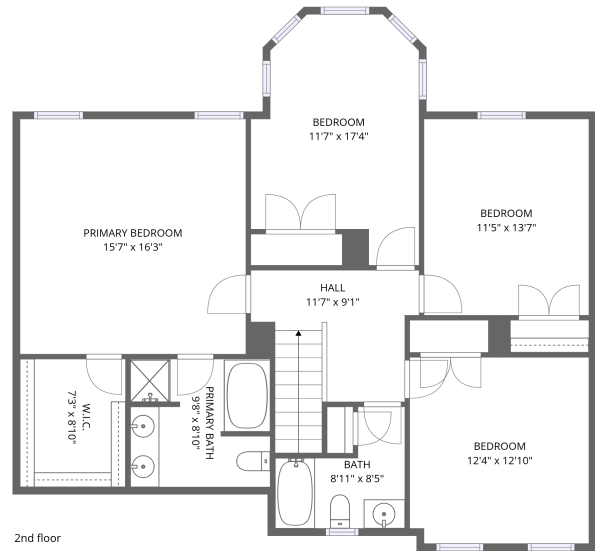
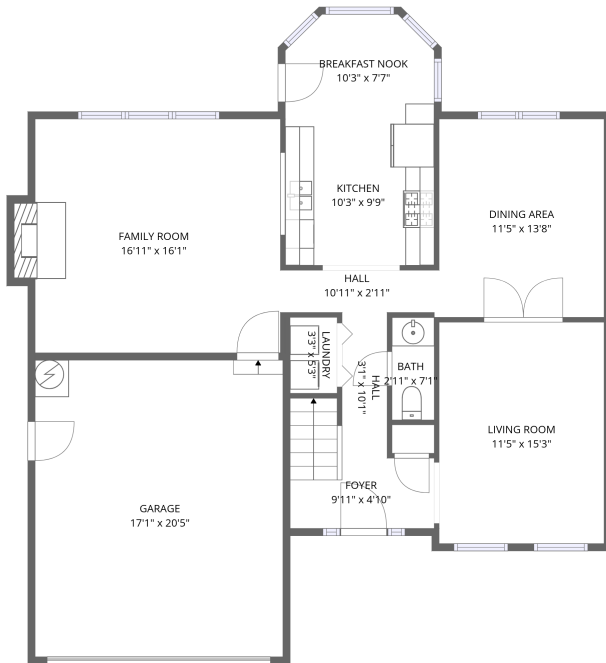


# Home data report

## 3828 Donnington Dr, Virginia Beach, VA, US



**Total Area: 2116 sq. ft**

1st Floor: 978 sq. ft, 2nd Floor: 1138 sq. ft

Excluded: Garage 350 sq. ft, Fireplace 9 sq. ft, Walls: 170 sq. ft

### Property summary

 **2** Floors

 **4** Bedrooms

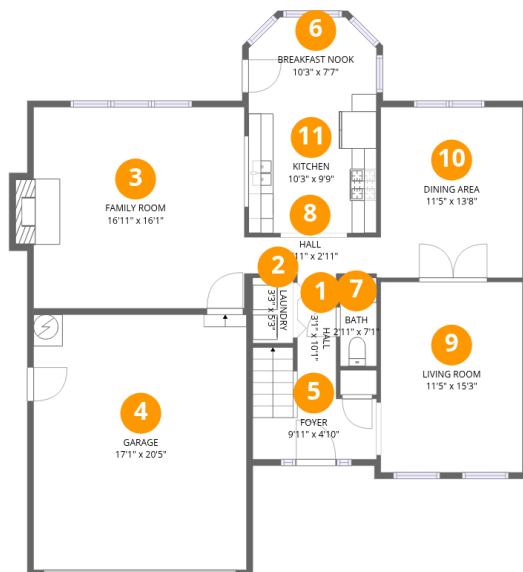
 **2** Bathrooms

Home data report

# 3828 Donnington Dr, Virginia Beach, VA, US

 **1**  
Half baths

 **1**  
Garages



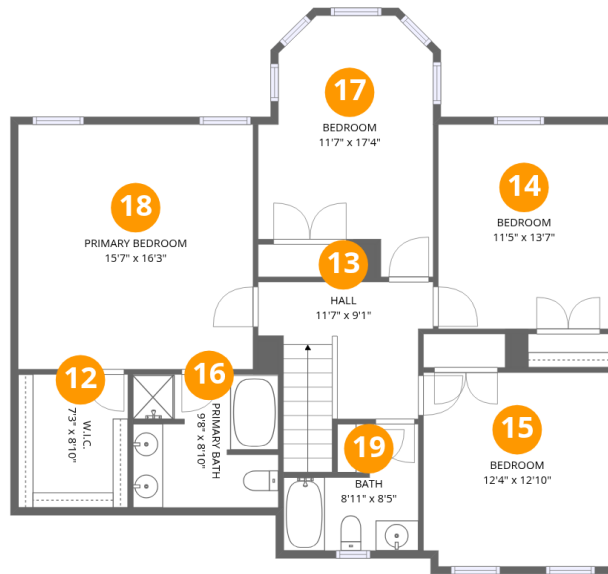
## Room dimensions

Floor 1

Total:978sqft

Excluded: 359sqft

#		Dimensions	sqft	Counted as living area
1	Hall	3'1" x 10'1"	31 sq. ft	Yes
2	Laundry	3'3" x 5'3"	18 sq. ft	Yes
3	Family Room	16'11" x 16'1"	281 sq. ft	Yes
4	Garage	17'1" x 20'5"	350 sq. ft	No
5	Foyer	9'11" x 4'10"	62 sq. ft	Yes
6	Breakfast Nook	10'3" x 7'7"	72 sq. ft	Yes
7	Bath	2'11" x 7'1"	21 sq. ft	Yes
8	Hall	10'11" x 2'11"	32 sq. ft	Yes
9	Living Room	11'5" x 15'3"	174 sq. ft	Yes
10	Dining Area	11'5" x 13'8"	156 sq. ft	Yes
11	Kitchen	10'3" x 9'9"	102 sq. ft	Yes



## Room dimensions

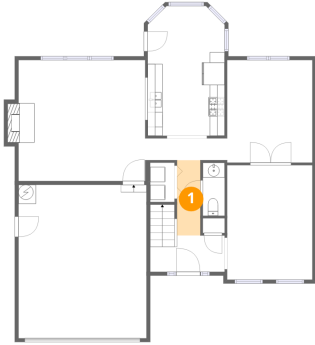
Floor 2

Total: 1138 sqft

Excluded: 0 sqft

#		Dimensions	sqft	Counted as living area
12	W.I.C.	7'3" x 8'10"	64 sq. ft	Yes
13	Hall	11'7" x 9'1"	102 sq. ft	Yes
14	Bedroom	11'5" x 13'7"	154 sq. ft	Yes
15	Bedroom	12'4" x 12'10"	158 sq. ft	Yes
16	Primary Bath	9'8" x 8'10"	83 sq. ft	Yes
17	Bedroom	11'7" x 17'4"	165 sq. ft	Yes
18	Primary Bedroom	15'7" x 16'3"	253 sq. ft	Yes
19	Bath	8'11" x 8'5"	55 sq. ft	Yes

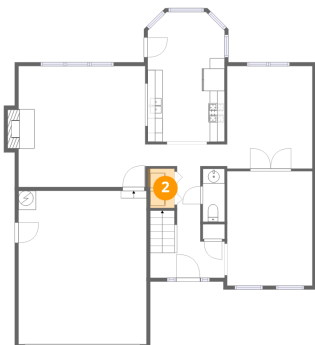
## 1 Floor 1 - Hall



Dimensions: 3'1" x 10'1"  
Area: 31 sq. ft  
Counted as living area: Yes

Heated: Yes  
Finished: Yes  
Enclosed: Yes  
Contiguous: Yes  
Permitted: Yes  
Wet space: No  
Addition: No  
Conversion: No

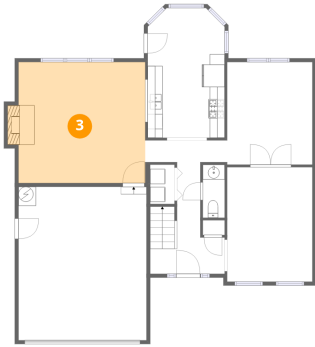
## 2 Floor 1 - Laundry



Dimensions: 3'3" x 5'3"  
Area: 18 sq. ft  
Counted as living area: Yes

Heated: Yes  
Finished: Yes  
Enclosed: Yes  
Contiguous: Yes  
Permitted: Yes  
Wet space: No  
Addition: No  
Conversion: No

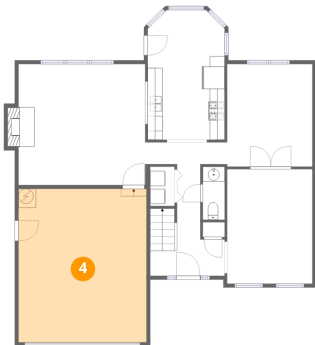
### 3 Floor 1 - Family Room



Dimensions: 16'11" x 16'1"  
Area: 281 sq. ft  
Counted as living area: Yes

Heated: Yes  
Finished: Yes  
Enclosed: Yes  
Contiguous: Yes  
Permitted: Yes  
Wet space: No  
Addition: No  
Conversion: No

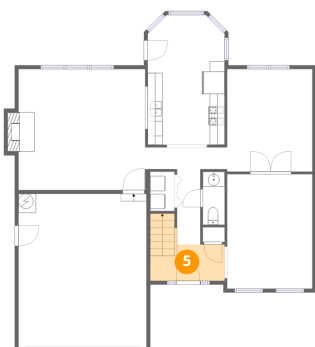
### 4 Floor 1 - Garage



Dimensions: 17'1" x 20'5"  
Area: 350 sq. ft  
Counted as living area: No

Heated: No  
Finished: No  
Enclosed: Yes  
Contiguous: Yes  
Permitted: Yes  
Wet space: No  
Addition: No  
Conversion: No

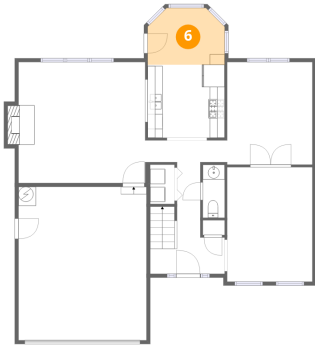
### 5 Floor 1 - Foyer



Dimensions: 9'11" x 4'10"  
Area: 62 sq. ft  
Counted as living area: Yes

Heated: Yes  
Finished: Yes  
Enclosed: Yes  
Contiguous: Yes  
Permitted: Yes  
Wet space: No  
Addition: No  
Conversion: No

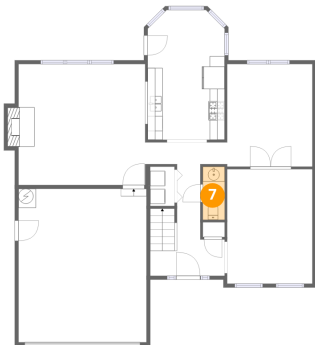
### 6 Floor 1 - Breakfast Nook



Dimensions: 10'3" x 7'7"  
Area: 72 sq. ft  
Counted as living area: Yes

Heated: Yes  
Finished: Yes  
Enclosed: Yes  
Contiguous: Yes  
Permitted: Yes  
Wet space: No  
Addition: No  
Conversion: No

### 7 Floor 1 - Bath



Dimensions: 2'11" x 7'1"  
Area: 21 sq. ft  
Counted as living area: Yes

Heated: Yes  
Finished: Yes  
Enclosed: Yes  
Contiguous: Yes  
Permitted: Yes  
Wet space: Yes  
Addition: No  
Conversion: No

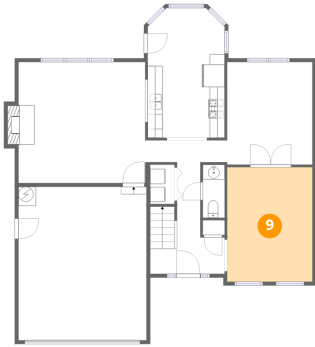
### 8 Floor 1 - Hall



Dimensions: 10'11" x 2'11"  
Area: 32 sq. ft  
Counted as living area: Yes

Heated: Yes  
Finished: Yes  
Enclosed: Yes  
Contiguous: Yes  
Permitted: Yes  
Wet space: No  
Addition: No  
Conversion: No

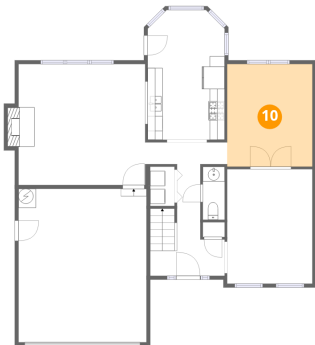
### 9 Floor 1 - Living Room



Dimensions: 11'5" x 15'3"  
Area: 174 sq. ft  
Counted as living area: Yes

Heated: Yes  
Finished: Yes  
Enclosed: Yes  
Contiguous: Yes  
Permitted: Yes  
Wet space: No  
Addition: No  
Conversion: No

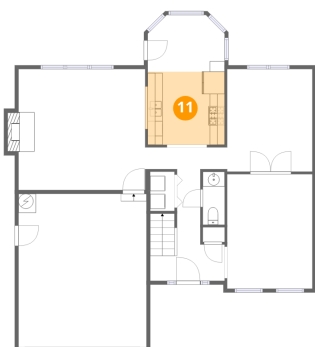
### 10 Floor 1 - Dining Area



Dimensions: 11'5" x 13'8"  
Area: 156 sq. ft  
Counted as living area: Yes

Heated: Yes  
Finished: Yes  
Enclosed: Yes  
Contiguous: Yes  
Permitted: Yes  
Wet space: No  
Addition: No  
Conversion: No

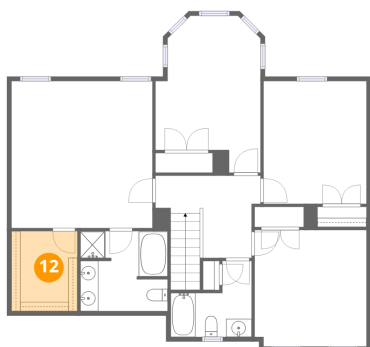
### 11 Floor 1 - Kitchen



Dimensions: 10'3" x 9'9"  
Area: 102 sq. ft  
Counted as living area: Yes

Heated: Yes  
Finished: Yes  
Enclosed: Yes  
Contiguous: Yes  
Permitted: Yes  
Wet space: No  
Addition: No  
Conversion: No

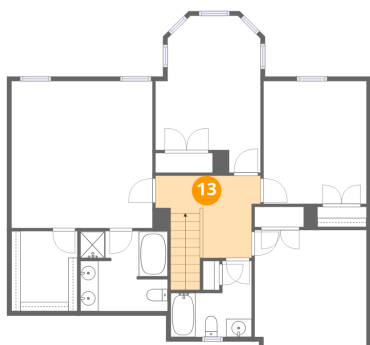
**12** Floor 2 - W.I.C.



Dimensions: 7'3" x 8'10"  
Area: 64 sq. ft  
Counted as living area: Yes

Heated: Yes  
Finished: Yes  
Enclosed: Yes  
Contiguous: Yes  
Permitted: Yes  
Wet space: No  
Addition: No  
Conversion: No

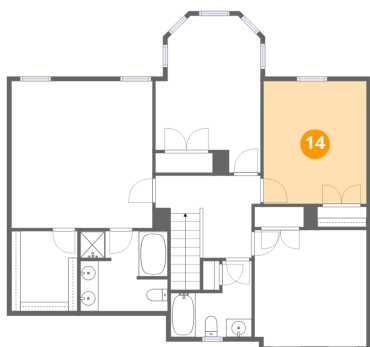
**13** Floor 2 - Hall



Dimensions: 11'7" x 9'1"  
Area: 102 sq. ft  
Counted as living area: Yes

Heated: Yes  
Finished: Yes  
Enclosed: Yes  
Contiguous: Yes  
Permitted: Yes  
Wet space: No  
Addition: No  
Conversion: No

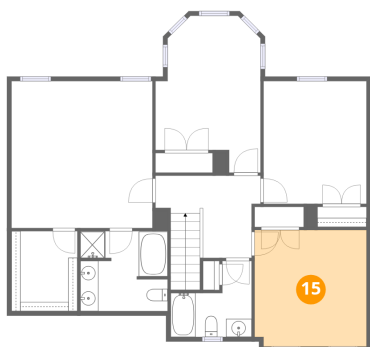
**14** Floor 2 - Bedroom



Dimensions: 11'5" x 13'7"  
Area: 154 sq. ft  
Counted as living area: Yes

Heated: Yes  
Finished: Yes  
Enclosed: Yes  
Contiguous: Yes  
Permitted: Yes  
Wet space: No  
Addition: No  
Conversion: No

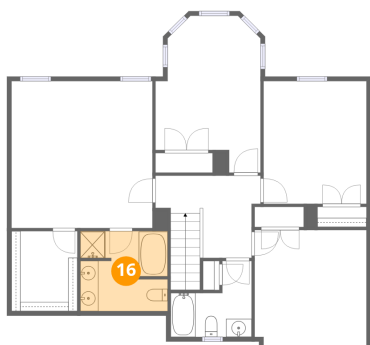
**15** Floor 2 - Bedroom



Dimensions: 12'4" x 12'10"  
Area: 158 sq. ft  
Counted as living area: Yes

Heated: Yes  
Finished: Yes  
Enclosed: Yes  
Contiguous: Yes  
Permitted: Yes  
Wet space: No  
Addition: No  
Conversion: No

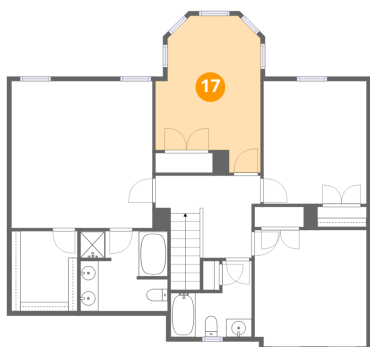
**16** Floor 2 - Primary Bath



Dimensions: 9'8" x 8'10"  
Area: 83 sq. ft  
Counted as living area: Yes

Heated: Yes  
Finished: Yes  
Enclosed: Yes  
Contiguous: Yes  
Permitted: Yes  
Wet space: Yes  
Addition: No  
Conversion: No

**17** Floor 2 - Bedroom

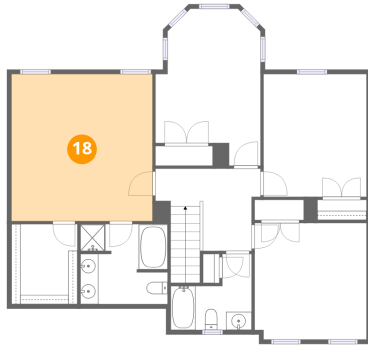


Dimensions: 11'7" x 17'4"  
Area: 165 sq. ft  
Counted as living area: Yes

Heated: Yes  
Finished: Yes  
Enclosed: Yes  
Contiguous: Yes  
Permitted: Yes  
Wet space: No  
Addition: No  
Conversion: No

**18** Floor 2 - Primary Bedroom

---

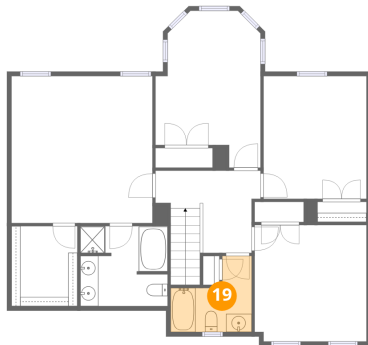


Dimensions: 15'7" x 16'3"  
Area: 253 sq. ft  
Counted as living area: Yes

Heated: Yes  
Finished: Yes  
Enclosed: Yes  
Contiguous: Yes  
Permitted: Yes  
Wet space: No  
Addition: No  
Conversion: No

**19** Floor 2 - Bath

---



Dimensions: 8'11" x 8'5"  
Area: 55 sq. ft  
Counted as living area: Yes

Heated: Yes  
Finished: Yes  
Enclosed: Yes  
Contiguous: Yes  
Permitted: Yes  
Wet space: Yes  
Addition: No  
Conversion: No