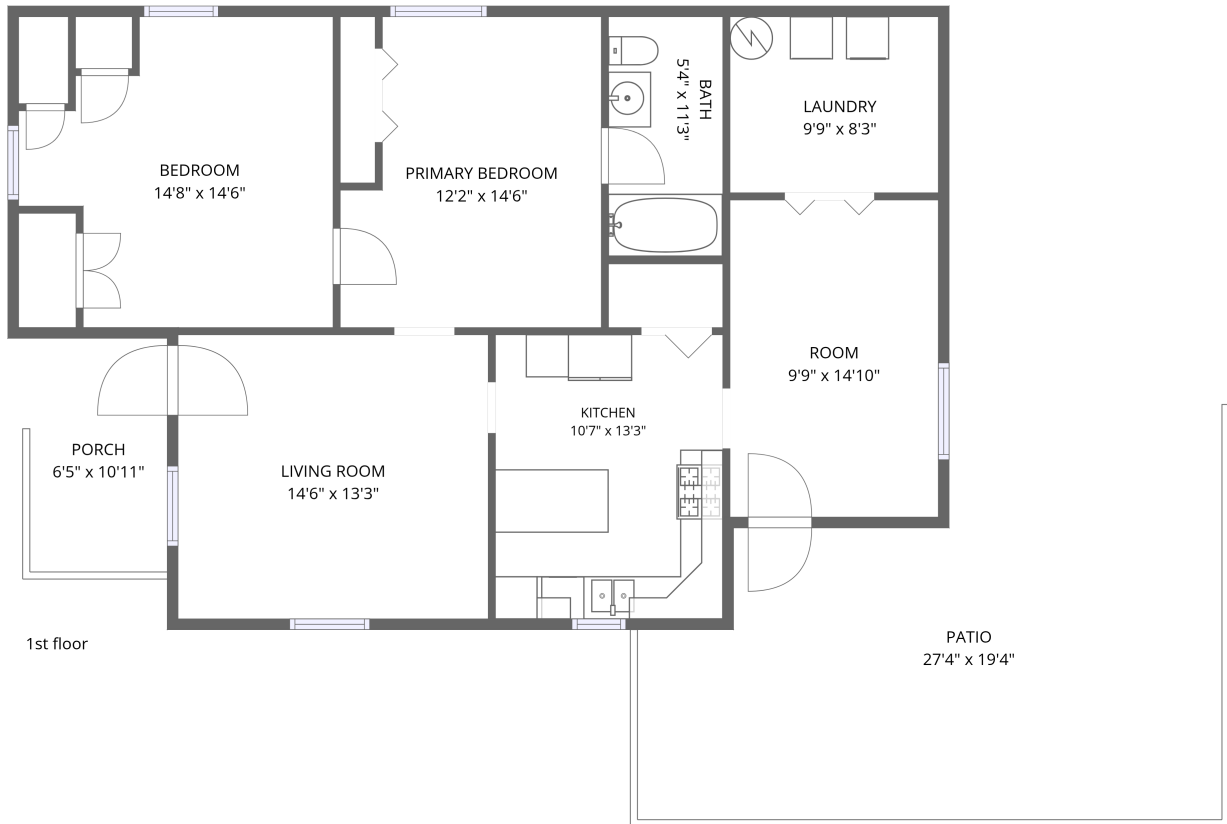


Home data report

326 W Taylor St, Shelbyville, IN, US




**Total Area: 1060 sq. ft**

1st Floor: 1060 sq. ft

Excluded: Patio 425 sq. ft, Porch 70 sq. ft, Walls: 72 sq. ft

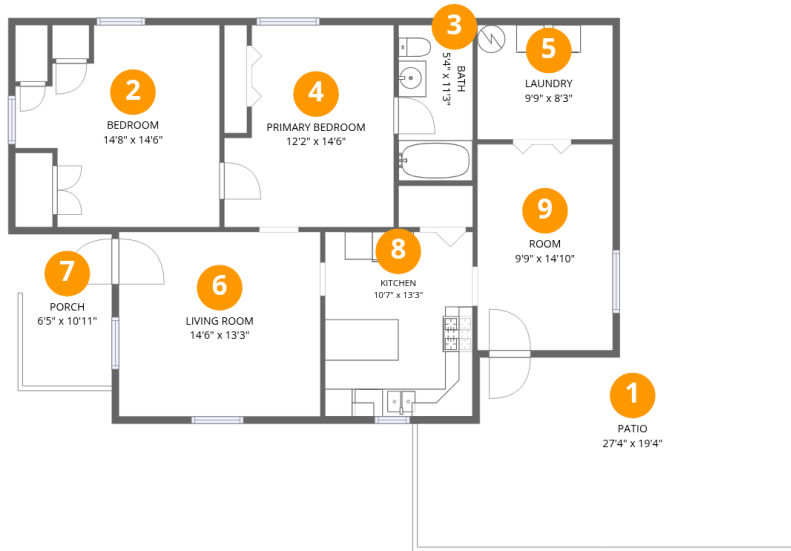
## Property summary

 **1** Floors

 **2** Bedrooms

 **1** Bathrooms

# 326 W Taylor St, Shelbyville, IN, US



## Room dimensions

Floor 1

Total: 1060 sqft

Excluded: 495 sqft

#		Dimensions	sqft	Counted as living area
1	Patio	27'4" x 19'4"	425 sq. ft	No
2	Bedroom	14'8" x 14'6"	176 sq. ft	Yes
3	Bath	5'4" x 11'3"	60 sq. ft	Yes
4	Primary Bedroom	12'2" x 14'6"	161 sq. ft	Yes
5	Laundry	9'9" x 8'3"	80 sq. ft	Yes
6	Living Room	14'6" x 13'3"	192 sq. ft	Yes
7	Porch	6'5" x 10'11"	70 sq. ft	No
8	Kitchen	10'7" x 13'3"	141 sq. ft	Yes
9	Room	9'9" x 14'10"	144 sq. ft	Yes

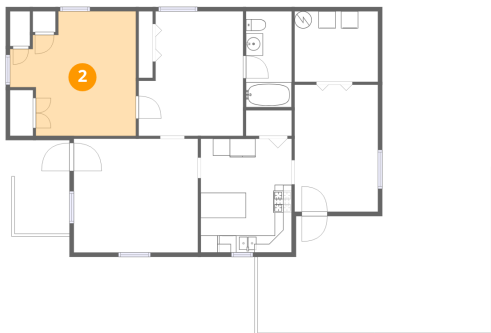
## 1 Floor 1 - Patio



Dimensions: 27'4" x 19'4"  
Area: 425 sq. ft  
Counted as living area: No

Heated: No  
Finished: No  
Enclosed: No  
Contiguous: Yes  
Permitted: Yes  
Wet space: No  
Addition: No  
Conversion: No

## 2 Floor 1 - Bedroom



Dimensions: 14'8" x 14'6"  
Area: 176 sq. ft  
Counted as living area: Yes

Heated: Yes  
Finished: Yes  
Enclosed: Yes  
Contiguous: Yes  
Permitted: Yes  
Wet space: No  
Addition: No  
Conversion: No

### 3 Floor 1 - Bath



Dimensions: 5'4" x 11'3"  
Area: 60 sq. ft  
Counted as living area: Yes

Heated: Yes  
Finished: Yes  
Enclosed: Yes  
Contiguous: Yes  
Permitted: Yes  
Wet space: Yes  
Addition: No  
Conversion: No

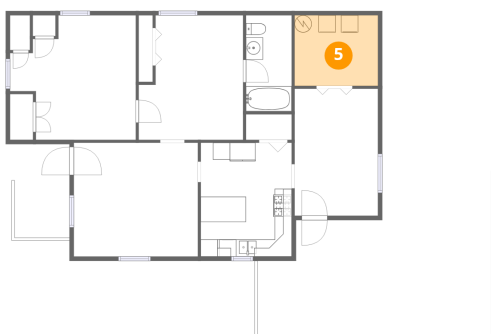
### 4 Floor 1 - Primary Bedroom



Dimensions: 12'2" x 14'6"  
Area: 161 sq. ft  
Counted as living area: Yes

Heated: Yes  
Finished: Yes  
Enclosed: Yes  
Contiguous: Yes  
Permitted: Yes  
Wet space: No  
Addition: No  
Conversion: No

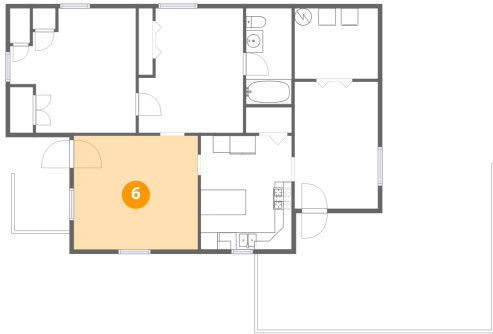
### 5 Floor 1 - Laundry



Dimensions: 9'9" x 8'3"  
Area: 80 sq. ft  
Counted as living area: Yes

Heated: Yes  
Finished: Yes  
Enclosed: Yes  
Contiguous: Yes  
Permitted: Yes  
Wet space: No  
Addition: No  
Conversion: No

## 6 Floor 1 - Living Room



Dimensions: 14'6" x 13'3"  
Area: 192 sq. ft  
Counted as living area: Yes

Heated: Yes  
Finished: Yes  
Enclosed: Yes  
Contiguous: Yes  
Permitted: Yes  
Wet space: No  
Addition: No  
Conversion: No

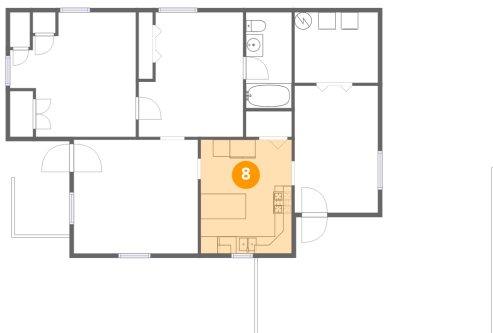
## 7 Floor 1 - Porch



Dimensions: 6'5" x 10'11"  
Area: 70 sq. ft  
Counted as living area: No

Heated: No  
Finished: No  
Enclosed: No  
Contiguous: Yes  
Permitted: Yes  
Wet space: No  
Addition: No  
Conversion: No

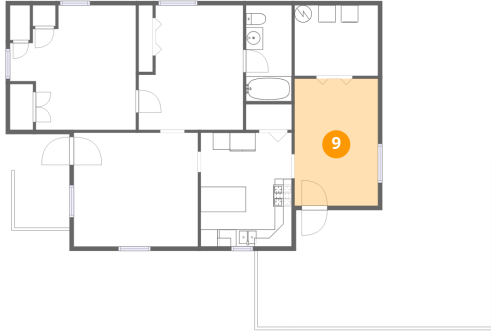
## 8 Floor 1 - Kitchen



Dimensions: 10'7" x 13'3"  
Area: 141 sq. ft  
Counted as living area: Yes

Heated: Yes  
Finished: Yes  
Enclosed: Yes  
Contiguous: Yes  
Permitted: Yes  
Wet space: No  
Addition: No  
Conversion: No

**9** Floor 1 - Room



Dimensions: 9'9" x 14'10"  
Area: 144 sq. ft  
Counted as living area: Yes

Heated: Yes  
Finished: Yes  
Enclosed: Yes  
Contiguous: Yes  
Permitted: Yes  
Wet space: No  
Addition: No  
Conversion: No