

## Home data report

823 Reaume Street, Almonte, Lanark County, Ontario, Canada,  
K0A 1A0



**Total Area: 1510 sq. ft**

Basement: 0 sq. ft, 1st Floor: 662 sq. ft, 2nd Floor: 848 sq. ft

Excluded: Basement 635 sq. ft, Garage 194 sq. ft, Walls: 147 sq. ft

## Property summary

 **3** Floors

 **3** Bedrooms

 **2** Bathrooms

Home data report

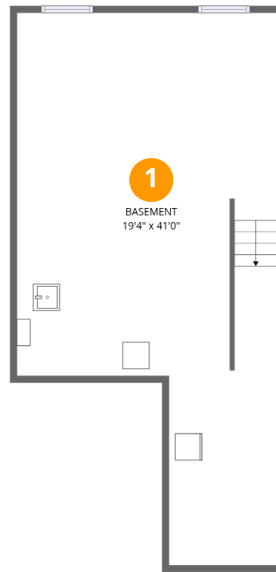
**823 Reaume Street, Almonte, Lanark County, Ontario, Canada,  
K0A 1A0**

 **1**  
Half baths

 **1**  
Garages

Home data report

823 Reaume Street, Almonte, Lanark County, Ontario, Canada,  
K0A 1A0



## Room dimensions

Floor 1 Below grade

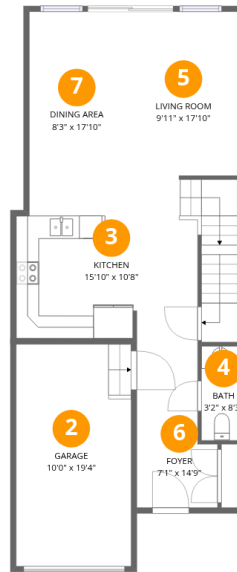
Total:0sqft

Excluded: 635sqft

#		Dimensions	sqft	Counted as living area
1	Basement	19'4" x 41'0"	794 sq. ft	No

## Home data report

823 Reaume Street, Almonte, Lanark County, Ontario, Canada,  
K0A 1A0



## Room dimensions

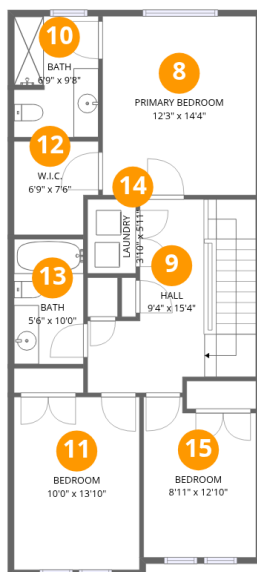
Floor 2

Total:662sqft Excluded: 194sqft

#		Dimensions	sqft	Counted as living area
2	Garage	10'0" x 19'4"	194 sq. ft	No
3	Kitchen	15'10" x 10'8"	169 sq. ft	Yes
4	Bath	3'2" x 8'3"	26 sq. ft	Yes
5	Living Room	9'11" x 17'10"	177 sq. ft	Yes
6	Foyer	7'1" x 14'9"	104 sq. ft	Yes
7	Dining Area	8'3" x 17'10"	147 sq. ft	Yes

Home data report

823 Reaume Street, Almonte, Lanark County, Ontario, Canada, K0A 1A0



## Room dimensions

Floor 3

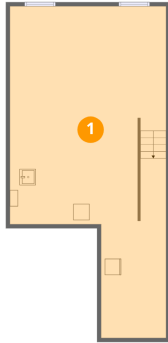
Total:848sqft Excluded: 0sqft

#		Dimensions	sqft	Counted as living area
8	Primary Bedroom	12'3" x 14'4"	175 sq. ft	Yes
9	Hall	9'4" x 15'4"	143 sq. ft	Yes
10	Bath	6'9" x 9'8"	65 sq. ft	Yes
11	Bedroom	10'0" x 13'10"	139 sq. ft	Yes
12	W.I.C.	6'9" x 7'6"	50 sq. ft	Yes
13	Bath	5'6" x 10'0"	55 sq. ft	Yes
14	Laundry	3'10" x 5'11"	23 sq. ft	Yes
15	Bedroom	8'11" x 12'10"	115 sq. ft	Yes

823 Reaume Street, Almonte, Lanark County, Ontario, Canada,  
K0A 1A0

## 1 Floor 1 - Basement

---

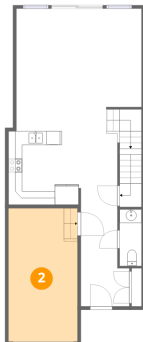


Dimensions: 19'4" x 41'0"  
Area: 794 sq. ft  
Counted as living area: No

Heated: Yes  
Finished: No  
Enclosed: Yes  
Contiguous: Yes  
Permitted: Yes  
Wet space: No  
Addition: No  
Conversion: No

## 2 Floor 2 - Garage

---



Dimensions: 10'0" x 19'4"  
Area: 194 sq. ft  
Counted as living area: No

Heated: No  
Finished: No  
Enclosed: Yes  
Contiguous: Yes  
Permitted: Yes  
Wet space: No  
Addition: No  
Conversion: No

### 3 Floor 2 - Kitchen



Dimensions: 15'10" x 10'8"  
Area: 169 sq. ft  
Counted as living area: Yes

Heated: Yes  
Finished: Yes  
Enclosed: Yes  
Contiguous: Yes  
Permitted: Yes  
Wet space: No  
Addition: No  
Conversion: No

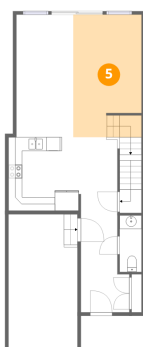
### 4 Floor 2 - Bath



Dimensions: 3'2" x 8'3"  
Area: 26 sq. ft  
Counted as living area: Yes

Heated: Yes  
Finished: Yes  
Enclosed: Yes  
Contiguous: Yes  
Permitted: Yes  
Wet space: Yes  
Addition: No  
Conversion: No

### 5 Floor 2 - Living Room



Dimensions: 9'11" x 17'10"  
Area: 177 sq. ft  
Counted as living area: Yes

Heated: Yes  
Finished: Yes  
Enclosed: Yes  
Contiguous: Yes  
Permitted: Yes  
Wet space: No  
Addition: No  
Conversion: No

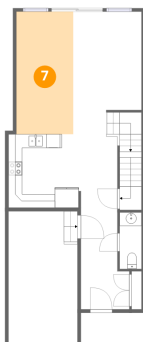
## 6 Floor 2 - Foyer



Dimensions: 7'1" x 14'9"  
Area: 104 sq. ft  
Counted as living area: Yes

Heated: Yes  
Finished: Yes  
Enclosed: Yes  
Contiguous: Yes  
Permitted: Yes  
Wet space: No  
Addition: No  
Conversion: No

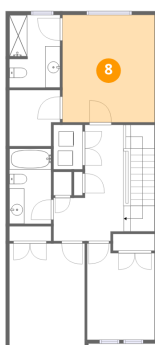
## 7 Floor 2 - Dining Area



Dimensions: 8'3" x 17'10"  
Area: 147 sq. ft  
Counted as living area: Yes

Heated: Yes  
Finished: Yes  
Enclosed: Yes  
Contiguous: Yes  
Permitted: Yes  
Wet space: No  
Addition: No  
Conversion: No

## 8 Floor 3 - Primary Bedroom



Dimensions: 12'3" x 14'4"  
Area: 175 sq. ft  
Counted as living area: Yes

Heated: Yes  
Finished: Yes  
Enclosed: Yes  
Contiguous: Yes  
Permitted: Yes  
Wet space: No  
Addition: No  
Conversion: No

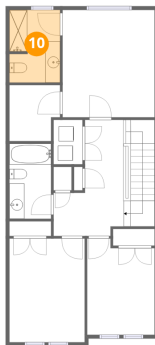
**9** Floor 3 - Hall



Dimensions: 9'4" x 15'4"  
Area: 143 sq. ft  
Counted as living area: Yes

Heated: Yes  
Finished: Yes  
Enclosed: Yes  
Contiguous: Yes  
Permitted: Yes  
Wet space: No  
Addition: No  
Conversion: No

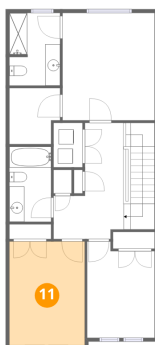
**10** Floor 3 - Bath



Dimensions: 6'9" x 9'8"  
Area: 65 sq. ft  
Counted as living area: Yes

Heated: Yes  
Finished: Yes  
Enclosed: Yes  
Contiguous: Yes  
Permitted: Yes  
Wet space: Yes  
Addition: No  
Conversion: No

**11** Floor 3 - Bedroom

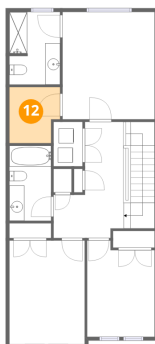


Dimensions: 10'0" x 13'10"  
Area: 139 sq. ft  
Counted as living area: Yes

Heated: Yes  
Finished: Yes  
Enclosed: Yes  
Contiguous: Yes  
Permitted: Yes  
Wet space: No  
Addition: No  
Conversion: No

**12** Floor 3 - W.I.C.

---

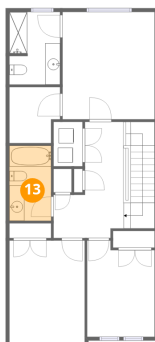


Dimensions: 6'9" x 7'6"  
Area: 50 sq. ft  
Counted as living area: Yes

Heated: Yes  
Finished: Yes  
Enclosed: Yes  
Contiguous: Yes  
Permitted: Yes  
Wet space: No  
Addition: No  
Conversion: No

**13** Floor 3 - Bath

---



Dimensions: 5'6" x 10'0"  
Area: 55 sq. ft  
Counted as living area: Yes

Heated: Yes  
Finished: Yes  
Enclosed: Yes  
Contiguous: Yes  
Permitted: Yes  
Wet space: Yes  
Addition: No  
Conversion: No

**14** Floor 3 - Laundry

---



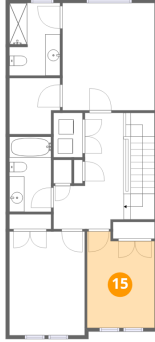
Dimensions: 3'10" x 5'11"  
Area: 23 sq. ft  
Counted as living area: Yes

Heated: Yes  
Finished: Yes  
Enclosed: Yes  
Contiguous: Yes  
Permitted: Yes  
Wet space: No  
Addition: No  
Conversion: No

823 Reaume Street, Almonte, Lanark County, Ontario, Canada,  
K0A 1A0

**15** Floor 3 - Bedroom

---



**Dimensions:** 8'11" x 12'10"  
**Area:** 115 sq. ft  
**Counted as living area:** Yes

**Heated:** Yes  
**Finished:** Yes  
**Enclosed:** Yes  
**Contiguous:** Yes  
**Permitted:** Yes  
**Wet space:** No  
**Addition:** No  
**Conversion:** No