

Home data report

190 Upland Shores Drive, Penhook, Franklin County, Virginia,
United States, 24137



Total Area: 2366 sq. ft

Basement: 764 sq. ft, 1st Floor: 1602 sq. ft

Excluded: Garage 695 sq. ft, Utility 23 sq. ft, Covered patio 307 sq. ft, Patio 293 sq. ft, Fireplace 28 sq. ft, Porch 41 sq. ft, Covered deck 479 sq. ft, Walls: 191 sq. ft

Property summary



Home data report

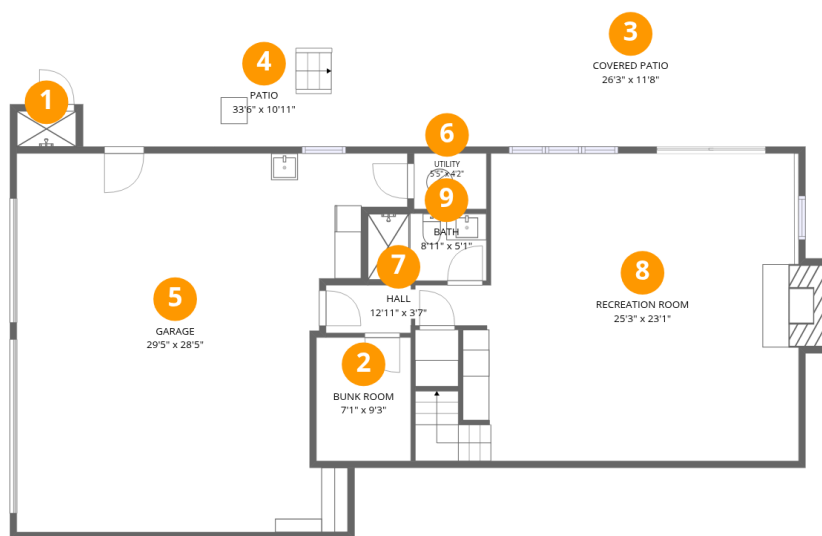
**190 Upland Shores Drive, Penhook, Franklin County, Virginia,
United States, 24137**

 **1**
Half baths

 **1**
Garages

Home data report

190 Upland Shores Drive, Penhook, Franklin County, Virginia, United States, 24137



Room dimensions

Floor 1 Below grade

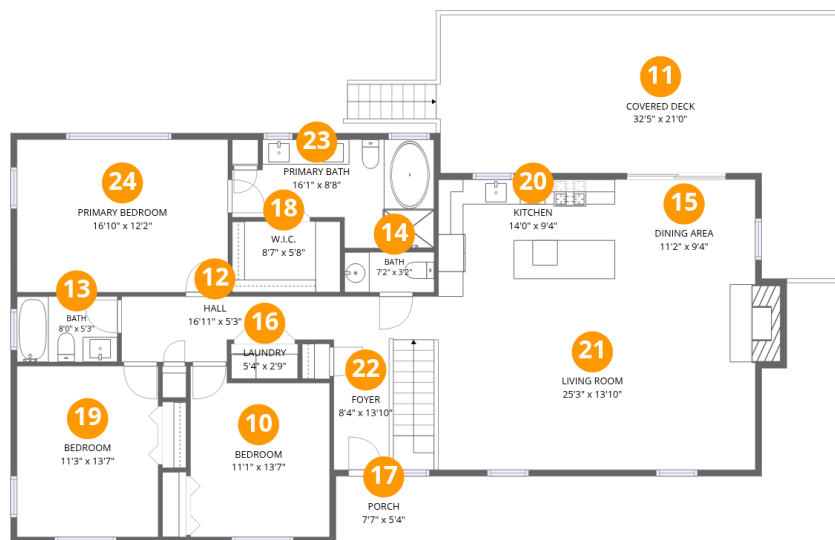
Total:764sqft

Excluded: 1332sqft

#		Dimensions	sqft	Counted as living area
1	Shower	4'6" x 2'8"	12 sq. ft	No
2	Bunk Room	7'1" x 9'3"	66 sq. ft	Yes
3	Covered Patio	26'3" x 11'8"	307 sq. ft	No
4	Patio	33'6" x 10'11"	293 sq. ft	No
5	Garage	29'5" x 28'5"	695 sq. ft	No
6	Utility	5'5" x 4'2"	23 sq. ft	No
7	Hall	12'11" x 3'7"	43 sq. ft	Yes
8	Recreation Room	25'3" x 23'1"	586 sq. ft	Yes
9	Bath	8'11" x 5'1"	45 sq. ft	Yes

Home data report

190 Upland Shores Drive, Penhook, Franklin County, Virginia, United States, 24137



Room dimensions

Floor 2

Total:1602sqft Excluded: 534sqft

#		Dimensions	sqft	Counted as living area
10	Bedroom	11'1" x 13'7"	140 sq. ft	Yes
11	Covered Deck	32'5" x 21'0"	479 sq. ft	No
12	Hall	16'11" x 5'3"	73 sq. ft	Yes
13	Bath	8'0" x 5'3"	42 sq. ft	Yes
14	Bath	7'2" x 3'2"	23 sq. ft	Yes
15	Dining Area	11'2" x 9'4"	106 sq. ft	Yes
16	Laundry	5'4" x 2'9"	15 sq. ft	Yes
17	Porch	7'7" x 5'4"	41 sq. ft	No
18	W.I.C.	8'7" x 5'8"	49 sq. ft	Yes
19	Bedroom	11'3" x 13'7"	153 sq. ft	Yes
20	Kitchen	14'0" x 9'4"	131 sq. ft	Yes

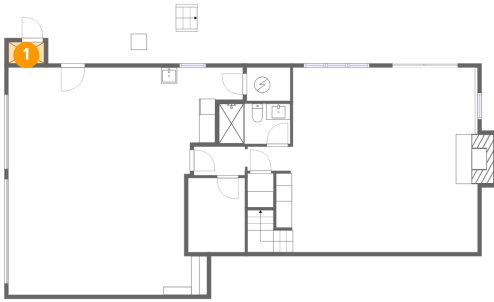
Home data report

**190 Upland Shores Drive, Penhook, Franklin County, Virginia,
United States, 24137**

#		Dimensions	sqft	Counted as living area
21	Living Room	25'3" x 13'10"	359 sq. ft	Yes
22	Foyer	8'4" x 13'10"	115 sq. ft	Yes
23	Primary Bath	16'1" x 8'8"	111 sq. ft	Yes
24	Primary Bedroom	16'10" x 12'2"	204 sq. ft	Yes

190 Upland Shores Drive, Penhook, Franklin County, Virginia,
United States, 24137

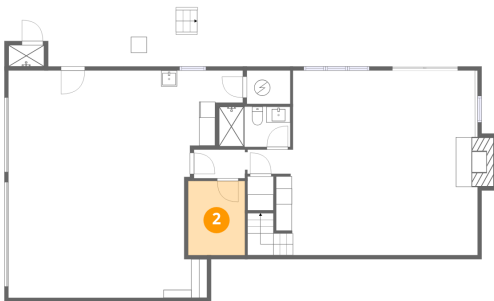
1 Floor 1 - Shower



Dimensions: 4'6" x 2'8"
Area: 12 sq. ft
Counted as living area: No

Heated: No
Finished: No
Enclosed: No
Contiguous: Yes
Permitted: No
Wet space: No
Addition: No
Conversion: No

2 Floor 1 - Bunk Room

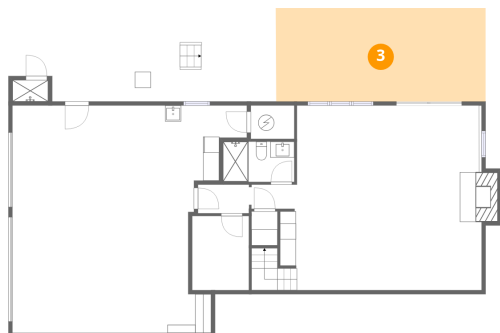


Dimensions: 7'1" x 9'3"
Area: 66 sq. ft
Counted as living area: Yes

Heated: Yes
Finished: Yes
Enclosed: Yes
Contiguous: Yes
Permitted: Yes
Wet space: No
Addition: No
Conversion: No

190 Upland Shores Drive, Penhook, Franklin County, Virginia,
United States, 24137

3 Floor 1 - Covered Patio



Dimensions: 26'3" x 11'8"
Area: 307 sq. ft
Counted as living area: No

Heated: No
Finished: No
Enclosed: No
Contiguous: Yes
Permitted: Yes
Wet space: No
Addition: No
Conversion: No

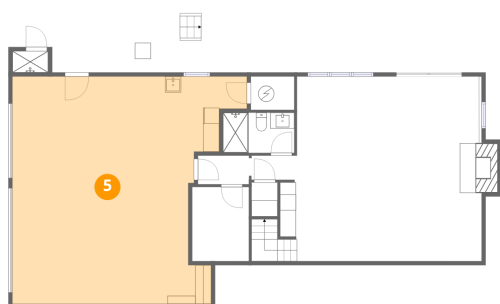
4 Floor 1 - Patio



Dimensions: 33'6" x 10'11"
Area: 293 sq. ft
Counted as living area: No

Heated: No
Finished: No
Enclosed: No
Contiguous: Yes
Permitted: Yes
Wet space: No
Addition: No
Conversion: No

5 Floor 1 - Garage



Dimensions: 29'5" x 28'5"
Area: 695 sq. ft
Counted as living area: No

Heated: No
Finished: No
Enclosed: Yes
Contiguous: Yes
Permitted: Yes
Wet space: No
Addition: No
Conversion: No

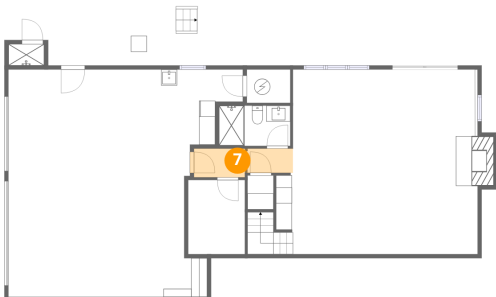
6 Floor 1 - Utility



Dimensions: 5'5" x 4'2"
Area: 23 sq. ft
Counted as living area: No

Heated: Yes
Finished: No
Enclosed: Yes
Contiguous: Yes
Permitted: Yes
Wet space: No
Addition: No
Conversion: No

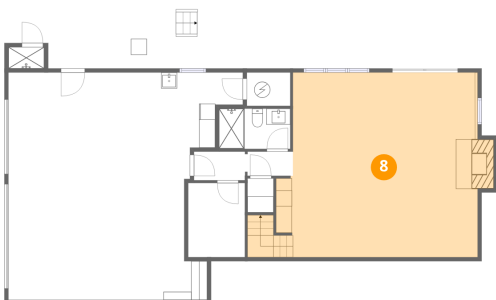
7 Floor 1 - Hall



Dimensions: 12'11" x 3'7"
Area: 43 sq. ft
Counted as living area: Yes

Heated: Yes
Finished: Yes
Enclosed: Yes
Contiguous: Yes
Permitted: Yes
Wet space: No
Addition: No
Conversion: No

8 Floor 1 - Recreation Room



Dimensions: 25'3" x 23'1"
Area: 586 sq. ft
Counted as living area: Yes

Heated: Yes
Finished: Yes
Enclosed: Yes
Contiguous: Yes
Permitted: Yes
Wet space: No
Addition: No
Conversion: No

190 Upland Shores Drive, Penhook, Franklin County, Virginia,
United States, 24137

9 Floor 1 - Bath



Dimensions: 8'11" x 5'1"
Area: 45 sq. ft
Counted as living area: Yes

Heated: Yes
Finished: Yes
Enclosed: Yes
Contiguous: Yes
Permitted: Yes
Wet space: Yes
Addition: No
Conversion: No

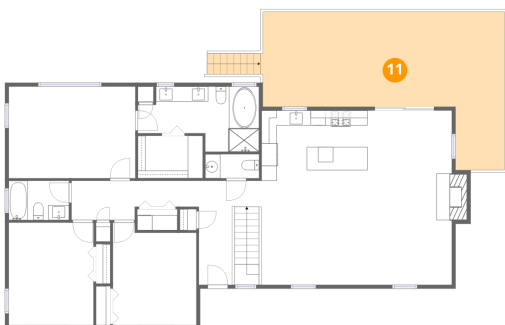
10 Floor 2 - Bedroom



Dimensions: 11'1" x 13'7"
Area: 140 sq. ft
Counted as living area: Yes

Heated: Yes
Finished: Yes
Enclosed: Yes
Contiguous: Yes
Permitted: Yes
Wet space: No
Addition: No
Conversion: No

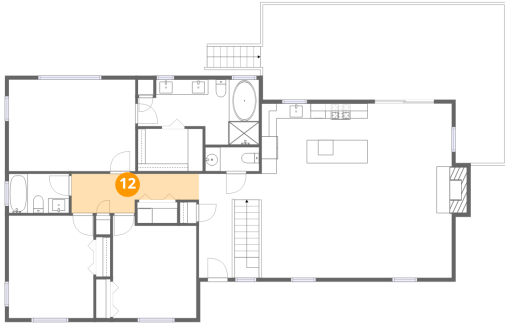
11 Floor 2 - Covered Deck



Dimensions: 32'5" x 21'0"
Area: 479 sq. ft
Counted as living area: No

Heated: No
Finished: No
Enclosed: No
Contiguous: Yes
Permitted: Yes
Wet space: No
Addition: No
Conversion: No

12 Floor 2 - Hall



Dimensions: 16'11" x 5'3"
Area: 73 sq. ft
Counted as living area: Yes

Heated: Yes
Finished: Yes
Enclosed: Yes
Contiguous: Yes
Permitted: Yes
Wet space: No
Addition: No
Conversion: No

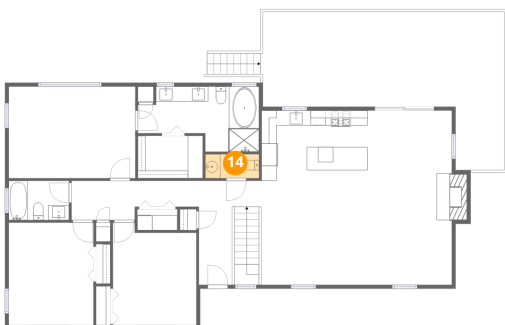
13 Floor 2 - Bath



Dimensions: 8'0" x 5'3"
Area: 42 sq. ft
Counted as living area: Yes

Heated: Yes
Finished: Yes
Enclosed: Yes
Contiguous: Yes
Permitted: Yes
Wet space: Yes
Addition: No
Conversion: No

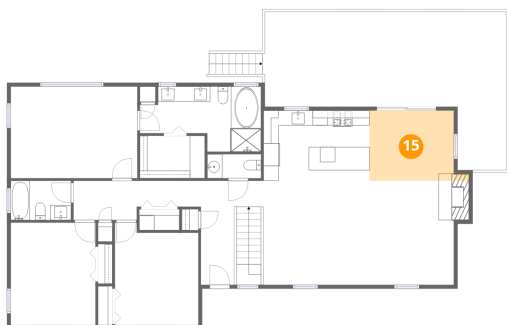
14 Floor 2 - Bath



Dimensions: 7'2" x 3'2"
Area: 23 sq. ft
Counted as living area: Yes

Heated: Yes
Finished: Yes
Enclosed: Yes
Contiguous: Yes
Permitted: Yes
Wet space: Yes
Addition: No
Conversion: No

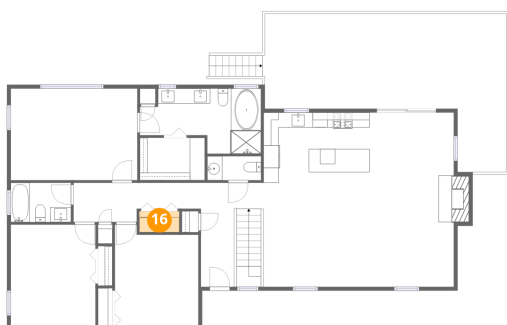
15 Floor 2 - Dining Area



Dimensions: 11'2" x 9'4"
Area: 106 sq. ft
Counted as living area: Yes

Heated: Yes
Finished: Yes
Enclosed: Yes
Contiguous: Yes
Permitted: Yes
Wet space: No
Addition: No
Conversion: No

16 Floor 2 - Laundry



Dimensions: 5'4" x 2'9"
Area: 15 sq. ft
Counted as living area: Yes

Heated: Yes
Finished: Yes
Enclosed: Yes
Contiguous: Yes
Permitted: Yes
Wet space: No
Addition: No
Conversion: No

17 Floor 2 - Porch



Dimensions: 7'7" x 5'4"
Area: 41 sq. ft
Counted as living area: No

Heated: No
Finished: No
Enclosed: No
Contiguous: Yes
Permitted: Yes
Wet space: No
Addition: No
Conversion: No

190 Upland Shores Drive, Penhook, Franklin County, Virginia,
United States, 24137

18 Floor 2 - W.I.C.



Dimensions: 8'7" x 5'8"
Area: 49 sq. ft
Counted as living area: Yes

Heated: Yes
Finished: Yes
Enclosed: Yes
Contiguous: Yes
Permitted: Yes
Wet space: No
Addition: No
Conversion: No

19 Floor 2 - Bedroom



Dimensions: 11'3" x 13'7"
Area: 153 sq. ft
Counted as living area: Yes

Heated: Yes
Finished: Yes
Enclosed: Yes
Contiguous: Yes
Permitted: Yes
Wet space: No
Addition: No
Conversion: No

20 Floor 2 - Kitchen



Dimensions: 14'0" x 9'4"
Area: 131 sq. ft
Counted as living area: Yes

Heated: Yes
Finished: Yes
Enclosed: Yes
Contiguous: Yes
Permitted: Yes
Wet space: No
Addition: No
Conversion: No

190 Upland Shores Drive, Penhook, Franklin County, Virginia,
United States, 24137

21 Floor 2 - Living Room



Dimensions: 25'3" x 13'10"
Area: 359 sq. ft
Counted as living area: Yes

Heated: Yes
Finished: Yes
Enclosed: Yes
Contiguous: Yes
Permitted: Yes
Wet space: No
Addition: No
Conversion: No

22 Floor 2 - Foyer



Dimensions: 8'4" x 13'10"
Area: 115 sq. ft
Counted as living area: Yes

Heated: Yes
Finished: Yes
Enclosed: Yes
Contiguous: Yes
Permitted: Yes
Wet space: No
Addition: No
Conversion: No

23 Floor 2 - Primary Bath



Dimensions: 16'1" x 8'8"
Area: 111 sq. ft
Counted as living area: Yes

Heated: Yes
Finished: Yes
Enclosed: Yes
Contiguous: Yes
Permitted: Yes
Wet space: Yes
Addition: No
Conversion: No

190 Upland Shores Drive, Penhook, Franklin County, Virginia,
United States, 24137

24 Floor 2 - Primary Bedroom



Dimensions: 16'10" x 12'2"
Area: 204 sq. ft
Counted as living area: Yes

Heated: Yes
Finished: Yes
Enclosed: Yes
Contiguous: Yes
Permitted: Yes
Wet space: No
Addition: No
Conversion: No