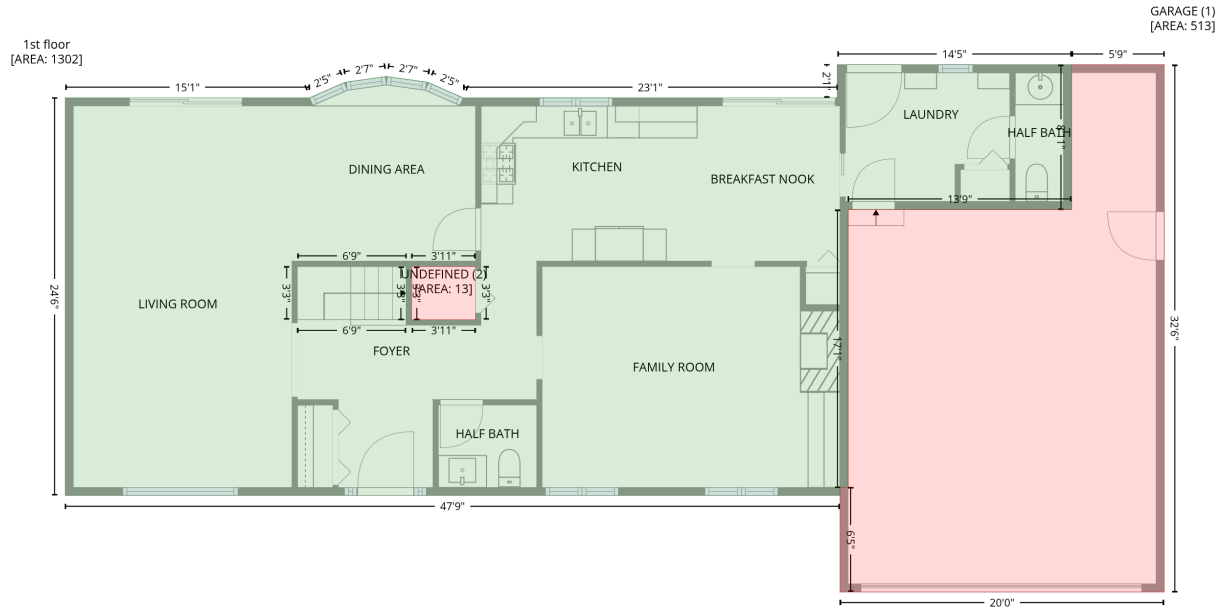


204 Royal Road, Jamestown, Guilford County, North Carolina, United States, 27282

Gross Living Area: 2288 sq. ft

Level 1



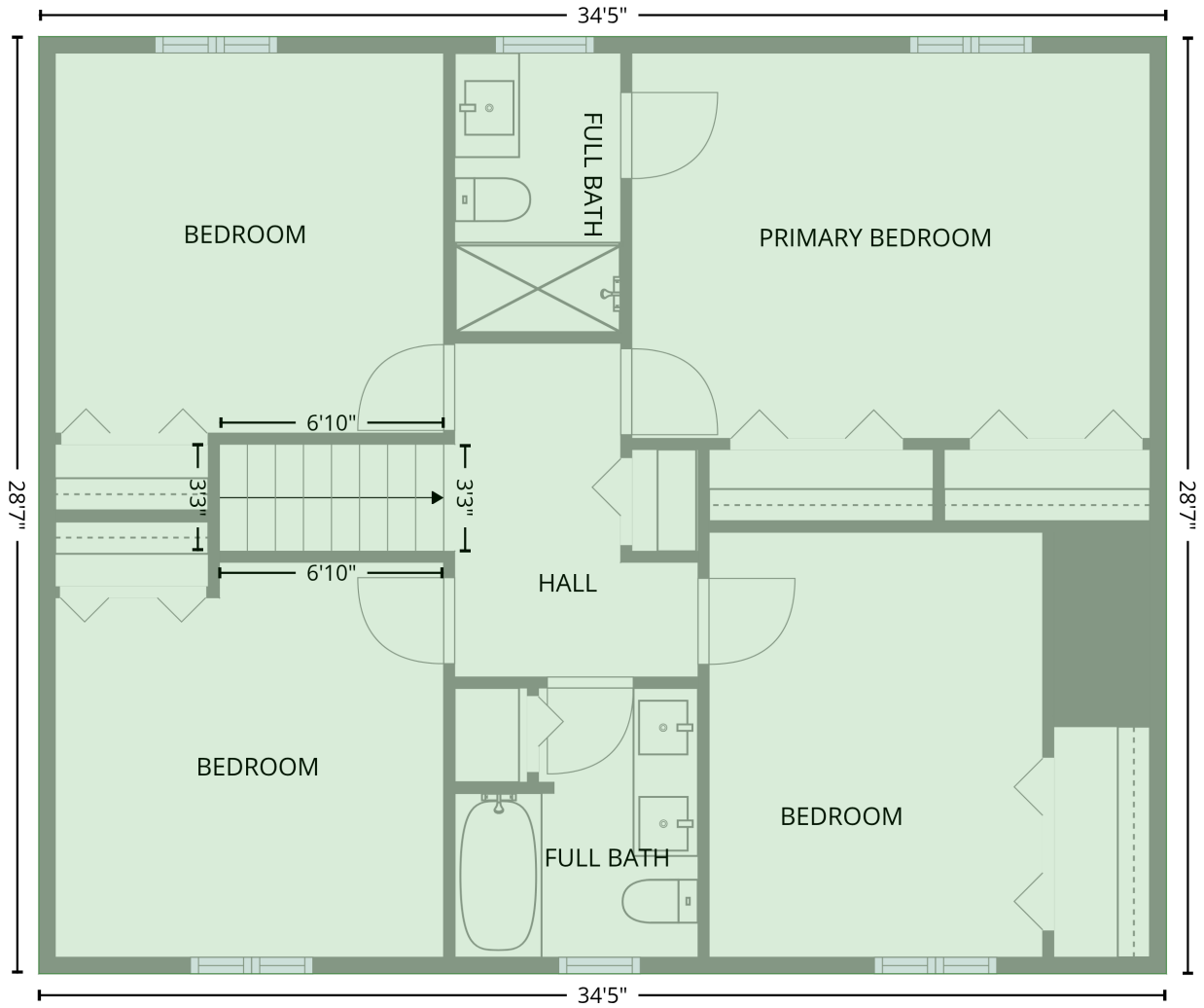
Space	Area (sq. ft)	Calculation
1st floor (Living area)	1302	Coordinate Polygon Area Algorithm using inches $-((740.2 + 740.2) * (90.9 - 198) + (740.2 + 574.8) * (198 - 198) + (574.8 + 574.8) * (198 - 403.4) + (574.8 + 568.8) * (403.4 - 403.4) + (568.8 + 568.8) * (403.4 - 409.4) + (568.8 + -4.4) * (409.4 - 409.4) + (-4.4 + -4.4) * (409.4 - 115.4) + (-4.4 + 176.4) * (115.4 - 115.4) + (176.4 + 202.7) * (115.4 - 103.9) + (202.7 + 233.2) * (103.9 - 99.7) + (233.2 + 263.8) * (99.7 - 103.9) + (263.8 + 290) * (103.9 - 115.4) + (290 + 566.8) * (115.4 - 115.4) + (566.8 + 566.8) * (115.4 - 90.9) + (566.8 + 740.2) * (90.9 - 90.9)) * 0.5 * 0.00694 + -((299.1 + 251.8) * (240.2 - 240.2) + (251.8 + 251.8) * (240.2 - 279.5) + (251.8 + 299.1) * (279.5 - 279.5) + (299.1 + 299.1) * (279.5 - 240.2)) * 0.5 * 0.00694$
GARAGE (Non-living area)	513	$-((808.7 + 808.7) * (90.9 - 480.7) + (808.7 + 568.8) * (480.7 - 480.7) + (568.8 + 568.8) * (480.7 - 403.4) + (568.8 + 574.8) * (403.4 - 403.4) + (574.8 + 574.8) * (403.4 - 198) + (574.8 + 740.2) * (198 - 198) + (740.2 + 740.2) * (198 - 90.9) + (740.2 + 808.7) * (90.9 - 90.9)) * 0.5 * 0.00694$
UNDEFINED (Non-living area)	13	$-((299.1 + 299.1) * (240.2 - 279.5) + (299.1 + 251.8) * (279.5 - 279.5) + (251.8 + 251.8) * (279.5 - 240.2) + (251.8 + 299.1) * (240.2 - 240.2)) * 0.5 * 0.00694$

204 Royal Road, Jamestown, Guilford County, North Carolina, United States, 27282

Gross Living Area: 2288 sq. ft

Level 2

2nd floor
[AREA: 986]



Space	Area (sq. ft)	Calculation <small>Coordinate Polygon Area Algorithm using inches</small>
2nd floor (Living area)	986	$-((574.8 + 574.8) * (90.9 - 434.3) + (574.8 + 161.3) * (434.3 - 434.3) + (161.3 + 161.3) * (434.3 - 90.9) + (161.3 + 574.8) * (90.9 - 90.9)) * 0.5 * 0.00694$