

## Home data report

120 Freeland Road, Portland, Sumner County,  
Tennessee, United States, 37148



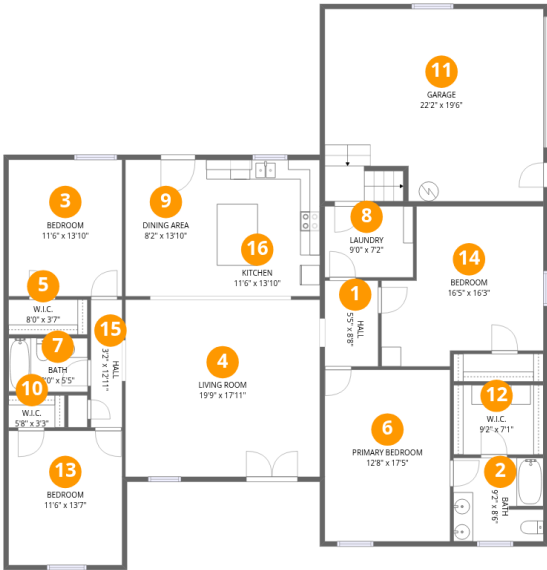
**Total Area: 2232 sq. ft**

Floor 1: 1882 sq. ft, Floor 2: 350 sq. ft

Excluded: Garage 428 sq. ft, Low ceiling 82 sq. ft, Walls: 178 sq. ft

## Property summary





Room dimensions

Floor 1 Total:1882sqft    Excluded: 428sqft

#		Dimensions	sqft	Counted as living area
1	Hall	5'5" x 8'8"	47 sq. ft	Yes
2	Bath	9'2" x 8'6"	76 sq. ft	Yes
3	Bedroom	11'6" x 13'10"	159 sq. ft	Yes
4	Living Room	19'9" x 17'11"	354 sq. ft	Yes
5	W.I.C.	8'0" x 3'7"	28 sq. ft	Yes
6	Primary Bedroom	12'8" x 17'5"	221 sq. ft	Yes
7	Bath	8'0" x 5'5"	44 sq. ft	Yes
8	Laundry	9'0" x 7'2"	64 sq. ft	Yes
9	Dining Area	8'2" x 13'10"	113 sq. ft	Yes
10	W.I.C.	5'8" x 3'3"	19 sq. ft	Yes
11	Garage	22'2" x 19'6"	428 sq. ft	No

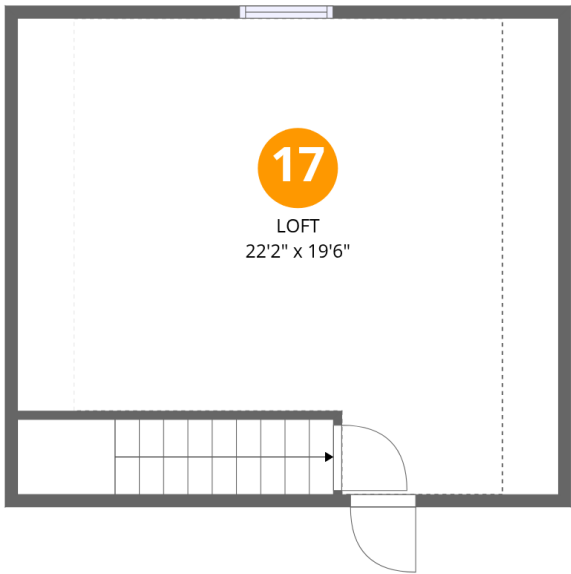
## Home data report

**120 Freeland Road, Portland, Sumner County,  
Tennessee, United States, 37148**



#		Dimensions	sqft	Counted as living area
12	W.I.C.	9'2" x 7'1"	64 sq. ft	Yes
13	Bedroom	11'6" x 13'7"	157 sq. ft	Yes
14	Bedroom	16'5" x 16'3"	224 sq. ft	Yes
15	Hall	3'2" x 12'11"	41 sq. ft	Yes
16	Kitchen	11'6" x 13'10"	159 sq. ft	Yes

120 Freeland Road, Portland, Sumner County,  
Tennessee, United States, 37148

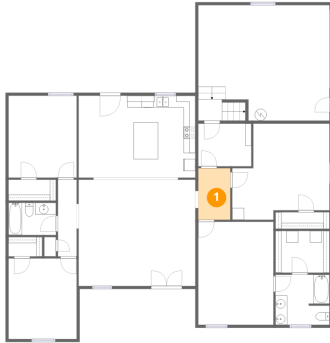


Room dimensions

Floor 2 Total:350sqft   Excluded: 82sqft

#		Dimensions	sqft	Counted as living area
17	Loft	22'2" x 19'6"	305 sq. ft	Yes

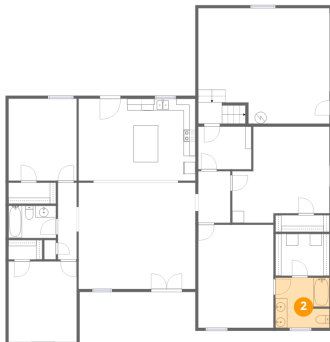
## 1 Floor 1 - Hall



Dimensions: 5'5" x 8'8"  
Area: 47 sq. ft  
Counted as living area: Yes

Heated: Yes  
Finished: Yes  
Enclosed: Yes  
Contiguous: Yes  
Permitted: Yes  
Wet space: No  
Addition: No  
Conversion: No

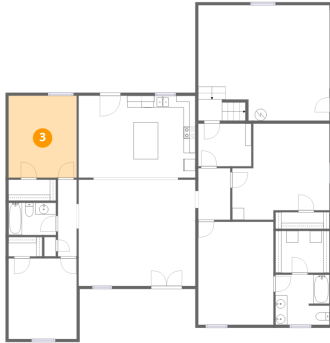
## 2 Floor 1 - Bath



Dimensions: 9'2" x 8'6"  
Area: 76 sq. ft  
Counted as living area: Yes

Heated: Yes  
Finished: Yes  
Enclosed: Yes  
Contiguous: Yes  
Permitted: Yes  
Wet space: Yes  
Addition: No  
Conversion: No

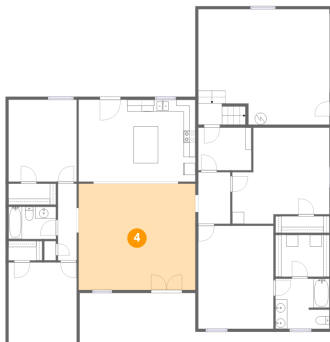
### 3 Floor 1 - Bedroom



Dimensions: 11'6" x 13'10"  
Area: 159 sq. ft  
Counted as living area: Yes

Heated: Yes  
Finished: Yes  
Enclosed: Yes  
Contiguous: Yes  
Permitted: Yes  
Wet space: No  
Addition: No  
Conversion: No

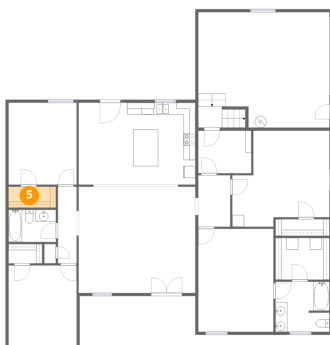
### 4 Floor 1 - Living Room



Dimensions: 19'9" x 17'11"  
Area: 354 sq. ft  
Counted as living area: Yes

Heated: Yes  
Finished: Yes  
Enclosed: Yes  
Contiguous: Yes  
Permitted: Yes  
Wet space: No  
Addition: No  
Conversion: No

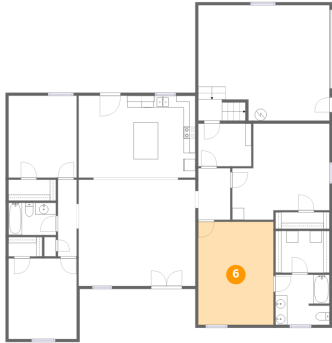
### 5 Floor 1 - W.I.C.



Dimensions: 8'0" x 3'7"  
Area: 28 sq. ft  
Counted as living area: Yes

Heated: Yes  
Finished: Yes  
Enclosed: Yes  
Contiguous: Yes  
Permitted: Yes  
Wet space: No  
Addition: No  
Conversion: No

## 6 Floor 1 - Primary Bedroom



Dimensions: 12'8" x 17'5"  
Area: 221 sq. ft  
Counted as living area: Yes

Heated: Yes  
Finished: Yes  
Enclosed: Yes  
Contiguous: Yes  
Permitted: Yes  
Wet space: No  
Addition: No  
Conversion: No

## 7 Floor 1 - Bath



Dimensions: 8'0" x 5'5"  
Area: 44 sq. ft  
Counted as living area: Yes

Heated: Yes  
Finished: Yes  
Enclosed: Yes  
Contiguous: Yes  
Permitted: Yes  
Wet space: Yes  
Addition: No  
Conversion: No

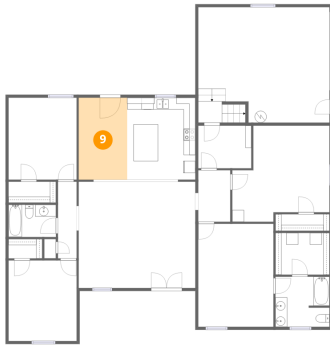
## 8 Floor 1 - Laundry



Dimensions: 9'0" x 7'2"  
Area: 64 sq. ft  
Counted as living area: Yes

Heated: Yes  
Finished: Yes  
Enclosed: Yes  
Contiguous: Yes  
Permitted: Yes  
Wet space: No  
Addition: No  
Conversion: No

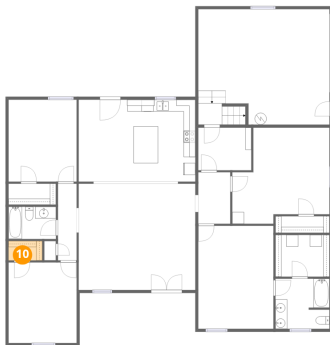
## 9 Floor 1 - Dining Area



Dimensions: 8'2" x 13'10"  
Area: 113 sq. ft  
Counted as living area: Yes

Heated: Yes  
Finished: Yes  
Enclosed: Yes  
Contiguous: Yes  
Permitted: Yes  
Wet space: No  
Addition: No  
Conversion: No

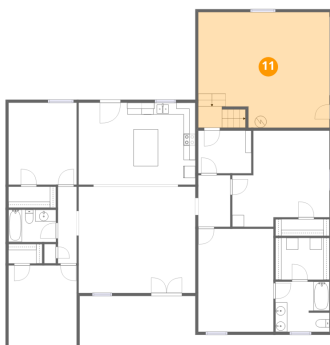
## 10 Floor 1 - W.I.C.



Dimensions: 5'8" x 3'3"  
Area: 19 sq. ft  
Counted as living area: Yes

Heated: Yes  
Finished: Yes  
Enclosed: Yes  
Contiguous: Yes  
Permitted: Yes  
Wet space: No  
Addition: No  
Conversion: No

## 11 Floor 1 - Garage

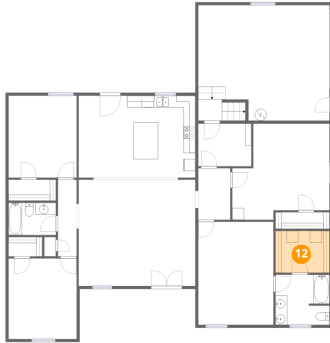


Dimensions: 22'2" x 19'6"  
Area: 428 sq. ft  
Counted as living area: No

Heated: No  
Finished: No  
Enclosed: Yes  
Contiguous: Yes  
Permitted: Yes  
Wet space: No  
Addition: No  
Conversion: No



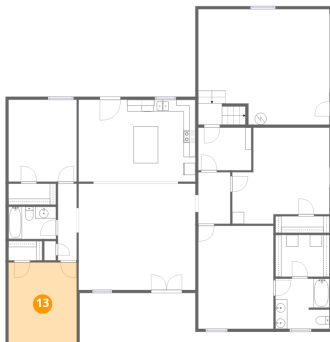
## 12 Floor 1 - W.I.C.



Dimensions: 9'2" x 7'1"  
Area: 64 sq. ft  
Counted as living area: Yes

Heated: Yes  
Finished: Yes  
Enclosed: Yes  
Contiguous: Yes  
Permitted: Yes  
Wet space: No  
Addition: No  
Conversion: No

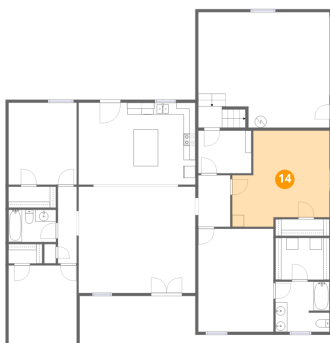
## 13 Floor 1 - Bedroom



Dimensions: 11'6" x 13'7"  
Area: 157 sq. ft  
Counted as living area: Yes

Heated: Yes  
Finished: Yes  
Enclosed: Yes  
Contiguous: Yes  
Permitted: Yes  
Wet space: No  
Addition: No  
Conversion: No

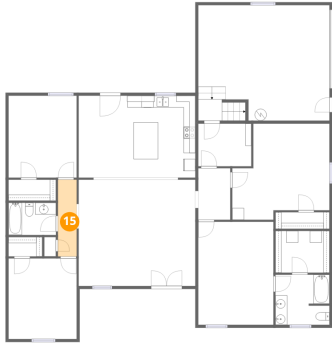
## 14 Floor 1 - Bedroom



Dimensions: 16'5" x 16'3"  
Area: 224 sq. ft  
Counted as living area: Yes

Heated: Yes  
Finished: Yes  
Enclosed: Yes  
Contiguous: Yes  
Permitted: Yes  
Wet space: No  
Addition: No  
Conversion: No

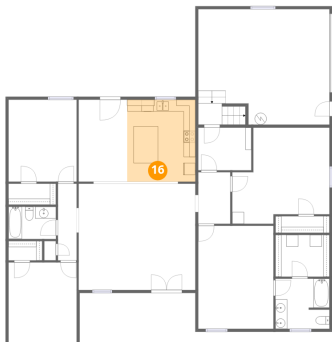
## 15 Floor 1 - Hall



Dimensions: 3'2" x 12'11"  
Area: 41 sq. ft  
Counted as living area: Yes

Heated: Yes  
Finished: Yes  
Enclosed: Yes  
Contiguous: Yes  
Permitted: Yes  
Wet space: No  
Addition: No  
Conversion: No

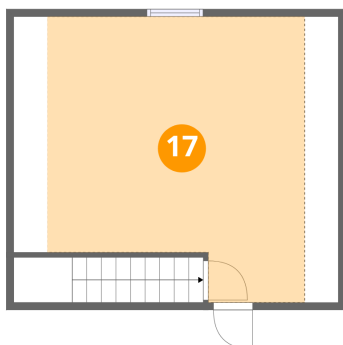
## 16 Floor 1 - Kitchen



Dimensions: 11'6" x 13'10"  
Area: 159 sq. ft  
Counted as living area: Yes

Heated: Yes  
Finished: Yes  
Enclosed: Yes  
Contiguous: Yes  
Permitted: Yes  
Wet space: No  
Addition: No  
Conversion: No

## 17 Floor 2 - Loft



Dimensions: 22'2" x 19'6"  
Area: 305 sq. ft  
Counted as living area: Yes

Heated: Yes  
Finished: Yes  
Enclosed: Yes  
Contiguous: Yes  
Permitted: Yes  
Wet space: No  
Addition: No  
Conversion: No