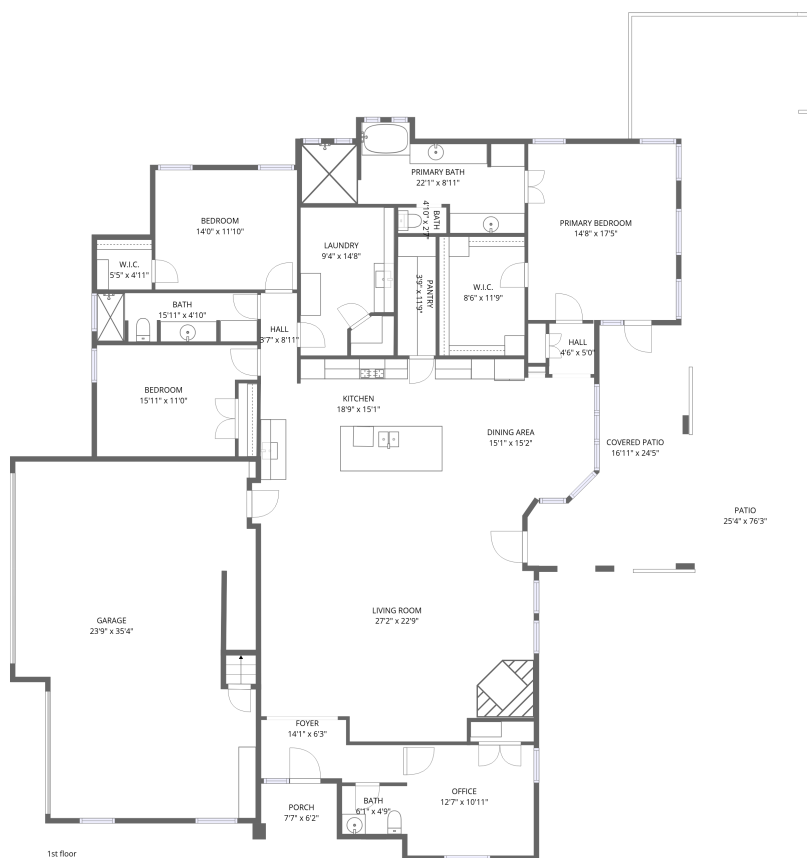


Home data report

8120 Belmont Court, Thornbridge, North Richland Hills, Tarrant County, Texas, United States, 76182



Total Area: 2582 sq. ft

1st Floor: 2582 sq. ft

Excluded: Patio 1041 sq. ft, Covered patio 293 sq. ft, Porch 46 sq. ft, Garage 770 sq. ft,

Walls: 176 sq. ft

Property summary

 **1** Floors

 **3** Bedrooms

 **2** Bathrooms

Scan captured on Fri, 17 Apr 2026 00:21:52 GMT

FLOOR PLAN CREATED BY CUBICASA APP. MEASUREMENTS DEEMED HIGHLY RELIABLE BUT NOT GUARANTEED.

Home data report

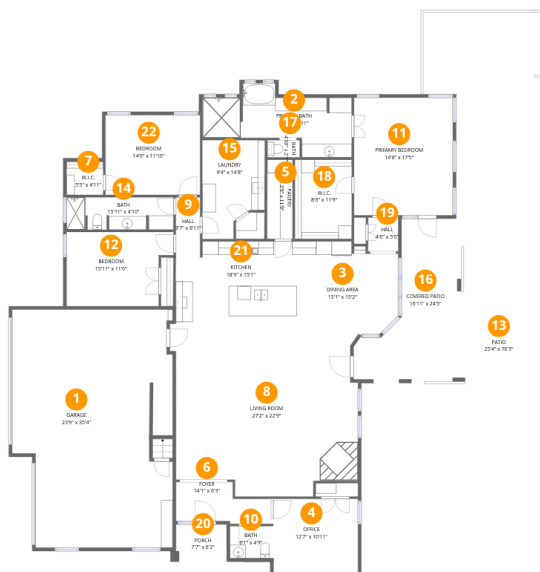
8120 Belmont Court, Thornbridge, North Richland Hills, Tarrant County, Texas, United States, 76182

 **1**
Half baths

 **1**
Garages

Home data report

8120 Belmont Court, Thornbridge, North Richland Hills, Tarrant County, Texas, United States, 76182



Room dimensions

Floor 1

Total:2582sqft

Excluded: 2150sqft

#		Dimensions	sqft	Counted as living area
1	Garage	23'9" x 35'4"	839 sq. ft	No
2	Primary Bath	22'1" x 8'11"	198 sq. ft	Yes
3	Dining Area	15'1" x 15'2"	228 sq. ft	Yes
4	Office	12'7" x 10'11"	137 sq. ft	Yes
5	Pantry	3'9" x 11'9"	44 sq. ft	Yes
6	Foyer	14'1" x 6'3"	88 sq. ft	Yes
7	W.I.C.	5'5" x 4'11"	27 sq. ft	Yes
8	Living Room	27'2" x 22'9"	616 sq. ft	Yes
9	Hall	3'7" x 8'11"	32 sq. ft	Yes
10	Bath	6'1" x 4'9"	29 sq. ft	Yes
11	Primary Bedroom	14'8" x 17'5"	256 sq. ft	Yes

Scan captured on Fri, 17 Apr 2026 00:21:52 GMT

FLOOR PLAN CREATED BY CUBICASA APP. MEASUREMENTS DEEMED HIGHLY RELIABLE BUT NOT GUARANTEED.

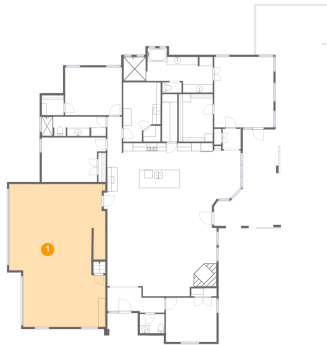
Home data report

8120 Belmont Court, Thornbridge, North Richland Hills, Tarrant County, Texas, United States, 76182

#		Dimensions	sqft	Counted as living area
12	Bedroom	15'11" x 11'0"	175 sq. ft	Yes
13	Patio	25'4" x 76'3"	1934 sq. ft	No
14	Bath	15'11" x 4'10"	77 sq. ft	Yes
15	Laundry	9'4" x 14'8"	137 sq. ft	Yes
16	Covered Patio	16'11" x 24'5"	414 sq. ft	No
17	Bath	4'10" x 2'7"	12 sq. ft	Yes
18	W.I.C.	8'6" x 11'9"	100 sq. ft	Yes
19	Hall	4'6" x 5'0"	22 sq. ft	Yes
20	Porch	7'7" x 6'2"	46 sq. ft	No
21	Kitchen	18'9" x 15'1"	284 sq. ft	Yes
22	Bedroom	14'0" x 11'10"	166 sq. ft	Yes

8120 Belmont Court, Thornbridge, North Richland Hills, Tarrant County, Texas, United States, 76182

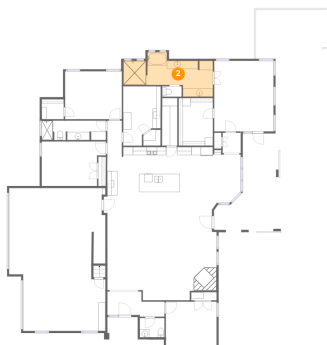
1 Floor 1 - Garage



Dimensions: 23'9" x 35'4"
Area: 839 sq. ft
Counted as living area: No

Heated: No
Finished: No
Enclosed: Yes
Contiguous: Yes
Permitted: Yes
Wet space: No
Addition: No
Conversion: No

2 Floor 1 - Primary Bath

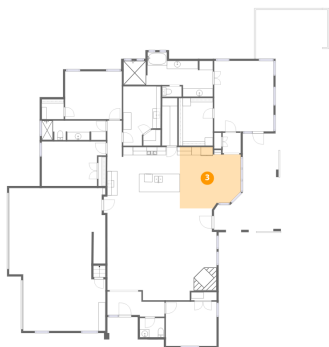


Dimensions: 22'1" x 8'11"
Area: 198 sq. ft
Counted as living area: Yes

Heated: Yes
Finished: Yes
Enclosed: Yes
Contiguous: Yes
Permitted: Yes
Wet space: Yes
Addition: No
Conversion: No

8120 Belmont Court, Thornbridge, North Richland Hills, Tarrant County, Texas, United States, 76182

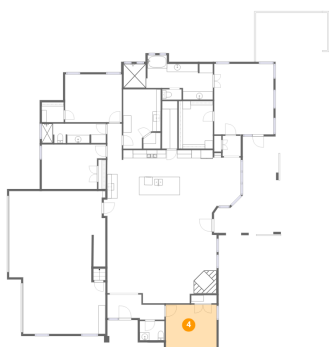
3 Floor 1 - Dining Area



Dimensions: 15'1" x 15'2"
Area: 228 sq. ft
Counted as living area: Yes

Heated: Yes
Finished: Yes
Enclosed: Yes
Contiguous: Yes
Permitted: Yes
Wet space: No
Addition: No
Conversion: No

4 Floor 1 - Office



Dimensions: 12'7" x 10'11"
Area: 137 sq. ft
Counted as living area: Yes

Heated: Yes
Finished: Yes
Enclosed: Yes
Contiguous: Yes
Permitted: Yes
Wet space: No
Addition: No
Conversion: No

5 Floor 1 - Pantry

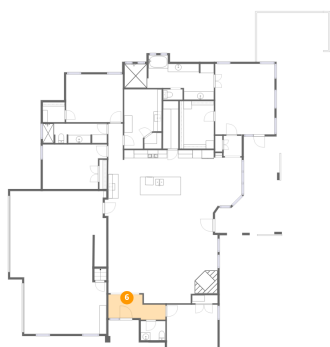


Dimensions: 3'9" x 11'9"
Area: 44 sq. ft
Counted as living area: Yes

Heated: Yes
Finished: Yes
Enclosed: Yes
Contiguous: Yes
Permitted: Yes
Wet space: No
Addition: No
Conversion: No

8120 Belmont Court, Thornbridge, North Richland Hills, Tarrant County, Texas, United States, 76182

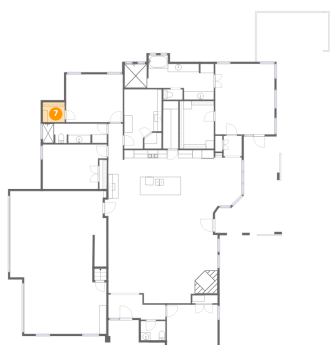
6 Floor 1 - Foyer



Dimensions: 14'1" x 6'3"
Area: 88 sq. ft
Counted as living area: Yes

Heated: Yes
Finished: Yes
Enclosed: Yes
Contiguous: Yes
Permitted: Yes
Wet space: No
Addition: No
Conversion: No

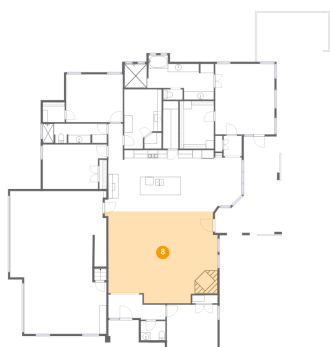
7 Floor 1 - W.I.C.



Dimensions: 5'5" x 4'11"
Area: 27 sq. ft
Counted as living area: Yes

Heated: Yes
Finished: Yes
Enclosed: Yes
Contiguous: Yes
Permitted: Yes
Wet space: No
Addition: No
Conversion: No

8 Floor 1 - Living Room

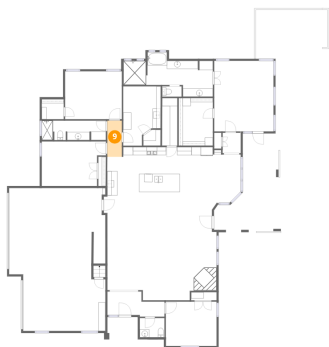


Dimensions: 27'2" x 22'9"
Area: 616 sq. ft
Counted as living area: Yes

Heated: Yes
Finished: Yes
Enclosed: Yes
Contiguous: Yes
Permitted: Yes
Wet space: No
Addition: No
Conversion: No

8120 Belmont Court, Thornbridge, North Richland Hills, Tarrant County, Texas, United States, 76182

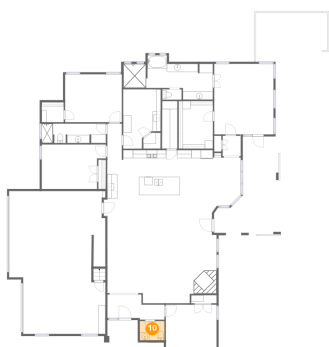
9 Floor 1 - Hall



Dimensions: 3'7" x 8'11"
Area: 32 sq. ft
Counted as living area: Yes

Heated: Yes
Finished: Yes
Enclosed: Yes
Contiguous: Yes
Permitted: Yes
Wet space: No
Addition: No
Conversion: No

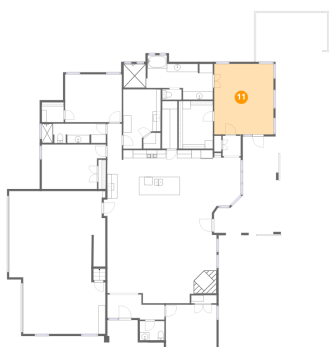
10 Floor 1 - Bath



Dimensions: 6'1" x 4'9"
Area: 29 sq. ft
Counted as living area: Yes

Heated: Yes
Finished: Yes
Enclosed: Yes
Contiguous: Yes
Permitted: Yes
Wet space: Yes
Addition: No
Conversion: No

11 Floor 1 - Primary Bedroom

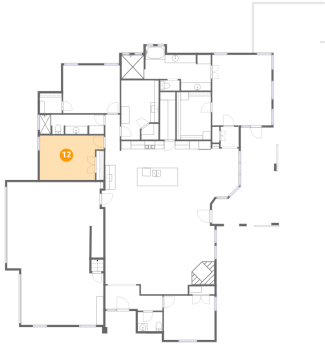


Dimensions: 14'8" x 17'5"
Area: 256 sq. ft
Counted as living area: Yes

Heated: Yes
Finished: Yes
Enclosed: Yes
Contiguous: Yes
Permitted: Yes
Wet space: No
Addition: No
Conversion: No

8120 Belmont Court, Thornbridge, North Richland Hills, Tarrant County, Texas, United States, 76182

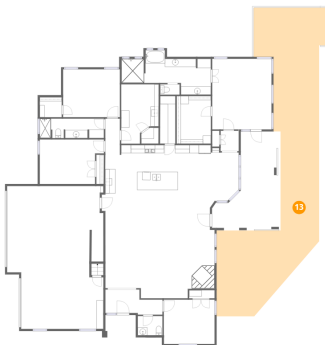
12 Floor 1 - Bedroom



Dimensions: 15'11" x 11'0"
Area: 175 sq. ft
Counted as living area: Yes

Heated: Yes
Finished: Yes
Enclosed: Yes
Contiguous: Yes
Permitted: Yes
Wet space: No
Addition: No
Conversion: No

13 Floor 1 - Patio



Dimensions: 25'4" x 76'3"
Area: 1934 sq. ft
Counted as living area: No

Heated: No
Finished: No
Enclosed: No
Contiguous: Yes
Permitted: Yes
Wet space: No
Addition: No
Conversion: No

14 Floor 1 - Bath

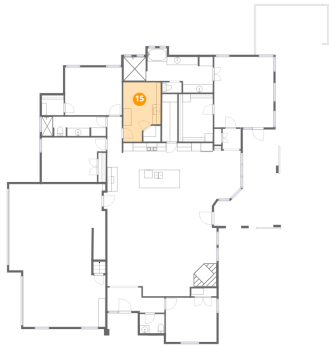


Dimensions: 15'11" x 4'10"
Area: 77 sq. ft
Counted as living area: Yes

Heated: Yes
Finished: Yes
Enclosed: Yes
Contiguous: Yes
Permitted: Yes
Wet space: Yes
Addition: No
Conversion: No

8120 Belmont Court, Thornbridge, North Richland Hills, Tarrant County, Texas, United States, 76182

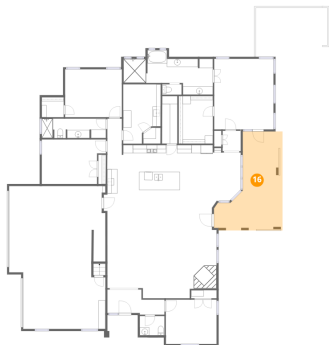
15 Floor 1 - Laundry



Dimensions: 9'4" x 14'8"
Area: 137 sq. ft
Counted as living area: Yes

Heated: Yes
Finished: Yes
Enclosed: Yes
Contiguous: Yes
Permitted: Yes
Wet space: No
Addition: No
Conversion: No

16 Floor 1 - Covered Patio



Dimensions: 16'11" x 24'5"
Area: 414 sq. ft
Counted as living area: No

Heated: No
Finished: No
Enclosed: No
Contiguous: Yes
Permitted: Yes
Wet space: No
Addition: No
Conversion: No

17 Floor 1 - Bath

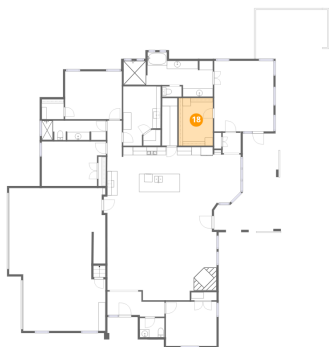


Dimensions: 4'10" x 2'7"
Area: 12 sq. ft
Counted as living area: Yes

Heated: Yes
Finished: Yes
Enclosed: Yes
Contiguous: Yes
Permitted: Yes
Wet space: No
Addition: No
Conversion: No

8120 Belmont Court, Thornbridge, North Richland Hills, Tarrant County, Texas, United States, 76182

18 Floor 1 - W.I.C.



Dimensions: 8'6" x 11'9"
Area: 100 sq. ft
Counted as living area: Yes

Heated: Yes
Finished: Yes
Enclosed: Yes
Contiguous: Yes
Permitted: Yes
Wet space: No
Addition: No
Conversion: No

19 Floor 1 - Hall



Dimensions: 4'6" x 5'0"
Area: 22 sq. ft
Counted as living area: Yes

Heated: Yes
Finished: Yes
Enclosed: Yes
Contiguous: Yes
Permitted: Yes
Wet space: No
Addition: No
Conversion: No

20 Floor 1 - Porch

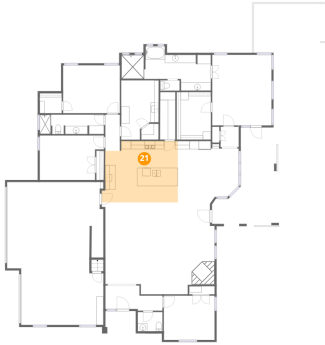


Dimensions: 7'7" x 6'2"
Area: 46 sq. ft
Counted as living area: No

Heated: No
Finished: No
Enclosed: No
Contiguous: Yes
Permitted: Yes
Wet space: No
Addition: No
Conversion: No

8120 Belmont Court, Thornbridge, North Richland Hills, Tarrant County, Texas, United States, 76182

21 Floor 1 - Kitchen



Dimensions: 18'9" x 15'1"
Area: 284 sq. ft
Counted as living area: Yes

Heated: Yes
Finished: Yes
Enclosed: Yes
Contiguous: Yes
Permitted: Yes
Wet space: No
Addition: No
Conversion: No

22 Floor 1 - Bedroom



Dimensions: 14'0" x 11'10"
Area: 166 sq. ft
Counted as living area: Yes

Heated: Yes
Finished: Yes
Enclosed: Yes
Contiguous: Yes
Permitted: Yes
Wet space: No
Addition: No
Conversion: No