

Home data report

346 Deer Ridge Drive, Harpers Ferry, Jefferson County, West Virginia, United States, 25425





Total Area: 2997 sq. ft
Below Ground: 667 sq. ft, 1st Floor: 1197 sq. ft, 2nd Floor: 1133 sq. ft
Excluded: Utility 69 sq. ft, Garage 441 sq. ft, Deck 360 sq. ft, Fireplace 12 sq. ft, Attic 63 sq. ft, Open to below 62 sq. ft, Walls: 241 sq. ft

Property summary

 **3** Floors

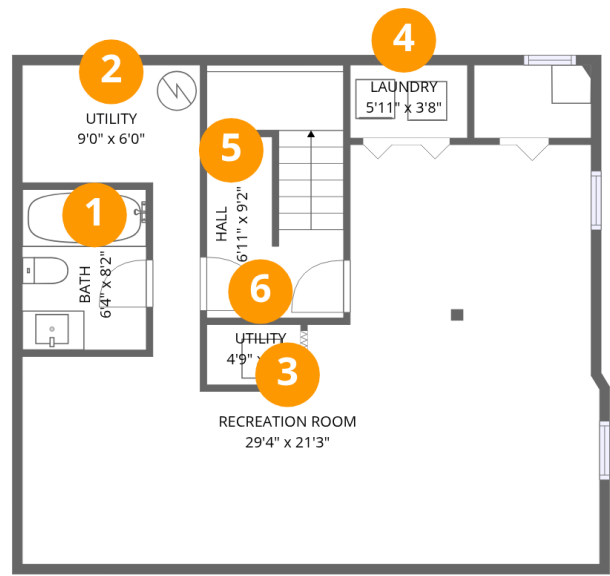
 **5** Bedrooms

 **4** Bathrooms

 **1** Garages

Home data report

346 Deer Ridge Drive, Harpers Ferry, Jefferson County, West Virginia, United States, 25425

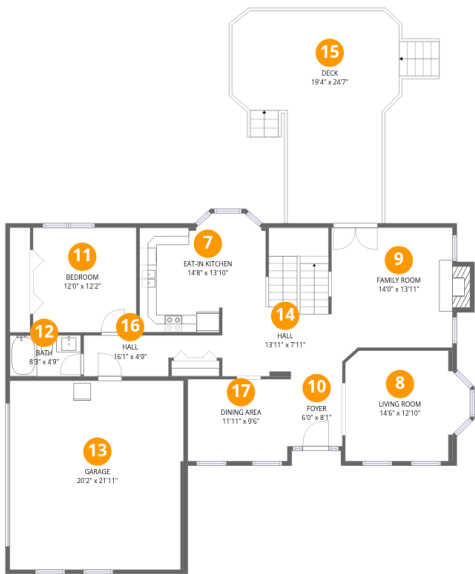


Room dimensions

Floor 1 Below grade Total:667sqft Excluded: 69sqft

#		Dimensions	sqft	Counted as living area
1	Bath	6'4" x 8'2"	51 sq. ft	Yes
2	Utility	9'0" x 6'0"	54 sq. ft	No
3	Recreation Room	29'4" x 21'3"	455 sq. ft	Yes
4	Laundry	5'11" x 3'8"	22 sq. ft	Yes
5	Hall	6'11" x 9'2"	86 sq. ft	Yes
6	Utility	4'9" x 3'1"	15 sq. ft	No

346 Deer Ridge Drive, Harpers Ferry, Jefferson County, West Virginia, United States, 25425

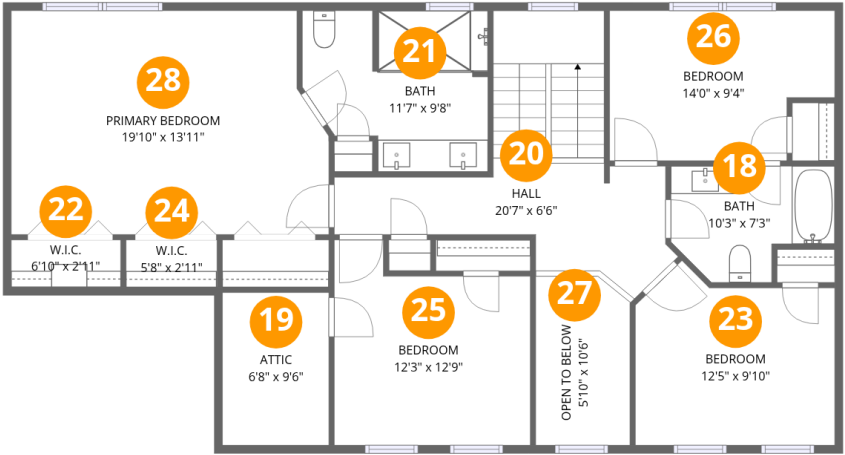


Room dimensions

Floor 2 Total:1197sqft Excluded: 813sqft

#		Dimensions	sqft	Counted as living area
7	Eat-in Kitchen	14'8" x 13'10"	173 sq. ft	Yes
8	Living Room	14'6" x 12'10"	169 sq. ft	Yes
9	Family Room	14'0" x 13'11"	199 sq. ft	Yes
10	Foyer	6'0" x 8'1"	48 sq. ft	Yes
11	Bedroom	12'0" x 12'2"	145 sq. ft	Yes
12	Bath	8'3" x 4'9"	39 sq. ft	Yes
13	Garage	20'2" x 21'11"	441 sq. ft	No
14	Hall	13'11" x 7'11"	177 sq. ft	Yes
15	Deck	19'4" x 24'7"	360 sq. ft	No
16	Hall	16'1" x 4'9"	63 sq. ft	Yes
17	Dining Area	11'11" x 9'6"	113 sq. ft	Yes

346 Deer Ridge Drive, Harpers Ferry, Jefferson County, West Virginia, United States, 25425



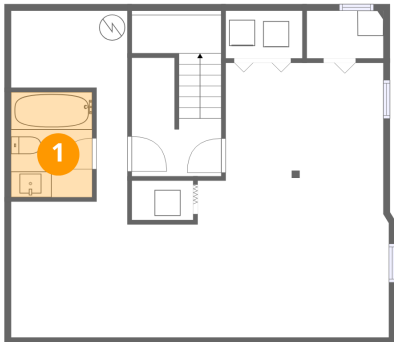
Room dimensions

Floor 3 Total:1133sqft Excluded: 125sqft

#		Dimensions	sqft	Counted as living area
18	Bath	10'3" x 7'3"	61 sq. ft	Yes
19	Attic	6'8" x 9'6"	63 sq. ft	No
20	Hall	20'7" x 6'6"	170 sq. ft	Yes
21	Bath	11'7" x 9'8"	101 sq. ft	Yes
22	W.I.C.	6'10" x 2'11"	20 sq. ft	Yes
23	Bedroom	12'5" x 9'10"	124 sq. ft	Yes
24	W.I.C.	5'8" x 2'11"	17 sq. ft	Yes
25	Bedroom	12'3" x 12'9"	135 sq. ft	Yes
26	Bedroom	14'0" x 9'4"	119 sq. ft	Yes
27	Open To Below	5'10" x 10'6"	62 sq. ft	No
28	Primary Bedroom	19'10" x 13'11"	263 sq. ft	Yes

346 Deer Ridge Drive, Harpers Ferry, Jefferson County, West Virginia, United States, 25425

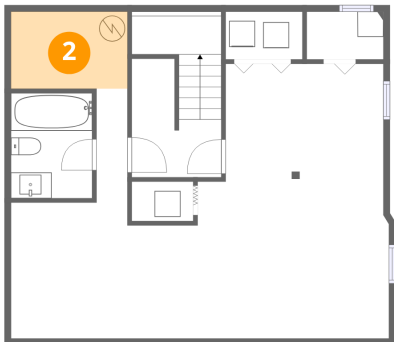
1 Floor 1 - Bath



Dimensions: 6'4" x 8'2"
Area: 51 sq. ft
Counted as living area: Yes

Heated: Yes
Finished: Yes
Enclosed: Yes
Contiguous: Yes
Permitted: Yes
Wet space: Yes
Addition: No
Conversion: No

2 Floor 1 - Utility



Dimensions: 9'0" x 6'0"
Area: 54 sq. ft
Counted as living area: No

Heated: Yes
Finished: No
Enclosed: Yes
Contiguous: Yes
Permitted: Yes
Wet space: No
Addition: No
Conversion: No

Home data report

346 Deer Ridge Drive, Harpers Ferry, Jefferson County, West Virginia, United States, 25425

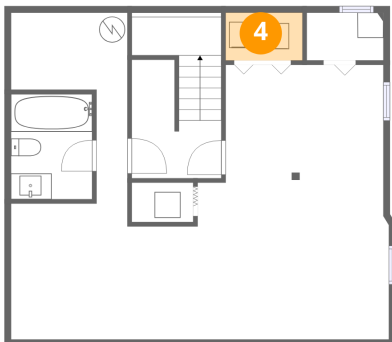
3 Floor 1 - Recreation Room



Dimensions: 29'4" x 21'3"
Area: 455 sq. ft
Counted as living area: Yes

Heated: Yes
Finished: Yes
Enclosed: Yes
Contiguous: Yes
Permitted: Yes
Wet space: No
Addition: No
Conversion: No

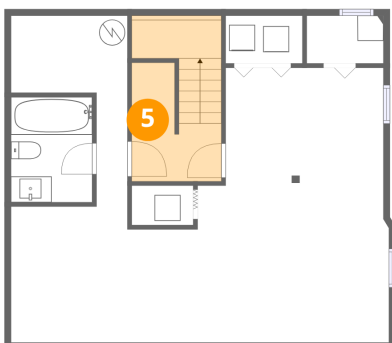
4 Floor 1 - Laundry



Dimensions: 5'11" x 3'8"
Area: 22 sq. ft
Counted as living area: Yes

Heated: Yes
Finished: Yes
Enclosed: Yes
Contiguous: Yes
Permitted: Yes
Wet space: No
Addition: No
Conversion: No

5 Floor 1 - Hall



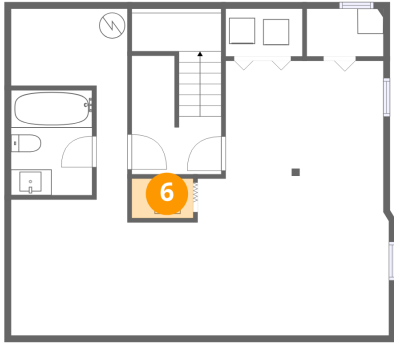
Dimensions: 6'11" x 9'2"
Area: 86 sq. ft
Counted as living area: Yes

Heated: Yes
Finished: Yes
Enclosed: Yes
Contiguous: Yes
Permitted: Yes
Wet space: No
Addition: No
Conversion: No

Home data report

346 Deer Ridge Drive, Harpers Ferry, Jefferson County, West Virginia, United States, 25425

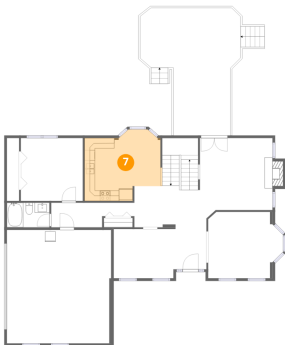
6 Floor 1 - Utility



Dimensions: 4'9" x 3'1"
Area: 15 sq. ft
Counted as living area: No

Heated: Yes
Finished: No
Enclosed: Yes
Contiguous: Yes
Permitted: Yes
Wet space: No
Addition: No
Conversion: No

7 Floor 2 - Eat-in Kitchen



Dimensions: 14'8" x 13'10"
Area: 173 sq. ft
Counted as living area: Yes

Heated: Yes
Finished: Yes
Enclosed: Yes
Contiguous: Yes
Permitted: Yes
Wet space: No
Addition: No
Conversion: No

8 Floor 2 - Living Room



Dimensions: 14'6" x 12'10"
Area: 169 sq. ft
Counted as living area: Yes

Heated: Yes
Finished: Yes
Enclosed: Yes
Contiguous: Yes
Permitted: Yes
Wet space: No
Addition: No
Conversion: No

346 Deer Ridge Drive, Harpers Ferry, Jefferson County, West Virginia, United States, 25425

9 Floor 2 - Family Room



Dimensions: 14'0" x 13'11"
Area: 199 sq. ft
Counted as living area: Yes

Heated: Yes
Finished: Yes
Enclosed: Yes
Contiguous: Yes
Permitted: Yes
Wet space: No
Addition: No
Conversion: No

10 Floor 2 - Foyer



Dimensions: 6'0" x 8'1"
Area: 48 sq. ft
Counted as living area: Yes

Heated: Yes
Finished: Yes
Enclosed: Yes
Contiguous: Yes
Permitted: Yes
Wet space: No
Addition: No
Conversion: No

11 Floor 2 - Bedroom



Dimensions: 12'0" x 12'2"
Area: 145 sq. ft
Counted as living area: Yes

Heated: Yes
Finished: Yes
Enclosed: Yes
Contiguous: Yes
Permitted: Yes
Wet space: No
Addition: No
Conversion: No

346 Deer Ridge Drive, Harpers Ferry, Jefferson County, West Virginia, United States, 25425

12 Floor 2 - Bath



Dimensions: 8'3" x 4'9"
Area: 39 sq. ft
Counted as living area: Yes

Heated: Yes
Finished: Yes
Enclosed: Yes
Contiguous: Yes
Permitted: Yes
Wet space: Yes
Addition: No
Conversion: No

13 Floor 2 - Garage



Dimensions: 20'2" x 21'11"
Area: 441 sq. ft
Counted as living area: No

Heated: No
Finished: No
Enclosed: Yes
Contiguous: Yes
Permitted: Yes
Wet space: No
Addition: No
Conversion: No

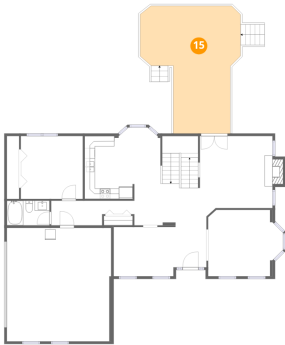
14 Floor 2 - Hall



Dimensions: 13'11" x 7'11"
Area: 177 sq. ft
Counted as living area: Yes

Heated: Yes
Finished: Yes
Enclosed: Yes
Contiguous: Yes
Permitted: Yes
Wet space: No
Addition: No
Conversion: No

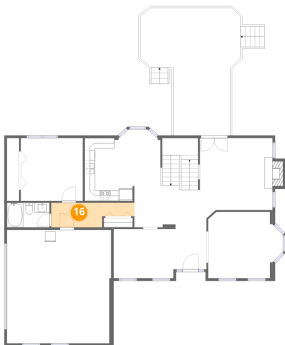
15 Floor 2 - Deck



Dimensions: 19'4" x 24'7"
Area: 360 sq. ft
Counted as living area: No

Heated: No
Finished: No
Enclosed: No
Contiguous: Yes
Permitted: Yes
Wet space: No
Addition: No
Conversion: No

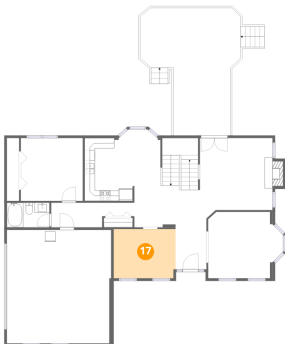
16 Floor 2 - Hall



Dimensions: 16'1" x 4'9"
Area: 63 sq. ft
Counted as living area: Yes

Heated: Yes
Finished: Yes
Enclosed: Yes
Contiguous: Yes
Permitted: Yes
Wet space: No
Addition: No
Conversion: No

17 Floor 2 - Dining Area

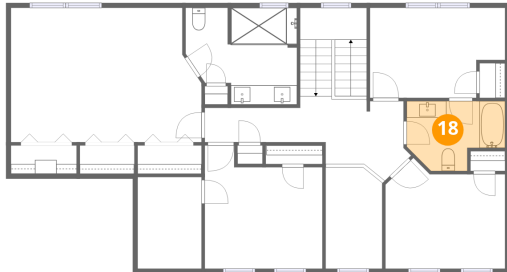


Dimensions: 11'11" x 9'6"
Area: 113 sq. ft
Counted as living area: Yes

Heated: Yes
Finished: Yes
Enclosed: Yes
Contiguous: Yes
Permitted: Yes
Wet space: No
Addition: No
Conversion: No

346 Deer Ridge Drive, Harpers Ferry, Jefferson County, West Virginia, United States, 25425

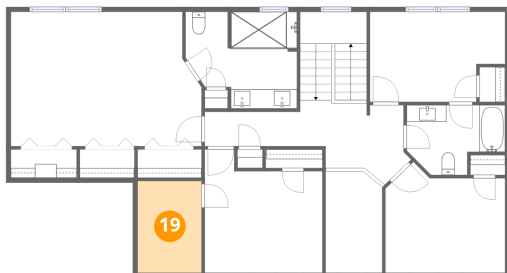
18 Floor 3 - Bath



Dimensions: 10'3" x 7'3"
Area: 61 sq. ft
Counted as living area: Yes

Heated: Yes
Finished: Yes
Enclosed: Yes
Contiguous: Yes
Permitted: Yes
Wet space: Yes
Addition: No
Conversion: No

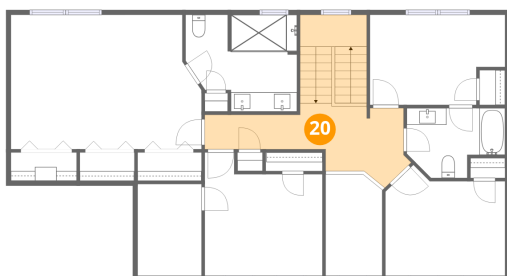
19 Floor 3 - Attic



Dimensions: 6'8" x 9'6"
Area: 63 sq. ft
Counted as living area: No

Heated: No
Finished: No
Enclosed: Yes
Contiguous: Yes
Permitted: Yes
Wet space: No
Addition: No
Conversion: No

20 Floor 3 - Hall



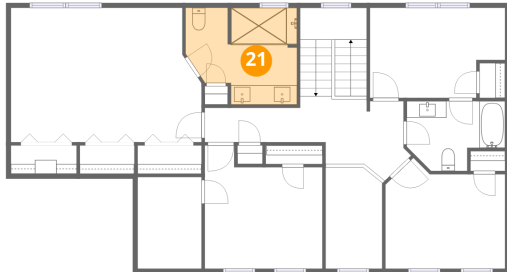
Dimensions: 20'7" x 6'6"
Area: 170 sq. ft
Counted as living area: Yes

Heated: Yes
Finished: Yes
Enclosed: Yes
Contiguous: Yes
Permitted: Yes
Wet space: No
Addition: No
Conversion: No

Home data report

346 Deer Ridge Drive, Harpers Ferry, Jefferson County, West Virginia, United States, 25425

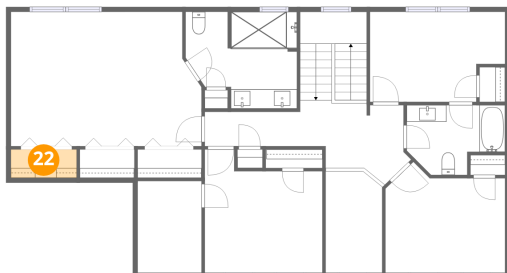
21 Floor 3 - Bath



Dimensions: 11'7" x 9'8"
Area: 101 sq. ft
Counted as living area: Yes

Heated: Yes
Finished: Yes
Enclosed: Yes
Contiguous: Yes
Permitted: Yes
Wet space: Yes
Addition: No
Conversion: No

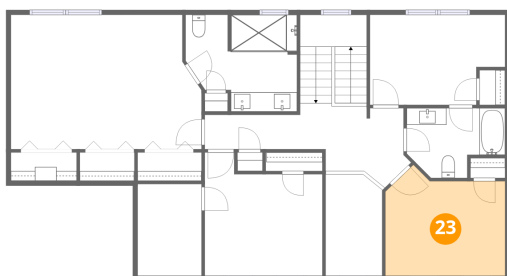
22 Floor 3 - W.I.C.



Dimensions: 6'10" x 2'11"
Area: 20 sq. ft
Counted as living area: Yes

Heated: Yes
Finished: Yes
Enclosed: Yes
Contiguous: Yes
Permitted: Yes
Wet space: No
Addition: No
Conversion: No

23 Floor 3 - Bedroom



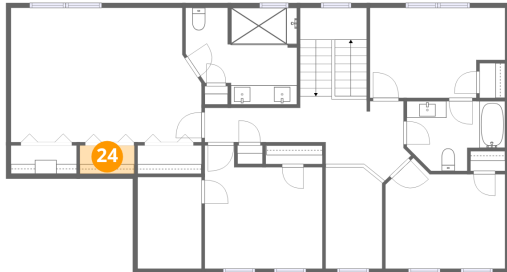
Dimensions: 12'5" x 9'10"
Area: 124 sq. ft
Counted as living area: Yes

Heated: Yes
Finished: Yes
Enclosed: Yes
Contiguous: Yes
Permitted: Yes
Wet space: No
Addition: No
Conversion: No

Home data report

346 Deer Ridge Drive, Harpers Ferry, Jefferson County, West Virginia, United States, 25425

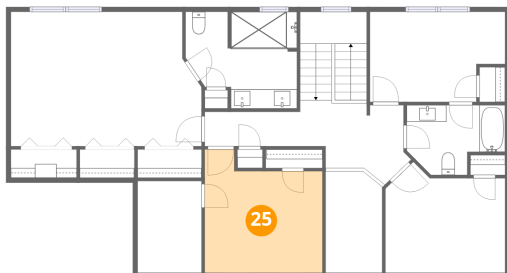
24 Floor 3 - W.I.C.



Dimensions: 5'8" x 2'11"
Area: 17 sq. ft
Counted as living area: Yes

Heated: Yes
Finished: Yes
Enclosed: Yes
Contiguous: Yes
Permitted: Yes
Wet space: No
Addition: No
Conversion: No

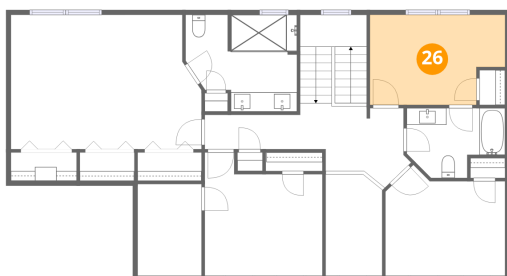
25 Floor 3 - Bedroom



Dimensions: 12'3" x 12'9"
Area: 135 sq. ft
Counted as living area: Yes

Heated: Yes
Finished: Yes
Enclosed: Yes
Contiguous: Yes
Permitted: Yes
Wet space: No
Addition: No
Conversion: No

26 Floor 3 - Bedroom

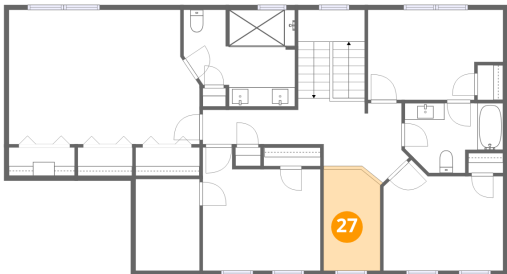


Dimensions: 14'0" x 9'4"
Area: 119 sq. ft
Counted as living area: Yes

Heated: Yes
Finished: Yes
Enclosed: Yes
Contiguous: Yes
Permitted: Yes
Wet space: No
Addition: No
Conversion: No

346 Deer Ridge Drive, Harpers Ferry, Jefferson County, West Virginia, United States, 25425

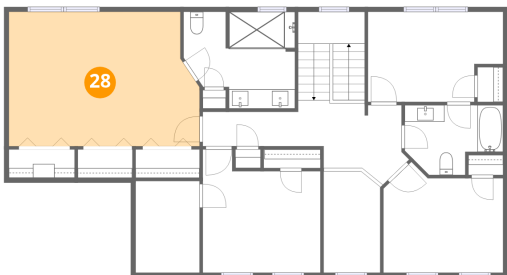
27 Floor 3 - Open To Below



Dimensions: 5'10" x 10'6"
Area: 62 sq. ft
Counted as living area: No

Heated: No
Finished: No
Enclosed: No
Contiguous: Yes
Permitted: No
Wet space: No
Addition: No
Conversion: No

28 Floor 3 - Primary Bedroom



Dimensions: 19'10" x 13'11"
Area: 263 sq. ft
Counted as living area: Yes

Heated: Yes
Finished: Yes
Enclosed: Yes
Contiguous: Yes
Permitted: Yes
Wet space: No
Addition: No
Conversion: No