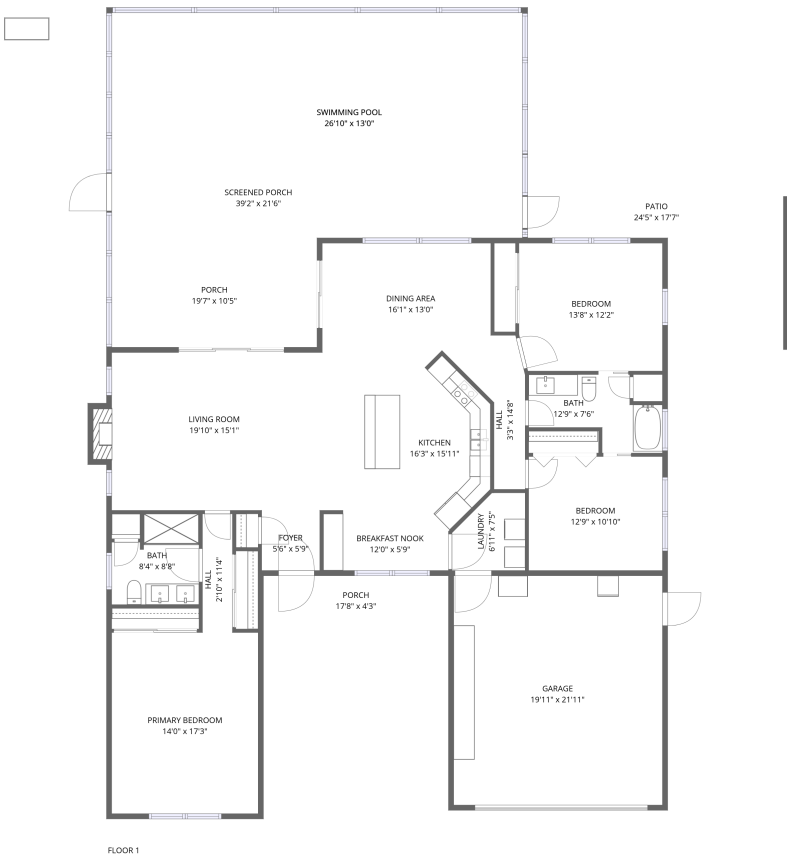


Home data report

7814 Bahama Avenue, Jasmine Estates, Port Richey, Pasco County, Florida, United States, 34668



Total Area: 1757 sq. ft

Floor 1: 1757 sq. ft

Excluded: Garage 435 sq. ft, Porch 278 sq. ft, Screened porch 492 sq. ft, Patio 264 sq. ft, Fireplace 10 sq. ft, Walls: 193 sq. ft

Property summary

1 Floors

3 Bedrooms

2 Bathrooms

1 Garages

**7814 Bahama Avenue, Jasmine Estates, Port Richey, Pasco
County, Florida, United States, 34668**



Total:1757sqft Excluded: 1479sqft

Scan captured on Mon, 03 Nov 2025 21:42:54 GMT

Home data report

7814 Bahama Avenue, Jasmine Estates, Port Richey, Pasco County, Florida, United States, 34668

#		Dimensions	sqft	Counted as living area
12	Screened Porch	39'2" x 21'6"	841 sq. ft	No
13	Hall	2'10" x 11'4"	32 sq. ft	Yes
14	Garage	19'11" x 21'11"	435 sq. ft	No
15	Bath	12'9" x 7'6"	69 sq. ft	Yes
16	Porch	17'8" x 4'3"	74 sq. ft	No
17	Bedroom	12'9" x 10'10"	139 sq. ft	Yes
18	Kitchen	16'3" x 15'11"	236 sq. ft	Yes
19	Bedroom	13'8" x 12'2"	165 sq. ft	Yes
20	Laundry	6'11" x 7'5"	44 sq. ft	Yes

7814 Bahama Avenue, Jasmine Estates, Port Richey, Pasco
County, Florida, United States, 34668

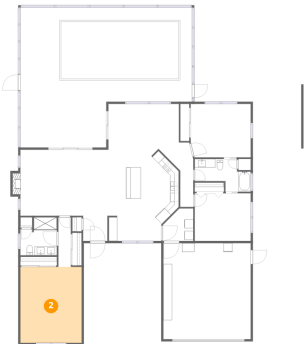
1 Floor 1 - Living Room



Dimensions: 19'10" x 15'1"
Area: 307 sq. ft
Counted as living area: Yes

Heated: Yes
Finished: Yes
Enclosed: Yes
Contiguous: Yes
Permitted: Yes
Wet space: No
Addition: No
Conversion: No

2 Floor 1 - Primary Bedroom



Dimensions: 14'0" x 17'3"
Area: 241 sq. ft
Counted as living area: Yes

Heated: Yes
Finished: Yes
Enclosed: Yes
Contiguous: Yes
Permitted: Yes
Wet space: No
Addition: No
Conversion: No

7814 Bahama Avenue, Jasmine Estates, Port Richey, Pasco
County, Florida, United States, 34668

3 Floor 1 - Hall



Dimensions: 3'3" x 14'8"
Area: 44 sq. ft
Counted as living area: Yes

Heated: Yes
Finished: Yes
Enclosed: Yes
Contiguous: Yes
Permitted: Yes
Wet space: No
Addition: No
Conversion: No

4 Floor 1 - Dining Area



Dimensions: 16'1" x 13'0"
Area: 175 sq. ft
Counted as living area: Yes

Heated: Yes
Finished: Yes
Enclosed: Yes
Contiguous: Yes
Permitted: Yes
Wet space: No
Addition: No
Conversion: No

5 Floor 1 - Breakfast Nook



Dimensions: 12'0" x 5'9"
Area: 66 sq. ft
Counted as living area: Yes

Heated: Yes
Finished: Yes
Enclosed: Yes
Contiguous: Yes
Permitted: Yes
Wet space: No
Addition: No
Conversion: No

7814 Bahama Avenue, Jasmine Estates, Port Richey, Pasco
County, Florida, United States, 34668

6 Floor 1 - Porch



Dimensions: 19'7" x 10'5"
Area: 204 sq. ft
Counted as living area: No

Heated: No
Finished: No
Enclosed: No
Contiguous: Yes
Permitted: Yes
Wet space: No
Addition: No
Conversion: No

7 Floor 1 - Foyer



Dimensions: 5'6" x 5'9"
Area: 32 sq. ft
Counted as living area: Yes

Heated: Yes
Finished: Yes
Enclosed: Yes
Contiguous: Yes
Permitted: Yes
Wet space: No
Addition: No
Conversion: No

8 Floor 1 - Swimming Pool



Dimensions: 26'10" x 13'0"
Area: 349 sq. ft
Counted as living area: No

Heated: No
Finished: No
Enclosed: No
Contiguous: Yes
Permitted: No
Wet space: No
Addition: No
Conversion: No

7814 Bahama Avenue, Jasmine Estates, Port Richey, Pasco
County, Florida, United States, 34668

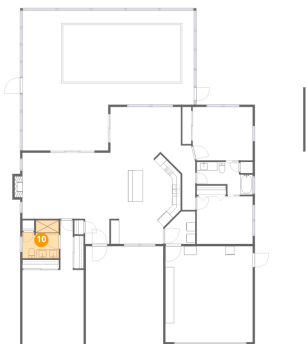
9 Floor 1 - Swimming Pool



Dimensions: 26'10" x 13'0"
Area: 349 sq. ft
Counted as living area: No

Heated: No
Finished: No
Enclosed: No
Contiguous: Yes
Permitted: No
Wet space: No
Addition: No
Conversion: No

10 Floor 1 - Bath



Dimensions: 8'4" x 8'8"
Area: 64 sq. ft
Counted as living area: Yes

Heated: Yes
Finished: Yes
Enclosed: Yes
Contiguous: Yes
Permitted: Yes
Wet space: Yes
Addition: No
Conversion: No

11 Floor 1 - Patio



Dimensions: 24'5" x 17'7"
Area: 264 sq. ft
Counted as living area: No

Heated: No
Finished: No
Enclosed: No
Contiguous: Yes
Permitted: Yes
Wet space: No
Addition: No
Conversion: No

7814 Bahama Avenue, Jasmine Estates, Port Richey, Pasco
County, Florida, United States, 34668

12 Floor 1 - Screened Porch



Dimensions: 39'2" x 21'6"
Area: 841 sq. ft
Counted as living area: No

Heated: No
Finished: No
Enclosed: No
Contiguous: Yes
Permitted: Yes
Wet space: No
Addition: No
Conversion: No

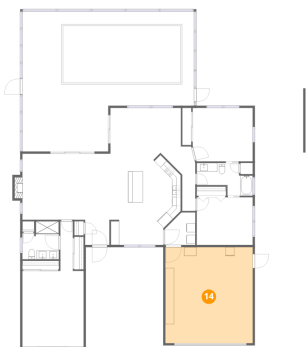
13 Floor 1 - Hall



Dimensions: 2'10" x 11'4"
Area: 32 sq. ft
Counted as living area: Yes

Heated: Yes
Finished: Yes
Enclosed: Yes
Contiguous: Yes
Permitted: Yes
Wet space: No
Addition: No
Conversion: No

14 Floor 1 - Garage

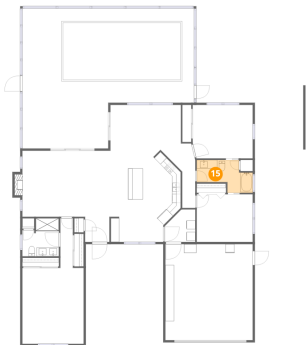


Dimensions: 19'11" x 21'11"
Area: 435 sq. ft
Counted as living area: No

Heated: No
Finished: No
Enclosed: Yes
Contiguous: Yes
Permitted: Yes
Wet space: No
Addition: No
Conversion: No

7814 Bahama Avenue, Jasmine Estates, Port Richey, Pasco
County, Florida, United States, 34668

15 Floor 1 - Bath



Dimensions: 12'9" x 7'6"
Area: 69 sq. ft
Counted as living area: Yes

Heated: Yes
Finished: Yes
Enclosed: Yes
Contiguous: Yes
Permitted: Yes
Wet space: Yes
Addition: No
Conversion: No

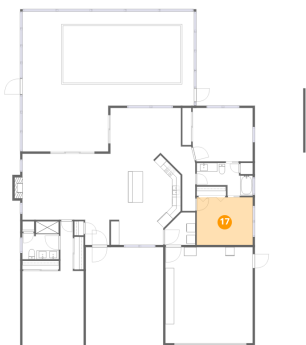
16 Floor 1 - Porch



Dimensions: 17'8" x 4'3"
Area: 74 sq. ft
Counted as living area: No

Heated: No
Finished: No
Enclosed: No
Contiguous: Yes
Permitted: Yes
Wet space: No
Addition: No
Conversion: No

17 Floor 1 - Bedroom

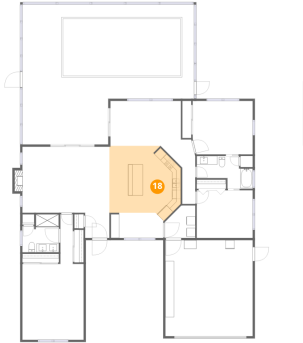


Dimensions: 12'9" x 10'10"
Area: 139 sq. ft
Counted as living area: Yes

Heated: Yes
Finished: Yes
Enclosed: Yes
Contiguous: Yes
Permitted: Yes
Wet space: No
Addition: No
Conversion: No

7814 Bahama Avenue, Jasmine Estates, Port Richey, Pasco
County, Florida, United States, 34668

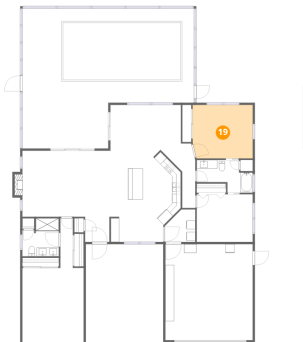
18 Floor 1 - Kitchen



Dimensions: 16'3" x 15'11"
Area: 236 sq. ft
Counted as living area: Yes

Heated: Yes
Finished: Yes
Enclosed: Yes
Contiguous: Yes
Permitted: Yes
Wet space: No
Addition: No
Conversion: No

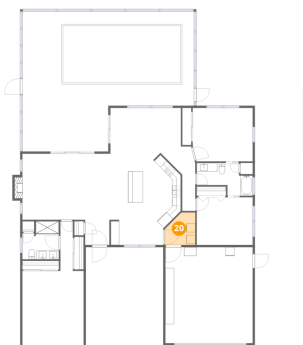
19 Floor 1 - Bedroom



Dimensions: 13'8" x 12'2"
Area: 165 sq. ft
Counted as living area: Yes

Heated: Yes
Finished: Yes
Enclosed: Yes
Contiguous: Yes
Permitted: Yes
Wet space: No
Addition: No
Conversion: No

20 Floor 1 - Laundry



Dimensions: 6'11" x 7'5"
Area: 44 sq. ft
Counted as living area: Yes

Heated: Yes
Finished: Yes
Enclosed: Yes
Contiguous: Yes
Permitted: Yes
Wet space: No
Addition: No
Conversion: No