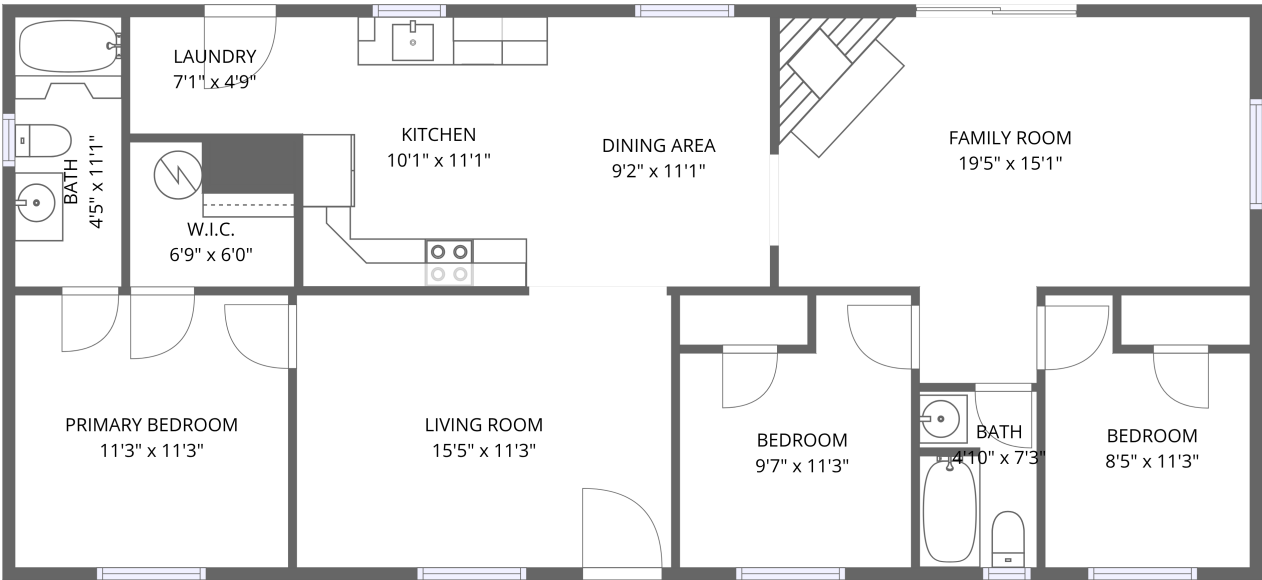


Home report

1030 Church Street Northeast, Cambria, Christiansburg,
Montgomery County, Virginia, United States, 24073



FLOOR 1

Total Area: 1154 sq. ft

Floor 1: 1154 sq. ft

Excluded: Walls: 74 sq. ft

Property summary



1 Floors



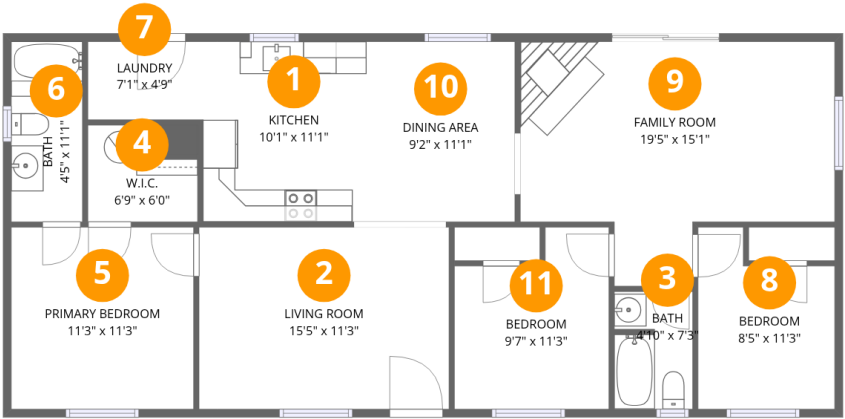
3 Bedrooms



2 Bathrooms

Home report

1030 Church Street Northeast, Cambria, Christiansburg,
Montgomery County, Virginia, United States, 24073



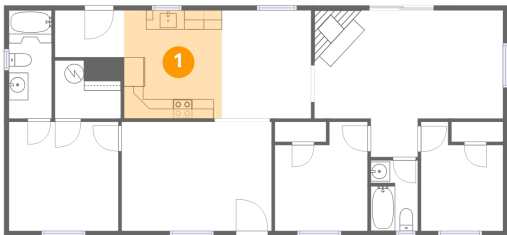
Room dimensions

Floor 1 Total:1154sqft Excluded: 0sqft

#		Max Dimensions	sqft	Included
1	Kitchen	10'1" x 11'1"	112 sq. ft	Yes
2	Living Room	15'5" x 11'3"	173 sq. ft	Yes
3	Bath	4'10" x 7'3"	34 sq. ft	Yes
4	W.I.C.	6'9" x 6'0"	32 sq. ft	Yes
5	Primary Bedroom	11'3" x 11'3"	126 sq. ft	Yes
6	Bath	4'5" x 11'1"	49 sq. ft	Yes
7	Laundry	7'1" x 4'9"	34 sq. ft	Yes
8	Bedroom	8'5" x 11'3"	81 sq. ft	Yes
9	Family Room	19'5" x 15'1"	235 sq. ft	Yes
10	Dining Area	9'2" x 11'1"	102 sq. ft	Yes
11	Bedroom	9'7" x 11'3"	94 sq. ft	Yes

1030 Church Street Northeast, Cambria, Christiansburg,
Montgomery County, Virginia, United States, 24073

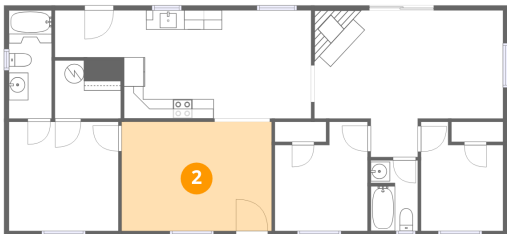
1 Floor 1 - Kitchen



Max Dimensions: 10'1" x 11'1"
Calculated Area: 112 sq. ft
Included: Yes

Heated: Yes
Finished: Yes
Enclosed: Yes
Contiguous: Yes
Permitted: Yes
Wet space: No
Addition: No
Conversion: No

2 Floor 1 - Living Room



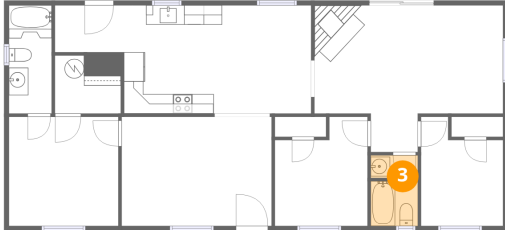
Max Dimensions: 15'5" x 11'3"
Calculated Area: 173 sq. ft
Included: Yes

Heated: Yes
Finished: Yes
Enclosed: Yes
Contiguous: Yes
Permitted: Yes
Wet space: No
Addition: No
Conversion: No

Home report

1030 Church Street Northeast, Cambria, Christiansburg,
Montgomery County, Virginia, United States, 24073

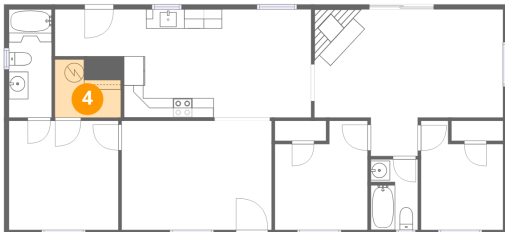
3 Floor 1 - Bath



Max Dimensions: 4'10" x 7'3"
Calculated Area: 34 sq. ft
Included: Yes

Heated: Yes
Finished: Yes
Enclosed: Yes
Contiguous: Yes
Permitted: Yes
Wet space: Yes
Addition: No
Conversion: No

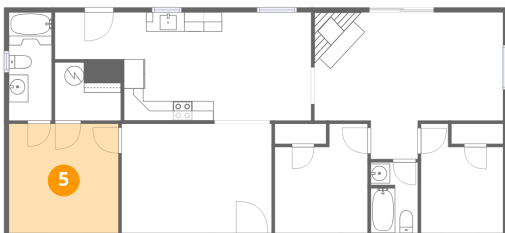
4 Floor 1 - W.I.C.



Max Dimensions: 6'9" x 6'0"
Calculated Area: 32 sq. ft
Included: Yes

Heated: Yes
Finished: Yes
Enclosed: Yes
Contiguous: Yes
Permitted: Yes
Wet space: No
Addition: No
Conversion: No

5 Floor 1 - Primary Bedroom

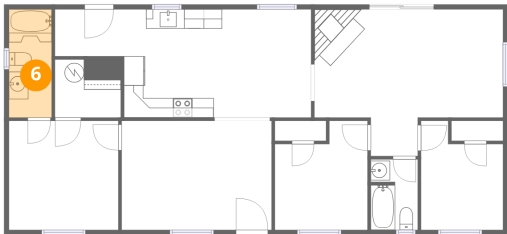


Max Dimensions: 11'3" x 11'3"
Calculated Area: 126 sq. ft
Included: Yes

Heated: Yes
Finished: Yes
Enclosed: Yes
Contiguous: Yes
Permitted: Yes
Wet space: No
Addition: No
Conversion: No

1030 Church Street Northeast, Cambria, Christiansburg,
Montgomery County, Virginia, United States, 24073

6 Floor 1 - Bath



Max Dimensions: 4'5" x 11'1"
Calculated Area: 49 sq. ft
Included: Yes

Heated: Yes
Finished: Yes
Enclosed: Yes
Contiguous: Yes
Permitted: Yes
Wet space: Yes
Addition: No
Conversion: No

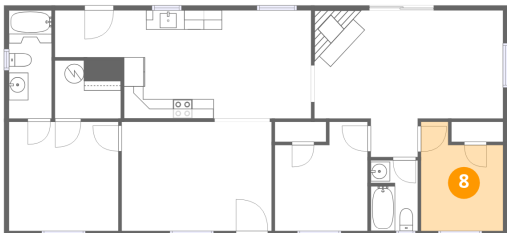
7 Floor 1 - Laundry



Max Dimensions: 7'1" x 4'9"
Calculated Area: 34 sq. ft
Included: Yes

Heated: Yes
Finished: Yes
Enclosed: Yes
Contiguous: Yes
Permitted: Yes
Wet space: No
Addition: No
Conversion: No

8 Floor 1 - Bedroom

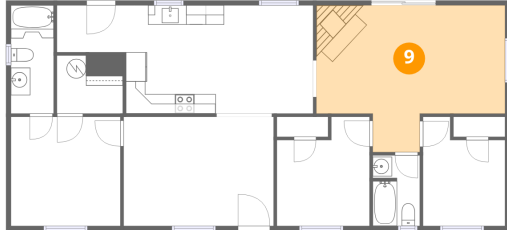


Max Dimensions: 8'5" x 11'3"
Calculated Area: 81 sq. ft
Included: Yes

Heated: Yes
Finished: Yes
Enclosed: Yes
Contiguous: Yes
Permitted: Yes
Wet space: No
Addition: No
Conversion: No

1030 Church Street Northeast, Cambria, Christiansburg,
Montgomery County, Virginia, United States, 24073

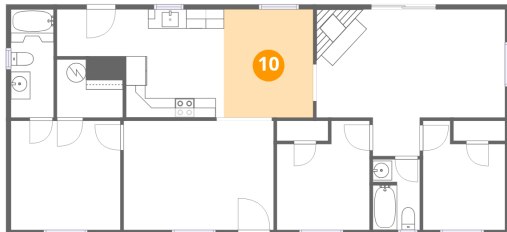
9 Floor 1 - Family Room



Max Dimensions: 19'5" x 15'1"
Calculated Area: 235 sq. ft
Included: Yes

Heated: Yes
Finished: Yes
Enclosed: Yes
Contiguous: Yes
Permitted: Yes
Wet space: No
Addition: No
Conversion: No

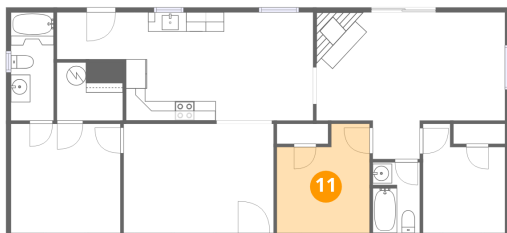
10 Floor 1 - Dining Area



Max Dimensions: 9'2" x 11'1"
Calculated Area: 102 sq. ft
Included: Yes

Heated: Yes
Finished: Yes
Enclosed: Yes
Contiguous: Yes
Permitted: Yes
Wet space: No
Addition: No
Conversion: No

11 Floor 1 - Bedroom



Max Dimensions: 9'7" x 11'3"
Calculated Area: 94 sq. ft
Included: Yes

Heated: Yes
Finished: Yes
Enclosed: Yes
Contiguous: Yes
Permitted: Yes
Wet space: No
Addition: No
Conversion: No