

Home data report

1146 Grenoble Crescent, Orléans North West, Orléans, Ontario,
Canada, K1C 2C6



Total Area: 1461 sq. ft
1st Floor: 404 sq. ft, 2nd Floor: 509 sq. ft, 3rd Floor: 548 sq. ft
Excluded: Walls: 143 sq. ft

Property summary

 **3** Floors

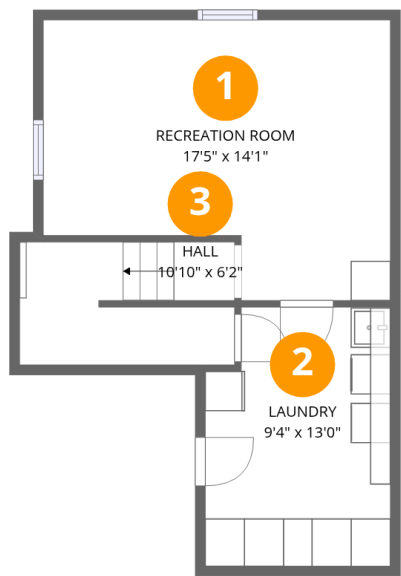
 **3** Bedrooms

 **1** Bathrooms

 **1** Half baths

Home data report

1146 Grenoble Crescent, Orléans North West, Orléans, Ontario,
Canada, K1C 2C6



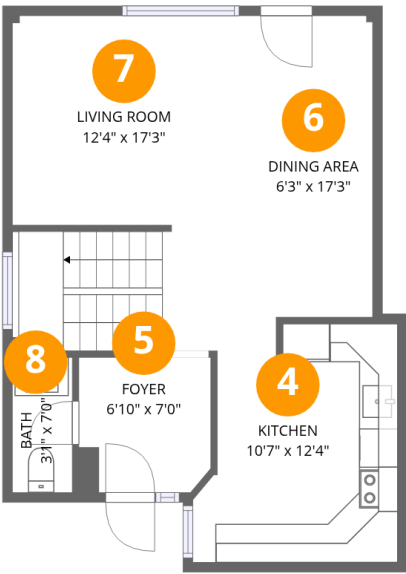
Room dimensions

Floor 1 Total:404sqft Excluded: 0sqft

#		Dimensions	sqft	Counted as living area
1	Recreation Room	17'5" x 14'1"	213 sq. ft	Yes
2	Laundry	9'4" x 13'0"	115 sq. ft	Yes
3	Hall	10'10" x 6'2"	64 sq. ft	Yes

Home data report

1146 Grenoble Crescent, Orléans North West, Orléans, Ontario,
Canada, K1C 2C6



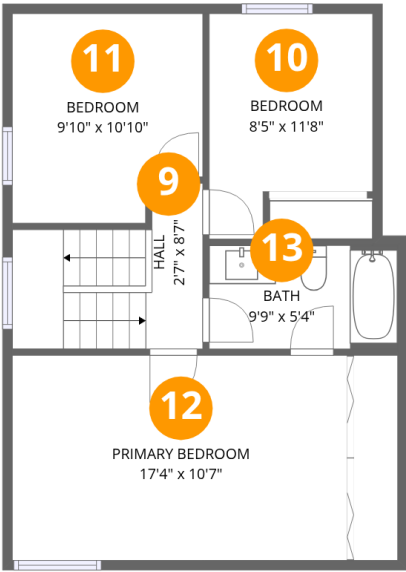
Room dimensions

Floor 2 Total:509sqft Excluded: 0sqft

#		Dimensions	sqft	Counted as living area
4	Kitchen	10'7" x 12'4"	115 sq. ft	Yes
5	Foyer	6'10" x 7'0"	47 sq. ft	Yes
6	Dining Area	6'3" x 17'3"	100 sq. ft	Yes
7	Living Room	12'4" x 17'3"	211 sq. ft	Yes
8	Bath	3'1" x 7'0"	22 sq. ft	Yes

Home data report

1146 Grenoble Crescent, Orléans North West, Orléans, Ontario,
Canada, K1C 2C6

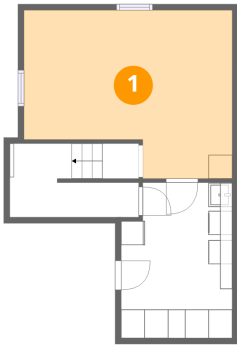


Room dimensions

Floor 3 Total:548sqft Excluded: 0sqft

#		Dimensions	sqft	Counted as living area
9	Hall	2'7" x 8'7"	67 sq. ft	Yes
10	Bedroom	8'5" x 11'8"	85 sq. ft	Yes
11	Bedroom	9'10" x 10'10"	99 sq. ft	Yes
12	Primary Bedroom	17'4" x 10'7"	183 sq. ft	Yes
13	Bath	9'9" x 5'4"	52 sq. ft	Yes

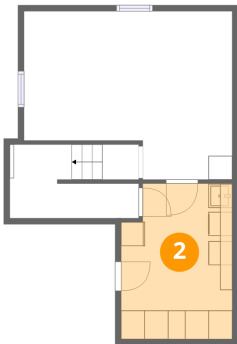
1 Floor 1 - Recreation Room



Dimensions: 17'5" x 14'1"
Area: 213 sq. ft
Counted as living area: Yes

Heated: Yes
Finished: Yes
Enclosed: Yes
Contiguous: Yes
Permitted: Yes
Wet space: No
Addition: No
Conversion: No

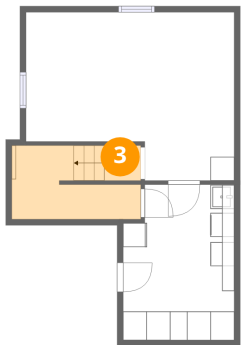
2 Floor 1 - Laundry



Dimensions: 9'4" x 13'0"
Area: 115 sq. ft
Counted as living area: Yes

Heated: Yes
Finished: Yes
Enclosed: Yes
Contiguous: Yes
Permitted: Yes
Wet space: No
Addition: No
Conversion: No

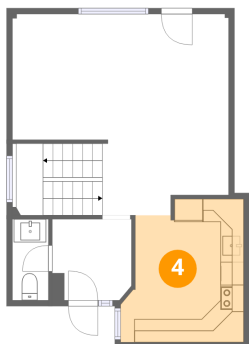
3 Floor 1 - Hall



Dimensions: 10'10" x 6'2"
Area: 64 sq. ft
Counted as living area: Yes

Heated: Yes
Finished: Yes
Enclosed: Yes
Contiguous: Yes
Permitted: Yes
Wet space: No
Addition: No
Conversion: No

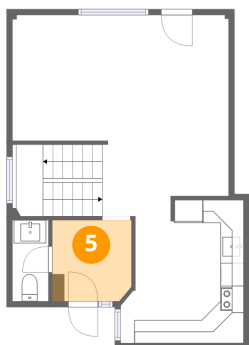
4 Floor 2 - Kitchen



Dimensions: 10'7" x 12'4"
Area: 115 sq. ft
Counted as living area: Yes

Heated: Yes
Finished: Yes
Enclosed: Yes
Contiguous: Yes
Permitted: Yes
Wet space: No
Addition: No
Conversion: No

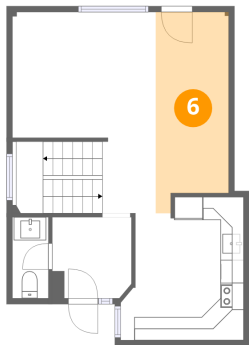
5 Floor 2 - Foyer



Dimensions: 6'10" x 7'0"
Area: 47 sq. ft
Counted as living area: Yes

Heated: Yes
Finished: Yes
Enclosed: Yes
Contiguous: Yes
Permitted: Yes
Wet space: No
Addition: No
Conversion: No

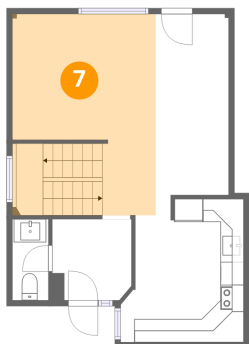
6 Floor 2 - Dining Area



Dimensions: 6'3" x 17'3"
Area: 100 sq. ft
Counted as living area: Yes

Heated: Yes
Finished: Yes
Enclosed: Yes
Contiguous: Yes
Permitted: Yes
Wet space: No
Addition: No
Conversion: No

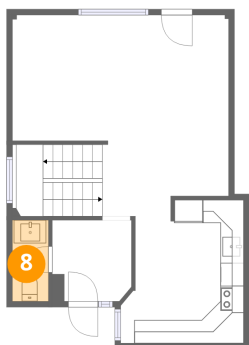
7 Floor 2 - Living Room



Dimensions: 12'4" x 17'3"
Area: 211 sq. ft
Counted as living area: Yes

Heated: Yes
Finished: Yes
Enclosed: Yes
Contiguous: Yes
Permitted: Yes
Wet space: No
Addition: No
Conversion: No

8 Floor 2 - Bath



Dimensions: 3'1" x 7'0"
Area: 22 sq. ft
Counted as living area: Yes

Heated: Yes
Finished: Yes
Enclosed: Yes
Contiguous: Yes
Permitted: Yes
Wet space: Yes
Addition: No
Conversion: No

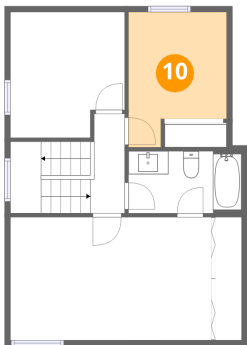
9 Floor 3 - Hall



Dimensions: 2'7" x 8'7"
Area: 67 sq. ft
Counted as living area: Yes

Heated: Yes
Finished: Yes
Enclosed: Yes
Contiguous: Yes
Permitted: Yes
Wet space: No
Addition: No
Conversion: No

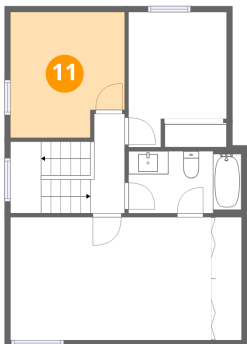
10 Floor 3 - Bedroom



Dimensions: 8'5" x 11'8"
Area: 85 sq. ft
Counted as living area: Yes

Heated: Yes
Finished: Yes
Enclosed: Yes
Contiguous: Yes
Permitted: Yes
Wet space: No
Addition: No
Conversion: No

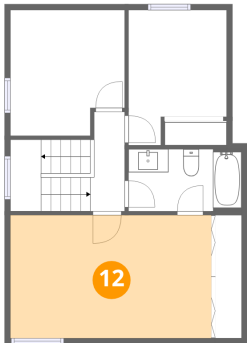
11 Floor 3 - Bedroom



Dimensions: 9'10" x 10'10"
Area: 99 sq. ft
Counted as living area: Yes

Heated: Yes
Finished: Yes
Enclosed: Yes
Contiguous: Yes
Permitted: Yes
Wet space: No
Addition: No
Conversion: No

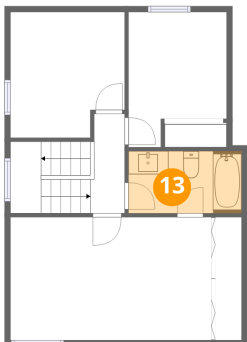
12 Floor 3 - Primary Bedroom



Dimensions: 17'4" x 10'7"
Area: 183 sq. ft
Counted as living area: Yes

Heated: Yes
Finished: Yes
Enclosed: Yes
Contiguous: Yes
Permitted: Yes
Wet space: No
Addition: No
Conversion: No

13 Floor 3 - Bath



Dimensions: 9'9" x 5'4"
Area: 52 sq. ft
Counted as living area: Yes

Heated: Yes
Finished: Yes
Enclosed: Yes
Contiguous: Yes
Permitted: Yes
Wet space: Yes
Addition: No
Conversion: No