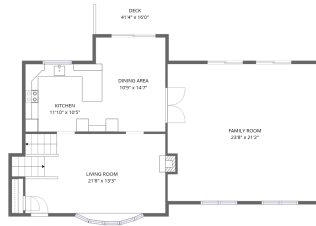


Home data report

40 Kristin Road, Plymouth, Plymouth County, Massachusetts,
United States, 02360



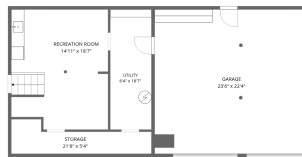
3rd floor



2nd floor



1st floor



Basement

Total Area: 2364 sq. ft

Basement: 280 sq. ft, 1st Floor: 518 sq. ft, 2nd Floor: 1080 sq. ft, 3rd Floor: 486 sq. ft

Excluded: Garage 524 sq. ft, Storage 85 sq. ft, Utility 118 sq. ft, Deck 463 sq. ft, Walls: 257 sq. ft

Property summary



4
Floors



3
Bedrooms

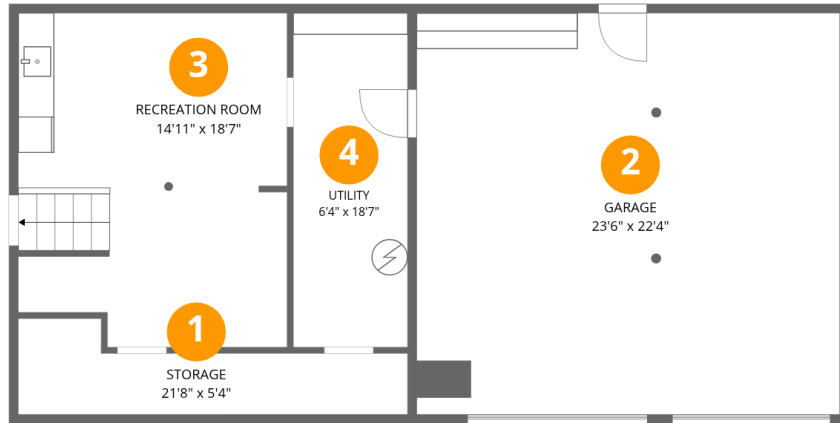


2
Bathrooms



1
Garages

40 Kristin Road, Plymouth, Plymouth County, Massachusetts,
United States, 02360



Room dimensions

Floor 1 Below grade

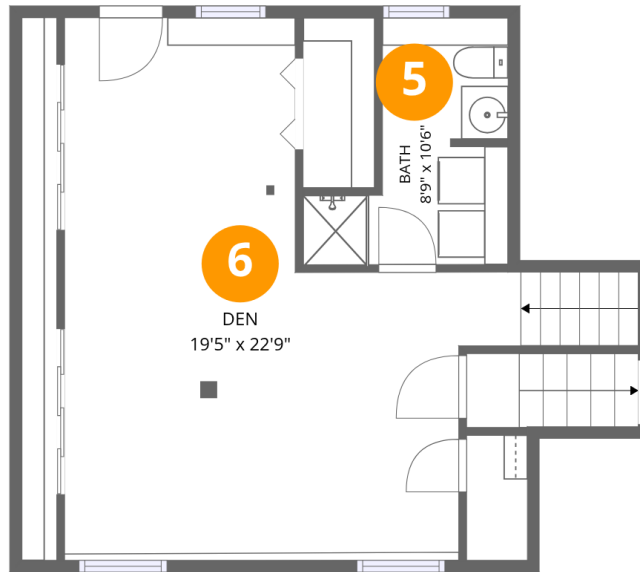
Total:280sqft

Excluded: 727sqft

#		Dimensions	sqft	Counted as living area
1	Storage	21'8" x 5'4"	83 sq. ft	No
2	Garage	23'6" x 22'4"	524 sq. ft	No
3	Recreation Room	14'11" x 18'7"	266 sq. ft	Yes
4	Utility	6'4" x 18'7"	118 sq. ft	No

Home data report

40 Kristin Road, Plymouth, Plymouth County, Massachusetts,
United States, 02360



Room dimensions

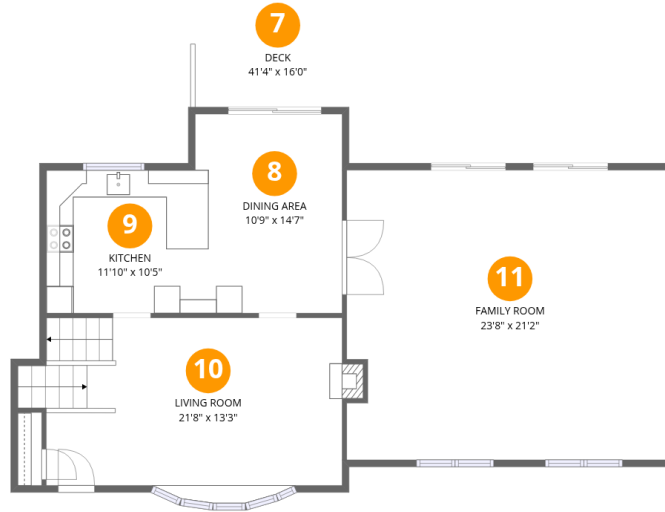
Floor 2

Total:518sqft Excluded: 0sqft

#		Dimensions	sqft	Counted as living area
5	Bath	8'9" x 10'6"	65 sq. ft	Yes
6	Den	19'5" x 22'9"	335 sq. ft	Yes

Home data report

40 Kristin Road, Plymouth, Plymouth County, Massachusetts,
United States, 02360



Room dimensions

Floor 3

Total:1080sqft

Excluded: 463sqft

#		Dimensions	sqft	Counted as living area
7	Deck	41'4" x 16'0"	463 sq. ft	No
8	Dining Area	10'9" x 14'7"	147 sq. ft	Yes
9	Kitchen	11'10" x 10'5"	124 sq. ft	Yes
10	Living Room	21'8" x 13'3"	285 sq. ft	Yes
11	Family Room	23'8" x 21'2"	497 sq. ft	Yes

Home data report

40 Kristin Road, Plymouth, Plymouth County, Massachusetts,
United States, 02360



Room dimensions

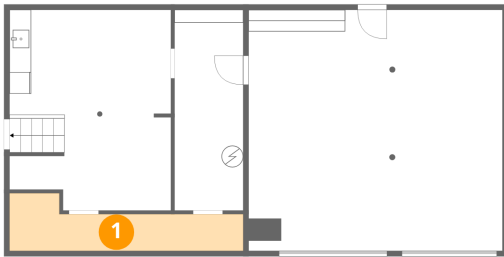
Floor 4

Total:486sqft Excluded: 0sqft

#		Dimensions	sqft	Counted as living area
12	Bedroom	9'3" x 8'11"	82 sq. ft	Yes
13	Bedroom	9'0" x 10'0"	86 sq. ft	Yes
14	Hall	15'3" x 3'2"	60 sq. ft	Yes
15	Primary Bedroom	12'5" x 10'7"	132 sq. ft	Yes
16	Bath	7'11" x 10'7"	57 sq. ft	Yes

40 Kristin Road, Plymouth, Plymouth County, Massachusetts,
United States, 02360

1 Floor 1 - Storage



Dimensions: 21'8" x 5'4"
Area: 83 sq. ft
Counted as living area: No

Heated: No
Finished: No
Enclosed: No
Contiguous: Yes
Permitted: Yes
Wet space: No
Addition: No
Conversion: No

2 Floor 1 - Garage

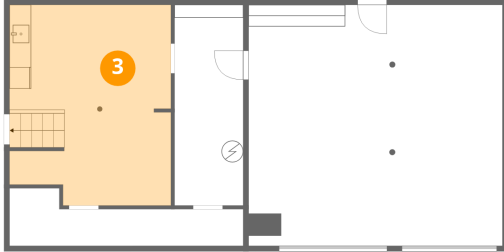


Dimensions: 23'6" x 22'4"
Area: 524 sq. ft
Counted as living area: No

Heated: No
Finished: No
Enclosed: Yes
Contiguous: Yes
Permitted: Yes
Wet space: No
Addition: No
Conversion: No

40 Kristin Road, Plymouth, Plymouth County, Massachusetts,
United States, 02360

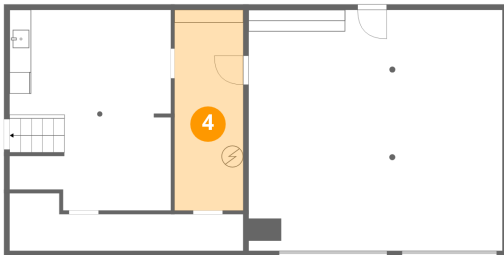
3 Floor 1 - Recreation Room



Dimensions: 14'11" x 18'7"
Area: 266 sq. ft
Counted as living area: Yes

Heated: Yes
Finished: Yes
Enclosed: Yes
Contiguous: Yes
Permitted: Yes
Wet space: No
Addition: No
Conversion: No

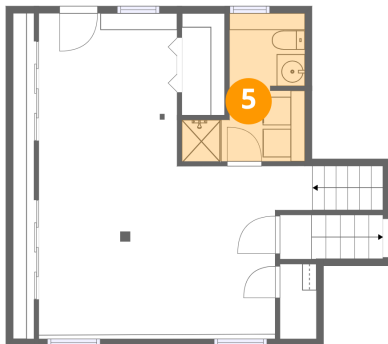
4 Floor 1 - Utility



Dimensions: 6'4" x 18'7"
Area: 118 sq. ft
Counted as living area: No

Heated: Yes
Finished: No
Enclosed: Yes
Contiguous: Yes
Permitted: Yes
Wet space: No
Addition: No
Conversion: No

5 Floor 2 - Bath

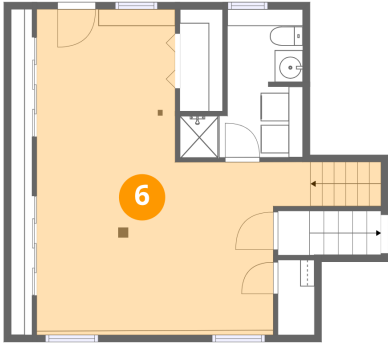


Dimensions: 8'9" x 10'6"
Area: 65 sq. ft
Counted as living area: Yes

Heated: Yes
Finished: Yes
Enclosed: Yes
Contiguous: Yes
Permitted: Yes
Wet space: Yes
Addition: No
Conversion: No

40 Kristin Road, Plymouth, Plymouth County, Massachusetts,
United States, 02360

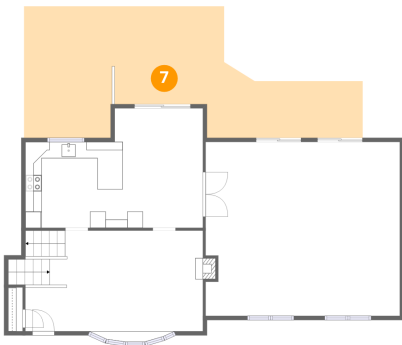
6 Floor 2 - Den



Dimensions: 19'5" x 22'9"
Area: 335 sq. ft
Counted as living area: Yes

Heated: Yes
Finished: Yes
Enclosed: Yes
Contiguous: Yes
Permitted: Yes
Wet space: No
Addition: No
Conversion: No

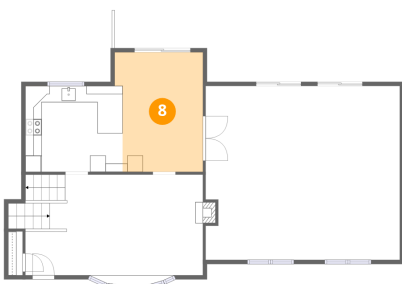
7 Floor 3 - Deck



Dimensions: 41'4" x 16'0"
Area: 463 sq. ft
Counted as living area: No

Heated: No
Finished: No
Enclosed: No
Contiguous: Yes
Permitted: Yes
Wet space: No
Addition: No
Conversion: No

8 Floor 3 - Dining Area

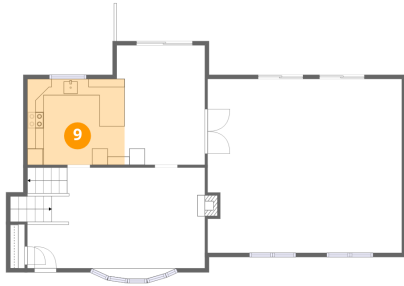


Dimensions: 10'9" x 14'7"
Area: 147 sq. ft
Counted as living area: Yes

Heated: Yes
Finished: Yes
Enclosed: Yes
Contiguous: Yes
Permitted: Yes
Wet space: No
Addition: No
Conversion: No

40 Kristin Road, Plymouth, Plymouth County, Massachusetts,
United States, 02360

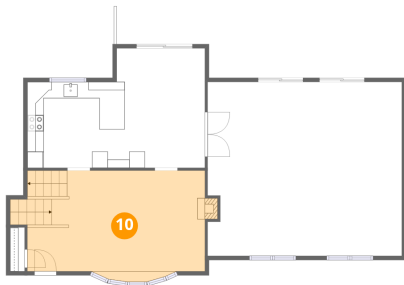
9 Floor 3 - Kitchen



Dimensions: 11'10" x 10'5"
Area: 124 sq. ft
Counted as living area: Yes

Heated: Yes
Finished: Yes
Enclosed: Yes
Contiguous: Yes
Permitted: Yes
Wet space: No
Addition: No
Conversion: No

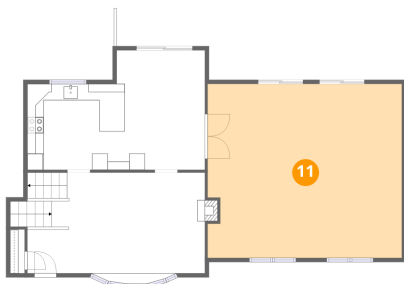
10 Floor 3 - Living Room



Dimensions: 21'8" x 13'3"
Area: 285 sq. ft
Counted as living area: Yes

Heated: Yes
Finished: Yes
Enclosed: Yes
Contiguous: Yes
Permitted: Yes
Wet space: No
Addition: No
Conversion: No

11 Floor 3 - Family Room

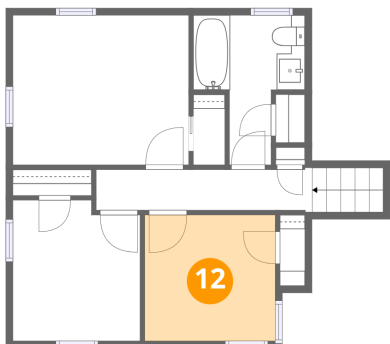


Dimensions: 23'8" x 21'2"
Area: 497 sq. ft
Counted as living area: Yes

Heated: Yes
Finished: Yes
Enclosed: Yes
Contiguous: Yes
Permitted: Yes
Wet space: No
Addition: No
Conversion: No

40 Kristin Road, Plymouth, Plymouth County, Massachusetts,
United States, 02360

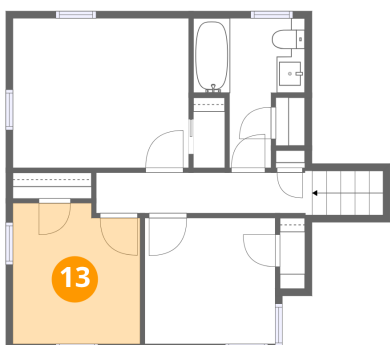
12 Floor 4 - Bedroom



Dimensions: 9'3" x 8'11"
Area: 82 sq. ft
Counted as living area: Yes

Heated: Yes
Finished: Yes
Enclosed: Yes
Contiguous: Yes
Permitted: Yes
Wet space: No
Addition: No
Conversion: No

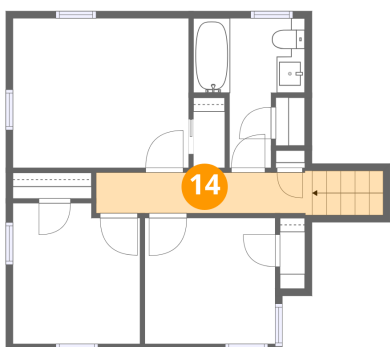
13 Floor 4 - Bedroom



Dimensions: 9'0" x 10'0"
Area: 86 sq. ft
Counted as living area: Yes

Heated: Yes
Finished: Yes
Enclosed: Yes
Contiguous: Yes
Permitted: Yes
Wet space: No
Addition: No
Conversion: No

14 Floor 4 - Hall

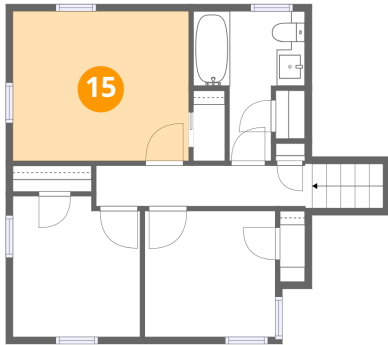


Dimensions: 15'3" x 3'2"
Area: 60 sq. ft
Counted as living area: Yes

Heated: Yes
Finished: Yes
Enclosed: Yes
Contiguous: Yes
Permitted: Yes
Wet space: No
Addition: No
Conversion: No

40 Kristin Road, Plymouth, Plymouth County, Massachusetts,
United States, 02360

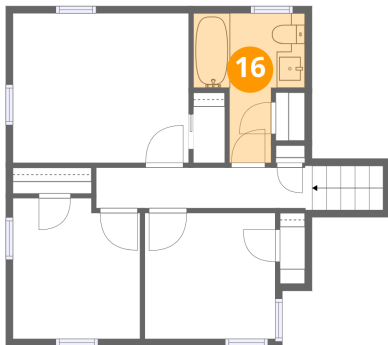
15 Floor 4 - Primary Bedroom



Dimensions: 12'5" x 10'7"
Area: 132 sq. ft
Counted as living area: Yes

Heated: Yes
Finished: Yes
Enclosed: Yes
Contiguous: Yes
Permitted: Yes
Wet space: No
Addition: No
Conversion: No

16 Floor 4 - Bath



Dimensions: 7'11" x 10'7"
Area: 57 sq. ft
Counted as living area: Yes

Heated: Yes
Finished: Yes
Enclosed: Yes
Contiguous: Yes
Permitted: Yes
Wet space: Yes
Addition: No
Conversion: No