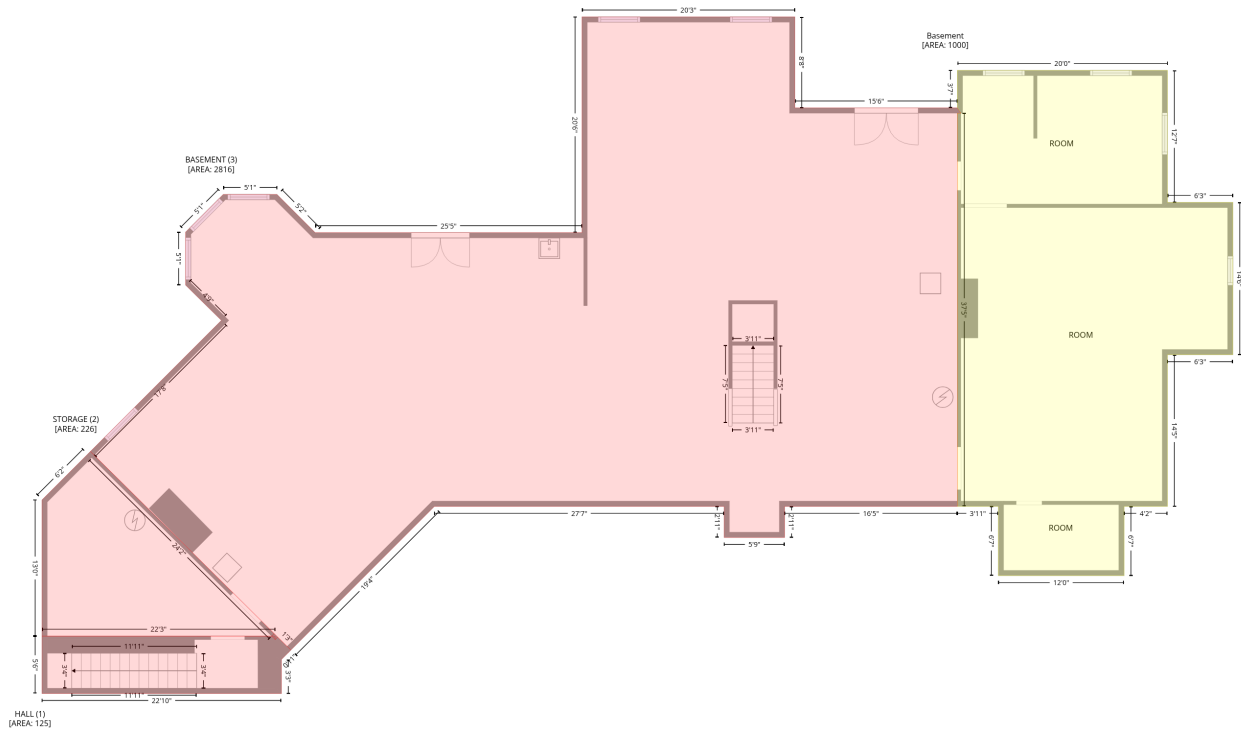


# 5 Pegan Lane, Natick, Middlesex County, Massachusetts, United States, 01760

Gross Living Area: 7487 sq. ft

## Level 1 - Below Grade



Space	Area (sq. ft)	Calculation <small>Coordinate Polygon Area Algorithm using inches</small>
Basement (Living area)	1000	$-\left(\left(1376.8 + 1376.8\right) * \left(262.9 - 413.7\right) + \left(1376.8 + 1451.6\right) * \left(413.7 - 413.7\right) + \left(1451.6 + 1451.6\right) * \left(413.7 - 587.8\right) + \left(1451.6 + 1376.8\right) * \left(587.8 - 587.8\right) + \left(1376.8 + 1376.8\right) * \left(587.8 - 761.1\right) + \left(1376.8 + 1327.2\right) * \left(761.1 - 761.1\right) + \left(1327.2 + 1327.2\right) * \left(761.1 - 840.2\right) + \left(1327.2 + 1183.4\right) * \left(840.2 - 840.2\right) + \left(1183.4 + 1183.4\right) * \left(840.2 - 761.1\right) + \left(1183.4 + 1136.5\right) * \left(761.1 - 761.1\right) + \left(1136.5 + 1136.5\right) * \left(761.1 - 311.9\right) + \left(1136.5 + 1140.5\right) * \left(311.9 - 311.9\right) + \left(1140.5 + 1136.5\right) * \left(311.9 - 305.9\right) + \left(1136.5 + 1136.5\right) * \left(305.9 - 262.9\right) + \left(1136.5 + 1376.8\right) * \left(262.9 - 262.9\right) * 0.5 * 0.00694$
HALL (Non-living area)	125	$-\left(\left(356.6 + 356.6\right) * \left(909.2 - 913.2\right) + \left(356.6 + 359.4\right) * \left(913.2 - 910.4\right) + \left(359.4 + 370.2\right) * \left(910.4 - 921.1\right) + \left(370.2 + 370.4\right) * \left(921.1 - 920.9\right) + \left(370.4 + 374.6\right) * \left(920.9 - 925.1\right) + \left(374.6 + 371.5\right) * \left(925.1 - 928.1\right) + \left(371.5 + 371.6\right) * \left(928.1 - 928.1\right) + \left(371.6 + 363.8\right) * \left(928.1 - 936\right) + \left(363.8 + 363.8\right) * \left(936 - 974.8\right) + \left(363.8 + 90.1\right) * \left(974.8 - 974.8\right) + \left(90.1 + 90.1\right) * \left(974.8 - 909.2\right) + \left(90.1 + 356.6\right) * \left(909.2 - 909.2\right) * 0.5 * 0.00694$
STORAGE (Non-living area)	226	$-\left(\left(145.4 + 148.5\right) * \left(698.3 - 701.2\right) + \left(148.5 + 149.7\right) * \left(701.2 - 702.6\right) + \left(149.7 + 355.4\right) * \left(702.6 - 906.4\right) + \left(355.4 + 352.6\right) * \left(906.4 - 909.3\right) + \left(352.6 + 96.1\right) * \left(909.3 - 909.2\right) + \left(96.1 + 90.1\right) * \left(909.2 - 909.2\right) + \left(90.1 + 90.1\right) * \left(909.2 - 753.6\right) + \left(90.1 + 142.5\right) * \left(753.6 - 701.3\right) + \left(142.5 + 145.3\right) * \left(701.3 - 698.4\right) + \left(145.3 + 145.4\right) * \left(698.4 - 698.3\right) * 0.5 * 0.00694$

# 5 Pegan Lane, Natick, Middlesex County, Massachusetts, United States, 01760

Gross Living Area: 7487 sq. ft

## Level 1 - Below Grade

Space	Area (sq. ft)	Calculation <small>Coordinate Polygon Area Algorithm using inches</small>
BASEMENT (Non-living area)	2816	$\begin{aligned} & -((950.8 + 950.8) * (201.9 - 305.9) + (950.8 + 1136.5) * (305.9 - 305.9) + (1136.5 + 1140.5) * \\ & (305.9 - 311.9) + (1140.5 + 1136.5) * (311.9 - 311.9) + (1136.5 + 1136.5) * (311.9 - 761.1) + \\ & (1136.5 + 939.1) * (761.1 - 761.1) + (939.1 + 939.1) * (761.1 - 796.6) + (939.1 + 869.9) * (796.6 - \\ & 796.6) + (869.9 + 869.9) * (796.6 - 761.1) + (869.9 + 538.7) * (761.1 - 761.1) + (538.7 + 374.6) * \\ & (761.1 - 925.1) + (374.6 + 370.4) * (925.1 - 920.9) + (370.4 + 149.7) * (920.9 - 702.5) + (149.7 + \\ & 145.4) * (702.5 - 698.3) + (145.4 + 295.2) * (698.3 - 548.6) + (295.2 + 254.3) * (548.6 - 508.3) + \\ & (254.3 + 254.3) * (508.3 - 447.7) + (254.3 + 297.3) * (447.7 - 404.7) + (297.3 + 358.7) * (404.7 - \\ & 404.7) + (358.7 + 402.4) * (404.7 - 448.4) + (402.4 + 707.4) * (448.4 - 448.4) + (707.4 + 707.4) * \\ & (448.4 - 201.9) + (707.4 + 950.8) * (201.9 - 201.9) * 0.5 * 0.00694 + -((355.4 + 359.4) * (906.4 - \\ & 910.4) + (359.4 + 356.6) * (910.4 - 913.2) + (356.6 + 352.6) * (913.2 - 909.3) + (352.6 + 355.4) * \\ & (909.3 - 906.4)) * 0.5 * 0.00694 \end{aligned}$



# 5 Pegan Lane, Natick, Middlesex County, Massachusetts, United States, 01760

Gross Living Area: 7487 sq. ft

## Level 2

Space	Area (sq. ft)	Calculation <small>Coordinate Polygon Area Algorithm using inches</small>
1st floor (Living area)	4217	$-\left((87 + 87) * (1058.6 - 1145.3) + (87 + 27.5) * (1145.3 - 1145.3) + (27.5 + 27.5) * (1145.3 - 1058.6) + (27.5 + 87) * (1058.6 - 1058.6)\right) * 0.5 * 0.00694 + -\left((950.8 + 950.8) * (201.9 - 305.9) + (950.8 + 1136.5) * (305.9 - 305.9) + (1136.5 + 1136.5) * (305.9 - 262.9) + (1136.5 + 1376.8) * (262.9 - 262.9) + (1376.8 + 1376.8) * (262.9 - 413.7) + (1376.8 + 1451.6) * (413.7 - 413.7) + (1451.6 + 1451.6) * (413.7 - 587.8) + (1451.6 + 1376.8) * (587.8 - 587.8) + (1376.8 + 1376.8) * (587.8 - 761.1) + (1376.8 + 1327.2) * (761.1 - 761.1) + (1327.2 + 1327.2) * (761.1 - 840.2) + (1327.2 + 1183.4) * (840.2 - 840.2) + (1183.4 + 1183.4) * (840.2 - 761.1) + (1183.4 + 939.1) * (761.1 - 761.1) + (939.1 + 939.1) * (761.1 - 796.6) + (939.1 + 869.9) * (796.6 - 796.6) + (869.9 + 869.9) * (796.6 - 761.1) + (869.9 + 798.3) * (761.1 - 761.1) + (798.3 + 798.3) * (761.1 - 796.6) + (798.3 + 746.2) * (796.6 - 796.6) + (746.2 + 746.2) * (796.6 - 761.1) + (746.2 + 538.7) * (761.1 - 761.1) + (538.7 + 363.8) * (761.1 - 936) + (363.8 + 363.8) * (936 - 974.8) + (363.8 + 96.1) * (974.8 - 974.8) + (96.1 + 96.1) * (974.8 - 968.8) + (96.1 + 90.1) * (968.8 - 968.8) + (90.1 + 90.1) * (968.8 - 753.6) + (90.1 + 295.1) * (753.6 - 548.6) + (295.1 + 254.3) * (548.6 - 508.7) + (254.3 + 254.3) * (508.7 - 447.7) + (254.3 + 297.3) * (447.7 - 404.7) + (297.3 + 358.7) * (404.7 - 404.7) + (358.7 + 402.4) * (404.7 - 448.4) + (402.4 + 707.4) * (448.4 - 448.4) + (707.4 + 707.4) * (448.4 - 201.9) + (707.4 + 950.8) * (201.9 - 201.9)\right) * 0.5 * 0.00694$
GARAGE (Non-living area)	883	$-\left((96.1 + 96.1) * (968.8 - 974.8) + (96.1 + 363.8) * (974.8 - 974.8) + (363.8 + 363.8) * (974.8 - 1367) + (363.8 + 27.5) * (1367 - 1367) + (27.5 + 27.5) * (1367 - 1145.3) + (27.5 + 87) * (1145.3 - 1145.3) + (87 + 87) * (1145.3 - 1058.6) + (87 + 27.5) * (1058.6 - 1058.6) + (27.5 + 27.5) * (1058.6 - 968.8) + (27.5 + 96.1) * (968.8 - 968.8)\right) * 0.5 * 0.00694$
BALCONY (Non-living area)	261	$-\left((1372.8 + 1372.8) * (138.2 - 262.9) + (1372.8 + 1136.5) * (262.9 - 262.9) + (1136.5 + 1136.5) * (262.9 - 305.9) + (1136.5 + 950.8) * (305.9 - 305.9) + (950.8 + 950.8) * (305.9 - 178.4) + (950.8 + 1056.9) * (178.4 - 178.4) + (1056.9 + 1056.9) * (178.4 - 212.7) + (1056.9 + 1314.2) * (212.7 - 210) + (1314.2 + 1314.2) * (210 - 138.2) + (1314.2 + 1372.8) * (138.2 - 138.2)\right) * 0.5 * 0.00694$
PORCH (Non-living area)	621	$-\left((746.2 + 746.2) * (761.1 - 796.6) + (746.2 + 798.3) * (796.6 - 796.6) + (798.3 + 798.3) * (796.6 - 761.1) + (798.3 + 869.9) * (761.1 - 761.1) + (869.9 + 869.9) * (761.1 - 796.6) + (869.9 + 939.1) * (796.6 - 796.6) + (939.1 + 939.1) * (796.6 - 761.1) + (939.1 + 1183.4) * (761.1 - 761.1) + (1183.4 + 1183.4) * (761.1 - 870.1) + (1183.4 + 567.4) * (870.1 - 870.1) + (567.4 + 455.7) * (870.1 - 1003.2) + (455.7 + 363.8) * (1003.2 - 1003.2) + (363.8 + 363.8) * (1003.2 - 936) + (363.8 + 503.2) * (936 - 796.6) + (503.2 + 538.7) * (796.6 - 761.1) + (538.7 + 746.2) * (761.1 - 761.1)\right) * 0.5 * 0.00694$
DECK (Non-living area)	1041	$-\left((707.4 + 707.4) * (206.2 - 448.4) + (707.4 + 402.4) * (448.4 - 448.4) + (402.4 + 358.7) * (448.4 - 404.7) + (358.7 + 297.3) * (404.7 - 404.7) + (297.3 + 254.3) * (404.7 - 447.7) + (254.3 + 254.3) * (447.7 - 508.7) + (254.3 + 295.1) * (508.7 - 548.6) + (295.1 + 140.1) * (548.6 - 703.7) + (140.1 + 137) * (703.7 - 706.7) + (137 + 90.1) * (706.7 - 753.6) + (90.1 + 90.1) * (753.6 - 968.8) + (90.1 + 31.5) * (968.8 - 968.8) + (31.5 + 31.5) * (968.8 - 816.7) + (31.5 + -26.5) * (816.7 - 816.7) + (-26.5 + -26.5) * (816.7 - 769.9) + (-26.5 + 31.5) * (769.9 - 769.9) + (31.5 + 31.5) * (769.9 - 619.3) + (31.5 + 180.2) * (619.3 - 470.9) + (180.2 + 180.2) * (470.9 - 435.3) + (180.2 + 271.7) * (435.3 - 327.6) + (271.7 + 322.5) * (327.6 - 327.6) + (322.5 + 322.5) * (327.6 - 255.3) + (322.5 + 640.3) * (255.3 - 255.3) + (640.3 + 640.3) * (255.3 - 251.3) + (640.3 + 473) * (251.3 - 251.3) + (473 + 473) * (251.3 - 206.2) + (473 + 707.4) * (206.2 - 206.2)\right) * 0.5 * 0.00694$



# 5 Pegan Lane, Natick, Middlesex County, Massachusetts, United States, 01760

Gross Living Area: 7487 sq. ft

## Level 3

Space	Area (sq. ft)	Calculation <small>Coordinate Polygon Area Algorithm using inches</small>
2nd floor (Living area)	3270	$  \begin{aligned}  & -((111 + 112.3) * (738.5 - 739.9) + (112.3 + 112.2) * (739.9 - 739.9) + (112.2 + 172.8) * (739.9 - 799.6) + (172.8 + 204.2) * (799.6 - 766.9) + (204.2 + 365.7) * (766.9 - 925.4) + (365.7 + 369.7) * \\  & (925.4 - 921.6) + (369.7 + 374) * (921.6 - 925.8) + (374 + 370.1) * (925.8 - 929.5) + (370.1 + 370.2) * (929.5 - 929.6) + (370.2 + 363.8) * (929.6 - 936) + (363.8 + 363.8) * (936 - 974.8) + \\  & (363.8 + 302.8) * (974.8 - 974.8) + (302.8 + 302.8) * (974.8 - 1058.6) + (302.8 + 363.8) * (1058.6 - 1058.6) + (363.8 + 363.8) * (1058.6 - 1145.3) + (363.8 + 302.8) * (1145.3 - 1145.3) + (302.8 + 302.8) * (1145.3 - 1209.8) + (302.8 + 363.8) * (1209.8 - 1209.8) + (363.8 + 363.8) * (1209.8 - 1299.6) + (363.8 + 302.8) * (1299.6 - 1299.6) + (302.8 + 302.8) * (1299.6 - 1367) + (302.8 + 81) * \\  & (1367 - 1367) + (81 + 81) * (1367 - 1299.6) + (81 + 27.5) * (1299.6 - 1299.6) + (27.5 + 27.5) * (1299.6 - 1209.8) + (27.5 + 81) * (1209.8 - 1209.8) + (81 + 81) * (1209.8 - 1145.3) + (81 + 27.5) * \\  & (1145.3 - 1145.3) + (27.5 + 27.5) * (1145.3 - 1058.6) + (27.5 + 81) * (1058.6 - 1058.6) + (81 + 81) * (1058.6 - 968.8) + (81 + 112.1) * (968.8 - 968.8) + (112.1 + 112.1) * (968.8 - 863) + (112.1 + 46.4) * (863 - 797.3) + (46.4 + 105.1) * (797.3 - 738.5) + (105.1 + 107.9) * (738.5 - 735.8) + \\  & (107.9 + 111) * (735.8 - 738.5) * 0.5 * 0.00694 + -((358.7 + 402.4) * (404.7 - 448.4) + (402.4 + 707.4) * (448.4 - 448.4) + (707.4 + 713.4) * (448.4 - 454.4) + (713.4 + 927.2) * (454.4 - 454.4) + (927.2 + 927.2) * (454.4 - 449.4) + (927.2 + 944.8) * (449.4 - 449.4) + (944.8 + 950.8) * (449.4 - 448.4) + (950.8 + 1136.5) * (448.4 - 448.4) + (1136.5 + 1136.5) * (448.4 - 413.7) + (1136.5 + 1451.6) * (413.7 - 413.7) + (1451.6 + 1451.6) * (413.7 - 587.8) + (1451.6 + 1327.2) * (587.8 - 587.8) + (1327.2 + 1327.1) * (587.8 - 581.8) + (1327.1 + 1142.5) * (581.8 - 581.8) + (1142.5 + 1142.5) * (581.8 - 761.1) + (1142.5 + 1076.4) * (761.1 - 761.1) + (1076.4 + 1076.4) * (761.1 - 820.9) + (1076.4 + 983.3) * (820.9 - 820.9) + (983.3 + 983.3) * (820.9 - 761.1) + (983.3 + 902.4) * (761.1 - 761.1) + (902.4 + 902.4) * (761.1 - 820.9) + (902.4 + 754.6) * (820.9 - 820.9) + (754.6 + 754.6) * (820.9 - 761.1) + (754.6 + 675.2) * (761.1 - 761.1) + (675.2 + 675.2) * (761.1 - 820.9) + (675.2 + 585.7) * (820.9 - 820.9) + (585.7 + 585.7) * (820.9 - 761.1) + (585.7 + 538.7) * (761.1 - 761.1) + (538.7 + 526.7) * (761.1 - 773.1) + (526.7 + 522.4) * (773.1 - 768.9) + (522.4 + 302.4) * (768.9 - 549.6) + (302.4 + 260.3) * (549.6 - 506.1) + (260.3 + 254.3) * (506.1 - 508.6) + (254.3 + 254.3) * (508.6 - 447.7) + (254.3 + 297.3) * (447.7 - 404.7) + (297.3 + 358.7) * (404.7 - 404.7)) * 0.5 * 0.00694  \end{aligned}  $
OPEN TO BELOW (Non-living area)	426	$  \begin{aligned}  & -((950.8 + 950.8) * (201.9 - 448.4) + (950.8 + 944.8) * (448.4 - 449.4) + (944.8 + 927.2) * (449.4 - 449.4) + (927.2 + 927.2) * (449.4 - 454.4) + (927.2 + 713.4) * (454.4 - 454.4) + (713.4 + 707.4) * (454.4 - 448.4) + (707.4 + 707.4) * (448.4 - 201.9) + (707.4 + 950.8) * (201.9 - 201.9)) * 0.5 * 0.00694  \end{aligned}  $
LOW CEILING (Non-living area)	527	$  \begin{aligned}  & -((301.2 + 302.4) * (548.5 - 549.6) + (302.4 + 489) * (549.6 - 735.6) + (489 + 522.4) * (735.6 - 768.9) + (522.4 + 526.7) * (768.9 - 773.1) + (526.7 + 374) * (773.1 - 925.8) + (374 + 369.7) * (925.8 - 921.6) + (369.7 + 372.6) * (921.6 - 918.7) + (372.6 + 369.6) * (918.7 - 921.5) + (369.6 + 368.1) * (921.5 - 923) + (368.1 + 365.7) * (923 - 925.4) + (365.7 + 363.4) * (925.4 - 923) + (363.4 + 361.8) * (923 - 921.6) + (361.8 + 358.7) * (921.6 - 918.6) + (358.7 + 302.3) * (918.6 - 863) + (302.3 + 237.5) * (863 - 799.6) + (237.5 + 204.2) * (799.6 - 766.9) + (204.2 + 172.8) * (766.9 - 799.6) + (172.8 + 112.3) * (799.6 - 739.9) + (112.3 + 111) * (739.9 - 738.5) + (111 + 110.2) * (738.5 - 737.8) + (110.2 + 108.1) * (737.8 - 735.6) + (108.1 + 295.1) * (735.6 - 548.6) + (295.1 + 301.2) * (548.6 - 548.5)) * 0.5 * 0.00694  \end{aligned}  $
LOW CEILING (Non-living area)	309	$  \begin{aligned}  & -((1327.1 + 1327.2) * (581.8 - 587.8) + (1327.2 + 1327.2) * (587.8 - 840.2) + (1327.2 + 1183.4) * (840.2 - 840.2) + (1183.4 + 1183.4) * (840.2 - 761.1) + (1183.4 + 1142.5) * (761.1 - 761.1) + (1142.5 + 1142.5) * (761.1 - 581.8) + (1142.5 + 1327.1) * (581.8 - 581.8)) * 0.5 * 0.00694  \end{aligned}  $