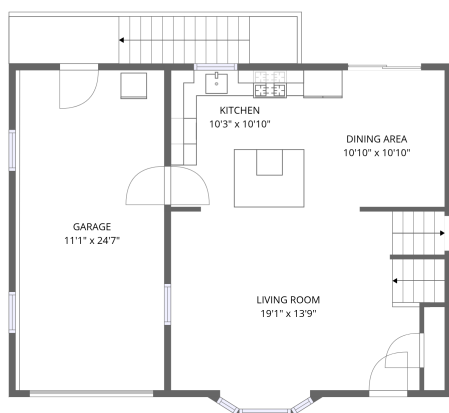
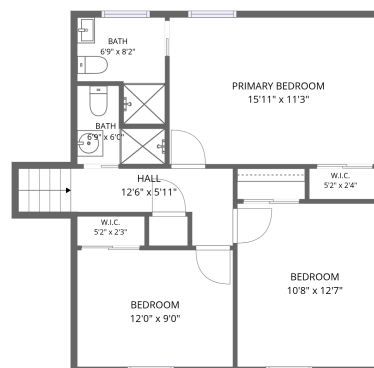


## Home data report

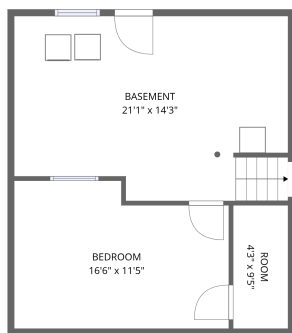
358 Keesling Avenue Northwest, Beverly Heights, Salem, Salem city, Virginia, United States, 24153



3rd floor



4th floor



1st floor



2nd floor

**Total Area: 1916 sq. ft**

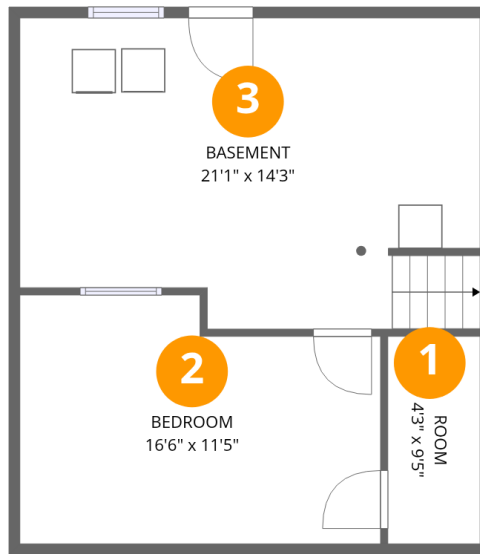
1st Floor: 181 sq. ft, 2nd Floor: 584 sq. ft, 3rd Floor: 518 sq. ft, 4th Floor: 633 sq. ft

Excluded: Room 41 sq. ft, Basement 283 sq. ft, Garage 282 sq. ft, Embedded window 9 sq. ft, Walls: 227 sq. ft

## Property summary



**358 Keesling Avenue Northwest, Beverly Heights, Salem, Salem city, Virginia, United States, 24153**



## Room dimensions

Floor 1

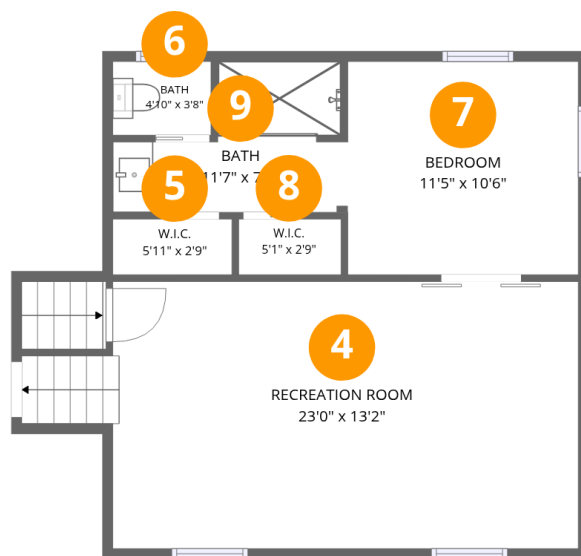
Total:181sqft

Excluded: 324sqft

#		Dimensions	sqft	Counted as living area
1	Room	4'3" x 9'5"	40 sq. ft	No
2	Bedroom	16'6" x 11'5"	172 sq. ft	Yes
3	Basement	21'1" x 14'3"	282 sq. ft	No

## Home data report

358 Keesling Avenue Northwest, Beverly Heights, Salem, Salem city, Virginia, United States, 24153



## Room dimensions

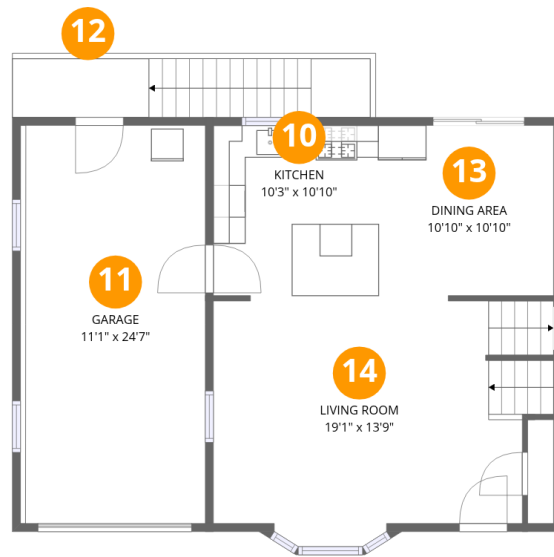
Floor 2

Total:584sqft Excluded: 0sqft

#		Dimensions	sqft	Counted as living area
4	Recreation Room	23'0" x 13'2"	318 sq. ft	Yes
5	W.I.C.	5'11" x 2'9"	16 sq. ft	Yes
6	Bath	4'10" x 3'8"	18 sq. ft	Yes
7	Bedroom	11'5" x 10'6"	120 sq. ft	Yes
8	W.I.C.	5'1" x 2'9"	14 sq. ft	Yes
9	Bath	11'7" x 7'5"	64 sq. ft	Yes

Home data report

358 Keesling Avenue Northwest, Beverly Heights, Salem, Salem city, Virginia, United States, 24153



### Room dimensions

Floor 3

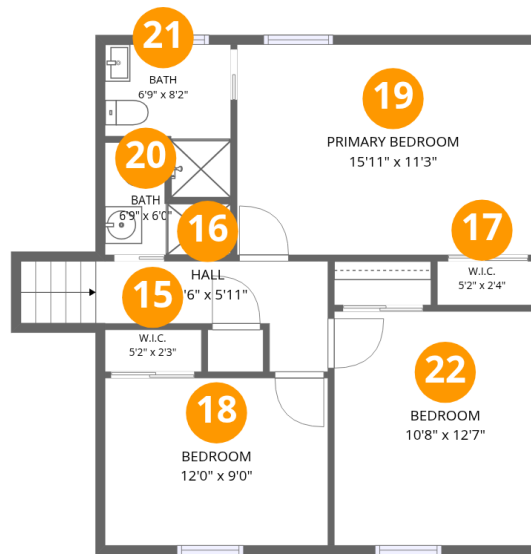
Total:518sqft

Excluded: 291sqft

#		Dimensions	sqft	Counted as living area
10	Kitchen	10'3" x 10'10"	110 sq. ft	Yes
11	Garage	11'1" x 24'7"	282 sq. ft	No
12	Outdoor	8'5" x 3'8"	80 sq. ft	No
13	Dining Area	10'10" x 10'10"	115 sq. ft	Yes
14	Living Room	19'1" x 13'9"	275 sq. ft	Yes

## Home data report

358 Keesling Avenue Northwest, Beverly Heights, Salem, Salem city, Virginia, United States, 24153



## Room dimensions

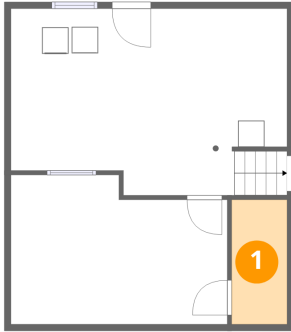
Floor 4

Total:633sqft Excluded: 0sqft

#		Dimensions	sqft	Counted as living area
15	W.I.C.	5'2" x 2'3"	12 sq. ft	Yes
16	Hall	12'6" x 5'11"	63 sq. ft	Yes
17	W.I.C.	5'2" x 2'4"	12 sq. ft	Yes
18	Bedroom	12'0" x 9'0"	107 sq. ft	Yes
19	Primary Bedroom	15'11" x 11'3"	180 sq. ft	Yes
20	Bath	6'9" x 6'0"	29 sq. ft	Yes
21	Bath	6'9" x 8'2"	44 sq. ft	Yes
22	Bedroom	10'8" x 12'7"	134 sq. ft	Yes

358 Keesling Avenue Northwest, Beverly Heights, Salem, Salem city, Virginia, United States, 24153

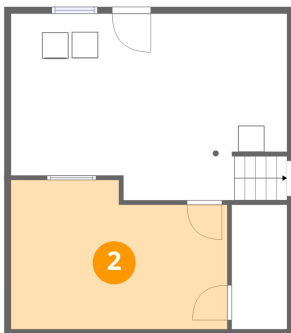
1 Floor 1 - Room



Dimensions: 4'3" x 9'5"  
Area: 40 sq. ft  
Counted as living area: No

Heated: Yes  
Finished: No  
Enclosed: Yes  
Contiguous: Yes  
Permitted: Yes  
Wet space: No  
Addition: No  
Conversion: No

2 Floor 1 - Bedroom

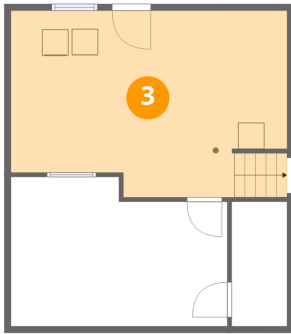


Dimensions: 16'6" x 11'5"  
Area: 172 sq. ft  
Counted as living area: No

Heated: Yes  
Finished: Yes  
Enclosed: Yes  
Contiguous: No  
Permitted: Yes  
Wet space: No  
Addition: No  
Conversion: No

358 Keesling Avenue Northwest, Beverly Heights, Salem, Salem city, Virginia, United States, 24153

### 3 Floor 1 - Basement



Dimensions: 21'1" x 14'3"  
Area: 282 sq. ft  
Counted as living area: No

Heated: Yes  
Finished: No  
Enclosed: Yes  
Contiguous: Yes  
Permitted: Yes  
Wet space: No  
Addition: No  
Conversion: No

### 4 Floor 2 - Recreation Room



Dimensions: 23'0" x 13'2"  
Area: 318 sq. ft  
Counted as living area: Yes

Heated: Yes  
Finished: Yes  
Enclosed: Yes  
Contiguous: Yes  
Permitted: Yes  
Wet space: No  
Addition: No  
Conversion: No

### 5 Floor 2 - W.I.C.

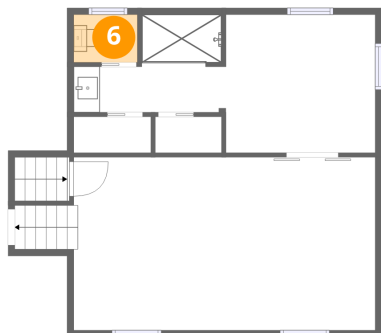


Dimensions: 5'11" x 2'9"  
Area: 16 sq. ft  
Counted as living area: Yes

Heated: Yes  
Finished: Yes  
Enclosed: Yes  
Contiguous: Yes  
Permitted: Yes  
Wet space: No  
Addition: No  
Conversion: No

358 Keesling Avenue Northwest, Beverly Heights, Salem, Salem city, Virginia, United States, 24153

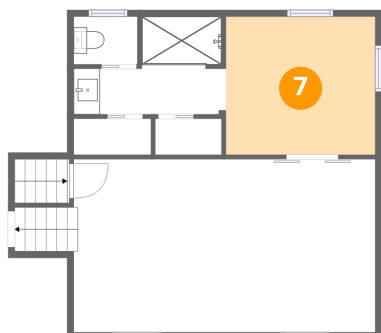
**6** Floor 2 - Bath



Dimensions: 4'10" x 3'8"  
Area: 18 sq. ft  
Counted as living area: Yes

Heated: Yes  
Finished: Yes  
Enclosed: Yes  
Contiguous: Yes  
Permitted: Yes  
Wet space: Yes  
Addition: No  
Conversion: No

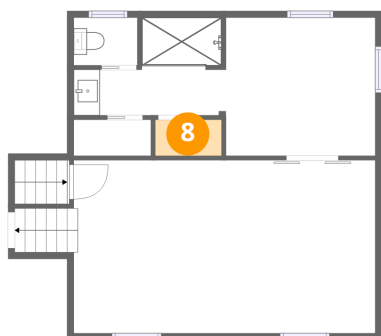
**7** Floor 2 - Bedroom



Dimensions: 11'5" x 10'6"  
Area: 120 sq. ft  
Counted as living area: Yes

Heated: Yes  
Finished: Yes  
Enclosed: Yes  
Contiguous: Yes  
Permitted: Yes  
Wet space: No  
Addition: No  
Conversion: No

**8** Floor 2 - W.I.C.



Dimensions: 5'1" x 2'9"  
Area: 14 sq. ft  
Counted as living area: Yes

Heated: Yes  
Finished: Yes  
Enclosed: Yes  
Contiguous: Yes  
Permitted: Yes  
Wet space: No  
Addition: No  
Conversion: No

358 Keesling Avenue Northwest, Beverly Heights, Salem, Salem city, Virginia, United States, 24153

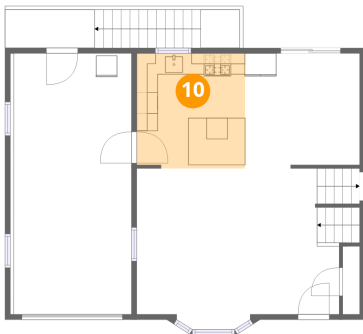
9 Floor 2 - Bath



Dimensions: 11'7" x 7'5"  
Area: 64 sq. ft  
Counted as living area: Yes

Heated: Yes  
Finished: Yes  
Enclosed: Yes  
Contiguous: Yes  
Permitted: Yes  
Wet space: Yes  
Addition: No  
Conversion: No

10 Floor 3 - Kitchen



Dimensions: 10'3" x 10'10"  
Area: 110 sq. ft  
Counted as living area: Yes

Heated: Yes  
Finished: Yes  
Enclosed: Yes  
Contiguous: Yes  
Permitted: Yes  
Wet space: No  
Addition: No  
Conversion: No

11 Floor 3 - Garage

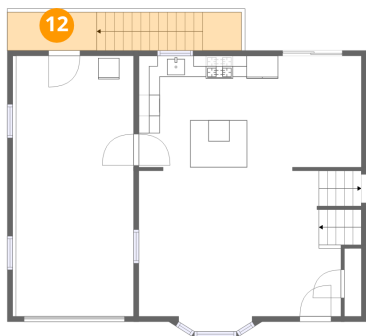


Dimensions: 11'1" x 24'7"  
Area: 282 sq. ft  
Counted as living area: No

Heated: No  
Finished: No  
Enclosed: Yes  
Contiguous: Yes  
Permitted: Yes  
Wet space: No  
Addition: No  
Conversion: No

358 Keesling Avenue Northwest, Beverly Heights, Salem, Salem city, Virginia, United States, 24153

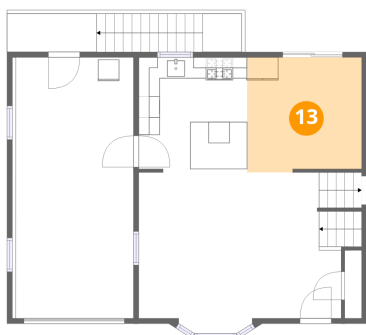
**12** Floor 3 - Outdoor



Dimensions: 8'5" x 3'8"  
Area: 80 sq. ft  
Counted as living area: No

Heated: No  
Finished: No  
Enclosed: No  
Contiguous: Yes  
Permitted: No  
Wet space: No  
Addition: No  
Conversion: No

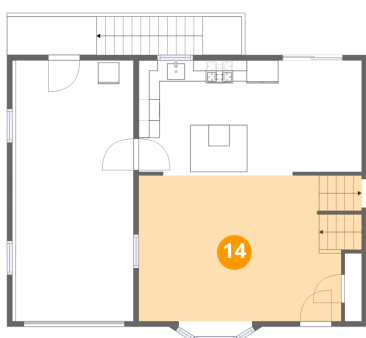
**13** Floor 3 - Dining Area



Dimensions: 10'10" x 10'10"  
Area: 115 sq. ft  
Counted as living area: Yes

Heated: Yes  
Finished: Yes  
Enclosed: Yes  
Contiguous: Yes  
Permitted: Yes  
Wet space: No  
Addition: No  
Conversion: No

**14** Floor 3 - Living Room

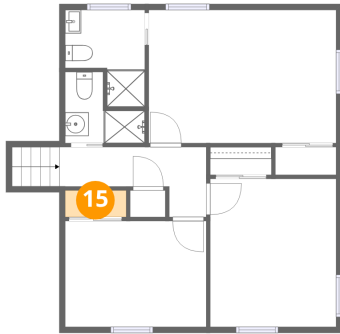


Dimensions: 19'1" x 13'9"  
Area: 275 sq. ft  
Counted as living area: Yes

Heated: Yes  
Finished: Yes  
Enclosed: Yes  
Contiguous: Yes  
Permitted: Yes  
Wet space: No  
Addition: No  
Conversion: No

358 Keesling Avenue Northwest, Beverly Heights, Salem, Salem city, Virginia, United States, 24153

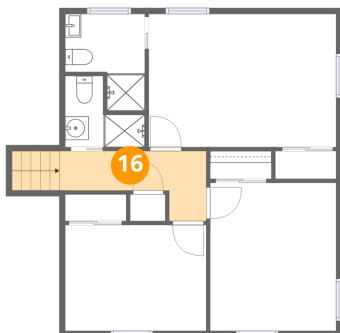
**15** Floor 4 - W.I.C.



Dimensions: 5'2" x 2'3"  
Area: 12 sq. ft  
Counted as living area: Yes

Heated: Yes  
Finished: Yes  
Enclosed: Yes  
Contiguous: Yes  
Permitted: Yes  
Wet space: No  
Addition: No  
Conversion: No

**16** Floor 4 - Hall



Dimensions: 12'6" x 5'11"  
Area: 63 sq. ft  
Counted as living area: Yes

Heated: Yes  
Finished: Yes  
Enclosed: Yes  
Contiguous: Yes  
Permitted: Yes  
Wet space: No  
Addition: No  
Conversion: No

**17** Floor 4 - W.I.C.



Dimensions: 5'2" x 2'4"  
Area: 12 sq. ft  
Counted as living area: Yes

Heated: Yes  
Finished: Yes  
Enclosed: Yes  
Contiguous: Yes  
Permitted: Yes  
Wet space: No  
Addition: No  
Conversion: No

358 Keesling Avenue Northwest, Beverly Heights, Salem, Salem city, Virginia, United States, 24153

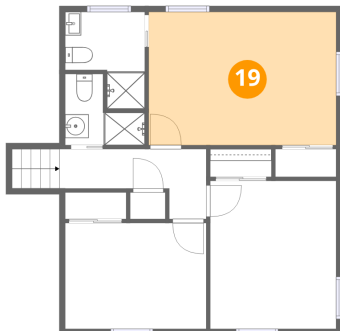
**18** Floor 4 - Bedroom



Dimensions: 12'0" x 9'0"  
Area: 107 sq. ft  
Counted as living area: Yes

Heated: Yes  
Finished: Yes  
Enclosed: Yes  
Contiguous: Yes  
Permitted: Yes  
Wet space: No  
Addition: No  
Conversion: No

**19** Floor 4 - Primary Bedroom



Dimensions: 15'11" x 11'3"  
Area: 180 sq. ft  
Counted as living area: Yes

Heated: Yes  
Finished: Yes  
Enclosed: Yes  
Contiguous: Yes  
Permitted: Yes  
Wet space: No  
Addition: No  
Conversion: No

**20** Floor 4 - Bath



Dimensions: 6'9" x 6'0"  
Area: 29 sq. ft  
Counted as living area: Yes

Heated: Yes  
Finished: Yes  
Enclosed: Yes  
Contiguous: Yes  
Permitted: Yes  
Wet space: Yes  
Addition: No  
Conversion: No

358 Keesling Avenue Northwest, Beverly Heights, Salem, Salem city, Virginia, United States, 24153

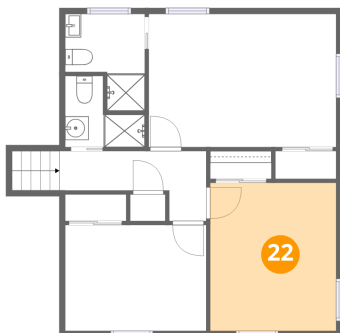
**21** Floor 4 - Bath



Dimensions: 6'9" x 8'2"  
Area: 44 sq. ft  
Counted as living area: Yes

Heated: Yes  
Finished: Yes  
Enclosed: Yes  
Contiguous: Yes  
Permitted: Yes  
Wet space: Yes  
Addition: No  
Conversion: No

**22** Floor 4 - Bedroom



Dimensions: 10'8" x 12'7"  
Area: 134 sq. ft  
Counted as living area: Yes

Heated: Yes  
Finished: Yes  
Enclosed: Yes  
Contiguous: Yes  
Permitted: Yes  
Wet space: No  
Addition: No  
Conversion: No