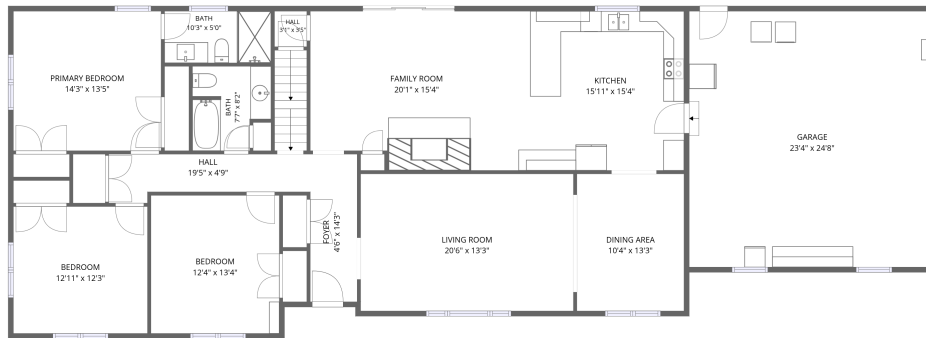
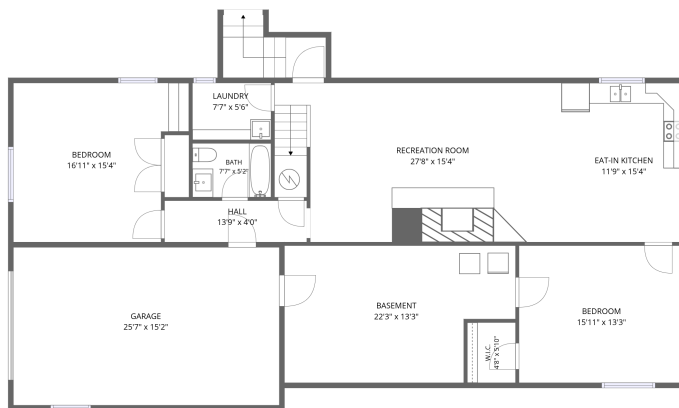


Home data report

3304 Timberlake Dr SW, Knoxville, TN, US



2nd floor



1st floor

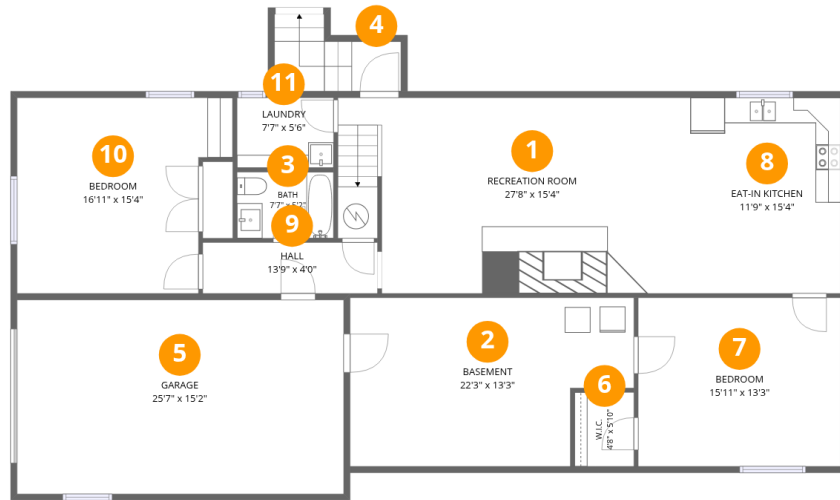
Total Area: 3166 sq. ft

1st Floor: 1250 sq. ft, 2nd Floor: 1916 sq. ft

Excluded: Garage 966 sq. ft, Basement 264 sq. ft, Walls: 248 sq. ft

Property summary





Room dimensions

Floor 1

Total: 1250sqft

Excluded: 654sqft

#		Dimensions	sqft	Counted as living area
1	Recreation Room	27'8" x 15'4"	408 sq. ft	Yes
2	Basement	22'3" x 13'3"	264 sq. ft	No
3	Bath	7'7" x 5'2"	39 sq. ft	Yes
4	Outdoor	3'10" x 3'10"	47 sq. ft	No
5	Garage	25'7" x 15'2"	390 sq. ft	No
6	W.I.C.	4'8" x 5'10"	27 sq. ft	Yes
7	Bedroom	15'11" x 13'3"	210 sq. ft	Yes
8	Eat-in Kitchen	11'9" x 15'4"	181 sq. ft	Yes
9	Hall	13'9" x 4'0"	55 sq. ft	Yes
10	Bedroom	16'11" x 15'4"	231 sq. ft	Yes
11	Laundry	7'7" x 5'6"	42 sq. ft	Yes



Room dimensions

Floor 2

Total: 1916 sqft

Excluded: 576 sqft

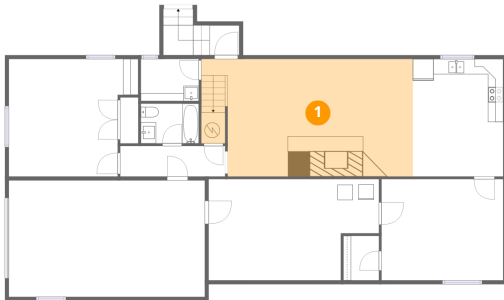
#		Dimensions	sqft	Counted as living area
12	Hall	19'5" x 4'9"	75 sq. ft	Yes
13	Family Room	20'1" x 15'4"	294 sq. ft	Yes
14	Dining Area	10'4" x 13'3"	136 sq. ft	Yes
15	Bedroom	12'4" x 13'4"	165 sq. ft	Yes
16	Bedroom	12'11" x 12'3"	158 sq. ft	Yes
17	Garage	23'4" x 24'8"	576 sq. ft	No
18	Living Room	20'6" x 13'3"	271 sq. ft	Yes
19	Primary Bedroom	14'3" x 13'5"	191 sq. ft	Yes
20	Bath	10'3" x 5'0"	51 sq. ft	Yes
21	Bath	7'7" x 8'2"	54 sq. ft	Yes
22	Hall	3'1" x 3'5"	11 sq. ft	Yes

Home data report

3304 Timberlake Dr SW,Knoxville,TN,US

#		Dimensions	sqft	Counted as living area
23	Foyer	4'6" x 14'3"	64 sq. ft	Yes
24	Kitchen	15'11" x 15'4"	244 sq. ft	Yes

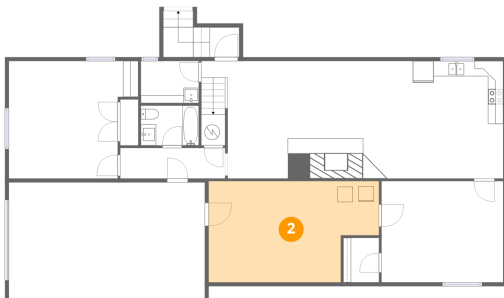
1 Floor 1 - Recreation Room



Dimensions: 27'8" x 15'4"
Area: 408 sq. ft
Counted as living area: Yes

Heated: Yes
Finished: Yes
Enclosed: Yes
Contiguous: Yes
Permitted: Yes
Wet space: No
Addition: No
Conversion: No

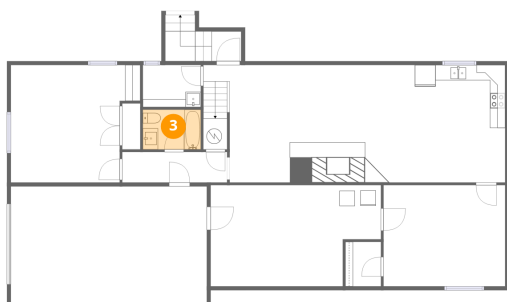
2 Floor 1 - Basement



Dimensions: 22'3" x 13'3"
Area: 264 sq. ft
Counted as living area: No

Heated: Yes
Finished: No
Enclosed: Yes
Contiguous: Yes
Permitted: Yes
Wet space: No
Addition: No
Conversion: No

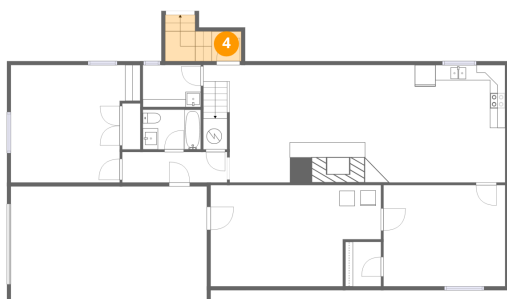
3 Floor 1 - Bath



Dimensions: 7'7" x 5'2"
Area: 39 sq. ft
Counted as living area: Yes

Heated: Yes
Finished: Yes
Enclosed: Yes
Contiguous: Yes
Permitted: Yes
Wet space: Yes
Addition: No
Conversion: No

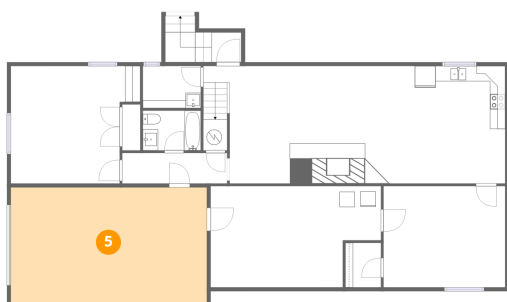
4 Floor 1 - Outdoor



Dimensions: 3'10" x 3'10"
Area: 47 sq. ft
Counted as living area: No

Heated: No
Finished: No
Enclosed: No
Contiguous: Yes
Permitted: No
Wet space: No
Addition: No
Conversion: No

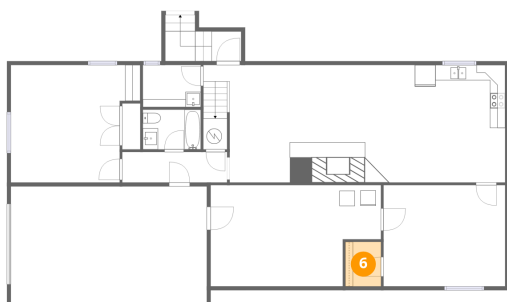
5 Floor 1 - Garage



Dimensions: 25'7" x 15'2"
Area: 390 sq. ft
Counted as living area: No

Heated: No
Finished: No
Enclosed: Yes
Contiguous: Yes
Permitted: Yes
Wet space: No
Addition: No
Conversion: No

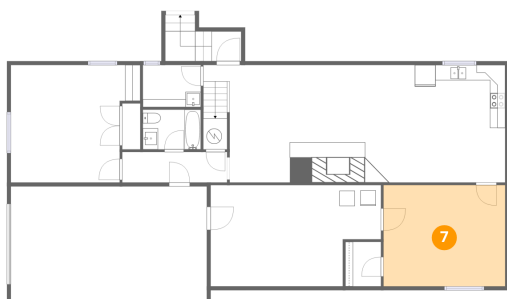
6 Floor 1 - W.I.C.



Dimensions: 4'8" x 5'10"
Area: 27 sq. ft
Counted as living area: Yes

Heated: Yes
Finished: Yes
Enclosed: Yes
Contiguous: Yes
Permitted: Yes
Wet space: No
Addition: No
Conversion: No

7 Floor 1 - Bedroom



Dimensions: 15'11" x 13'3"
Area: 210 sq. ft
Counted as living area: Yes

Heated: Yes
Finished: Yes
Enclosed: Yes
Contiguous: Yes
Permitted: Yes
Wet space: No
Addition: No
Conversion: No

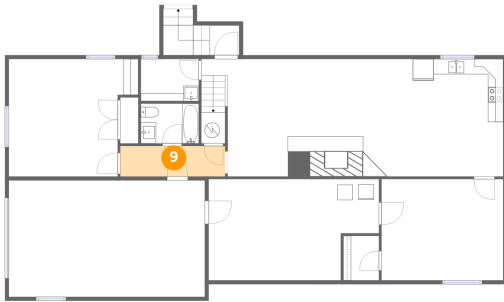
8 Floor 1 - Eat-in Kitchen



Dimensions: 11'9" x 15'4"
Area: 181 sq. ft
Counted as living area: Yes

Heated: Yes
Finished: Yes
Enclosed: Yes
Contiguous: Yes
Permitted: Yes
Wet space: No
Addition: No
Conversion: No

9 Floor 1 - Hall



Dimensions: 13'9" x 4'0"
Area: 55 sq. ft
Counted as living area: Yes

Heated: Yes
Finished: Yes
Enclosed: Yes
Contiguous: Yes
Permitted: Yes
Wet space: No
Addition: No
Conversion: No

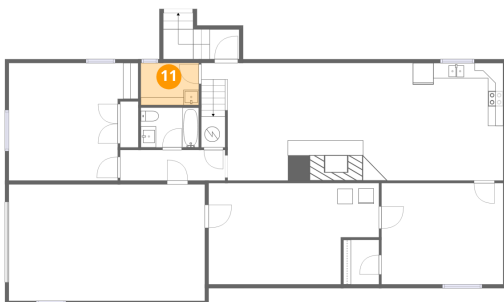
10 Floor 1 - Bedroom



Dimensions: 16'11" x 15'4"
Area: 231 sq. ft
Counted as living area: Yes

Heated: Yes
Finished: Yes
Enclosed: Yes
Contiguous: Yes
Permitted: Yes
Wet space: No
Addition: No
Conversion: No

11 Floor 1 - Laundry



Dimensions: 7'7" x 5'6"
Area: 42 sq. ft
Counted as living area: Yes

Heated: Yes
Finished: Yes
Enclosed: Yes
Contiguous: Yes
Permitted: Yes
Wet space: No
Addition: No
Conversion: No

12 Floor 2 - Hall



Dimensions: 19'5" x 4'9"
Area: 75 sq. ft
Counted as living area: Yes

Heated: Yes
Finished: Yes
Enclosed: Yes
Contiguous: Yes
Permitted: Yes
Wet space: No
Addition: No
Conversion: No

13 Floor 2 - Family Room



Dimensions: 20'1" x 15'4"
Area: 294 sq. ft
Counted as living area: Yes

Heated: Yes
Finished: Yes
Enclosed: Yes
Contiguous: Yes
Permitted: Yes
Wet space: No
Addition: No
Conversion: No

14 Floor 2 - Dining Area



Dimensions: 10'4" x 13'3"
Area: 136 sq. ft
Counted as living area: Yes

Heated: Yes
Finished: Yes
Enclosed: Yes
Contiguous: Yes
Permitted: Yes
Wet space: No
Addition: No
Conversion: No

15 Floor 2 - Bedroom



Dimensions: 12'4" x 13'4"
Area: 165 sq. ft
Counted as living area: Yes

Heated: Yes
Finished: Yes
Enclosed: Yes
Contiguous: Yes
Permitted: Yes
Wet space: No
Addition: No
Conversion: No

16 Floor 2 - Bedroom



Dimensions: 12'11" x 12'3"
Area: 158 sq. ft
Counted as living area: Yes

Heated: Yes
Finished: Yes
Enclosed: Yes
Contiguous: Yes
Permitted: Yes
Wet space: No
Addition: No
Conversion: No

17 Floor 2 - Garage



Dimensions: 23'4" x 24'8"
Area: 576 sq. ft
Counted as living area: No

Heated: No
Finished: No
Enclosed: Yes
Contiguous: Yes
Permitted: Yes
Wet space: No
Addition: No
Conversion: No

18 Floor 2 - Living Room



Dimensions: 20'6" x 13'3"
Area: 271 sq. ft
Counted as living area: Yes

Heated: Yes
Finished: Yes
Enclosed: Yes
Contiguous: Yes
Permitted: Yes
Wet space: No
Addition: No
Conversion: No

19 Floor 2 - Primary Bedroom



Dimensions: 14'3" x 13'5"
Area: 191 sq. ft
Counted as living area: Yes

Heated: Yes
Finished: Yes
Enclosed: Yes
Contiguous: Yes
Permitted: Yes
Wet space: No
Addition: No
Conversion: No

20 Floor 2 - Bath



Dimensions: 10'3" x 5'0"
Area: 51 sq. ft
Counted as living area: Yes

Heated: Yes
Finished: Yes
Enclosed: Yes
Contiguous: Yes
Permitted: Yes
Wet space: Yes
Addition: No
Conversion: No

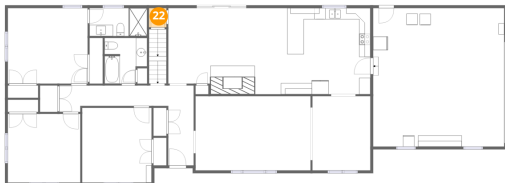
21 Floor 2 - Bath



Dimensions: 7'7" x 8'2"
Area: 54 sq. ft
Counted as living area: Yes

Heated: Yes
Finished: Yes
Enclosed: Yes
Contiguous: Yes
Permitted: Yes
Wet space: Yes
Addition: No
Conversion: No

22 Floor 2 - Hall



Dimensions: 3'1" x 3'5"
Area: 11 sq. ft
Counted as living area: Yes

Heated: Yes
Finished: Yes
Enclosed: Yes
Contiguous: Yes
Permitted: Yes
Wet space: No
Addition: No
Conversion: No

23 Floor 2 - Foyer



Dimensions: 4'6" x 14'3"
Area: 64 sq. ft
Counted as living area: Yes

Heated: Yes
Finished: Yes
Enclosed: Yes
Contiguous: Yes
Permitted: Yes
Wet space: No
Addition: No
Conversion: No

24 Floor 2 - Kitchen



Dimensions: 15'11" x 15'4"
Area: 244 sq. ft
Counted as living area: Yes

Heated: Yes
Finished: Yes
Enclosed: Yes
Contiguous: Yes
Permitted: Yes
Wet space: No
Addition: No
Conversion: No