

1st floor

**Total Area: 1079 sq. ft**

1st Floor: 1079 sq. ft

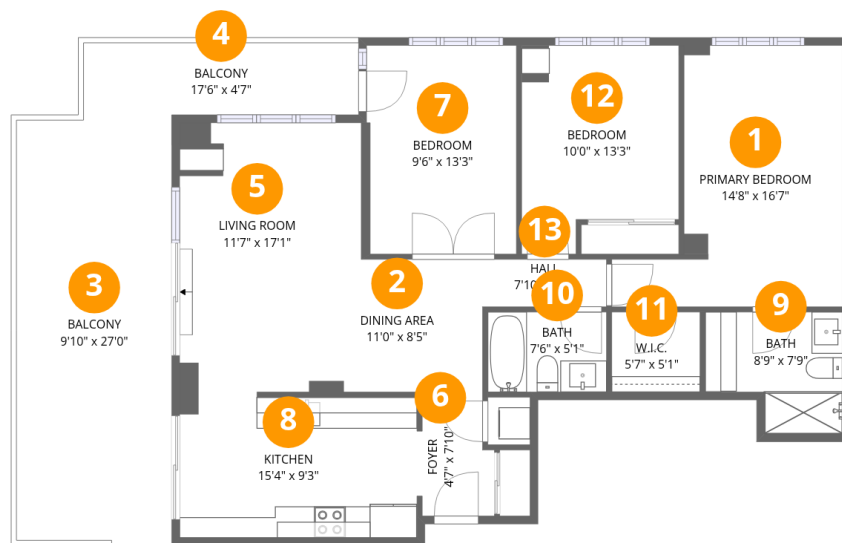
Excluded: Balcony 345 sq. ft, Walls: 0 sq. ft

### Property summary

 **1** Floors

 **3** Bedrooms

 **2** Bathrooms



## Room dimensions

Floor 1

Total: 1079sqft Excluded: 345sqft

#		Dimensions	sqft	Counted as living area
1	Primary Bedroom	14'8" x 16'7"	181 sq. ft	Yes
2	Dining Area	11'0" x 8'5"	93 sq. ft	Yes
3	Balcony	9'10" x 27'0"	265 sq. ft	No
4	Balcony	17'6" x 4'7"	80 sq. ft	No
5	Living Room	11'7" x 17'1"	167 sq. ft	Yes
6	Foyer	4'7" x 7'10"	33 sq. ft	Yes
7	Bedroom	9'6" x 13'3"	124 sq. ft	Yes
8	Kitchen	15'4" x 9'3"	142 sq. ft	Yes
9	Bath	8'9" x 7'9"	58 sq. ft	Yes
10	Bath	7'6" x 5'1"	38 sq. ft	Yes
11	W.I.C.	5'7" x 5'1"	28 sq. ft	Yes

**335 Rathburn Rd W,#2212,Mississauga,ON,Canada,  
#2212**



#		Dimensions	sqft	Counted as living area
12	Bedroom	10'0" x 13'3"	118 sq. ft	Yes
13	Hall	7'10" x 3'0"	24 sq. ft	Yes

## 1 Floor 1 - Primary Bedroom



Dimensions: 14'8" x 16'7"  
Area: 181 sq. ft  
Counted as living area: Yes

Heated: Yes  
Finished: Yes  
Enclosed: Yes  
Contiguous: Yes  
Permitted: Yes  
Wet space: No  
Addition: No  
Conversion: No

## 2 Floor 1 - Dining Area



Dimensions: 11'0" x 8'5"  
Area: 93 sq. ft  
Counted as living area: Yes

Heated: Yes  
Finished: Yes  
Enclosed: Yes  
Contiguous: Yes  
Permitted: Yes  
Wet space: No  
Addition: No  
Conversion: No

### 3 Floor 1 - Balcony



Dimensions: 9'10" x 27'0"  
Area: 265 sq. ft  
Counted as living area: No

Heated: No  
Finished: No  
Enclosed: No  
Contiguous: Yes  
Permitted: Yes  
Wet space: No  
Addition: No  
Conversion: No

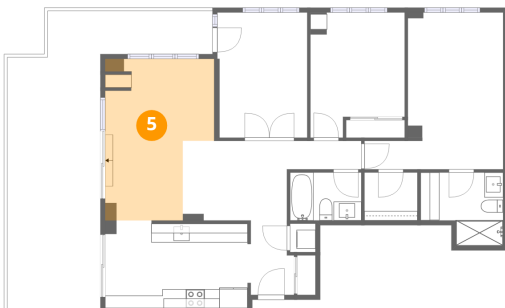
### 4 Floor 1 - Balcony



Dimensions: 17'6" x 4'7"  
Area: 80 sq. ft  
Counted as living area: No

Heated: No  
Finished: No  
Enclosed: No  
Contiguous: Yes  
Permitted: Yes  
Wet space: No  
Addition: No  
Conversion: No

### 5 Floor 1 - Living Room



Dimensions: 11'7" x 17'1"  
Area: 167 sq. ft  
Counted as living area: Yes

Heated: Yes  
Finished: Yes  
Enclosed: Yes  
Contiguous: Yes  
Permitted: Yes  
Wet space: No  
Addition: No  
Conversion: No

## 6 Floor 1 - Foyer



Dimensions: 4'7" x 7'10"  
Area: 33 sq. ft  
Counted as living area: Yes

Heated: Yes  
Finished: Yes  
Enclosed: Yes  
Contiguous: Yes  
Permitted: Yes  
Wet space: No  
Addition: No  
Conversion: No

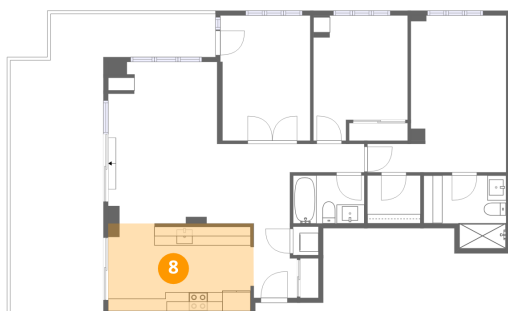
## 7 Floor 1 - Bedroom



Dimensions: 9'6" x 13'3"  
Area: 124 sq. ft  
Counted as living area: Yes

Heated: Yes  
Finished: Yes  
Enclosed: Yes  
Contiguous: Yes  
Permitted: Yes  
Wet space: No  
Addition: No  
Conversion: No

## 8 Floor 1 - Kitchen



Dimensions: 15'4" x 9'3"  
Area: 142 sq. ft  
Counted as living area: Yes

Heated: Yes  
Finished: Yes  
Enclosed: Yes  
Contiguous: Yes  
Permitted: Yes  
Wet space: No  
Addition: No  
Conversion: No

**9 Floor 1 - Bath**



Dimensions: 8'9" x 7'9"  
Area: 58 sq. ft  
Counted as living area: Yes

Heated: Yes  
Finished: Yes  
Enclosed: Yes  
Contiguous: Yes  
Permitted: Yes  
Wet space: Yes  
Addition: No  
Conversion: No

**10 Floor 1 - Bath**



Dimensions: 7'6" x 5'1"  
Area: 38 sq. ft  
Counted as living area: Yes

Heated: Yes  
Finished: Yes  
Enclosed: Yes  
Contiguous: Yes  
Permitted: Yes  
Wet space: Yes  
Addition: No  
Conversion: No

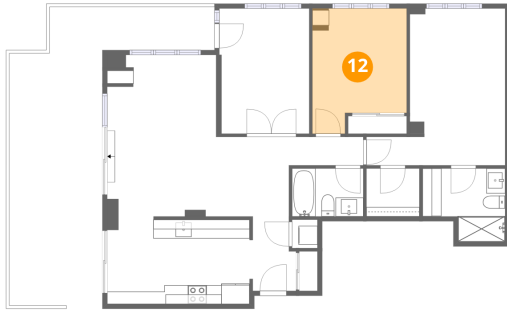
**11 Floor 1 - W.I.C.**



Dimensions: 5'7" x 5'1"  
Area: 28 sq. ft  
Counted as living area: Yes

Heated: Yes  
Finished: Yes  
Enclosed: Yes  
Contiguous: Yes  
Permitted: Yes  
Wet space: No  
Addition: No  
Conversion: No

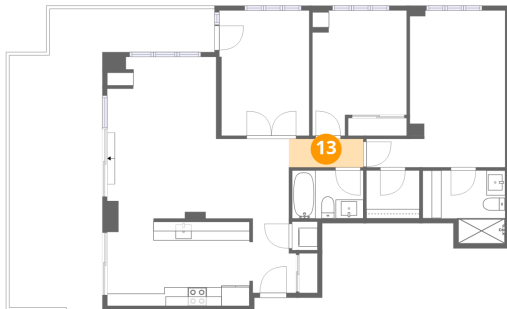
## 12 Floor 1 - Bedroom



Dimensions: 10'0" x 13'3"  
Area: 118 sq. ft  
Counted as living area: Yes

Heated: Yes  
Finished: Yes  
Enclosed: Yes  
Contiguous: Yes  
Permitted: Yes  
Wet space: No  
Addition: No  
Conversion: No

## 13 Floor 1 - Hall



Dimensions: 7'10" x 3'0"  
Area: 24 sq. ft  
Counted as living area: Yes

Heated: Yes  
Finished: Yes  
Enclosed: Yes  
Contiguous: Yes  
Permitted: Yes  
Wet space: No  
Addition: No  
Conversion: No