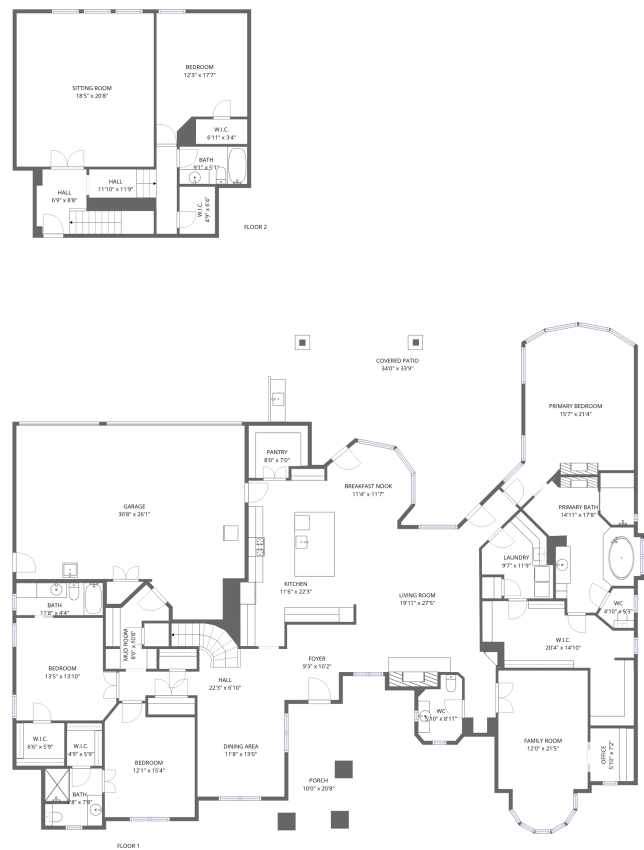


Home report

2317 Highgate Drive, Eldorado, McKinney, Collin County, Texas,
United States, 75070



Total Area: 3921 sq. ft

Floor 1: 3093 sq. ft, Floor 2: 828 sq. ft

Excluded: Garage 676 sq. ft, Porch 185 sq. ft, Covered patio 894 sq. ft, Low ceiling 38 sq. ft, Walls: 276 sq. ft

Property summary

**2**
Floors

**4**
Bedrooms

**4**
Bathrooms

Home report

**2317 Highgate Drive, Eldorado, McKinney, Collin County, Texas,
United States, 75070**



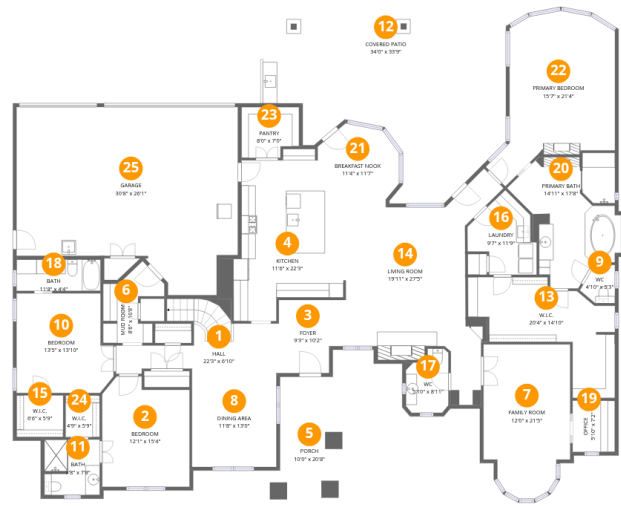
1
Half baths



1
Garages

Home report

2317 Highgate Drive, Eldorado, McKinney, Collin County, Texas,
United States, 75070



Room dimensions

Floor 1

Total:3093sqft

Excluded: 1755sqft

#		Max Dimensions	sqft	Included
1	Hall	22'3" x 6'10"	146 sq. ft	Yes
2	Bedroom	12'1" x 15'4"	171 sq. ft	Yes
3	Foyer	9'3" x 10'2"	85 sq. ft	Yes
4	Kitchen	11'6" x 22'3"	293 sq. ft	Yes
5	Porch	10'0" x 20'8"	185 sq. ft	No
6	Mud Room	8'6" x 10'8"	61 sq. ft	Yes
7	Family Room	12'0" x 21'5"	230 sq. ft	Yes
8	Dining Area	11'8" x 13'0"	152 sq. ft	Yes
9	WC	4'10" x 5'3"	20 sq. ft	Yes
10	Bedroom	13'5" x 13'10"	171 sq. ft	Yes
11	Bath	7'8" x 7'8"	58 sq. ft	Yes

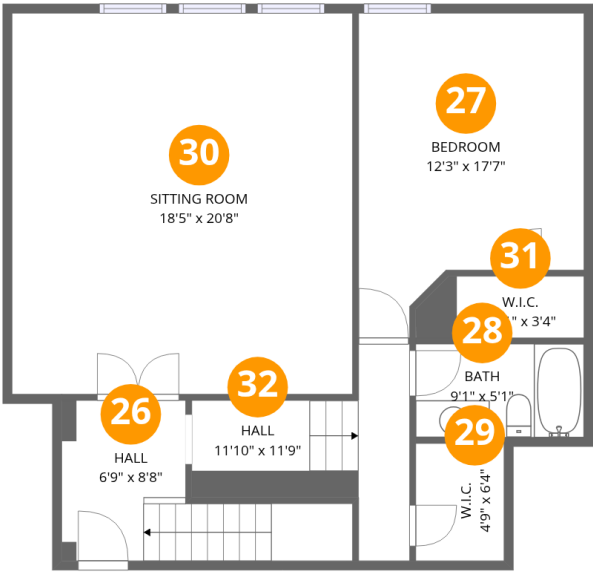
Home report

**2317 Highgate Drive, Eldorado, McKinney, Collin County, Texas,
United States, 75070**

#		Max Dimensions	sqft	Included
12	Covered Patio	34'0" x 33'9"	894 sq. ft	No
13	W.I.C.	20'4" x 14'10"	192 sq. ft	Yes
14	Living Room	19'11" x 27'5"	383 sq. ft	Yes
15	W.I.C.	6'6" x 5'9"	37 sq. ft	Yes
16	Laundry	9'7" x 11'9"	77 sq. ft	Yes
17	WC	5'10" x 8'11"	46 sq. ft	Yes
18	Bath	11'8" x 4'4"	51 sq. ft	Yes
19	Office	5'10" x 7'2"	42 sq. ft	Yes
20	Primary Bath	14'11" x 17'8"	201 sq. ft	Yes
21	Breakfast Nook	11'4" x 11'7"	110 sq. ft	Yes
22	Primary Bedroom	15'7" x 21'4"	293 sq. ft	Yes
23	Pantry	8'0" x 7'0"	52 sq. ft	Yes
24	W.I.C.	4'9" x 5'9"	27 sq. ft	Yes
25	Garage	30'8" x 26'1"	676 sq. ft	No

Home report

2317 Highgate Drive, Eldorado, McKinney, Collin County, Texas,
United States, 75070

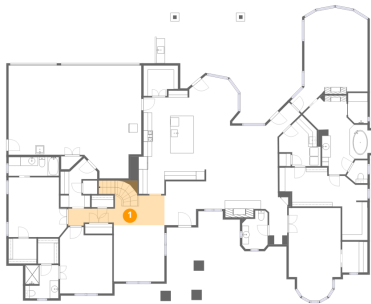


Room dimensions

Floor 2 Total:828sqft Excluded: 38sqft

#		Max Dimensions	sqft	Included
26	Hall	6'9" x 8'8"	86 sq. ft	Yes
27	Bedroom	12'3" x 17'7"	182 sq. ft	Yes
28	Bath	9'1" x 5'1"	46 sq. ft	Yes
29	W.I.C.	4'9" x 6'4"	30 sq. ft	Yes
30	Sitting Room	18'5" x 20'8"	343 sq. ft	Yes
31	W.I.C.	6'11" x 3'4"	29 sq. ft	Yes
32	Hall	11'10" x 11'9"	80 sq. ft	Yes

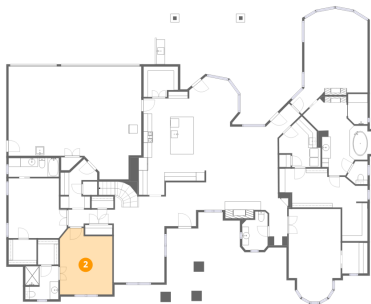
1 Floor 1 - Hall



Max Dimensions: 22'3" x 6'10"
Calculated Area: 146 sq. ft
Included: Yes

Heated: Yes
Finished: Yes
Enclosed: Yes
Contiguous: Yes
Permitted: Yes
Wet space: No
Addition: No
Conversion: No

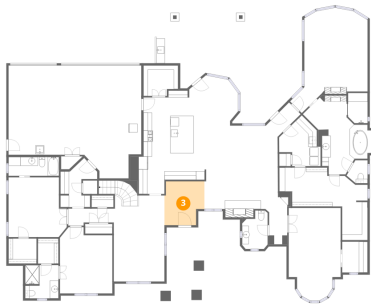
2 Floor 1 - Bedroom



Max Dimensions: 12'1" x 15'4"
Calculated Area: 171 sq. ft
Included: Yes

Heated: Yes
Finished: Yes
Enclosed: Yes
Contiguous: Yes
Permitted: Yes
Wet space: No
Addition: No
Conversion: No

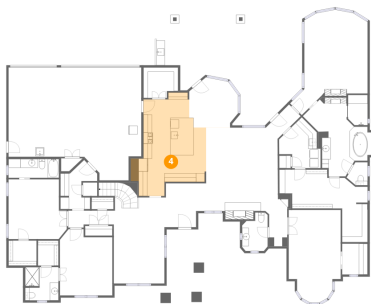
3 Floor 1 - Foyer



Max Dimensions: 9'3" x 10'2"
Calculated Area: 85 sq. ft
Included: Yes

Heated: Yes
Finished: Yes
Enclosed: Yes
Contiguous: Yes
Permitted: Yes
Wet space: No
Addition: No
Conversion: No

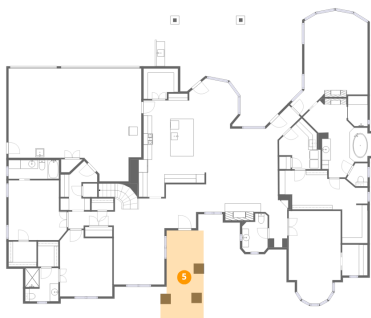
4 Floor 1 - Kitchen



Max Dimensions: 11'6" x 22'3"
Calculated Area: 293 sq. ft
Included: Yes

Heated: Yes
Finished: Yes
Enclosed: Yes
Contiguous: Yes
Permitted: Yes
Wet space: No
Addition: No
Conversion: No

5 Floor 1 - Porch

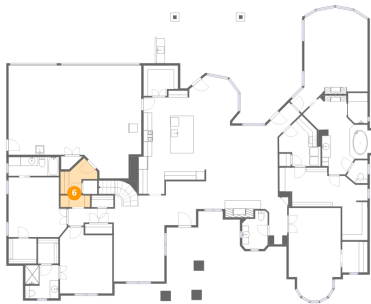


Max Dimensions: 10'0" x 20'8"
Calculated Area: 185 sq. ft
Included: No

Heated: No
Finished: No
Enclosed: No
Contiguous: Yes
Permitted: Yes
Wet space: No
Addition: No
Conversion: No

2317 Highgate Drive, Eldorado, McKinney, Collin County, Texas,
United States, 75070

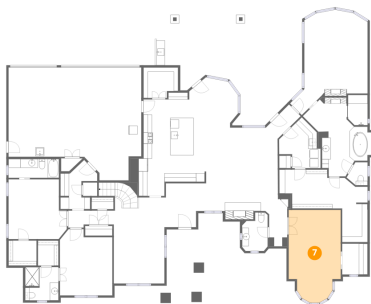
6 Floor 1 - Mud Room



Max Dimensions: 8'6" x 10'8"
Calculated Area: 61 sq. ft
Included: Yes

Heated: Yes
Finished: Yes
Enclosed: Yes
Contiguous: Yes
Permitted: Yes
Wet space: No
Addition: No
Conversion: No

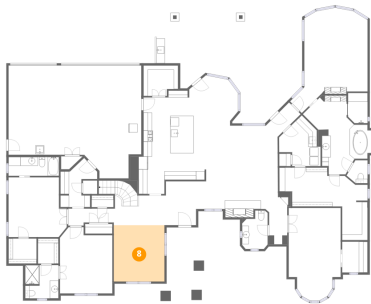
7 Floor 1 - Family Room



Max Dimensions: 12'0" x 21'5"
Calculated Area: 230 sq. ft
Included: Yes

Heated: Yes
Finished: Yes
Enclosed: Yes
Contiguous: Yes
Permitted: Yes
Wet space: No
Addition: No
Conversion: No

8 Floor 1 - Dining Area

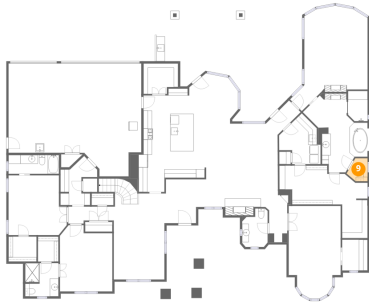


Max Dimensions: 11'8" x 13'0"
Calculated Area: 152 sq. ft
Included: Yes

Heated: Yes
Finished: Yes
Enclosed: Yes
Contiguous: Yes
Permitted: Yes
Wet space: No
Addition: No
Conversion: No

2317 Highgate Drive, Eldorado, McKinney, Collin County, Texas,
United States, 75070

9 Floor 1 - WC



Max Dimensions: 4'10" x 5'3"
Calculated Area: 20 sq. ft
Included: Yes

Heated: Yes
Finished: Yes
Enclosed: Yes
Contiguous: Yes
Permitted: Yes
Wet space: Yes
Addition: No
Conversion: No

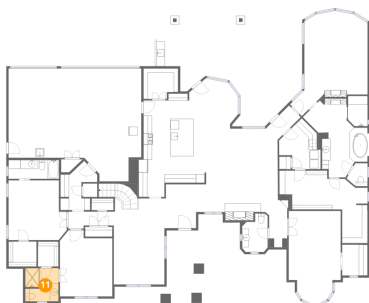
10 Floor 1 - Bedroom



Max Dimensions: 13'5" x 13'10"
Calculated Area: 171 sq. ft
Included: Yes

Heated: Yes
Finished: Yes
Enclosed: Yes
Contiguous: Yes
Permitted: Yes
Wet space: No
Addition: No
Conversion: No

11 Floor 1 - Bath

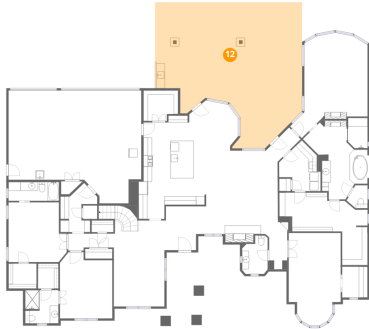


Max Dimensions: 7'8" x 7'8"
Calculated Area: 58 sq. ft
Included: Yes

Heated: Yes
Finished: Yes
Enclosed: Yes
Contiguous: Yes
Permitted: Yes
Wet space: Yes
Addition: No
Conversion: No

2317 Highgate Drive, Eldorado, McKinney, Collin County, Texas,
United States, 75070

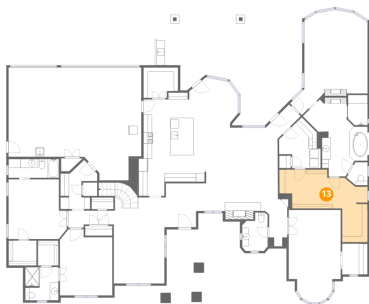
12 Floor 1 - Covered Patio



Max Dimensions: 34'0" x 33'9"
Calculated Area: 894 sq. ft
Included: No

Heated: No
Finished: No
Enclosed: No
Contiguous: Yes
Permitted: Yes
Wet space: No
Addition: No
Conversion: No

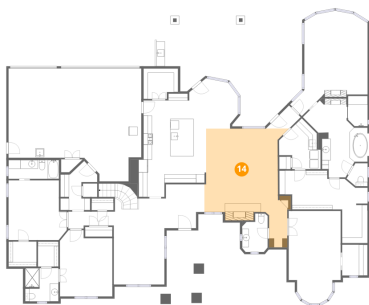
13 Floor 1 - W.I.C.



Max Dimensions: 20'4" x 14'10"
Calculated Area: 192 sq. ft
Included: Yes

Heated: Yes
Finished: Yes
Enclosed: Yes
Contiguous: Yes
Permitted: Yes
Wet space: No
Addition: No
Conversion: No

14 Floor 1 - Living Room



Max Dimensions: 19'11" x 27'5"
Calculated Area: 383 sq. ft
Included: Yes

Heated: Yes
Finished: Yes
Enclosed: Yes
Contiguous: Yes
Permitted: Yes
Wet space: No
Addition: No
Conversion: No

2317 Highgate Drive, Eldorado, McKinney, Collin County, Texas,
United States, 75070

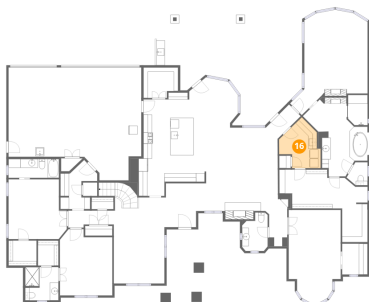
15 Floor 1 - W.I.C.



Max Dimensions: 6'6" x 5'9"
Calculated Area: 37 sq. ft
Included: Yes

Heated: Yes
Finished: Yes
Enclosed: Yes
Contiguous: Yes
Permitted: Yes
Wet space: No
Addition: No
Conversion: No

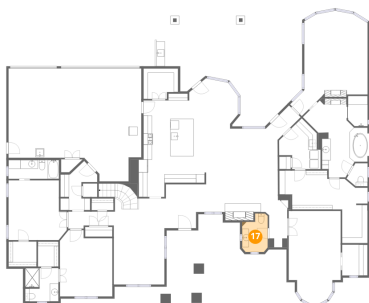
16 Floor 1 - Laundry



Max Dimensions: 9'7" x
11'9"
Calculated Area: 77 sq. ft
Included: Yes

Heated: Yes
Finished: Yes
Enclosed: Yes
Contiguous:
Yes
Permitted: Yes
Wet space: No
Addition: No
Conversion: No

17 Floor 1 - WC



Max Dimensions: 5'10" x
8'11"
Calculated Area: 46 sq. ft
Included: Yes

Heated: Yes
Finished: Yes
Enclosed: Yes
Contiguous:
Yes
Permitted: Yes
Wet space: Yes
Addition: No
Conversion: No

2317 Highgate Drive, Eldorado, McKinney, Collin County, Texas,
United States, 75070

18 Floor 1 - Bath



Max Dimensions: 11'8" x 4'4"
Calculated Area: 51 sq. ft
Included: Yes

Heated: Yes
Finished: Yes
Enclosed: Yes
Contiguous: Yes
Permitted: Yes
Wet space: Yes
Addition: No
Conversion: No

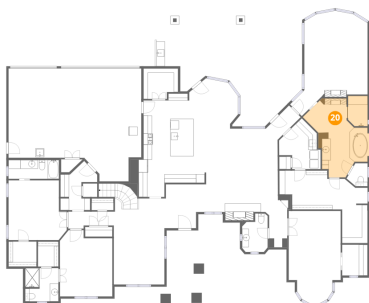
19 Floor 1 - Office



Max Dimensions: 5'10" x 7'2"
Calculated Area: 42 sq. ft
Included: Yes

Heated: Yes
Finished: Yes
Enclosed: Yes
Contiguous: Yes
Permitted: Yes
Wet space: No
Addition: No
Conversion: No

20 Floor 1 - Primary Bath

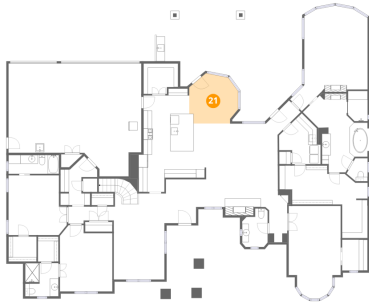


Max Dimensions: 14'11" x 17'8"
Calculated Area: 201 sq. ft
Included: Yes

Heated: Yes
Finished: Yes
Enclosed: Yes
Contiguous: Yes
Permitted: Yes
Wet space: Yes
Addition: No
Conversion: No

2317 Highgate Drive, Eldorado, McKinney, Collin County, Texas,
United States, 75070

21 Floor 1 - Breakfast Nook



Max Dimensions: 11'4" x 11'7"
Calculated Area: 110 sq. ft
Included: Yes

Heated: Yes
Finished: Yes
Enclosed: Yes
Contiguous: Yes
Permitted: Yes
Wet space: No
Addition: No
Conversion: No

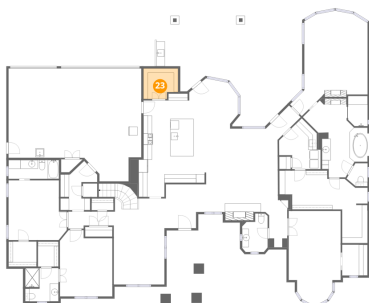
22 Floor 1 - Primary Bedroom



Max Dimensions: 15'7" x 21'4"
Calculated Area: 293 sq. ft
Included: Yes

Heated: Yes
Finished: Yes
Enclosed: Yes
Contiguous: Yes
Permitted: Yes
Wet space: No
Addition: No
Conversion: No

23 Floor 1 - Pantry



Max Dimensions: 8'0" x 7'0"
Calculated Area: 52 sq. ft
Included: Yes

Heated: Yes
Finished: Yes
Enclosed: Yes
Contiguous: Yes
Permitted: Yes
Wet space: No
Addition: No
Conversion: No

Home report

2317 Highgate Drive, Eldorado, McKinney, Collin County, Texas,
United States, 75070

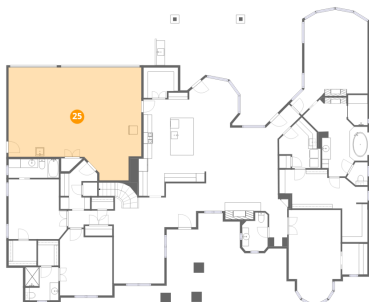
24 Floor 1 - W.I.C.



Max Dimensions: 4'9" x 5'9"
Calculated Area: 27 sq. ft
Included: Yes

Heated: Yes
Finished: Yes
Enclosed: Yes
Contiguous: Yes
Permitted: Yes
Wet space: No
Addition: No
Conversion: No

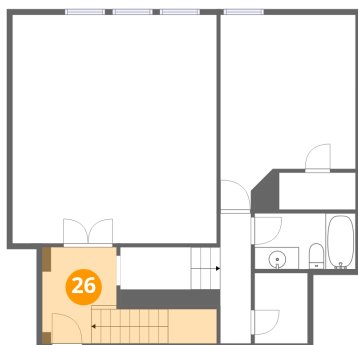
25 Floor 1 - Garage



Max Dimensions: 30'8" x 26'1"
Calculated Area: 676 sq. ft
Included: No

Heated: No
Finished: No
Enclosed: Yes
Contiguous: Yes
Permitted: Yes
Wet space: No
Addition: No
Conversion: No

26 Floor 2 - Hall

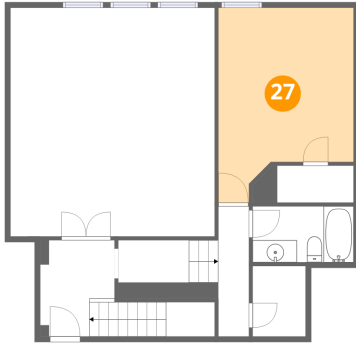


Max Dimensions: 6'9" x 8'8"
Calculated Area: 86 sq. ft
Included: Yes

Heated: Yes
Finished: Yes
Enclosed: Yes
Contiguous: Yes
Permitted: Yes
Wet space: No
Addition: No
Conversion: No

2317 Highgate Drive, Eldorado, McKinney, Collin County, Texas,
United States, 75070

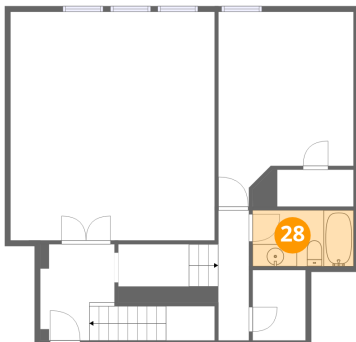
27 Floor 2 - Bedroom



Max Dimensions: 12'3" x 17'7"
Calculated Area: 182 sq. ft
Included: Yes

Heated: Yes
Finished: Yes
Enclosed: Yes
Contiguous: Yes
Permitted: Yes
Wet space: No
Addition: No
Conversion: No

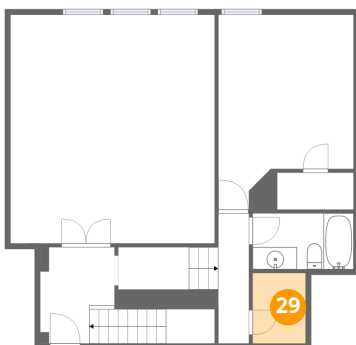
28 Floor 2 - Bath



Max Dimensions: 9'1" x 5'1"
Calculated Area: 46 sq. ft
Included: Yes

Heated: Yes
Finished: Yes
Enclosed: Yes
Contiguous: Yes
Permitted: Yes
Wet space: Yes
Addition: No
Conversion: No

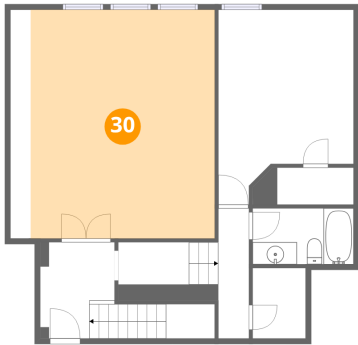
29 Floor 2 - W.I.C.



Max Dimensions: 4'9" x 6'4"
Calculated Area: 30 sq. ft
Included: Yes

Heated: Yes
Finished: Yes
Enclosed: Yes
Contiguous: Yes
Permitted: Yes
Wet space: No
Addition: No
Conversion: No

30 Floor 2 - Sitting Room



Max Dimensions: 18'5" x 20'8"
Calculated Area: 343 sq. ft
Included: Yes

Heated: Yes
Finished: Yes
Enclosed: Yes
Contiguous: Yes
Permitted: Yes
Wet space: No
Addition: No
Conversion: No

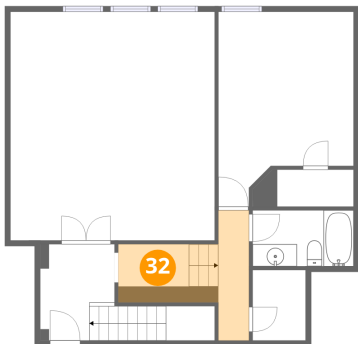
31 Floor 2 - W.I.C.



Max Dimensions: 6'11" x 3'4"
Calculated Area: 29 sq. ft
Included: Yes

Heated: Yes
Finished: Yes
Enclosed: Yes
Contiguous: Yes
Permitted: Yes
Wet space: No
Addition: No
Conversion: No

32 Floor 2 - Hall



Max Dimensions: 11'10" x 11'9"
Calculated Area: 80 sq. ft
Included: Yes

Heated: Yes
Finished: Yes
Enclosed: Yes
Contiguous: Yes
Permitted: Yes
Wet space: No
Addition: No
Conversion: No