

# Home data report

## 1766 Ruddlesway Dr, Windsor, CO, US




**Total Area: 2522 sq. ft**

Basement: 698 sq. ft, 1st Floor: 801 sq. ft, 2nd Floor: 1023 sq. ft

Excluded: Utility 71 sq. ft, Patio 221 sq. ft, Open to below 70 sq. ft, Walls: 201 sq. ft

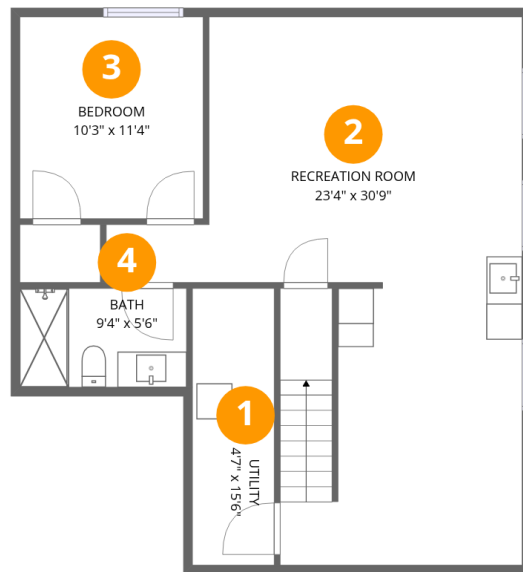
### Property summary

 **3** Floors

 **4** Bedrooms

 **3** Bathrooms

 **1** Half baths

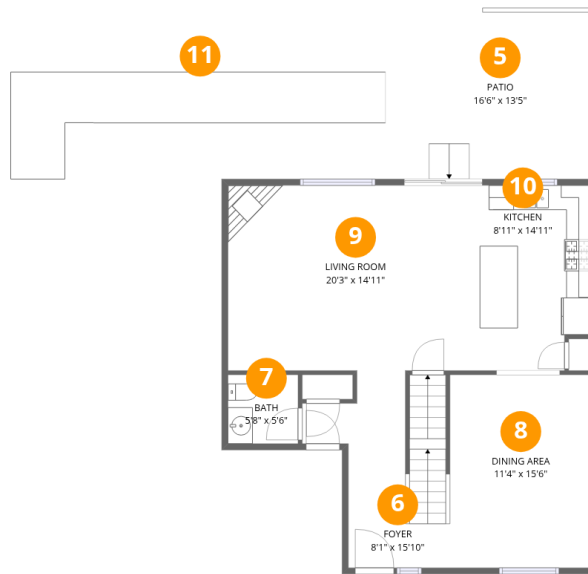


## Room dimensions

Floor 1 Below grade

Total:698sqft Excluded: 71sqft

#		Dimensions	sqft	Counted as living area
1	Utility	4'7" x 15'6"	71 sq. ft	No
2	Recreation Room	23'4" x 30'9"	716 sq. ft	Yes
3	Bedroom	10'3" x 11'4"	116 sq. ft	Yes
4	Bath	9'4" x 5'6"	52 sq. ft	Yes



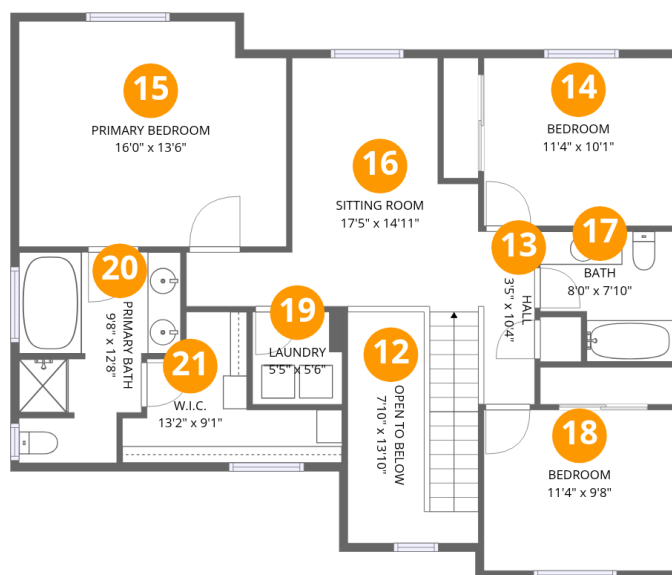
## Room dimensions

Floor 2

Total: 801 sqft

Excluded: 221 sqft

#		Dimensions	sqft	Counted as living area
5	Patio	16'6" x 13'5"	220 sq. ft	No
6	Foyer	8'1" x 15'10"	128 sq. ft	Yes
7	Bath	5'8" x 5'6"	31 sq. ft	Yes
8	Dining Area	11'4" x 15'6"	176 sq. ft	Yes
9	Living Room	20'3" x 14'11"	302 sq. ft	Yes
10	Kitchen	8'11" x 14'11"	133 sq. ft	Yes
11	Walkway	30'1" x 8'6"	257 sq. ft	No



## Room dimensions

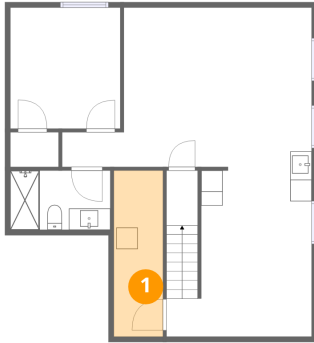
Floor 3

Total:1023sqft

Excluded: 70sqft

#		Dimensions	sqft	Counted as living area
12	Open To Below	7'10" x 13'10"	108 sq. ft	No
13	Hall	3'5" x 10'4"	35 sq. ft	Yes
14	Bedroom	11'4" x 10'1"	114 sq. ft	Yes
15	Primary Bedroom	16'0" x 13'6"	216 sq. ft	Yes
16	Sitting Room	17'5" x 14'11"	260 sq. ft	Yes
17	Bath	8'0" x 7'10"	62 sq. ft	Yes
18	Bedroom	11'4" x 9'8"	109 sq. ft	Yes
19	Laundry	5'5" x 5'6"	30 sq. ft	Yes
20	Primary Bath	9'8" x 12'8"	123 sq. ft	Yes
21	W.I.C.	13'2" x 9'1"	119 sq. ft	Yes

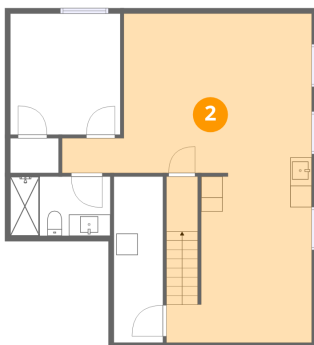
## 1 Floor 1 - Utility



Dimensions: 4'7" x 15'6"  
Area: 71 sq. ft  
Counted as living area: No

Heated: Yes  
Finished: No  
Enclosed: Yes  
Contiguous: Yes  
Permitted: Yes  
Wet space: No  
Addition: No  
Conversion: No

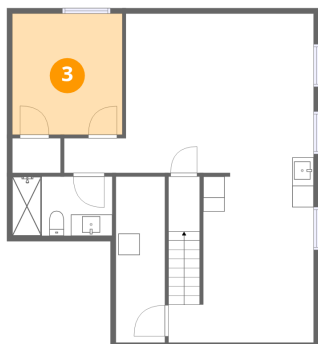
## 2 Floor 1 - Recreation Room



Dimensions: 23'4" x 30'9"  
Area: 716 sq. ft  
Counted as living area: Yes

Heated: Yes  
Finished: Yes  
Enclosed: Yes  
Contiguous: Yes  
Permitted: Yes  
Wet space: No  
Addition: No  
Conversion: No

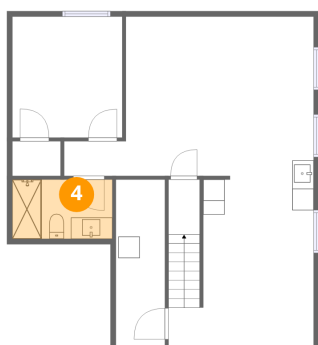
### 3 Floor 1 - Bedroom



Dimensions: 10'3" x 11'4"  
Area: 116 sq. ft  
Counted as living area: Yes

Heated: Yes  
Finished: Yes  
Enclosed: Yes  
Contiguous: Yes  
Permitted: Yes  
Wet space: No  
Addition: No  
Conversion: No

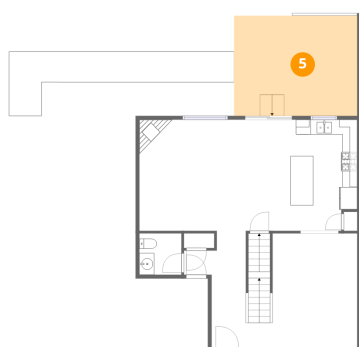
### 4 Floor 1 - Bath



Dimensions: 9'4" x 5'6"  
Area: 52 sq. ft  
Counted as living area: Yes

Heated: Yes  
Finished: Yes  
Enclosed: Yes  
Contiguous: Yes  
Permitted: Yes  
Wet space: Yes  
Addition: No  
Conversion: No

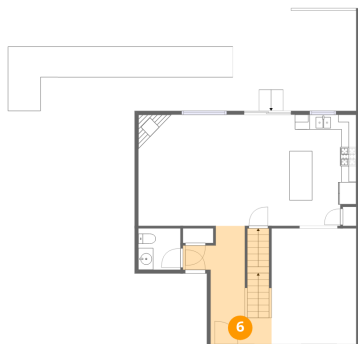
### 5 Floor 2 - Patio



Dimensions: 16'6" x 13'5"  
Area: 220 sq. ft  
Counted as living area: No

Heated: No  
Finished: No  
Enclosed: No  
Contiguous: Yes  
Permitted: Yes  
Wet space: No  
Addition: No  
Conversion: No

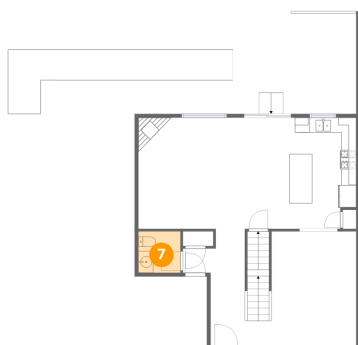
## 6 Floor 2 - Foyer



Dimensions: 8'1" x 15'10"  
Area: 128 sq. ft  
Counted as living area: Yes

Heated: Yes  
Finished: Yes  
Enclosed: Yes  
Contiguous: Yes  
Permitted: Yes  
Wet space: No  
Addition: No  
Conversion: No

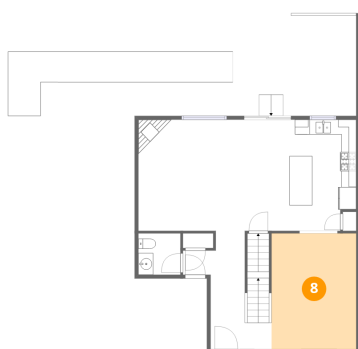
## 7 Floor 2 - Bath



Dimensions: 5'8" x 5'6"  
Area: 31 sq. ft  
Counted as living area: Yes

Heated: Yes  
Finished: Yes  
Enclosed: Yes  
Contiguous: Yes  
Permitted: Yes  
Wet space: Yes  
Addition: No  
Conversion: No

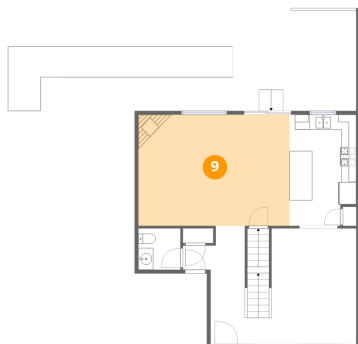
## 8 Floor 2 - Dining Area



Dimensions: 11'4" x 15'6"  
Area: 176 sq. ft  
Counted as living area: Yes

Heated: Yes  
Finished: Yes  
Enclosed: Yes  
Contiguous: Yes  
Permitted: Yes  
Wet space: No  
Addition: No  
Conversion: No

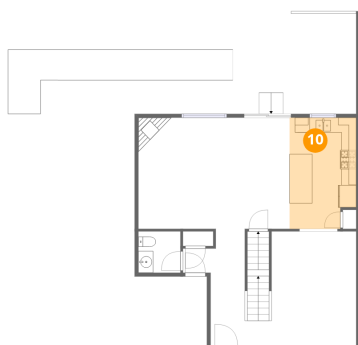
## 9 Floor 2 - Living Room



Dimensions: 20'3" x 14'11"  
Area: 302 sq. ft  
Counted as living area: Yes

Heated: Yes  
Finished: Yes  
Enclosed: Yes  
Contiguous: Yes  
Permitted: Yes  
Wet space: No  
Addition: No  
Conversion: No

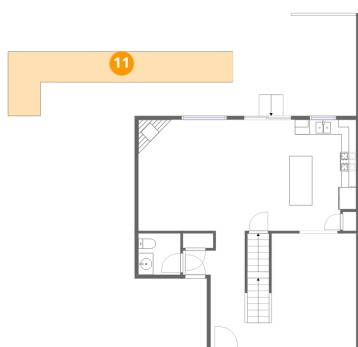
## 10 Floor 2 - Kitchen



Dimensions: 8'11" x 14'11"  
Area: 133 sq. ft  
Counted as living area: Yes

Heated: Yes  
Finished: Yes  
Enclosed: Yes  
Contiguous: Yes  
Permitted: Yes  
Wet space: No  
Addition: No  
Conversion: No

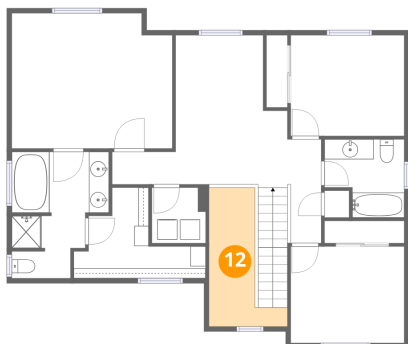
## 11 Floor 2 - Walkway



Dimensions: 30'1" x 8'6"  
Area: 257 sq. ft  
Counted as living area: No

Heated: No  
Finished: No  
Enclosed: No  
Contiguous: Yes  
Permitted: No  
Wet space: No  
Addition: No  
Conversion: No

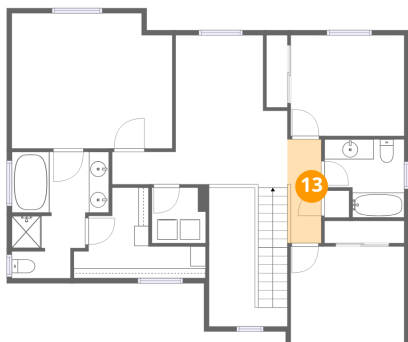
### 12 Floor 3 - Open To Below



Dimensions: 7'10" x 13'10"  
Area: 108 sq. ft  
Counted as living area: No

Heated: No  
Finished: No  
Enclosed: No  
Contiguous: Yes  
Permitted: No  
Wet space: No  
Addition: No  
Conversion: No

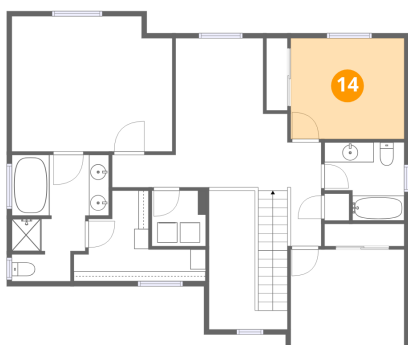
### 13 Floor 3 - Hall



Dimensions: 3'5" x 10'4"  
Area: 35 sq. ft  
Counted as living area: Yes

Heated: Yes  
Finished: Yes  
Enclosed: Yes  
Contiguous: Yes  
Permitted: Yes  
Wet space: No  
Addition: No  
Conversion: No

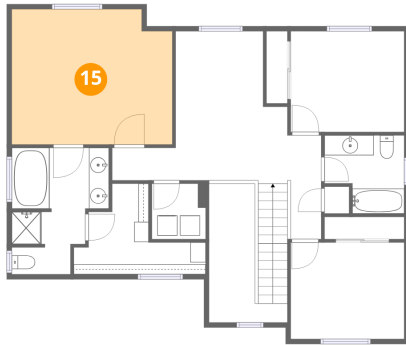
### 14 Floor 3 - Bedroom



Dimensions: 11'4" x 10'1"  
Area: 114 sq. ft  
Counted as living area: Yes

Heated: Yes  
Finished: Yes  
Enclosed: Yes  
Contiguous: Yes  
Permitted: Yes  
Wet space: No  
Addition: No  
Conversion: No

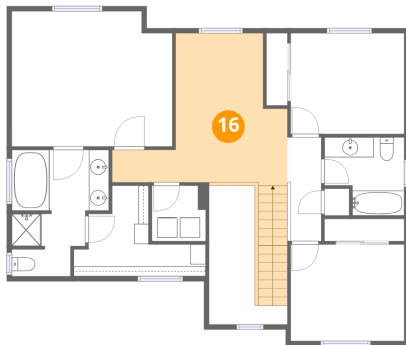
### 15 Floor 3 - Primary Bedroom



Dimensions: 16'0" x 13'6"  
Area: 216 sq. ft  
Counted as living area: Yes

Heated: Yes  
Finished: Yes  
Enclosed: Yes  
Contiguous: Yes  
Permitted: Yes  
Wet space: No  
Addition: No  
Conversion: No

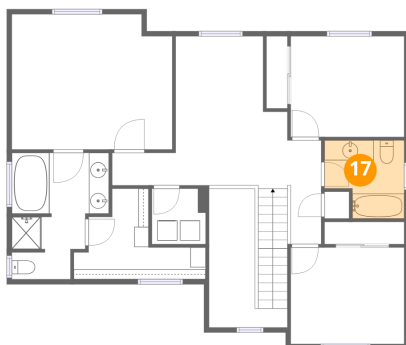
### 16 Floor 3 - Sitting Room



Dimensions: 17'5" x 14'11"  
Area: 260 sq. ft  
Counted as living area: Yes

Heated: Yes  
Finished: Yes  
Enclosed: Yes  
Contiguous: Yes  
Permitted: Yes  
Wet space: No  
Addition: No  
Conversion: No

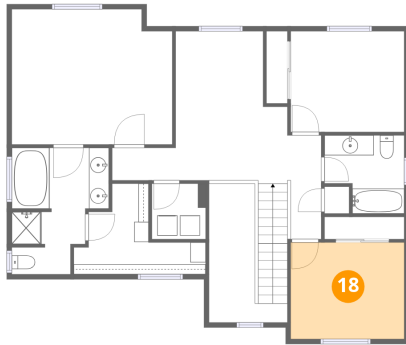
### 17 Floor 3 - Bath



Dimensions: 8'0" x 7'10"  
Area: 62 sq. ft  
Counted as living area: Yes

Heated: Yes  
Finished: Yes  
Enclosed: Yes  
Contiguous: Yes  
Permitted: Yes  
Wet space: Yes  
Addition: No  
Conversion: No

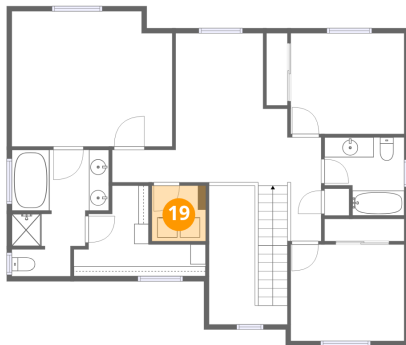
**18** Floor 3 - Bedroom



Dimensions: 11'4" x 9'8"  
Area: 109 sq. ft  
Counted as living area: Yes

Heated: Yes  
Finished: Yes  
Enclosed: Yes  
Contiguous: Yes  
Permitted: Yes  
Wet space: No  
Addition: No  
Conversion: No

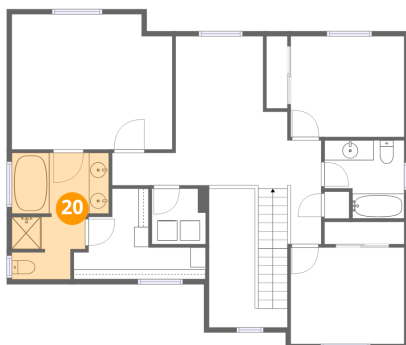
**19** Floor 3 - Laundry



Dimensions: 5'5" x 5'6"  
Area: 30 sq. ft  
Counted as living area: Yes

Heated: Yes  
Finished: Yes  
Enclosed: Yes  
Contiguous: Yes  
Permitted: Yes  
Wet space: No  
Addition: No  
Conversion: No

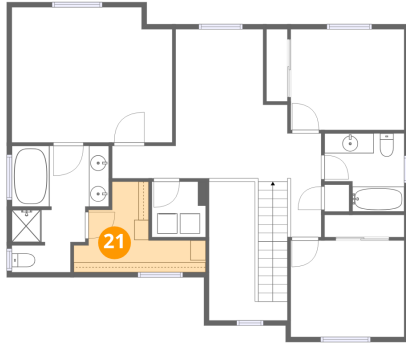
**20** Floor 3 - Primary Bath



Dimensions: 9'8" x 12'8"  
Area: 123 sq. ft  
Counted as living area: Yes

Heated: Yes  
Finished: Yes  
Enclosed: Yes  
Contiguous: Yes  
Permitted: Yes  
Wet space: Yes  
Addition: No  
Conversion: No

**21** Floor 3 - W.I.C.



Dimensions: 13'2" x 9'1"  
Area: 119 sq. ft  
Counted as living area: Yes

Heated: Yes  
Finished: Yes  
Enclosed: Yes  
Contiguous: Yes  
Permitted: Yes  
Wet space: No  
Addition: No  
Conversion: No