

Home data report

# 49 Cordella Ave, York, ON, CA




**Total Area: 1250 sq. ft**

Basement: 625 sq. ft, 1st Floor: 625 sq. ft

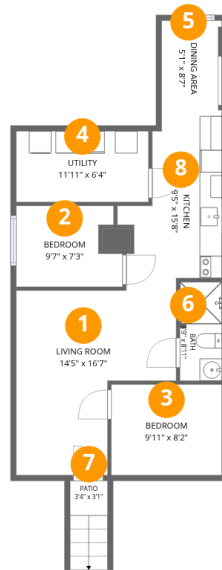
Excluded: Patio 27 sq. ft, Porch 55 sq. ft, Walls: 128 sq. ft

## Property summary

 **2** Floors

 **5** Bedrooms

 **2** Bathrooms



## Room dimensions

Floor 1 Below grade

Total: 625 sqft Excluded: 27 sqft

#		Dimensions	sqft	Counted as living area
1	Living Room	14'5" x 16'7"	186 sq. ft	Yes
2	Bedroom	9'7" x 7'3"	63 sq. ft	Yes
3	Bedroom	9'11" x 8'2"	81 sq. ft	Yes
4	Utility	11'11" x 6'4"	76 sq. ft	Yes
5	Dining Area	5'1" x 8'7"	47 sq. ft	Yes
6	Bath	3'9" x 8'11"	33 sq. ft	Yes
7	Patio	3'4" x 3'1"	27 sq. ft	No
8	Kitchen	9'5" x 15'8"	109 sq. ft	Yes



## Room dimensions

Floor 2

Total: 625 sqft Excluded: 55 sqft

#		Dimensions	sqft	Counted as living area
9	Porch	5'6" x 5'10"	55 sq. ft	No
10	Bath	5'5" x 9'7"	38 sq. ft	Yes
11	Living Room	9'9" x 10'3"	95 sq. ft	Yes
12	Foyer	4'4" x 7'10"	37 sq. ft	Yes
13	Bedroom	7'5" x 9'0"	67 sq. ft	Yes
14	Eat-in Kitchen	10'9" x 12'10"	135 sq. ft	Yes
15	Bedroom	8'4" x 9'9"	82 sq. ft	Yes
16	Entry	2'9" x 4'7"	13 sq. ft	Yes
17	Primary Bedroom	11'4" x 9'8"	107 sq. ft	Yes

## 1 Floor 1 - Living Room

---



Dimensions: 14'5" x 16'7"  
Area: 186 sq. ft  
Counted as living area: Yes

Heated: Yes  
Finished: Yes  
Enclosed: Yes  
Contiguous: Yes  
Permitted: Yes  
Wet space: No  
Addition: No  
Conversion: No

## 2 Floor 1 - Bedroom

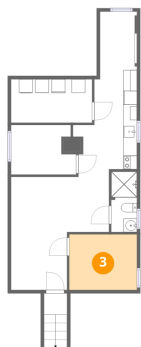
---



Dimensions: 9'7" x 7'3"  
Area: 63 sq. ft  
Counted as living area: Yes

Heated: Yes  
Finished: Yes  
Enclosed: Yes  
Contiguous: Yes  
Permitted: Yes  
Wet space: No  
Addition: No  
Conversion: No

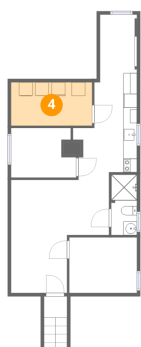
### 3 Floor 1 - Bedroom



Dimensions: 9'11" x 8'2"  
Area: 81 sq. ft  
Counted as living area: Yes

Heated: Yes  
Finished: Yes  
Enclosed: Yes  
Contiguous: Yes  
Permitted: Yes  
Wet space: No  
Addition: No  
Conversion: No

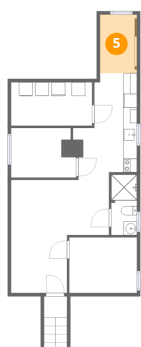
### 4 Floor 1 - Utility



Dimensions: 11'11" x 6'4"  
Area: 76 sq. ft  
Counted as living area: Yes

Heated: Yes  
Finished: Yes  
Enclosed: Yes  
Contiguous: Yes  
Permitted: Yes  
Wet space: No  
Addition: No  
Conversion: No

### 5 Floor 1 - Dining Area



Dimensions: 5'1" x 8'7"  
Area: 47 sq. ft  
Counted as living area: Yes

Heated: Yes  
Finished: Yes  
Enclosed: Yes  
Contiguous: Yes  
Permitted: Yes  
Wet space: No  
Addition: No  
Conversion: No

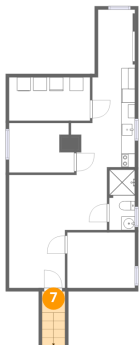
### 6 Floor 1 - Bath



Dimensions: 3'9" x 8'11"  
Area: 33 sq. ft  
Counted as living area: Yes

Heated: Yes  
Finished: Yes  
Enclosed: Yes  
Contiguous: Yes  
Permitted: Yes  
Wet space: Yes  
Addition: No  
Conversion: No

### 7 Floor 1 - Patio



Dimensions: 3'4" x 3'1"  
Area: 27 sq. ft  
Counted as living area: No

Heated: No  
Finished: No  
Enclosed: No  
Contiguous: Yes  
Permitted: Yes  
Wet space: No  
Addition: No  
Conversion: No

### 8 Floor 1 - Kitchen



Dimensions: 9'5" x 15'8"  
Area: 109 sq. ft  
Counted as living area: No

Heated: Yes  
Finished: Yes  
Enclosed: Yes  
Contiguous: Yes  
Permitted: Yes  
Wet space: No  
Addition: No  
Conversion: No

## 9 Floor 2 - Porch



Dimensions: 5'6" x 5'10"  
Area: 55 sq. ft  
Counted as living area: No

Heated: No  
Finished: No  
Enclosed: No  
Contiguous: Yes  
Permitted: Yes  
Wet space: No  
Addition: No  
Conversion: No

## 10 Floor 2 - Bath



Dimensions: 5'5" x 9'7"  
Area: 38 sq. ft  
Counted as living area: Yes

Heated: Yes  
Finished: Yes  
Enclosed: Yes  
Contiguous: Yes  
Permitted: Yes  
Wet space: Yes  
Addition: No  
Conversion: No

## 11 Floor 2 - Living Room



Dimensions: 9'9" x 10'3"  
Area: 95 sq. ft  
Counted as living area: Yes

Heated: Yes  
Finished: Yes  
Enclosed: Yes  
Contiguous: Yes  
Permitted: Yes  
Wet space: No  
Addition: No  
Conversion: No

**12** Floor 2 - Foyer

---



Dimensions: 4'4" x 7'10"  
Area: 37 sq. ft  
Counted as living area: Yes

Heated: Yes  
Finished: Yes  
Enclosed: Yes  
Contiguous: Yes  
Permitted: Yes  
Wet space: No  
Addition: No  
Conversion: No

**13** Floor 2 - Bedroom

---



Dimensions: 7'5" x 9'0"  
Area: 67 sq. ft  
Counted as living area: Yes

Heated: Yes  
Finished: Yes  
Enclosed: Yes  
Contiguous: Yes  
Permitted: Yes  
Wet space: No  
Addition: No  
Conversion: No

**14** Floor 2 - Eat-in Kitchen

---



Dimensions: 10'9" x 12'10"  
Area: 135 sq. ft  
Counted as living area: Yes

Heated: Yes  
Finished: Yes  
Enclosed: Yes  
Contiguous: Yes  
Permitted: Yes  
Wet space: No  
Addition: No  
Conversion: No

### 15 Floor 2 - Bedroom

---



Dimensions: 8'4" x 9'9"  
Area: 82 sq. ft  
Counted as living area: Yes

Heated: Yes  
Finished: Yes  
Enclosed: Yes  
Contiguous: Yes  
Permitted: Yes  
Wet space: No  
Addition: No  
Conversion: No

### 16 Floor 2 - Entry

---



Dimensions: 2'9" x 4'7"  
Area: 13 sq. ft  
Counted as living area: Yes

Heated: Yes  
Finished: Yes  
Enclosed: Yes  
Contiguous: Yes  
Permitted: Yes  
Wet space: No  
Addition: No  
Conversion: No

### 17 Floor 2 - Primary Bedroom

---



Dimensions: 11'4" x 9'8"  
Area: 107 sq. ft  
Counted as living area: Yes

Heated: Yes  
Finished: Yes  
Enclosed: Yes  
Contiguous: Yes  
Permitted: Yes  
Wet space: No  
Addition: No  
Conversion: No