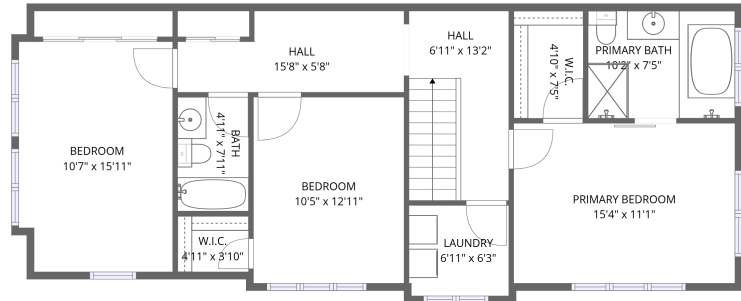
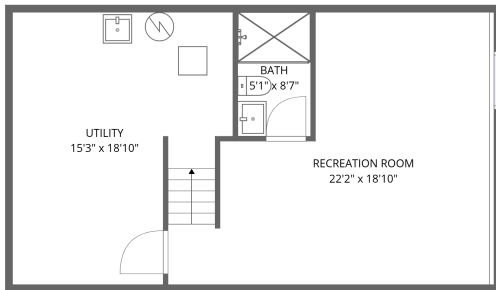


## Home data report

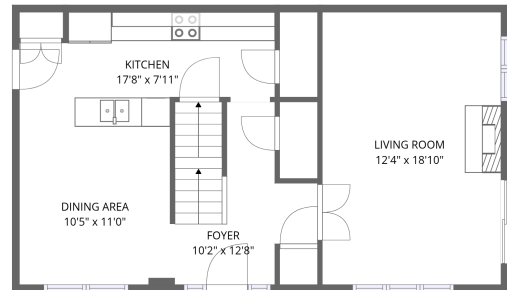
**236 Wabiskaw Private, Stonebridge, Nepean, Ontario, Canada,  
K2J 0E5**



1st floor



Basement 2



Basement 1

**Total Area: 1936 sq. ft**

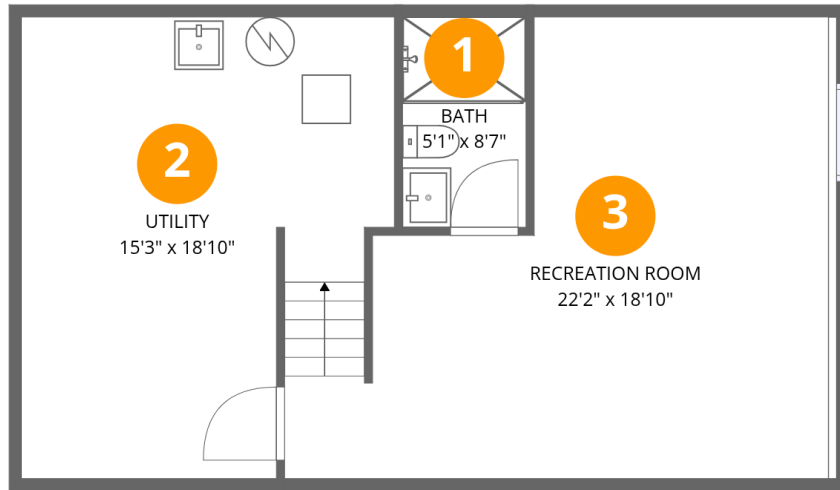
Basement 2: 382 sq. ft, Basement 1: 629 sq. ft, 1st Floor: 925 sq. ft

Excluded: Utility 247 sq. ft, Walls: 134 sq. ft

## Property summary



236 Wabiskaw Private, Stonebridge, Nepean, Ontario, Canada,  
K2J 0E5



## Room dimensions

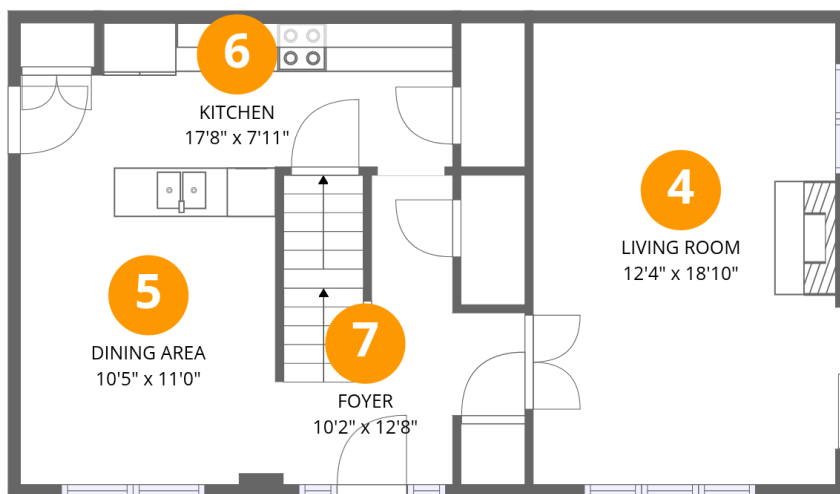
Floor 1 Below grade

Total:382sqft

Excluded: 247sqft

#		Dimensions	sqft	Counted as living area
1	Bath	5'1" x 8'7"	43 sq. ft	Yes
2	Utility	15'3" x 18'10"	286 sq. ft	No
3	Recreation Room	22'2" x 18'10"	418 sq. ft	Yes

# 236 Wabiskaw Private, Stonebridge, Nepean, Ontario, Canada, K2J 0E5



## Room dimensions

Floor 2 Below grade

Total:629sqft Excluded: 0sqft

#		Dimensions	sqft	Counted as living area
4	Living Room	12'4" x 18'10"	233 sq. ft	Yes
5	Dining Area	10'5" x 11'0"	114 sq. ft	Yes
6	Kitchen	17'8" x 7'11"	140 sq. ft	Yes
7	Foyer	10'2" x 12'8"	129 sq. ft	Yes

## Home data report

236 Wabiskaw Private, Stonebridge, Nepean, Ontario, Canada, K2J 0E5



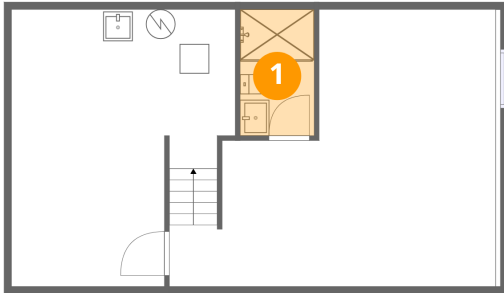
## Room dimensions

Floor 3

Total:925sqft Excluded: 0sqft

#		Dimensions	sqft	Counted as living area
8	Laundry	6'11" x 6'3"	43 sq. ft	Yes
9	Primary Bath	10'2" x 7'5"	76 sq. ft	Yes
10	Bath	4'11" x 7'11"	39 sq. ft	Yes
11	Bedroom	10'5" x 12'11"	134 sq. ft	Yes
12	Primary Bedroom	15'4" x 11'1"	170 sq. ft	Yes
13	Hall	15'8" x 5'8"	88 sq. ft	Yes
14	Bedroom	10'7" x 15'11"	169 sq. ft	Yes
15	Hall	6'11" x 13'2"	91 sq. ft	Yes
16	W.I.C.	4'11" x 3'10"	19 sq. ft	Yes
17	W.I.C.	4'10" x 7'5"	36 sq. ft	Yes

## 1 Floor 1 - Bath



Dimensions: 5'1" x 8'7"  
Area: 43 sq. ft  
Counted as living area: Yes

Heated: Yes  
Finished: Yes  
Enclosed: Yes  
Contiguous: Yes  
Permitted: Yes  
Wet space: Yes  
Addition: No  
Conversion: No

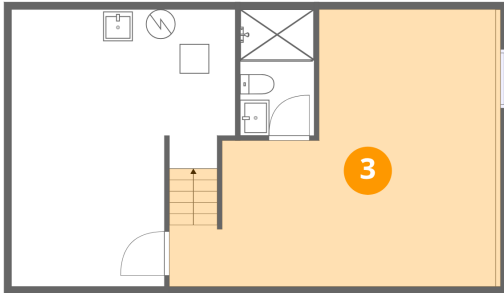
## 2 Floor 1 - Utility



Dimensions: 15'3" x 18'10"  
Area: 286 sq. ft  
Counted as living area: No

Heated: Yes  
Finished: No  
Enclosed: Yes  
Contiguous: Yes  
Permitted: Yes  
Wet space: No  
Addition: No  
Conversion: No

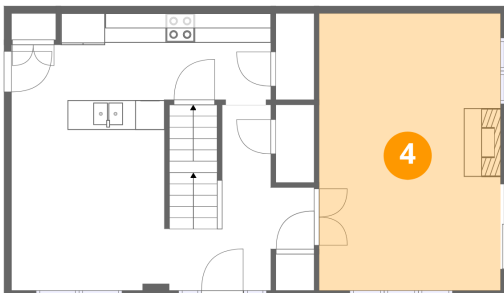
**3** Floor 1 - Recreation Room



Dimensions: 22'2" x 18'10"  
Area: 418 sq. ft  
Counted as living area: Yes

Heated: Yes  
Finished: Yes  
Enclosed: Yes  
Contiguous: Yes  
Permitted: Yes  
Wet space: No  
Addition: No  
Conversion: No

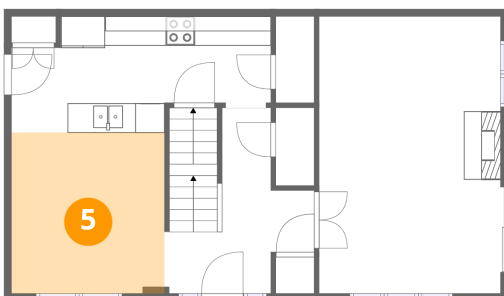
**4** Floor 2 - Living Room



Dimensions: 12'4" x 18'10"  
Area: 233 sq. ft  
Counted as living area: Yes

Heated: Yes  
Finished: Yes  
Enclosed: Yes  
Contiguous: Yes  
Permitted: Yes  
Wet space: No  
Addition: No  
Conversion: No

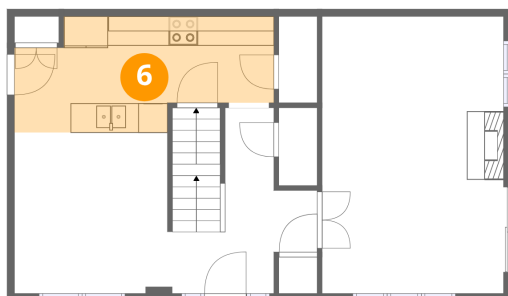
**5** Floor 2 - Dining Area



Dimensions: 10'5" x 11'0"  
Area: 114 sq. ft  
Counted as living area: Yes

Heated: Yes  
Finished: Yes  
Enclosed: Yes  
Contiguous: Yes  
Permitted: Yes  
Wet space: No  
Addition: No  
Conversion: No

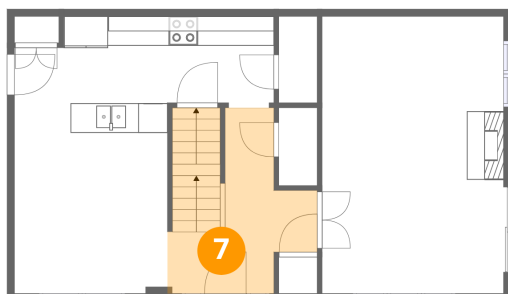
### 6 Floor 2 - Kitchen



Dimensions: 17'8" x 7'11"  
Area: 140 sq. ft  
Counted as living area: Yes

Heated: Yes  
Finished: Yes  
Enclosed: Yes  
Contiguous: Yes  
Permitted: Yes  
Wet space: No  
Addition: No  
Conversion: No

### 7 Floor 2 - Foyer



Dimensions: 10'2" x 12'8"  
Area: 129 sq. ft  
Counted as living area: Yes

Heated: Yes  
Finished: Yes  
Enclosed: Yes  
Contiguous: Yes  
Permitted: Yes  
Wet space: No  
Addition: No  
Conversion: No

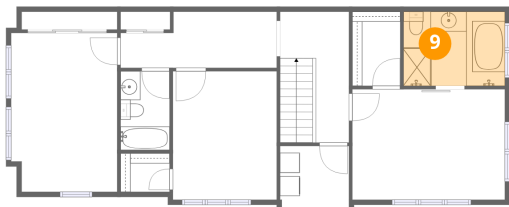
### 8 Floor 3 - Laundry



Dimensions: 6'11" x 6'3"  
Area: 43 sq. ft  
Counted as living area: Yes

Heated: Yes  
Finished: Yes  
Enclosed: Yes  
Contiguous: Yes  
Permitted: Yes  
Wet space: No  
Addition: No  
Conversion: No

### 9 Floor 3 - Primary Bath



Dimensions: 10'2" x 7'5"  
Area: 76 sq. ft  
Counted as living area: Yes

Heated: Yes  
Finished: Yes  
Enclosed: Yes  
Contiguous: Yes  
Permitted: Yes  
Wet space: Yes  
Addition: No  
Conversion: No

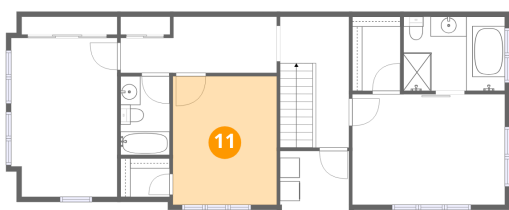
### 10 Floor 3 - Bath



Dimensions: 4'11" x 7'11"  
Area: 39 sq. ft  
Counted as living area: Yes

Heated: Yes  
Finished: Yes  
Enclosed: Yes  
Contiguous: Yes  
Permitted: Yes  
Wet space: Yes  
Addition: No  
Conversion: No

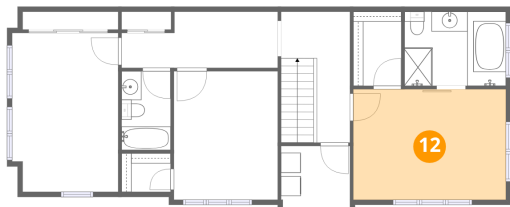
### 11 Floor 3 - Bedroom



Dimensions: 10'5" x 12'11"  
Area: 134 sq. ft  
Counted as living area: Yes

Heated: Yes  
Finished: Yes  
Enclosed: Yes  
Contiguous: Yes  
Permitted: Yes  
Wet space: No  
Addition: No  
Conversion: No

### 12 Floor 3 - Primary Bedroom



Dimensions: 15'4" x 11'1"  
Area: 170 sq. ft  
Counted as living area: Yes

Heated: Yes  
Finished: Yes  
Enclosed: Yes  
Contiguous: Yes  
Permitted: Yes  
Wet space: No  
Addition: No  
Conversion: No

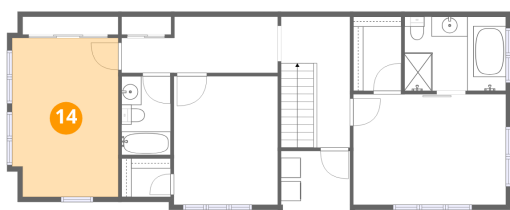
### 13 Floor 3 - Hall



Dimensions: 15'8" x 5'8"  
Area: 88 sq. ft  
Counted as living area: Yes

Heated: Yes  
Finished: Yes  
Enclosed: Yes  
Contiguous: Yes  
Permitted: Yes  
Wet space: No  
Addition: No  
Conversion: No

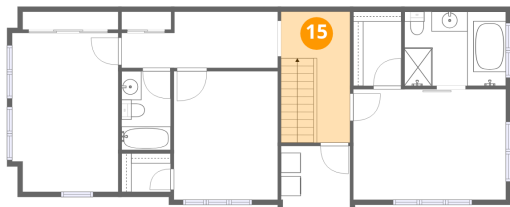
### 14 Floor 3 - Bedroom



Dimensions: 10'7" x 15'11"  
Area: 169 sq. ft  
Counted as living area: Yes

Heated: Yes  
Finished: Yes  
Enclosed: Yes  
Contiguous: Yes  
Permitted: Yes  
Wet space: No  
Addition: No  
Conversion: No

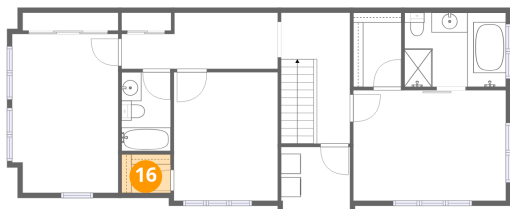
**15** Floor 3 - Hall



Dimensions: 6'11" x 13'2"  
Area: 91 sq. ft  
Counted as living area: Yes

Heated: Yes  
Finished: Yes  
Enclosed: Yes  
Contiguous: Yes  
Permitted: Yes  
Wet space: No  
Addition: No  
Conversion: No

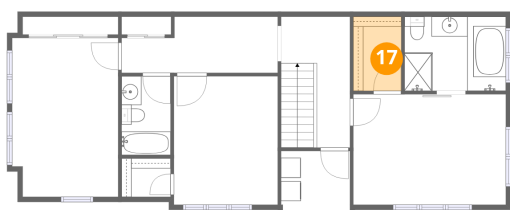
**16** Floor 3 - W.I.C.



Dimensions: 4'11" x 3'10"  
Area: 19 sq. ft  
Counted as living area: Yes

Heated: Yes  
Finished: Yes  
Enclosed: Yes  
Contiguous: Yes  
Permitted: Yes  
Wet space: No  
Addition: No  
Conversion: No

**17** Floor 3 - W.I.C.



Dimensions: 4'10" x 7'5"  
Area: 36 sq. ft  
Counted as living area: Yes

Heated: Yes  
Finished: Yes  
Enclosed: Yes  
Contiguous: Yes  
Permitted: Yes  
Wet space: No  
Addition: No  
Conversion: No