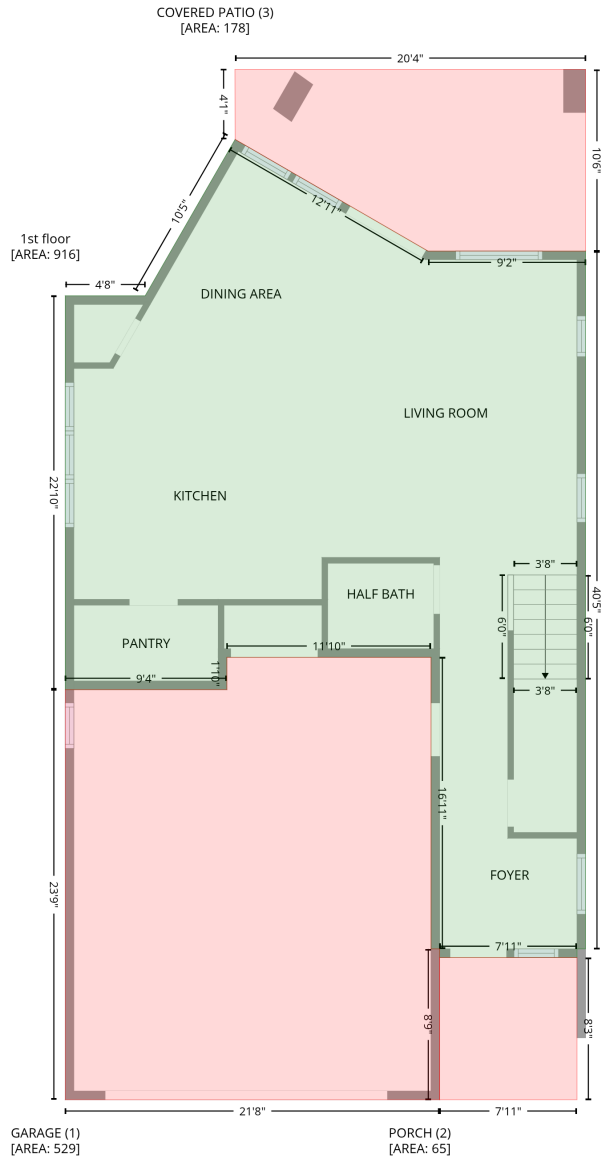


3116 Creighton Drive, Commonwealth Park, Charlotte, Mecklenburg County, North Carolina, United States, 28205

Gross Living Area: 2050 sq. ft

Level 1



Space	Area (sq. ft)	Calculation
1st floor (Living area)	916	Coordinate Polygon Area Algorithm using inches $-((165.3 + 299.2) * (24.5 - 102) + (299.2 + 408.8) * (102 - 102) + (408.8 + 408.8) * (102 - 587.1) + (408.8 + 402.8) * (587.1 - 587.1) + (402.8 + 402.8) * (587.1 - 593.1) + (402.8 + 307.4) * (593.1 - 593.1) + (307.4 + 307.4) * (593.1 - 587.1) + (307.4 + 301.4) * (587.1 - 587.1) + (301.4 + 301.4) * (587.1 - 384.4) + (301.4 + 159.5) * (384.4 - 384.4) + (159.5 + 159.5) * (384.4 - 406.9) + (159.5 + 47.2) * (406.9 - 406.9) + (47.2 + 47.2) * (406.9 - 133.1) + (47.2 + 102.8) * (133.1 - 133.1) + (102.8 + 165.3) * (133.1 - 24.5)) * 0.5 * 0.00694$

3116 Creighton Drive, Commonwealth Park, Charlotte, Mecklenburg County, North Carolina, United States, 28205

Gross Living Area: 2050 sq. ft

Level 1

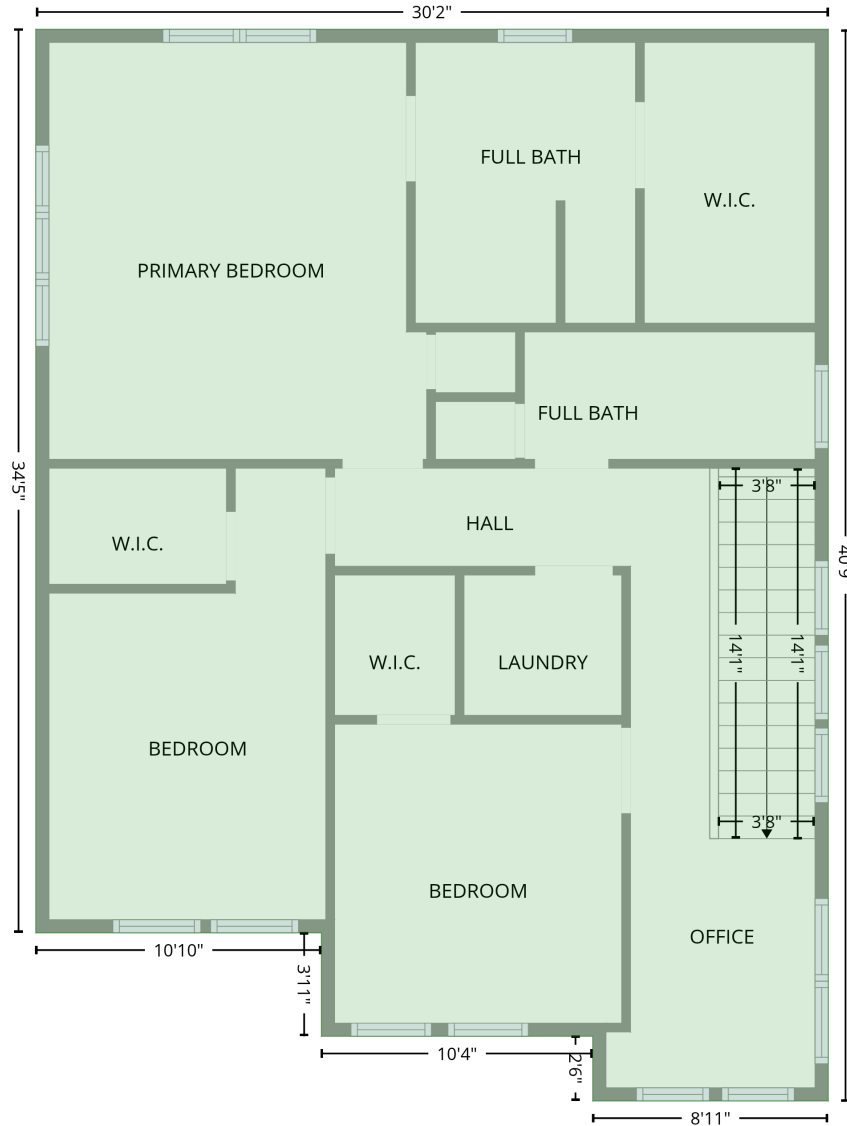
Space	Area (sq. ft)	Calculation <small>Coordinate Polygon Area Algorithm using inches</small>
GARAGE (Non-living area)	529	$-\left((301.4 + 301.4) * (384.4 - 587.1) + (301.4 + 307.4) * (587.1 - 587.1) + (307.4 + 307.4) * (587.1 - 691.9) + (307.4 + 47.2) * (691.9 - 691.9) + (47.2 + 47.2) * (691.9 - 406.9) + (47.2 + 159.5) * (406.9 - 406.9) + (159.5 + 159.5) * (406.9 - 384.4) + (159.5 + 301.4) * (384.4 - 384.4)\right) * 0.5 * 0.00694$
PORCH (Non-living area)	65	$-\left((402.8 + 402.8) * (593.1 - 691.9) + (402.8 + 307.4) * (691.9 - 691.9) + (307.4 + 307.4) * (691.9 - 593.1) + (307.4 + 402.8) * (593.1 - 593.1)\right) * 0.5 * 0.00694$
COVERED PATIO (Non-living area)	178	$-\left((408.8 + 408.8) * (-24.3 - 102) + (408.8 + 299.2) * (102 - 102) + (299.2 + 165.3) * (102 - 24.5) + (165.3 + 165.2) * (24.5 - -24.3) + (165.2 + 408.8) * (-24.3 - -24.3)\right) * 0.5 * 0.00694$

3116 Creighton Drive, Commonwealth Park, Charlotte, Mecklenburg County, North Carolina, United States, 28205

Gross Living Area: 2050 sq. ft

Level 2

2nd floor
[AREA: 1134]



Space	Area (sq. ft)	Calculation <small>Coordinate Polygon Area Algorithm using inches</small>
2nd floor (Living area)	1134	$ \begin{aligned} & -((408.8 + 408.8) * (133.1 - 622.6) + (408.8 + 301.4) * (622.6 - 622.6) + (301.4 + 301.4) * (622.6 - \\ & 593.1) + (301.4 + 177.6) * (593.1 - 593.1) + (177.6 + 177.6) * (593.1 - 545.8) + (177.6 + 47.2) * \\ & (545.8 - 545.8) + (47.2 + 47.2) * (545.8 - 133.1) + (47.2 + 408.8) * (133.1 - 133.1)) * 0.5 * \\ & 0.00694 \end{aligned} $